



**Project:** Weld County, CO  
**Site:** SEC 27 T6N-R65W  
**Well:** Hungenberg UH 9  
**Wellbore:** Original Wellbore  
**Design:** Plan 1

#### Reference Details

Geodetic System: US State Plane 1983  
 Datum: North American Datum 1983  
 Ellipsoid: GRS 1980  
 Latitude: 40° 27' 9.558 N  
 Longitude: 104° 38' 26.959 W  
 Grid Convergence: 0.54° West  
 Ground Elevation: 4694.0  
 KB Elevation: KB @ 4719.0ft



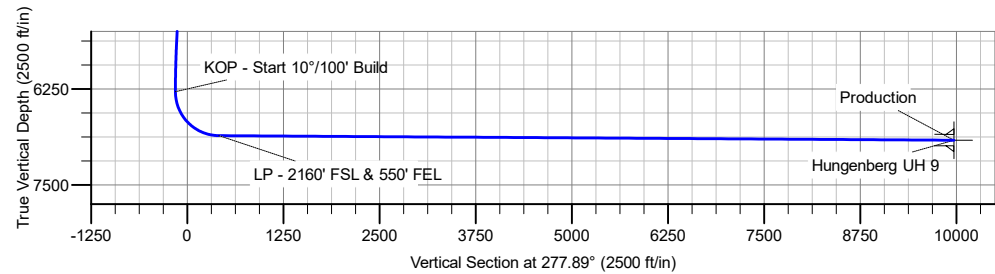
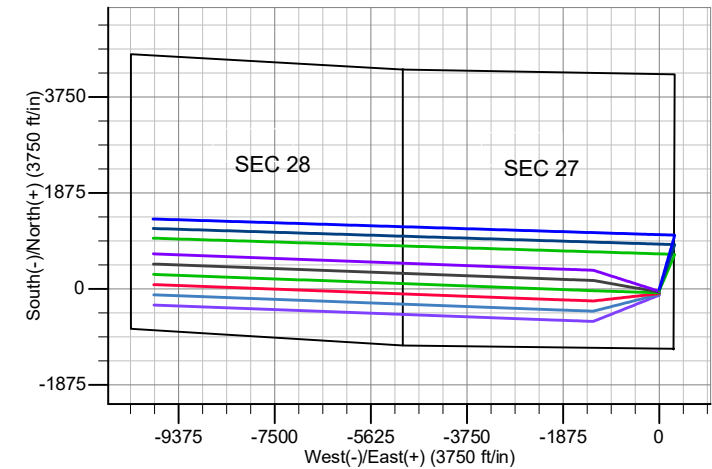
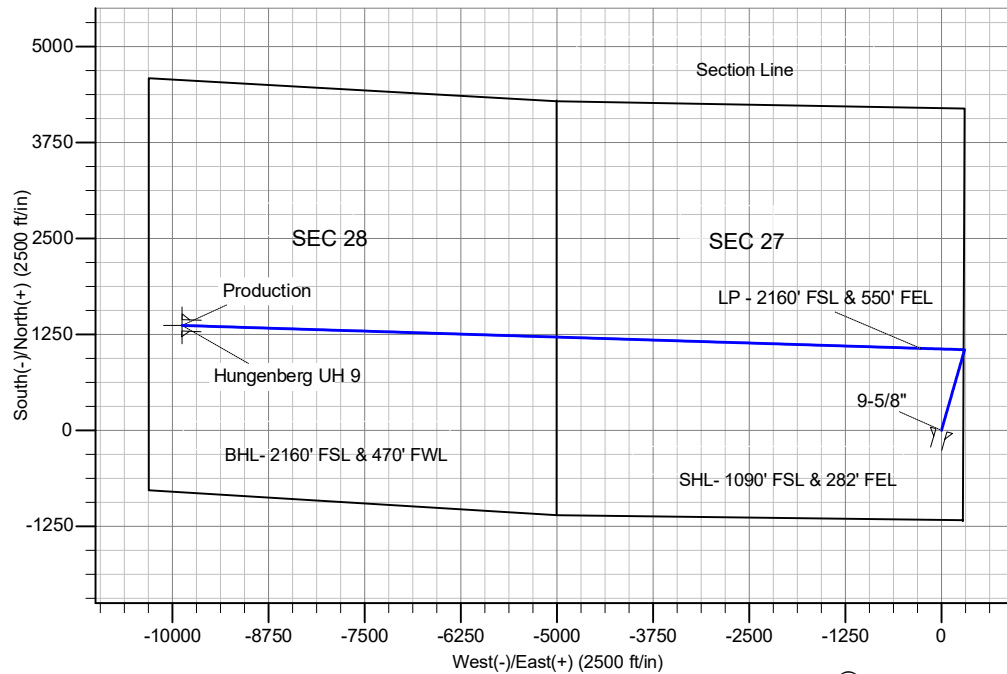
**RPM Consulting, Inc.**  
 1600 Broadway, Suite 1900  
 Denver, CO 80013  
 303-595-7625

#### SECTION DETAILS

MD	Inc	Azi	TVD	+N/-S	+E/-W	Dleg	TFace	VSect
0.0	0.00	0.00	0.0	0.0	0.0	0.00	0.00	0.0
2200.0	0.00	0.00	2200.0	0.0	0.0	0.00	0.00	0.0
2227.2	0.00	0.00	2227.2	0.0	0.0	0.00	0.00	0.0
2810.5	17.50	15.96	2801.5	85.0	24.3	3.00	15.96	-12.4
5862.1	17.50	15.96	5711.8	967.2	276.7	0.00	0.00	-141.3
6445.4	0.00	0.00	6286.1	1052.2	301.0	3.00	180.00	-153.8
7341.7	89.63	271.79	6859.0	1070.0	-268.0	10.00	271.79	412.3
7343.5	89.64	271.78	6859.1	1070.0	-269.8	1.00	-45.41	414.1
16952.7	89.64	271.78	6919.0	1368.0	-9874.2	0.00	0.00	9968.5

#### CASING DETAILS

TVD	MD	Name
2200.0	2200.0	Surface
6919.0	16952.7	Production



# **Incline Niobrara Partners**

**Weld County, CO  
SEC 27 T6N-R65W  
Hungenberg UH 9**

**Original Wellbore**

**Plan: Plan 1**

## **Standard Planning Report - Geographic**

**01 August, 2018**

# Planning Report - Geographic

<b>Database:</b>	EDM Server Database	<b>Local Co-ordinate Reference:</b>	Well Hungenberg UH 9
<b>Company:</b>	Incline Niobrara Partners	<b>TVD Reference:</b>	KB @ 4719.0ft
<b>Project:</b>	Weld County, CO	<b>MD Reference:</b>	KB @ 4719.0ft
<b>Site:</b>	SEC 27 T6N-R65W	<b>North Reference:</b>	True
<b>Well:</b>	Hungenberg UH 9	<b>Survey Calculation Method:</b>	Minimum Curvature
<b>Wellbore:</b>	Original Wellbore		
<b>Design:</b>	Plan 1		

<b>Project</b>	Weld County, CO		
<b>Map System:</b>	US State Plane 1983	<b>System Datum:</b>	Mean Sea Level
<b>Geo Datum:</b>	North American Datum 1983		
<b>Map Zone:</b>	Colorado Central Zone		

Site		SEC 27 T6N-R65W			
Site Position:		Northing:	595,907.86 m	Latitude:	40° 27' 8.370 N
From:	Lat/Long	Easting:	987,298.10 m	Longitude:	104° 38' 26.977 W
Position Uncertainty:	0.0 ft	Slot Radius:	13.200 in	Grid Convergence:	0.54 °

Well	Hungenberg UH 9					
Well Position	+N/-S	0.0 ft	Northing:	595,944.51 m	Latitude:	40° 27' 9.558 N
	+E/-W	0.0 ft	Easting:	987,298.18 m	Longitude:	104° 38' 26.959 W
Position Uncertainty		0.0 ft	Wellhead Elevation:		Ground Level:	4,694.0 ft

<b>Wellbore</b>	Original Wellbore				
<b>Magnetics</b>	<b>Model Name</b>	<b>Sample Date</b>	<b>Declination (°)</b>	<b>Dip Angle (°)</b>	<b>Field Strength (nT)</b>
	IGRF2015	7/19/2018	8.03	66.89	52,309.33830464

<b>Design</b>	Plan 1			
<b>Audit Notes:</b>				
<b>Version:</b>	<b>Phase:</b>	PROTOTYPE	<b>Tie On Depth:</b>	0.0
<b>Vertical Section:</b>	<b>Depth From (TVD) (ft)</b>	<b>+N/-S (ft)</b>	<b>+E/-W (ft)</b>	<b>Direction (°)</b>
	0.0	0.0	0.0	277.89

<b>Plan Survey Tool Program</b>	<b>Date</b>	7/19/2018		
<b>Depth From (ft)</b>	<b>Depth To (ft)</b>	<b>Survey (Wellbore)</b>	<b>Tool Name</b>	<b>Remarks</b>
1	0.0	16,952.7 Plan 1 (Original Wellbore)	MWD	
			OWSG MWD - Standard	

<b>Plan Sections</b>										
<b>Measured Depth (ft)</b>	<b>Inclination (°)</b>	<b>Azimuth (°)</b>	<b>Vertical Depth (ft)</b>	<b>+N/-S (ft)</b>	<b>+E/-W (ft)</b>	<b>Dogleg Rate (°/100ft)</b>	<b>Build Rate (°/100ft)</b>	<b>Turn Rate (°/100ft)</b>	<b>TFO (°)</b>	<b>Target</b>
0.0	0.00	0.00	0.0	0.0	0.0	0.00	0.00	0.00	0.00	
2,200.0	0.00	0.00	2,200.0	0.0	0.0	0.00	0.00	0.00	0.00	
2,227.2	0.00	0.00	2,227.2	0.0	0.0	0.00	0.00	0.00	0.00	
2,810.5	17.50	15.96	2,801.5	85.0	24.3	3.00	3.00	0.00	15.96	
5,862.1	17.50	15.96	5,711.8	967.2	276.7	0.00	0.00	0.00	0.00	
6,445.4	0.00	0.00	6,286.1	1,052.2	301.0	3.00	-3.00	0.00	180.00	
7,341.7	89.63	271.79	6,859.0	1,070.0	-268.0	10.00	10.00	0.00	271.79	
7,343.5	89.64	271.78	6,859.1	1,070.0	-269.8	1.00	0.70	-0.71	-45.41	
16,952.7	89.64	271.78	6,919.0	1,368.0	-9,874.2	0.00	0.00	0.00	0.00	Hungenberg UH 9

# Planning Report - Geographic

<b>Database:</b>	EDM Server Database	<b>Local Co-ordinate Reference:</b>	Well Hungenberg UH 9
<b>Company:</b>	Incline Niobrara Partners	<b>TVD Reference:</b>	KB @ 4719.0ft
<b>Project:</b>	Weld County, CO	<b>MD Reference:</b>	KB @ 4719.0ft
<b>Site:</b>	SEC 27 T6N-R65W	<b>North Reference:</b>	True
<b>Well:</b>	Hungenberg UH 9	<b>Survey Calculation Method:</b>	Minimum Curvature
<b>Wellbore:</b>	Original Wellbore		
<b>Design:</b>	Plan 1		

Planned Survey									
Measured Depth (ft)	Inclination (°)	Azimuth (°)	Vertical Depth (ft)	+N/-S (ft)	+E/-W (ft)	Map Northing (m)	Map Easting (m)	Latitude	Longitude
0.0	0.00	0.00	0.0	0.0	0.0	595,944.51	987,298.18	40° 27' 9.558 N	104° 38' 26.959 W
100.0	0.00	0.00	100.0	0.0	0.0	595,944.51	987,298.18	40° 27' 9.558 N	104° 38' 26.959 W
200.0	0.00	0.00	200.0	0.0	0.0	595,944.51	987,298.18	40° 27' 9.558 N	104° 38' 26.959 W
300.0	0.00	0.00	300.0	0.0	0.0	595,944.51	987,298.18	40° 27' 9.558 N	104° 38' 26.959 W
400.0	0.00	0.00	400.0	0.0	0.0	595,944.51	987,298.18	40° 27' 9.558 N	104° 38' 26.959 W
500.0	0.00	0.00	500.0	0.0	0.0	595,944.51	987,298.18	40° 27' 9.558 N	104° 38' 26.959 W
600.0	0.00	0.00	600.0	0.0	0.0	595,944.51	987,298.18	40° 27' 9.558 N	104° 38' 26.959 W
700.0	0.00	0.00	700.0	0.0	0.0	595,944.51	987,298.18	40° 27' 9.558 N	104° 38' 26.959 W
800.0	0.00	0.00	800.0	0.0	0.0	595,944.51	987,298.18	40° 27' 9.558 N	104° 38' 26.959 W
900.0	0.00	0.00	900.0	0.0	0.0	595,944.51	987,298.18	40° 27' 9.558 N	104° 38' 26.959 W
1,000.0	0.00	0.00	1,000.0	0.0	0.0	595,944.51	987,298.18	40° 27' 9.558 N	104° 38' 26.959 W
1,100.0	0.00	0.00	1,100.0	0.0	0.0	595,944.51	987,298.18	40° 27' 9.558 N	104° 38' 26.959 W
1,200.0	0.00	0.00	1,200.0	0.0	0.0	595,944.51	987,298.18	40° 27' 9.558 N	104° 38' 26.959 W
1,300.0	0.00	0.00	1,300.0	0.0	0.0	595,944.51	987,298.18	40° 27' 9.558 N	104° 38' 26.959 W
1,400.0	0.00	0.00	1,400.0	0.0	0.0	595,944.51	987,298.18	40° 27' 9.558 N	104° 38' 26.959 W
1,500.0	0.00	0.00	1,500.0	0.0	0.0	595,944.51	987,298.18	40° 27' 9.558 N	104° 38' 26.959 W
1,600.0	0.00	0.00	1,600.0	0.0	0.0	595,944.51	987,298.18	40° 27' 9.558 N	104° 38' 26.959 W
1,700.0	0.00	0.00	1,700.0	0.0	0.0	595,944.51	987,298.18	40° 27' 9.558 N	104° 38' 26.959 W
1,800.0	0.00	0.00	1,800.0	0.0	0.0	595,944.51	987,298.18	40° 27' 9.558 N	104° 38' 26.959 W
1,900.0	0.00	0.00	1,900.0	0.0	0.0	595,944.51	987,298.18	40° 27' 9.558 N	104° 38' 26.959 W
2,000.0	0.00	0.00	2,000.0	0.0	0.0	595,944.51	987,298.18	40° 27' 9.558 N	104° 38' 26.959 W
2,100.0	0.00	0.00	2,100.0	0.0	0.0	595,944.51	987,298.18	40° 27' 9.558 N	104° 38' 26.959 W
2,200.0	0.00	0.00	2,200.0	0.0	0.0	595,944.51	987,298.18	40° 27' 9.558 N	104° 38' 26.959 W
<b>9-5/8" - Surface</b>									
2,227.2	0.00	0.00	2,227.2	0.0	0.0	595,944.51	987,298.18	40° 27' 9.558 N	104° 38' 26.959 W
<b>Begin 3° Nudge</b>									
2,300.0	2.18	15.96	2,300.0	1.3	0.4	595,944.92	987,298.29	40° 27' 9.571 N	104° 38' 26.954 W
2,400.0	5.18	15.96	2,399.8	7.5	2.1	595,946.81	987,298.81	40° 27' 9.632 N	104° 38' 26.931 W
2,500.0	8.18	15.96	2,499.1	18.7	5.4	595,950.23	987,299.76	40° 27' 9.743 N	104° 38' 26.890 W
2,600.0	11.18	15.96	2,597.6	34.9	10.0	595,955.17	987,301.12	40° 27' 9.902 N	104° 38' 26.830 W
2,700.0	14.18	15.96	2,695.2	56.0	16.0	595,961.62	987,302.90	40° 27' 10.111 N	104° 38' 26.752 W
2,800.0	17.18	15.96	2,791.5	82.0	23.5	595,969.57	987,305.09	40° 27' 10.368 N	104° 38' 26.656 W
2,810.5	17.50	15.96	2,801.5	85.0	24.3	595,970.49	987,305.35	40° 27' 10.397 N	104° 38' 26.645 W
<b>Begin 17.5° Tangent</b>									
2,900.0	17.50	15.96	2,886.8	110.9	31.7	595,978.39	987,307.53	40° 27' 10.653 N	104° 38' 26.549 W
3,000.0	17.50	15.96	2,982.2	139.8	40.0	595,987.23	987,309.96	40° 27' 10.939 N	104° 38' 26.442 W
3,100.0	17.50	15.96	3,077.6	168.7	48.3	595,996.07	987,312.40	40° 27' 11.224 N	104° 38' 26.335 W
3,200.0	17.50	15.96	3,173.0	197.6	56.5	596,004.90	987,314.84	40° 27' 11.510 N	104° 38' 26.228 W
3,300.0	17.50	15.96	3,268.3	226.5	64.8	596,013.74	987,317.28	40° 27' 11.796 N	104° 38' 26.121 W
3,400.0	17.50	15.96	3,363.7	255.4	73.1	596,022.57	987,319.71	40° 27' 12.081 N	104° 38' 26.014 W
3,500.0	17.50	15.96	3,459.1	284.3	81.3	596,031.41	987,322.15	40° 27' 12.367 N	104° 38' 25.907 W
3,600.0	17.50	15.96	3,554.4	313.2	89.6	596,040.24	987,324.59	40° 27' 12.652 N	104° 38' 25.800 W
3,700.0	17.50	15.96	3,649.8	342.1	97.9	596,049.08	987,327.03	40° 27' 12.938 N	104° 38' 25.693 W
3,800.0	17.50	15.96	3,745.2	371.1	106.1	596,057.91	987,329.46	40° 27' 13.224 N	104° 38' 25.586 W
3,900.0	17.50	15.96	3,840.6	400.0	114.4	596,066.75	987,331.90	40° 27' 13.509 N	104° 38' 25.479 W
4,000.0	17.50	15.96	3,935.9	428.9	122.7	596,075.59	987,334.34	40° 27' 13.795 N	104° 38' 25.372 W
4,100.0	17.50	15.96	4,031.3	457.8	131.0	596,084.42	987,336.78	40° 27' 14.081 N	104° 38' 25.266 W
4,200.0	17.50	15.96	4,126.7	486.7	139.2	596,093.26	987,339.21	40° 27' 14.366 N	104° 38' 25.159 W
4,300.0	17.50	15.96	4,222.0	515.6	147.5	596,102.09	987,341.65	40° 27' 14.652 N	104° 38' 25.052 W
4,400.0	17.50	15.96	4,317.4	544.5	155.8	596,110.93	987,344.09	40° 27' 14.937 N	104° 38' 24.945 W
4,500.0	17.50	15.96	4,412.8	573.4	164.0	596,119.76	987,346.53	40° 27' 15.223 N	104° 38' 24.838 W
4,600.0	17.50	15.96	4,508.2	602.3	172.3	596,128.60	987,348.96	40° 27' 15.509 N	104° 38' 24.731 W
4,700.0	17.50	15.96	4,603.5	631.3	180.6	596,137.43	987,351.40	40° 27' 15.794 N	104° 38' 24.624 W
4,800.0	17.50	15.96	4,698.9	660.2	188.9	596,146.27	987,353.84	40° 27' 16.080 N	104° 38' 24.517 W

# Planning Report - Geographic

<b>Database:</b>	EDM Server Database	<b>Local Co-ordinate Reference:</b>	Well Hungenberg UH 9
<b>Company:</b>	Incline Niobrara Partners	<b>TVD Reference:</b>	KB @ 4719.0ft
<b>Project:</b>	Weld County, CO	<b>MD Reference:</b>	KB @ 4719.0ft
<b>Site:</b>	SEC 27 T6N-R65W	<b>North Reference:</b>	True
<b>Well:</b>	Hungenberg UH 9	<b>Survey Calculation Method:</b>	Minimum Curvature
<b>Wellbore:</b>	Original Wellbore		
<b>Design:</b>	Plan 1		

Planned Survey										
Measured Depth (ft)	Inclination (°)	Azimuth (°)	Vertical Depth (ft)	+N/-S (ft)	+E/-W (ft)	Map Northing (m)	Map Easting (m)	Latitude	Longitude	
4,900.0	17.50	15.96	4,794.3	689.1	197.1	596,155.10	987,356.27	40° 27' 16.366 N	104° 38' 24.410 W	
5,000.0	17.50	15.96	4,889.6	718.0	205.4	596,163.94	987,358.71	40° 27' 16.651 N	104° 38' 24.303 W	
5,100.0	17.50	15.96	4,985.0	746.9	213.7	596,172.78	987,361.15	40° 27' 16.937 N	104° 38' 24.196 W	
5,200.0	17.50	15.96	5,080.4	775.8	221.9	596,181.61	987,363.59	40° 27' 17.222 N	104° 38' 24.089 W	
5,300.0	17.50	15.96	5,175.8	804.7	230.2	596,190.45	987,366.02	40° 27' 17.508 N	104° 38' 23.982 W	
5,400.0	17.50	15.96	5,271.1	833.6	238.5	596,199.28	987,368.46	40° 27' 17.794 N	104° 38' 23.875 W	
5,500.0	17.50	15.96	5,366.5	862.5	246.7	596,208.12	987,370.90	40° 27' 18.079 N	104° 38' 23.768 W	
5,600.0	17.50	15.96	5,461.9	891.5	255.0	596,216.95	987,373.34	40° 27' 18.365 N	104° 38' 23.661 W	
5,700.0	17.50	15.96	5,557.2	920.4	263.3	596,225.79	987,375.77	40° 27' 18.651 N	104° 38' 23.554 W	
5,800.0	17.50	15.96	5,652.6	949.3	271.6	596,234.62	987,378.21	40° 27' 18.936 N	104° 38' 23.447 W	
5,862.1	17.50	15.96	5,711.8	967.2	276.7	596,240.11	987,379.72	40° 27' 19.113 N	104° 38' 23.381 W	
5,900.0	16.36	15.96	5,748.1	977.8	279.7	596,243.35	987,380.62	40° 27' 19.218 N	104° 38' 23.341 W	
6,000.0	13.36	15.96	5,844.7	1,002.5	286.8	596,250.89	987,382.70	40° 27' 19.462 N	104° 38' 23.250 W	
6,100.0	10.36	15.96	5,942.6	1,022.3	292.4	596,256.93	987,384.36	40° 27' 19.657 N	104° 38' 23.177 W	
6,200.0	7.36	15.96	6,041.4	1,037.1	296.7	596,261.45	987,385.61	40° 27' 19.803 N	104° 38' 23.122 W	
6,300.0	4.36	15.96	6,140.9	1,046.9	299.5	596,264.45	987,386.44	40° 27' 19.900 N	104° 38' 23.086 W	
6,400.0	1.36	15.96	6,240.7	1,051.7	300.9	596,265.92	987,386.84	40° 27' 19.948 N	104° 38' 23.068 W	
6,445.4	0.00	0.00	6,286.1	1,052.2	301.0	596,266.08	987,386.89	40° 27' 19.953 N	104° 38' 23.066 W	
KOP - Start 10°/100' Build										
6,500.0	5.46	271.79	6,340.6	1,052.3	298.4	596,266.10	987,386.10	40° 27' 19.954 N	104° 38' 23.100 W	
6,600.0	15.46	271.79	6,438.9	1,052.8	280.3	596,266.22	987,380.57	40° 27' 19.959 N	104° 38' 23.334 W	
6,700.0	25.46	271.79	6,532.4	1,053.9	245.4	596,266.45	987,369.93	40° 27' 19.970 N	104° 38' 23.786 W	
6,800.0	35.46	271.79	6,618.5	1,055.5	194.8	596,266.78	987,354.50	40° 27' 19.986 N	104° 38' 24.440 W	
6,900.0	45.46	271.79	6,694.5	1,057.5	130.0	596,267.21	987,334.75	40° 27' 20.006 N	104° 38' 25.278 W	
6,902.2	45.68	271.79	6,696.0	1,057.6	128.5	596,267.22	987,334.28	40° 27' 20.006 N	104° 38' 25.298 W	
Niobrara A										
7,000.0	55.46	271.79	6,758.1	1,060.0	53.0	596,267.73	987,311.28	40° 27' 20.030 N	104° 38' 26.274 W	
7,100.0	65.46	271.79	6,807.3	1,062.7	-33.9	596,268.30	987,284.80	40° 27' 20.056 N	104° 38' 27.397 W	
7,121.8	67.65	271.79	6,816.0	1,063.3	-53.9	596,268.44	987,278.70	40° 27' 20.063 N	104° 38' 27.656 W	
Niobrara B2										
7,200.0	75.46	271.79	6,840.7	1,065.6	-127.9	596,268.93	987,256.12	40° 27' 20.085 N	104° 38' 28.614 W	
7,300.0	85.46	271.79	6,857.3	1,068.7	-226.4	596,269.58	987,226.11	40° 27' 20.116 N	104° 38' 29.887 W	
7,341.7	89.63	271.79	6,859.0	1,070.0	-268.0	596,269.86	987,213.42	40° 27' 20.129 N	104° 38' 30.425 W	
LP - 2160' FSL & 550' FEL										
7,343.5	89.64	271.78	6,859.1	1,070.0	-269.8	596,269.87	987,212.87	40° 27' 20.129 N	104° 38' 30.448 W	
7,400.0	89.64	271.78	6,859.4	1,071.8	-326.3	596,270.24	987,195.65	40° 27' 20.147 N	104° 38' 31.179 W	
7,500.0	89.64	271.78	6,860.0	1,074.9	-426.2	596,270.90	987,165.17	40° 27' 20.177 N	104° 38' 32.472 W	
7,600.0	89.64	271.78	6,860.7	1,078.0	-526.2	596,271.56	987,134.70	40° 27' 20.208 N	104° 38' 33.764 W	
7,700.0	89.64	271.78	6,861.3	1,081.1	-626.1	596,272.21	987,104.23	40° 27' 20.238 N	104° 38' 35.057 W	
7,800.0	89.64	271.78	6,861.9	1,084.2	-726.1	596,272.87	987,073.76	40° 27' 20.269 N	104° 38' 36.350 W	
7,900.0	89.64	271.78	6,862.5	1,087.3	-826.0	596,273.53	987,043.29	40° 27' 20.300 N	104° 38' 37.642 W	
8,000.0	89.64	271.78	6,863.2	1,090.4	-926.0	596,274.18	987,012.81	40° 27' 20.330 N	104° 38' 38.935 W	
8,100.0	89.64	271.78	6,863.8	1,093.5	-1,025.9	596,274.84	986,982.34	40° 27' 20.361 N	104° 38' 40.228 W	
8,200.0	89.64	271.78	6,864.4	1,096.6	-1,125.9	596,275.50	986,951.87	40° 27' 20.391 N	104° 38' 41.520 W	
8,300.0	89.64	271.78	6,865.0	1,099.7	-1,225.8	596,276.16	986,921.40	40° 27' 20.422 N	104° 38' 42.813 W	
8,400.0	89.64	271.78	6,865.6	1,102.8	-1,325.8	596,276.81	986,890.92	40° 27' 20.453 N	104° 38' 44.106 W	
8,500.0	89.64	271.78	6,866.3	1,105.9	-1,425.7	596,277.47	986,860.45	40° 27' 20.483 N	104° 38' 45.398 W	
8,600.0	89.64	271.78	6,866.9	1,109.0	-1,525.7	596,278.13	986,829.98	40° 27' 20.514 N	104° 38' 46.691 W	
8,700.0	89.64	271.78	6,867.5	1,112.1	-1,625.6	596,278.78	986,799.51	40° 27' 20.544 N	104° 38' 47.984 W	
8,800.0	89.64	271.78	6,868.1	1,115.2	-1,725.6	596,279.44	986,769.03	40° 27' 20.575 N	104° 38' 49.277 W	
8,900.0	89.64	271.78	6,868.8	1,118.3	-1,825.5	596,280.10	986,738.56	40° 27' 20.605 N	104° 38' 50.569 W	
9,000.0	89.64	271.78	6,869.4	1,121.4	-1,925.5	596,280.76	986,708.09	40° 27' 20.636 N	104° 38' 51.862 W	
9,100.0	89.64	271.78	6,870.0	1,124.5	-2,025.4	596,281.41	986,677.62	40° 27' 20.667 N	104° 38' 53.155 W	
9,200.0	89.64	271.78	6,870.6	1,127.6	-2,125.4	596,282.07	986,647.14	40° 27' 20.697 N	104° 38' 54.447 W	

# Planning Report - Geographic

<b>Database:</b>	EDM Server Database	<b>Local Co-ordinate Reference:</b>	Well Hungenberg UH 9
<b>Company:</b>	Incline Niobrara Partners	<b>TVD Reference:</b>	KB @ 4719.0ft
<b>Project:</b>	Weld County, CO	<b>MD Reference:</b>	KB @ 4719.0ft
<b>Site:</b>	SEC 27 T6N-R65W	<b>North Reference:</b>	True
<b>Well:</b>	Hungenberg UH 9	<b>Survey Calculation Method:</b>	Minimum Curvature
<b>Wellbore:</b>	Original Wellbore		
<b>Design:</b>	Plan 1		

Planned Survey										
Measured			Vertical			Map		Map		
Depth	Inclination	Azimuth	Depth	+N/-S	+E/-W	Northing	Easting			
(ft)	(°)	(°)	(ft)	(ft)	(ft)	(m)	(m)		Latitude	Longitude
9,300.0	89.64	271.78	6,871.3	1,130.7	-2,225.3	596,282.73	986,616.67		40° 27' 20.728 N	104° 38' 55.740 W
9,400.0	89.64	271.78	6,871.9	1,133.8	-2,325.3	596,283.38	986,586.20		40° 27' 20.758 N	104° 38' 57.033 W
9,500.0	89.64	271.78	6,872.5	1,136.9	-2,425.2	596,284.04	986,555.73		40° 27' 20.789 N	104° 38' 58.325 W
9,600.0	89.64	271.78	6,873.1	1,140.0	-2,525.2	596,284.70	986,525.25		40° 27' 20.819 N	104° 38' 59.618 W
9,700.0	89.64	271.78	6,873.8	1,143.1	-2,625.1	596,285.36	986,494.78		40° 27' 20.850 N	104° 39' 0.911 W
9,800.0	89.64	271.78	6,874.4	1,146.2	-2,725.1	596,286.01	986,464.31		40° 27' 20.880 N	104° 39' 2.203 W
9,900.0	89.64	271.78	6,875.0	1,149.3	-2,825.0	596,286.67	986,433.84		40° 27' 20.911 N	104° 39' 3.496 W
10,000.0	89.64	271.78	6,875.6	1,152.4	-2,925.0	596,287.33	986,403.37		40° 27' 20.941 N	104° 39' 4.789 W
10,100.0	89.64	271.78	6,876.3	1,155.5	-3,024.9	596,287.98	986,372.89		40° 27' 20.972 N	104° 39' 6.081 W
10,200.0	89.64	271.78	6,876.9	1,158.6	-3,124.9	596,288.64	986,342.42		40° 27' 21.003 N	104° 39' 7.374 W
10,300.0	89.64	271.78	6,877.5	1,161.7	-3,224.8	596,289.30	986,311.95		40° 27' 21.033 N	104° 39' 8.667 W
10,400.0	89.64	271.78	6,878.1	1,164.8	-3,324.8	596,289.96	986,281.48		40° 27' 21.064 N	104° 39' 9.959 W
10,500.0	89.64	271.78	6,878.7	1,167.9	-3,424.7	596,290.61	986,251.00		40° 27' 21.094 N	104° 39' 11.252 W
10,600.0	89.64	271.78	6,879.4	1,171.0	-3,524.7	596,291.27	986,220.53		40° 27' 21.125 N	104° 39' 12.545 W
10,700.0	89.64	271.78	6,880.0	1,174.1	-3,624.6	596,291.93	986,190.06		40° 27' 21.155 N	104° 39' 13.838 W
10,800.0	89.64	271.78	6,880.6	1,177.2	-3,724.6	596,292.58	986,159.59		40° 27' 21.186 N	104° 39' 15.130 W
10,900.0	89.64	271.78	6,881.2	1,180.3	-3,824.5	596,293.24	986,129.11		40° 27' 21.216 N	104° 39' 16.423 W
11,000.0	89.64	271.78	6,881.9	1,183.4	-3,924.5	596,293.90	986,098.64		40° 27' 21.247 N	104° 39' 17.716 W
11,100.0	89.64	271.78	6,882.5	1,186.5	-4,024.4	596,294.56	986,068.17		40° 27' 21.277 N	104° 39' 19.008 W
11,200.0	89.64	271.78	6,883.1	1,189.6	-4,124.4	596,295.21	986,037.70		40° 27' 21.308 N	104° 39' 20.301 W
11,300.0	89.64	271.78	6,883.7	1,192.7	-4,224.3	596,295.87	986,007.22		40° 27' 21.338 N	104° 39' 21.594 W
11,400.0	89.64	271.78	6,884.4	1,195.8	-4,324.3	596,296.53	985,976.75		40° 27' 21.368 N	104° 39' 22.886 W
11,500.0	89.64	271.78	6,885.0	1,198.9	-4,424.2	596,297.18	985,946.28		40° 27' 21.399 N	104° 39' 24.179 W
11,502.3	89.64	271.78	6,885.0	1,199.0	-4,426.5	596,297.20	985,945.59		40° 27' 21.400 N	104° 39' 24.208 W
Niobrara C										
11,600.0	89.64	271.78	6,885.6	1,202.0	-4,524.2	596,297.84	985,915.81		40° 27' 21.429 N	104° 39' 25.472 W
11,700.0	89.64	271.78	6,886.2	1,205.1	-4,624.1	596,298.50	985,885.33		40° 27' 21.460 N	104° 39' 26.764 W
11,800.0	89.64	271.78	6,886.9	1,208.2	-4,724.1	596,299.16	985,854.86		40° 27' 21.490 N	104° 39' 28.057 W
11,900.0	89.64	271.78	6,887.5	1,211.4	-4,824.0	596,299.81	985,824.39		40° 27' 21.521 N	104° 39' 29.350 W
12,000.0	89.64	271.78	6,888.1	1,214.5	-4,924.0	596,300.47	985,793.92		40° 27' 21.551 N	104° 39' 30.643 W
12,100.0	89.64	271.78	6,888.7	1,217.6	-5,023.9	596,301.13	985,763.45		40° 27' 21.582 N	104° 39' 31.935 W
12,200.0	89.64	271.78	6,889.4	1,220.7	-5,123.9	596,301.78	985,732.97		40° 27' 21.612 N	104° 39' 33.228 W
12,300.0	89.64	271.78	6,890.0	1,223.8	-5,223.8	596,302.44	985,702.50		40° 27' 21.643 N	104° 39' 34.521 W
12,400.0	89.64	271.78	6,890.6	1,226.9	-5,323.8	596,303.10	985,672.03		40° 27' 21.673 N	104° 39' 35.813 W
12,500.0	89.64	271.78	6,891.2	1,230.0	-5,423.7	596,303.75	985,641.56		40° 27' 21.703 N	104° 39' 37.106 W
12,600.0	89.64	271.78	6,891.8	1,233.1	-5,523.7	596,304.41	985,611.08		40° 27' 21.734 N	104° 39' 38.399 W
12,700.0	89.64	271.78	6,892.5	1,236.2	-5,623.6	596,305.07	985,580.61		40° 27' 21.764 N	104° 39' 39.691 W
12,800.0	89.64	271.78	6,893.1	1,239.3	-5,723.6	596,305.73	985,550.14		40° 27' 21.795 N	104° 39' 40.984 W
12,900.0	89.64	271.78	6,893.7	1,242.4	-5,823.5	596,306.38	985,519.67		40° 27' 21.825 N	104° 39' 42.277 W
13,000.0	89.64	271.78	6,894.3	1,245.5	-5,923.5	596,307.04	985,489.19		40° 27' 21.855 N	104° 39' 43.569 W
13,100.0	89.64	271.78	6,895.0	1,248.6	-6,023.4	596,307.70	985,458.72		40° 27' 21.886 N	104° 39' 44.862 W
13,200.0	89.64	271.78	6,895.6	1,251.7	-6,123.4	596,308.35	985,428.25		40° 27' 21.916 N	104° 39' 46.155 W
13,300.0	89.64	271.78	6,896.2	1,254.8	-6,223.3	596,309.01	985,397.78		40° 27' 21.947 N	104° 39' 47.448 W
13,400.0	89.64	271.78	6,896.8	1,257.9	-6,323.3	596,309.67	985,367.30		40° 27' 21.977 N	104° 39' 48.740 W
13,500.0	89.64	271.78	6,897.5	1,261.0	-6,423.2	596,310.33	985,336.83		40° 27' 22.007 N	104° 39' 50.033 W
13,600.0	89.64	271.78	6,898.1	1,264.1	-6,523.2	596,310.98	985,306.36		40° 27' 22.038 N	104° 39' 51.326 W
13,700.0	89.64	271.78	6,898.7	1,267.2	-6,623.1	596,311.64	985,275.89		40° 27' 22.068 N	104° 39' 52.618 W
13,800.0	89.64	271.78	6,899.3	1,270.3	-6,723.1	596,312.30	985,245.41		40° 27' 22.099 N	104° 39' 53.911 W
13,900.0	89.64	271.78	6,900.0	1,273.4	-6,823.0	596,312.95	985,214.94		40° 27' 22.129 N	104° 39' 55.204 W
14,000.0	89.64	271.78	6,900.6	1,276.5	-6,923.0	596,313.61	985,184.47		40° 27' 22.159 N	104° 39' 56.496 W
14,100.0	89.64	271.78	6,901.2	1,279.6	-7,022.9	596,314.27	985,154.00		40° 27' 22.190 N	104° 39' 57.789 W
14,200.0	89.64	271.78	6,901.8	1,282.7	-7,122.9	596,314.93	985,123.52		40° 27' 22.220 N	104° 39' 59.082 W
14,300.0	89.64	271.78	6,902.5	1,285.8	-7,222.8	596,315.58	985,093.05		40° 27' 22.250 N	104° 40' 0.375 W
14,400.0	89.64	271.78	6,903.1	1,288.9	-7,322.8	596,316.24	985,062.58		40° 27' 22.281 N	104° 40' 1.667 W

# Planning Report - Geographic

<b>Database:</b>	EDM Server Database	<b>Local Co-ordinate Reference:</b>	Well Hungenberg UH 9
<b>Company:</b>	Incline Niobrara Partners	<b>TVD Reference:</b>	KB @ 4719.0ft
<b>Project:</b>	Weld County, CO	<b>MD Reference:</b>	KB @ 4719.0ft
<b>Site:</b>	SEC 27 T6N-R65W	<b>North Reference:</b>	True
<b>Well:</b>	Hungenberg UH 9	<b>Survey Calculation Method:</b>	Minimum Curvature
<b>Wellbore:</b>	Original Wellbore		
<b>Design:</b>	Plan 1		

Planned Survey										
Measured Depth (ft)	Inclination (°)	Azimuth (°)	Vertical Depth (ft)	+N/-S (ft)	+E/-W (ft)	Map Northing (m)	Map Easting (m)	Latitude	Longitude	
14,500.0	89.64	271.78	6,903.7	1,292.0	-7,422.7	596,316.90	985,032.11	40° 27' 22.311 N	104° 40' 2.960 W	
14,600.0	89.64	271.78	6,904.3	1,295.1	-7,522.7	596,317.55	985,001.64	40° 27' 22.342 N	104° 40' 4.253 W	
14,700.0	89.64	271.78	6,904.9	1,298.2	-7,622.6	596,318.21	984,971.16	40° 27' 22.372 N	104° 40' 5.545 W	
14,800.0	89.64	271.78	6,905.6	1,301.3	-7,722.6	596,318.87	984,940.69	40° 27' 22.402 N	104° 40' 6.838 W	
14,900.0	89.64	271.78	6,906.2	1,304.4	-7,822.5	596,319.53	984,910.22	40° 27' 22.433 N	104° 40' 8.131 W	
15,000.0	89.64	271.78	6,906.8	1,307.5	-7,922.5	596,320.18	984,879.75	40° 27' 22.463 N	104° 40' 9.423 W	
15,100.0	89.64	271.78	6,907.4	1,310.6	-8,022.4	596,320.84	984,849.27	40° 27' 22.493 N	104° 40' 10.716 W	
15,200.0	89.64	271.78	6,908.1	1,313.7	-8,122.4	596,321.50	984,818.80	40° 27' 22.524 N	104° 40' 12.009 W	
15,300.0	89.64	271.78	6,908.7	1,316.8	-8,222.3	596,322.15	984,788.33	40° 27' 22.554 N	104° 40' 13.302 W	
15,400.0	89.64	271.78	6,909.3	1,319.9	-8,322.3	596,322.81	984,757.86	40° 27' 22.584 N	104° 40' 14.594 W	
15,500.0	89.64	271.78	6,909.9	1,323.0	-8,422.2	596,323.47	984,727.38	40° 27' 22.614 N	104° 40' 15.887 W	
15,600.0	89.64	271.78	6,910.6	1,326.1	-8,522.2	596,324.13	984,696.91	40° 27' 22.645 N	104° 40' 17.180 W	
15,700.0	89.64	271.78	6,911.2	1,329.2	-8,622.1	596,324.78	984,666.44	40° 27' 22.675 N	104° 40' 18.472 W	
15,800.0	89.64	271.78	6,911.8	1,332.3	-8,722.1	596,325.44	984,635.97	40° 27' 22.705 N	104° 40' 19.765 W	
15,900.0	89.64	271.78	6,912.4	1,335.4	-8,822.0	596,326.10	984,605.49	40° 27' 22.736 N	104° 40' 21.058 W	
16,000.0	89.64	271.78	6,913.1	1,338.5	-8,922.0	596,326.75	984,575.02	40° 27' 22.766 N	104° 40' 22.350 W	
16,100.0	89.64	271.78	6,913.7	1,341.6	-9,021.9	596,327.41	984,544.55	40° 27' 22.796 N	104° 40' 23.643 W	
16,200.0	89.64	271.78	6,914.3	1,344.7	-9,121.9	596,328.07	984,514.08	40° 27' 22.827 N	104° 40' 24.936 W	
16,300.0	89.64	271.78	6,914.9	1,347.8	-9,221.8	596,328.73	984,483.60	40° 27' 22.857 N	104° 40' 26.229 W	
16,400.0	89.64	271.78	6,915.6	1,350.9	-9,321.8	596,329.38	984,453.13	40° 27' 22.887 N	104° 40' 27.521 W	
16,500.0	89.64	271.78	6,916.2	1,354.0	-9,421.7	596,330.04	984,422.66	40° 27' 22.917 N	104° 40' 28.814 W	
16,600.0	89.64	271.78	6,916.8	1,357.1	-9,521.7	596,330.70	984,392.19	40° 27' 22.948 N	104° 40' 30.107 W	
16,700.0	89.64	271.78	6,917.4	1,360.2	-9,621.6	596,331.35	984,361.72	40° 27' 22.978 N	104° 40' 31.399 W	
16,800.0	89.64	271.78	6,918.0	1,363.3	-9,721.6	596,332.01	984,331.24	40° 27' 23.008 N	104° 40' 32.692 W	
16,900.0	89.64	271.78	6,918.7	1,366.4	-9,821.5	596,332.67	984,300.77	40° 27' 23.038 N	104° 40' 33.985 W	
16,952.7	89.64	271.78	6,919.0	1,368.0	-9,874.2	596,333.01	984,284.72	40° 27' 23.054 N	104° 40' 34.666 W	
Total Depth										

Design Targets										
Target Name	Dip Angle (°)	Dip Dir. (°)	TVD (ft)	+N/-S (ft)	+E/-W (ft)	Northing (m)	Easting (m)	Latitude	Longitude	
- hit/miss target										
- Shape										
Hungenberg UH 9	0.00	0.00	6,919.0	1,368.0	-9,874.2	596,333.01	984,284.72	40° 27' 23.054 N	104° 40' 34.666 W	
- plan hits target center										
- Point										

Casing Points					
Measured Depth (ft)	Vertical Depth (ft)	Name	Casing Diameter (in)	Hole Diameter (in)	
2,200.0	2,200.0	Surface	9.625	9.625	
16,952.7	6,919.0	Production	5.500	5.500	

## Planning Report - Geographic

<b>Database:</b>	EDM Server Database	<b>Local Co-ordinate Reference:</b>	Well Hungenberg UH 9
<b>Company:</b>	Incline Niobrara Partners	<b>TVD Reference:</b>	KB @ 4719.0ft
<b>Project:</b>	Weld County, CO	<b>MD Reference:</b>	KB @ 4719.0ft
<b>Site:</b>	SEC 27 T6N-R65W	<b>North Reference:</b>	True
<b>Well:</b>	Hungenberg UH 9	<b>Survey Calculation Method:</b>	Minimum Curvature
<b>Wellbore:</b>	Original Wellbore		
<b>Design:</b>	Plan 1		

Formations					
Measured Depth (ft)	Vertical Depth (ft)	Name	Lithology	Dip (°)	Dip Direction (°)
6,902.2	6,696.0	Niobrara A			
7,121.8	6,816.0	Niobrara B2			
11,502.3	6,885.0	Niobrara C			

Plan Annotations				
Measured Depth (ft)	Vertical Depth (ft)	Local Coordinates		Comment
		+N/-S (ft)	+E/-W (ft)	
2,200.0	2,200.0	0.0	0.0	9-5/8"
2,227.2	2,227.2	0.0	0.0	Begin 3° Nudge
2,810.5	2,801.5	85.0	24.3	Begin 17.5° Tangent
6,445.4	6,286.1	1,052.2	301.0	KOP - Start 10°/100' Build
7,341.7	6,859.0	1,070.0	-268.0	LP - 2160' FSL & 550' FEL
16,952.7	6,919.0	1,368.0	-9,874.2	Total Depth