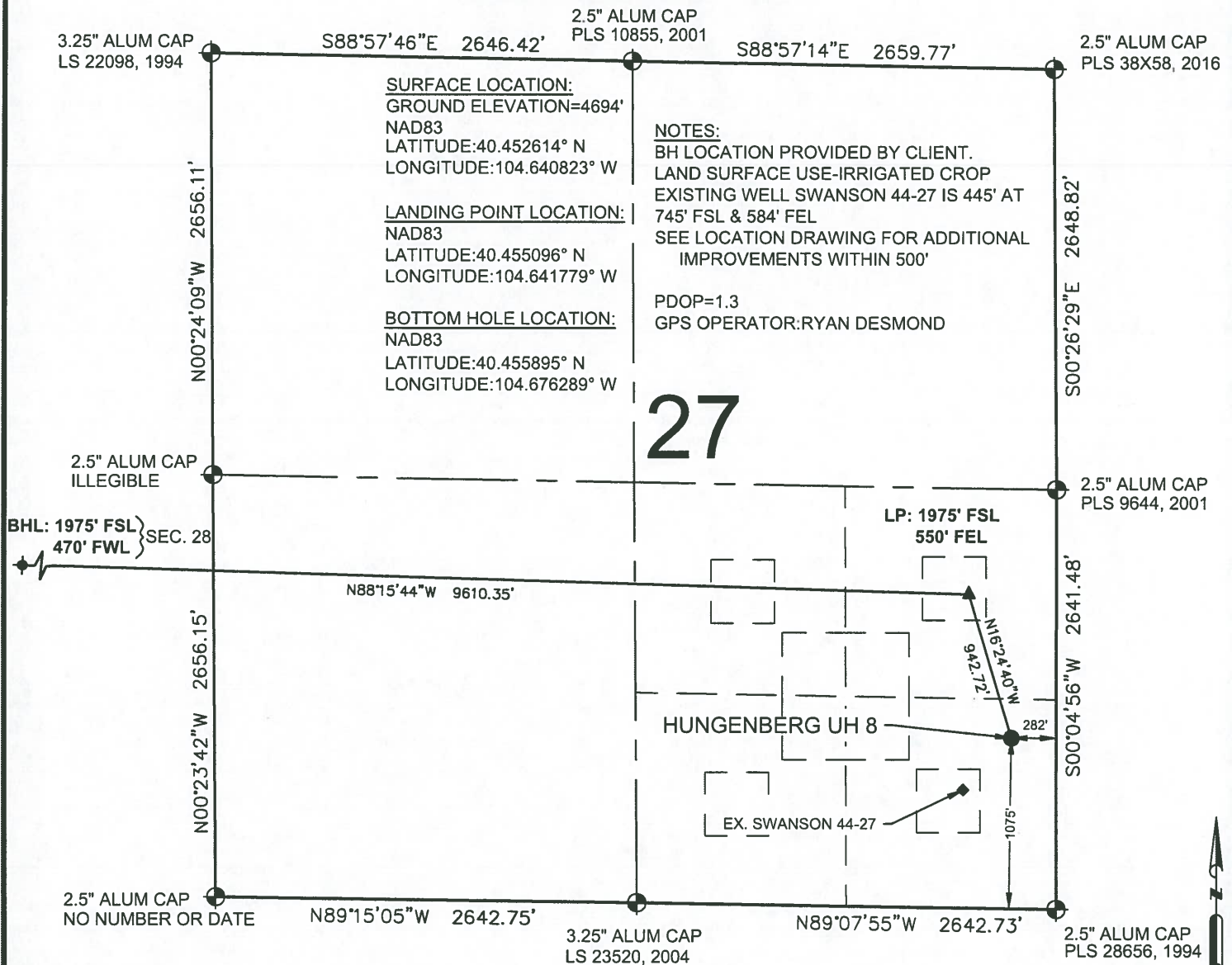


# HUNGENBERG UH 8 WELL LOCATION EXHIBIT



## LEGEND

- = EXISTING MONUMENT
- = CALCULATED POSITION
- = PROPOSED WELL
- ◆ = EXISTING WELL
- ◆ = BOTTOM HOLE
- ▲ = LANDING POINT
- LP = LANDING POINT
- BHL = BOTTOM HOLE LOCATION

## NOTES:

- THIS FIELD SURVEY CONFORMS TO THE MINIMUM STANDARDS SET BY THE C.O.G.C.C., RULE NO. 215
- ALL DISTANCES AND BEARINGS SHOWN HEREON ARE GROUND VALUES AS GPS MEASURED IN THE FIELD, WITH TIES TO WELLS MEASURED PERPENDICULAR TO LINES SHOWN HEREON. THIS LOW DISTORTION PROJECTION (LDP) IS BASED ON THE NORTH AMERICAN DATUM OF 1983, U.S. SURVEY FOOT WITH A LATITUDE ORIGIN OF 40.478994°N, A CENTRAL MERIDIAN LONGITUDE OF 104.659055°W, AND A SCALE FACTOR ON THE CENTRAL MERIDIAN OF 1.000224 (EXACT). THE LDP BASIS OF BEARINGS IS GEODETIC NORTH.
- FIELD VERIFICATION OF MONUMENTS COMPLETED WITHIN 1 YEAR OF SIGNATURE DATE, UNLESS OTHERWISE NOTED.

## WELL HUNGENBERG UH 8 TO BE LOCATED 1075' FSL & 282' FEL

I, ROBERT J. GUFFEY, A LICENSED PROFESSIONAL LAND SURVEYOR IN THE STATE OF COLORADO, DO HEREBY STATE TO **INCLINE NIOBRARA PARTNERS, LP** THAT THE WELL LOCATION EXHIBIT SHOWN HEREON WAS PREPARED BY ME OR UNDER MY DIRECT SUPERVISION AND THE DRAWING SHOWN HEREON ACCURATELY DEPICTS THE PROPOSED LOCATION OF THE WELL. THIS EXHIBIT MEETS THE REQUIREMENTS OF A GIS LAND POSITION AS DEFINED BY SECTION 38-51-102 (7.5) C.R.S. AND AS SUCH PER SECTION 38-51-109.3 C.R.S. CANNOT BE RELIED UPON TO DETERMINE OWNERSHIP.

ROBERT J. GUFFEY, PLS 20680  
COLORADO LICENSED PROFESSIONAL LAND SURVEYOR  
FOR AND ON BEHALF OF P.F.S., LLC  
d.b.a. ASCENT GEOMATICS SOLUTIONS



SHEET 1 OF 2



FIELD DATE:  
07-02-18  
DRAWING DATE:  
07-03-18  
BY:  
MJH  
CHECKED:  
MMP

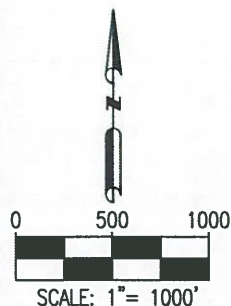
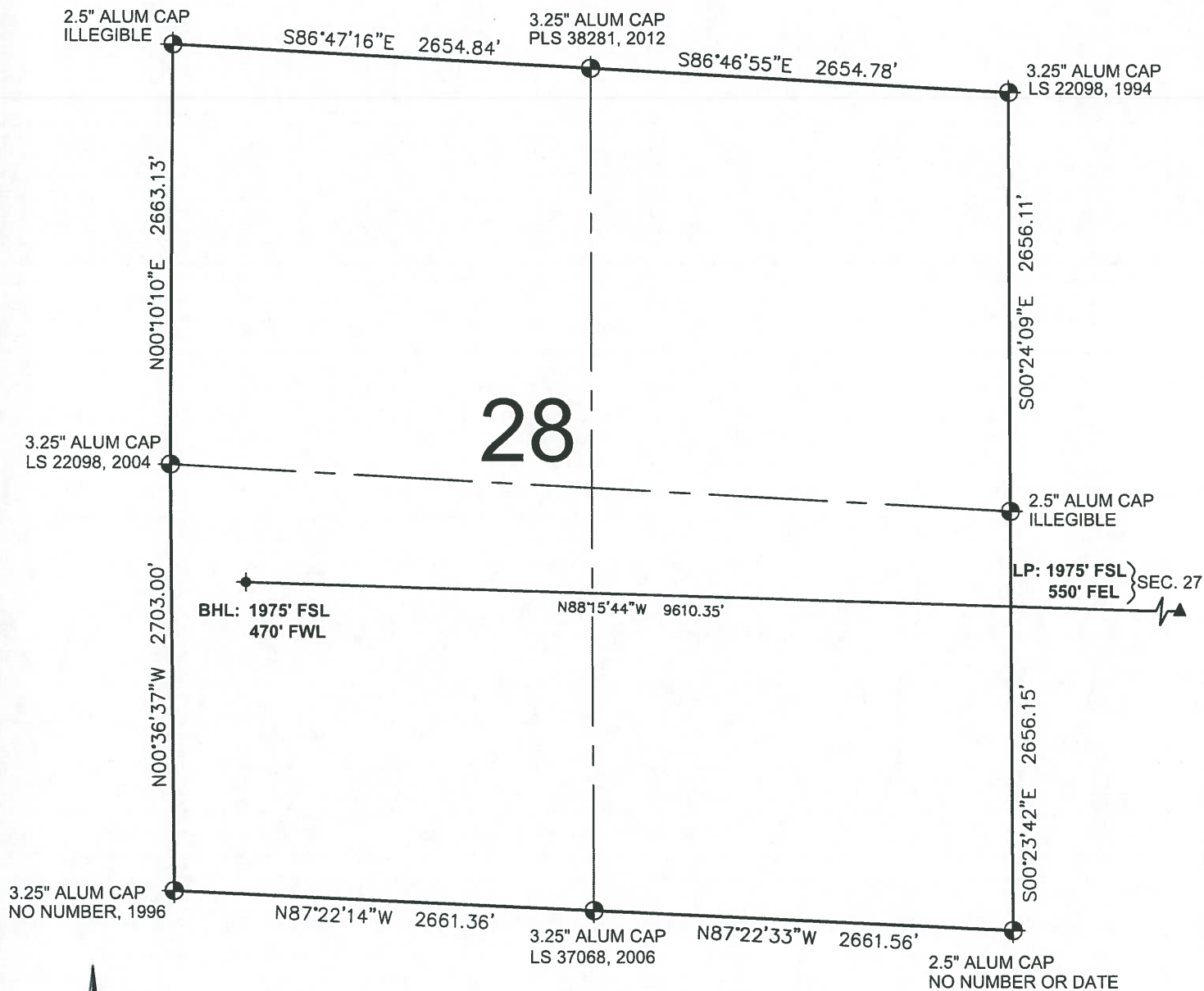
WELL NAME:  
HUNGENBERG UH 8  
SURFACE LOCATION:  
SE 1/4 SE 1/4 SEC. 27, T6N, R65W, 6TH P.M.  
WELD COUNTY, COLORADO

PREPARED FOR:





# HUNGENBERG UH 8 WELL LOCATION EXHIBIT



## LEGEND

- ⊕ = EXISTING MONUMENT
- = CALCULATED POSITION
- = PROPOSED WELL
- ◆ = EXISTING WELL
- ⬮ = BOTTOM HOLE
- ▲ = LANDING POINT
- LP = LANDING POINT
- BHL = BOTTOM HOLE LOCATION

ROBERT J. GUFFEY, PLS 20680  
COLORADO LICENSED PROFESSIONAL LAND SURVEYOR  
FOR AND ON BEHALF OF P.F.S., LLC  
d.b.a. ASCENT GEOMATICS SOLUTIONS



SHEET 2 OF 2

FIELD DATE:  
07-02-18

DRAWING DATE:  
07-03-18

BY:  
MJH

CHECKED:  
MMP

WELL NAME:  
HUNGENBERG UH 8

SURFACE LOCATION:

SE 1/4 SE 1/4 SEC. 27, T6N, R65W, 6TH P.M.  
WELD COUNTY, COLORADO

PREPARED FOR: