



Project: Weld County, CO
Site: SEC 27 T6N-R65W
Well: Hungenberg UH 8
Wellbore: Original Wellbore
Design: Plan 1

Reference Details

Geodetic System: US State Plane 1983
Datum: North American Datum 1983
Ellipsoid: GRS 1980
Latitude: 40° 27' 9.410 N
Longitude: 104° 38' 26.963 W
Grid Convergence: 0.54° West
Ground Elevation: 4694.0
KB Elevation: KB @ 4719.0ft



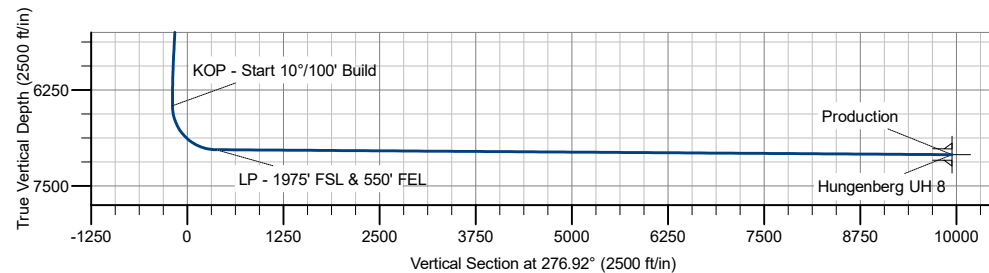
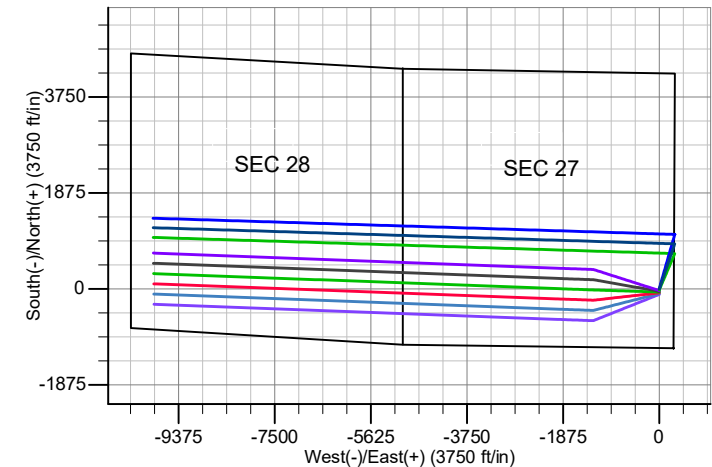
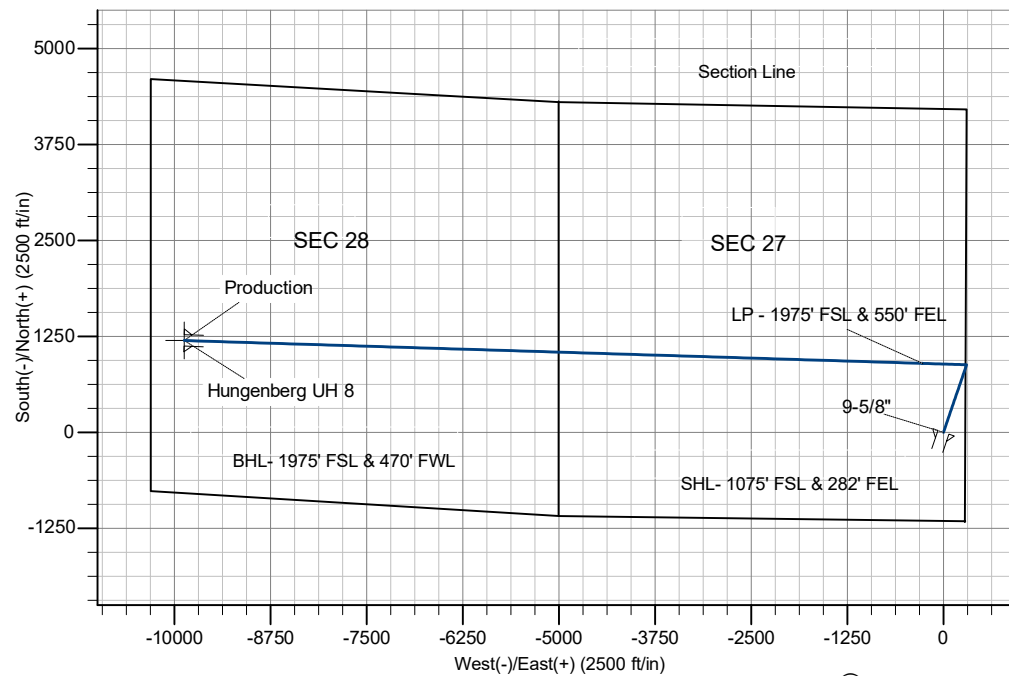
RPM Consulting, Inc.
1600 Broadway, Suite 1900
Denver, CO 80013
303-595-7625

SECTION DETAILS

MD	Inc	Azi	TVD	+N/-S	+E/-W	Dleg	TFace	VSect
0.0	0.00	0.00	0.0	0.0	0.0	0.00	0.00	0.0
2200.0	0.00	0.00	2200.0	0.0	0.0	0.00	0.00	0.0
2222.8	0.00	0.00	2222.8	0.0	0.0	0.00	0.00	0.0
2972.8	15.00	18.83	2964.2	92.4	31.5	2.00	18.83	-20.2
5820.2	15.00	18.83	5714.6	789.9	269.4	0.00	0.00	-172.3
6570.2	0.00	0.00	6456.1	882.3	300.9	2.00	180.00	-192.5
7466.4	89.62	271.78	7029.0	900.0	-268.0	10.00	271.78	374.4
7467.3	89.61	271.77	7029.1	900.0	-268.9	1.00	-142.73	375.3
17075.3	89.61	271.77	7094.0	1197.5	-9872.0	0.00	0.00	9944.4

CASING DETAILS

TVD	MD	Name
2200.0	2200.0	Surface
7094.0	17075.3	Production



Incline Niobrara Partners

**Weld County, CO
SEC 27 T6N-R65W
Hungenberg UH 8**

Original Wellbore

Plan: Plan 1

Standard Planning Report - Geographic

01 August, 2018

Planning Report - Geographic

Database:	EDM Server Database	Local Co-ordinate Reference:	Well Hungenberg UH 8
Company:	Incline Niobrara Partners	TVD Reference:	KB @ 4719.0ft
Project:	Weld County, CO	MD Reference:	KB @ 4719.0ft
Site:	SEC 27 T6N-R65W	North Reference:	True
Well:	Hungenberg UH 8	Survey Calculation Method:	Minimum Curvature
Wellbore:	Original Wellbore		
Design:	Plan 1		

Project	Weld County, CO		
Map System:	US State Plane 1983	System Datum:	Mean Sea Level
Geo Datum:	North American Datum 1983		
Map Zone:	Colorado Central Zone		

Site		SEC 27 T6N-R65W			
Site Position:		Northing:	595,907.86 m	Latitude:	40° 27' 8.370 N
From:	Lat/Long	Easting:	987,298.10 m	Longitude:	104° 38' 26.977 W
Position Uncertainty:	0.0 ft	Slot Radius:	13.200 in	Grid Convergence:	0.54 °

Well	Hungenberg UH 8					
Well Position	+N/-S	0.0 ft	Northing:	595,939.96 m	Latitude:	40° 27' 9.410 N
	+E/-W	0.0 ft	Easting:	987,298.14 m	Longitude:	104° 38' 26.963 W
Position Uncertainty		0.0 ft	Wellhead Elevation:		Ground Level:	4,694.0 ft

Wellbore	Original Wellbore				
Magnetics	Model Name	Sample Date	Declination (°)	Dip Angle (°)	Field Strength (nT)
	IGRF2015	7/19/2018	8.03	66.89	52,309.31701776

Design	Plan 1			
Audit Notes:				
Version:	Phase:	PROTOTYPE	Tie On Depth:	0.0
Vertical Section:	Depth From (TVD) (ft)	+N/-S (ft)	+E/-W (ft)	Direction (°)
	0.0	0.0	0.0	276.92

Plan Survey Tool Program	Date	7/19/2018		
Depth From (ft)	Depth To (ft)	Survey (Wellbore)	Tool Name	Remarks
1	0.0	17,075.3 Plan 1 (Original Wellbore)	MWD	
			OWSG MWD - Standard	

Plan Sections										
Measured Depth (ft)	Inclination (°)	Azimuth (°)	Vertical Depth (ft)	+N/-S (ft)	+E/-W (ft)	Dogleg Rate (°/100ft)	Build Rate (°/100ft)	Turn Rate (°/100ft)	TFO (°)	Target
0.0	0.00	0.00	0.0	0.0	0.0	0.00	0.00	0.00	0.00	
2,200.0	0.00	0.00	2,200.0	0.0	0.0	0.00	0.00	0.00	0.00	
2,222.8	0.00	0.00	2,222.8	0.0	0.0	0.00	0.00	0.00	0.00	
2,972.8	15.00	18.83	2,964.2	92.4	31.5	2.00	2.00	0.00	18.83	
5,820.2	15.00	18.83	5,714.6	789.9	269.4	0.00	0.00	0.00	0.00	
6,570.2	0.00	0.00	6,456.1	882.3	300.9	2.00	-2.00	0.00	180.00	
7,466.4	89.62	271.78	7,029.0	900.0	-268.0	10.00	10.00	0.00	271.78	
7,467.3	89.61	271.77	7,029.1	900.0	-268.9	1.00	-0.80	-0.61	-142.73	
17,075.3	89.61	271.77	7,094.0	1,197.5	-9,872.0	0.00	0.00	0.00	0.00	Hungenberg UH 8

Planning Report - Geographic

Database:	EDM Server Database	Local Co-ordinate Reference:	Well Hungenberg UH 8
Company:	Incline Niobrara Partners	TVD Reference:	KB @ 4719.0ft
Project:	Weld County, CO	MD Reference:	KB @ 4719.0ft
Site:	SEC 27 T6N-R65W	North Reference:	True
Well:	Hungenberg UH 8	Survey Calculation Method:	Minimum Curvature
Wellbore:	Original Wellbore		
Design:	Plan 1		

Planned Survey									
Measured Depth (ft)	Inclination (°)	Azimuth (°)	Vertical Depth (ft)	+N/-S (ft)	+E/-W (ft)	Map Northing (m)	Map Easting (m)	Latitude	Longitude
0.0	0.00	0.00	0.0	0.0	0.0	595,939.96	987,298.14	40° 27' 9.410 N	104° 38' 26.963 W
100.0	0.00	0.00	100.0	0.0	0.0	595,939.96	987,298.14	40° 27' 9.410 N	104° 38' 26.963 W
200.0	0.00	0.00	200.0	0.0	0.0	595,939.96	987,298.14	40° 27' 9.410 N	104° 38' 26.963 W
300.0	0.00	0.00	300.0	0.0	0.0	595,939.96	987,298.14	40° 27' 9.410 N	104° 38' 26.963 W
400.0	0.00	0.00	400.0	0.0	0.0	595,939.96	987,298.14	40° 27' 9.410 N	104° 38' 26.963 W
500.0	0.00	0.00	500.0	0.0	0.0	595,939.96	987,298.14	40° 27' 9.410 N	104° 38' 26.963 W
600.0	0.00	0.00	600.0	0.0	0.0	595,939.96	987,298.14	40° 27' 9.410 N	104° 38' 26.963 W
700.0	0.00	0.00	700.0	0.0	0.0	595,939.96	987,298.14	40° 27' 9.410 N	104° 38' 26.963 W
800.0	0.00	0.00	800.0	0.0	0.0	595,939.96	987,298.14	40° 27' 9.410 N	104° 38' 26.963 W
900.0	0.00	0.00	900.0	0.0	0.0	595,939.96	987,298.14	40° 27' 9.410 N	104° 38' 26.963 W
1,000.0	0.00	0.00	1,000.0	0.0	0.0	595,939.96	987,298.14	40° 27' 9.410 N	104° 38' 26.963 W
1,100.0	0.00	0.00	1,100.0	0.0	0.0	595,939.96	987,298.14	40° 27' 9.410 N	104° 38' 26.963 W
1,200.0	0.00	0.00	1,200.0	0.0	0.0	595,939.96	987,298.14	40° 27' 9.410 N	104° 38' 26.963 W
1,300.0	0.00	0.00	1,300.0	0.0	0.0	595,939.96	987,298.14	40° 27' 9.410 N	104° 38' 26.963 W
1,400.0	0.00	0.00	1,400.0	0.0	0.0	595,939.96	987,298.14	40° 27' 9.410 N	104° 38' 26.963 W
1,500.0	0.00	0.00	1,500.0	0.0	0.0	595,939.96	987,298.14	40° 27' 9.410 N	104° 38' 26.963 W
1,600.0	0.00	0.00	1,600.0	0.0	0.0	595,939.96	987,298.14	40° 27' 9.410 N	104° 38' 26.963 W
1,700.0	0.00	0.00	1,700.0	0.0	0.0	595,939.96	987,298.14	40° 27' 9.410 N	104° 38' 26.963 W
1,800.0	0.00	0.00	1,800.0	0.0	0.0	595,939.96	987,298.14	40° 27' 9.410 N	104° 38' 26.963 W
1,900.0	0.00	0.00	1,900.0	0.0	0.0	595,939.96	987,298.14	40° 27' 9.410 N	104° 38' 26.963 W
2,000.0	0.00	0.00	2,000.0	0.0	0.0	595,939.96	987,298.14	40° 27' 9.410 N	104° 38' 26.963 W
2,100.0	0.00	0.00	2,100.0	0.0	0.0	595,939.96	987,298.14	40° 27' 9.410 N	104° 38' 26.963 W
2,200.0	0.00	0.00	2,200.0	0.0	0.0	595,939.96	987,298.14	40° 27' 9.410 N	104° 38' 26.963 W
9-5/8" - Surface									
2,222.8	0.00	0.00	2,222.8	0.0	0.0	595,939.96	987,298.14	40° 27' 9.410 N	104° 38' 26.963 W
Begin 2° Nudge									
2,300.0	1.54	18.83	2,300.0	1.0	0.3	595,940.26	987,298.24	40° 27' 9.420 N	104° 38' 26.958 W
2,400.0	3.54	18.83	2,399.9	5.2	1.8	595,941.55	987,298.66	40° 27' 9.462 N	104° 38' 26.940 W
2,500.0	5.54	18.83	2,499.6	12.7	4.3	595,943.84	987,299.42	40° 27' 9.536 N	104° 38' 26.907 W
2,600.0	7.54	18.83	2,598.9	23.5	8.0	595,947.14	987,300.51	40° 27' 9.642 N	104° 38' 26.859 W
2,700.0	9.54	18.83	2,697.8	37.5	12.8	595,951.44	987,301.93	40° 27' 9.781 N	104° 38' 26.797 W
2,800.0	11.54	18.83	2,796.1	54.9	18.7	595,956.73	987,303.68	40° 27' 9.952 N	104° 38' 26.721 W
2,900.0	13.54	18.83	2,893.7	75.4	25.7	595,963.02	987,305.76	40° 27' 10.155 N	104° 38' 26.630 W
2,972.8	15.00	18.83	2,964.3	92.4	31.5	595,968.21	987,307.48	40° 27' 10.323 N	104° 38' 26.555 W
Begin 15° Tangent									
3,000.0	15.00	18.83	2,990.5	99.1	33.8	595,970.25	987,308.15	40° 27' 10.389 N	104° 38' 26.526 W
3,100.0	15.00	18.83	3,087.1	123.6	42.1	595,977.74	987,310.63	40° 27' 10.631 N	104° 38' 26.418 W
3,200.0	15.00	18.83	3,183.7	148.1	50.5	595,985.23	987,313.10	40° 27' 10.873 N	104° 38' 26.310 W
3,300.0	15.00	18.83	3,280.3	172.6	58.8	595,992.72	987,315.58	40° 27' 11.115 N	104° 38' 26.202 W
3,400.0	15.00	18.83	3,376.9	197.0	67.2	596,000.21	987,318.05	40° 27' 11.357 N	104° 38' 26.094 W
3,500.0	15.00	18.83	3,473.5	221.5	75.6	596,007.70	987,320.53	40° 27' 11.599 N	104° 38' 25.986 W
3,600.0	15.00	18.83	3,570.1	246.0	83.9	596,015.19	987,323.00	40° 27' 11.841 N	104° 38' 25.878 W
3,700.0	15.00	18.83	3,666.7	270.5	92.3	596,022.68	987,325.48	40° 27' 12.083 N	104° 38' 25.770 W
3,800.0	15.00	18.83	3,763.3	295.0	100.6	596,030.17	987,327.96	40° 27' 12.325 N	104° 38' 25.662 W
3,900.0	15.00	18.83	3,859.9	319.5	109.0	596,037.66	987,330.43	40° 27' 12.567 N	104° 38' 25.553 W
4,000.0	15.00	18.83	3,956.5	344.0	117.3	596,045.15	987,332.91	40° 27' 12.809 N	104° 38' 25.445 W
4,100.0	15.00	18.83	4,053.1	368.5	125.7	596,052.64	987,335.38	40° 27' 13.051 N	104° 38' 25.337 W
4,200.0	15.00	18.83	4,149.7	393.0	134.0	596,060.14	987,337.86	40° 27' 13.293 N	104° 38' 25.229 W
4,300.0	15.00	18.83	4,246.2	417.5	142.4	596,067.63	987,340.33	40° 27' 13.535 N	104° 38' 25.121 W
4,400.0	15.00	18.83	4,342.8	442.0	150.7	596,075.12	987,342.81	40° 27' 13.777 N	104° 38' 25.013 W
4,500.0	15.00	18.83	4,439.4	466.5	159.1	596,082.61	987,345.29	40° 27' 14.019 N	104° 38' 24.905 W
4,600.0	15.00	18.83	4,536.0	491.0	167.5	596,090.10	987,347.76	40° 27' 14.261 N	104° 38' 24.797 W
4,700.0	15.00	18.83	4,632.6	515.5	175.8	596,097.59	987,350.24	40° 27' 14.503 N	104° 38' 24.689 W
4,800.0	15.00	18.83	4,729.2	540.0	184.2	596,105.08	987,352.71	40° 27' 14.745 N	104° 38' 24.581 W

Planning Report - Geographic

Database:	EDM Server Database	Local Co-ordinate Reference:	Well Hungenberg UH 8
Company:	Incline Niobrara Partners	TVD Reference:	KB @ 4719.0ft
Project:	Weld County, CO	MD Reference:	KB @ 4719.0ft
Site:	SEC 27 T6N-R65W	North Reference:	True
Well:	Hungenberg UH 8	Survey Calculation Method:	Minimum Curvature
Wellbore:	Original Wellbore		
Design:	Plan 1		

Planned Survey										
Measured Depth (ft)	Inclination (°)	Azimuth (°)	Vertical Depth (ft)	+N/-S (ft)	+E/-W (ft)	Map Northing (m)	Map Easting (m)	Latitude	Longitude	
4,900.0	15.00	18.83	4,825.8	564.5	192.5	596,112.57	987,355.19	40° 27' 14.987 N	104° 38' 24.473 W	
5,000.0	15.00	18.83	4,922.4	589.0	200.9	596,120.06	987,357.66	40° 27' 15.229 N	104° 38' 24.365 W	
5,100.0	15.00	18.83	5,019.0	613.5	209.2	596,127.55	987,360.14	40° 27' 15.471 N	104° 38' 24.257 W	
5,200.0	15.00	18.83	5,115.6	638.0	217.6	596,135.04	987,362.62	40° 27' 15.713 N	104° 38' 24.149 W	
5,300.0	15.00	18.83	5,212.2	662.5	225.9	596,142.53	987,365.09	40° 27' 15.955 N	104° 38' 24.041 W	
5,400.0	15.00	18.83	5,308.8	687.0	234.3	596,150.02	987,367.57	40° 27' 16.197 N	104° 38' 23.933 W	
5,500.0	15.00	18.83	5,405.4	711.5	242.6	596,157.51	987,370.04	40° 27' 16.439 N	104° 38' 23.825 W	
5,600.0	15.00	18.83	5,502.0	736.0	251.0	596,165.00	987,372.52	40° 27' 16.681 N	104° 38' 23.717 W	
5,700.0	15.00	18.83	5,598.5	760.5	259.4	596,172.49	987,374.99	40° 27' 16.923 N	104° 38' 23.609 W	
5,800.0	15.00	18.83	5,695.1	785.0	267.7	596,179.98	987,377.47	40° 27' 17.165 N	104° 38' 23.501 W	
5,820.2	15.00	18.83	5,714.6	789.9	269.4	596,181.49	987,377.97	40° 27' 17.214 N	104° 38' 23.479 W	
5,900.0	13.40	18.83	5,792.0	808.4	275.7	596,187.16	987,379.84	40° 27' 17.397 N	104° 38' 23.397 W	
6,000.0	11.40	18.83	5,889.7	828.8	282.6	596,193.37	987,381.90	40° 27' 17.598 N	104° 38' 23.307 W	
6,100.0	9.40	18.83	5,988.0	845.9	288.5	596,198.60	987,383.62	40° 27' 17.767 N	104° 38' 23.232 W	
6,200.0	7.40	18.83	6,086.9	859.7	293.2	596,202.83	987,385.02	40° 27' 17.904 N	104° 38' 23.171 W	
6,300.0	5.40	18.83	6,186.3	870.2	296.8	596,206.06	987,386.09	40° 27' 18.008 N	104° 38' 23.124 W	
6,400.0	3.40	18.83	6,286.0	877.5	299.3	596,208.28	987,386.82	40° 27' 18.080 N	104° 38' 23.092 W	
6,500.0	1.40	18.83	6,385.9	881.5	300.6	596,209.49	987,387.22	40° 27' 18.119 N	104° 38' 23.075 W	
6,570.2	0.00	0.00	6,456.1	882.3	300.9	596,209.74	987,387.31	40° 27' 18.127 N	104° 38' 23.071 W	
KOP - Start 10°/100' Build										
6,600.0	2.98	271.78	6,485.9	882.3	300.1	596,209.75	987,387.07	40° 27' 18.127 N	104° 38' 23.081 W	
6,700.0	12.98	271.78	6,584.8	882.8	286.3	596,209.84	987,382.84	40° 27' 18.131 N	104° 38' 23.261 W	
6,800.0	22.98	271.78	6,679.8	883.7	255.4	596,210.04	987,373.45	40° 27' 18.141 N	104° 38' 23.659 W	
6,817.7	24.75	271.78	6,696.0	883.9	248.3	596,210.09	987,371.26	40° 27' 18.143 N	104° 38' 23.752 W	
Niobrara A										
6,900.0	32.98	271.78	6,768.0	885.2	208.6	596,210.35	987,359.17	40° 27' 18.155 N	104° 38' 24.265 W	
6,959.3	38.91	271.78	6,816.0	886.2	173.8	596,210.58	987,348.56	40° 27' 18.166 N	104° 38' 24.715 W	
Niobrara B2										
7,000.0	42.98	271.78	6,846.7	887.1	147.2	596,210.76	987,340.44	40° 27' 18.174 N	104° 38' 25.059 W	
7,054.9	48.47	271.78	6,885.0	888.3	107.9	596,211.01	987,328.48	40° 27' 18.186 N	104° 38' 25.567 W	
Niobrara C										
7,100.0	52.98	271.78	6,913.6	889.4	73.0	596,211.24	987,317.83	40° 27' 18.197 N	104° 38' 26.018 W	
7,200.0	62.98	271.78	6,966.5	892.0	-11.6	596,211.80	987,292.02	40° 27' 18.223 N	104° 38' 27.113 W	
7,300.0	72.98	271.78	7,004.0	894.9	-104.2	596,212.41	987,263.81	40° 27' 18.251 N	104° 38' 28.310 W	
7,400.0	82.98	271.78	7,024.8	897.9	-201.8	596,213.05	987,234.04	40° 27' 18.281 N	104° 38' 29.573 W	
7,466.4	89.62	271.78	7,029.0	900.0	-268.0	596,213.49	987,213.87	40° 27' 18.302 N	104° 38' 30.429 W	
LP - 1975' FSL & 550' FEL										
7,467.3	89.61	271.77	7,029.1	900.0	-268.9	596,213.50	987,213.59	40° 27' 18.302 N	104° 38' 30.441 W	
7,500.0	89.61	271.77	7,029.3	901.0	-301.6	596,213.71	987,203.62	40° 27' 18.312 N	104° 38' 30.863 W	
7,600.0	89.61	271.77	7,029.9	904.1	-401.5	596,214.37	987,173.15	40° 27' 18.342 N	104° 38' 32.156 W	
7,700.0	89.61	271.77	7,030.6	907.2	-501.5	596,215.02	987,142.68	40° 27' 18.373 N	104° 38' 33.449 W	
7,800.0	89.61	271.77	7,031.3	910.3	-601.4	596,215.68	987,112.21	40° 27' 18.404 N	104° 38' 34.741 W	
7,900.0	89.61	271.77	7,032.0	913.4	-701.4	596,216.33	987,081.73	40° 27' 18.434 N	104° 38' 36.034 W	
8,000.0	89.61	271.77	7,032.7	916.5	-801.3	596,216.99	987,051.26	40° 27' 18.465 N	104° 38' 37.327 W	
8,100.0	89.61	271.77	7,033.3	919.6	-901.3	596,217.64	987,020.79	40° 27' 18.495 N	104° 38' 38.619 W	
8,200.0	89.61	271.77	7,034.0	922.7	-1,001.2	596,218.30	986,990.32	40° 27' 18.526 N	104° 38' 39.912 W	
8,300.0	89.61	271.77	7,034.7	925.8	-1,101.2	596,218.96	986,959.85	40° 27' 18.556 N	104° 38' 41.205 W	
8,400.0	89.61	271.77	7,035.4	928.9	-1,201.1	596,219.61	986,929.37	40° 27' 18.587 N	104° 38' 42.497 W	
8,500.0	89.61	271.77	7,036.0	932.0	-1,301.1	596,220.27	986,898.90	40° 27' 18.617 N	104° 38' 43.790 W	
8,600.0	89.61	271.77	7,036.7	935.1	-1,401.0	596,220.92	986,868.43	40° 27' 18.648 N	104° 38' 45.083 W	
8,700.0	89.61	271.77	7,037.4	938.2	-1,501.0	596,221.58	986,837.96	40° 27' 18.679 N	104° 38' 46.375 W	
8,800.0	89.61	271.77	7,038.1	941.3	-1,600.9	596,222.23	986,807.48	40° 27' 18.709 N	104° 38' 47.668 W	
8,900.0	89.61	271.77	7,038.7	944.4	-1,700.9	596,222.89	986,777.01	40° 27' 18.740 N	104° 38' 48.961 W	
9,000.0	89.61	271.77	7,039.4	947.5	-1,800.8	596,223.55	986,746.54	40° 27' 18.770 N	104° 38' 50.253 W	

Planning Report - Geographic

Database:	EDM Server Database	Local Co-ordinate Reference:	Well Hungenberg UH 8
Company:	Incline Niobrara Partners	TVD Reference:	KB @ 4719.0ft
Project:	Weld County, CO	MD Reference:	KB @ 4719.0ft
Site:	SEC 27 T6N-R65W	North Reference:	True
Well:	Hungenberg UH 8	Survey Calculation Method:	Minimum Curvature
Wellbore:	Original Wellbore		
Design:	Plan 1		

Planned Survey										
Measured Depth (ft)	Inclination (°)	Azimuth (°)	Vertical Depth (ft)	+N/-S (ft)	+E/-W (ft)	Map Northing (m)	Map Easting (m)	Latitude	Longitude	
9,100.0	89.61	271.77	7,040.1	950.6	-1,900.8	596,224.20	986,716.07	40° 27' 18.801 N	104° 38' 51.546 W	
9,200.0	89.61	271.77	7,040.8	953.7	-2,000.7	596,224.86	986,685.59	40° 27' 18.831 N	104° 38' 52.839 W	
9,300.0	89.61	271.77	7,041.4	956.8	-2,100.7	596,225.51	986,655.12	40° 27' 18.862 N	104° 38' 54.131 W	
9,400.0	89.61	271.77	7,042.1	959.9	-2,200.6	596,226.17	986,624.65	40° 27' 18.892 N	104° 38' 55.424 W	
9,500.0	89.61	271.77	7,042.8	962.9	-2,300.6	596,226.82	986,594.18	40° 27' 18.923 N	104° 38' 56.717 W	
9,600.0	89.61	271.77	7,043.5	966.0	-2,400.5	596,227.48	986,563.71	40° 27' 18.953 N	104° 38' 58.009 W	
9,700.0	89.61	271.77	7,044.1	969.1	-2,500.5	596,228.13	986,533.23	40° 27' 18.984 N	104° 38' 59.302 W	
9,800.0	89.61	271.77	7,044.8	972.2	-2,600.4	596,228.79	986,502.76	40° 27' 19.014 N	104° 39' 0.595 W	
9,900.0	89.61	271.77	7,045.5	975.3	-2,700.4	596,229.45	986,472.29	40° 27' 19.045 N	104° 39' 1.887 W	
10,000.0	89.61	271.77	7,046.2	978.4	-2,800.3	596,230.10	986,441.82	40° 27' 19.075 N	104° 39' 3.180 W	
10,100.0	89.61	271.77	7,046.8	981.5	-2,900.3	596,230.76	986,411.34	40° 27' 19.106 N	104° 39' 4.473 W	
10,200.0	89.61	271.77	7,047.5	984.6	-3,000.2	596,231.41	986,380.87	40° 27' 19.136 N	104° 39' 5.765 W	
10,300.0	89.61	271.77	7,048.2	987.7	-3,100.2	596,232.07	986,350.40	40° 27' 19.167 N	104° 39' 7.058 W	
10,400.0	89.61	271.77	7,048.9	990.8	-3,200.1	596,232.72	986,319.93	40° 27' 19.197 N	104° 39' 8.351 W	
10,500.0	89.61	271.77	7,049.6	993.9	-3,300.1	596,233.38	986,289.45	40° 27' 19.227 N	104° 39' 9.643 W	
10,600.0	89.61	271.77	7,050.2	997.0	-3,400.0	596,234.04	986,258.98	40° 27' 19.258 N	104° 39' 10.936 W	
10,700.0	89.61	271.77	7,050.9	1,000.1	-3,500.0	596,234.69	986,228.51	40° 27' 19.288 N	104° 39' 12.229 W	
10,800.0	89.61	271.77	7,051.6	1,003.2	-3,599.9	596,235.35	986,198.04	40° 27' 19.319 N	104° 39' 13.521 W	
10,900.0	89.61	271.77	7,052.3	1,006.3	-3,699.9	596,236.00	986,167.57	40° 27' 19.349 N	104° 39' 14.814 W	
11,000.0	89.61	271.77	7,052.9	1,009.4	-3,799.8	596,236.66	986,137.09	40° 27' 19.380 N	104° 39' 16.107 W	
11,100.0	89.61	271.77	7,053.6	1,012.5	-3,899.8	596,237.31	986,106.62	40° 27' 19.410 N	104° 39' 17.399 W	
11,200.0	89.61	271.77	7,054.3	1,015.6	-3,999.7	596,237.97	986,076.15	40° 27' 19.441 N	104° 39' 18.692 W	
11,300.0	89.61	271.77	7,055.0	1,018.7	-4,099.7	596,238.62	986,045.68	40° 27' 19.471 N	104° 39' 19.985 W	
11,400.0	89.61	271.77	7,055.6	1,021.8	-4,199.6	596,239.28	986,015.20	40° 27' 19.501 N	104° 39' 21.277 W	
11,500.0	89.61	271.77	7,056.3	1,024.9	-4,299.6	596,239.94	985,984.73	40° 27' 19.532 N	104° 39' 22.570 W	
11,600.0	89.61	271.77	7,057.0	1,028.0	-4,399.5	596,240.59	985,954.26	40° 27' 19.562 N	104° 39' 23.863 W	
11,700.0	89.61	271.77	7,057.7	1,031.1	-4,499.5	596,241.25	985,923.79	40° 27' 19.593 N	104° 39' 25.155 W	
11,800.0	89.61	271.77	7,058.3	1,034.2	-4,599.4	596,241.90	985,893.31	40° 27' 19.623 N	104° 39' 26.448 W	
11,900.0	89.61	271.77	7,059.0	1,037.3	-4,699.4	596,242.56	985,862.84	40° 27' 19.654 N	104° 39' 27.741 W	
12,000.0	89.61	271.77	7,059.7	1,040.4	-4,799.3	596,243.21	985,832.37	40° 27' 19.684 N	104° 39' 29.033 W	
12,100.0	89.61	271.77	7,060.4	1,043.5	-4,899.3	596,243.87	985,801.90	40° 27' 19.714 N	104° 39' 30.326 W	
12,200.0	89.61	271.77	7,061.0	1,046.6	-4,999.2	596,244.53	985,771.43	40° 27' 19.745 N	104° 39' 31.619 W	
12,300.0	89.61	271.77	7,061.7	1,049.6	-5,099.2	596,245.18	985,740.95	40° 27' 19.775 N	104° 39' 32.912 W	
12,400.0	89.61	271.77	7,062.4	1,052.7	-5,199.1	596,245.84	985,710.48	40° 27' 19.806 N	104° 39' 34.204 W	
12,500.0	89.61	271.77	7,063.1	1,055.8	-5,299.1	596,246.49	985,680.01	40° 27' 19.836 N	104° 39' 35.497 W	
12,600.0	89.61	271.77	7,063.7	1,058.9	-5,399.0	596,247.15	985,649.54	40° 27' 19.866 N	104° 39' 36.790 W	
12,700.0	89.61	271.77	7,064.4	1,062.0	-5,499.0	596,247.80	985,619.06	40° 27' 19.897 N	104° 39' 38.082 W	
12,800.0	89.61	271.77	7,065.1	1,065.1	-5,598.9	596,248.46	985,588.59	40° 27' 19.927 N	104° 39' 39.375 W	
12,900.0	89.61	271.77	7,065.8	1,068.2	-5,698.9	596,249.11	985,558.12	40° 27' 19.957 N	104° 39' 40.668 W	
13,000.0	89.61	271.77	7,066.5	1,071.3	-5,798.8	596,249.77	985,527.65	40° 27' 19.988 N	104° 39' 41.960 W	
13,100.0	89.61	271.77	7,067.1	1,074.4	-5,898.8	596,250.43	985,497.17	40° 27' 20.018 N	104° 39' 43.253 W	
13,200.0	89.61	271.77	7,067.8	1,077.5	-5,998.7	596,251.08	985,466.70	40° 27' 20.049 N	104° 39' 44.546 W	
13,300.0	89.61	271.77	7,068.5	1,080.6	-6,098.7	596,251.74	985,436.23	40° 27' 20.079 N	104° 39' 45.838 W	
13,400.0	89.61	271.77	7,069.2	1,083.7	-6,198.6	596,252.39	985,405.76	40° 27' 20.109 N	104° 39' 47.131 W	
13,500.0	89.61	271.77	7,069.8	1,086.8	-6,298.6	596,253.05	985,375.29	40° 27' 20.140 N	104° 39' 48.424 W	
13,600.0	89.61	271.77	7,070.5	1,089.9	-6,398.5	596,253.70	985,344.81	40° 27' 20.170 N	104° 39' 49.716 W	
13,700.0	89.61	271.77	7,071.2	1,093.0	-6,498.5	596,254.36	985,314.34	40° 27' 20.200 N	104° 39' 51.009 W	
13,800.0	89.61	271.77	7,071.9	1,096.1	-6,598.4	596,255.02	985,283.87	40° 27' 20.231 N	104° 39' 52.302 W	
13,900.0	89.61	271.77	7,072.5	1,099.2	-6,698.4	596,255.67	985,253.40	40° 27' 20.261 N	104° 39' 53.594 W	
14,000.0	89.61	271.77	7,073.2	1,102.3	-6,798.3	596,256.33	985,222.92	40° 27' 20.291 N	104° 39' 54.887 W	
14,100.0	89.61	271.77	7,073.9	1,105.4	-6,898.3	596,256.98	985,192.45	40° 27' 20.322 N	104° 39' 56.180 W	
14,200.0	89.61	271.77	7,074.6	1,108.5	-6,998.2	596,257.64	985,161.98	40° 27' 20.352 N	104° 39' 57.473 W	
14,300.0	89.61	271.77	7,075.2	1,111.6	-7,098.2	596,258.29	985,131.51	40° 27' 20.382 N	104° 39' 58.765 W	
14,400.0	89.61	271.77	7,075.9	1,114.7	-7,198.1	596,258.95	985,101.03	40° 27' 20.413 N	104° 40' 0.058 W	
14,500.0	89.61	271.77	7,076.6	1,117.8	-7,298.1	596,259.60	985,070.56	40° 27' 20.443 N	104° 40' 1.351 W	

Planning Report - Geographic

Database:	EDM Server Database	Local Co-ordinate Reference:	Well Hungenberg UH 8
Company:	Incline Niobrara Partners	TVD Reference:	KB @ 4719.0ft
Project:	Weld County, CO	MD Reference:	KB @ 4719.0ft
Site:	SEC 27 T6N-R65W	North Reference:	True
Well:	Hungenberg UH 8	Survey Calculation Method:	Minimum Curvature
Wellbore:	Original Wellbore		
Design:	Plan 1		

Planned Survey										
Measured Depth (ft)	Inclination (°)	Azimuth (°)	Vertical Depth (ft)	+N/-S (ft)	+E/-W (ft)	Map Northing (m)	Map Easting (m)	Latitude	Longitude	
14,600.0	89.61	271.77	7,077.3	1,120.9	-7,398.0	596,260.26	985,040.09	40° 27' 20.473 N	104° 40' 2.643 W	
14,700.0	89.61	271.77	7,077.9	1,124.0	-7,498.0	596,260.92	985,009.62	40° 27' 20.503 N	104° 40' 3.936 W	
14,800.0	89.61	271.77	7,078.6	1,127.1	-7,597.9	596,261.57	984,979.15	40° 27' 20.534 N	104° 40' 5.229 W	
14,900.0	89.61	271.77	7,079.3	1,130.2	-7,697.9	596,262.23	984,948.67	40° 27' 20.564 N	104° 40' 6.521 W	
15,000.0	89.61	271.77	7,080.0	1,133.3	-7,797.8	596,262.88	984,918.20	40° 27' 20.594 N	104° 40' 7.814 W	
15,100.0	89.61	271.77	7,080.6	1,136.3	-7,897.8	596,263.54	984,887.73	40° 27' 20.625 N	104° 40' 9.107 W	
15,200.0	89.61	271.77	7,081.3	1,139.4	-7,997.7	596,264.19	984,857.26	40° 27' 20.655 N	104° 40' 10.399 W	
15,300.0	89.61	271.77	7,082.0	1,142.5	-8,097.7	596,264.85	984,826.78	40° 27' 20.685 N	104° 40' 11.692 W	
15,400.0	89.61	271.77	7,082.7	1,145.6	-8,197.6	596,265.51	984,796.31	40° 27' 20.715 N	104° 40' 12.985 W	
15,500.0	89.61	271.77	7,083.4	1,148.7	-8,297.6	596,266.16	984,765.84	40° 27' 20.746 N	104° 40' 14.277 W	
15,600.0	89.61	271.77	7,084.0	1,151.8	-8,397.5	596,266.82	984,735.37	40° 27' 20.776 N	104° 40' 15.570 W	
15,700.0	89.61	271.77	7,084.7	1,154.9	-8,497.5	596,267.47	984,704.89	40° 27' 20.806 N	104° 40' 16.863 W	
15,800.0	89.61	271.77	7,085.4	1,158.0	-8,597.4	596,268.13	984,674.42	40° 27' 20.836 N	104° 40' 18.156 W	
15,900.0	89.61	271.77	7,086.1	1,161.1	-8,697.4	596,268.78	984,643.95	40° 27' 20.867 N	104° 40' 19.448 W	
16,000.0	89.61	271.77	7,086.7	1,164.2	-8,797.3	596,269.44	984,613.48	40° 27' 20.897 N	104° 40' 20.741 W	
16,100.0	89.61	271.77	7,087.4	1,167.3	-8,897.3	596,270.09	984,583.01	40° 27' 20.927 N	104° 40' 22.034 W	
16,200.0	89.61	271.77	7,088.1	1,170.4	-8,997.2	596,270.75	984,552.53	40° 27' 20.957 N	104° 40' 23.326 W	
16,300.0	89.61	271.77	7,088.8	1,173.5	-9,097.2	596,271.41	984,522.06	40° 27' 20.988 N	104° 40' 24.619 W	
16,400.0	89.61	271.77	7,089.4	1,176.6	-9,197.1	596,272.06	984,491.59	40° 27' 21.018 N	104° 40' 25.912 W	
16,500.0	89.61	271.77	7,090.1	1,179.7	-9,297.1	596,272.72	984,461.12	40° 27' 21.048 N	104° 40' 27.204 W	
16,600.0	89.61	271.77	7,090.8	1,182.8	-9,397.0	596,273.37	984,430.64	40° 27' 21.078 N	104° 40' 28.497 W	
16,700.0	89.61	271.77	7,091.5	1,185.9	-9,497.0	596,274.03	984,400.17	40° 27' 21.109 N	104° 40' 29.790 W	
16,800.0	89.61	271.77	7,092.1	1,189.0	-9,596.9	596,274.68	984,369.70	40° 27' 21.139 N	104° 40' 31.083 W	
16,900.0	89.61	271.77	7,092.8	1,192.1	-9,696.9	596,275.34	984,339.23	40° 27' 21.169 N	104° 40' 32.375 W	
17,000.0	89.61	271.77	7,093.5	1,195.2	-9,796.8	596,276.00	984,308.75	40° 27' 21.199 N	104° 40' 33.668 W	
17,075.3	89.61	271.77	7,094.0	1,197.5	-9,872.0	596,276.49	984,285.83	40° 27' 21.222 N	104° 40' 34.640 W	
Total Depth										

Design Targets										
Target Name	Dip Angle (°)	Dip Dir. (°)	TVD (ft)	+N/-S (ft)	+E/-W (ft)	Northing (m)	Easting (m)	Latitude	Longitude	
- hit/miss target										
- Shape										
Hungenberg UH 8	0.00	0.00	7,094.0	1,197.5	-9,872.0	596,276.49	984,285.83	40° 27' 21.222 N	104° 40' 34.640 W	
- plan hits target center										
- Point										

Casing Points					
Measured Depth (ft)	Vertical Depth (ft)	Name	Casing Diameter (in)	Hole Diameter (in)	
2,200.0	2,200.0	Surface	9.625	9.625	
17,075.3	7,094.0	Production	5.500	5.500	

Planning Report - Geographic

Database:	EDM Server Database	Local Co-ordinate Reference:	Well Hungenberg UH 8
Company:	Incline Niobrara Partners	TVD Reference:	KB @ 4719.0ft
Project:	Weld County, CO	MD Reference:	KB @ 4719.0ft
Site:	SEC 27 T6N-R65W	North Reference:	True
Well:	Hungenberg UH 8	Survey Calculation Method:	Minimum Curvature
Wellbore:	Original Wellbore		
Design:	Plan 1		

Formations					
Measured Depth (ft)	Vertical Depth (ft)	Name	Lithology	Dip (°)	Dip Direction (°)
6,817.7	6,696.0	Niobrara A			
6,959.3	6,816.0	Niobrara B2			
7,054.9	6,885.0	Niobrara C			

Plan Annotations					
Measured Depth (ft)	Vertical Depth (ft)	Local Coordinates			
		+N/-S (ft)	+E/-W (ft)	Comment	
2,200.0	2,200.0	0.0	0.0	9-5/8"	
2,222.8	2,222.8	0.0	0.0	Begin 2° Nudge	
2,972.8	2,964.3	92.4	31.5	Begin 15° Tangent	
6,570.2	6,456.1	882.3	300.9	KOP - Start 10°/100' Build	
7,466.4	7,029.0	900.0	-268.0	LP - 1975' FSL & 550' FEL	
17,075.3	7,094.0	1,197.5	-9,872.0	Total Depth	