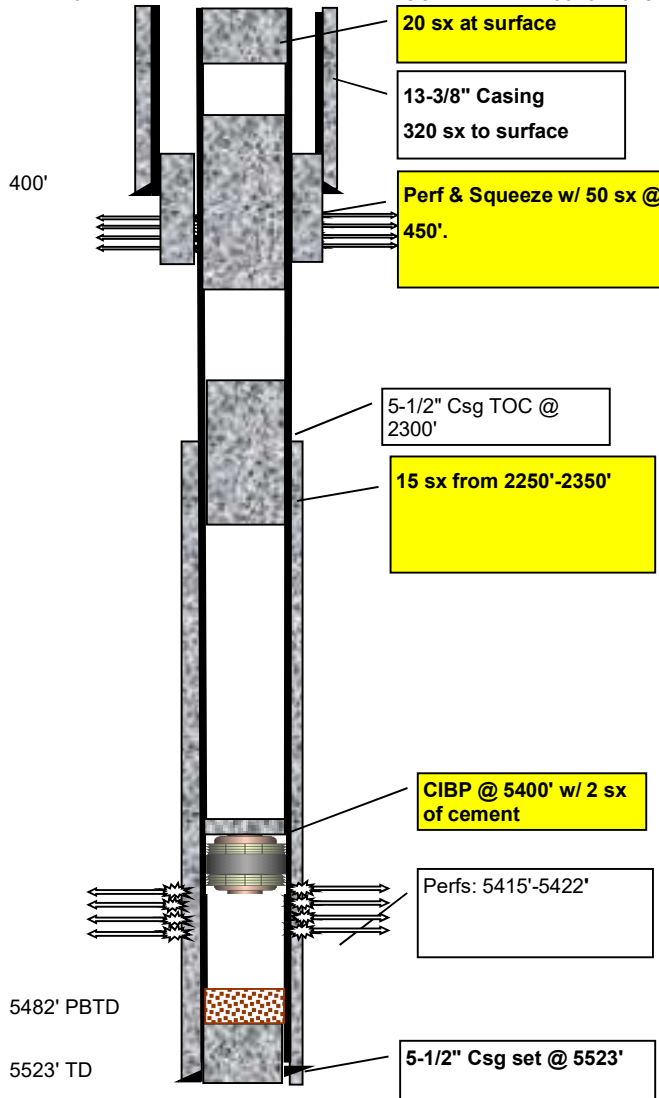


Beeson 3-21



Producer

API #	Lease ID	Permit #	County	KB	GL	Current production	Sec N/ Sec E/W	Sec	Formation
05-063-6257			Kit Karson	4319'	4309'				Morrow
Pumping Unit	Motor	State	TD	PBTD	Initial production	Lease	Lease E/W	Blk	Svy
KB = 10'		CO	5523'	5482'					



Perforations

Top	Bottom	SPF	Stimulation	OPEN?
5415	5422	4	J Sand	Morrow

Casing

Depth	Size	Wgt (# Grade)	Description
400'	13-3/8"	48	
5523'	5-1/2"	14	

Casing Cement

Casing	Sacks	TOC	Description	OD Hole	Washout
13-3/8"	320	Surface		17.5	
5-1/2"	975	2300		8.75	