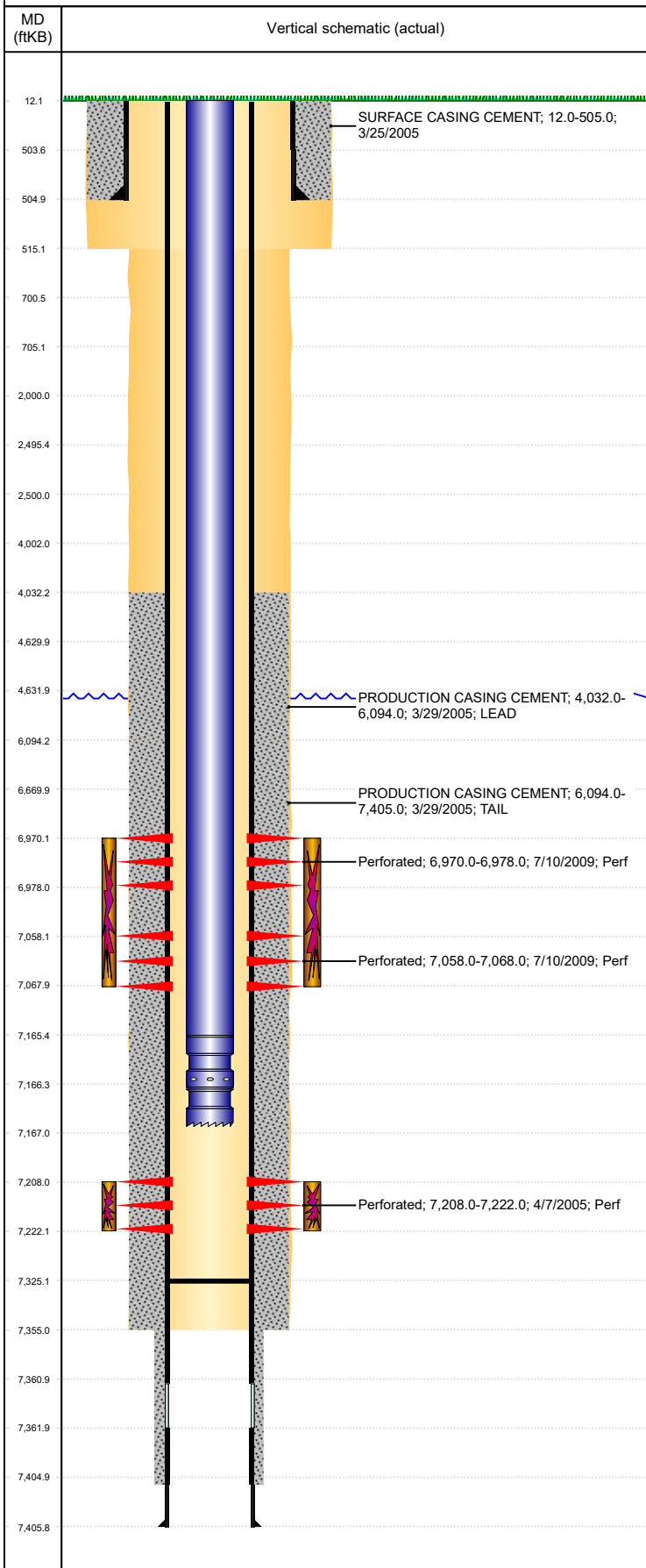


Well Name: BOULTER 16-21

VERTICAL, ORIGINAL HOLE, 5/30/2019 8:20:05 AM



Well Header									
API 05-123-22509		Business Unit DJ BASIN			District 15		Well Config VERTICAL		
KB - GL / MSL (ft... 12.00		Spud Date 3/25/2005		P & A Date		Well Production Status SI			SoRT No
Comment TD IS 7355' AND CASING CAN'T BE DEEPER THAN TD. SHOWS ON DRILLING REPORT AND ALL DATA THAT PRODUCTION CASING AT 7406'. SEARCHED WELL FILE AND STATE FOUND NO DIFFERENT FOOTAGES??									
Surface Location (Congressional)									
Qtr 3 SE	Qtr 4 SE	Section 21	Twnshp 4	Twnsh... N	Range 65	Rng E/... W	Actual Latitude (°) 40.29189200	Actual Longitude (°) -104.66061400	
Wellbore Sections									
Section Des			Size (in)			Act Top, MD (ftKB)		Act Btm, MD (ftKB)	
SURFACE			12 1/4			12		515	
PRODUCTION			7 7/8			515		7,355	
Casing Strings									
Csg Des		Run Date		OD (in)	Wt/Len (lb/ft)	Grade	Top, MD (ftKB)	MD (ftKB)	
Surface		3/25/2005		8 5/8	24.00	J-55	12.0	505.0	
Production		3/29/2005		4 1/2	11.60	I-80	12.0	7,406.0	
Cement									
Des				Start Date		Top (ftKB)		Btm (ftKB)	
SURFACE CASING CEMENT				3/25/2005		12.0		505.0	
PRODUCTION CASING CEMENT				3/29/2005		4,032.0		6,094.0	
PRODUCTION CASING CEMENT				3/29/2005		6,094.0		7,405.0	
Zone Statuses									
Zone Name	Status Date	Status	Fluid Type	Job				Prod Method	
NIOBRARA	2/7/2014	PR	Water	DRILLING/COMPLETION - ORIGINAL, 3/25/2005...				Flowing	
NIOBRARA	5/9/2017	SI						Flowing	
CODELL	4/28/2005	PR						Flowing	
CODELL	2/7/2014	PR	Water					Flowing	
Perforation Data									
Linked Zone		Bnch/Stg	Entered Shot Total	Top (ftKB)		Btm (ftKB)		Date	
NIOBRARA, ORIGINAL HOLE		A		6,970.00		6,978.00		7/10/2009	
NIOBRARA, ORIGINAL HOLE		B		7,058.00		7,068.00		7/10/2009	
CODELL, ORIGINAL HOLE				7,208.00		7,222.00		4/7/2005	
Stimulation Intervals									
Zone			Start Date			Top (ftKB)		Btm (ftKB)	
NIOBRARA, ORIGINAL HOLE			7/22/2009			6,970.0		7,068.0	
CODELL, ORIGINAL HOLE			4/8/2005			7,208.0		7,222.0	
Other In Hole									
Run Date		Des			OD (in)	Top (ftKB)		Btm (ftKB)	
Logs									
Date		Type				Top, MD (ftKB)		Btm, MD (ftKB)	
3/30/2005		COMPENSATED NEUTRON				4,250.0		7,343.0	
3/30/2005		INDUCTION				505.0		7,363.0	
4/6/2005		CEMENT BOND				3,800.0		7,290.0	
11/1/2005		CEMENT BOND				3,650.0		6,495.0	
1/17/2008		MULTI FINGER IMAGING				505.0		7,181.1	
2/9/2010		MULTI FINGER IMAGING LOG				505.0		7,149.0	
7/9/2011		MULTI FINGER IMAGING LOG				505.0		7,163.0	
Plug Back Total Depths									
Date		Type		Com				Depth (ftKB)	
4/6/2005		FILL		DEPTH LOGGER ON CBL				7,294.0	
7/9/2009		FILL		MOST RECENT CLEANOUT				7,325.0	