



6899 Pecos Street, Unit C  
Denver, Colorado 80221

CLIENT: Kerr-McGee Oil & Gas Onshore LP

LOGGED BY: Zach Mahaffey

PROJECT MANAGER: Robert Cornez

DRILLING CONTRACTOR: Tasman Geosciences, Inc.

DRILLING EQUIPMENT: AMS Powerprobe 9300-SK

DRILL BIT SIZE (INCHES): 2.375"

DATE STARTED - COMPLETED: 1/10/2017

TOTAL WELL DEPTH (FT. BGS): 12

DEPTH TO WATER (FT. BGS): 5.72 (1/26/17) ▼

Hanks Pooling Unit #1  
Production Facility

BORING / WELL ID: BH01

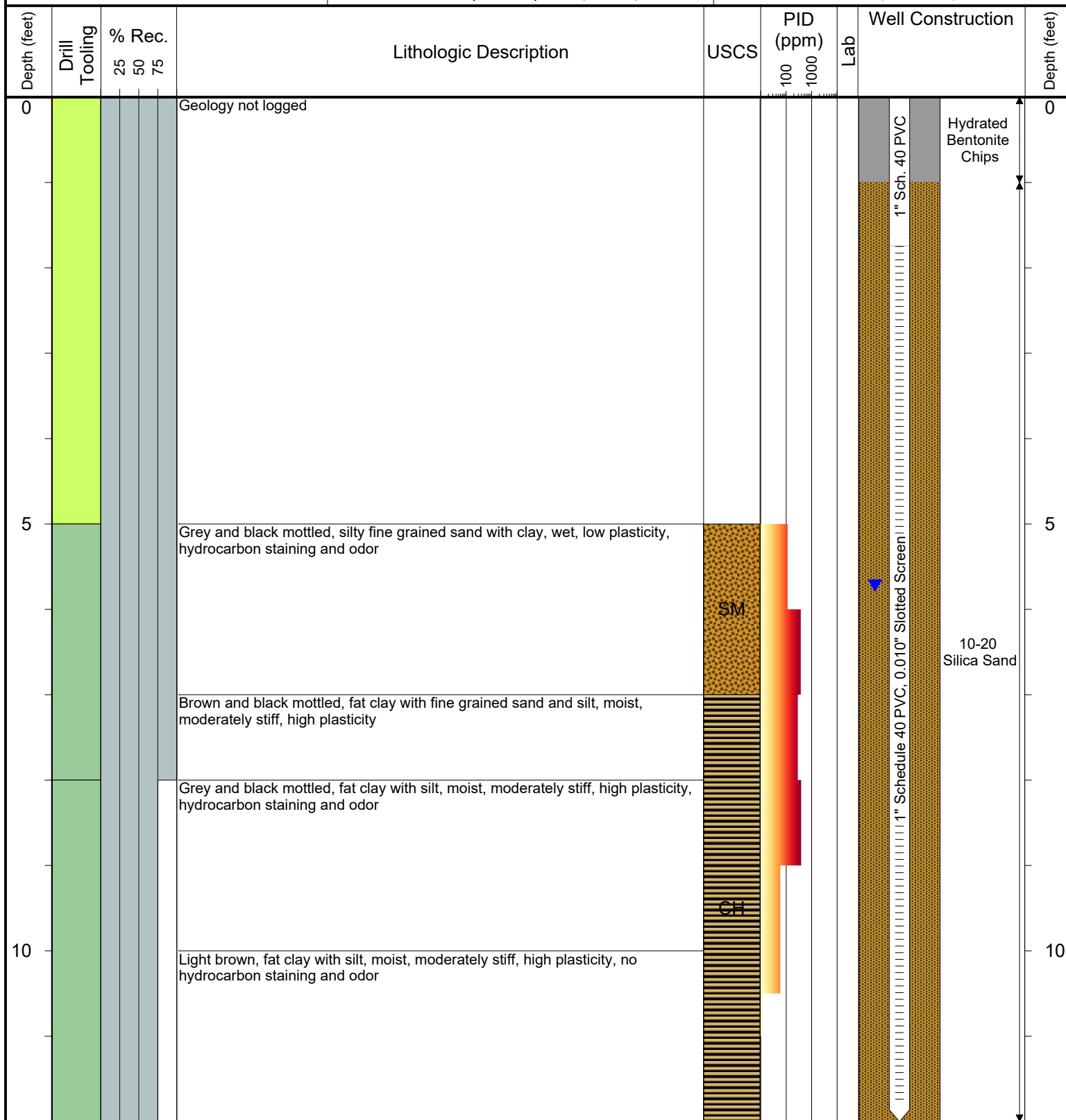
COMPLETION: Flush mount

LATITUDE (WGS 1984): 40.09045024

LONGITUDE (WGS 1984): -104.8822916

CASING ELEVATION (FT. AMSL): 4980.32

GROUND ELEVATION (FT. AMSL): 4980.51



Drilling / Sample Method:

- Macro-Core
- Hand Auger
- Expendable Well Tip
- Hydrovac

Laboratory Sample Types:

- Geotechnical Lab
- Analytical Chemistry Lab
- Geotechnical & Analytical Chemistry Lab



6899 Pecos Street, Unit C  
Denver, Colorado 80221

CLIENT: Kerr-McGee Oil & Gas Onshore LP

LOGGED BY: Zach Mahaffey

PROJECT MANAGER: Robert Cornez

DRILLING CONTRACTOR: Tasman Geosciences, Inc.

DRILLING EQUIPMENT: AMS Powerprobe 9300-SK

DRILL BIT SIZE (INCHES): 2.375"

DATE STARTED - COMPLETED: 1/10/2017

TOTAL WELL DEPTH (FT. BGS): 12

DEPTH TO WATER (FT. BGS): 5.99 (1/26/17)

Hanks Pooling Unit #1  
Production Facility

BORING / WELL ID: BH02

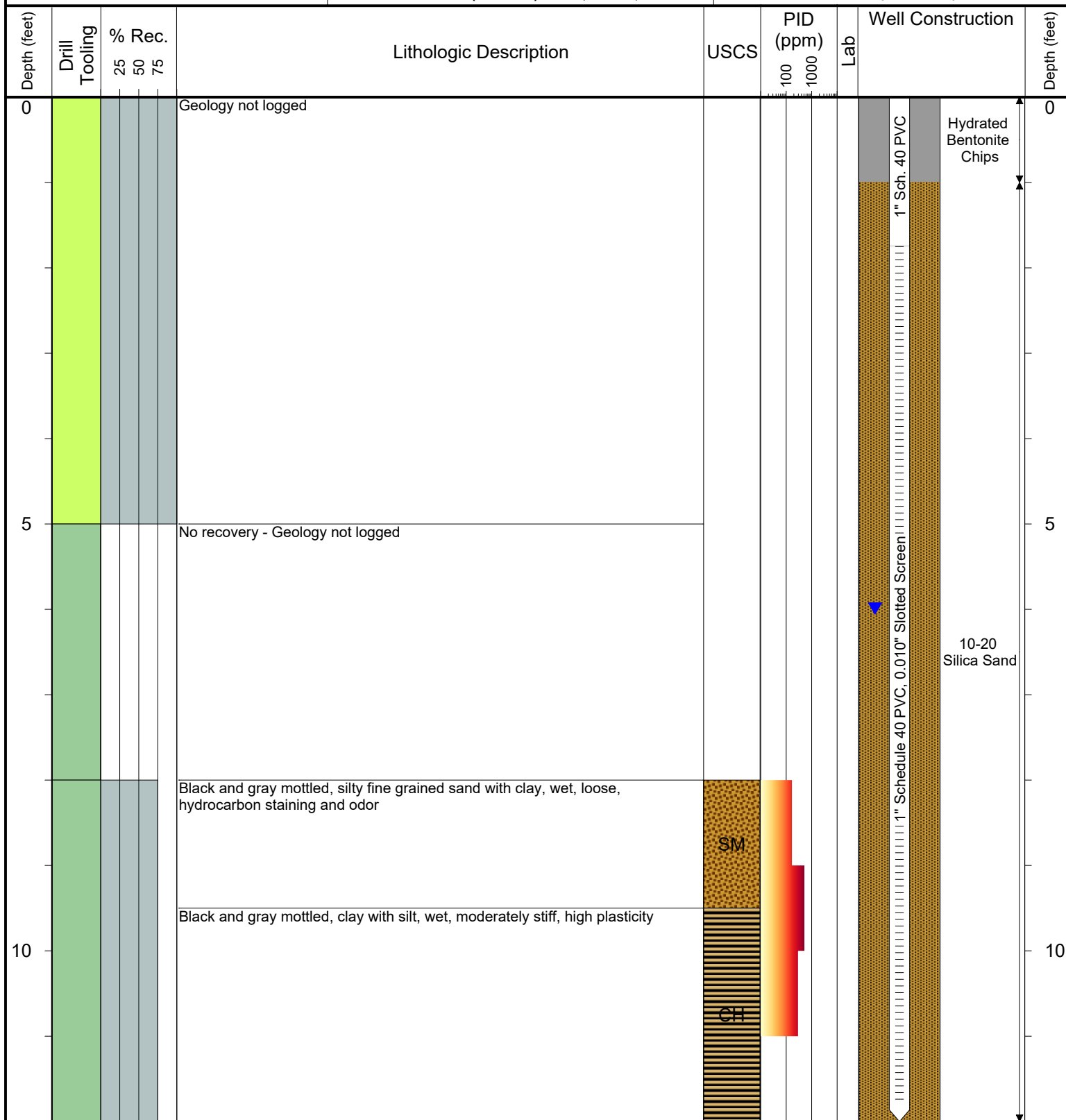
COMPLETION: Flush mount

LATITUDE (WGS 1984): 40.0903277

LONGITUDE (WGS 1984): -104.882058

CASING ELEVATION (FT. AMSL): 4979.41

GROUND ELEVATION (FT. AMSL): 4979.59



Drilling / Sample Method:

Macro-Core  
Expendable Well Tip  
Hand Auger  
Hydrovac

Laboratory Sample Types:

Geotechnical Lab  
Analytical Chemistry Lab  
Geotechnical & Analytical Chemistry Lab



6899 Pecos Street, Unit C  
Denver, Colorado 80221

CLIENT: Kerr-McGee Oil & Gas Onshore LP

LOGGED BY: Zach Mahaffey

PROJECT MANAGER: Robert Cornez

DRILLING CONTRACTOR: Tasman Geosciences, Inc.

DRILLING EQUIPMENT: AMS Powerprobe 9300-SK

DRILL BIT SIZE (INCHES): 2.375"

DATE STARTED - COMPLETED: 1/11/2017

TOTAL WELL DEPTH (FT. BGS): 12

DEPTH TO WATER (FT. BGS): 3.42 (1/26/17) ▼

Hanks Pooling Unit #1  
Production Facility

BORING / WELL ID: BH03

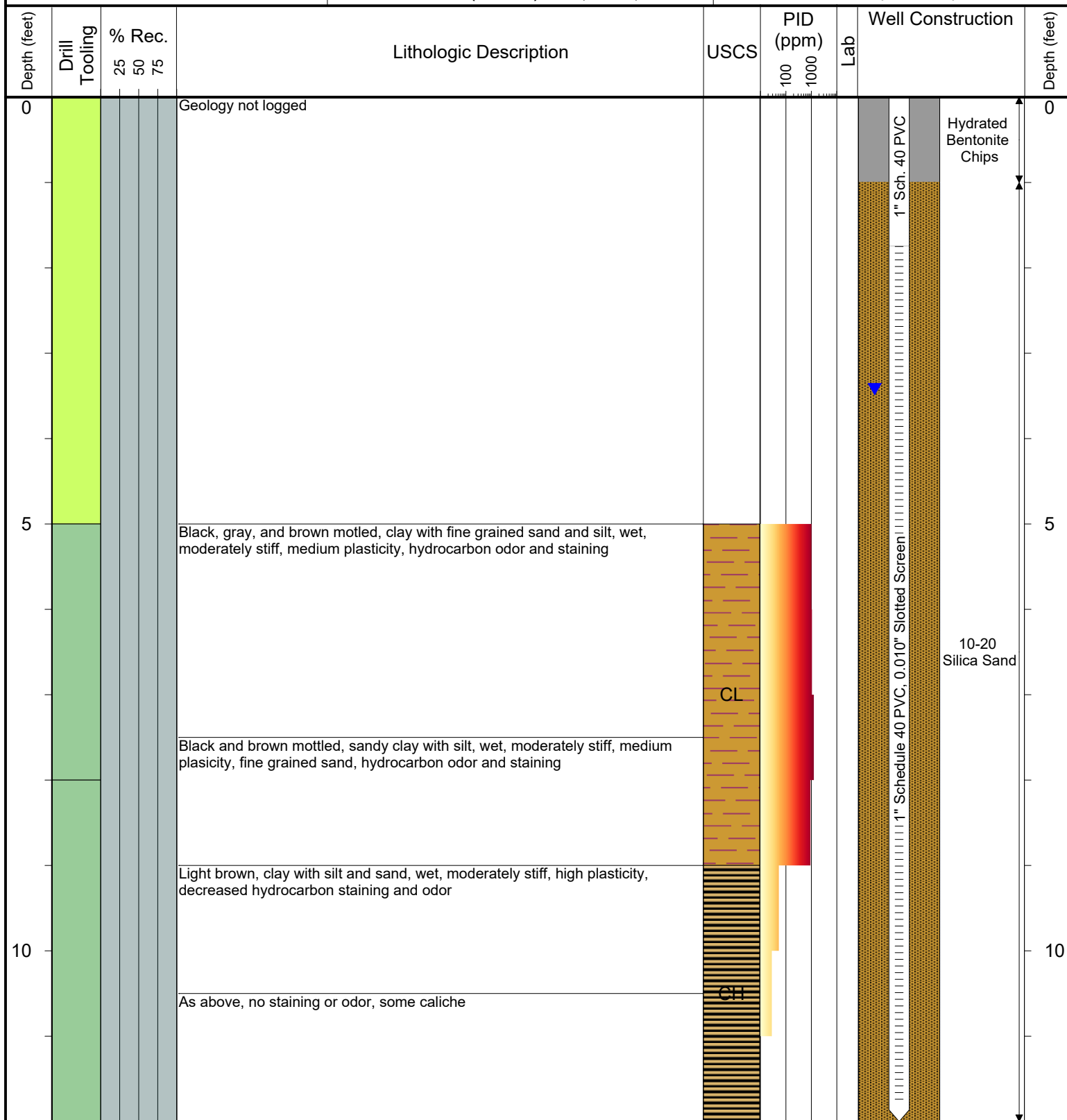
COMPLETION: Stick-up - 3.03'

LATITUDE (WGS 1984): 40.0906206

LONGITUDE (WGS 1984): -104.881819

CASING ELEVATION (FT. AMSL): 4979.52

GROUND ELEVATION (FT. AMSL): 4976.49



Drilling / Sample Method:

- Macro-Core
- Hand Auger
- Expendable Well Tip
- Hydrovac

Laboratory Sample Types:

- Geotechnical Lab
- Analytical Chemistry Lab
- Geotechnical & Analytical Chemistry Lab



6899 Pecos Street, Unit C  
Denver, Colorado 80221

CLIENT: Kerr-McGee Oil & Gas Onshore LP

LOGGED BY: Zach Mahaffey

PROJECT MANAGER: Robert Cornez

DRILLING CONTRACTOR: Tasman Geosciences, Inc.

DRILLING EQUIPMENT: AMS Powerprobe 9300-SK

DRILL BIT SIZE (INCHES): 2.375"

DATE STARTED - COMPLETED: 1/11/2017

TOTAL WELL DEPTH (FT. BGS): 12

DEPTH TO WATER (FT. BGS): 2.70 (1/26/17) ▼

Hanks Pooling Unit #1  
Production Facility

BORING / WELL ID: BH04

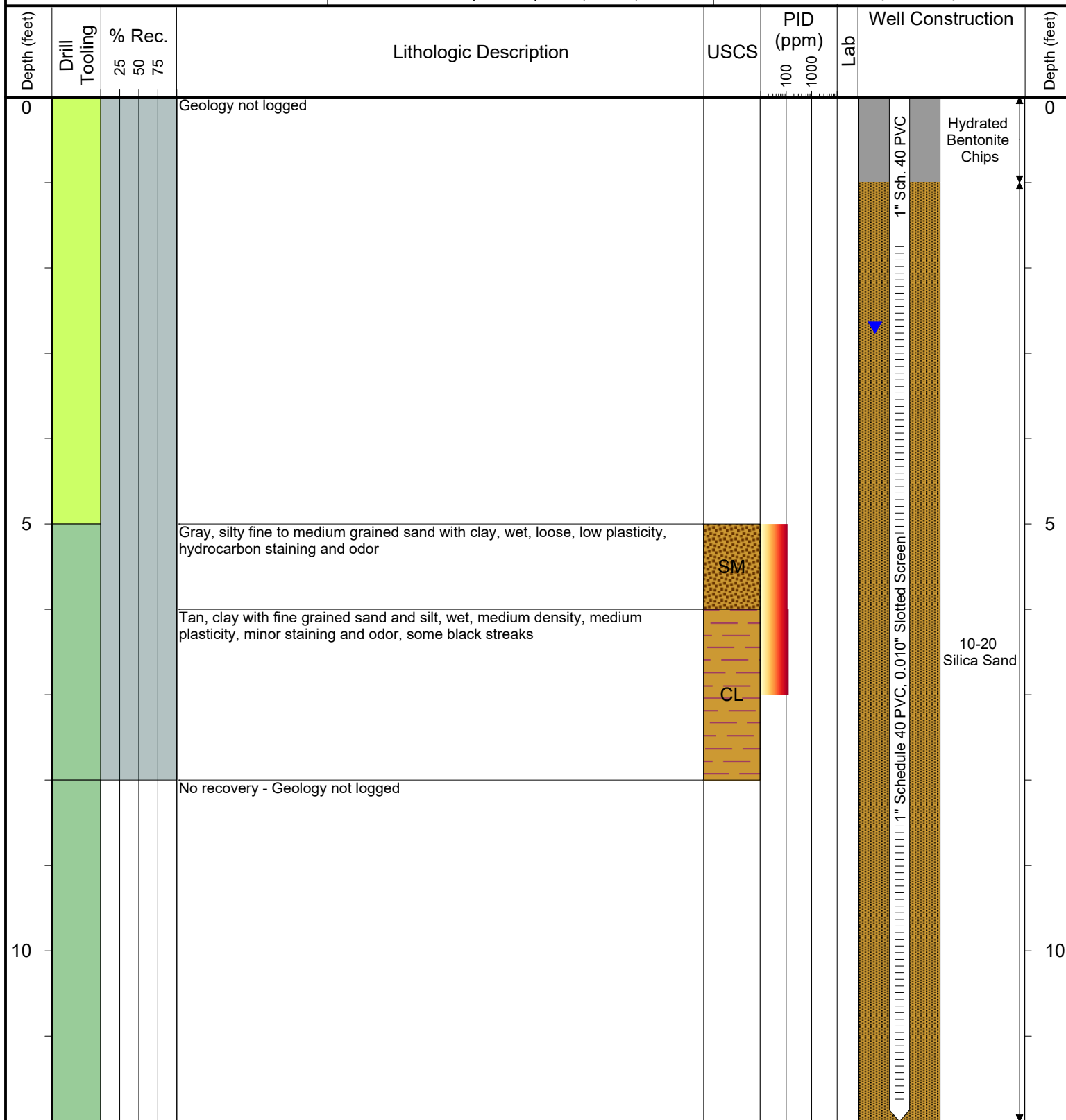
COMPLETION: Stick-up - 2.89'

LATITUDE (WGS 1984): 40.09063348

LONGITUDE (WGS 1984): -104.8820009

CASING ELEVATION (FT. AMSL): 4979.47

GROUND ELEVATION (FT. AMSL): 4976.58



Drilling / Sample Method:

- Macro-Core
- Hand Auger
- Expendable Well Tip
- Hydrovac

Laboratory Sample Types:

- Geotechnical Lab
- Analytical Chemistry Lab
- Geotechnical & Analytical Chemistry Lab



6899 Pecos Street, Unit C  
Denver, Colorado 80221

CLIENT: Kerr-McGee Oil & Gas Onshore LP

LOGGED BY: Zach Mahaffey

PROJECT MANAGER: Robert Cornez

DRILLING CONTRACTOR: Tasman Geosciences, Inc.

DRILLING EQUIPMENT: AMS Powerprobe 9300-SK

DRILL BIT SIZE (INCHES): 2.375"

DATE STARTED - COMPLETED: 1/11/2017

TOTAL WELL DEPTH (FT. BGS): 12

DEPTH TO WATER (FT. BGS): 3.35 (1/26/17) ▼

Hanks Pooling Unit #1  
Production Facility

BORING / WELL ID: BH05

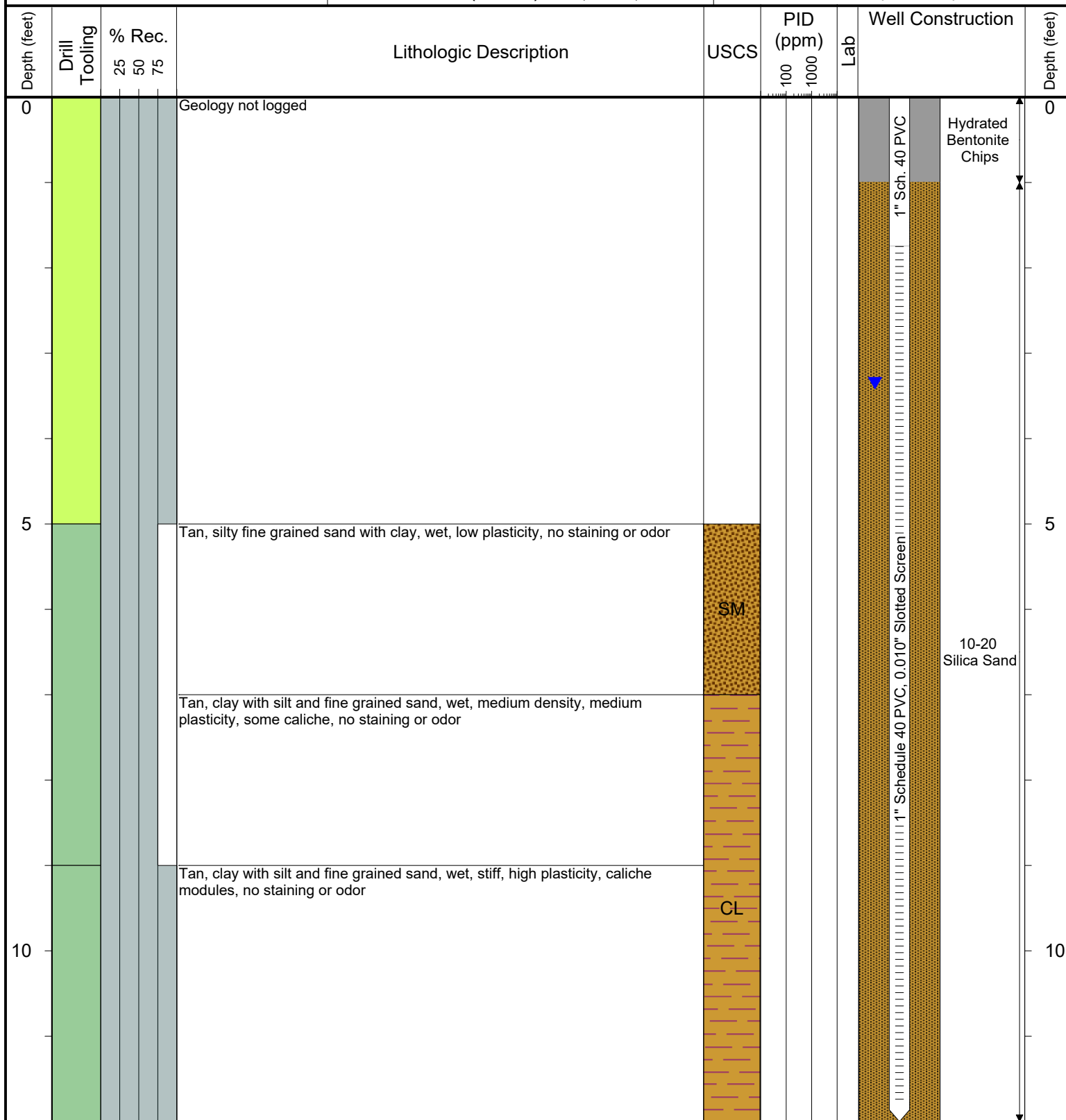
COMPLETION: Stick-up - 3.13'

LATITUDE (WGS 1984): 40.09047704

LONGITUDE (WGS 1984): -104.881718

CASING ELEVATION (FT. AMSL): 4978.62

GROUND ELEVATION (FT. AMSL): 4975.49



Drilling / Sample Method:

Macro-Core  
Expendable Well Tip  
Hand Auger  
Hydrovac

Laboratory Sample Types:

Geotechnical Lab  
Analytical Chemistry Lab  
Geotechnical & Analytical Chemistry Lab



6899 Pecos Street, Unit C  
Denver, Colorado 80221

CLIENT: Kerr-McGee Oil & Gas Onshore LP

LOGGED BY: Zach Mahaffey

PROJECT MANAGER: Robert Cornez

DRILLING CONTRACTOR: Tasman Geosciences, Inc.

DRILLING EQUIPMENT: AMS Powerprobe 9300-SK

DRILL BIT SIZE (INCHES): 2.375"

DATE STARTED - COMPLETED: 1/11/2017

TOTAL WELL DEPTH (FT. BGS): 12

DEPTH TO WATER (FT. BGS): 3.47 (1/26/17) ▼

Hanks Pooling Unit #1  
Production Facility

BORING / WELL ID: BH06

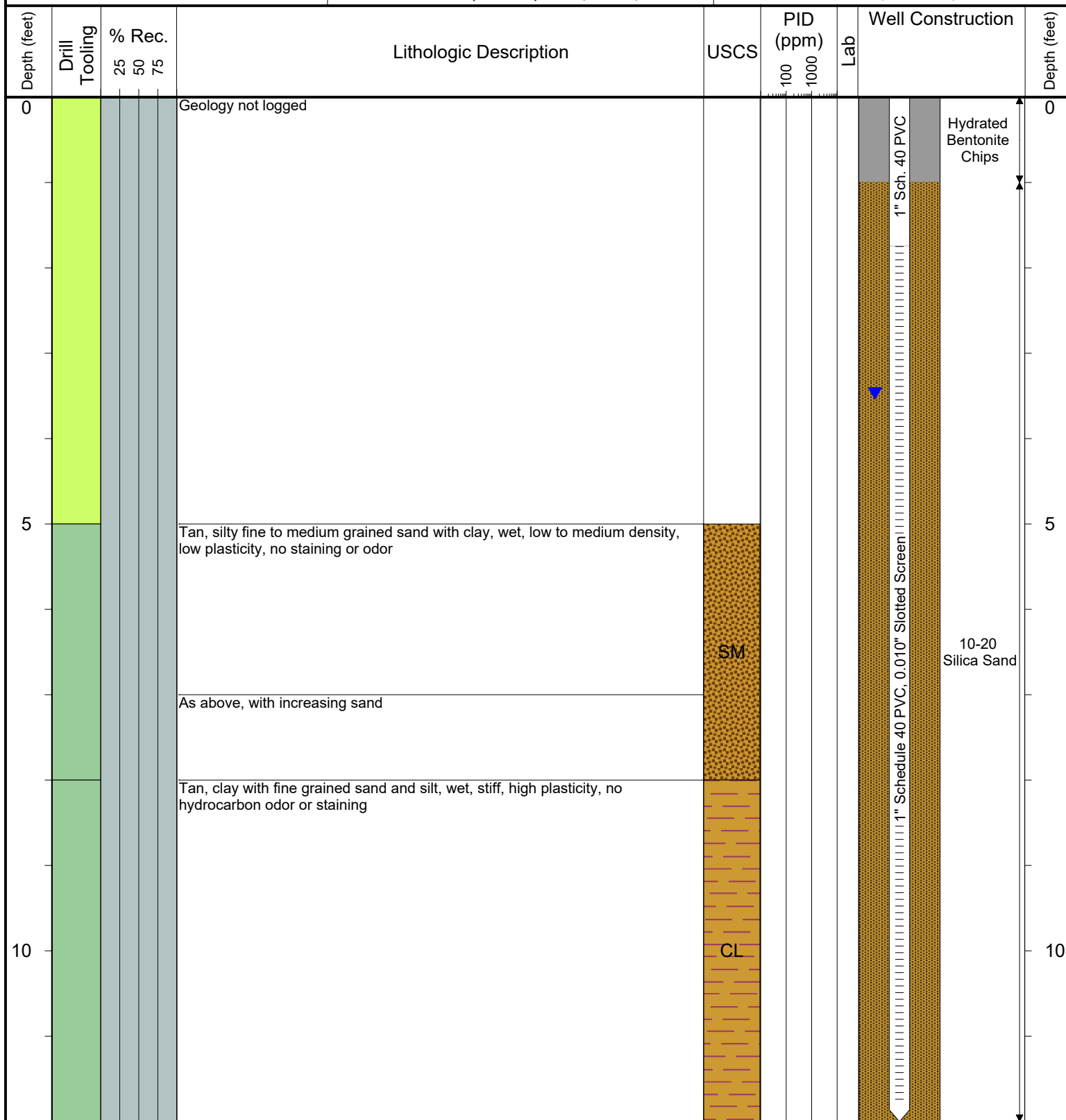
COMPLETION: Stick-up - 3.73'

LATITUDE (WGS 1984): 40.09036562

LONGITUDE (WGS 1984): -104.8816788

CASING ELEVATION (FT. AMSL): 4979.11

GROUND ELEVATION (FT. AMSL): 4975.38



Drilling / Sample Method:

- Macro-Core
- Hand Auger
- Expendable Well Tip
- Hydrovac

Laboratory Sample Types:

- Geotechnical Lab
- Analytical Chemistry Lab
- Geotechnical & Analytical Chemistry Lab



6899 Pecos Street, Unit C  
Denver, Colorado 80221

CLIENT: Kerr-McGee Oil & Gas Onshore LP

LOGGED BY: Zach Mahaffey

PROJECT MANAGER: Robert Cornez

DRILLING CONTRACTOR: Tasman Geosciences, Inc.

DRILLING EQUIPMENT: AMS Powerprobe 9300-SK

DRILL BIT SIZE (INCHES): 2.375"

DATE STARTED - COMPLETED: 1/11/2017

TOTAL WELL DEPTH (FT. BGS): 12

DEPTH TO WATER (FT. BGS): 4.19 (1/26/17)

Hanks Pooling Unit #1  
Production Facility

BORING / WELL ID: BH07

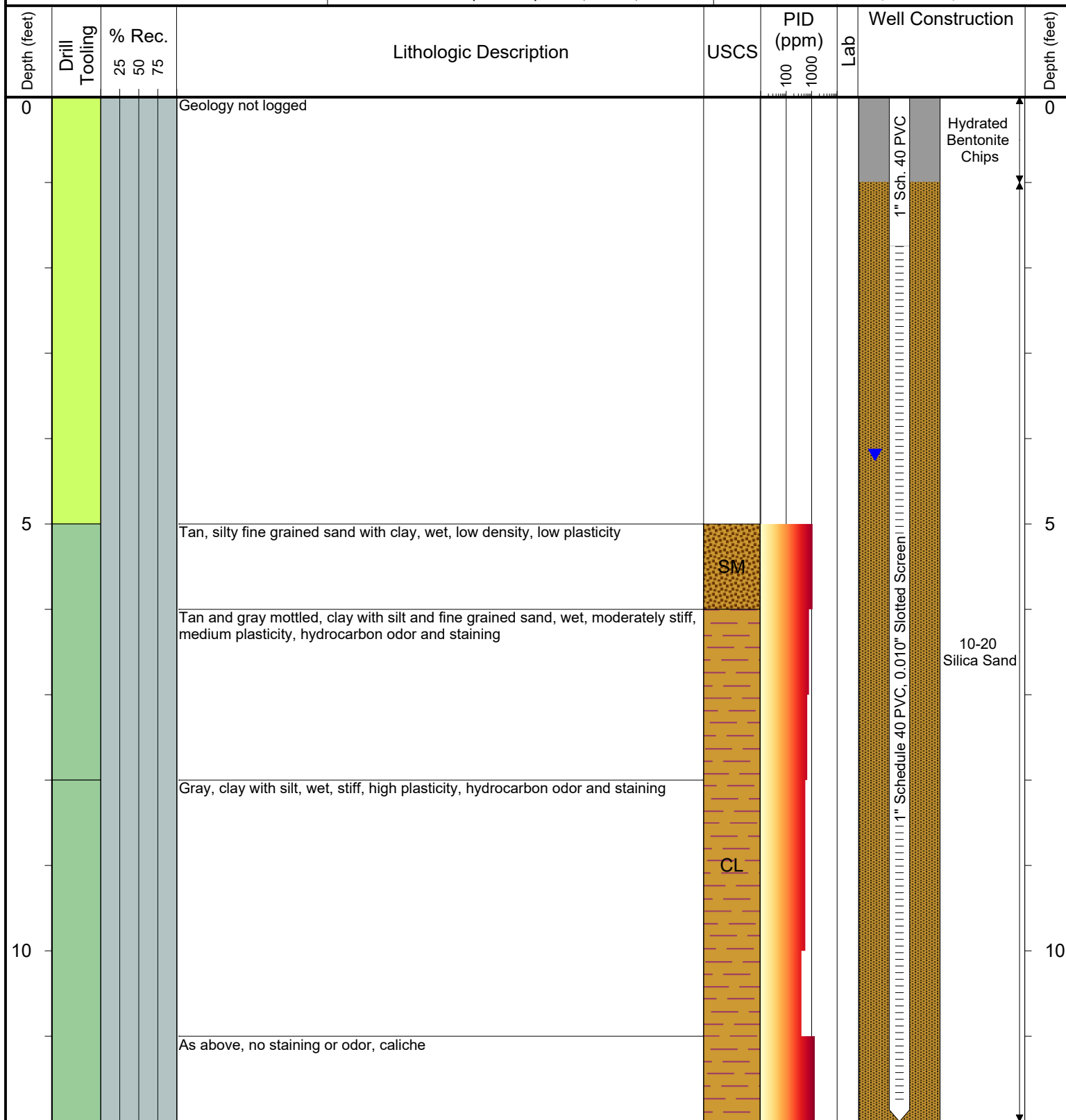
COMPLETION: Stick-up - 3.94'

LATITUDE (WGS 1984): 40.0902101

LONGITUDE (WGS 1984): -104.8818289

CASING ELEVATION (FT. AMSL): 4980.85

GROUND ELEVATION (FT. AMSL): 4976.91



Drilling / Sample Method:

Macro-Core  
Expendable Well Tip  
Hand Auger  
Hydrovac

Laboratory Sample Types:

Geotechnical Lab  
Analytical Chemistry Lab  
Geotechnical & Analytical Chemistry Lab



6899 Pecos Street, Unit C  
Denver, Colorado 80221

CLIENT: Kerr-McGee Oil & Gas Onshore LP

LOGGED BY: Zach Mahaffey

PROJECT MANAGER: Robert Cornez

DRILLING CONTRACTOR: Tasman Geosciences, Inc.

DRILLING EQUIPMENT: AMS Powerprobe 9300-SK

DRILL BIT SIZE (INCHES): 2.375"

DATE STARTED - COMPLETED: 1/11/2017

TOTAL WELL DEPTH (FT. BGS): 12

DEPTH TO WATER (FT. BGS): 3.23 (1/26/17)

Hanks Pooling Unit #1  
Production Facility

BORING / WELL ID: BH08

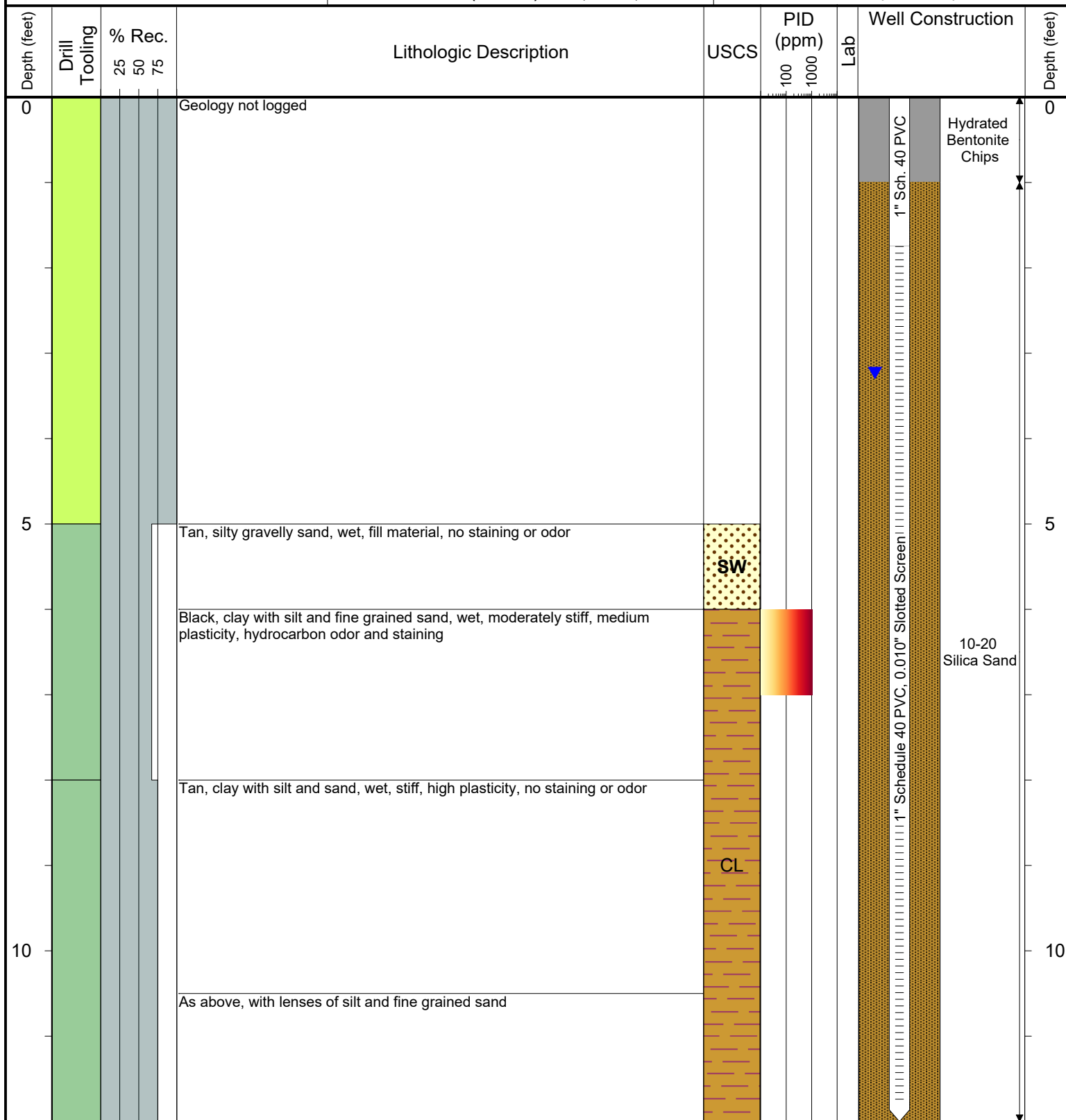
COMPLETION: Stick-up - 2.83'

LATITUDE (WGS 1984): 40.09035795

LONGITUDE (WGS 1984): -104.8818839

CASING ELEVATION (FT. AMSL): 4979.16

GROUND ELEVATION (FT. AMSL): 4976.33



Drilling / Sample Method:

Macro-Core  
Expendable Well Tip  
Hand Auger  
Hydrovac

Laboratory Sample Types:

Geotechnical Lab  
Analytical Chemistry Lab  
Geotechnical & Analytical Chemistry Lab





6899 Pecos Street, Unit C  
Denver, Colorado 80221

CLIENT: Kerr-McGee Oil & Gas Onshore LP

LOGGED BY: Zach Mahaffey

PROJECT MANAGER: Robert Cornez

DRILLING CONTRACTOR: Tasman Geosciences, Inc.

DRILLING EQUIPMENT: AMS Powerprobe 9300-SK

DRILL BIT SIZE (INCHES): 2.375"

DATE STARTED - COMPLETED: 1/11/2017

TOTAL WELL DEPTH (FT. BGS): 12

DEPTH TO WATER (FT. BGS): 4.36 (1/26/17) ▼

Hanks Pooling Unit #1  
Production Facility

BORING / WELL ID: BH09

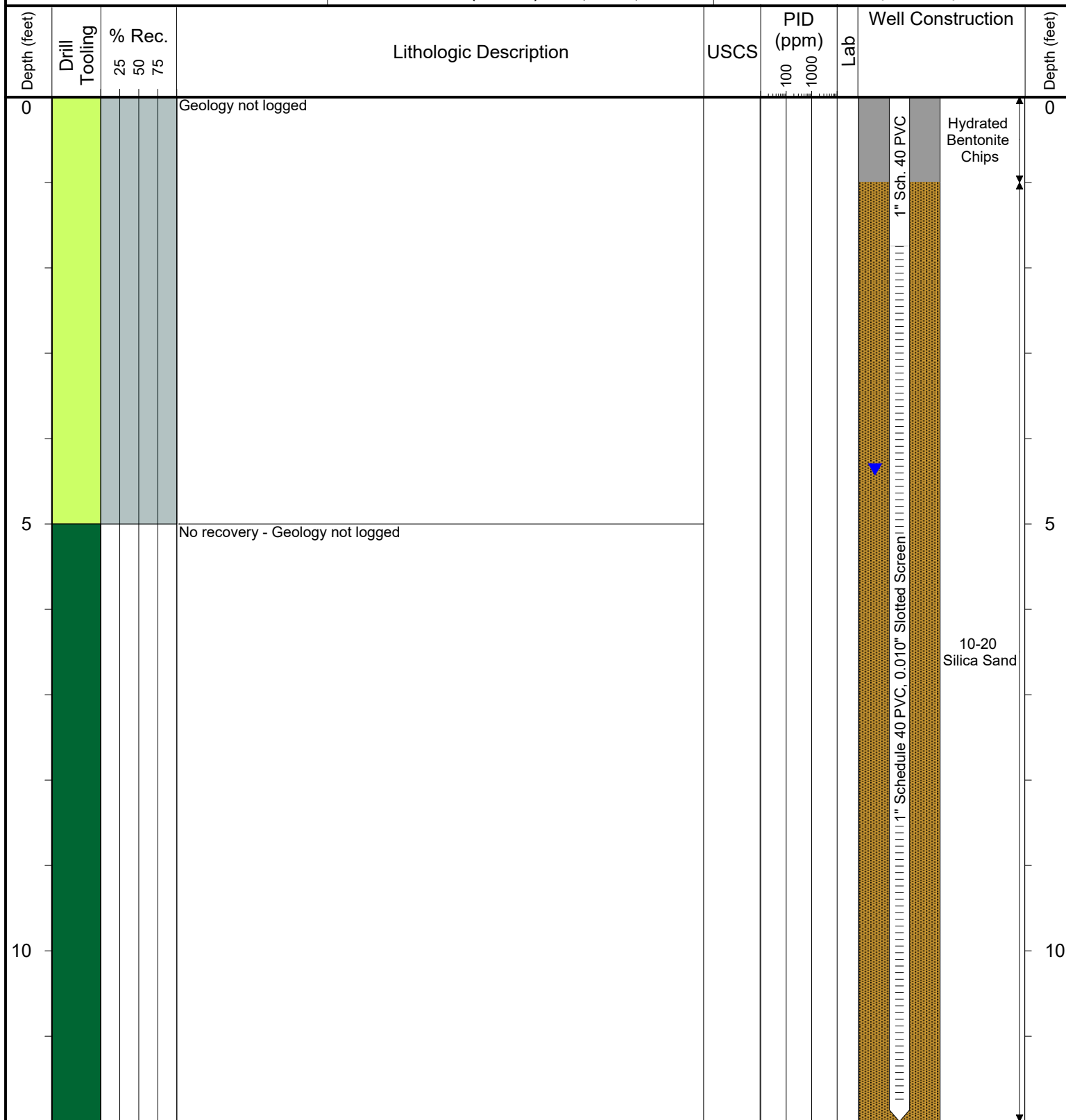
COMPLETION: Flush mount

LATITUDE (WGS 1984): 40.0904666

LONGITUDE (WGS 1984): -104.8821082

CASING ELEVATION (FT. AMSL): 4977.76

GROUND ELEVATION (FT. AMSL): 4977.96



Drilling / Sample Method:

Macro-Core  
Expendable Well Tip

Hand Auger  
Hydrovac

Laboratory Sample Types:

Geotechnical Lab  
Analytical Chemistry Lab

Geotechnical & Analytical Chemistry Lab



6899 Pecos Street, Unit C  
Denver, Colorado 80221

CLIENT: Kerr-McGee Oil & Gas Onshore LP

LOGGED BY: Zach Mahaffey

PROJECT MANAGER: Robert Cornez

DRILLING CONTRACTOR: Tasman Geosciences, Inc.

DRILLING EQUIPMENT: AMS Powerprobe 9300-SK

DRILL BIT SIZE (INCHES): 2.375"

DATE STARTED - COMPLETED: 1/11/2017

TOTAL WELL DEPTH (FT. BGS): 12

DEPTH TO WATER (FT. BGS): 3.72 (1/26/17)

Hanks Pooling Unit #1  
Production Facility

BORING / WELL ID: BH10

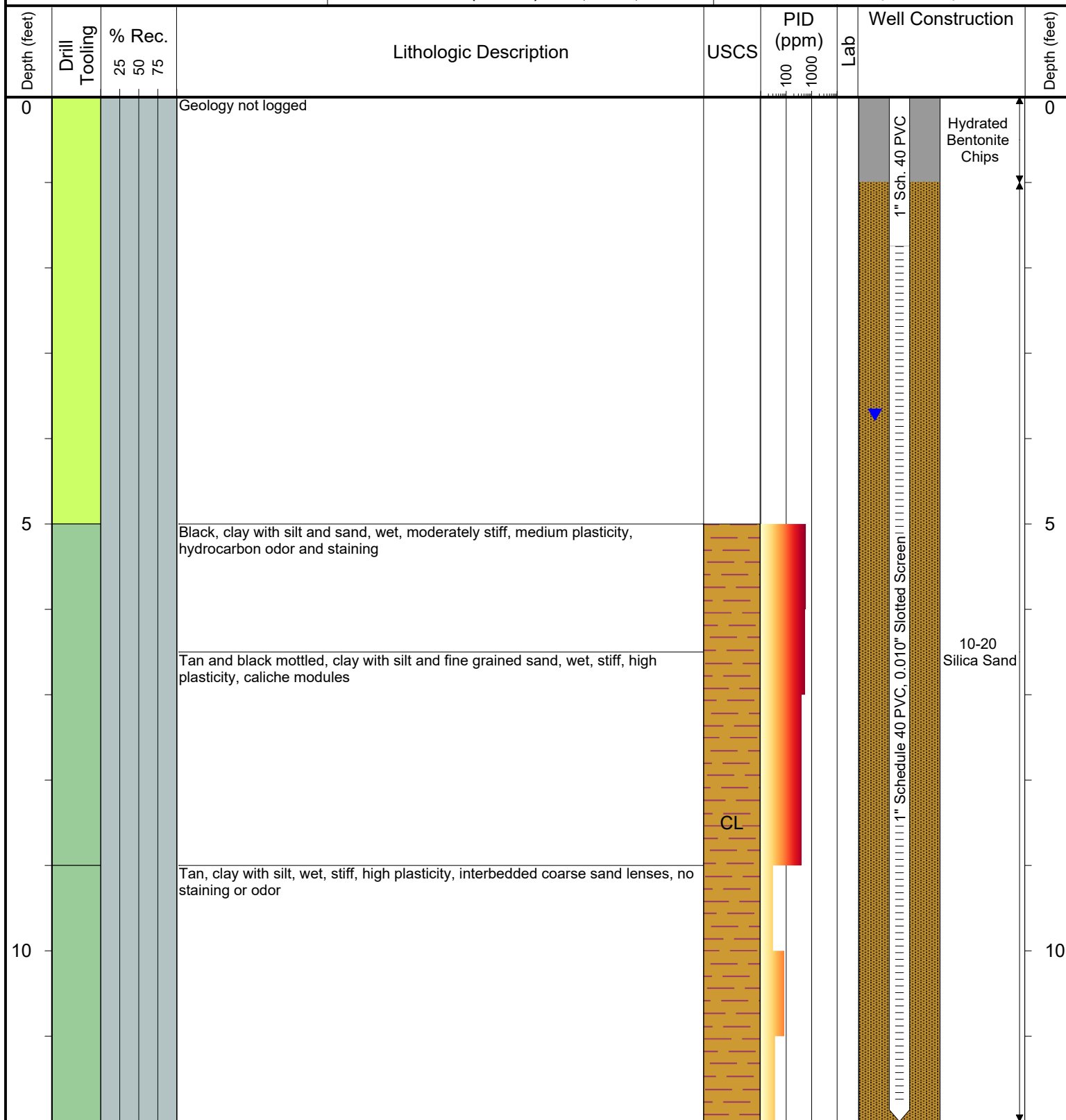
COMPLETION: Flush mount

LATITUDE (WGS 1984): 40.09061933

LONGITUDE (WGS 1984): -104.8821448

CASING ELEVATION (FT. AMSL): 4977.92

GROUND ELEVATION (FT. AMSL): 4978.07



Drilling / Sample Method:

Macro-Core

Expendable Well Tip

Hand Auger

Hydrovac

Laboratory Sample Types:

Geotechnical Lab

Analytical Chemistry Lab



Geotechnical & Analytical Chemistry Lab



6899 Pecos Street, Unit C  
Denver, Colorado 80221

CLIENT: Kerr-McGee Oil & Gas Onshore LP

LOGGED BY: Zach Mahaffey

PROJECT MANAGER: Robert Cornez

DRILLING CONTRACTOR: Tasman Geosciences, Inc.

DRILLING EQUIPMENT: AMS Powerprobe 9300-SK

DRILL BIT SIZE (INCHES): 2.375"

DATE STARTED - COMPLETED: 1/11/2017

TOTAL WELL DEPTH (FT. BGS): 12

DEPTH TO WATER (FT. BGS): 4.46 (1/26/17) ▼

Hanks Pooling Unit #1  
Production Facility

BORING / WELL ID: BH11

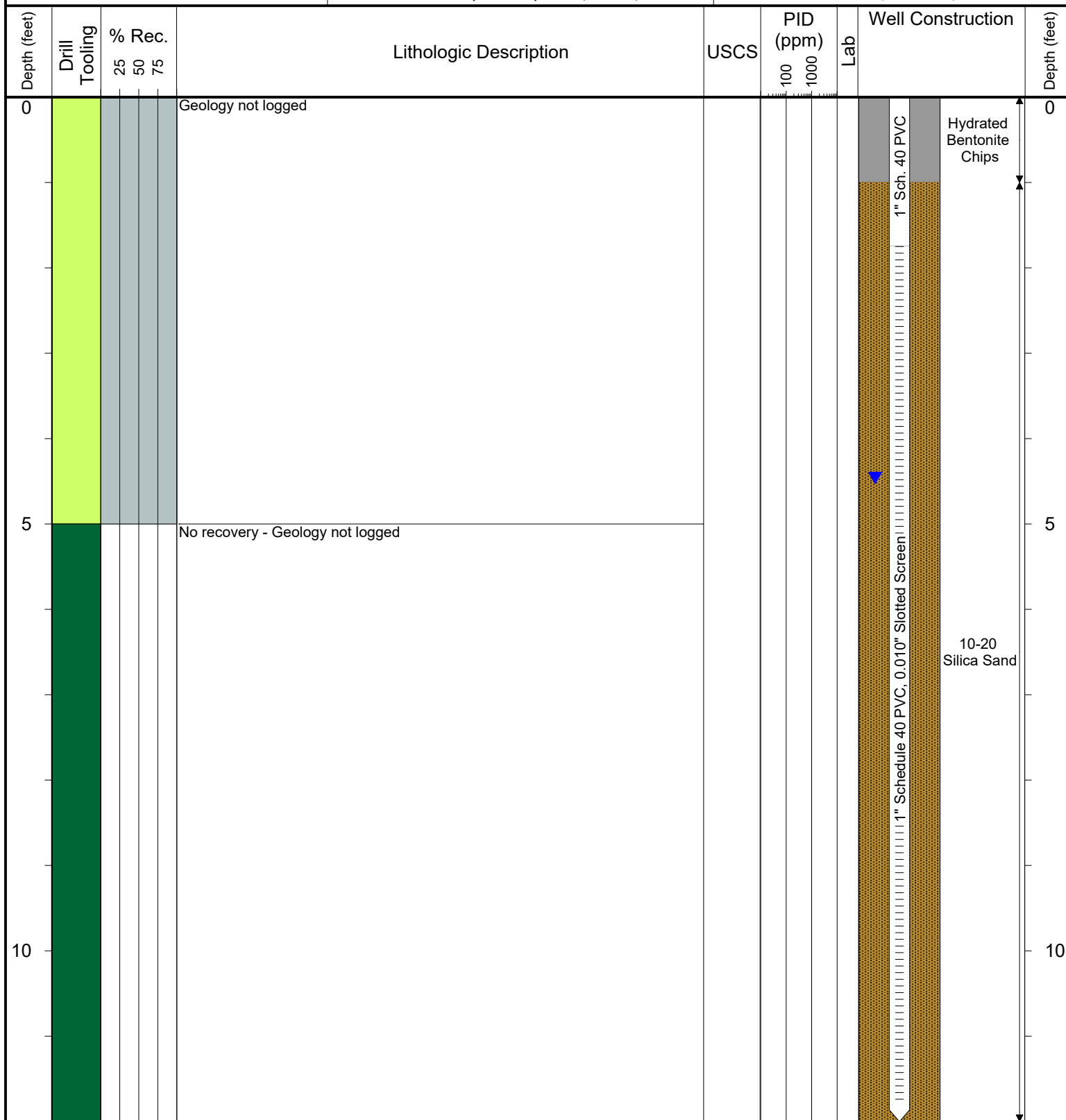
COMPLETION: Stick-up - 2.93'

LATITUDE (WGS 1984): 40.09055498

LONGITUDE (WGS 1984): -104.8822067

CASING ELEVATION (FT. AMSL): 4981.97

GROUND ELEVATION (FT. AMSL): 4979.04



Drilling / Sample Method:

Macro-Core  
Expendable Well Tip

Hand Auger  
Hydrovac

Laboratory Sample Types:

Geotechnical Lab  
Analytical Chemistry Lab

Geotechnical & Analytical Chemistry Lab



6899 Pecos Street, Unit C  
Denver, Colorado 80221

CLIENT: Kerr-McGee Oil & Gas Onshore LP

LOGGED BY: Eric Siegel, P.G.

PROJECT MANAGER: Robert Cornez

DRILLING CONTRACTOR: Tasman Geosciences, Inc.

DRILLING EQUIPMENT: AMS Powerprobe 9300-SK

DRILL BIT SIZE (INCHES): 2.375"

DATE STARTED - COMPLETED: 4/12/2017

TOTAL WELL DEPTH (FT. BGS): 12

DEPTH TO WATER (FT. BGS): 6.56 (4/17/17)

Hanks Pooling Unit #1  
Production Facility

BORING / WELL ID: BH12

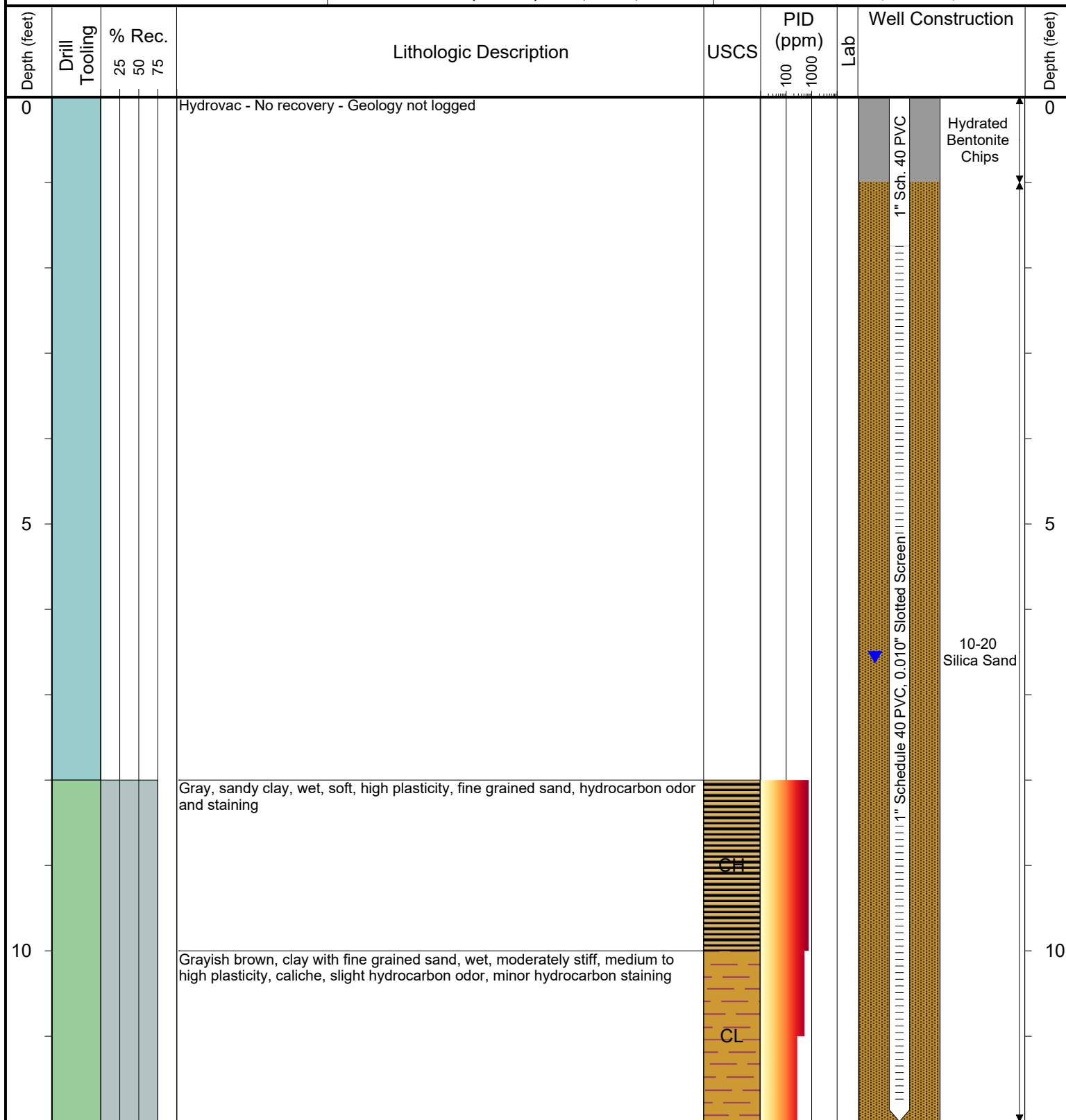
COMPLETION: Flush mount

LATITUDE (WGS 1984): 40.090291341

LONGITUDE (WGS 1984): -104.88218566

CASING ELEVATION (FT. AMSL): 4980.21

GROUND ELEVATION (FT. AMSL): 4980.61



Drilling / Sample Method:

Macro-Core  
Expendable Well Tip  
Hand Auger  
Hydrovac

Laboratory Sample Types:

Geotechnical Lab  
Analytical Chemistry Lab  
Geotechnical & Analytical Chemistry Lab



6899 Pecos Street, Unit C  
Denver, Colorado 80221

CLIENT: Kerr-McGee Oil & Gas Onshore LP

LOGGED BY: Eric Siegel, P.G.

PROJECT MANAGER: Robert Cornez

DRILLING CONTRACTOR: Tasman Geosciences, Inc.

DRILLING EQUIPMENT: AMS Powerprobe 9300-SK

DRILL BIT SIZE (INCHES): 2.375"

DATE STARTED - COMPLETED: 4/12/2017

TOTAL WELL DEPTH (FT. BGS): 12

DEPTH TO WATER (FT. BGS): 2.32 (4/17/17)

Hanks Pooling Unit #1  
Production Facility

BORING / WELL ID: BH13

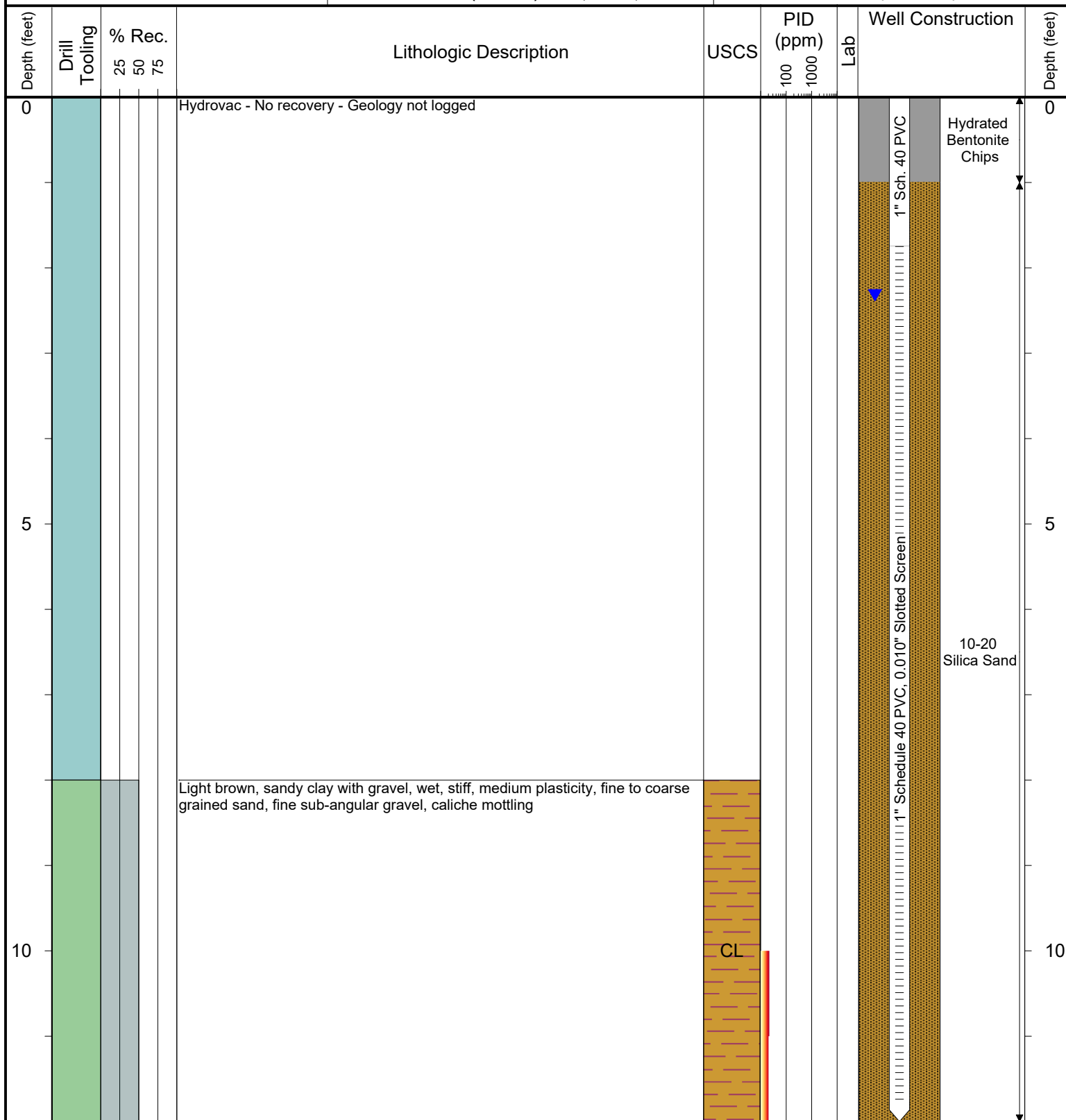
COMPLETION: Stick-up - 2.81'

LATITUDE (WGS 1984): 40.090710492

LONGITUDE (WGS 1984): -104.88207296

CASING ELEVATION (FT. AMSL): 4979.34

GROUND ELEVATION (FT. AMSL): 4976.53



Drilling / Sample Method:

- Macro-Core
- Hand Auger
- Expendable Well Tip
- Hydrovac

Laboratory Sample Types:

- Geotechnical Lab
- Analytical Chemistry Lab
- Geotechnical & Analytical Chemistry Lab



6899 Pecos Street, Unit C  
Denver, Colorado 80221

CLIENT: Kerr-McGee Oil & Gas Onshore LP

LOGGED BY: Eric Siegel, P.G.

PROJECT MANAGER: Robert Cornez

DRILLING CONTRACTOR: Tasman Geosciences, Inc.

DRILLING EQUIPMENT: AMS Powerprobe 9300-SK

DRILL BIT SIZE (INCHES): 2.375"

DATE STARTED - COMPLETED: 4/12/2017

TOTAL WELL DEPTH (FT. BGS): 12

DEPTH TO WATER (FT. BGS): 5.70 (4/17/17) ▼

Hanks Pooling Unit #1  
Production Facility

BORING / WELL ID: BH14

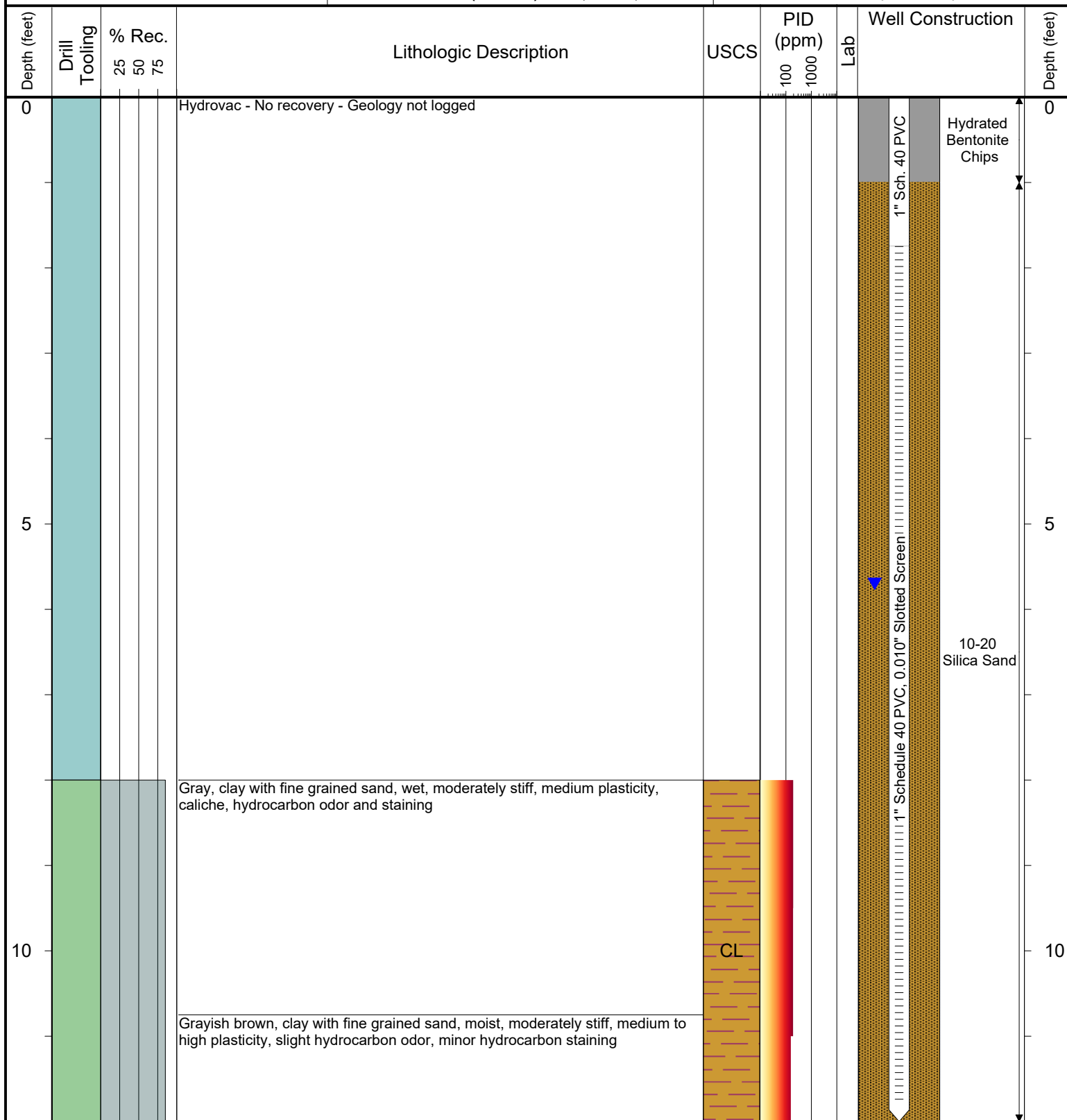
COMPLETION: Flush mount

LATITUDE (WGS 1984): 40.090184426

LONGITUDE (WGS 1984): -104.88193816

CASING ELEVATION (FT. AMSL): 4978.18

GROUND ELEVATION (FT. AMSL): 4978.68



Drilling / Sample Method:

Macro-Core

Expendable Well Tip

Hand Auger

Hydrovac

Laboratory Sample Types:

Geotechnical Lab

Analytical Chemistry Lab

Geotechnical & Analytical Chemistry Lab



6899 Pecos Street, Unit C  
Denver, Colorado 80221

CLIENT: Kerr-McGee Oil & Gas Onshore LP

LOGGED BY: Eric Siegel, P.G.

PROJECT MANAGER: Robert Cornez

DRILLING CONTRACTOR: Tasman Geosciences, Inc.

DRILLING EQUIPMENT: AMS Powerprobe 9300-SK

DRILL BIT SIZE (INCHES): 2.375"

DATE STARTED - COMPLETED: 4/12/2017

TOTAL WELL DEPTH (FT. BGS): 12

DEPTH TO WATER (FT. BGS): 4.32 (4/17/17) ▼

## Hanks Pooling Unit #1 Production Facility

BORING / WELL ID: BH15

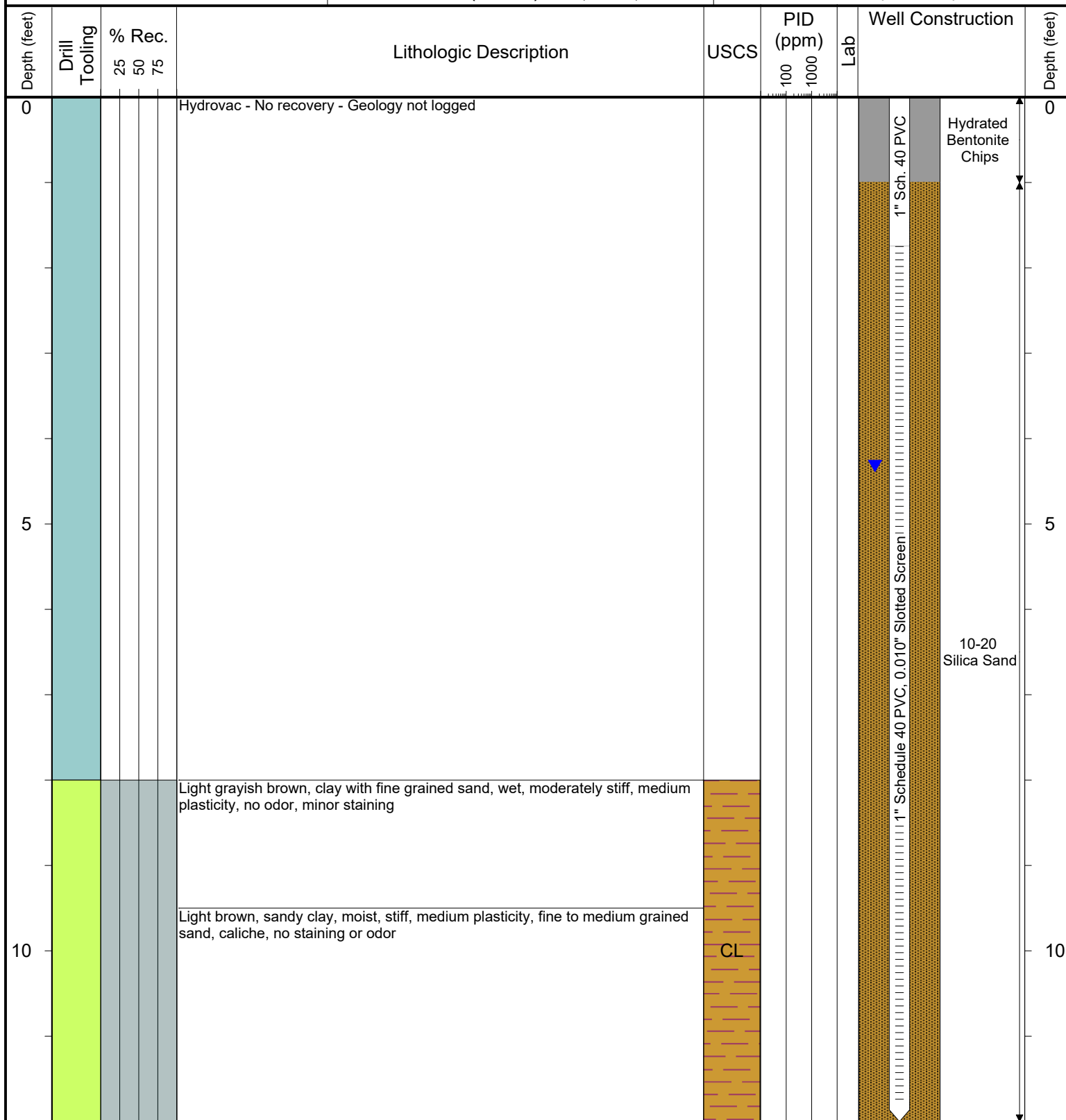
COMPLETION: Stick-up - 2.79'

LATITUDE (WGS 1984): 40.090198011

LONGITUDE (WGS 1984): -104.88164624

CASING ELEVATION (FT. AMSL): 4978.7

GROUND ELEVATION (FT. AMSL): 4975.91



### Drilling / Sample Method:

- Macro-Core
- Expendable Well Tip
- Hand Auger
- Hydrovac

### Laboratory Sample Types:

- Geotechnical Lab
- Analytical Chemistry Lab
- Geotechnical & Analytical Chemistry Lab



6899 Pecos Street, Unit C  
Denver, Colorado 80221

CLIENT: Kerr-McGee Oil & Gas Onshore LP

LOGGED BY: Eric Siegel, P.G.

PROJECT MANAGER: Robert Cornez

DRILLING CONTRACTOR: Tasman Geosciences, Inc.

DRILLING EQUIPMENT: AMS Powerprobe 9300-SK

DRILL BIT SIZE (INCHES): 2.375"

DATE STARTED - COMPLETED: 4/12/2017

TOTAL WELL DEPTH (FT. BGS): 11.5

DEPTH TO WATER (FT. BGS): 2.42 (4/17/17)

Hanks Pooling Unit #1  
Production Facility

BORING / WELL ID: BH16

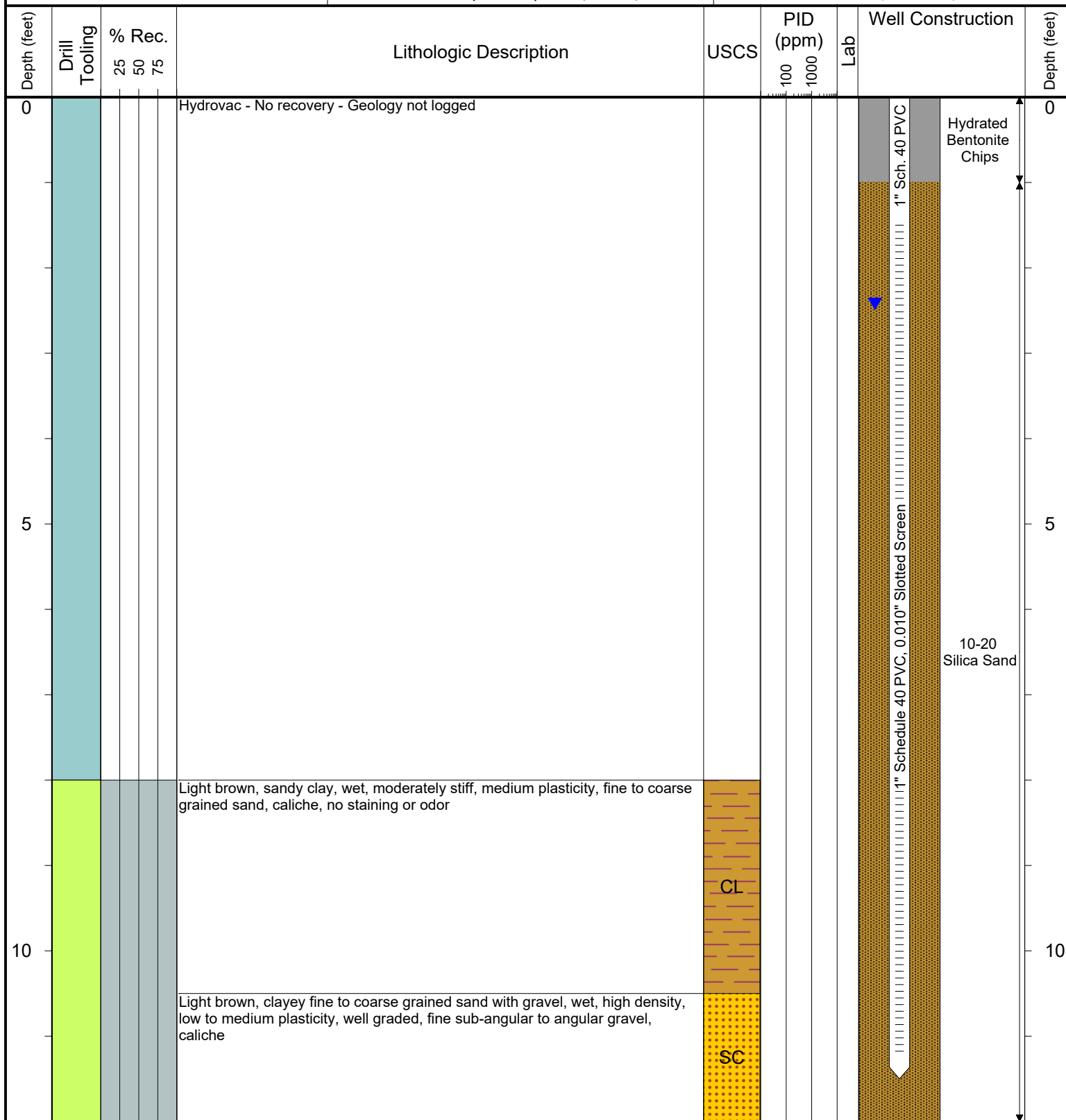
COMPLETION: Stick-up - 2.95'

LATITUDE (WGS 1984): 40.090579924

LONGITUDE (WGS 1984): -104.88169565

CASING ELEVATION (FT. AMSL): 4977.57

GROUND ELEVATION (FT. AMSL): 4974.62



Drilling / Sample Method:

- Macro-Core
- Expendable Well Tip
- Hand Auger
- Hydrovac

Laboratory Sample Types:

- Geotechnical Lab
- Analytical Chemistry Lab
- Geotechnical & Analytical Chemistry Lab





6899 Pecos Street, Unit C  
Denver, Colorado 80221

CLIENT: Kerr-McGee Oil & Gas Onshore LP

LOGGED BY: Eric Siegel, P.G.

PROJECT MANAGER: Robert Cornez

DRILLING CONTRACTOR: Tasman Geosciences, Inc.

DRILLING EQUIPMENT: AMS Powerprobe 9300-SK

DRILL BIT SIZE (INCHES): 2.375"

DATE STARTED - COMPLETED: 4/12/2017

TOTAL WELL DEPTH (FT. BGS): 12

DEPTH TO WATER (FT. BGS): 3.40 (4/17/17) ▼

Hanks Pooling Unit #1  
Production Facility

BORING / WELL ID: BH17

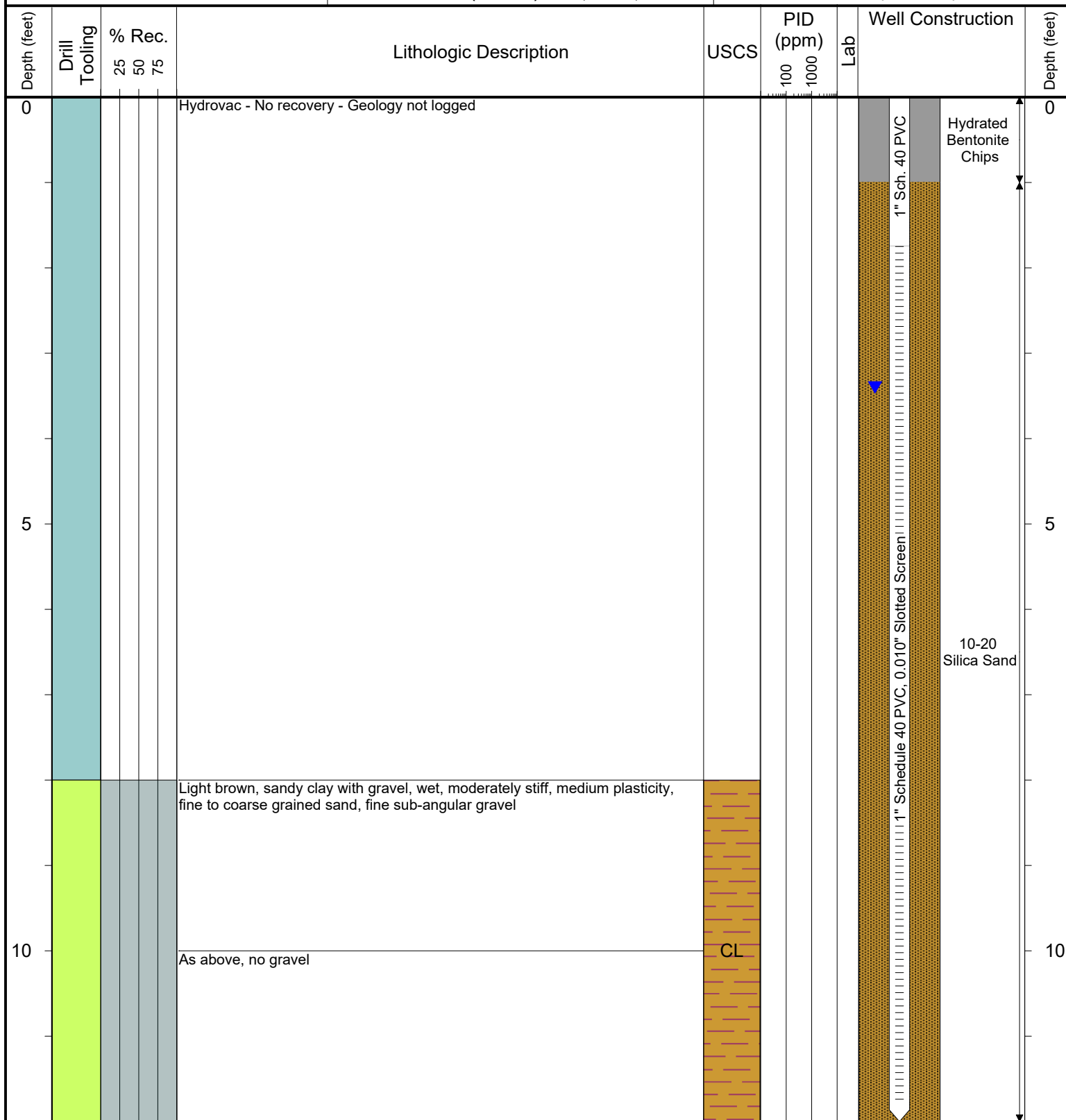
COMPLETION: Stick-up - 2.73'

LATITUDE (WGS 1984): 40.090729161

LONGITUDE (WGS 1984): -104.88182838

CASING ELEVATION (FT. AMSL): 4978.89

GROUND ELEVATION (FT. AMSL): 4976.16



Drilling / Sample Method:

Macro-Core

Expendable Well Tip

Hand Auger

Hydrovac

Laboratory Sample Types:

Geotechnical Lab

Analytical Chemistry Lab



Geotechnical & Analytical Chemistry Lab



6899 Pecos Street, Unit C  
Denver, Colorado 80221

CLIENT: Kerr-McGee Oil & Gas Onshore LP

LOGGED BY: Eric Siegel, P.G.

PROJECT MANAGER: Robert Cornez

DRILLING CONTRACTOR: Tasman Geosciences, Inc.

DRILLING EQUIPMENT: AMS Powerprobe 9300-SK

DRILL BIT SIZE (INCHES): 2.375"

DATE STARTED - COMPLETED: 11/30/2017

TOTAL WELL DEPTH (FT. BGS): 12

DEPTH TO WATER (FT. BGS): 5.34 (1/4/18) ▼

Hanks Pooling Unit #1  
Production Facility

BORING / WELL ID: BH18

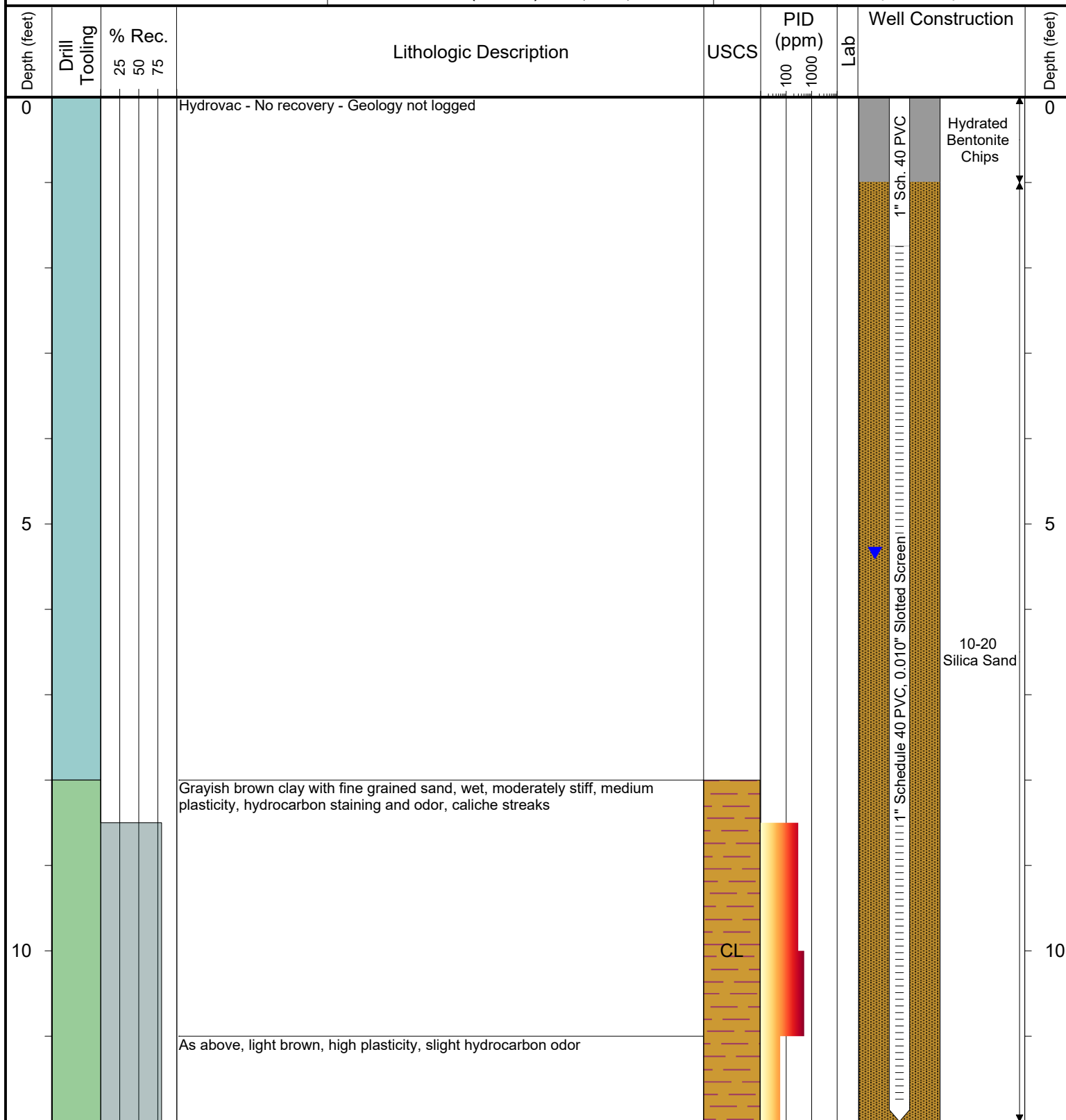
COMPLETION: Stick-up - 1.56'

LATITUDE (WGS 1984): 40.090102465

LONGITUDE (WGS 1984): -104.88177159

CASING ELEVATION (FT. AMSL): 4978.8

GROUND ELEVATION (FT. AMSL): 4977.24



Drilling / Sample Method:

- Macro-Core
- Expendable Well Tip
- Hand Auger
- Hydrovac

Laboratory Sample Types:

- Geotechnical Lab
- Analytical Chemistry Lab
- Geotechnical & Analytical Chemistry Lab



6899 Pecos Street, Unit C  
Denver, Colorado 80221

CLIENT: Kerr-McGee Oil & Gas Onshore LP

LOGGED BY: Eric Siegel, P.G.

PROJECT MANAGER: Robert Cornez

DRILLING CONTRACTOR: Tasman Geosciences, Inc.

DRILLING EQUIPMENT: AMS Powerprobe 9300-SK

DRILL BIT SIZE (INCHES): 2.375"

DATE STARTED - COMPLETED: 11/30/2017

TOTAL WELL DEPTH (FT. BGS): 12

DEPTH TO WATER (FT. BGS): 6.48 (1/4/18) ▼

Hanks Pooling Unit #1  
Production Facility

BORING / WELL ID: BH19

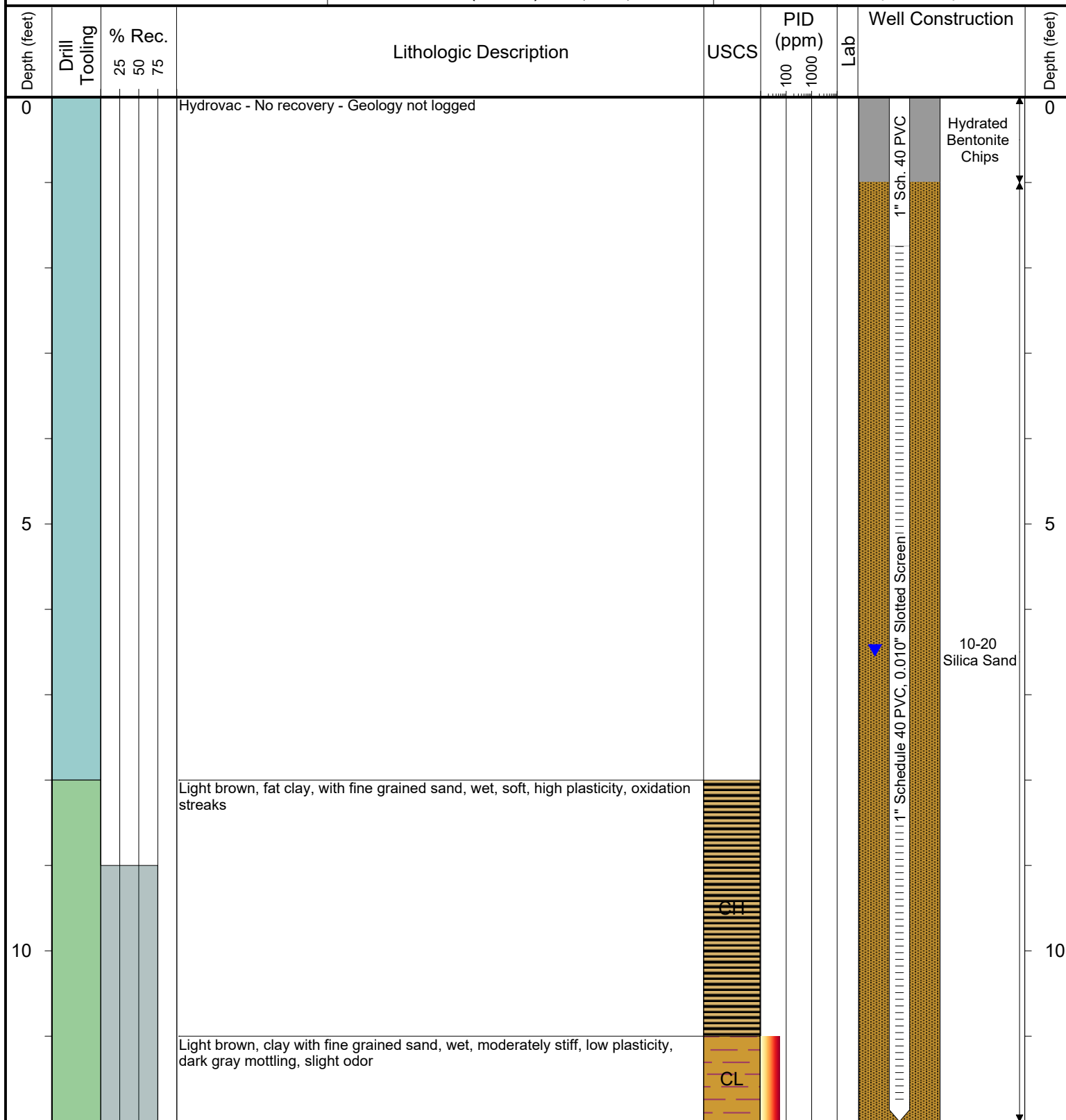
COMPLETION: Flush mount

LATITUDE (WGS 1984): 40.090115748

LONGITUDE (WGS 1984): -104.88210502

CASING ELEVATION (FT. AMSL): 4979.61

GROUND ELEVATION (FT. AMSL): 4979.85



Drilling / Sample Method:

Macro-Core

Expendable Well Tip

Hand Auger

Hydrovac

Laboratory Sample Types:

Geotechnical Lab

Analytical Chemistry Lab

Geotechnical & Analytical Chemistry Lab