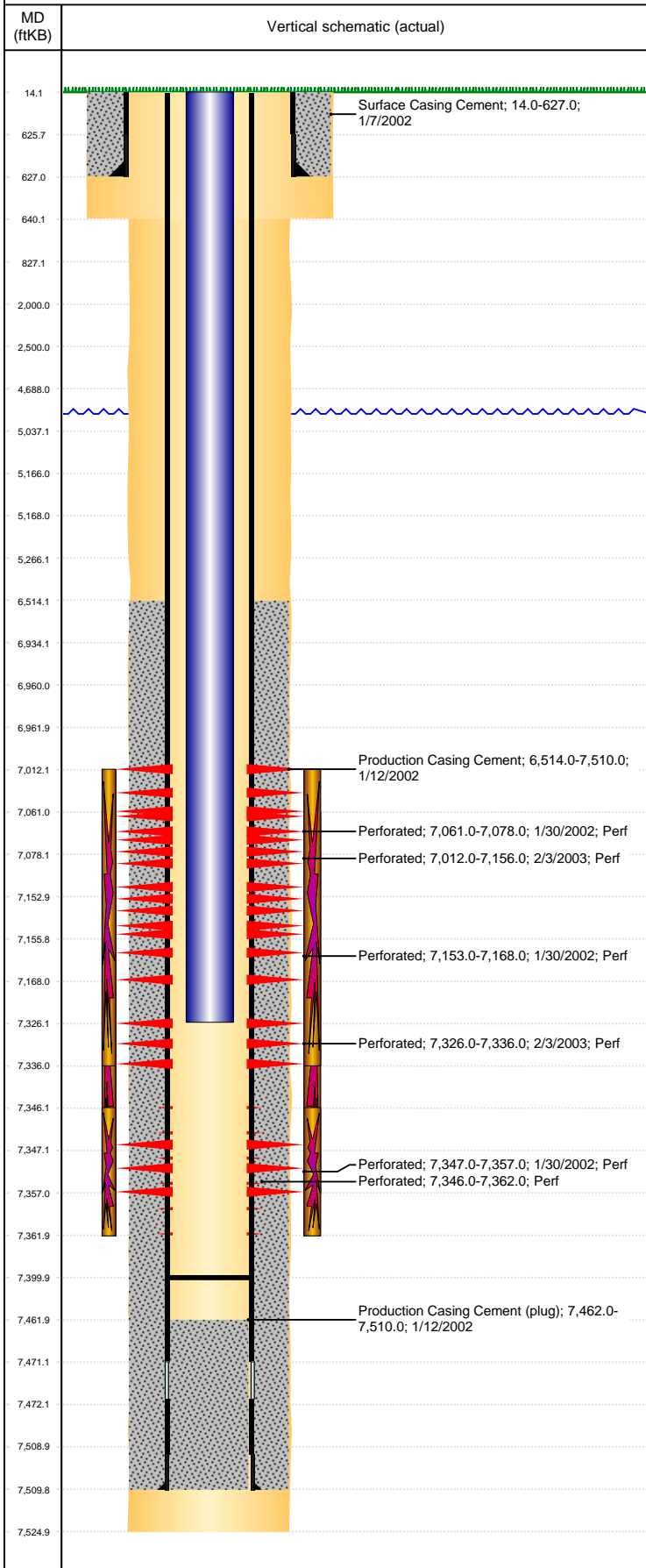


Well Name: CARLSON 10-29

VERTICAL, ORIGINAL HOLE, 5/30/2019 11:24:37 AM



Well Header									
API 05-123-20662		Business Unit DJ BASIN			District 15		Well Config VERTICAL		
KB - GL / MSL (ft... 14.00		Spud Date 1/6/2002		P & A Date		Well Production Status SI			SoRT No
Comment DRILLING & CEMENT REPORTS MISSING FROM WELL FILE, INFORMATION OFF STATE RECORDS & HISTORICAL SCHEMATICS									
Surface Location (Congressional)									
Qtr 3 NW	Qtr 4 SE	Section 29	Twnshp 5	Twnsh... N	Range 66	Rng E... W	Actual Latitude (°) 40.36843000	Actual Longitude (°) -104.80064000	
Wellbore Sections									
Section Des			Size (in)			Act Top, MD (ftKB)		Act Btm, MD (ftKB)	
SURFACE			12 1/4			14		640	
PRODUCTION			7 7/8			640		7,525	
Casing Strings									
Csg Des		Run Date		OD (in)	Wt/Len (lb/ft)	Grade	Top, MD (ftKB)	MD (ftKB)	
Surface		1/7/2002		8 5/8	24.00		14.0	627.0	
Production		1/12/2002		4 1/2	11.60	I-80	14.0	7,510.0	
Cement									
Des				Start Date		Top (ftKB)		Btm (ftKB)	
Surface Casing Cement				1/7/2002		14.0		627.0	
Production Casing Cement				1/12/2002		6,514.0		7,510.0	
Zone Statuses									
Zone Name	Status Date	Status	Fluid Type	Job				Prod Method	
NIOBRARA	3/1/2002	PR		DRILLING/COMPLETION - ORIGINAL, 1/6/2002...				Flowing	
NIOBRARA	1/23/2014	PR	Water						
CODELL	1/23/2014	PR	Water						
CODELL	3/22/2017	SI							
NIOBRARA-CO...	1/23/2014	PR	Water					Flowing	
Perforation Data									
Linked Zone		Bnch/Stg	Entered Shot Total	Top (ftKB)		Btm (ftKB)		Date	
NIOBRARA, ORIGINAL HOLE		A		7,012.00		7,156.00		2/3/2003	
NIOBRARA, ORIGINAL HOLE			4	7,061.00		7,078.00		1/30/2002	
NIOBRARA, ORIGINAL HOLE			4	7,153.00		7,168.00		1/30/2002	
CODELL, ORIGINAL HOLE				7,326.00		7,336.00		2/3/2003	
CODELL, ORIGINAL HOLE			64	7,346.00		7,362.00		1/30/2002	
CODELL, ORIGINAL HOLE		10	7,347.00		7,357.00				
Stimulation Intervals									
Zone			Start Date			Top (ftKB)		Btm (ftKB)	
			2/3/2003			7,012.0		7,336.0	
NIOBRARA-CODELL, ORIGINAL HOLE			1/30/2002			7,061.0		7,357.0	
CODELL, ORIGINAL HOLE			8/1/2006			7,346.0		7,362.0	
Other In Hole									
Run Date		Des				OD (in)	Top (ftKB)		Btm (ftKB)
Logs									
Date		Type				Top, MD (ftKB)		Btm, MD (ftKB)	
1/12/2002		COMPENSATED NEUTRON				3,900.0		7,502.0	
1/12/2002		INDUCTION				50.0		7,512.0	
1/30/2002		CEMENT BOND				6,345.0		7,457.0	
2/15/2002		SPECTAL GAMMA RAY				6,806.0		7,394.0	
7/25/2006		COLLAR LOCATOR				6,600.0		7,100.0	
5/30/2013		GYRO				10.0		7,200.0	
Plug Back Total Depths									
Date		Type		Com				Depth (ftKB)	
1/30/2002		FILL		DEPTH LOGGER ON CBL				7,462.0	
2/5/2002		FILL		CLEAN OUT				7,400.0	