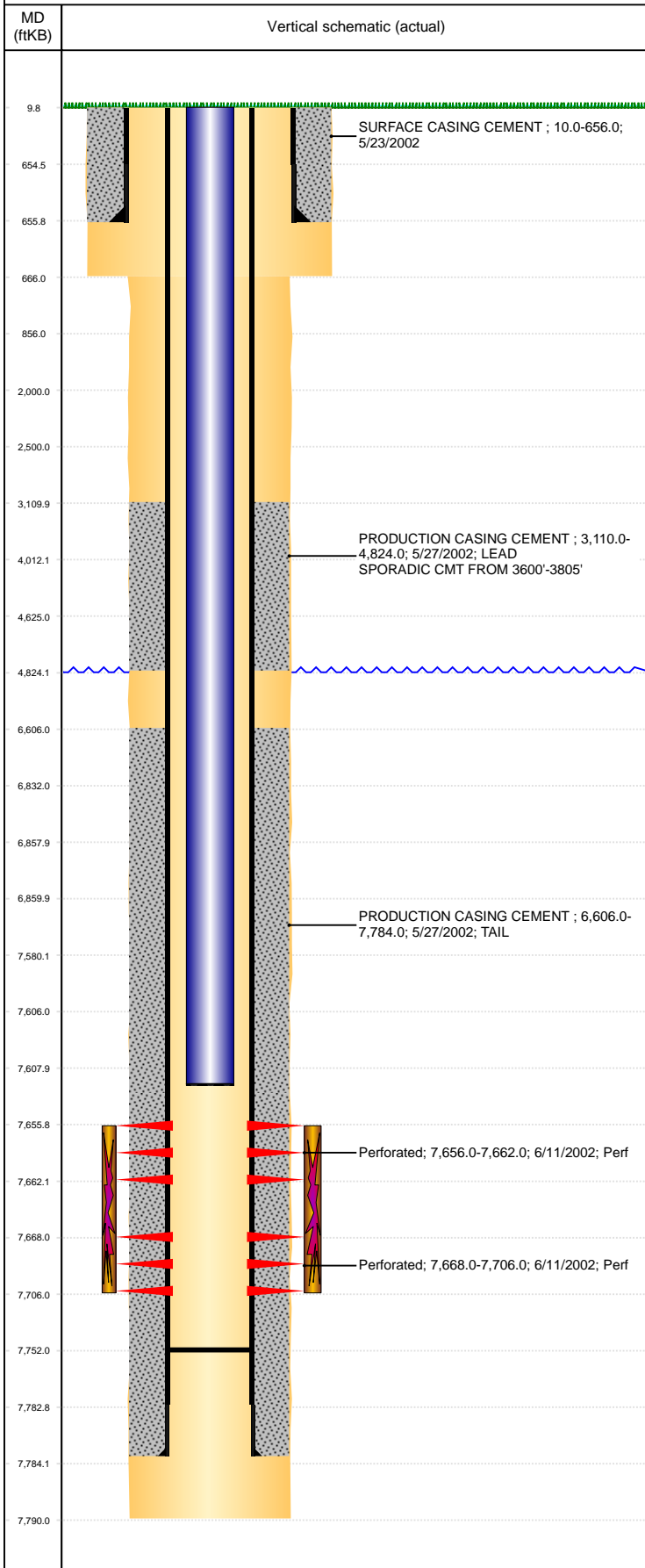


**Well Name: ALLISON H04-03JI**

VERTICAL, ORIGINAL HOLE, 5/29/2019 2:30:00 PM



Well Header									
API 05-123-20938		Business Unit DJ BASIN			District 15		Well Config VERTICAL		
KB - GL / MSL (ft... 10.00		Spud Date 5/22/2002		P & A Date		Well Production Status PR			SoRT No
Comment DISC. IN SPUD DATE. ST. HAS 5/23, DRL RPT HAS 5/22. LIMITED DATA IN FILE ON TBG INSTALL.									
Surface Location (Congressional)									
Qtr 3 NE	Qtr 4 NW	Section 4	Twonshp 3	Twonsh... N	Range 65	Rng E... W	Actual Latitude (°) 40.25979578	Actual Longitude (°) -104.67096249	
Wellbore Sections									
Section Des			Size (in)			Act Top, MD (ftKB)		Act Btm, MD (ftKB)	
SURFACE			12 1/4			10		666	
PRODUCTION			7 7/8			666		7,790	
Casing Strings									
Csg Des		Run Date		OD (in)	Wt/Len (lb/ft)	Grade	Top, MD (ftKB)	MD (ftKB)	
Surface		5/23/2002		8 5/8	24.00		10.0	656.0	
Production		5/27/2002		4 1/2	11.60	N-80	10.0	7,784.0	
Cement									
Des				Start Date		Top (ftKB)		Btm (ftKB)	
SURFACE CASING CEMENT				5/23/2002		10.0		656.0	
PRODUCTION CASING CEMENT				5/27/2002		3,110.0		4,824.0	
PRODUCTION CASING CEMENT				5/27/2002		6,606.0		7,784.0	
Zone Statuses									
Zone Name		Status Date	Status	Fluid Type	Job			Prod Method	
J SAND		6/19/2002	PR	Oil				Flowing	
J SAND		4/5/2010	PR	Water				Flowing	
Perforation Data									
Linked Zone		Bnch/Stg	Entered Shot Total	Top (ftKB)		Btm (ftKB)		Date	
J SAND, ORIGINAL HOLE			88	7,656.00		7,662.00		6/11/2002	
J SAND, ORIGINAL HOLE				7,668.00		7,706.00		6/11/2002	
Stimulation Intervals									
Zone				Start Date		Top (ftKB)		Btm (ftKB)	
J SAND, ORIGINAL HOLE				6/14/2002		7,656.0		7,706.0	
Other In Hole									
Run Date		Des				OD (in)	Top (ftKB)	Btm (ftKB)	
Logs									
Date		Type				Top, MD (ftKB)		Btm, MD (ftKB)	
5/26/2002		COMPENSATED DENSITY				4,300.0		7,769.0	
5/26/2002		INDUCTION				656.0		7,789.0	
6/10/2022		CBL/CCL/GR				2,900.0		7,748.0	
Plug Back Total Depths									
Date		Type		Com				Depth (ftKB)	
6/7/2002		FILL		CLEAN OUT				7,763.0	
6/10/2002		FILL		DEPTH LOGGER FROM CBL				7,752.0	