

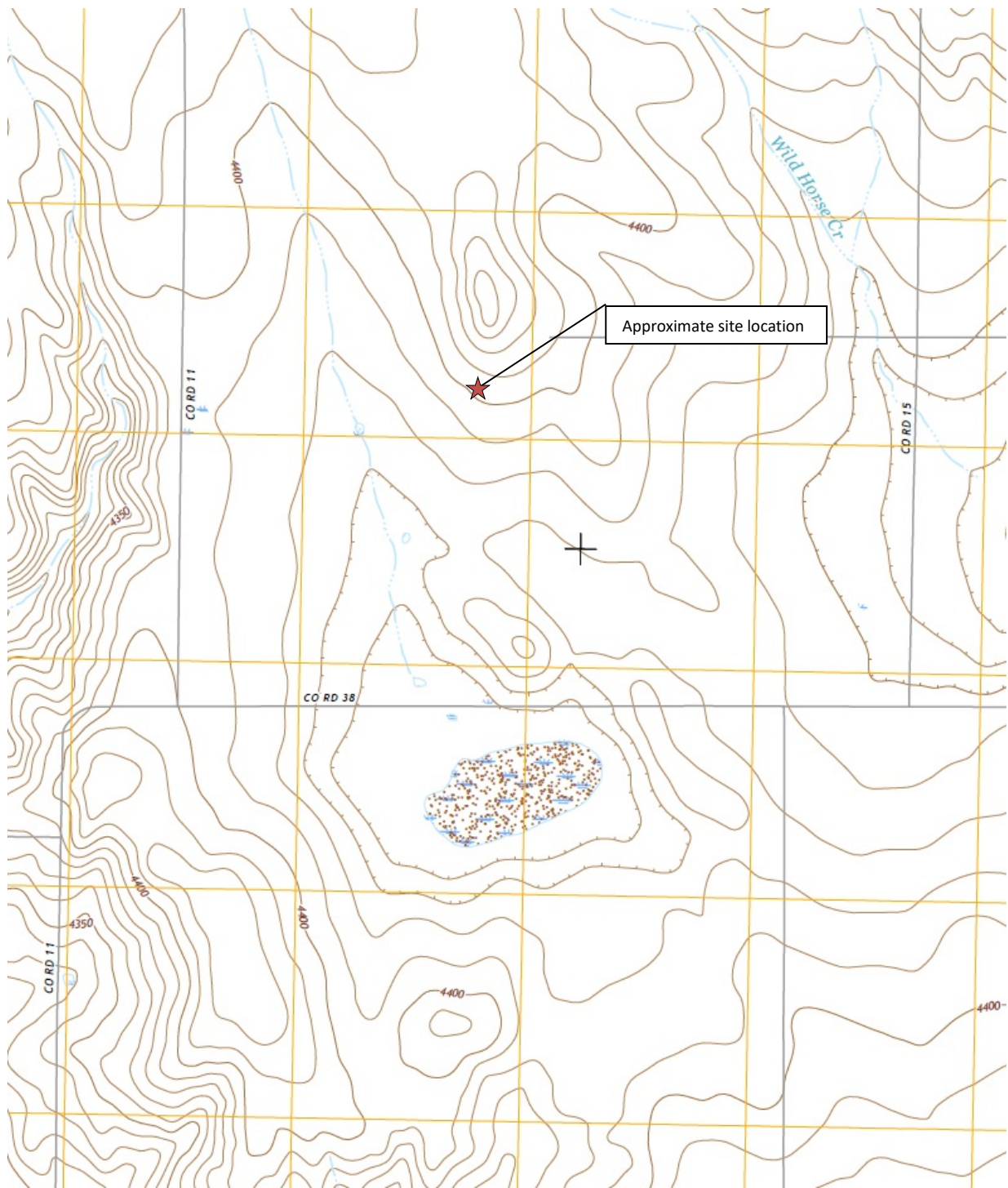


FIGURES

Figure 1: Topographic Site Location Map

Figure 2: Aerial Site Location Map

Figure 3: Proposed Assessment Map



Topographical Site Location Map

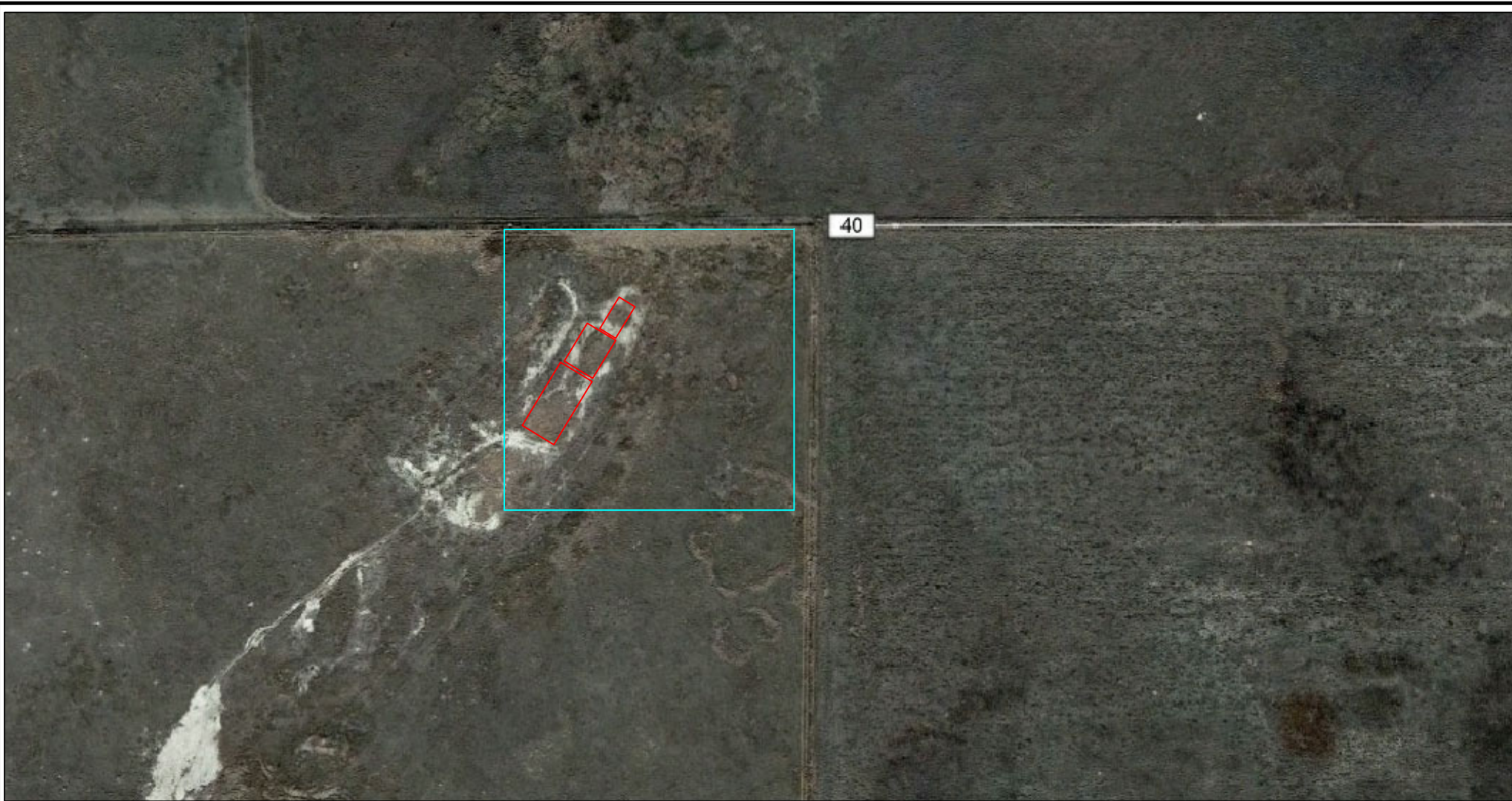
State #1-36
 Production Pit Closure
 40.714817 / -103.46263
 NE¼ NE¼ SEC.36 T9N R55W 6PM
 Logan County, Colorado
 Facility ID 116333



EAGLE
 ENVIRONMENTAL
 CONSULTING, INC.

Source: USGS 7.5 Minute Topographic
 Map, Wild Horse Lake, CO Quadrangle
 2016

Figure 1



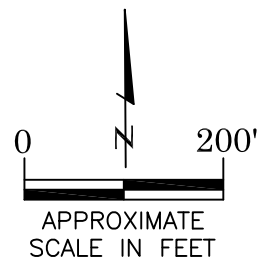
LEGEND



APPROXIMATE DECOMMISSIONED STATE #1-36 FACILITY LOCATION



APPROXIMATE LOCATIONS OF PREVIOUS EARTHERN PRODUCTION PITS
(3) (FACILITY ID 116333)



AERIAL SITE LOCATION MAP

STATE #1-36
PRODUCTION PIT CLOSURE
40.714817 / -103.46263
NE1/4 NE1/4 SEC.36 T9N R55W 6PM
LOGAN COUNTY, COLORADO
FACILITY 116333
REMEDATION # 6103

DATE:
05/29/19

FIG. NO.
2

DRAWN BY:
amn



EAGLE
ENVIRONMENTAL
CONSULTING, INC.
4101 INCA STREET, DENVER, CO 80211
Ph: 303-433-0479 • F: 303-325-5449



NOTE: ALL FACILITIES HAVE BEEN REMOVED. PROPOSED ASSESSMENT LOCATIONS
BASED ON HISTORICAL AERIAL PHOTOGRAPHY (GOOGLE EARTH) & NOTES
PROVIDED TO EAGLE ENVIRONMENTAL CONSULTING, INC.

LEGEND

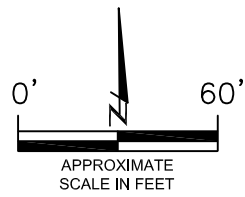
----- HISTORICAL EARTHEN PRODUCTION PIT LOCATIONS

PIT #1 (40.716375 / -103.461063)

PIT #2 (40.716230 / -103.461172)

PIT #3 (40.716054 / -103.461320)

● PROPOSED SOIL ASSESSMENT LOCATIONS



APPROXIMATE
SCALE IN FEET

PROPOSED ASSESSMENT MAP -- REVISED 04/05/19

STATE #1-36
PRODUCTION PIT CLOSURE
40.714817 / -103.46263
NE1/4 NE1/4 SEC.36 T9N R55W 6PM
LOGAN COUNTY, COLORADO
FACILITY ID 116333
REMEDIAL # 6103

DATE:
04/05/19

DRAWN BY:
amn

FIG.
NO. 1



EAGLE
ENVIRONMENTAL
CONSULTING, INC.
4101 INCA STREET, DENVER, CO 80211
Ph: 303-433-0479 • F: 303-435-5449