

FREMONT ENVIRONMENTAL INC.

February 8, 2019

Mr. Jacob Evans
Noble Energy Inc.
2115 117th Avenue
Greeley, CO 80634

Subject: **Ground Water Data Submittal**
 Libsack R G27-15
 SWSE Sec 27, T4N, R65W
 API # 05-123-13256
 Weld County, Colorado
 Fremont Project No. C013-009
 Facility ID# 323601, Remediation #7871

Dear Mr. Evans:

Enclosed please find a copy of the above referenced Ground Water Data Submittal for the Libsack R G27-15 site in Weld County, Colorado. The enclosed report describes monitoring and sampling efforts to assess ground water quality at the site.

Please contact me at (303) 956-8714 if you require any additional information.

Fremont appreciates the opportunity to provide this service.

Sincerely,
FREMONT ENVIRONMENTAL INC.



Paul V. Henehan, P.E.
Senior Consultant

Enclosure

TABLE 1
SUMMARY OF GROUND WATER ELEVATION DATA AND CHEMISTRY DATA
NOBLE ENERGY INC.
LIBSACK R G27-15, WELD COUNTY, COLORADO
FREMONT PROJECT NO. C013-009

SAMPLE LOCATION	DATE	BENZENE (µg/L)	TOLUENE (µg/L)	ETHYL BENZENE (µg/L)	TOTAL XYLENES (µg/L)	TOC ELEVATION (feet)	DEPTH TO GROUND WATER (ft)	GROUND WATER ELEVATION (ft)	FREE PRODUCT THICKNESS (ft)
MW-1	06/14/13	<1.0	<1.0	<1.0	<1.0	99.89	2.93	96.96	NP
	06/24/13	NS	NS	NS	NS		2.66	97.23	NP
	07/09/13	NS	NS	NS	NS		2.53	97.36	NP
	07/19/13	NS	NS	NS	NS		Inundated	Inundated	Inundated
	10/18/13	<1	<1	<1	<1		1.66	98.23	NP
	01/13/14	<1	<1	<1	<1		2.25	97.64	NP
	04/02/14	<1	<1	<1	<1		2.74	97.15	NP
	07/15/14	<1.0	<1.0	<1.0	<1.0		2.52	97.37	NP
	10/07/14	<1.0	<1.0	<1.0	<1.0		1.86	98.03	NP
	01/20/15	<1.0	<1.0	<1.0	<1.0		1.87	98.02	NP
	04/20/15	<1.0	<1.0	<1.0	<1.0		2.11	97.78	NP
MW-2	06/14/13	<1.0	<1.0	<1.0	<1.0	100.00	3.01	96.99	NP
	06/24/13	NS	NS	NS	NS		2.75	97.25	NP
	07/09/13	NS	NS	NS	NS		2.62	97.38	NP
	07/19/13	NS	NS	NS	NS		1.95	98.05	NP
	10/18/13	<1	<1	<1	<1		1.75	98.25	NP
	01/13/14	<1	<1	<1	<1		2.36	97.64	NP
	04/02/14	<1	<1	<1	<1		2.82	97.18	NP
	07/15/14	<1.0	<1.0	<1.0	<1.0		2.61	97.39	NP
	10/07/14	<1.0	<1.0	<1.0	<1.0		1.97	98.03	NP
	01/20/15	<1.0	<1.0	<1.0	<1.0		1.97	98.03	NP
	04/20/15	<1.0	<1.0	<1.0	<1.0		2.20	97.80	NP
MW-3	06/14/13	<1.0	<1.0	<1.0	<1.0	99.92	3.05	96.87	NP
	06/24/13	NS	NS	NS	NS		2.78	97.14	NP
	07/09/13	NS	NS	NS	NS		2.65	97.27	NP
	07/19/13	NS	NS	NS	NS		2.02	97.90	NP
	10/18/13	1.3	<1	<1	<1		1.88	98.04	NP
	01/13/14	<1	<1	<1	<1		2.40	97.52	NP
	04/02/14	<1	<1	<1	<1		2.84	97.08	NP
	07/15/14	<1.0	<1.0	<1.0	<1.0		2.66	97.26	NP
	10/07/14	<1.0	<1.0	<1.0	<1.0		2.02	97.90	NP
	01/20/15	<1.0	<1.0	<1.0	<1.0		2.04	97.88	NP
	04/20/15	<1.0	<1.0	<1.0	<1.0		2.27	97.65	NP
MW-4	06/14/13	4,523	<1.0	<1.0	168	99.47	2.69	96.78	NP
	06/24/13	NS	NS	NS	NS		2.42	97.05	NP
	07/09/13	868	<1.0	<1.0	<1.0		2.28	97.19	NP
	07/19/13	NS	NS	NS	NS		1.61	97.86	NP
	10/18/13	<1	<1	<1	<1		1.46	98.01	NP
	01/13/14	<1	<1	<1	<1		2.07	97.40	NP
	04/02/14	33.1	<1	<1	<1		2.55	96.92	NP

SAMPLE LOCATION	DATE	BENZENE (µg/L)	TOLUENE (µg/L)	ETHYL BENZENE (µg/L)	TOTAL XYLENES (µg/L)	TOC ELEVATION (feet)	DEPTH TO GROUND WATER (ft)	GROUND WATER ELEVATION (ft)	FREE PRODUCT THICKNESS (ft)
MW-4	07/15/14	6.4	<1.0	<1.0	<1.0	99.47	2.31	97.16	NP
	10/07/14	<1.0	<1.0	<1.0	<1.0		1.68	97.79	NP
	01/20/15	<1.0	<1.0	<1.0	<1.0		1.71	97.76	NP
	04/20/15	1.6	<1.0	<1.0	<1.0		1.94	97.53	NP
MW-5	06/14/13	494	<1.0	1.8	15.7	99.29	2.68	96.61	NP
	06/24/13	NS	NS	NS	NS		2.39	96.90	NP
	07/09/13	535	<1.0	<1.0	<1.0		2.26	97.03	NP
	07/19/13	NS	NS	NS	NS		Inundated	Inundated	Inundated
	10/18/13	<1	<1	<1	<1		1.31	97.98	NP
	01/13/14	<1	<1	<1	<1		2.01	97.28	NP
	04/02/14	<1	<1	<1	<1		2.49	96.80	NP
	07/15/14	<1.0	<1.0	<1.0	<1.0		2.26	97.03	NP
	10/07/14	<1.0	<1.0	<1.0	<1.0		1.65	97.64	NP
	01/20/15	<1.0	<1.0	<1.0	<1.0		1.66	97.63	NP
	04/20/15	<1.0	<1.0	<1.0	<1.0		1.89	97.40	NP
MW-6	06/14/13	<1.0	<1.0	<1.0	<1.0	99.66	3.01	96.65	NP
	06/24/13	NS	NS	NS	NS		2.74	96.92	NP
	07/09/13	NS	NS	NS	NS		2.61	97.05	NP
	07/19/13	NS	NS	NS	NS		2.01	97.65	NP
	10/18/13	<1	<1	<1	<1		1.79	97.87	NP
	01/13/14	2.9	<1	<1	<1		1.33	98.33	NP
	04/02/14	258	<1	<1	<1		2.82	96.84	NP
	07/15/14	<1.0	<1.0	<1.0	<1.0		2.61	97.05	NP
	10/07/14	<1.0	<1.0	<1.0	<1.0		1.98	97.68	NP
	01/20/15	<1.0	<1.0	<1.0	<1.0		1.99	97.67	NP
	04/20/15	<1.0	<1.0	<1.0	<1.0		2.23	97.43	NP
	07/20/15	<1.0	<1.0	<1.0	<1.0		2.38	97.28	NP
	10/28/15	<1.0	<1.0	<1.0	<1.0		1.86	97.80	NP
	01/29/16	<1.0	<1.0	<1.0	<1.0		3.07	96.59	NP
	04/28/16	<1.0	<1.0	<1.0	<1.0		1.81	97.85	NP
	07/26/16	<1.0	<1.0	<1.0	<1.0		2.74	96.92	NP
	10/18/16	<1.0	<1.0	<1.0	<1.0		1.93	97.73	NP
	01/06/17	<1.0	<1.0	<1.0	<1.0		3.01	96.65	NP
	04/05/17	<1.0	<1.0	<1.0	<1.0		3.39	96.27	NP
	07/25/17	<1.0	<1.0	<1.0	2.0		3.25	96.41	NP
10/12/17	<1.0	<1.0	<1.0	<1.0	1.78	97.88	NP		
01/25/18	<1.0	2.0	1.3	6.8	2.36	97.30	NP		
04/06/18	<1.0	<1.0	<1.0	<2.0	2.69	96.97	NP		
07/09/18	<1.0	<1.0	<1.0	<2.0	2.87	96.79	NP		
10/12/18	<1.0	<1.0	<1.0	<2.0	2.78	96.88	NP		
01/29/19	<1.0	<1.0	<1.0	<2.0	2.66	97.00	NP		
MW-7	06/14/13	1,063	27.8	<1.0	104	99.38	2.72	96.66	NP
	06/24/13	NS	NS	NS	NS		2.43	96.95	NP
	07/09/13	2,226	100	58.9	164		2.3	97.08	NP
	07/19/13	NS	NS	NS	NS		1.76	97.62	NP
	10/18/13	108	<1	3.9	1.9		1.44	97.94	NP
	01/13/14	<1	<1	<1	<1		2.02	97.36	NP

SAMPLE LOCATION	DATE	BENZENE (µg/L)	TOLUENE (µg/L)	ETHYL BENZENE (µg/L)	TOTAL XYLENES (µg/L)	TOC ELEVATION (feet)	DEPTH TO GROUND WATER (ft)	GROUND WATER ELEVATION (ft)	FREE PRODUCT THICKNESS (ft)
MW-7	04/02/14	<1	<1	<1	<1	99.38	2.47	96.91	NP
	07/15/14	<1.0	<1.0	<1.0	<1.0		2.28	97.10	NP
	10/07/14	<1.0	<1.0	<1.0	<1.0		1.63	97.75	NP
	01/20/15	<1.0	<1.0	<1.0	<1.0		1.64	97.74	NP
	04/20/15	NF	NF	NF	NF		NF	NF	NF
	07/20/15	<1.0	<1.0	<1.0	<1.0		1.19	98.19	NP
	10/28/15	<1.0	<1.0	<1.0	<1.0		0.67	98.71	NP
	01/29/16	Damaged	Damaged	Damaged	Damaged		Damaged	Damaged	Damaged
	03/17/16	<1.0	<1.0	<1.0	<1.0		NM	NM	NP
	04/28/16	<1.0	<1.0	<1.0	<1.0		too shallow	too shallow	NP
	07/26/16	<1.0	<1.0	<1.0	<1.0		1.80	97.58	NP
	10/18/16	<1.0	<1.0	<1.0	<1.0		0.98	98.40	NP
	01/06/17	<1.0	<1.0	<1.0	<1.0		2.07	97.31	NP
	04/05/17	<1.0	<1.0	<1.0	<1.0		2.46	96.92	NP
	07/25/17	<1.0	<1.0	<1.0	<1.0		2.34	97.04	NP
	10/12/17	<1.0	<1.0	<1.0	<1.0		0.87	99.66	NP
	01/25/18	<1.0	<1.0	<1.0	<2.0		1.90	97.48	NP
	04/06/18	<1.0	<1.0	<1.0	<2.0		2.23	97.15	NP
	07/09/18	<1.0	<1.0	<1.0	<2.0		2.41	96.97	NP
	10/12/18	<1.0	<1.0	<1.0	<2.0		2.33	97.05	NP
01/29/19	<1.0	<1.0	<1.0	<2.0		2.20	97.18	NP	
MW-8	06/14/13	<1.0	<1.0	<1.0	<1.0	99.46	2.69	96.77	NP
	06/24/13	NS	NS	NS	NS		2.39	97.07	NP
	07/09/13	NS	NS	NS	NS		2.27	97.19	NP
	07/19/13	NS	NS	NS	NS		Inundated	Inundated	Inundated
	10/18/13	<1	<1	<1	<1		1.79	97.67	NP
	01/13/14	<1	<1	<1	<1		2.08	97.38	NP
	04/02/14	<1	<1	<1	<1		2.46	97.00	NP
	07/15/14	<1.0	<1.0	<1.0	<1.0		2.25	97.21	NP
	10/07/14	<1.0	<1.0	<1.0	<1.0		1.69	97.77	NP
	01/20/15	<1.0	<1.0	<1.0	<1.0		1.71	97.75	NP
	04/20/15	<1.0	<1.0	<1.0	<1.0		1.93	97.53	NP
	MW-9	06/14/13	<1.0	<1.0	<1.0	<1.0	99.51	3.05	96.46
06/24/13		NS	NS	NS	NS	99.03	2.25	96.78	NP
07/09/13		NS	NS	NS	NS		2.14	96.89	NP
07/19/13		NS	NS	NS	NS		1.18	97.85	NP
10/18/13		<1	<1	<1	<1		1.28	97.75	NP
01/13/14		<1	<1	<1	<1		1.82	97.69	NP
04/02/14		<1	<1	<1	<1		2.31	96.72	NP
07/15/14		<1.0	<1.0	<1.0	<1.0		2.11	97.40	NP
10/07/14		<1.0	<1.0	<1.0	<1.0		1.44	98.07	NP
01/20/15		<1.0	<1.0	<1.0	<1.0		1.46	97.57	NP
04/20/15		<1.0	<1.0	<1.0	<1.0		1.69	97.34	NP
MW-10	06/14/13	<1.0	<1.0	<1.0	<1.0	100.01	3.61	96.40	NP
	06/24/13	NS	NS	NS	NS	99.44	2.7	96.74	NP
	07/09/13	NS	NS	NS	NS		2.59	96.85	NP
	07/19/13	NS	NS	NS	NS		1.89	97.55	NP

SAMPLE LOCATION	DATE	BENZENE (µg/L)	TOLUENE (µg/L)	ETHYL BENZENE (µg/L)	TOTAL XYLENES (µg/L)	TOC ELEVATION (feet)	DEPTH TO GROUND WATER (ft)	GROUND WATER ELEVATION (ft)	FREE PRODUCT THICKNESS (ft)
MW-10	10/18/13	<1	<1	<1	<1	99.44	1.73	97.71	NP
	01/13/14	<1	<1	<1	<1		2.29	97.72	NP
	04/02/14	<1	<1	<1	<1		2.76	96.68	NP
	07/15/14	<1.0	<1.0	<1.0	<1.0		2.54	97.47	NP
	10/07/14	<1.0	<1.0	<1.0	<1.0		1.91	98.10	NP
	01/20/15	<1.0	<1.0	<1.0	<1.0		1.92	97.52	NP
	04/20/15	<1.0	<1.0	<1.0	<1.0		2.16	97.28	NP
MW-11	06/14/13	<1.0	<1.0	<1.0	<1.0	100.50	4.1	96.40	NP
	06/24/13	NS	NS	NS	NS	99.98	3.23	96.75	NP
	07/09/13	NS	NS	NS	NS		3.12	96.86	NP
	07/19/13	NS	NS	NS	NS		2.48	97.50	NP
	10/18/13	<1	<1	<1	<1		2.24	97.74	NP
	01/13/14	<1	<1	<1	<1		2.82	97.68	NP
	04/02/14	<1	<1	<1	<1		3.31	96.67	NP
	07/15/14	<1.0	<1.0	<1.0	<1.0		3.42	97.08	NP
	10/07/14	<1.0	<1.0	<1.0	<1.0		2.43	98.07	NP
	01/20/15	<1.0	<1.0	<1.0	<1.0		2.44	97.54	NP
	04/20/15	<1.0	<1.0	<1.0	<1.0		2.67	97.31	NP
MW-12	07/09/13	<1.0	<1.0	<1.0	<1.0	99.68	2.62	97.06	NP
	07/19/13	NS	NS	NS	NS		2.14	97.54	NP
	10/18/13	<1	<1	<1	<1		1.74	97.94	NP
	01/13/14	<1	<1	<1	<1		2.32	97.36	NP
	04/02/14	<1	<1	<1	<1		2.81	96.87	NP
	07/15/14	WD	WD	WD	WD		WD	WD	WD
	01/20/15	<1.0	<1.0	<1.0	<1.0		WD	WD	NP
	04/20/15	NF	NF	NF	NF		NF	NF	NF
MW-13	07/09/13	71.1		160	2,606	99.76	2.78	96.98	NP
	07/19/13	NS	NS	NS	NS		2.28	97.48	NP
	10/18/13	131	<1	9.4	200		1.93	97.83	NP
	01/13/14	112	<1	91.7	4.3		2.51	97.25	NP
	04/02/14	75.5	1.7	47.9	125		3.07	96.69	NP
	07/15/14	71.2	<1.0	31.4	168		2.84	96.92	NP
	10/07/14	96.9	<1.0	56.6	2.1		1.19	98.57	NP
	01/20/15	100	<1.0	129	13.5		1.20	98.56	NP
	04/20/15	130	<1.0	92	<1.0		1.44	98.32	NP
	07/20/15	70	<1.0	7.2	<1.0		2.58	97.18	NP
	10/28/15	30	<1.0	2.4	<1.0		2.06	97.70	NP
	01/29/16	63	<1.0	22	<1.0		3.28	96.48	NP
	04/28/16	34	<1.0	7.2	<1.0		2.02	97.74	NP
	07/26/16	13	<1.0	<1.0	<1.0		2.95	96.81	NP
	10/18/16	18	<1.0	1.5	<1.0		2.14	97.62	NP
	01/06/17	46	<1.0	9.1	<1.0		3.22	96.54	NP
	04/05/17	25	<1.0	1.0	<1.0		3.62	96.14	NP
07/25/17	<1.0	<1.0	<1.0	<1.0		3.51	96.25	NP	
10/12/17	<1.0	<1.0	<1.0	<1.0		2.04	99.66	NP	
01/25/18	<1.0	<1.0	1.1	<2.0		2.51	97.25	NP	

SAMPLE LOCATION	DATE	BENZENE (µg/L)	TOLUENE (µg/L)	ETHYL BENZENE (µg/L)	TOTAL XYLENES (µg/L)	TOC ELEVATION (feet)	DEPTH TO GROUND WATER (ft)	GROUND WATER ELEVATION (ft)	FREE PRODUCT THICKNESS (ft)
MW-13	04/06/18	<1.0	<1.0	<1.0	<2.0	99.76	2.79	96.97	NP
	07/09/18	<1.0	<1.0	<1.0	<2.0		2.97	96.79	NP
	10/12/18	1.8	<1.0	<1.0	<2.0		2.90	96.86	NP
	01/29/19	<1.0	<1.0	<1.0	<2.0		2.73	97.03	NP
MW-14	07/09/13	9.2		1.6	16.8	99.42	2.5	96.92	NP
	07/19/13	NS	NS	NS	NS		1.96	97.46	NP
	10/18/13	10.6	<1	<1	<1		1.63	97.79	NP
	01/13/14	1.2	<1	<1	<1		2.28	97.14	NP
	04/02/14	2	<1	<1	4		2.78	96.64	NP
	07/15/14	1.6	<1.0	<1.0	1.5		2.58	96.84	NP
	10/07/14	<1.0	<1.0	<1.0	<1.0		1.92	97.50	NP
	01/20/15	<1.0	<1.0	<1.0	<1.0		1.94	97.48	NP
	04/20/15	<1.0	<1.0	<1.0	<1.0		2.17	97.25	NP
	07/20/15	<1.0	<1.0	<1.0	<1.0		2.41	97.01	NP
	10/28/15	<1.0	<1.0	<1.0	<1.0		1.89	97.53	NP
	01/29/16	<1.0	<1.0	<1.0	<1.0		3.11	96.31	NP
	04/28/16	<1.0	<1.0	<1.0	<1.0		1.85	97.57	NP
	07/26/16	<1.0	<1.0	<1.0	<1.0		2.78	96.64	NP
	10/18/16	<1.0	<1.0	<1.0	<1.0		1.97	97.45	NP
	01/06/17	<1.0	<1.0	<1.0	<1.0		3.05	96.37	NP
	04/05/17	<1.0	<1.0	<1.0	<1.0		3.43	95.99	NP
	07/25/17	<1.0	<1.0	<1.0	<1.0		3.24	96.18	NP
10/12/17	<1.0	<1.0	<1.0	<1.0		1.77	99.66	NP	
01/25/18	<1.0	<1.0	<1.0	<2.0		2.38	97.04	NP	
04/06/18	<1.0	<1.0	<1.0	<2.0		2.72	96.70	NP	
07/09/18	<1.0	<1.0	<1.0	<2.0		2.92	96.50	NP	
10/12/18	<1.0	<1.0	<1.0	<2.0		2.80	96.62	NP	
01/29/19	<1.0	<1.0	<1.0	<2.0		2.79	96.63	NP	
MW-15	07/09/13	<1.0	<1.0	<1.0	<1.0	99.59	2.68	96.91	NP
	07/19/13	NS	NS	NS	NS		2.12	97.47	NP
	10/18/13	<1	<1	<1	<1		1.82	97.77	NP
	01/13/14	<1	<1	<1	<1		2.39	97.20	NP
	04/02/14	<1	<1	<1	<1		2.88	96.71	NP
	07/15/14	<1.0	<1.0	<1.0	<1.0		2.65	96.94	NP
	10/07/14	<1.0	<1.0	<1.0	<1.0		2.01	97.58	NP
	01/20/15	<1.0	<1.0	<1.0	<1.0		2.03	97.56	NP
04/20/15	<1.0	<1.0	<1.0	<1.0		2.26	97.33	NP	
MW-16	07/09/13	177		394	5,089	99.18	2.3	96.88	NP
	07/19/13	NS	NS	NS	NS		1.74	97.44	NP
	10/18/13	166	<1	104	405		1.41	97.77	NP
	01/13/14	249	<1	268	1733		2.02	97.16	NP
	04/02/14	149	3.1	127	852		2.49	96.69	NP
	07/15/14	<1.0	<1.0	<1.0	<1.0		2.29	96.89	NP
	10/07/14	<1.0	<1.0	<1.0	<1.0		1.61	97.57	NP
	01/20/15	<1.0	<1.0	<1.0	<1.0		1.62	97.56	NP
	04/20/15	<1.0	<1.0	<1.0	<1.0		1.85	97.33	NP
	07/20/15	<1.0	<1.0	<1.0	<1.0		2.06	97.12	NP
10/28/15	<1.0	<1.0	<1.0	<1.0		1.53	97.65	NP	

SAMPLE LOCATION	DATE	BENZENE (µg/L)	TOLUENE (µg/L)	ETHYL BENZENE (µg/L)	TOTAL XYLENES (µg/L)	TOC ELEVATION (feet)	DEPTH TO GROUND WATER (ft)	GROUND WATER ELEVATION (ft)	FREE PRODUCT THICKNESS (ft)
MW-16	01/29/16	<1.0	<1.0	<1.0	<1.0	99.18	2.75	96.43	NP
	04/28/16	<1.0	<1.0	<1.0	<1.0		1.50	97.68	NP
	07/26/16	<1.0	<1.0	<1.0	<1.0		2.43	96.75	NP
	10/18/16	<1.0	<1.0	<1.0	<1.0		1.63	97.55	NP
	01/06/17	<1.0	<1.0	<1.0	<1.0		2.72	96.46	NP
	04/05/17	<1.0	<1.0	<1.0	<1.0		3.10	96.08	NP
	07/25/17	<1.0	<1.0	<1.0	<1.0		2.99	96.19	NP
	10/12/17	<1.0	<1.0	<1.0	<1.0		1.52	99.66	NP
	01/25/18	<1.0	<1.0	<1.0	<2.0		1.96	97.22	NP
	04/06/18	<1.0	<1.0	1.6	9.6		2.32	96.86	NP
	07/09/18	<1.0	<1.0	<1.0	<2.0		2.48	96.70	NP
	10/12/18	<1.0	<1.0	<1.0	2.5		2.42	96.76	NP
01/29/19	<1.0	<1.0	<1.0	<2.0	2.31	96.87	NP		
MW-17	07/09/13	851		390	9,256	99.45	2.5	96.95	NP
	07/19/13	NS	NS	NS	NS		2.02	97.43	NP
	10/18/13	961	<1	82.2	8473		1.43	98.02	NP
	01/13/14	455	<1	101	4781		2.19	97.26	NP
	04/02/14	435	4.4	69.1	5184		2.69	96.76	NP
	07/15/14	1081	<1.0	106	5741		2.46	96.99	NP
	10/07/14	461	<1.0	247	2008		1.85	97.60	NP
	01/20/15	212	2.3	181	1844		1.86	97.59	NP
	04/20/15	26	<1.0	4.4	140		2.19	97.26	NP
	07/20/15	280	<1.0	21	130		2.27	97.18	NP
	10/28/15	77	<1.0	29	54		1.75	97.70	NP
	01/29/16	<1.0	<1.0	<1.0	<1.0		2.97	96.48	NP
	04/28/16	<1.0	<1.0	<1.0	<1.0		1.70	97.75	NP
	07/26/16	16	<1.0	1.8	18		2.64	96.81	NP
	10/18/16	71	<1.0	2.9	17		1.83	97.62	NP
	01/06/17	91	<1.0	7.2	5.5		2.91	96.54	NP
	04/05/17	50	<1.0	4.1	<1.0		3.28	96.17	NP
	07/25/17	3.1	<1.0	<1.0	<1.0		3.16	96.29	NP
	10/12/17	14	<1.0	1.3	25		1.69	99.66	NP
	01/25/18	190	1.1	3.8	10		2.15	97.30	NP
04/06/18	<1.0	<1.0	<1.0	<2.0	2.46	96.99	NP		
07/09/18	NS	NS	NS	NS	DRY	DRY	DRY		
10/12/18	NS	NS	NS	NS	DRY	DRY	DRY		
01/29/19	<1.0	<1.0	<1.0	<2.0	3.00	96.45	NP		
MW-18	07/09/13	<1.0	<1.0	<1.0	<1.0	98.28	1.54	96.74	NP
	07/19/13	NS	NS	NS	NS		1.02	97.26	NP
	10/18/13	<1	<1	<1	<1		0.66	97.62	NP
	01/13/14	<1	<1	<1	<1		1.15	97.13	NP
	04/02/14	<1	<1	<1	<1		1.68	96.60	NP
	07/15/14	<1.0	<1.0	<1.0	<1.0		1.49	96.79	NP
	10/07/14	<1.0	<1.0	<1.0	<1.0		0.81	97.47	NP
	01/20/15	<1.0	<1.0	<1.0	<1.0		0.83	97.45	NP
	04/20/15	<1.0	<1.0	<1.0	<1.0		1.06	97.22	NP
	07/20/15	<1.0	<1.0	<1.0	<1.0		1.29	96.99	NP
	10/28/15	<1.0	<1.0	<1.0	<1.0		0.76	97.52	NP

SAMPLE LOCATION	DATE	BENZENE (µg/L)	TOLUENE (µg/L)	ETHYL BENZENE (µg/L)	TOTAL XYLENES (µg/L)	TOC ELEVATION (feet)	DEPTH TO GROUND WATER (ft)	GROUND WATER ELEVATION (ft)	FREE PRODUCT THICKNESS (ft)
MW-18	01/29/16	<1.0	<1.0	<1.0	<1.0	98.28	1.98	96.30	NP
	04/28/16	<1.0	<1.0	<1.0	<1.0		too shallow	too shallow	NP
	07/26/16	<1.0	<1.0	<1.0	<1.0		1.81	96.47	NP
	10/18/16	<1.0	<1.0	<1.0	<1.0		1.00	97.28	NP
	01/06/17	<1.0	<1.0	<1.0	<1.0		2.09	96.19	NP
	04/05/17	<1.0	<1.0	<1.0	<1.0		2.47	95.81	NP
	07/25/17	<1.0	<1.0	<1.0	<1.0		2.36	95.92	NP
	10/12/17	<1.0	<1.0	<1.0	<1.0		0.89	99.66	NP
	01/25/18	<1.0	<1.0	<1.0	<2.0		1.12	97.16	NP
	04/06/18	<1.0	<1.0	<1.0	<2.0		1.45	96.83	NP
	07/09/18	<1.0	<1.0	<1.0	<2.0		1.70	96.58	NP
	10/12/18	<1.0	<1.0	<1.0	<2.0		1.58	96.70	NP
01/29/19	<1.0	<1.0	<1.0	<2.0	1.42	96.86	NP		
MW-19	07/09/13	<1.0	<1.0	<1.0	<1.0	98.47	1.71	96.76	NP
	07/19/13	NS	NS	NS	NS		1.1	97.37	NP
	10/18/13	<1	<1	<1	<1		1.78	96.69	NP
	01/13/14	<1	<1	<1	<1		1.33	97.14	NP
	04/02/14	<1	<1	<1	<1		1.84	96.63	NP
	07/15/14	<1.0	<1.0	<1.0	<1.0		1.65	96.82	NP
	10/07/14	<1.0	<1.0	<1.0	<1.0		0.99	97.48	NP
	01/20/15	<1.0	<1.0	<1.0	<1.0		1.01	97.46	NP
	04/20/15	<1.0	<1.0	<1.0	<1.0		1.24	97.23	NP
MW-20	07/19/13	<1.0	<1.0	<1.0	<1.0	99.40	1.33	98.07	NP
	10/18/13	<1	<1	<1	<1		1.51	97.89	NP
	01/13/14	<1	<1	<1	<1		2.11	97.29	NP
	04/02/14	<1	<1	<1	<1		2.57	96.83	NP
	07/15/14	8.4	<1.0	<1.0	<1.0		2.32	97.08	NP
	10/07/14	<1.0	<1.0	<1.0	<1.0		1.70	97.70	NP
	01/20/15	<1.0	<1.0	<1.0	<1.0		1.71	97.69	NP
04/20/15	<1.0	<1.0	<1.0	<1.0	1.95	97.45	NP		
MW-21	07/19/13	<1.0	<1.0	<1.0	<1.0	99.31	1.67	97.64	NP
	10/18/13	<1	<1	<1	<1		1.51	97.80	NP
	01/13/14	<1	<1	<1	<1		2.10	97.21	NP
	04/02/14	<1	<1	<1	<1		2.56	96.75	NP
	07/15/14	<1.0	<1.0	<1.0	<1.0		2.33	96.98	NP
	10/07/14	<1.0	<1.0	<1.0	<1.0		1.71	97.60	NP
	01/20/15	<1.0	<1.0	<1.0	<1.0		1.73	97.58	NP
04/20/15	<1.0	<1.0	<1.0	<1.0	1.96	97.35	NP		
MW-22	07/19/13	<1.0	<1.0	<1.0	<1.0	99.12	2.01	97.11	NP
	10/18/13	<1	<1	<1	<1		1.73	97.39	NP
	01/13/14	<1	<1	<1	<1		2.01	97.11	NP
	04/02/14	<1	<1	<1	<1		2.49	96.63	NP
	07/15/14	<1.0	<1.0	<1.0	<1.0		2.30	96.82	NP
	10/07/14	<1.0	<1.0	<1.0	<1.0		1.85	97.27	NP
	01/20/15	<1.0	<1.0	<1.0	<1.0		1.86	97.26	NP
04/20/15	<1.0	<1.0	<1.0	<1.0	2.09	97.03	NP		

SAMPLE LOCATION	DATE	BENZENE (µg/L)	TOLUENE (µg/L)	ETHYL BENZENE (µg/L)	TOTAL XYLENES (µg/L)	TOC ELEVATION (feet)	DEPTH TO GROUND WATER (ft)	GROUND WATER ELEVATION (ft)	FREE PRODUCT THICKNESS (ft)
MW-22	07/20/15	<1.0	<1.0	<1.0	<1.0	99.12	1.10	98.02	NP
	10/28/15	<1.0	<1.0	<1.0	<1.0		0.59	98.53	NP
	01/29/16	<1.0	<1.0	<1.0	<1.0		1.79	97.33	NP
	04/28/16	<1.0	<1.0	<1.0	<1.0		too shallow	too shallow	NP
	07/26/16	<1.0	<1.0	<1.0	<1.0		1.80	97.32	NP
	10/18/16	<1.0	<1.0	<1.0	<1.0		0.99	98.13	NP
	01/06/17	<1.0	<1.0	<1.0	<1.0		2.07	97.05	NP
	04/05/17	<1.0	<1.0	<1.0	<1.0		2.45	96.67	NP
	07/25/17	<1.0	<1.0	<1.0	<1.0		2.34	96.78	NP
	10/12/17	<1.0	<1.0	<1.0	<1.0		0.88	99.66	NP
	01/25/18	<1.0	<1.0	<1.0	<2.0		2.05	97.07	NP
	04/06/18	<1.0	<1.0	<1.0	<2.0		2.25	96.87	NP
	07/09/18	<1.0	<1.0	<1.0	2.8		2.47	96.65	NP
	10/12/18	<1.0	<1.0	<1.0	<2.0		2.42	96.70	NP
01/29/19	<1.0	<1.0	<1.0	<2.0	2.26	96.86	NP		
MW-23	07/19/13	<1.0	<1.0	<1.0	<1.0	98.77	1.41	97.36	NP
	10/18/13	<1	<1	<1	<1		0.98	97.79	NP
	01/13/14	<1	<1	<1	<1		1.52	97.25	NP
	04/02/14	<1	<1	<1	<1		2.01	96.76	NP
	07/15/14	<1.0	<1.0	<1.0	<1.0		1.82	96.95	NP
	10/07/14	<1.0	<1.0	<1.0	<1.0		1.16	97.61	NP
	01/20/15	<1.0	<1.0	<1.0	<1.0		1.18	97.59	NP
	04/20/15	<1.0	<1.0	<1.0	<1.0		1.42	97.35	NP
	07/20/15	<1.0	<1.0	<1.0	<1.0		1.62	97.15	NP
	10/28/15	<1.0	<1.0	<1.0	<1.0		1.10	97.67	NP
	01/29/16	<1.0	<1.0	<1.0	<1.0		2.32	96.45	NP
	04/28/16	<1.0	<1.0	<1.0	<1.0		1.06	97.71	NP
	07/26/16	<1.0	<1.0	<1.0	<1.0		1.99	96.78	NP
	10/18/16	<1.0	<1.0	<1.0	<1.0		1.19	97.58	NP
	01/06/17	<1.0	<1.0	<1.0	<1.0		2.27	96.50	NP
	04/05/17	<1.0	<1.0	<1.0	<1.0		2.63	96.14	NP
	07/25/17	<1.0	<1.0	<1.0	<1.0		2.53	96.24	NP
	10/12/17	<1.0	<1.0	<1.0	<1.0		1.07	99.66	NP
	01/25/18	<1.0	<1.0	<1.0	<2.0		1.45	97.32	NP
04/06/18	<1.0	<1.0	<1.0	<2.0	1.75	97.02	NP		
07/09/18	<1.0	<1.0	<1.0	<2.0	1.97	96.80	NP		
10/12/18	<1.0	<1.0	<1.0	<2.0	1.93	96.84	NP		
01/29/19	<1.0	<1.0	<1.0	<2.0	1.76	97.01	NP		
MW-24	07/19/13	2.4	<1.0	36.6	1,364	99.08	1.57	97.51	NP
	10/18/13	<1	<1	<1	<1		1.2	97.88	NP
	01/13/14	3.3	<1	23.7	64.4		1.74	97.34	NP
	04/02/14	1.9	<1	10.3	35.7		2.23	96.85	NP
	07/15/14	<1.0	<1.0	4.0	1.4		2.01	97.07	NP
	10/07/14	<1.0	<1.0	<1.0	1.5		1.40	97.68	NP
	01/20/15	<1.0	<1.0	<1.0	<1.0		1.39	97.69	NP
	04/20/15	<1.0	<1.0	<1.0	4.6		1.62	97.46	NP
	07/20/15	<1.0	<1.0	<1.0	<1.0		1.82	97.26	NP
	10/28/15	<1.0	<1.0	<1.0	<1.0		1.30	97.78	NP

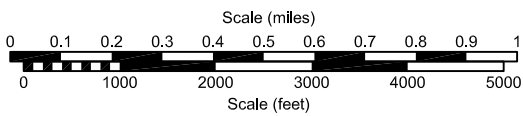
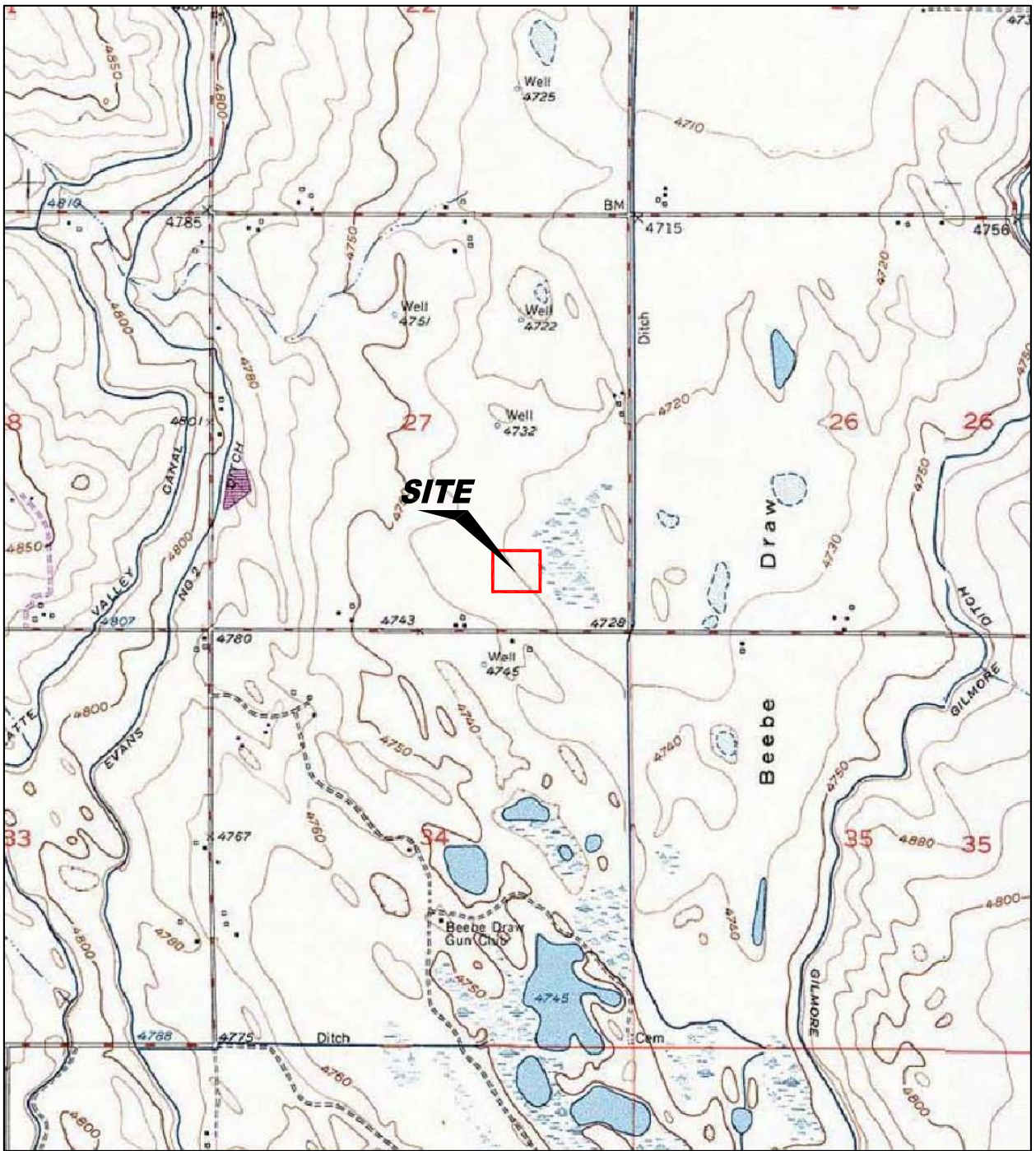
SAMPLE LOCATION	DATE	BENZENE (µg/L)	TOLUENE (µg/L)	ETHYL BENZENE (µg/L)	TOTAL XYLENES (µg/L)	TOC ELEVATION (feet)	DEPTH TO GROUND WATER (ft)	GROUND WATER ELEVATION (ft)	FREE PRODUCT THICKNESS (ft)
MW-26	03/17/16	23	<1.0	2.2	59	99.30	NM	NM	NP
	04/28/16	60	<1.0	20	110		too shallow	too shallow	NP
	07/26/16	40	<1.0	6.3	17		1.79	97.51	NP
	10/18/16	2.8	<1.0	10	190		0.98	98.32	NP
	01/06/17	29	<1.0	5.2	57		2.06	97.24	NP
	04/05/17	38	<1.0	6.5	75		2.44	96.86	NP
	07/25/17	<1.0	<1.0	<1.0	<1.0		2.21	97.09	NP
	10/12/17	<1.0	<1.0	<1.0	<1.0		0.75	99.66	NP
	01/25/18	<1.0	<1.0	<1.0	72		2.00	97.30	NP
	04/06/18	130	<1.0	1.2	6900		2.32	96.98	NP
	07/09/18	3.2	<1.0	5.7	50		2.58	96.72	NP
	10/12/18	<1.0	<1.0	<1.0	2.4		2.43	96.87	NP
	01/29/19	<1.0	<1.0	<1.0	6.7		2.27	97.03	NP
MW-27	07/19/13	<1.0	<1.0	<1.0	<1.0	98.40	0.91	97.49	NP
	10/18/13	<1	<1	<1	<1		0.7	97.70	NP
	01/13/14	<1	<1	<1	<1		1.23	97.17	NP
	04/02/14	<1	<1	<1	<1		1.73	96.67	NP
	07/15/14	<1.0	<1.0	<1.0	<1.0		3.41	94.99	NP
	10/07/14	<1.0	<1.0	<1.0	<1.0		0.87	97.53	NP
	01/20/15	<1.0	<1.0	<1.0	<1.0		0.89	97.51	NP
	04/20/15	<1.0	<1.0	<1.0	<1.0		1.12	97.28	NP
MW-28	07/19/13	<1.0	<1.0	<1.0	<1.0	98.64	1.14	97.50	NP
	10/18/13	<1	<1	<1	<1		0.79	97.85	NP
	01/13/14	<1	<1	<1	<1		1.28	97.36	NP
	04/02/14	<1	<1	<1	<1		1.79	96.85	NP
	07/15/14	<1.0	<1.0	<1.0	<1.0		1.59	97.05	NP
	10/07/14	<1.0	<1.0	<1.0	<1.0		0.95	97.69	NP
	01/20/15	<1.0	<1.0	<1.0	<1.0		0.96	97.68	NP
	04/20/15	<1.0	<1.0	<1.0	<1.0		1.19	97.45	NP
	07/20/15	<1.0	<1.0	<1.0	<1.0		1.38	97.26	NP
	10/28/15	<1.0	<1.0	<1.0	<1.0		0.87	97.77	NP
	01/29/16	<1.0	<1.0	<1.0	<1.0		2.07	96.57	NP
	04/28/16	<1.0	<1.0	<1.0	<1.0		too shallow	too shallow	NP
	07/26/16	<1.0	<1.0	<1.0	<1.0		1.82	96.82	NP
	10/18/16	<1.0	<1.0	<1.0	<1.0		1.81	96.83	NP
	01/06/17	<1.0	<1.0	<1.0	<1.0		2.88	95.76	NP
	04/05/17	<1.0	<1.0	<1.0	<1.0		2.49	96.15	NP
	07/25/17	<1.0	<1.0	<1.0	<1.0		2.27	96.37	NP
	10/12/17	<1.0	<1.0	<1.0	<1.0		0.81	99.66	NP
	01/25/18	<1.0	<1.0	<1.0	<2.0		1.23	97.41	NP
	04/06/18	3.6	<1.0	1.4	840		1.53	97.11	NP
07/09/18	NS	NS	NS	NS		DRY	DRY	DRY	
10/12/18	<1.0	<1.0	<1.0	<2.0		1.64	97.00	NP	
01/29/19	<1.0	<1.0	<1.0	<2.0		2.15	96.49	NP	
MW-29	07/19/13	<1.0	<1.0	<1.0	<1.0	101.04	3.45	97.59	NP
	10/18/13	<1	<1	<1	<1		3.03	98.01	NP
	01/13/14	<1	<1	<1	<1		3.58	97.46	NP
	04/02/14	<1	<1	<1	<1		4.13	96.91	NP

SAMPLE LOCATION	DATE	BENZENE (µg/L)	TOLUENE (µg/L)	ETHYL BENZENE (µg/L)	TOTAL XYLENES (µg/L)	TOC ELEVATION (feet)	DEPTH TO GROUND WATER (ft)	GROUND WATER ELEVATION (ft)	FREE PRODUCT THICKNESS (ft)
MW-29	07/15/14	<1.0	<1.0	<1.0	<1.0	101.04	3.96	97.08	NP
	10/07/14	<1.0	<1.0	<1.0	<1.0		3.32	97.72	NP
	01/20/15	<1.0	<1.0	<1.0	<1.0		NF	NF	NP
	04/20/15	NF	NF	NF	NF		NF	NF	NP
MW-30	07/19/13	<1.0	<1.0	<1.0	<1.0	100.22	2.73	97.49	NP
	10/18/13	<1	<1	<1	<1		2.3	97.92	NP
	01/13/14	<1	<1	<1	<1		2.82	97.40	NP
	04/02/14	<1	<1	<1	<1		3.35	96.87	NP
	07/15/14	<1.0	<1.0	<1.0	<1.0		3.22	97.00	NP
	10/07/14	<1.0	<1.0	<1.0	<1.0		2.59	97.63	NP
	01/20/15	<1.0	<1.0	<1.0	<1.0		2.61	97.61	NP
	04/20/15	<1.0	<1.0	<1.0	<1.0		2.94	97.28	NP
Table 910-1 Limits		5	560	700	1,400				

Bold face values exceed the COGCC limits

NP - No Free Product

NS- Not Sampled



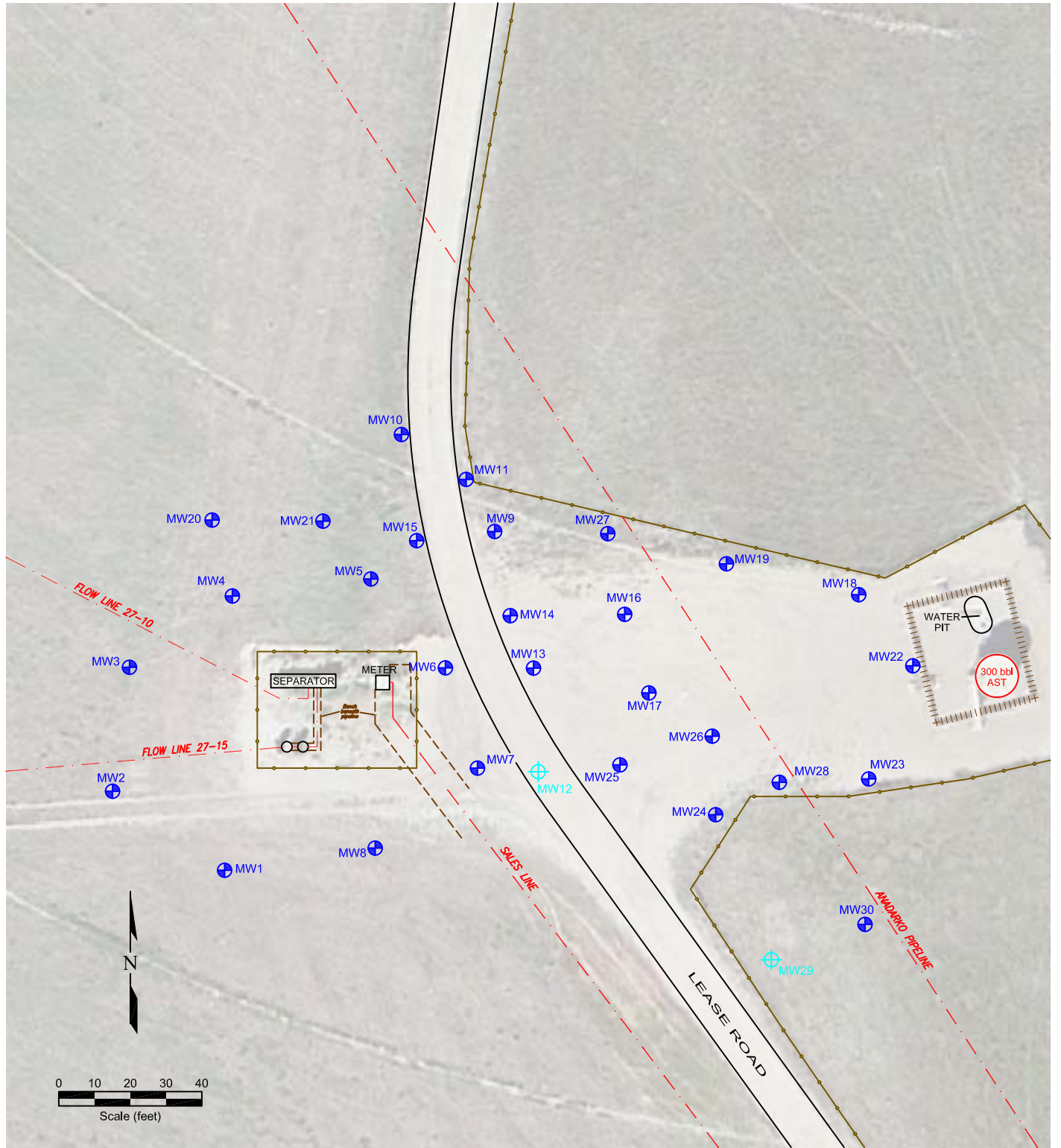
USGS 7.5 MINUTE SERIES (TOPOGRAPHIC)

Figure 1
 SITE LOCATION MAP

Noble Libsack R G27-15
 SW SE Section 27, T4N, R65W
 Weld County, Colorado

Project No. C013-009	Prepared by JMA	Drawn by JMA
Date 2/8/19	Reviewed by	Filename 13009T





LEGEND







-  MONITORING WELL
-  DESTROYED MONITORING WELL
-  FENCE LINE
-  PIPELINE
-  CONTAINMENT BERM
-  ABOVE GROUND STORAGE TANK

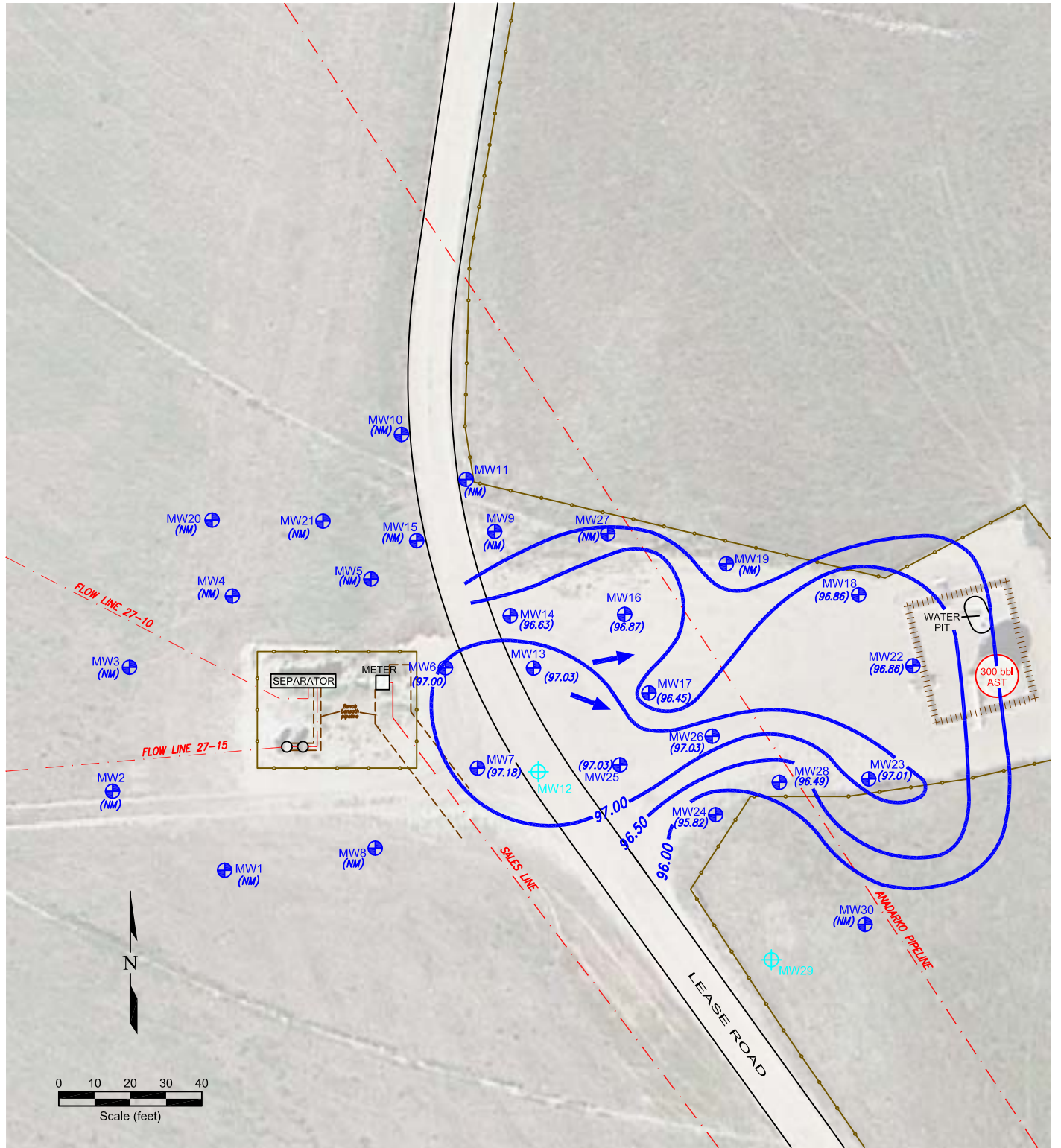
Figure 2

SITE MAP

Noble Libsack R G27-15
 SW SE Section 27, T4N, R65W
 Weld County, Colorado

Project No. C013-009	Prepared by	Drawn by JMA
Date 2/8/19	Reviewed by EB	Filename 13009U





LEGEND












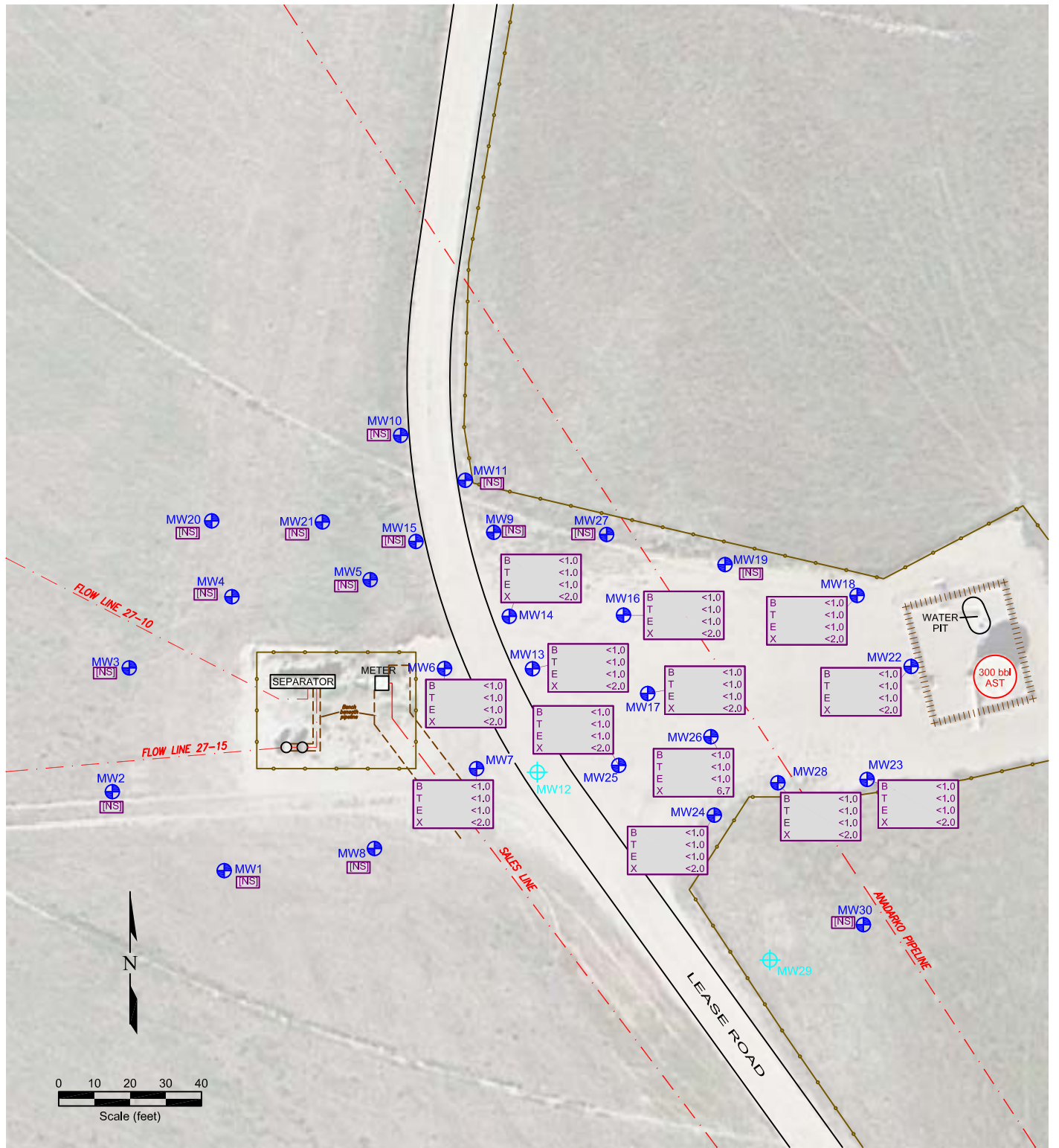
-  MONITORING WELL
-  DESTROYED MONITORING WELL
-  FENCE LINE
-  PIPELINE
-  CONTAINMENT BERM
-  ABOVE GROUND STORAGE TANK
-  GROUND WATER ELEVATION (ft above arbitrary datum)
-  NOT MEASURED
-  WATER TABLE CONTOUR
-  GROUND WATER FLOW DIRECTION
-  NOT USED FOR CONTOURING

Figure 3
INFERRED GROUND WATER CONTOUR MAP
JANUARY 29, 2019

Noble Libsack R G27-15
 SW SE Section 27, T4N, R65W
 Weld County, Colorado

Project No. C013-009	Prepared by	Drawn by JMA
Date 2/8/19	Reviewed by EB	Filename 13009U





LEGEND

- MONITORING WELL
- DESTROYED MONITORING WELL
- FENCE LINE
- PIPELINE
- CONTAINMENT BERM
- ABOVE GROUND STORAGE TANK
- | | |
|---|------|
| B | <1.0 |
| T | <1.0 |
| E | <1.0 |
| X | <1.0 |

 BENZENE (ug/L)
- | | |
|---|------|
| B | <1.0 |
| T | <1.0 |
| E | <1.0 |
| X | <1.0 |

 TOLUENE (ug/L)
- | | |
|---|------|
| B | <1.0 |
| T | <1.0 |
| E | <1.0 |
| X | <1.0 |

 ETHYLBENZENE (ug/L)
- | | |
|---|------|
| B | <1.0 |
| T | <1.0 |
| E | <1.0 |
| X | <1.0 |

 TOTAL XYLENES (ug/L)
- NOT SAMPLED

Figure 4

**GROUND WATER CHEMISTRY MAP
JANUARY 29, 2019**

Noble Libsack R G27-15
SW SE Section 27, T4N, R65W
Weld County, Colorado

Project No. C013-009	Prepared by	Drawn by JMA
Date 2/8/19	Reviewed by EB	Filename 13009U



Summit Scientific

4653 Table Mountain Drive, Golden, Colorado 80403

303.277.9310

February 06, 2019

Paul Henehan

Fremont Environmental


PO Box 1289

Wellington, CO 80549

RE: Noble - Libsack R G27-15

Enclosed are the results of analyses for samples received by Summit Scientific on 01/29/19 16:40. If you have any questions concerning this report, please feel free to contact me.

Sincerely,

A handwritten signature in black ink that reads "Muri Premer". The signature is written in a cursive style with a large initial "M" and a long, sweeping underline.

Muri Premer For Ben Shrewsbury

Laboratory Manager



Fremont Environmental
PO Box 1289
Wellington CO, 80549

Project: Noble - Libsack R G27-15

Project Number: C013-009
Project Manager: Paul Henehan

Reported:
02/06/19 15:06

ANALYTICAL REPORT FOR SAMPLES

Sample ID	Laboratory ID	Matrix	Date Sampled	Date Received
MW-6	1901353-01	Water	01/29/19 00:00	01/29/19 16:40
MW-7	1901353-02	Water	01/29/19 00:00	01/29/19 16:40
MW-13	1901353-03	Water	01/29/19 00:00	01/29/19 16:40
MW-14	1901353-04	Water	01/29/19 00:00	01/29/19 16:40
MW-16	1901353-05	Water	01/29/19 00:00	01/29/19 16:40
MW-17	1901353-06	Water	01/29/19 00:00	01/29/19 16:40
MW-18	1901353-07	Water	01/29/19 00:00	01/29/19 16:40
MW-22	1901353-08	Water	01/29/19 00:00	01/29/19 16:40
MW-23	1901353-09	Water	01/29/19 00:00	01/29/19 16:40
MW-24	1901353-10	Water	01/29/19 00:00	01/29/19 16:40
MW-25	1901353-11	Water	01/29/19 00:00	01/29/19 16:40
MW-26	1901353-12	Water	01/29/19 00:00	01/29/19 16:40
MW-28	1901353-13	Water	01/29/19 00:00	01/29/19 16:40

Summit Scientific

The results in this report apply to the samples analyzed in accordance with the chain of custody document. This analytical report must be reproduced in its entirety.

Summit Scientific

S₂

1901353.1

4653 Table Mountain Drive ♦ Golden, Colorado 80403

303-277-9310 ♦ 303-374-5933 (f)

Page 1 of 2

Client: Fremont Environmental

Project Manager: Paul Henehan

Address: P.O Box 1289

E-Mail: paulh@fremontenv.com, ethanb@fremontenv.com

City/State/Zip: Wellington, CO 80549

Bill to: Jacob


Phone: 303-956-8714

Project Name: Noble - Libsack G 27 - 15

Sampler Name: Black

Project Number: COB-009

ID	Sample Description	Date Sampled	Time Sampled	# of containers	Preservative				Matrix				Analysis Requested						Special Instructions			
					HCl	HNO3	None	Other	Water	Soil	Air-Canister #	Other	BTEX	Naphthalene	GRO	DRO	SAR	EC		pH		
1	MW-6	1/29/19		2			X		X					X								
2	MW-7																					
3	MW-13																					
4	MW-14																					
5	MW-16																					
6	MW-17																					
7	MW-18																					
8	MW-22																					
9	MW-23																					
10	MW-24																					

Relinquished by: <u>Ethan Black</u>	Date/Time: <u>1/29/19 1640</u>	Received by: 	Date/Time: <u>1.29.19 1640</u>	Turn Around Time (Check) Same Day <input type="checkbox"/> 72 hours <input type="checkbox"/> 24 hours <input type="checkbox"/> Standard <input checked="" type="checkbox"/> 48 hours <input type="checkbox"/> Sample Integrity: Temperature Upon Receipt: <u>1.2</u> Samples Intact: <input checked="" type="checkbox"/> Yes <input type="checkbox"/> No	Notes:
Relinquished by:	Date/Time:	Received by:	Date/Time:		
Relinquished by:	Date/Time:	Received by:	Date/Time:		

Summit Scientific

S₂

1901353.2

4653 Table Mountain Drive ♦ Golden, Colorado 80403
303-277-9310 ♦ 303-374-5933 (f)

Page 2 of 2

Client: Fremont Environmental

Project Manager: Paul Henehan

Address: P.O Box 1289

E-Mail: paulh@fremontenv.com, ethanb@fremontenv.com

City/State/Zip: Wellington, CO 80549

Bill to: Jacob


Phone: 303-956-8714

Project Name: Noble - Libsack G. 27 - 15

Sampler Name: Black

Project Number: CO13-009

ID	Sample Description	Date Sampled	Time Sampled	# of containers	Preservative				Matrix				Analysis Requested						Special Instructions			
					HCl	HNO3	None	Other	Water	Soil	Air-Canister #	Other	BTEX	Naphthalene	GRO	DRO	SAR	EC		pH		
1	MW-25	1/29/19		2			X		X					X								
2	MW-26	I		I			I		I					I								
3	MW-28	I		I			I		I					I								
4																						
5																						
6																						
7																						
8																						
9																						
10																						

Relinquished by: <u>Ethan Black</u>	Date/Time: <u>1/29/19 1640</u>	Received by: 	Date/Time: <u>1.29.19 1640</u>	Turn Around Time (Check) Same Day <input type="checkbox"/> 72 hours 24 hours <input type="checkbox"/> Standard <input checked="" type="checkbox"/> 48 hours <input type="checkbox"/> Sample Integrity: Temperature Upon Receipt: <u>11.2</u> Samples Intact: <input checked="" type="checkbox"/> Yes <input type="checkbox"/> No	Notes:
Relinquished by:	Date/Time:	Received by:	Date/Time:		
Relinquished by:	Date/Time:	Received by:	Date/Time:		

Sample Receipt Checklist

S2 Work Order 1901353

Client: Freemont Client Project ID: Noble - Libsack G27-15

Shipped Via: H.D./P.U./FedEx/UPS/USPS/Other H.D. Airbill #: _____

Matrix (check all that apply): Air Soil/Solid Water Other: _____
(Describe)

Temp (°C)	<u>11.2</u>
-----------	-------------

Thermometer ID: 61857155-K

	Yes	No	N/A	Comments (if any)
If samples require cooling, was the temperature at 4°C +/- 2°C ⁽¹⁾ ? NOTE: If samples are delivered the same day of sampling, this requirement is met provided that there is evidence that cooling has begun.	/			
Were all samples received intact ⁽¹⁾ ?	/			
Was adequate sample volume provided ⁽¹⁾ ?	/			
If custody seals are present, are they intact ⁽¹⁾ ?			/	
Are samples with holding times due within 48 hours sample due within 48 hours present?			/	
Is a chain-of-custody (COC) form present and filled out completely ⁽¹⁾ ?	/			
Does the COC agree with the number and type of sample bottles received ⁽¹⁾ ?	/			
Do the sample IDs on the bottle labels match the COC ⁽¹⁾ ?	/			
Is the COC properly relinquished by the client w/ date and time recorded ⁽¹⁾ ?	/			
For volatiles in water – is there headspace present? If yes, contact client and note in narrative.		/		
Are samples preserved that require preservation (excluding cooling) ⁽¹⁾ ? Note the type of preservative in the Comments column – HCl, H2SO4, NaOH, HNO3, ect			/	
If samples are acid preserved for metals, is the pH ≤ 2 ⁽¹⁾ ? Record the pH in Comments.			/	
If dissolved metals are requested, were samples field filtered?			/	

Additional Comments (if any):

⁽¹⁾ If NO, then contact the client before proceeding with analysis and note in case narrative.

WP
Custodian Printed Name or Initials

[Signature]
Signature of Custodian

1.29.19 1703
Date/Time



Fremont Environmental
 PO Box 1289
 Wellington CO, 80549

Project: Noble - Libsack R G27-15

Project Number: C013-009
 Project Manager: Paul Henehan

Reported:
 02/06/19 15:06

MW-6
1901353-01 (Water)

Summit Scientific

Volatile Organic Compounds by EPA Method 8260B

Date Sampled: **01/29/19 00:00**

Analyte	Result	Reporting		Dilution	Batch	Prepared	Analyzed	Method	Notes
		Limit	Units						
Benzene	ND	1.0	ug/l	1	1901412	01/31/19	02/04/19	EPA 8260B	
Toluene	ND	1.0	"	"	"	"	"	"	
Ethylbenzene	ND	1.0	"	"	"	"	"	"	
Xylenes (total)	ND	2.0	"	"	"	"	"	"	

Date Sampled: **01/29/19 00:00**

Analyte	Result	Reporting		Dilution	Batch	Prepared	Analyzed	Method	Notes
		Limit	Units						
Surrogate: 1,2-Dichloroethane-d4		107 %	23-173		"	"	"	"	
Surrogate: Toluene-d8		102 %	20-170		"	"	"	"	
Surrogate: 4-Bromofluorobenzene		86.6 %	21-167		"	"	"	"	

Summit Scientific

The results in this report apply to the samples analyzed in accordance with the chain of custody document. This analytical report must be reproduced in its entirety.



Fremont Environmental
 PO Box 1289
 Wellington CO, 80549

Project: Noble - Libsack R G27-15

Project Number: C013-009
 Project Manager: Paul Henehan

Reported:
 02/06/19 15:06

MW-7
1901353-02 (Water)

Summit Scientific

Volatile Organic Compounds by EPA Method 8260B

Date Sampled: **01/29/19 00:00**

Analyte	Result	Reporting		Units	Dilution	Batch	Prepared	Analyzed	Method	Notes
		Limit								
Benzene	ND	1.0		ug/l	1	1901412	01/31/19	02/04/19	EPA 8260B	
Toluene	ND	1.0		"	"	"	"	"	"	
Ethylbenzene	ND	1.0		"	"	"	"	"	"	
Xylenes (total)	ND	2.0		"	"	"	"	"	"	

Date Sampled: **01/29/19 00:00**

Analyte	Result	Reporting		Units	Dilution	Batch	Prepared	Analyzed	Method	Notes
		Limit								
Surrogate: 1,2-Dichloroethane-d4		106 %		23-173		"	"	"	"	
Surrogate: Toluene-d8		103 %		20-170		"	"	"	"	
Surrogate: 4-Bromofluorobenzene		88.7 %		21-167		"	"	"	"	

Summit Scientific

The results in this report apply to the samples analyzed in accordance with the chain of custody document. This analytical report must be reproduced in its entirety.



Fremont Environmental
 PO Box 1289
 Wellington CO, 80549

Project: Noble - Libsack R G27-15

Project Number: C013-009
 Project Manager: Paul Henehan

Reported:
 02/06/19 15:06

MW-13
1901353-03 (Water)

Summit Scientific

Volatile Organic Compounds by EPA Method 8260B

Date Sampled: **01/29/19 00:00**

Analyte	Result	Reporting		Units	Dilution	Batch	Prepared	Analyzed	Method	Notes
		Limit								
Benzene	ND	1.0		ug/l	1	1901412	01/31/19	02/04/19	EPA 8260B	
Toluene	ND	1.0		"	"	"	"	"	"	
Ethylbenzene	ND	1.0		"	"	"	"	"	"	
Xylenes (total)	ND	2.0		"	"	"	"	"	"	

Date Sampled: **01/29/19 00:00**

Analyte	Result	Reporting		Units	Dilution	Batch	Prepared	Analyzed	Method	Notes
		Limit								
Surrogate: 1,2-Dichloroethane-d4		107 %		23-173		"	"	"	"	
Surrogate: Toluene-d8		103 %		20-170		"	"	"	"	
Surrogate: 4-Bromofluorobenzene		81.9 %		21-167		"	"	"	"	

Summit Scientific

The results in this report apply to the samples analyzed in accordance with the chain of custody document. This analytical report must be reproduced in its entirety.



Fremont Environmental
 PO Box 1289
 Wellington CO, 80549

Project: Noble - Libsack R G27-15

Project Number: C013-009
 Project Manager: Paul Henehan

Reported:
 02/06/19 15:06

MW-14
1901353-04 (Water)

Summit Scientific

Volatile Organic Compounds by EPA Method 8260B

Date Sampled: **01/29/19 00:00**

Analyte	Result	Reporting		Units	Dilution	Batch	Prepared	Analyzed	Method	Notes
		Limit								
Benzene	ND	1.0		ug/l	1	1901412	01/31/19	02/04/19	EPA 8260B	
Toluene	ND	1.0		"	"	"	"	"	"	
Ethylbenzene	ND	1.0		"	"	"	"	"	"	
Xylenes (total)	ND	2.0		"	"	"	"	"	"	

Date Sampled: **01/29/19 00:00**

Analyte	Result	Reporting		Units	Dilution	Batch	Prepared	Analyzed	Method	Notes
		Limit								
Surrogate: 1,2-Dichloroethane-d4		105 %		23-173		"	"	"	"	
Surrogate: Toluene-d8		104 %		20-170		"	"	"	"	
Surrogate: 4-Bromofluorobenzene		91.7 %		21-167		"	"	"	"	

Summit Scientific

The results in this report apply to the samples analyzed in accordance with the chain of custody document. This analytical report must be reproduced in its entirety.



Fremont Environmental
 PO Box 1289
 Wellington CO, 80549

Project: Noble - Libsack R G27-15

Project Number: C013-009
 Project Manager: Paul Henehan

Reported:
 02/06/19 15:06

MW-16
1901353-05 (Water)

Summit Scientific

Volatile Organic Compounds by EPA Method 8260B

Date Sampled: **01/29/19 00:00**

Analyte	Result	Reporting		Units	Dilution	Batch	Prepared	Analyzed	Method	Notes
		Limit								
Benzene	ND	1.0		ug/l	1	1901412	01/31/19	02/04/19	EPA 8260B	
Toluene	ND	1.0		"	"	"	"	"	"	
Ethylbenzene	ND	1.0		"	"	"	"	"	"	
Xylenes (total)	ND	2.0		"	"	"	"	"	"	

Date Sampled: **01/29/19 00:00**

Analyte	Result	Reporting		Units	Dilution	Batch	Prepared	Analyzed	Method	Notes
		Limit								
Surrogate: 1,2-Dichloroethane-d4		115 %		23-173		"	"	"	"	
Surrogate: Toluene-d8		98.5 %		20-170		"	"	"	"	
Surrogate: 4-Bromofluorobenzene		91.4 %		21-167		"	"	"	"	

Summit Scientific

The results in this report apply to the samples analyzed in accordance with the chain of custody document. This analytical report must be reproduced in its entirety.



Fremont Environmental
 PO Box 1289
 Wellington CO, 80549

Project: Noble - Libsack R G27-15

Project Number: C013-009
 Project Manager: Paul Henehan

Reported:
 02/06/19 15:06

MW-17
1901353-06 (Water)

Summit Scientific

Volatile Organic Compounds by EPA Method 8260B

Date Sampled: **01/29/19 00:00**

Analyte	Result	Reporting		Units	Dilution	Batch	Prepared	Analyzed	Method	Notes
		Limit								
Benzene	ND	1.0		ug/l	1	1901412	01/31/19	02/05/19	EPA 8260B	
Toluene	ND	1.0		"	"	"	"	"	"	
Ethylbenzene	ND	1.0		"	"	"	"	"	"	
Xylenes (total)	ND	2.0		"	"	"	"	"	"	

Date Sampled: **01/29/19 00:00**

Analyte	Result	Reporting		Units	Dilution	Batch	Prepared	Analyzed	Method	Notes
		Limit								
Surrogate: 1,2-Dichloroethane-d4		105 %		23-173		"	"	"	"	
Surrogate: Toluene-d8		100 %		20-170		"	"	"	"	
Surrogate: 4-Bromofluorobenzene		94.0 %		21-167		"	"	"	"	

Summit Scientific

The results in this report apply to the samples analyzed in accordance with the chain of custody document. This analytical report must be reproduced in its entirety.



Fremont Environmental
 PO Box 1289
 Wellington CO, 80549

Project: Noble - Libsack R G27-15

Project Number: C013-009
 Project Manager: Paul Henehan

Reported:
 02/06/19 15:06

MW-18
1901353-07 (Water)

Summit Scientific

Volatile Organic Compounds by EPA Method 8260B

Date Sampled: **01/29/19 00:00**

Analyte	Result	Reporting		Units	Dilution	Batch	Prepared	Analyzed	Method	Notes
		Limit								
Benzene	ND	1.0		ug/l	1	1901412	01/31/19	02/05/19	EPA 8260B	
Toluene	ND	1.0		"	"	"	"	"	"	
Ethylbenzene	ND	1.0		"	"	"	"	"	"	
Xylenes (total)	ND	2.0		"	"	"	"	"	"	

Date Sampled: **01/29/19 00:00**

Analyte	Result	Reporting		Units	Dilution	Batch	Prepared	Analyzed	Method	Notes
		Limit								
Surrogate: 1,2-Dichloroethane-d4		105 %		23-173		"	"	"	"	
Surrogate: Toluene-d8		104 %		20-170		"	"	"	"	
Surrogate: 4-Bromofluorobenzene		85.7 %		21-167		"	"	"	"	

Summit Scientific

The results in this report apply to the samples analyzed in accordance with the chain of custody document. This analytical report must be reproduced in its entirety.



Fremont Environmental
 PO Box 1289
 Wellington CO, 80549

Project: Noble - Libsack R G27-15

Project Number: C013-009
 Project Manager: Paul Henehan

Reported:
 02/06/19 15:06

MW-22
1901353-08 (Water)

Summit Scientific

Volatile Organic Compounds by EPA Method 8260B

Date Sampled: **01/29/19 00:00**

Analyte	Result	Reporting		Units	Dilution	Batch	Prepared	Analyzed	Method	Notes
		Limit								
Benzene	ND	1.0		ug/l	1	1901412	01/31/19	02/05/19	EPA 8260B	
Toluene	ND	1.0		"	"	"	"	"	"	
Ethylbenzene	ND	1.0		"	"	"	"	"	"	
Xylenes (total)	ND	2.0		"	"	"	"	"	"	

Date Sampled: **01/29/19 00:00**

Analyte	Result	Reporting		Units	Dilution	Batch	Prepared	Analyzed	Method	Notes
		Limit								
Surrogate: 1,2-Dichloroethane-d4		105 %		23-173		"	"	"	"	
Surrogate: Toluene-d8		102 %		20-170		"	"	"	"	
Surrogate: 4-Bromofluorobenzene		90.5 %		21-167		"	"	"	"	

Summit Scientific

The results in this report apply to the samples analyzed in accordance with the chain of custody document. This analytical report must be reproduced in its entirety.



Fremont Environmental
 PO Box 1289
 Wellington CO, 80549

Project: Noble - Libsack R G27-15

Project Number: C013-009
 Project Manager: Paul Henehan

Reported:
 02/06/19 15:06

MW-23
1901353-09 (Water)

Summit Scientific

Volatile Organic Compounds by EPA Method 8260B

Date Sampled: **01/29/19 00:00**

Analyte	Result	Reporting		Units	Dilution	Batch	Prepared	Analyzed	Method	Notes
		Limit								
Benzene	ND	1.0		ug/l	1	1901412	01/31/19	02/05/19	EPA 8260B	
Toluene	ND	1.0		"	"	"	"	"	"	
Ethylbenzene	ND	1.0		"	"	"	"	"	"	
Xylenes (total)	ND	2.0		"	"	"	"	"	"	

Date Sampled: **01/29/19 00:00**

Analyte	Result	Reporting		Units	Dilution	Batch	Prepared	Analyzed	Method	Notes
		Limit								
Surrogate: 1,2-Dichloroethane-d4		109 %		23-173		"	"	"	"	
Surrogate: Toluene-d8		100 %		20-170		"	"	"	"	
Surrogate: 4-Bromofluorobenzene		86.0 %		21-167		"	"	"	"	

Summit Scientific

The results in this report apply to the samples analyzed in accordance with the chain of custody document. This analytical report must be reproduced in its entirety.



Fremont Environmental
 PO Box 1289
 Wellington CO, 80549

Project: Noble - Libsack R G27-15

Project Number: C013-009
 Project Manager: Paul Henehan

Reported:
 02/06/19 15:06

MW-24
1901353-10 (Water)

Summit Scientific

Volatile Organic Compounds by EPA Method 8260B

Date Sampled: **01/29/19 00:00**

Analyte	Result	Reporting		Units	Dilution	Batch	Prepared	Analyzed	Method	Notes
		Limit								
Benzene	ND	1.0		ug/l	1	1901412	01/31/19	02/06/19	EPA 8260B	
Toluene	ND	1.0		"	"	"	"	"	"	
Ethylbenzene	ND	1.0		"	"	"	"	"	"	
Xylenes (total)	ND	2.0		"	"	"	"	"	"	

Date Sampled: **01/29/19 00:00**

Analyte	Result	Reporting		Units	Dilution	Batch	Prepared	Analyzed	Method	Notes
		Limit								
Surrogate: 1,2-Dichloroethane-d4		111 %		23-173		"	"	"	"	
Surrogate: Toluene-d8		99.0 %		20-170		"	"	"	"	
Surrogate: 4-Bromofluorobenzene		88.4 %		21-167		"	"	"	"	

Summit Scientific

The results in this report apply to the samples analyzed in accordance with the chain of custody document. This analytical report must be reproduced in its entirety.



Fremont Environmental
 PO Box 1289
 Wellington CO, 80549

Project: Noble - Libsack R G27-15

Project Number: C013-009
 Project Manager: Paul Henehan

Reported:
 02/06/19 15:06

MW-25
1901353-11 (Water)

Summit Scientific

Volatile Organic Compounds by EPA Method 8260B

Date Sampled: **01/29/19 00:00**

Analyte	Result	Reporting		Units	Dilution	Batch	Prepared	Analyzed	Method	Notes
		Limit								
Benzene	ND	1.0		ug/l	1	1901412	01/31/19	02/06/19	EPA 8260B	
Toluene	ND	1.0		"	"	"	"	"	"	
Ethylbenzene	ND	1.0		"	"	"	"	"	"	
Xylenes (total)	ND	2.0		"	"	"	"	"	"	

Date Sampled: **01/29/19 00:00**

Analyte	Result	Reporting		Units	Dilution	Batch	Prepared	Analyzed	Method	Notes
		Limit								
Surrogate: 1,2-Dichloroethane-d4		105 %		23-173		"	"	"	"	
Surrogate: Toluene-d8		97.8 %		20-170		"	"	"	"	
Surrogate: 4-Bromofluorobenzene		99.9 %		21-167		"	"	"	"	

Summit Scientific

The results in this report apply to the samples analyzed in accordance with the chain of custody document. This analytical report must be reproduced in its entirety.



Fremont Environmental
 PO Box 1289
 Wellington CO, 80549

Project: Noble - Libsack R G27-15

Project Number: C013-009
 Project Manager: Paul Henehan

Reported:
 02/06/19 15:06

MW-26
1901353-12 (Water)

Summit Scientific

Volatile Organic Compounds by EPA Method 8260B

Date Sampled: **01/29/19 00:00**

Analyte	Result	Reporting		Units	Dilution	Batch	Prepared	Analyzed	Method	Notes
		Limit								
Benzene	ND	1.0		ug/l	1	1901412	01/31/19	02/06/19	EPA 8260B	
Toluene	ND	1.0		"	"	"	"	"	"	
Ethylbenzene	ND	1.0		"	"	"	"	"	"	
Xylenes (total)	6.7	2.0		"	"	"	"	"	"	

Date Sampled: **01/29/19 00:00**

Analyte	Result	Reporting		Units	Dilution	Batch	Prepared	Analyzed	Method	Notes
		Limit								
Surrogate: 1,2-Dichloroethane-d4		115 %		23-173		"	"	"	"	
Surrogate: Toluene-d8		101 %		20-170		"	"	"	"	
Surrogate: 4-Bromofluorobenzene		90.1 %		21-167		"	"	"	"	

Summit Scientific

The results in this report apply to the samples analyzed in accordance with the chain of custody document. This analytical report must be reproduced in its entirety.



Fremont Environmental
 PO Box 1289
 Wellington CO, 80549

Project: Noble - Libsack R G27-15

Project Number: C013-009
 Project Manager: Paul Henehan

Reported:
 02/06/19 15:06

MW-28
1901353-13 (Water)

Summit Scientific

Volatile Organic Compounds by EPA Method 8260B

Date Sampled: **01/29/19 00:00**

Analyte	Result	Reporting		Units	Dilution	Batch	Prepared	Analyzed	Method	Notes
		Limit								
Benzene	ND	1.0		ug/l	1	1901412	01/31/19	02/06/19	EPA 8260B	
Toluene	ND	1.0		"	"	"	"	"	"	
Ethylbenzene	ND	1.0		"	"	"	"	"	"	
Xylenes (total)	ND	2.0		"	"	"	"	"	"	

Date Sampled: **01/29/19 00:00**

Analyte	Result	Reporting		Units	Dilution	Batch	Prepared	Analyzed	Method	Notes
		Limit								
Surrogate: 1,2-Dichloroethane-d4		105 %		23-173		"	"	"	"	
Surrogate: Toluene-d8		97.4 %		20-170		"	"	"	"	
Surrogate: 4-Bromofluorobenzene		90.7 %		21-167		"	"	"	"	

Summit Scientific

The results in this report apply to the samples analyzed in accordance with the chain of custody document. This analytical report must be reproduced in its entirety.



Fremont Environmental
PO Box 1289
Wellington CO, 80549

Project: Noble - Libsack R G27-15

Project Number: C013-009
Project Manager: Paul Henehan

Reported:
02/06/19 15:06

Volatile Organic Compounds by EPA Method 8260B - Quality Control

Summit Scientific

Analyte	Result	Reporting		Spike Level	Source		%REC		RPD		Notes
		Limit	Units		Result	%REC	Limits	RPD	Limit		

Batch 1901412 - EPA 5030 Water MS

Blank (1901412-BLK1)

Prepared: 01/31/19 Analyzed: 02/02/19

Benzene	ND	1.0	ug/l								
Toluene	ND	1.0	"								
Ethylbenzene	ND	1.0	"								
Xylenes (total)	ND	2.0	"								
Surrogate: 1,2-Dichloroethane-d4	13.1		"	13.3		98.2	23-173				
Surrogate: Toluene-d8	13.5		"	13.3		101	20-170				
Surrogate: 4-Bromofluorobenzene	12.8		"	13.3		96.0	21-167				

LCS (1901412-BS1)

Prepared: 01/31/19 Analyzed: 02/02/19

Benzene	37.2	1.0	ug/l	33.3		112	70-130				
Toluene	36.7	1.0	"	33.3		110	70-130				
Ethylbenzene	40.1	1.0	"	33.3		120	70-130				
m,p-Xylene	75.9	2.0	"	66.7		114	70-130				
o-Xylene	37.4	1.0	"	33.3		112	70-130				
Surrogate: 1,2-Dichloroethane-d4	13.6		"	13.3		102	23-173				
Surrogate: Toluene-d8	13.4		"	13.3		101	20-170				
Surrogate: 4-Bromofluorobenzene	13.2		"	13.3		99.1	21-167				

Matrix Spike (1901412-MS1)

Source: 1901351-41

Prepared: 01/31/19 Analyzed: 02/03/19

Benzene	64.1	1.0	ug/l	33.3	25.9	115	70-130				
Toluene	37.3	1.0	"	33.3	ND	112	70-130				
Ethylbenzene	42.4	1.0	"	33.3	ND	127	70-130				
m,p-Xylene	78.0	2.0	"	66.7	ND	117	70-130				
o-Xylene	39.4	1.0	"	33.3	ND	118	70-130				
Surrogate: 1,2-Dichloroethane-d4	14.5		"	13.3		109	23-173				
Surrogate: Toluene-d8	13.4		"	13.3		100	20-170				
Surrogate: 4-Bromofluorobenzene	12.8		"	13.3		96.3	21-167				

Summit Scientific

The results in this report apply to the samples analyzed in accordance with the chain of custody document. This analytical report must be reproduced in its entirety.



Fremont Environmental
 PO Box 1289
 Wellington CO, 80549

Project: Noble - Libsack R G27-15

Project Number: C013-009
 Project Manager: Paul Henehan

Reported:
 02/06/19 15:06

Volatile Organic Compounds by EPA Method 8260B - Quality Control

Summit Scientific

Analyte	Reporting			Spike	Source	%REC			RPD	Notes
	Result	Limit	Units	Level	Result	%REC	Limits	RPD	Limit	

Batch 1901412 - EPA 5030 Water MS

Matrix Spike Dup (1901412-MSD1)

Source: 1901351-41

Prepared: 01/31/19 Analyzed: 02/03/19

Benzene	61.2	1.0	ug/l	33.3	25.9	106	70-130	4.53	30	
Toluene	36.8	1.0	"	33.3	ND	110	70-130	1.30	30	
Ethylbenzene	41.4	1.0	"	33.3	ND	124	70-130	2.46	30	
m,p-Xylene	77.5	2.0	"	66.7	ND	116	70-130	0.630	30	
o-Xylene	38.3	1.0	"	33.3	ND	115	70-130	2.96	30	
Surrogate: 1,2-Dichloroethane-d4	14.0		"	13.3		105	23-173			
Surrogate: Toluene-d8	13.4		"	13.3		101	20-170			
Surrogate: 4-Bromofluorobenzene	12.4		"	13.3		92.9	21-167			

Summit Scientific

The results in this report apply to the samples analyzed in accordance with the chain of custody document. This analytical report must be reproduced in its entirety.



Fremont Environmental
PO Box 1289
Wellington CO, 80549

Project: Noble - Libsack R G27-15

Project Number: C013-009
Project Manager: Paul Henehan

Reported:
02/06/19 15:06

Notes and Definitions

DET Analyte DETECTED
ND Analyte NOT DETECTED at or above the reporting limit
NR Not Reported
dry Sample results reported on a dry weight basis
RPD Relative Percent Difference