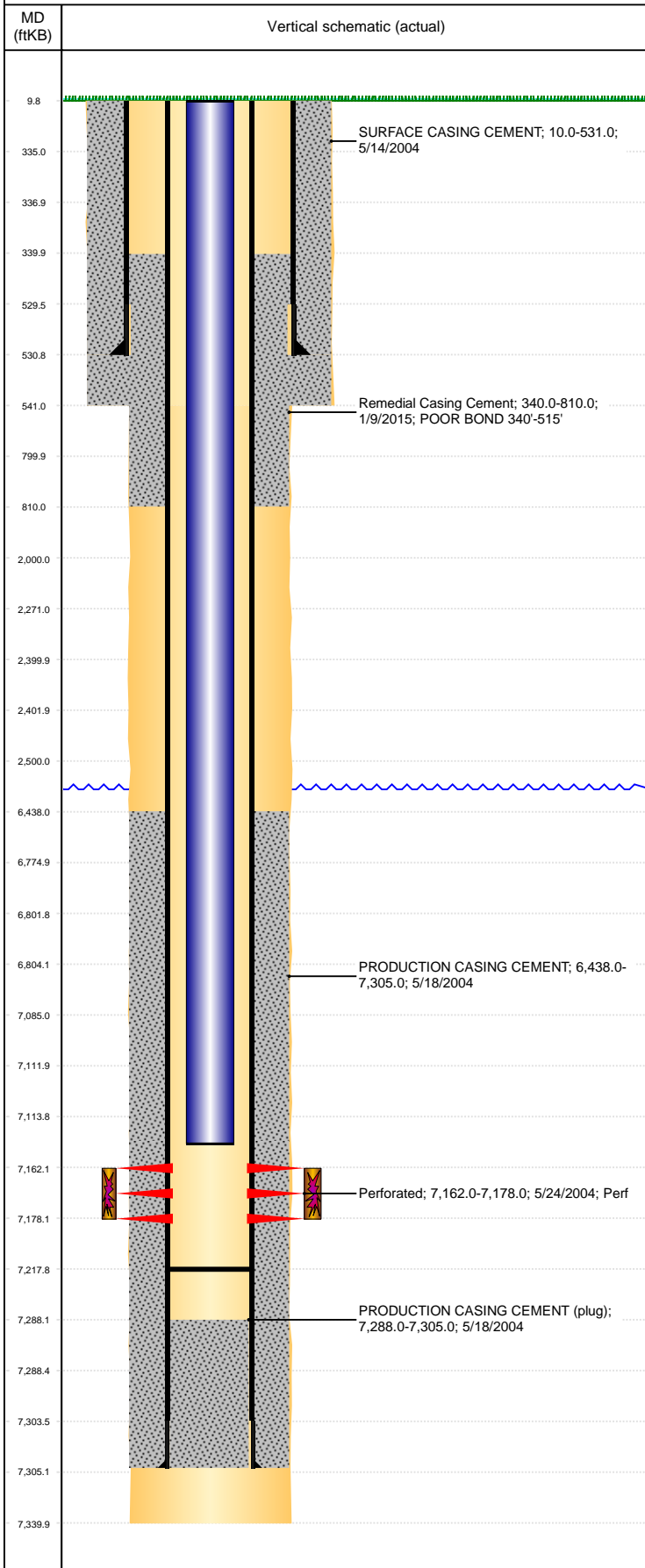


Well Name: WILLIAMS I34-13X

VERTICAL, ORIGINAL HOLE, 5/28/2019 9:44:18 AM



Well Header									
API 05-123-22105			Business Unit DJ BASIN			District 15		Well Config VERTICAL	
KB - GL / MSL (ft... 10.00		Spud Date 5/13/2004		P & A Date		Well Production Status PR			SoRT No
Comment									
Surface Location (Congressional)									
Qtr 3 SW	Qtr 4 SW	Section 34	Twnshp 6	Twنش... N	Range 66	Rng E/... W	Actual Latitude (°) 40.43887565	Actual Longitude (°) -104.77173224	
Wellbore Sections									
Section Des			Size (in)			Act Top, MD (ftKB)		Act Btm, MD (ftKB)	
SURFACE			12 1/4			10		541	
PRODUCTION			7 7/8			541		7,340	
Casing Strings									
Csg Des			Run Date		OD (in)	Wt/Len (lb/ft)	Grade	Top, MD (ftKB)	MD (ftKB)
Surface			5/13/2004		8 5/8	24.00	J-55	10.0	531.0
Production			5/17/2004		4 1/2	11.60	M-80	10.0	7,305.0
Cement									
Des					Start Date		Top (ftKB)		Btm (ftKB)
SURFACE CASING CEMENT					5/14/2004		10.0		531.0
PRODUCTION CASING CEMENT					5/18/2004		6,438.0		7,305.0
Remedial Casing Cement					1/9/2015		340.0		810.0
Zone Statuses									
Zone Name		Status Date		Status	Fluid Type		Job		Prod Method
CODELL		6/7/2004		PR	Oil				Flowing
CODELL		2/17/2010		PR	Water				Flowing
NIOBRARA		2/17/2010		PR	Water				Flowing
NIOBRARA		6/12/2015		PR					
Perforation Data									
Linked Zone			Bnch/Stg	Entered Shot Total		Top (ftKB)		Btm (ftKB)	Date
CODELL, ORIGINAL HOLE				64		7,162.00		7,178.00	5/24/2004
Stimulation Intervals									
Zone				Start Date			Top (ftKB)		Btm (ftKB)
CODELL, ORIGINAL HOLE				6/4/2004			7,162.0		7,178.0
Other In Hole									
Run Date		Des				OD (in)		Top (ftKB)	Btm (ftKB)
Logs									
Date		Type					Top, MD (ftKB)		Btm, MD (ftKB)
5/17/2004		COMPENSATED DENSITY					3,550.0		7,303.0
5/17/2004		INDUCTION					531.0		7,323.0
5/24/2004		CBL/CCL/GR					3,550.0		7,303.0
1/12/2015		CBL/CCL/GR					10.0		1,000.0
9/20/2018		GYRO					10.0		7,100.0
Plug Back Total Depths									
Date		Type			Com				Depth (ftKB)
5/24/2004		FILL			DEPTH LOGGER ON CBL				7,288.0
4/18/2012		FILL			TBG TALLY MEASUREMENT.				7,218.0