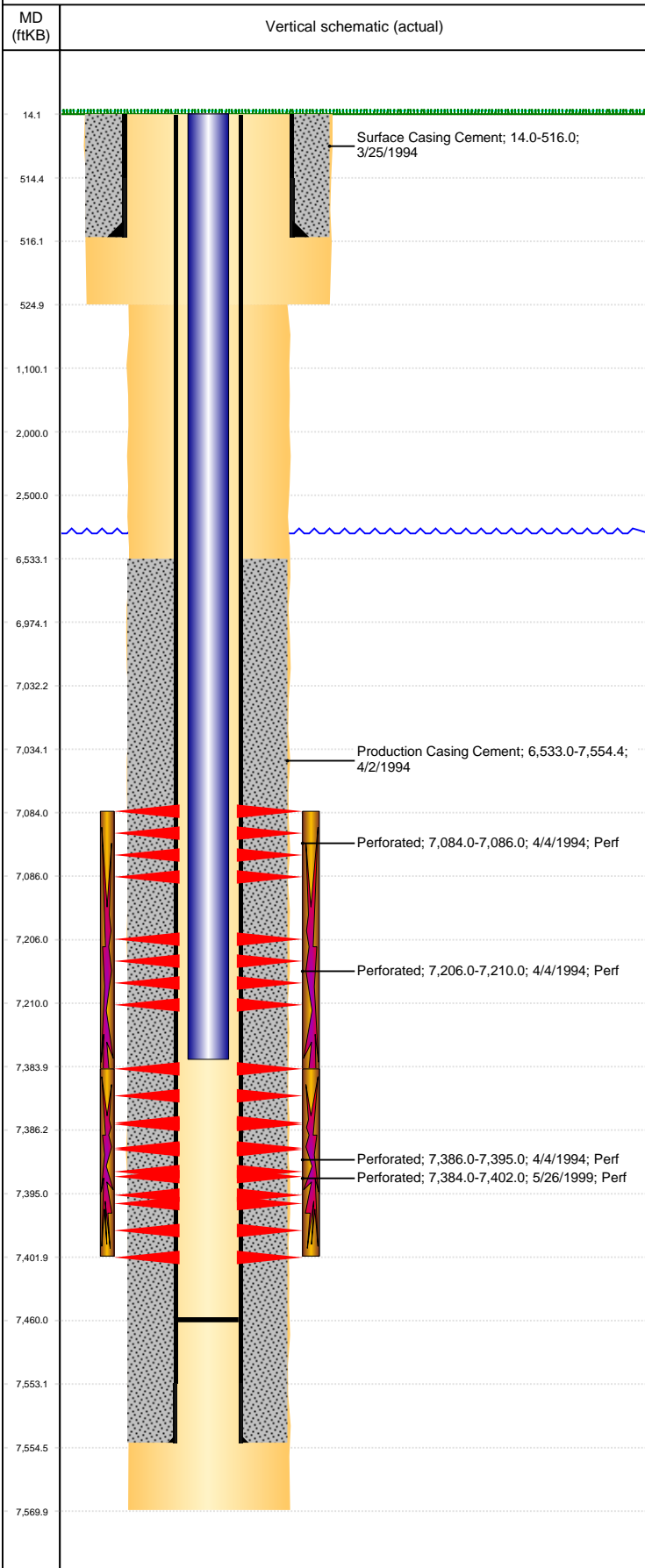


Well Name: LUNDVALL 30-11H6

VERTICAL, ORIGINAL HOLE, 5/24/2019 12:26:43 PM



Well Header									
API 05-123-18111		Business Unit DJ BASIN			District 15		Well Config VERTICAL		
KB - GL / MSL (ft... 14.00		Spud Date 3/24/1994		P & A Date		Well Production Status SI			SoRT No
Comment NO NEW DRL FRAC RPT IN WELL FILE									
SURF HOLE DISCREPANCY: COMPLETION RPT HAS 12 1/4" , DAILY DRILLING RPT HAS 11". WENT WITH ST RPT.									
WELLHEAD IS 3000#									
Surface Location (Congressional)									
Qtr 3 NE	Qtr 4 SW	Section 30	Twonshp 5	Twonsh... N	Range 66	Rng E/... W	Actual Latitude (°) 40.36831167	Actual Longitude (°) -104.82564161	
Wellbore Sections									
Section Des			Size (in)			Act Top, MD (ftKB)		Act Btm, MD (ftKB)	
SURFACE			12 1/4			14		525	
PRODUCTION			7 7/8			525		7,570	
Casing Strings									
Csg Des		Run Date		OD (in)	Wt/Len (lb/ft)	Grade	Top, MD (ftKB)	MD (ftKB)	
Surface		3/25/1994		8 5/8	23.00		14.0	516.0	
Production		4/1/1994		3 1/2	7.70	B-70	14.0	7,554.4	
Cement									
Des				Start Date		Top (ftKB)		Btm (ftKB)	
Surface Casing Cement				3/25/1994		14.0		516.0	
Production Casing Cement				4/2/1994		6,533.0		7,554.4	
Zone Statuses									
Zone Name		Status Date	Status	Fluid Type	Job			Prod Method	
CODELL		6/2/2009	PR	Water				Flowing	
CODELL		2/9/2017	SI						
NIOBRARA		6/2/2009	PR	Water				Flowing	
NIOBRARA		2/9/2017	SI						
Perforation Data									
Linked Zone		Bnch/Stg	Entered Shot Total	Top (ftKB)		Btm (ftKB)		Date	
NIOBRARA, ORIGINAL HOLE			2	7,084.00		7,086.00		4/4/1994	
NIOBRARA, ORIGINAL HOLE			4	7,206.00		7,210.00		4/4/1994	
CODELL, ORIGINAL HOLE			72	7,384.00		7,402.00		5/26/1999	
CODELL, ORIGINAL HOLE			9	7,386.00		7,395.00		4/4/1994	
Stimulation Intervals									
Zone			Start Date			Top (ftKB)		Btm (ftKB)	
NIOBRARA-CODELL, ORIGINAL HOLE			4/7/1994			7,084.0		7,395.0	
CODELL, ORIGINAL HOLE			5/28/1999			7,384.0		7,402.0	
CODELL, ORIGINAL HOLE			5/17/2006			7,384.0		7,402.0	
Other In Hole									
Run Date		Des				OD (in)	Top (ftKB)	Btm (ftKB)	
6/9/2016		Plunger Lift				1 5/8			
Logs									
Date		Type				Top, MD (ftKB)		Btm, MD (ftKB)	
4/2/1994		INDUCTION				529.0		7,569.0	
4/4/1994		CBL/CCL/GR				6,360.0		7,487.0	
Plug Back Total Depths									
Date		Type		Com				Depth (ftKB)	
5/30/1999		FILL		TAGGED FILL				7,467.0	
5/19/2006		FILL		TAGGED FILL				7,460.0	