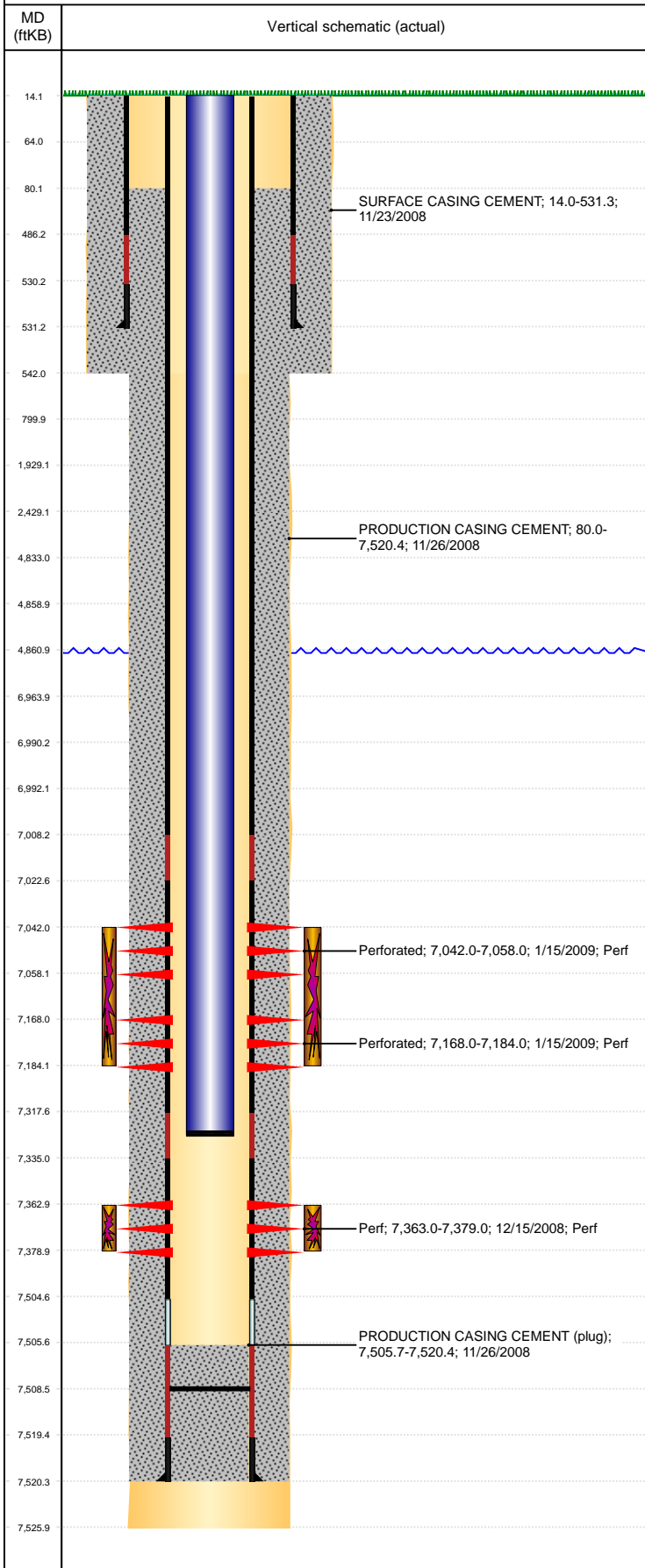


Well Name: CARLSON J33-30D

DEVIATED, Original Hole, 5/23/2019 12:39:22 PM



Well Header									
API 05-123-29308		Business Unit DJ BASIN			District 15		Well Config DEVIATED		
KB - GL / MSL (ft... 13.00		Spud Date 11/23/2008		P & A Date		Well Production Status SI		SoRT No	
Comment DIRECTIONAL WELL - 318A.e. LOCATION!!									
Surface Location (Congressional)									
Qtr 3 NE	Qtr 4 NE	Section 32	Twnshp 5	Twنش... N	Range 66	Rng E/... W	Actual Latitude (°) 40.36164195	Actual Longitude (°) -104.79594572	
Wellbore Sections									
Section Des			Size (in)			Act Top, MD (ftKB)		Act Btm, MD (ftKB)	
SURFACE			12 1/4			14		542	
PRODUCTION			7 7/8			542		7,526	
Casing Strings									
Csg Des			Run Date		OD (in)	Wt/Len (lb/ft)	Grade	Top, MD (ftKB)	MD (ftKB)
Surface			11/23/2008		8 5/8	24.00	J-55	14.0	531.3
Production			11/26/2008		4 1/2	11.60	M-80	14.0	7,520.4
Cement									
Des					Start Date		Top (ftKB)		Btm (ftKB)
SURFACE CASING CEMENT					11/23/2008		14.0		531.3
PRODUCTION CASING CEMENT					11/26/2008		80.0		7,520.4
Zone Statuses									
Zone Name	Status Date	Status	Fluid Type	Job				Prod Method	
NIOBRARA	6/2/2009	PR	Water	DRILLING/COMPLETION - ORIGINAL, 11/21/200...				Flowing	
NIOBRARA	10/7/2016	SI							
NIOBRARA	1/16/2009	PR							
CODELL	6/2/2009	PR	Water					Flowing	
Perforation Data									
Linked Zone		Bnch/Stg	Entered Shot Total	Top (ftKB)		Btm (ftKB)		Date	
NIOBRARA, Original Hole		A	32	7,042.00		7,058.00		1/15/2009	
NIOBRARA, Original Hole		B	32	7,168.00		7,184.00		1/15/2009	
CODELL, Original Hole		01	64	7,363.00		7,379.00		12/15/2008	
Stimulation Intervals									
Zone				Start Date		Top (ftKB)		Btm (ftKB)	
NIOBRARA, Original Hole				1/15/2009		7,042.0		7,184.0	
CODELL, Original Hole				1/15/2009		7,363.0		7,379.0	
Other In Hole									
Run Date		Des				OD (in)	Top (ftKB)	Btm (ftKB)	
9/16/2015		Plunger Lift				1 7/8			
Logs									
Date		Type				Top, MD (ftKB)		Btm, MD (ftKB)	
11/25/2008		Caliper/Comp. Density/Neutron/GR/SP/ML				2,640.0		7,528.0	
11/25/2008		DIL/GR/SP/Caliper				530.0		7,528.0	
12/15/2008		CBL/CCL/GR				26.0		7,497.0	
Plug Back Total Depths									
Date		Type		Com				Depth (ftKB)	
12/15/2008		FILL		THATS 123' OF RAT HOLE				7,502.0	
7/15/2009		PLUG REMNANTS						7,508.5	