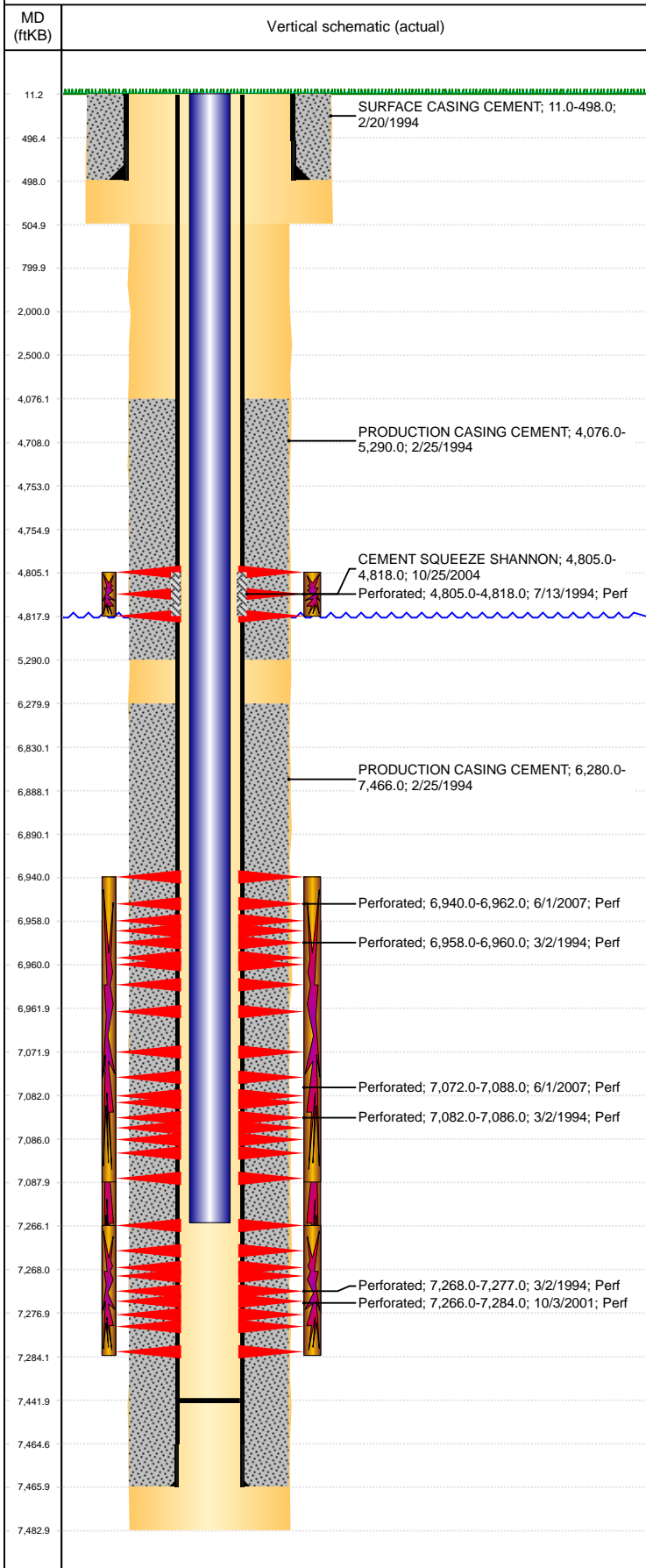


Well Name: CARLSON 32-01H6

VERTICAL, ORIGINAL HOLE, 5/23/2019 12:08:16 PM



Well Header									
API 05-123-18030		Business Unit DJ BASIN			District 15		Well Config VERTICAL		
KB - GL / MSL (ft... 11.00		Spud Date 2/20/1994		P & A Date		Well Production Status SI			SoRT No
Comment NO FRAC DETAIL IN DRILLING RPTS. USED TREATMENT RPT IN WELL FILE FOR FRAC DATE. LIMITED ENTRY									
Surface Location (Congressional)									
Qtr 3 NE	Qtr 4 NE	Section 32	Twnshp 5	Twnsh... N	Range 66	Rng E/... W	Actual Latitude (°) 40.36151702		Actual Longitude (°) -104.79594650
Wellbore Sections									
Section Des		Size (in)			Act Top, MD (ftKB)		Act Btm, MD (ftKB)		
SURFACE		12 1/4			11		505		
PRODUCTION		7 7/8			505		7,483		
Casing Strings									
Csg Des		Run Date		OD (in)	Wt/Len (lb/ft)	Grade	Top, MD (ftKB)	MD (ftKB)	
Surface		2/20/1994		8 5/8		J-55	11.0	498.0	
Production		2/25/1994		3 1/2	7.70	B-70	11.0	7,466.0	
Cement									
Des				Start Date		Top (ftKB)		Btm (ftKB)	
SURFACE CASING CEMENT				2/20/1994		11.0		498.0	
PRODUCTION CASING CEMENT				2/25/1994		4,076.0		5,290.0	
PRODUCTION CASING CEMENT				2/25/1994		6,280.0		7,466.0	
CEMENT SQUEEZE SHANNON				10/25/2004		4,805.0		4,818.0	
Zone Statuses									
Zone Name	Status Date	Status	Fluid Type	Job				Prod Method	
CODELL	10/5/2009	PR	Water	RECOMPLETION, 7/19/1994 00:00 TRI-FRAC, 10/29/2004 00:00 DRILLING/COMPLETION - ORIGINAL, 2/20/1994...				Flowing	
CODELL	10/27/2016	SI							
SHANNON	8/1/1994	PR							
SHANNON	10/25/2004	SI							
NIOBRARA	3/16/1994	PR		RE-FRAC, 6/20/2007 00:00				Flowing	
NIOBRARA	6/27/2007	PR						Flowing	
Perforation Data									
Linked Zone		Bnch/Stg	Entered Shot Total	Top (ftKB)		Btm (ftKB)		Date	
SHANNON, ORIGINAL HOLE		A	56	4,805.00		4,818.00		7/13/1994	
NIOBRARA, ORIGINAL HOLE			88	6,940.00		6,962.00		6/1/2007	
NIOBRARA, ORIGINAL HOLE			2	6,958.00		6,960.00		3/2/1994	
NIOBRARA, ORIGINAL HOLE		B	64	7,072.00		7,088.00		6/1/2007	
NIOBRARA, ORIGINAL HOLE			4	7,082.00		7,086.00		3/2/1994	
CODELL, ORIGINAL HOLE			68	7,266.00		7,284.00		10/3/2001	
CODELL, ORIGINAL HOLE			9	7,268.00		7,277.00		3/2/1994	
Stimulation Intervals									
Zone			Start Date			Top (ftKB)		Btm (ftKB)	
SHANNON, ORIGINAL HOLE			7/19/1994			4,805.0		4,818.0	
NIOBRARA, ORIGINAL HOLE			6/20/2007			6,940.0		7,088.0	
NIOBRARA-CODELL, ORIGINAL HOLE			3/3/1994			6,958.0		7,277.0	
CODELL, ORIGINAL HOLE			10/8/2001			7,266.0		7,284.0	
CODELL, ORIGINAL HOLE			10/29/2004			7,266.0		7,284.0	
Other In Hole									
Run Date		Des				OD (in)	Top (ftKB)	Btm (ftKB)	
Logs									
Date		Type				Top, MD (ftKB)		Btm, MD (ftKB)	
2/25/1994		COMPENSATED DENSITY				2,500.0		7,470.0	
2/25/1994		INDUCTION				500.0		7,471.0	
3/3/1994		CEMENT BOND				3,920.0		7,419.0	
Plug Back Total Depths									
Date		Type		Com				Depth (ftKB)	
3/3/1994		FILL		DEPTH LOGGER ON CBL				7,423.0	
6/26/2007		FILL		LAST CLEANOUT 7442				7,442.0	