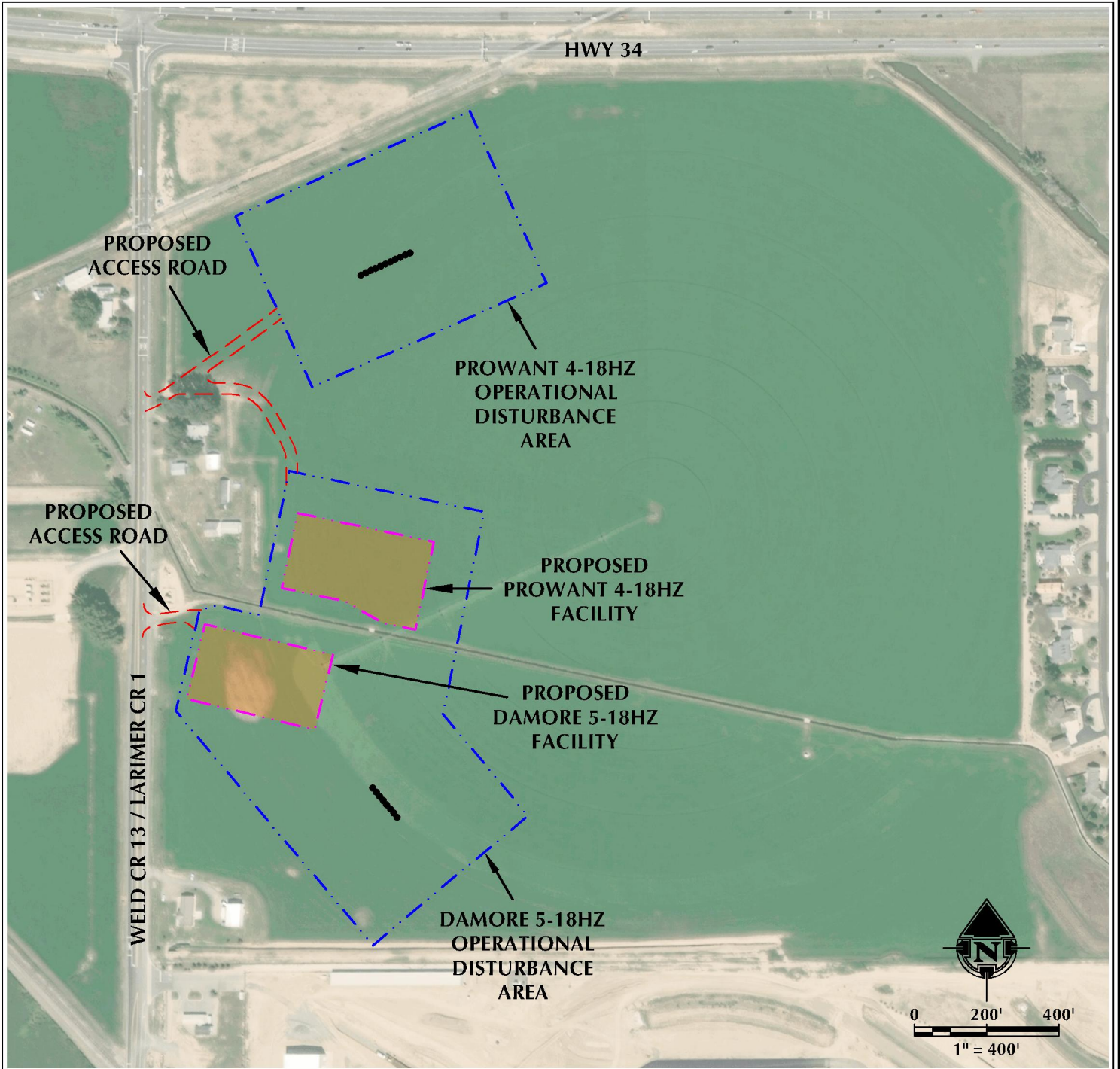


# DAMORE 5-18HZ ACCESS MAP

W1/2 NW1/4 SECTION 18, TOWNSHIP 5 NORTH, RANGE 67 WEST, 6TH P.M.



## LEGEND

- PROPOSED WELL
- - - ACCESS
- - - - - DISTURBANCE AREA
- PROPOSED FACILITY

INTERSECTION OF NORTHERN ACCESS  
ROAD AND WELD CR 13 / LARIMER CR 1

LATITUDE: 40.403946°  
LONGITUDE: -104.944565°

INTERSECTION OF SOUTHERN ACCESS  
ROAD AND WELD CR 13 / LARIMER CR 1

LATITUDE: 40.402306°  
LONGITUDE: -104.944620°



**609 CONSULTING, LLC**  
LOVELAND OFFICE  
6706 North Franklin Avenue  
Loveland, Colorado 80538  
Phone: 970-776-4331

SHERIDAN OFFICE  
1095 Saberton Avenue  
Sheridan, Wyoming 82801  
Phone: 307-674-0609

DATE SURVEYED: 9/7/18  
DATE: 10/11/18  
DRAFTER: DJD  
REVISED: 5/22/19

DATA SOURCES:  
- AERIAL COURTESY OF ESRI, INC.

PREPARED FOR:  
**Kerr-McGee Oil & Gas Onshore L.P.**