

PETROLEUM DEVELOPMENT CORP Weld County CO

Well Name: **LaSalle 25G-402**

Surface Location: LaSalle 25F-HZ Pad Sec.25-T5N-R65W
North American Datum 1983 , US State Plane 1983 , Colorado Northern Zone

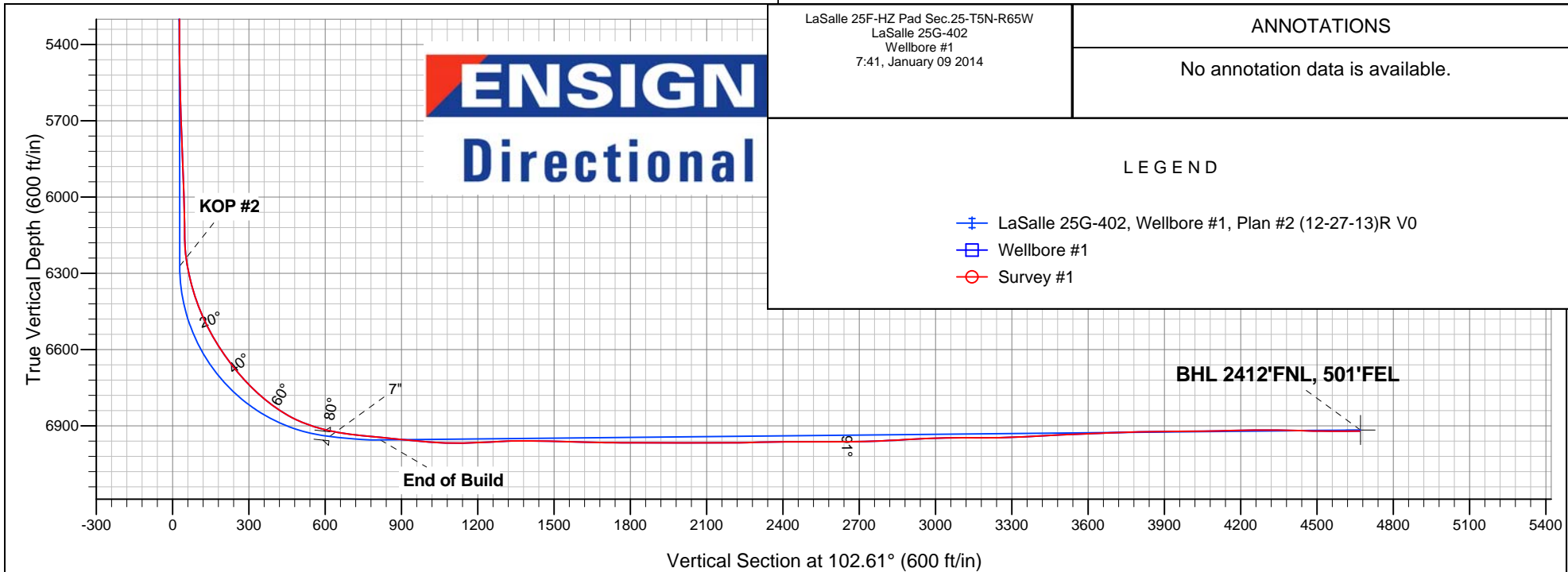
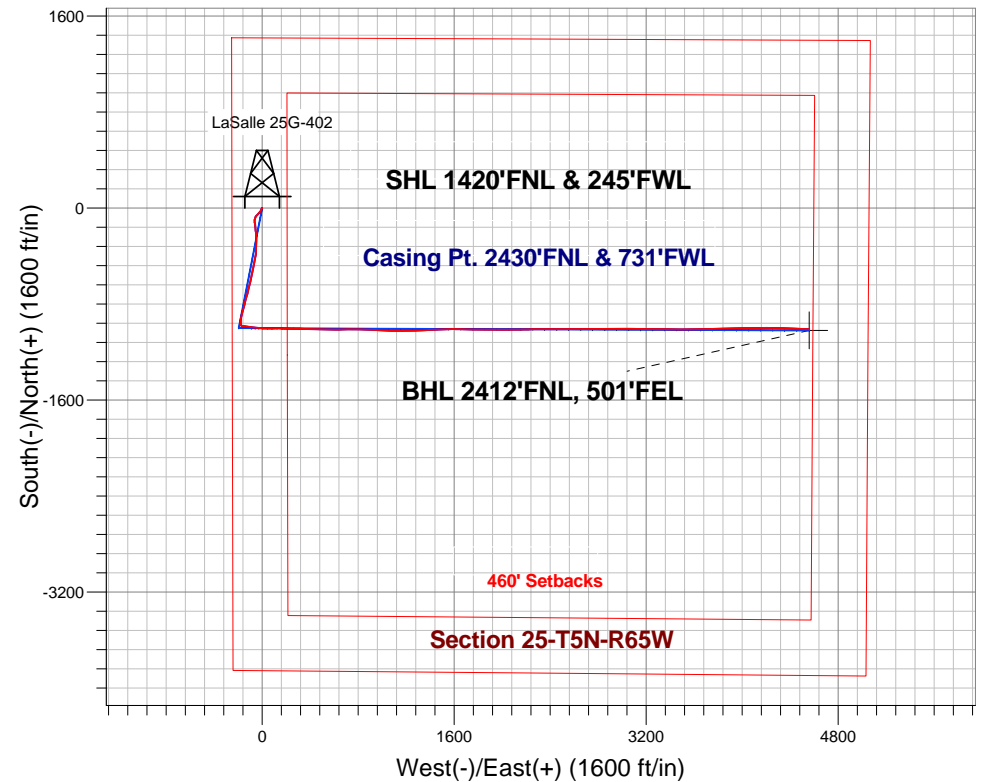
Ground Elevation: 4640.0

+N/-S	+E/-W	Northing	Easting	Latitude	Longitude	Slot
0.0	0.0	1380140.87	3245133.35	40.373550	-104.620170	

RKB - 15' WELL @ 4655.0ft (RKB - 15')

FINAL SURVEY

Projected Bottom Hole Location
11435' MD 6920' TVD 1011' S & 4558' E of SHL
90.5 degree Incl @ 92.8 degree AZM



LaSalle 25F-HZ Pad Sec.25-T5N-R65W
LaSalle 25G-402
Wellbore #1
7:41, January 09 2014

ANNOTATIONS

No annotation data is available.

LEGEND

- LaSalle 25G-402, Wellbore #1, Plan #2 (12-27-13)R V0
- Wellbore #1
- Survey #1



PETROLEUM DEVELOPMENT CORP Weld County CO

SEC.25-T5N-R65W

LaSalle 25F-HZ Pad Sec.25-T5N-R65W

LaSalle 25G-402

Wellbore #1

Survey: Survey #1

Standard Survey Report

09 January, 2014

Survey										
	Measured Depth (ft)	Inclination (°)	Azimuth (°)	Vertical Depth (ft)	+N-S (ft)	+E-W (ft)	Vertical Section (ft)	Dogleg Rate (°/100ft)	Build Rate (°/100ft)	Turn Rate (°/100ft)
	0.0	0.00	0.00	0.0	0.0	0.0	0.0	0.00	0.00	0.00
	125.0	0.20	288.10	125.0	0.1	-0.2	-0.2	0.16	0.16	0.00
	219.0	1.50	244.20	219.0	-0.4	-1.5	-1.3	1.45	1.38	-46.70
	315.0	1.70	210.20	315.0	-2.2	-3.3	-2.8	0.99	0.21	-35.42
	409.0	3.70	194.10	408.8	-6.3	-4.8	-3.3	2.25	2.13	-17.13
	504.0	4.70	199.30	503.6	-13.0	-6.8	-3.8	1.13	1.05	5.47
	598.0	5.70	207.80	597.2	-20.8	-10.2	-5.5	1.34	1.06	9.04
	693.0	7.10	218.70	691.6	-29.5	-16.1	-9.3	1.95	1.47	11.47
	788.0	7.80	223.40	785.8	-38.8	-24.2	-15.2	0.98	0.74	4.95
	888.0	9.00	224.10	884.7	-49.3	-34.3	-22.7	1.20	1.20	0.70
	943.0	9.10	224.10	939.1	-55.5	-40.3	-27.2	0.18	0.18	0.00
	975.0	9.10	224.70	970.6	-59.2	-43.9	-29.9	0.30	0.00	1.88

Company:	PETROLEUM DEVELOPMENT CORP Weld County CO	Local Co-ordinate Reference:	Well LaSalle 25G-402
Project:	SEC.25-T5N-R65W	TVD Reference:	WELL @ 4655.0ft (RKB - 15')
Site:	LaSalle 25F-HZ Pad Sec.25-T5N-R65W	MD Reference:	WELL @ 4655.0ft (RKB - 15')
Well:	LaSalle 25G-402	North Reference:	True
Wellbore:	Wellbore #1	Survey Calculation Method:	Minimum Curvature
Design:	Wellbore #1	Database:	Landmark

Survey									
Measured Depth (ft)	Inclination (°)	Azimuth (°)	Vertical Depth (ft)	+N/-S (ft)	+E/-W (ft)	Vertical Section (ft)	Dogleg Rate (°/100ft)	Build Rate (°/100ft)	Turn Rate (°/100ft)
1,069.0	11.60	210.60	1,063.1	-72.6	-53.9	-36.8	3.77	2.66	-15.00
1,163.0	12.70	193.00	1,155.0	-90.8	-61.1	-39.8	4.09	1.17	-18.72
1,255.0	13.10	176.70	1,244.8	-111.1	-62.7	-37.0	3.97	0.43	-17.72
1,350.0	10.00	171.60	1,337.8	-130.0	-60.9	-31.1	3.43	-3.26	-5.37
1,442.0	9.50	172.10	1,428.5	-145.4	-58.7	-25.6	0.55	-0.54	0.54
1,502.0	11.60	173.30	1,487.5	-156.3	-57.3	-21.8	3.52	3.50	2.00
1,563.0	13.00	173.70	1,547.1	-169.2	-55.8	-17.6	2.30	2.30	0.66
1,624.0	13.50	175.80	1,606.5	-183.1	-54.6	-13.3	1.14	0.82	3.44
1,716.0	11.70	171.60	1,696.2	-203.1	-52.4	-6.8	2.19	-1.96	-4.57
1,805.0	10.50	175.30	1,783.6	-220.1	-50.4	-1.2	1.57	-1.35	4.16
1,896.0	8.10	175.60	1,873.4	-234.7	-49.3	3.2	2.64	-2.64	0.33
1,988.0	9.20	177.00	1,964.3	-248.5	-48.4	7.0	1.22	1.20	1.52
2,080.0	10.40	183.50	2,055.0	-264.2	-48.5	10.3	1.77	1.30	7.07
2,171.0	11.40	185.60	2,144.3	-281.3	-49.9	12.7	1.18	1.10	2.31
2,293.0	11.20	180.40	2,264.0	-305.2	-51.1	16.7	0.85	-0.16	-4.26
2,415.0	12.00	180.00	2,383.5	-329.7	-51.2	22.0	0.66	0.66	-0.33
2,540.0	12.60	179.50	2,505.6	-356.3	-51.1	27.9	0.49	0.48	-0.40
2,667.0	12.00	188.30	2,629.7	-383.2	-52.9	32.0	1.55	-0.47	6.93
2,794.0	12.80	193.90	2,753.7	-410.0	-58.2	32.7	1.14	0.63	4.41
2,920.0	13.00	190.90	2,876.6	-437.4	-64.2	32.8	0.55	0.16	-2.38
3,047.0	12.00	186.70	3,000.6	-464.6	-68.5	34.6	1.06	-0.79	-3.31
3,173.0	11.20	190.70	3,124.0	-489.6	-72.3	36.4	0.90	-0.63	3.17
3,300.0	11.10	192.30	3,248.6	-513.7	-77.2	36.8	0.26	-0.08	1.26
3,427.0	11.20	190.00	3,373.2	-537.8	-81.9	37.5	0.36	0.08	-1.81
3,553.0	9.90	194.40	3,497.1	-560.3	-86.7	37.7	1.21	-1.03	3.49
3,680.0	11.50	194.80	3,621.9	-583.1	-92.7	36.9	1.26	1.26	0.31
3,807.0	12.00	193.90	3,746.2	-608.2	-99.1	36.1	0.42	0.39	-0.71
3,934.0	12.00	191.10	3,870.4	-633.9	-104.8	36.1	0.46	0.00	-2.20
4,060.0	11.10	195.30	3,993.9	-658.5	-110.5	35.9	0.98	-0.71	3.33
4,187.0	10.80	192.70	4,118.6	-681.9	-116.4	35.3	0.45	-0.24	-2.05
4,282.0	11.40	189.70	4,211.8	-699.8	-119.9	35.8	0.88	0.63	-3.16
4,377.0	11.70	196.90	4,304.9	-718.3	-124.3	35.5	1.55	0.32	7.58
4,504.0	12.00	197.60	4,429.2	-743.2	-132.0	33.4	0.26	0.24	0.55
4,631.0	10.50	194.80	4,553.7	-767.0	-139.0	31.8	1.26	-1.18	-2.20
4,757.0	9.90	193.90	4,677.7	-788.6	-144.5	31.1	0.49	-0.48	-0.71
4,853.0	10.30	193.00	4,772.2	-805.0	-148.4	30.9	0.45	0.42	-0.94
4,948.0	10.30	193.90	4,865.7	-821.5	-152.4	30.6	0.17	0.00	0.95
5,011.0	11.10	192.10	4,927.6	-832.9	-155.0	30.6	1.38	1.27	-2.86
5,139.0	12.30	195.10	5,052.9	-858.1	-161.1	30.1	1.05	0.94	2.34
5,266.0	10.80	198.60	5,177.4	-882.4	-168.4	28.2	1.30	-1.18	2.76
5,393.0	8.90	192.00	5,302.5	-903.3	-174.3	27.1	1.74	-1.50	-5.20
5,519.0	7.40	190.00	5,427.2	-920.9	-177.7	27.6	1.21	-1.19	-1.59
5,646.0	6.90	182.10	5,553.2	-936.5	-179.4	29.3	0.87	-0.39	-6.22
5,773.0	7.20	177.90	5,679.3	-952.1	-179.4	32.8	0.47	0.24	-3.31
5,900.0	6.30	170.70	5,805.4	-966.9	-178.0	37.4	0.97	-0.71	-5.67
5,995.0	4.50	157.70	5,900.0	-975.5	-175.7	41.5	2.28	-1.89	-13.68
6,090.0	2.30	157.30	5,994.8	-980.7	-173.6	44.7	2.32	-2.32	-0.42
6,186.0	1.10	133.90	6,090.8	-983.2	-172.2	46.6	1.42	-1.25	-24.38
6,217.0	1.10	136.60	6,121.7	-983.6	-171.7	47.1	0.17	0.00	8.71
6,249.0	1.30	140.30	6,153.7	-984.1	-171.3	47.6	0.67	0.63	11.56
6,281.0	2.80	96.00	6,185.7	-984.4	-170.3	48.7	6.49	4.69	-138.44
6,312.0	5.80	80.00	6,216.6	-984.3	-168.0	50.9	10.33	9.68	-51.61
6,344.0	8.40	86.80	6,248.4	-983.8	-164.1	54.6	8.53	8.13	21.25

Company:	PETROLEUM DEVELOPMENT CORP Weld County CO	Local Co-ordinate Reference:	Well LaSalle 25G-402
Project:	SEC.25-T5N-R65W	TVD Reference:	WELL @ 4655.0ft (RKB - 15')
Site:	LaSalle 25F-HZ Pad Sec.25-T5N-R65W	MD Reference:	WELL @ 4655.0ft (RKB - 15')
Well:	LaSalle 25G-402	North Reference:	True
Wellbore:	Wellbore #1	Survey Calculation Method:	Minimum Curvature
Design:	Wellbore #1	Database:	Landmark

Survey									
Measured Depth (ft)	Inclination (°)	Azimuth (°)	Vertical Depth (ft)	+N/-S (ft)	+E/-W (ft)	Vertical Section (ft)	Dogleg Rate (°/100ft)	Build Rate (°/100ft)	Turn Rate (°/100ft)
6,376.0	11.30	93.20	6,279.9	-983.9	-158.6	60.0	9.67	9.06	20.00
6,408.0	13.50	98.80	6,311.2	-984.6	-151.8	66.8	7.83	6.88	17.50
6,440.0	14.70	103.00	6,342.2	-986.1	-144.1	74.6	4.93	3.75	13.13
6,471.0	16.30	99.50	6,372.1	-987.7	-136.0	82.9	5.98	5.16	-11.29
6,503.0	18.20	96.00	6,402.6	-989.0	-126.6	92.3	6.76	5.94	-10.94
6,535.0	21.00	95.30	6,432.8	-990.0	-115.9	103.0	8.78	8.75	-2.19
6,566.0	23.90	95.80	6,461.4	-991.2	-104.1	114.7	9.38	9.35	1.61
6,598.0	26.20	96.90	6,490.4	-992.7	-90.7	128.2	7.33	7.19	3.44
6,629.0	27.90	97.60	6,518.0	-994.5	-76.7	142.2	5.58	5.48	2.26
6,661.0	29.40	97.40	6,546.1	-996.5	-61.5	157.5	4.70	4.69	-0.63
6,693.0	31.20	95.30	6,573.7	-998.2	-45.4	173.6	6.53	5.63	-6.56
6,725.0	33.70	93.90	6,600.7	-999.6	-28.3	190.5	8.16	7.81	-4.38
6,756.0	35.70	94.00	6,626.2	-1,000.8	-10.7	208.0	6.45	6.45	0.32
6,788.0	37.50	93.90	6,651.9	-1,002.1	8.3	226.9	5.63	5.63	-0.31
6,820.0	39.60	92.30	6,676.9	-1,003.2	28.2	246.5	7.26	6.56	-5.00
6,851.0	41.90	89.50	6,700.4	-1,003.5	48.4	266.3	9.48	7.42	-9.03
6,883.0	43.60	88.20	6,723.9	-1,003.1	70.2	287.4	5.99	5.31	-4.06
6,915.0	45.50	89.10	6,746.7	-1,002.6	92.6	309.2	6.26	5.94	2.81
6,947.0	48.00	90.00	6,768.6	-1,002.4	115.9	331.9	8.08	7.81	2.81
6,978.0	50.50	91.20	6,788.9	-1,002.6	139.4	354.9	8.58	8.06	3.87
7,010.0	52.90	91.90	6,808.7	-1,003.3	164.5	379.5	7.69	7.50	2.19
7,041.0	55.10	92.80	6,826.9	-1,004.3	189.5	404.2	7.48	7.10	2.90
7,073.0	57.60	92.60	6,844.7	-1,005.6	216.2	430.4	7.83	7.81	-0.63
7,105.0	61.50	91.80	6,860.9	-1,006.7	243.7	457.6	12.38	12.19	-2.50
7,137.0	65.20	91.60	6,875.2	-1,007.5	272.3	485.6	11.58	11.56	-0.63
7,168.0	68.80	91.10	6,887.3	-1,008.2	300.8	513.6	11.71	11.61	-1.61
7,200.0	71.50	90.90	6,898.2	-1,008.7	330.9	543.1	8.46	8.44	-0.63
7,232.0	73.90	90.40	6,907.7	-1,009.0	361.5	573.0	7.65	7.50	-1.56
7,264.0	76.50	90.40	6,915.9	-1,009.3	392.4	603.2	8.13	8.13	0.00
7,295.0	78.90	90.20	6,922.5	-1,009.4	422.7	632.8	7.77	7.74	-0.65
7,325.0	80.90	90.40	6,927.8	-1,009.6	452.2	661.7	6.70	6.67	0.67
7,359.0	83.10	92.10	6,932.5	-1,010.3	485.9	694.7	8.15	6.47	5.00
7,390.0	84.10	91.90	6,935.9	-1,011.4	516.7	725.0	3.29	3.23	-0.65
7,421.0	84.30	91.40	6,939.1	-1,012.3	547.5	755.2	1.73	0.65	-1.61
7,451.0	84.30	90.50	6,942.1	-1,012.8	577.3	784.5	2.99	0.00	-3.00
7,481.0	84.00	89.50	6,945.1	-1,012.8	607.2	813.6	3.46	-1.00	-3.33
7,512.0	84.20	89.30	6,948.3	-1,012.4	638.0	843.6	0.91	0.65	-0.65
7,542.0	84.70	89.30	6,951.2	-1,012.1	667.9	872.7	1.67	1.67	0.00
7,573.0	85.00	89.30	6,954.0	-1,011.7	698.7	902.7	0.97	0.97	0.00
7,603.0	85.00	88.90	6,956.6	-1,011.2	728.6	931.8	1.33	0.00	-1.33
7,634.0	84.90	89.30	6,959.3	-1,010.7	759.5	961.8	1.33	-0.32	1.29
7,664.0	85.10	90.40	6,961.9	-1,010.7	789.4	991.0	3.71	0.67	3.67
7,696.0	86.10	91.20	6,964.4	-1,011.1	821.3	1,022.2	4.00	3.13	2.50
7,728.0	87.60	91.80	6,966.2	-1,011.9	853.2	1,053.5	5.05	4.69	1.88
7,759.0	88.50	92.80	6,967.2	-1,013.2	884.2	1,084.0	4.34	2.90	3.23
7,791.0	89.80	93.50	6,967.7	-1,015.0	916.1	1,115.6	4.61	4.06	2.19
7,823.0	91.10	93.90	6,967.4	-1,017.0	948.1	1,147.2	4.25	4.06	1.25
7,855.0	91.90	92.80	6,966.6	-1,018.9	980.0	1,178.8	4.25	2.50	-3.44
7,886.0	92.50	92.10	6,965.4	-1,020.2	1,010.9	1,209.3	2.97	1.94	-2.26
7,918.0	92.90	91.60	6,963.9	-1,021.2	1,042.9	1,240.7	2.00	1.25	-1.56
7,950.0	93.00	91.40	6,962.2	-1,022.1	1,074.8	1,272.0	0.70	0.31	-0.63
7,981.0	92.70	90.90	6,960.7	-1,022.7	1,105.8	1,302.4	1.88	-0.97	-1.61
8,013.0	91.40	90.40	6,959.6	-1,023.1	1,137.8	1,333.6	4.35	-4.06	-1.56
8,045.0	90.20	89.50	6,959.1	-1,023.0	1,169.8	1,364.9	4.69	-3.75	-2.81

Company:	PETROLEUM DEVELOPMENT CORP Weld County CO	Local Co-ordinate Reference:	Well LaSalle 25G-402
Project:	SEC.25-T5N-R65W	TVD Reference:	WELL @ 4655.0ft (RKB - 15')
Site:	LaSalle 25F-HZ Pad Sec.25-T5N-R65W	MD Reference:	WELL @ 4655.0ft (RKB - 15')
Well:	LaSalle 25G-402	North Reference:	True
Wellbore:	Wellbore #1	Survey Calculation Method:	Minimum Curvature
Design:	Wellbore #1	Database:	Landmark

Survey									
Measured Depth (ft)	Inclination (°)	Azimuth (°)	Vertical Depth (ft)	+N/-S (ft)	+E/-W (ft)	Vertical Section (ft)	Dogleg Rate (°/100ft)	Build Rate (°/100ft)	Turn Rate (°/100ft)
8,076.0	90.00	89.30	6,959.1	-1,022.7	1,200.8	1,395.0	0.91	-0.65	-0.65
8,108.0	89.70	89.10	6,959.1	-1,022.3	1,232.8	1,426.2	1.13	-0.94	-0.63
8,140.0	89.10	88.20	6,959.5	-1,021.5	1,264.7	1,457.2	3.38	-1.88	-2.81
8,172.0	88.10	87.50	6,960.3	-1,020.3	1,296.7	1,488.2	3.81	-3.13	-2.19
8,203.0	88.10	87.40	6,961.3	-1,018.9	1,327.7	1,518.1	0.32	0.00	-0.32
8,235.0	88.70	87.20	6,962.2	-1,017.4	1,359.6	1,548.9	1.98	1.88	-0.63
8,267.0	89.00	87.20	6,962.8	-1,015.9	1,391.6	1,579.8	0.94	0.94	0.00
8,298.0	89.00	87.20	6,963.4	-1,014.3	1,422.5	1,609.6	0.00	0.00	0.00
8,330.0	88.30	87.90	6,964.1	-1,013.0	1,454.5	1,640.5	3.09	-2.19	2.19
8,361.0	88.30	87.90	6,965.0	-1,011.8	1,485.5	1,670.5	0.00	0.00	0.00
8,393.0	89.00	88.10	6,965.8	-1,010.7	1,517.4	1,701.5	2.27	2.19	0.63
8,425.0	89.80	88.20	6,966.1	-1,009.7	1,549.4	1,732.4	2.52	2.50	0.31
8,457.0	89.90	89.50	6,966.2	-1,009.1	1,581.4	1,763.5	4.07	0.31	4.06
8,488.0	89.90	90.90	6,966.3	-1,009.2	1,612.4	1,793.8	4.52	0.00	4.52
8,520.0	90.00	91.10	6,966.3	-1,009.7	1,644.4	1,825.1	0.70	0.31	0.63
8,552.0	89.90	91.10	6,966.3	-1,010.3	1,676.4	1,856.5	0.31	-0.31	0.00
8,584.0	89.70	91.10	6,966.4	-1,010.9	1,708.4	1,887.9	0.63	-0.63	0.00
8,615.0	89.60	91.10	6,966.6	-1,011.5	1,739.4	1,918.2	0.32	-0.32	0.00
8,647.0	89.80	90.90	6,966.8	-1,012.1	1,771.4	1,949.6	0.88	0.63	-0.63
8,679.0	89.90	90.90	6,966.9	-1,012.6	1,803.4	1,980.9	0.31	0.31	0.00
8,711.0	90.10	90.90	6,966.9	-1,013.1	1,835.4	2,012.3	0.63	0.63	0.00
8,742.0	90.20	90.50	6,966.8	-1,013.5	1,866.4	2,042.6	1.33	0.32	-1.29
8,774.0	90.20	90.50	6,966.7	-1,013.8	1,898.4	2,073.9	0.00	0.00	0.00
8,806.0	90.20	90.20	6,966.6	-1,014.0	1,930.4	2,105.1	0.94	0.00	-0.94
8,837.0	90.00	90.00	6,966.5	-1,014.0	1,961.4	2,135.4	0.91	-0.65	-0.65
8,869.0	90.00	89.80	6,966.5	-1,014.0	1,993.4	2,166.6	0.63	0.00	-0.63
8,901.0	90.00	89.70	6,966.5	-1,013.8	2,025.4	2,197.8	0.31	0.00	-0.31
8,932.0	90.90	89.70	6,966.3	-1,013.7	2,056.4	2,228.0	2.90	2.90	0.00
8,964.0	91.30	89.70	6,965.7	-1,013.5	2,088.4	2,259.2	1.25	1.25	0.00
8,996.0	91.50	89.50	6,964.9	-1,013.3	2,120.3	2,290.4	0.88	0.63	-0.63
9,028.0	91.10	88.90	6,964.2	-1,012.8	2,152.3	2,321.5	2.25	-1.25	-1.88
9,059.0	90.90	88.80	6,963.6	-1,012.2	2,183.3	2,351.6	0.72	-0.65	-0.32
9,091.0	91.00	88.80	6,963.1	-1,011.5	2,215.3	2,382.7	0.31	0.31	0.00
9,123.0	90.70	88.20	6,962.6	-1,010.7	2,247.3	2,413.7	2.10	-0.94	-1.88
9,155.0	90.50	87.70	6,962.3	-1,009.5	2,279.3	2,444.7	1.68	-0.63	-1.56
9,187.0	90.10	88.40	6,962.1	-1,008.5	2,311.3	2,475.6	2.52	-1.25	2.19
9,219.0	89.60	89.70	6,962.2	-1,007.9	2,343.2	2,506.8	4.35	-1.56	4.06
9,250.0	89.70	90.20	6,962.4	-1,007.9	2,374.2	2,537.0	1.64	0.32	1.61
9,282.0	89.50	90.50	6,962.6	-1,008.1	2,406.2	2,568.3	1.13	-0.63	0.94
9,314.0	89.40	90.50	6,962.9	-1,008.4	2,438.2	2,599.6	0.31	-0.31	0.00
9,345.0	90.60	90.70	6,962.9	-1,008.7	2,469.2	2,629.9	3.92	3.87	0.65
9,377.0	91.10	90.70	6,962.4	-1,009.1	2,501.2	2,661.2	1.56	1.56	0.00
9,409.0	90.80	90.00	6,961.9	-1,009.3	2,533.2	2,692.5	2.38	-0.94	-2.19
9,440.0	91.10	89.80	6,961.4	-1,009.2	2,564.2	2,722.7	1.16	0.97	-0.65
9,472.0	92.00	90.20	6,960.5	-1,009.2	2,596.2	2,753.9	3.08	2.81	1.25
9,504.0	92.60	90.20	6,959.2	-1,009.3	2,628.2	2,785.1	1.88	1.88	0.00
9,535.0	92.80	90.00	6,957.8	-1,009.4	2,659.2	2,815.4	0.91	0.65	-0.65
9,567.0	92.90	89.80	6,956.2	-1,009.3	2,691.1	2,846.5	0.70	0.31	-0.63
9,599.0	93.10	89.80	6,954.5	-1,009.2	2,723.1	2,877.7	0.63	0.63	0.00
9,630.0	93.50	89.70	6,952.7	-1,009.1	2,754.0	2,907.9	1.33	1.29	-0.32
9,662.0	93.60	89.30	6,950.7	-1,008.8	2,786.0	2,939.0	1.29	0.31	-1.25
9,694.0	92.40	89.10	6,949.1	-1,008.4	2,817.9	2,970.1	3.80	-3.75	-0.63
9,726.0	90.70	89.10	6,948.2	-1,007.9	2,849.9	3,001.2	5.31	-5.31	0.00

Company:	PETROLEUM DEVELOPMENT CORP Weld County CO	Local Co-ordinate Reference:	Well LaSalle 25G-402
Project:	SEC.25-T5N-R65W	TVD Reference:	WELL @ 4655.0ft (RKB - 15')
Site:	LaSalle 25F-HZ Pad Sec.25-T5N-R65W	MD Reference:	WELL @ 4655.0ft (RKB - 15')
Well:	LaSalle 25G-402	North Reference:	True
Wellbore:	Wellbore #1	Survey Calculation Method:	Minimum Curvature
Design:	Wellbore #1	Database:	Landmark

Survey									
Measured Depth (ft)	Inclination (°)	Azimuth (°)	Vertical Depth (ft)	+N/-S (ft)	+E/-W (ft)	Vertical Section (ft)	Dogleg Rate (°/100ft)	Build Rate (°/100ft)	Turn Rate (°/100ft)
9,758.0	90.80	88.90	6,947.8	-1,007.3	2,881.9	3,032.3	0.70	0.31	-0.63
9,790.0	91.30	88.90	6,947.2	-1,006.7	2,913.9	3,063.3	1.56	1.56	0.00
9,822.0	90.90	89.70	6,946.6	-1,006.3	2,945.9	3,094.5	2.79	-1.25	2.50
9,854.0	90.00	90.70	6,946.3	-1,006.4	2,977.9	3,125.7	4.20	-2.81	3.13
9,886.0	89.40	90.50	6,946.5	-1,006.7	3,009.9	3,157.0	1.98	-1.88	-0.63
9,918.0	89.40	90.40	6,946.8	-1,007.0	3,041.9	3,188.3	0.31	0.00	-0.31
9,950.0	90.40	90.70	6,946.9	-1,007.3	3,073.9	3,219.6	3.26	3.13	0.94
9,981.0	91.30	90.50	6,946.4	-1,007.6	3,104.8	3,249.9	2.97	2.90	-0.65
10,013.0	92.00	90.70	6,945.5	-1,008.0	3,136.8	3,281.2	2.27	2.19	0.63
10,045.0	92.30	90.50	6,944.3	-1,008.3	3,168.8	3,312.5	1.13	0.94	-0.63
10,077.0	92.50	90.50	6,943.0	-1,008.6	3,200.8	3,343.7	0.63	0.63	0.00
10,108.0	92.90	90.50	6,941.5	-1,008.8	3,231.7	3,374.0	1.29	1.29	0.00
10,140.0	93.20	90.40	6,939.8	-1,009.1	3,263.7	3,405.3	0.99	0.94	-0.31
10,172.0	93.30	90.40	6,938.0	-1,009.3	3,295.6	3,436.5	0.31	0.31	0.00
10,203.0	92.30	90.40	6,936.5	-1,009.5	3,326.6	3,466.8	3.23	-3.23	0.00
10,235.0	92.20	90.40	6,935.2	-1,009.8	3,358.6	3,498.0	0.31	-0.31	0.00
10,267.0	92.60	90.70	6,933.9	-1,010.1	3,390.6	3,529.3	1.56	1.25	0.94
10,298.0	93.00	90.70	6,932.4	-1,010.4	3,421.5	3,559.6	1.29	1.29	0.00
10,330.0	92.20	90.40	6,930.9	-1,010.8	3,453.5	3,590.8	2.67	-2.50	-0.94
10,361.0	91.80	90.20	6,929.8	-1,010.9	3,484.5	3,621.1	1.44	-1.29	-0.65
10,393.0	92.00	90.20	6,928.8	-1,011.0	3,516.4	3,652.3	0.63	0.63	0.00
10,425.0	92.20	90.00	6,927.6	-1,011.1	3,548.4	3,683.6	0.88	0.63	-0.63
10,457.0	92.30	89.80	6,926.3	-1,011.0	3,580.4	3,714.7	0.70	0.31	-0.63
10,489.0	92.00	89.50	6,925.1	-1,010.8	3,612.4	3,745.9	1.33	-0.94	-0.94
10,520.0	91.20	88.60	6,924.3	-1,010.3	3,643.4	3,776.0	3.88	-2.58	-2.90
10,552.0	91.30	88.20	6,923.6	-1,009.4	3,675.3	3,807.0	1.29	0.31	-1.25
10,584.0	91.70	88.10	6,922.7	-1,008.4	3,707.3	3,838.0	1.29	1.25	-0.31
10,615.0	90.50	88.10	6,922.1	-1,007.4	3,738.3	3,868.0	3.87	-3.87	0.00
10,647.0	90.10	88.20	6,922.0	-1,006.3	3,770.3	3,899.0	1.29	-1.25	0.31
10,679.0	90.50	88.60	6,921.8	-1,005.4	3,802.3	3,930.0	1.77	1.25	1.25
10,710.0	91.00	88.60	6,921.4	-1,004.7	3,833.2	3,960.1	1.61	1.61	0.00
10,742.0	90.20	88.60	6,921.1	-1,003.9	3,865.2	3,991.2	2.50	-2.50	0.00
10,774.0	90.10	89.10	6,921.0	-1,003.3	3,897.2	4,022.2	1.59	-0.31	1.56
10,805.0	90.60	89.50	6,920.8	-1,002.9	3,928.2	4,052.4	2.07	1.61	1.29
10,837.0	90.80	89.30	6,920.4	-1,002.5	3,960.2	4,083.6	0.88	0.63	-0.63
10,869.0	91.30	89.50	6,919.8	-1,002.2	3,992.2	4,114.7	1.68	1.56	0.63
10,901.0	91.80	89.30	6,919.0	-1,001.9	4,024.2	4,145.8	1.68	1.56	-0.63
10,933.0	91.00	89.10	6,918.2	-1,001.4	4,056.2	4,177.0	2.58	-2.50	-0.63
10,964.0	91.10	88.80	6,917.6	-1,000.9	4,087.2	4,207.1	1.02	0.32	-0.97
10,996.0	91.60	88.90	6,916.9	-1,000.2	4,119.2	4,238.2	1.59	1.56	0.31
11,028.0	90.50	89.10	6,916.3	-999.7	4,151.1	4,269.3	3.49	-3.44	0.63
11,059.0	90.00	89.80	6,916.1	-999.4	4,182.1	4,299.4	2.77	-1.61	2.26
11,091.0	89.40	90.20	6,916.3	-999.4	4,214.1	4,330.7	2.25	-1.88	1.25
11,122.0	88.50	90.70	6,916.9	-999.6	4,245.1	4,361.0	3.32	-2.90	1.61
11,154.0	88.50	91.80	6,917.7	-1,000.3	4,277.1	4,392.3	3.44	0.00	3.44
11,186.0	88.40	91.40	6,918.6	-1,001.2	4,309.1	4,423.7	1.29	-0.31	-1.25
11,217.0	88.50	91.20	6,919.4	-1,001.9	4,340.1	4,454.1	0.72	0.32	-0.65
11,249.0	88.90	91.10	6,920.1	-1,002.5	4,372.1	4,485.5	1.29	1.25	-0.31
11,281.0	89.60	91.80	6,920.6	-1,003.4	4,404.0	4,516.9	3.09	2.19	2.19
11,313.0	89.80	92.60	6,920.7	-1,004.6	4,436.0	4,548.3	2.58	0.63	2.50
11,345.0	90.00	93.00	6,920.8	-1,006.1	4,468.0	4,579.9	1.40	0.63	1.25
11,381.0	90.50	92.80	6,920.6	-1,008.0	4,503.9	4,615.3	1.50	1.39	-0.56
11,435.0	90.50	92.80	6,920.1	-1,010.6	4,557.9	4,668.6	0.00	0.00	0.00

Company:	PETROLEUM DEVELOPMENT CORP Weld County CO	Local Co-ordinate Reference:	Well LaSalle 25G-402
Project:	SEC.25-T5N-R65W	TVD Reference:	WELL @ 4655.0ft (RKB - 15')
Site:	LaSalle 25F-HZ Pad Sec.25-T5N-R65W	MD Reference:	WELL @ 4655.0ft (RKB - 15')
Well:	LaSalle 25G-402	North Reference:	True
Wellbore:	Wellbore #1	Survey Calculation Method:	Minimum Curvature
Design:	Wellbore #1	Database:	Landmark

Survey									
Measured Depth (ft)	Inclination (°)	Azimuth (°)	Vertical Depth (ft)	+N/-S (ft)	+E/-W (ft)	Vertical Section (ft)	Dogleg Rate (°/100ft)	Build Rate (°/100ft)	Turn Rate (°/100ft)
BHL 2421'FNL, 500'FEL									

Checked By: _____	Approved By: _____	Date: _____
-------------------	--------------------	-------------