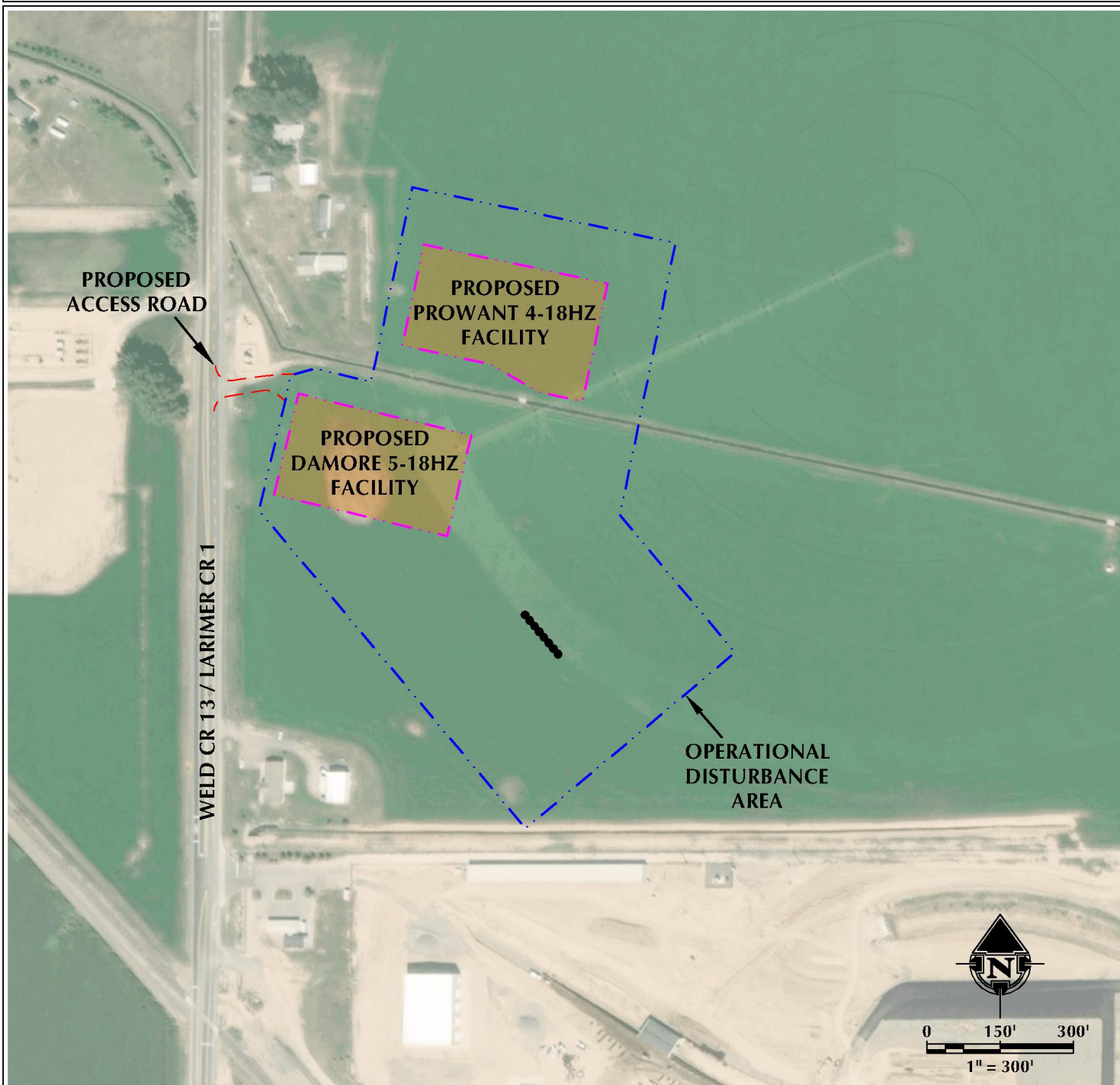


DAMORE 5-18HZ ACCESS MAP

SW1/4 NW1/4 SECTION 18, TOWNSHIP 5 NORTH, RANGE 67 WEST, 6TH P.M.



LEGEND

- PROPOSED WELL
- - - ACCESS
- PROPOSED FACILITY
- DISTURBANCE AREA

INTERSECTION OF ACCESS ROAD AND
WELD CR 13 / LARIMER CR 1

LATITUDE: 40.402306°

LONGITUDE: -104.944620°



609 CONSULTING, LLC
LOVELAND OFFICE
6706 North Franklin Avenue
Loveland, Colorado 80538
Phone: 970-776-4331

SHERIDAN OFFICE
1095 Saberton Avenue
Sheridan, Wyoming 82801
Phone: 307-674-0609

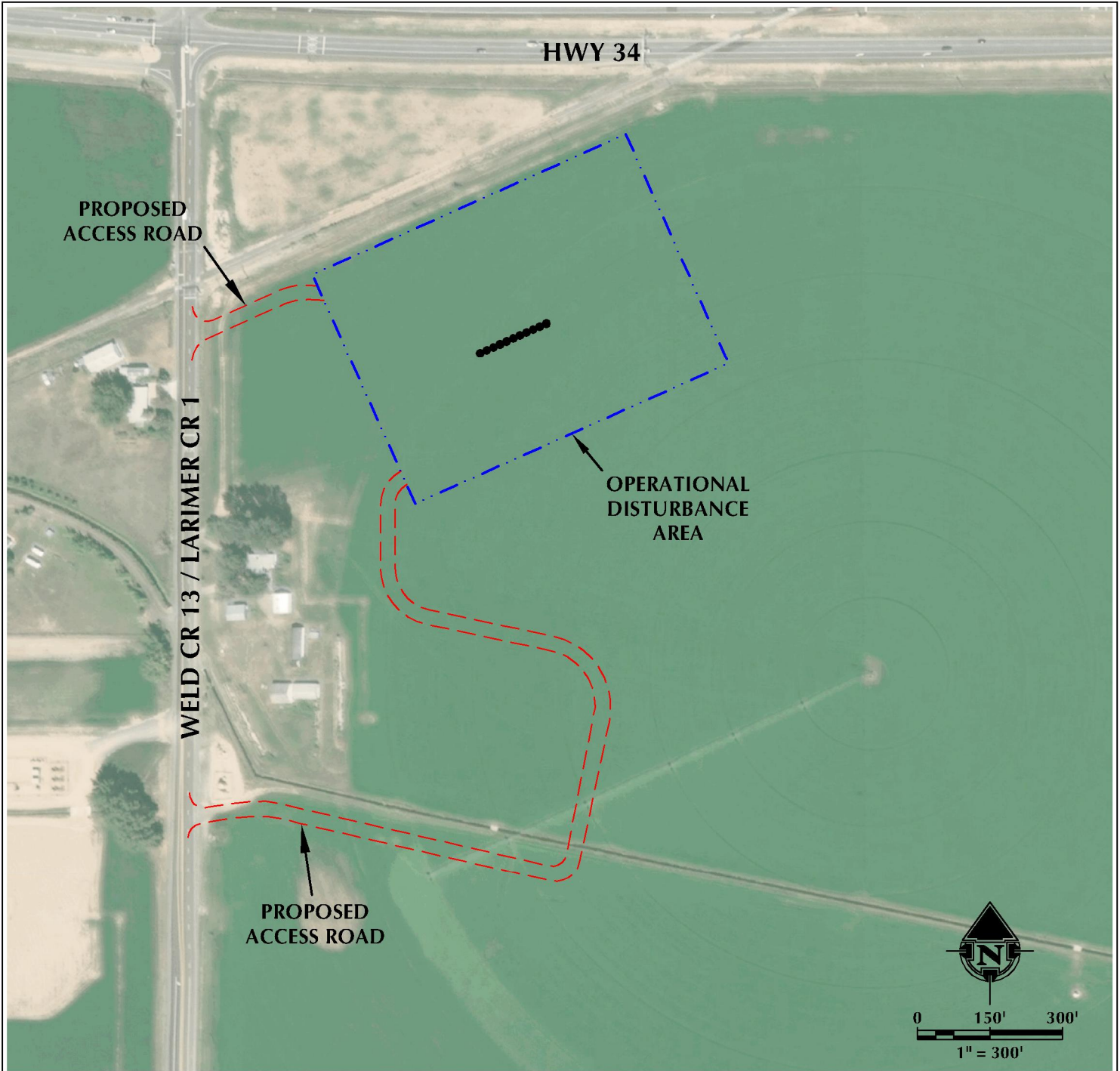
DATE SURVEYED: 9/7/18
DATE: 10/11/18
DRAFTER: DJD
REVISED: 4/25/19

DATA SOURCES:
- AERIAL COURTESY OF ESRI, INC.

PREPARED FOR:
Kerr-McGee Oil & Gas Onshore L.P.

PROWANT 4-18HZ ACCESS MAP

NW1/4 NW1/4 SECTION 18, TOWNSHIP 5 NORTH, RANGE 67 WEST, 6TH P.M.



LEGEND

- PROPOSED WELL
- - - ACCESS
- . - . - DISTURBANCE AREA

ACCESS NORTH

INTERSECTION OF ACCESS ROAD AND
WELD CR 13 / LARIMER CR 1

LATITUDE: 40.405037°

LONGITUDE: -104.944563°

ACCESS SOUTH

INTERSECTION OF ACCESS ROAD AND
WELD CR 13 / LARIMER CR 1

LATITUDE: 40.402306°

LONGITUDE: -104.944620°



609 CONSULTING, LLC
LOVELAND OFFICE
6706 North Franklin Avenue
Loveland, Colorado 80538
Phone: 970-776-4331

SHERIDAN OFFICE
1095 Saberton Avenue
Sheridan, Wyoming 82801
Phone: 307-674-0609

DATE SURVEYED: 9/7/18
DATE: 10/11/18
DRAFTER: DJD
REVISED:

DATA SOURCES:
- AERIAL COURTESY OF ESRI, INC.

PREPARED FOR:

Kerr-McGee Oil & Gas Onshore L.P.