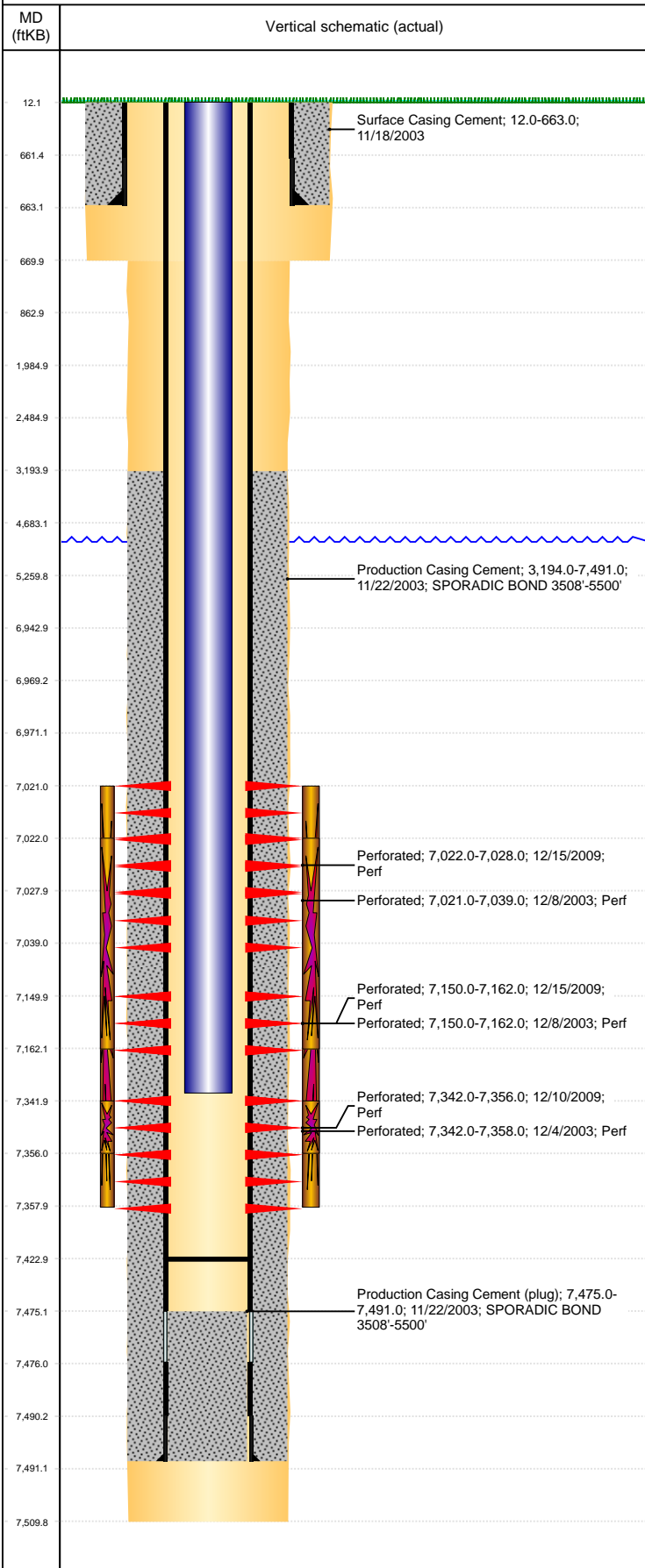


Well Name: CARLSON 20-29

VERTICAL, ORIGINAL HOLE, 5/20/2019 4:13:55 PM



Well Header									
API 05-123-21689		Business Unit DJ BASIN		District 15		Well Config VERTICAL			
KB - GL / MSL (ft... 12.00		Spud Date 11/17/2003		P & A Date		Well Production Status SI		SoRT No	
Comment DRILLER'S TD 7499', LOGGER'S & ST COMP RPT TD 7510'									
Surface Location (Congressional)									
Qtr 3 SE	Qtr 4 SE	Section 29	Twnshp 5 N	Range 66 W	Rng E/...	Actual Latitude (°) 40.36653000	Actual Longitude (°) -104.79801000		
Wellbore Sections									
Section Des		Size (in)		Act Top, MD (ftKB)		Act Btm, MD (ftKB)			
SURFACE		12 1/4		12		670			
PRODUCTION		7 7/8		670		7,510			
Casing Strings									
Csg Des		Run Date	OD (in)	Wt/Len (lb/ft)	Grade	Top, MD (ftKB)	MD (ftKB)		
Surface		11/18/2003	8 5/8	24.00	J-55	12.0	663.0		
Production		11/22/2003	4 1/2	11.60	I-80	12.0	7,491.0		
Cement									
Des		Start Date		Top (ftKB)		Btm (ftKB)			
Surface Casing Cement		11/18/2003		12.0		663.0			
Production Casing Cement		11/22/2003		3,194.0		7,491.0			
Zone Statuses									
Zone Name	Status Date	Status	Fluid Type	Job			Prod Method		
NIOBRARA	1/23/2014	PR	Water	COMMINGLE ZONES, 3/17/2010 00:00			Flowing		
NIOBRARA	3/22/2017	SI					Flowing		
CODELL	3/26/2010	PR					Flowing		
CODELL	1/23/2014	PR	Water				Flowing		
NIOBRARA-CO...	1/23/2014	PR	Water				Flowing		
Perforation Data									
Linked Zone	Bnch/Stg	Entered Shot Total	Top (ftKB)	Btm (ftKB)	Date				
NIOBRARA, ORIGINAL HOLE	A	1	7,021.00	7,039.00	12/8/2003				
NIOBRARA, ORIGINAL HOLE	A	18	7,022.00	7,028.00	12/15/2009				
NIOBRARA, ORIGINAL HOLE	B	36	7,150.00	7,162.00	12/15/2009				
NIOBRARA, ORIGINAL HOLE	B	1	7,150.00	7,162.00	12/8/2003				
CODELL, ORIGINAL HOLE		16	7,342.00	7,358.00	12/4/2003				
CODELL, ORIGINAL HOLE		42	7,342.00	7,356.00	12/10/2009				
Stimulation Intervals									
Zone		Start Date		Top (ftKB)		Btm (ftKB)			
NIOBRARA-CODELL, ORIGINAL HOLE		12/9/2003		7,021.0		7,358.0			
NIOBRARA, ORIGINAL HOLE		12/15/2009		7,022.0		7,162.0			
CODELL, ORIGINAL HOLE		12/15/2009		7,342.0		7,356.0			
Other In Hole									
Run Date	Des		OD (in)	Top (ftKB)		Btm (ftKB)			
Logs									
Date	Type			Top, MD (ftKB)	Btm, MD (ftKB)				
11/22/2003	COMPENSATED NEUTRON			4,200.0	7,492.0				
11/22/2003	GAMMA RAY			4,200.0	7,492.0				
11/22/2003	INDUCTION			665.0	7,502.0				
12/4/2003	CBL/CCL/GR			3,050.0	7,470.0				
12/4/2003	PERFORATION			3,050.0	7,470.0				
12/8/2003	PERFORATION			6,500.0	7,040.0				
11/24/2013	GYRO			10.0	7,200.0				
Plug Back Total Depths									
Date	Type	Com			Depth (ftKB)				
12/17/2003	FILL	CLEAN OUT			7,475.0				
3/18/2010	PLUG REMNANTS	DRILL CIPF AND CLEAN OUT TO 7423'			7,423.0				