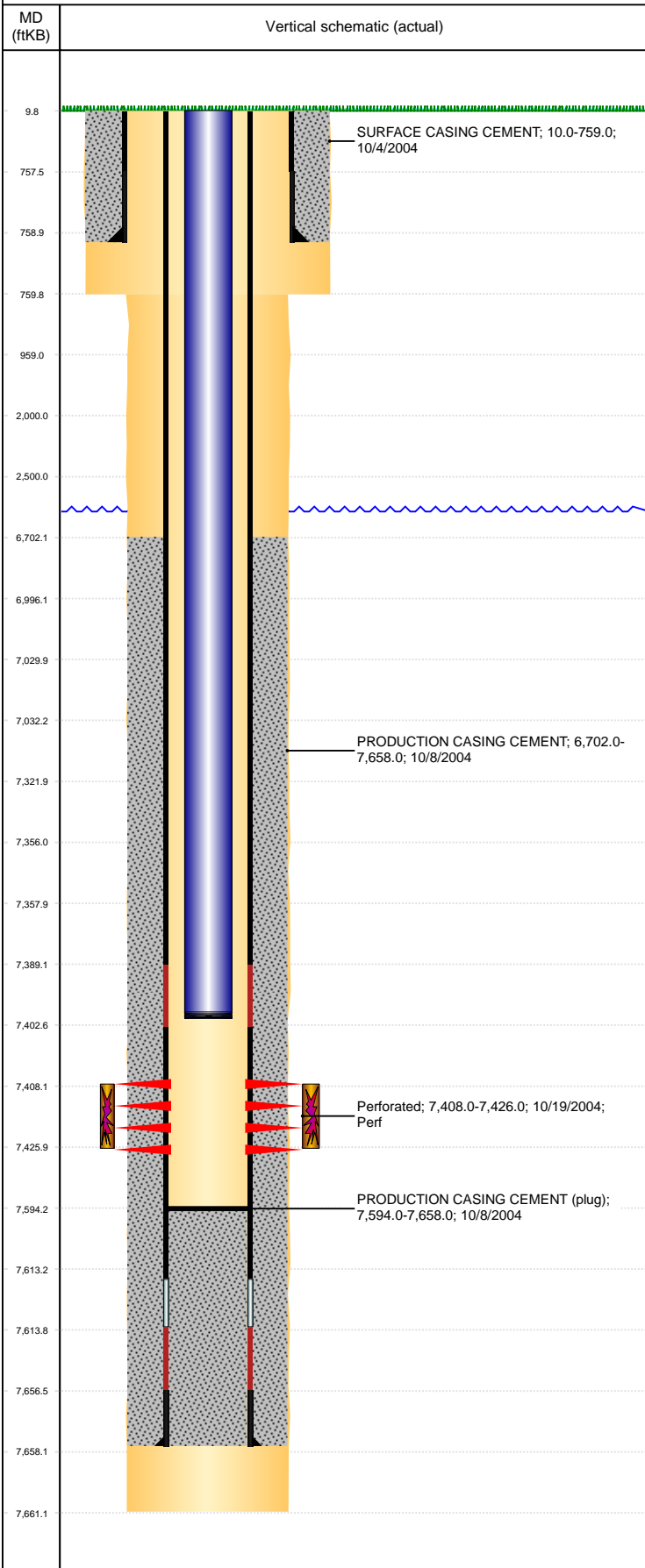


Well Name: BOOTH N25-15

VERTICAL, ORIGINAL HOLE, 5/20/2019 10:17:43 AM



Well Header									
API 05-123-21926		Business Unit DJ BASIN			District 15		Well Config VERTICAL		
KB - GL / MSL (ft... 10.00		Spud Date 10/3/2004		P & A Date		Well Production Status PR			SoRT No
Comment TD DISCREPANCY SOME REPORTS SAY 7650', STATE REPORT AND LOGS STAY 7661'. STATE SHOWS SHUT IN SINCE MAR 2017.									
Surface Location (Congressional)									
Qtr 3 SW	Qtr 4 SE	Section 25	Twnshp 5	Twnsh... N	Range 67	Rng E/... W	Actual Latitude (°) 40.36558606	Actual Longitude (°) -104.83910459	
Wellbore Sections									
Section Des			Size (in)			Act Top, MD (ftKB)		Act Btm, MD (ftKB)	
SURFACE			12 1/4			10		760	
PRODUCTION			7 7/8			760		7,661	
Casing Strings									
Csg Des		Run Date		OD (in)	Wt/Len (lb/ft)	Grade	Top, MD (ftKB)	MD (ftKB)	
Surface		10/4/2004		8 5/8	24.00	J-55	10.0	759.0	
Production		10/8/2004		4 1/2	11.60	M-80	10.0	7,658.0	
Cement									
Des				Start Date		Top (ftKB)		Btm (ftKB)	
SURFACE CASING CEMENT				10/4/2004		10.0		759.0	
PRODUCTION CASING CEMENT				10/8/2004		6,702.0		7,658.0	
Zone Statuses									
Zone Name	Status Date	Status	Fluid Type	Job				Prod Method	
CODELL	10/28/2004	PR	Oil					Flowing	
CODELL	2/3/2010	PR	Water					Flowing	
Perforation Data									
Linked Zone		Bnch/Stg	Entered Shot Total	Top (ftKB)		Btm (ftKB)		Date	
CODELL, ORIGINAL HOLE			72	7,408.00		7,426.00		10/19/2004	
Stimulation Intervals									
Zone			Start Date			Top (ftKB)		Btm (ftKB)	
CODELL, ORIGINAL HOLE			10/26/2004			7,408.0		7,426.0	
Other In Hole									
Run Date		Des				OD (in)	Top (ftKB)	Btm (ftKB)	
Logs									
Date		Type				Top, MD (ftKB)		Btm, MD (ftKB)	
10/8/2004		COMPENSATED DENSITY				759.0		7,641.0	
10/8/2004		INDUCTION				759.0		7,661.0	
10/14/2004		CBL/CCL/GR				6,490.0		7,594.0	
11/13/2013		GYRO				0.0		7,300.0	
Plug Back Total Depths									
Date		Type		Com				Depth (ftKB)	
10/8/2004		SHOE JOINT		SHOE JOINT				7,614.0	
10/14/2004		FILL		DEPTH LOGGER ON CBL				7,594.0	