

Rangely Weber Sand Unit

| Well Details: | | UP 117X22 |
|-----------------|--|---------------------------------------|
| STATE & CO | | CO - Rio Blanco |
| State Location | | SENW Section 22, T2N, R102W, 6TH P.M. |
| NAD83 location: | | LAT: 40.1285598 LONG: 108.83413 |
| API # | | 05-103-08667 |
| CHEVNO | | AH0447 |

| Casing Details: | |
|-------------------------|---------------------------|
| Type | Depth |
| KB | 5406 |
| GL | 5389 |
| 16 in. #/ft, UNKNOWN | 0 - 40,' 4 YDS sxs cmt |
| 9.625 in. 36 #/ft, K-55 | 0 - 3027,' 650 sxs cmt |
| 7 in. 23 #/ft, K-55 | 0 - 5387,' sxs cmt |
| 7 in. 26 #/ft, K-55 | 5387 - 6646,' 675 sxs cmt |
| Perfs, Top | 6291 |
| Perfs, Btm | 0 |
| PBTD | 6610 |
| TD | 6646 |

| Formation | Depth |
|--------------|-------|
| Niobrara | |
| Frontier | 0 |
| Frontier Snd | 3456 |
| Mowry | 3648 |
| Dakota | 3736 |
| Morrison | 3815 |
| Curtis | 4446 |
| Entrada | 4626 |
| Carmel | 4755 |
| Navajo | 4805 |

| | |
|-----------|------|
| Chinle | 5396 |
| Shinarump | 5540 |
| Moenkopi | 5619 |
| Weber | 6288 |

KB 5406
GL 5389
16 in. #/ft, UNKNOWN
0 - 40,' 4 YDS sxs cmt
9.625 in. 36 #/ft, K-55
0 - 3027,' 650 sxs cmt

7 in. 23 #/ft, K-55
0 - 5387,' sxs cmt

DV tool @ 4474

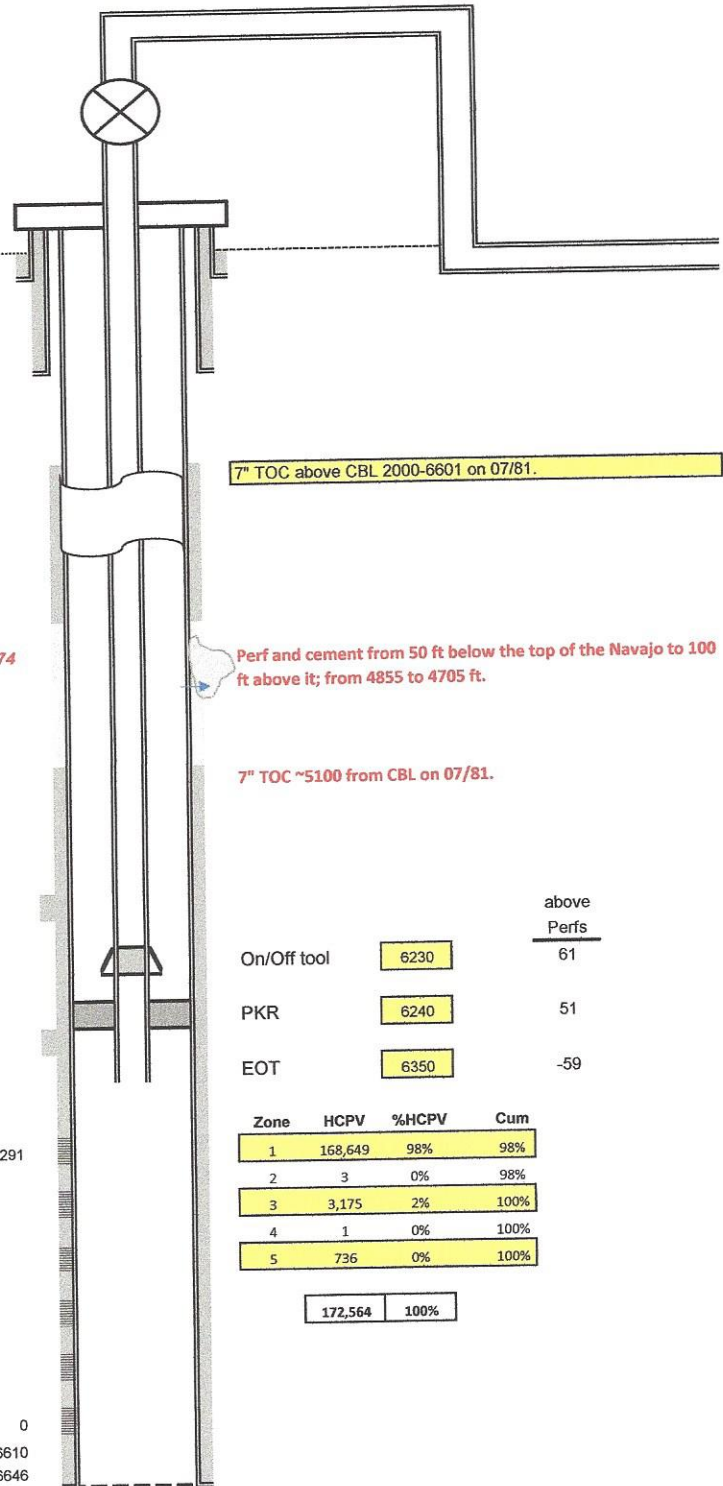
7 in. 26 #/ft, K-55

5387 - 6646,' 675 sxs cmt

| | | | |
|-----------|------|-------|-----|
| GOC_CALC | 5740 | | |
| | | FT | PAY |
| Weber 1a | 6288 | 175 | 30 |
| Weber 2 | 6463 | | |
| Weber 3a | 6470 | 84 | 19 |
| Weber 4 | 6554 | | |
| Weber 5a | 6572 | -6572 | 0 |
| Weber 6 | 0 | | |
| Weber 7a | 0 | 0 | 0 |
| Weber 8 | 0 | | |
| Weber 9a | 0 | 0 | 0 |
| Weber 10 | 0 | | |
| Weber 11a | 0 | 0 | 0 |
| | | -6313 | 49 |
| OWC_CALC | 6506 | | |

Perfs, Top 6291

Perfs, Btm 0
PBTD 6610
TD 6646



7" TOC above CBL 2000-6601 on 07/81.

Perf and cement from 50 ft below the top of the Navajo to 100 ft above it; from 4855 to 4705 ft.

7" TOC ~5100 from CBL on 07/81.

| | | above Perfs |
|-------------|------|-------------|
| On/Off tool | 6230 | 61 |
| PKR | 6240 | 51 |
| EOT | 6350 | -59 |

| Zone | HCPV | %HCPV | Cum |
|------|---------|-------|------|
| 1 | 168,649 | 98% | 98% |
| 2 | 3 | 0% | 98% |
| 3 | 3,175 | 2% | 100% |
| 4 | 1 | 0% | 100% |
| 5 | 736 | 0% | 100% |

172,564 100%

Notes:

1-
2-
3-