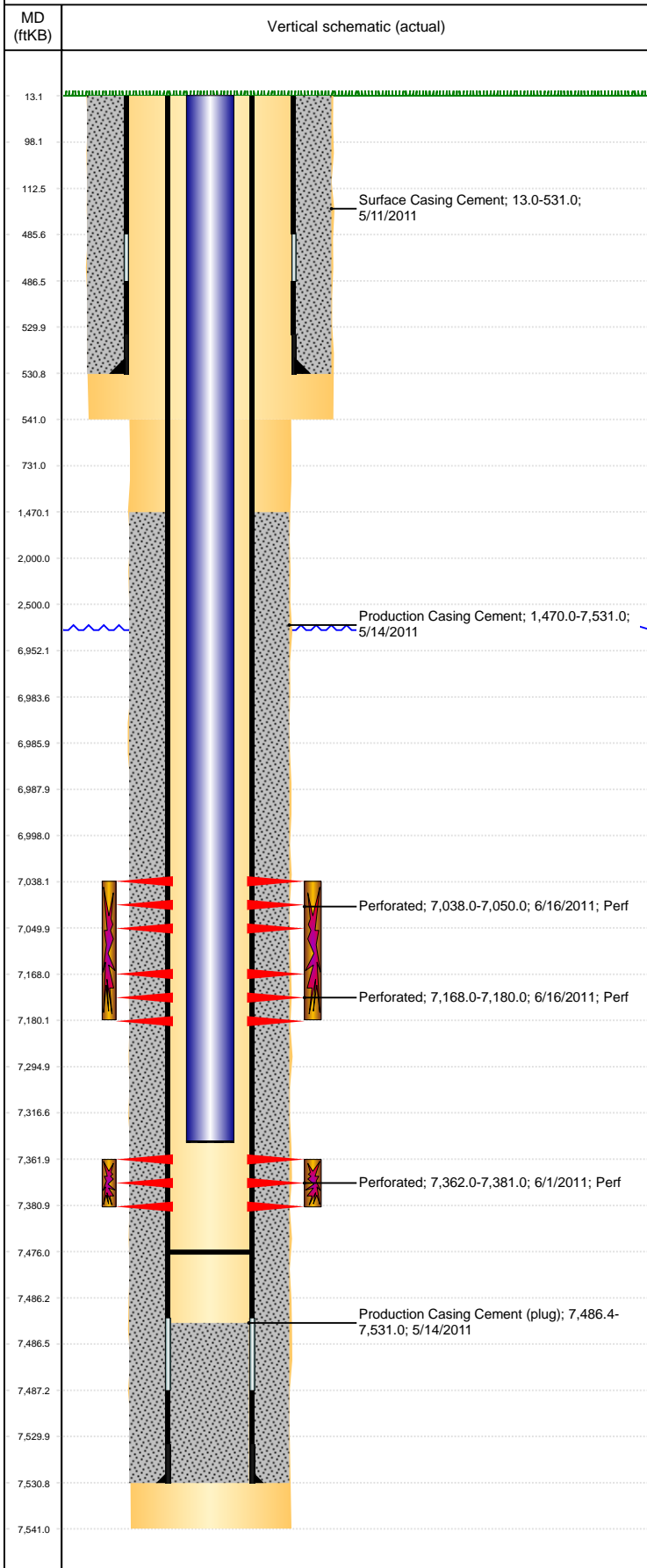


Well Name: BERNHARDT STATE PC N36-17

VERTICAL, ORIGINAL HOLE, 5/17/2019 11:13:40 AM



Well Header										
API 05-123-32823			Business Unit DJ BASIN			District 15		Well Config VERTICAL		
KB - GL / MSL (ft... 13.00		Spud Date 5/11/2011		P & A Date		Well Production Status PR			SoRT No	
Comment										
Surface Location (Congressional)										
Qtr 3	Qtr 4	Section	Twnshp	Twنش...	Range	Rng E/...	Actual Latitude (°)	Actual Longitude (°)		
SE	NE	36	5	N	67	W	40.35964784	-104.83546570		
Wellbore Sections										
Section Des			Size (in)			Act Top, MD (ftKB)		Act Btm, MD (ftKB)		
SURFACE			12 1/4			13		541		
PRODUCTION			7 7/8			541		7,541		
Casing Strings										
Csg Des			Run Date		OD (in)	Wt/Len (lb/ft)	Grade	Top, MD (ftKB)	MD (ftKB)	
Surface			5/11/2011		8 5/8	24.00	J-55	13.0	531.0	
PRODUCTION			5/14/2011		4 1/2	11.60	M-80	13.0	7,531.0	
Cement										
Des					Start Date		Top (ftKB)		Btm (ftKB)	
Surface Casing Cement					5/11/2011		13.0		531.0	
Production Casing Cement					5/14/2011		1,470.0		7,531.0	
Zone Statuses										
Zone Name		Status Date	Status	Fluid Type	Job				Prod Method	
CODELL		6/17/2011	PR		DRILLING/COMPLETION - ORIGINAL, 5/9/2011...					
NIOBRARA		6/17/2011	PR		DRILLING/COMPLETION - ORIGINAL, 5/9/2011...					
Perforation Data										
Linked Zone			Bnch/Stg	Entered Shot Total	Top (ftKB)		Btm (ftKB)		Date	
NIOBRARA, ORIGINAL HOLE			A	24	7,038.00		7,050.00		6/16/2011	
NIOBRARA, ORIGINAL HOLE			B	24	7,168.00		7,180.00		6/16/2011	
CODELL, ORIGINAL HOLE				76	7,362.00		7,381.00		6/1/2011	
Stimulation Intervals										
Zone					Start Date		Top (ftKB)		Btm (ftKB)	
NIOBRARA, ORIGINAL HOLE					6/16/2011		7,038.0		7,180.0	
CODELL, ORIGINAL HOLE					6/16/2011		7,362.0		7,381.0	
Other In Hole										
Run Date			Des			OD (in)	Top (ftKB)		Btm (ftKB)	
Logs										
Date		Type					Top, MD (ftKB)		Btm, MD (ftKB)	
5/14/2011		Caliper/Comp. Density/Neutron/GR/SP/ML					2,420.0		7,522.0	
5/14/2011		DIL/GR/SP/Caliper					531.0		7,542.0	
5/26/2011		CBL/CCL/GR					1,740.0		7,436.0	
Plug Back Total Depths										
Date		Type			Com				Depth (ftKB)	
5/26/2011		CEMENT PLUG			DEPTH LOGGER				7,443.0	
7/6/2011		PLUG REMNANTS			C/O WITH BLADE BIT.				7,476.0	