

Grand Mesa Operating CO, Glyde 1-15  
073-06765

Inspection #688304627

5/14/2019

Surface Cementing Inspection



**COLORADO**  
Oil & Gas Conservation  
Commission

Department of Natural Resources



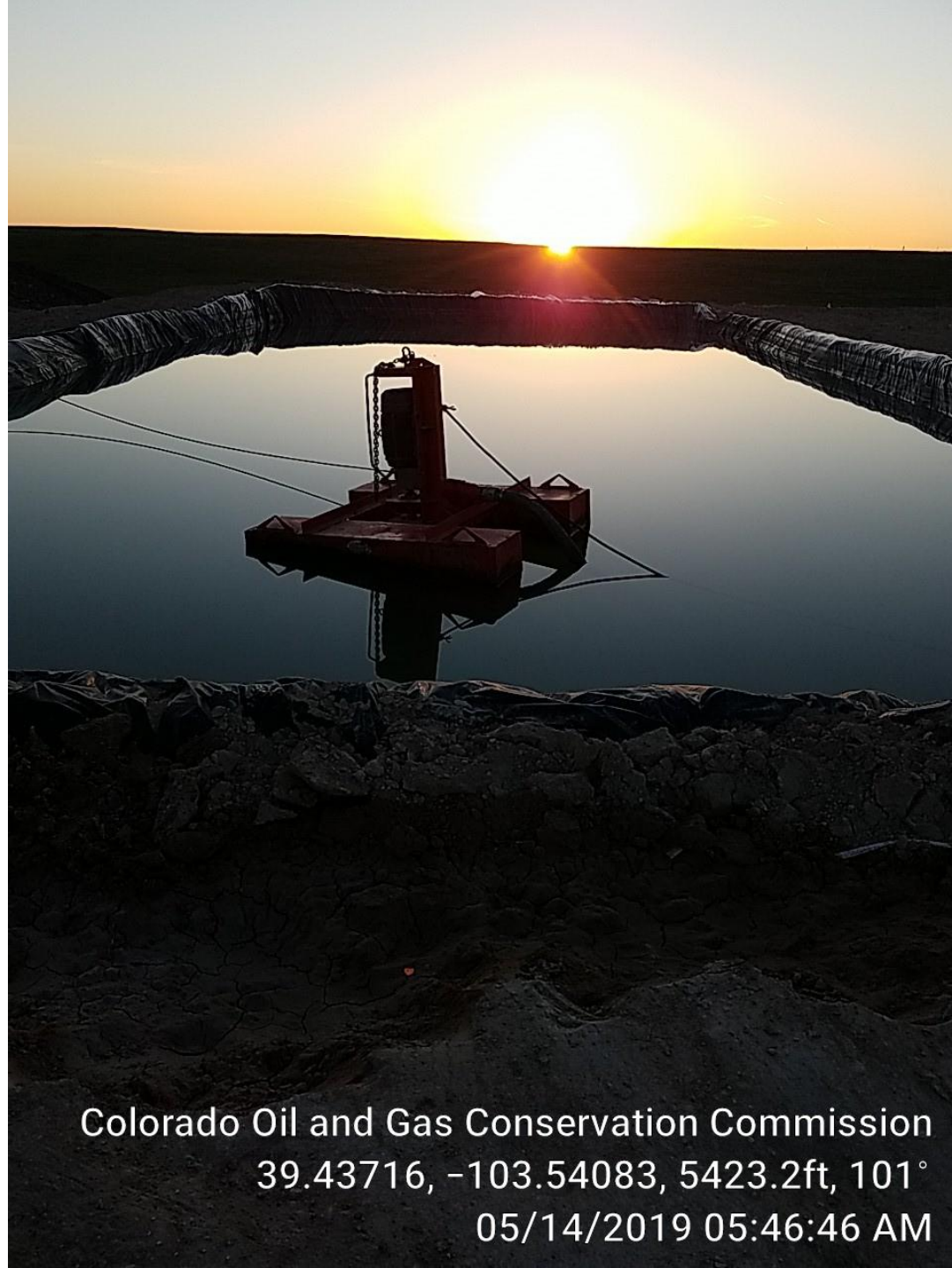
Colorado Oil and Gas Conservation Commission  
39.43644, -103.54088, 5400.3ft, 32°  
05/14/2019 04:19:27 AM



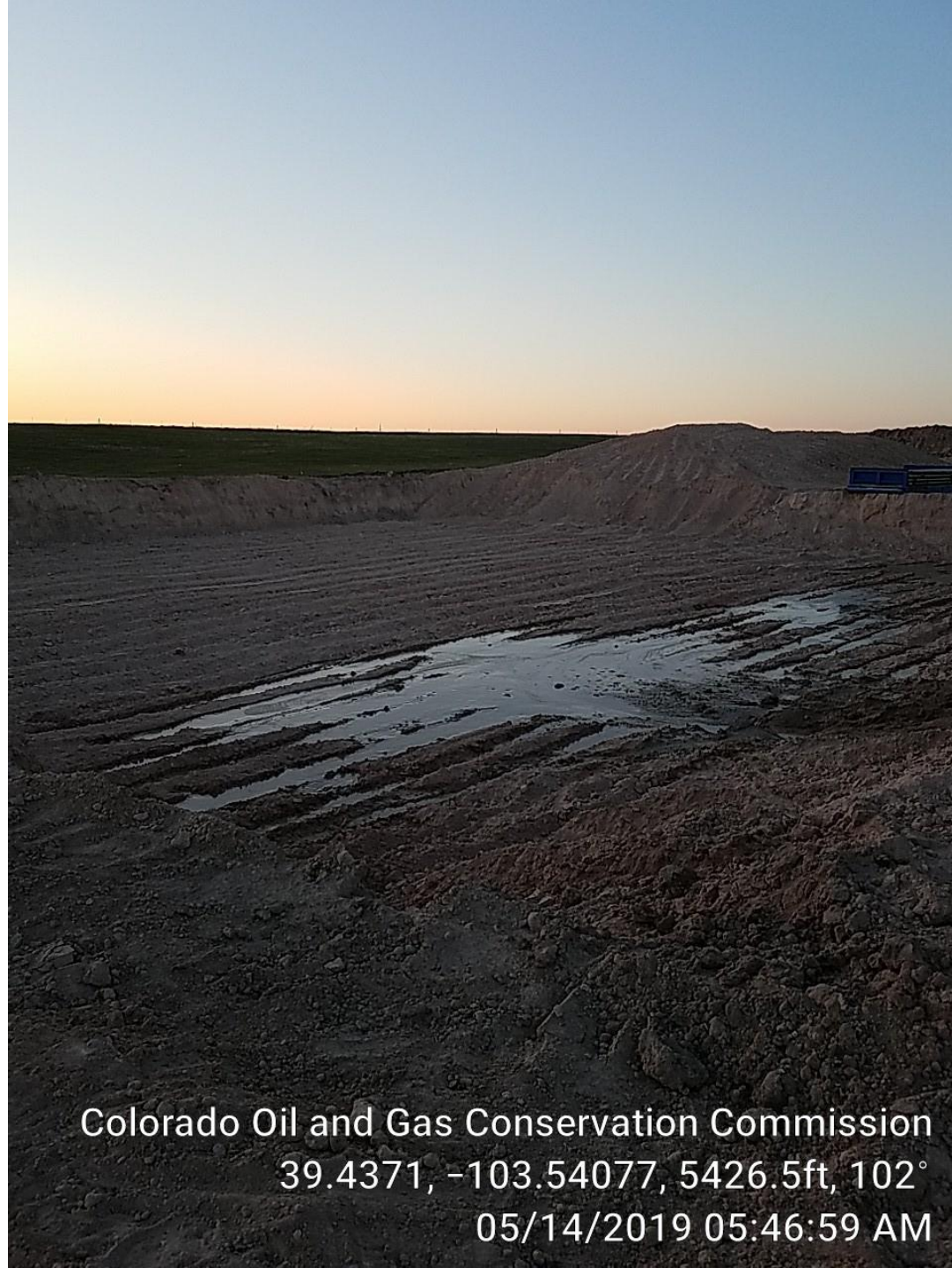
Colorado Oil and Gas Conservation Commission  
39.43668, -103.54082, 5324.8ft, 131°  
05/14/2019 04:56:17 AM



Colorado Oil and Gas Conservation Commission  
39.4366, -103.54082, 5400.3ft, 70°  
05/14/2019 04:55:04 AM



Colorado Oil and Gas Conservation Commission  
39.43716, -103.54083, 5423.2ft, 101°  
05/14/2019 05:46:46 AM



Colorado Oil and Gas Conservation Commission  
39.4371, -103.54077, 5426.5ft, 102°  
05/14/2019 05:46:59 AM



Colorado Oil and Gas Conservation Commission  
39.43675, -103.541, 5436.4ft, 84°  
05/14/2019 05:45:30 AM



Colorado Oil and Gas Conservation Commission  
39.43699, -103.54123, 5416.7ft, 104°  
05/14/2019 05:46:05 AM