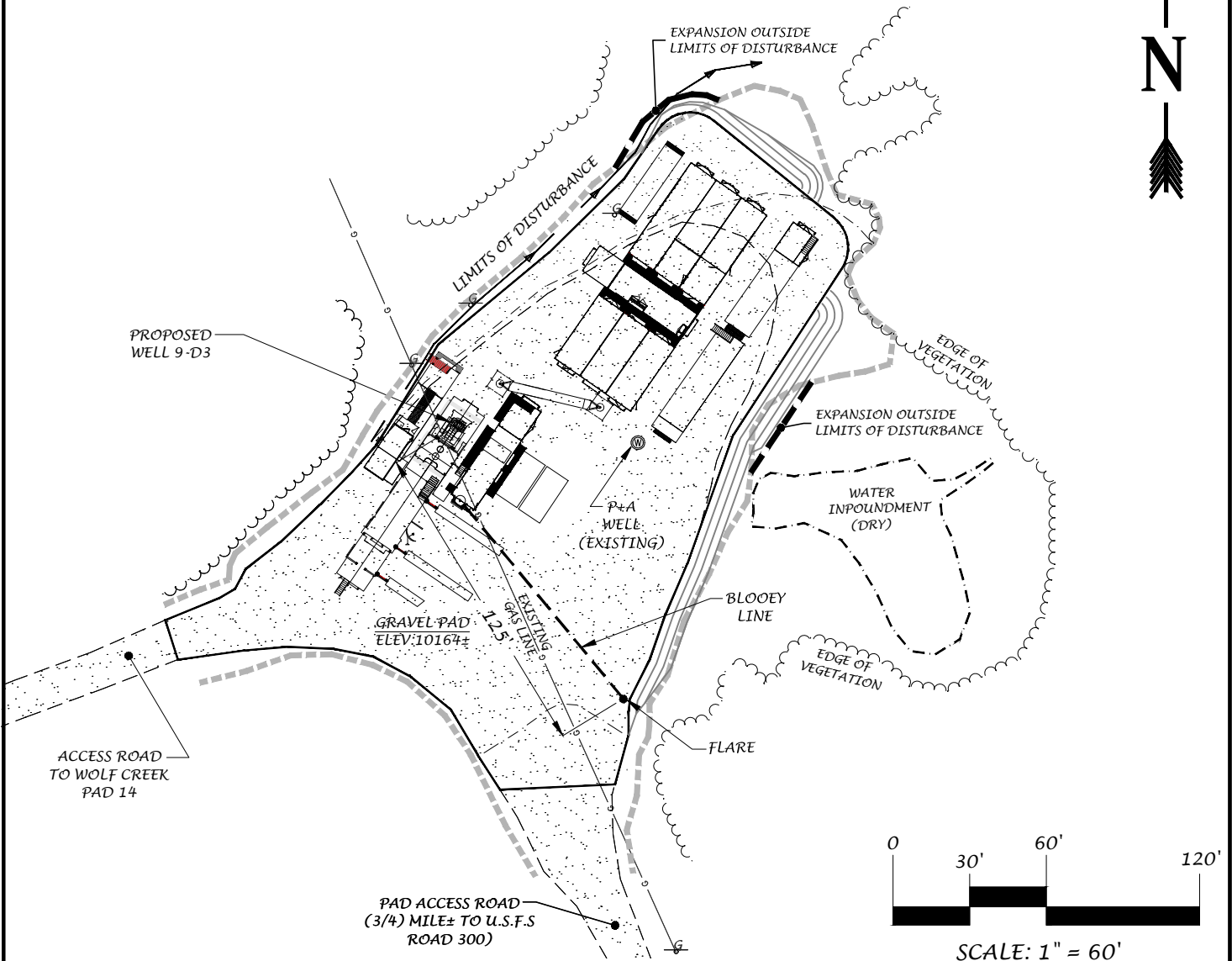


RIG LAYOUT

WOLF CREEK #9-D3

NW1/4SW1/4 SECTION 36, TOWNSHIP 8 SOUTH,
RANGE 90 WEST OF THE 6TH P.M.
COUNTY OF PITKIN, STATE OF COLORADO



TRUE NORTH
COLORADO

A LAND SURVEYING AND MAPPING COMPANY



BLACK HILLS ENERGY

SECTION 36, TOWNSHIP 8 SOUTH, RANGE 90 WEST OF 6TH P.M.
COUNTY OF PITKIN, STATE OF COLORADO



TRUE NORTH COLORADO, LLC.

A LAND SURVEYING AND MAPPING COMPANY
PO BOX 614 - 529 S WILD HORSE DRIVE
NEW CASTLE, COLORADO 81647
(970) 984-0474
www.truenorthcolorado.com

PROJECT NO: 2017-216

DATE: February 7, 2019

DRAWN

RPK

SURVEYED

LDV

SHEET

6 OF 6