

THE NIOBRARA AND SUSSEX FORMATIONS. VERIFY COVERAGE WITH A CEMENT BOND LOG.

LOCATION: SE1/4 OF NE1/4 OF SEC. 23, T.3N., R.64W. (1955 NSL, 660 ESL)

Ground Elevation: 4787

Number of Acres: 40



AQUIFER	ELEVATION		NET SAND	DEPTH TO		ANNUAL APPROP A-F	STATUS
	BOT.	TOP		BOT.	TOP		
UPPER DAWSON	----	----	----	----	----	----	---
LOWER DAWSON	----	----	----	----	----	----	---
DENVER	----	----	----	----	----	----	---
UPPER ARAPAHOE	----	----	----	----	----	----	---
LOWER ARAPAHOE	----	----	----	----	----	----	---
LARAMIE-FOX HILLS	4234	4558	168.6	553	229	10.12	NT

note: E indicates location is at aquifer boundary and values may be more approximate.

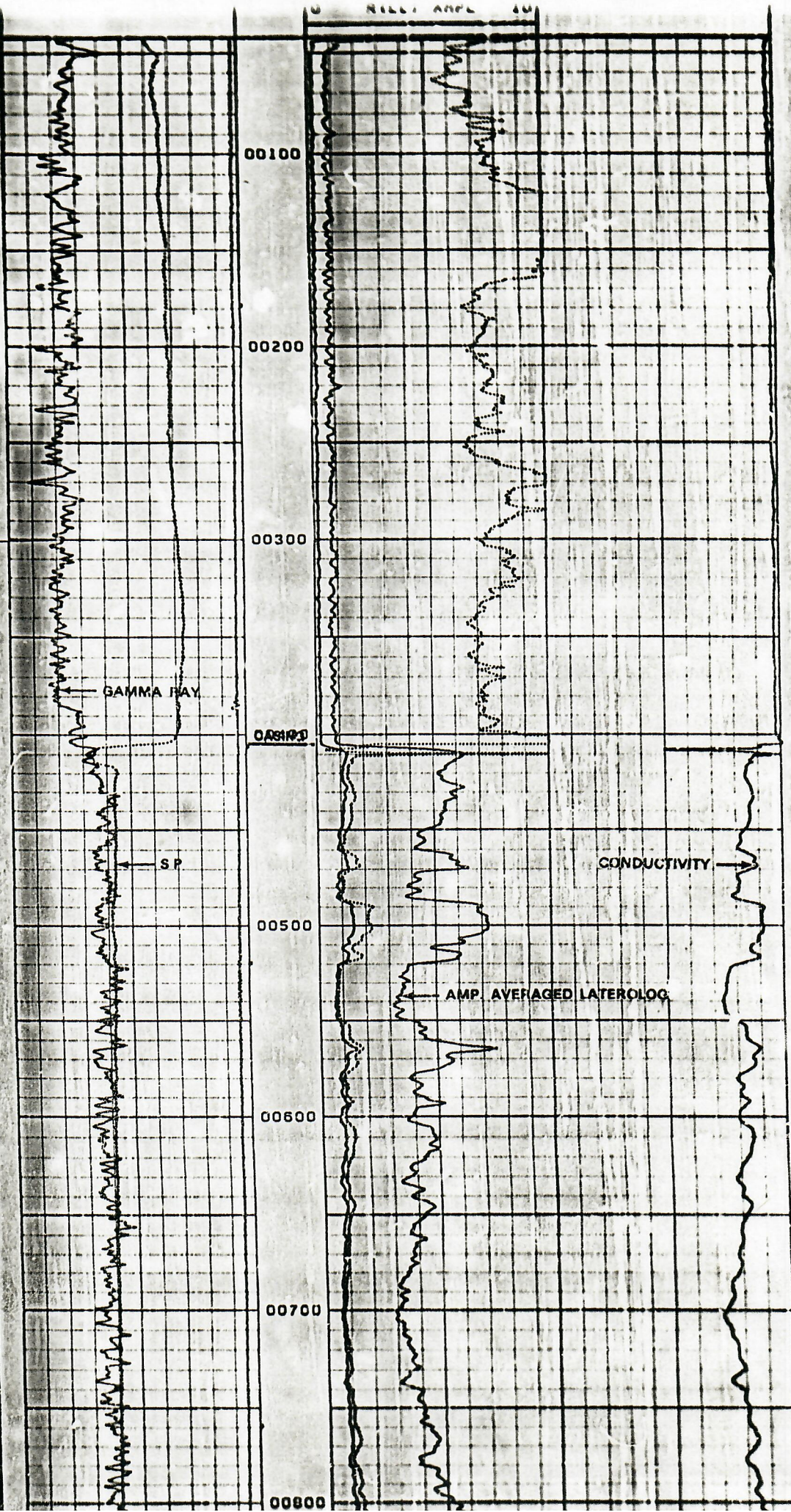
*surf cs
must be set
50' below
Fox Hills
transition and
be 5% of
total depth*

DUAL INDUCTION LATEROLOGS

REMARKS:

GLARKART INDUSTRIES INC

01-04-64	18:11	42.0	0	0042-31	0	0001-19	2
-100.0 -1201+ 100.0		2000	C (ILD)		MMH03		
0 GR API 200		0	R (ILD) R-M		50		
		0	R (ILL) R-M		50		
		0	R (ILL) AMPL		10		



**Colorado
Oil & Gas Conservation Commission**



COGCC Results

Selected Items Report

Oil and Gas Wells Selected

WELL DESCRIPTION	LOCATION	WELL INFORMATION
05-123-15781, HS RESOURCES INC , 13-12 DALBEY D	NWSW 13 3N -64W (6)	Sidetrack TD Formation Status 00 7450 SUSX PR 00 7450 JNC SX RC 00 7450 JSND PR 00 7450 NB-CD PR
05-123-16062, HS RESOURCES INC , 13-14 DALBEY D	SESW 13 3N -64W (6)	Sidetrack TD Formation Status 00 6961 NBCSX RC 00 6961 SUSX PR 00 6961 NB-CD PR
05-123-16506, HS RESOURCES INC , 13-13 DALBEY D	SWSW 13 3N -64W (6)	Sidetrack TD Formation Status 00 6950 SUSX PR 00 6950 NB-CD PR 00 6950 NBCSX RC
05-123-16507, HS RESOURCES INC , 13-11 DALBEY D	NESW 13 3N -64W (6)	Sidetrack TD Formation Status 00 6968 NB-CD PR
05-123-15610, FREEDOM ENERGY INC , 13-14 DALBEY D	SESW 13 3N -64W (6)	Sidetrack TD Formation Status 00
05-123-07734, PATINA OIL & GAS CORPORATION , D 14-13J SPIKE STATE GWS	SWSW 14 3N -64W (6)	Sidetrack TD Formation Status 00 7565 CODL PR 00 7565 JSND PR 00 7565 SUSX PR
05-123-15776, FREEDOM ENERGY INC , 14-9 DALBEY D	NESE 14 3N -64W (6)	Sidetrack TD Formation Status 00
05-123-16015, PATINA OIL & GAS CORPORATION , D 14-10 SPIKE STATE GWS	NWSE 14 3N -64W (6)	Sidetrack TD Formation Status 00 7070 CODL PR 00 7070 SUSX PR
05-123-16032, PATINA OIL & GAS CORPORATION , D 14-11 SPIKE STATE GWS	NESW 14 3N -64W (6)	Sidetrack TD Formation Status 00 7132 CODL PR 00 7132 SUSX PR 00 7132 SX-CD RC
05-123-16034, PATINA OIL & GAS CORPORATION , D 14-14 SPIKE STATE GWS	SESW 14 3N -64W (6)	Sidetrack TD Formation Status 00 7143 CODL PR 00 7143 SUSX PR 00 7143 SX-CD RC
05-123-16035, PATINA OIL & GAS CORPORATION , D 14-15 SPIKE STATE GWS	CSE 14 3N -64W (6)	Sidetrack TD Formation Status 00 7080 CODL PR 00 7080 SUSX PR 00 7080 SX-CD RC
05-123-16036, GERRITY OIL & GAS CORP , D 14-16 SPIKE	SESE 14 3N -64W (6)	Sidetrack TD Formation Status 00

05-123-16065, PATINA OIL & GAS CORPORATION , D 22-08 SPIKE ST GWS	SENE 22 3N -64W (6)	Sidetrack TD Formation Status 00 7168 CODL PR 00 7168 SUSX PR
05-123-16066, PATINA OIL & GAS CORPORATION , D 22-09 SPIKE ST GWS	NESE 22 3N -64W (6)	Sidetrack TD Formation Status 00 7182 SUSX PR
05-123-11335, ACEITE ENERGY CORP , 1-23 TWO E RANCH	SESE 23 3N -64W (6)	Sidetrack TD Formation Status 00 7420 JSND PR
05-123-16553, PATINA OIL & GAS CORPORATION , 23-2J PARKER RED D	SENW 23 3N -64W (6)	Sidetrack TD Formation Status 00 7575 JSND PR
05-123-16961, PATINA OIL & GAS CORPORATION , 23-3 PARKER RED D	NENW 23 3N -64W (6)	Sidetrack TD Formation Status 00 7127 CODL PR 00 7127 SUSX PR
05-123-16962, PATINA OIL & GAS CORPORATION , D 23-4 PARKER RED	NWNW 23 3N -64W (6)	Sidetrack TD Formation Status 00 7152 CODL PR
05-123-16963, PATINA OIL & GAS CORPORATION , 23-5 PARKER RED D	SWNW 23 3N -64W (6)	Sidetrack TD Formation Status 00 7166 CODL PR 00 7166 SUSX PR
05-123-17001, PATINA OIL & GAS CORPORATION , D 23-3J PARKER BLUE	NWSW 23 3N -64W (6)	Sidetrack TD Formation Status 00 7612 JSND RC 00 7612 NB-CD PR 00 7612 SUSX PR
05-123-17002, PATINA OIL & GAS CORPORATION , D 23-10 PARKER BLUE	NWSE 23 3N -64W (6)	Sidetrack TD Formation Status 00 7080 CODL PR 00 7080 SUSX PR
05-123-17003, PATINA OIL & GAS CORPORATION , D 23-11 PARKER BLUE	NESW 23 3N -64W (6)	Sidetrack TD Formation Status 00 7138 CODL PR
05-123-17004, PATINA OIL & GAS CORPORATION , D 23-14 PARKER BLUE	SESW 23 3N -64W (6)	Sidetrack TD Formation Status 00 7120 CODL PR
05-123-17005, PATINA OIL & GAS CORPORATION , D 23-15 PARKER BLUE	SWSE 23 3N -64W (6)	Sidetrack TD Formation Status 00 7080 CODL PR 00 7080 SUSX PR
05-123-17018, PATINA OIL & GAS CORPORATION , 23-09 PARKER BLUE D	NESE 23 3N -64W (6)	Sidetrack TD Formation Status 00 7042 CODL PR
05-123-17019, PATINA OIL & GAS CORPORATION , D 23-13 PARKER BLUE	SWSW 23 3N -64W (6)	Sidetrack TD Formation Status 00 7136 CODL PR 00 7136 SUSX PR
05-123-19914, PETROLEUM DEVELOPMENT CORP , 23-32 GUTTERSON	SWNE 23 3N -64W (6)	Sidetrack TD Formation Status 00 7259 CODL PR
05-123-20019, PETROLEUM DEVELOPMENT CORP , 23-41 GUTTERSON	NENE 23 3N -64W (6)	Sidetrack TD Formation Status 00 7122 CODL PR
05-123-11016, ACEITE ENERGY CORP , 1-24 L.F. RANCH	SWSW 24 3N -64W (6)	Sidetrack TD Formation Status 00 7586 DK-J 00 7586 DKTA PR 00 7586 JSND PR
05-123-11199, ACEITE ENERGY CORP , 2-24 GLAZIER	NENE 24 3N -64W (6)	Sidetrack TD Formation Status 00 7440 JSND PR
	NESW 24	Sidetrack TD Formation Status

05-123-16141, PATINA OIL & GAS CORPORATION , D 24-11 KARCH BLUE	3N -64W (6)	00 6991 CODL PR
05-123-16170, PATINA OIL & GAS CORPORATION , 24-12 KARCH BLUE D	NWSW 24 3N -64W (6)	Sidetrack TD Formation Status 00 7023 CODL PR
05-123-16171, PATINA OIL & GAS CORPORATION , D 24-14 KARCH BLUE	SESW 24 3N -64W (6)	Sidetrack TD Formation Status 00 7025 CODL PR
05-123-16187, HS RESOURCES INC , 24-15 DALBEY D	SWSE 24 3N -64W (6)	Sidetrack TD Formation Status 00 6975 NB-CD PR
05-123-15642, HS RESOURCES INC , 24-10 DALBEY D	NWSE 24 3N -64W (6)	Sidetrack TD Formation Status 00 7575 JNBCD RC 00 7575 JSND PR 00 7575 NB-CD PR
05-123-15611, HS RESOURCES INC , 25-3 DALBEY D	NENW 25 3N -64W (6)	Sidetrack TD Formation Status 00 7680 JNBCD RC 00 7680 JSND PR 00 7680 NB-CD PR
05-123-11336, ACEITE ENERGY CORP , 1-26 HEYDE	NENE 26 3N -64W (6)	Sidetrack TD Formation Status 00 7508 CODL PR 00 7508 JSND TA

Facilities Selected

FACILITY DESCRIPTION	LOCATION	PIT INFORMATION		
		Type	Unlined	Status

Water Wells Selected

WELL DESCRIPTION	LOCATION	WELL INFORMATION			
		Depth	Top Perf	Bottom Perf	Aquifer
Receipt=9060555, Permit=0011047--, 2 E RANCHES INC	SESW 23 3N-64W	392	0	0	GW
Receipt=0025527, Permit=0103682--, L F RANCH	NESW 24 3N-64W	60	7	60	GW
Receipt=0107009B, Permit=0024651-F-, ADOLPH COORS COMPANY	NWNW 25 3N-64W	0	0	0	GW