

Company: Crestone Peak Resources Operating LLC

Well: Sam #3B-25H-M166

Field: Wattenberg

County: Weld State: Colorado

Isolation Scanner  
Cement Evaluation  
VDL Wide

County:	Weld		
Field:	Wattenberg		
Location:	1403' FSL & 311' FWL		
Well:	Sam #3B-25H-M166		
Company:	Crestone Peak Resources Operating LLC		
Location:		Elev.:	K.B. 5108.00 ft
1403' FSL & 311' FWL			G.L. 5085.00 ft
NWSW 25 1N 66W			D.F. 5108.00 ft
Lat/Long: 40.018867 / -104.733853			
Permanent Datum:	Ground Level	Elev.:	5085.00 f
Log Measured From:	Kelly Bushing	23.00 ft	above Perm.Datum
Drilling Measured From:	Kelly Bushing		
API Serial No.	Section:	Township:	Range:
05-123-46128	25	1N	66W

Logging Date	16-Oct-2018		
Run Number	One		
Depth Driller	12171.00 ft		
Schlumberger Depth	6880.00 ft		
Bottom Log Interval	6880.00 ft		
Top Log Interval	50.00 ft		
Casing Fluid Type	Water		
Salinity			
Density	8.4 lbm/gal		
Fluid Level	8.00 ft		
BIT/CASING/TUBING STRING			
Bit Size	8.50 in		
From	2386.00 ft		
To	12171.00 ft		
Casing/Tubing Size	5.5 in		
Weight	20 lbm/ft		
Grade	N/A		
From	0.00 ft		
To	12171.00 ft		
Max Recorded Temperatures	183 degF		
Logger on Bottom	16-Oct-2018	09:40:00	
Unit Number	Fort Morgan	9108	
Recorded By	Alan Moreno		
Witnessed By	Keith Kershnik		

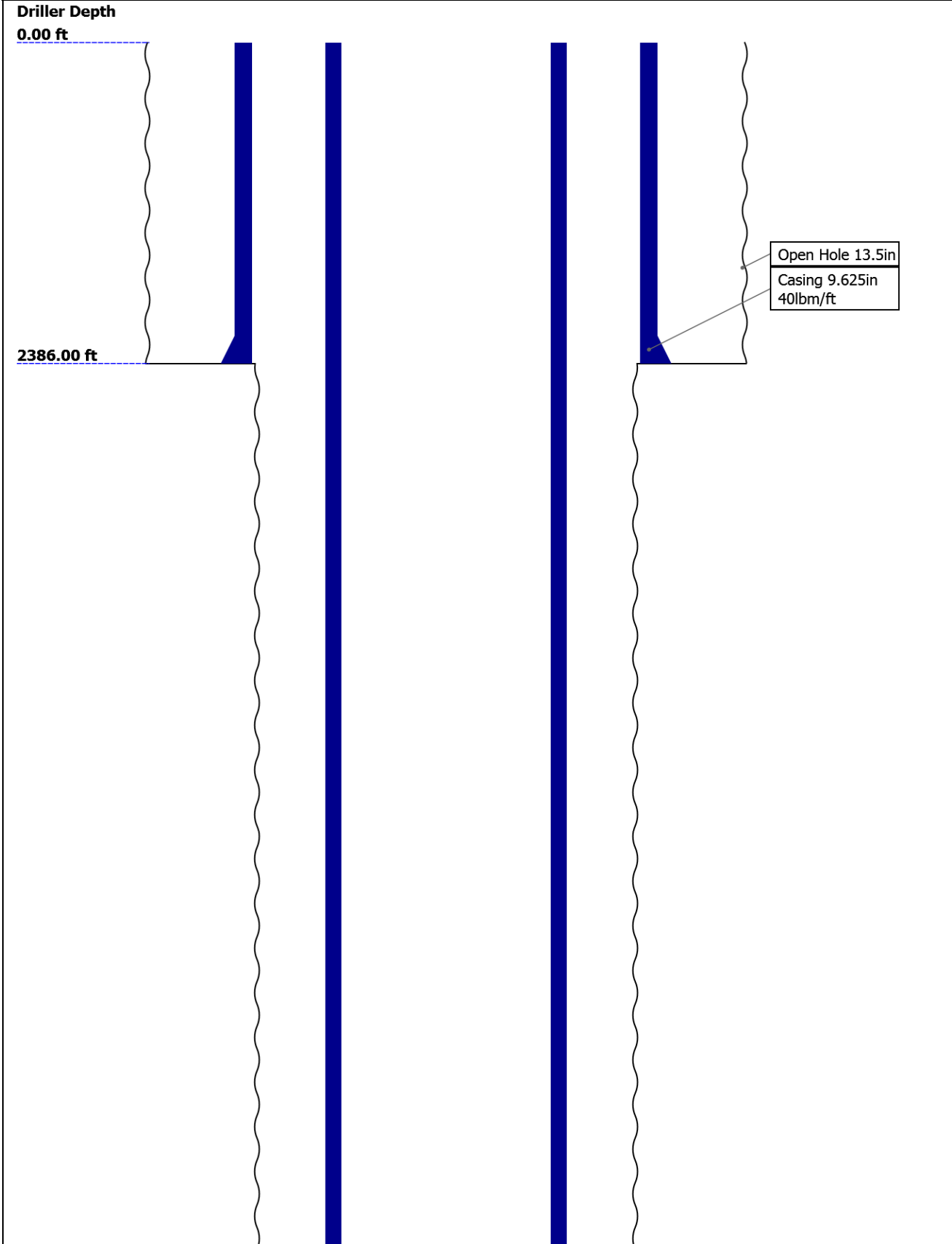
Disclaimer

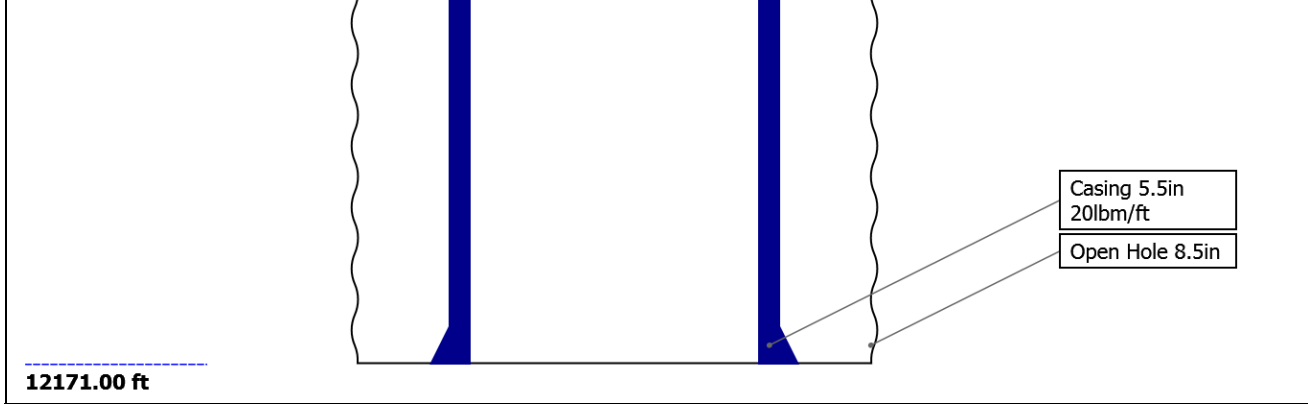
THE USE OF AND RELIANCE UPON THIS RECORDED-DATA BY THE HEREIN NAMED COMPANY (AND ANY OF ITS AFFILIATES, PARTNERS, REPRESENTATIVES, AGENTS, CONSULTANTS AND EMPLOYEES) IS SUBJECT TO THE TERMS AND CONDITIONS AGREED UPON BETWEEN SCHLUMBERGER AND THE COMPANY, INCLUDING: (a) RESTRICTIONS ON USE OF THE RECORDED-DATA; (b) DISCLAIMERS AND WAIVERS OF WARRANTIES AND REPRESENTATIONS REGARDING COMPANY'S USE AND RELIANCE UPON THE RECORDED-DATA; AND (c) CUSTOMER'S FULL AND SOLE RESPONSIBILITY FOR ANY INFERENCE DRAWN OR DECISION MADE IN CONNECTION WITH THE USE OF THIS RECORDED-DATA.

Contents

- 1. Header
- 2. Disclaimer
- 3. Contents
- 4. Well Sketch
- 5. Borehole Size/Casing/Tubing Record
- 6. Remarks and Equipment Summary
- 7. Depth Summary
- 8. One IBC VDL Wide 0 PSI
  - 8.1 Integration Summary
  - 8.2 Composite Summary
  - 8.3 Log ( IBC VDL WIDE )
- 9. Tail

Well Sketch





Borehole Size/Casing/Tubing Record

Bit						
Bit Size ( in )	13.5	8.5				
Top Driller ( ft )	0	2386				
Top Logger ( ft )	0	2386				
Bottom Driller ( ft )	2386	12171				
Bottom Logger ( ft )	2386	12171				
Casing						
Size ( in )	9.625	5.5				
Weight ( lbm/ft )	40	20				
Inner Diameter ( in )	8.835	4.778				
Grade	N/A	N/A				
Top Driller ( ft )	0	0				
Top Logger ( ft )	0	0				
Bottom Driller ( ft )	2386	12171				
Bottom Logger ( ft )	2386	12171				

Remarks and Equipment Summary

One: Toolstring				One: Remarks	
<b>Equip name</b>	<b>Length</b>	<b>MP name</b>	<b>Offset</b>	Toolstring ran as per tool sketch	
LEH-QT	30.73			5" gemcos and Houma kit used for centralization	
LEH-QT				All passes ran under 0 PSI	
<b>EDTC-B</b>	<b>27.24</b>			10deg 6" resolution used for main and repeat passes	
EDTH-B				10deg 1.5" resolution used for HiRes passes	
EDTG-A				Data affected at bottom due to deviation	
EDTC-B				Lead: 12.5ppg	
				Tail: 13.5ppg	
<b>AH-184[2]</b>	<b>20.74</b>				
<b>AH-184[1]</b>	<b>18.74</b>				
<b>USIT-E</b>	<b>16.74</b>				
ECH-MFA					
USAC-A					
USIS-A					
USSC-B					
IBCS-A					
EAB-GENC					

<div data-bbox="220 0 331 569"> </div> <div data-bbox="86 594 445 684"> <p>Lengths are in ft  Maximum Outer Diameter = 3.625 in  Line: Sensor Location, Value: Gating Offset  All measurements are relative to TOOL_ZERO</p> </div>		
---	--	--

Depth Summary			
	One		
Depth Measuring Device			
Type	IDW-B		
Serial Number	6455		
Calibration Date	27-Jul-2018		
Calibrator Serial Number	57		
Calibration Cable Type	7-32ASXS		
Wheel Correction 1	-1		
Wheel Correction 2	1		
Tension Device			
Type	CMTD-B/A		
Serial Number	1703		
Calibration Date	29-Jul-2018		
Calibrator Serial Number	88310A		
Number of Calibration Points	10		
Calibration Root Mean Square Error	6		
Calibration Peak Error	9		
Logging Cable			
Type	7-32AS-XS		
Serial Number			
Length	21111.00 ft		
Conveyance Type	Wireline		
Rig Type	Crane		
One:Depth Control Parameters		Depth Control Remarks	
Log Sequence	First Log In the Well	All Schlumberger depth control procedures followed IDW used as primary depth control, Z-chart used as secondary	
Rig Up Length At Surface			
Rig Up Length At Bottom			
Rig Up Length Correction			

Stretch Correction  
Tool Zero Check At Surface

One

IBC VDL Wide 0 PSI

Pass Summary

Run Name	Pass Objective	Direction	Top	Bottom	Start	Stop	DSC Mode	Depth Shift	Include Parallel Data
One	Log[4]:Up	Up	48.90 ft	6889.21 ft	16-Oct-2018 9:34:30 AM	16-Oct-2018 11:12:47 AM	ON	10.79 ft	Yes

All depths are referenced to toolstring zero

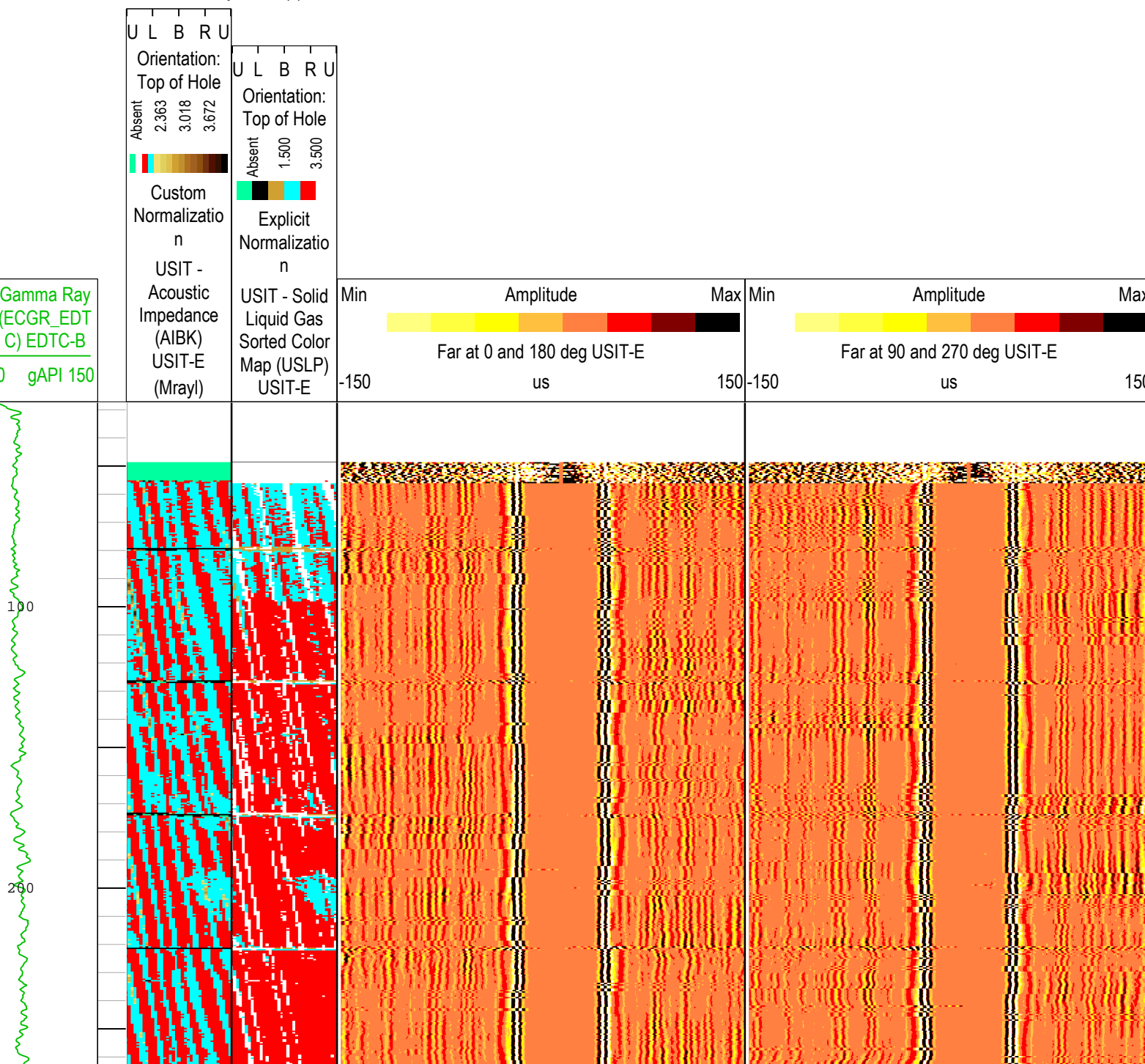
Log

Company:Crestone Peak Resources Operating LLC Well:Sam #3B-25H-M166

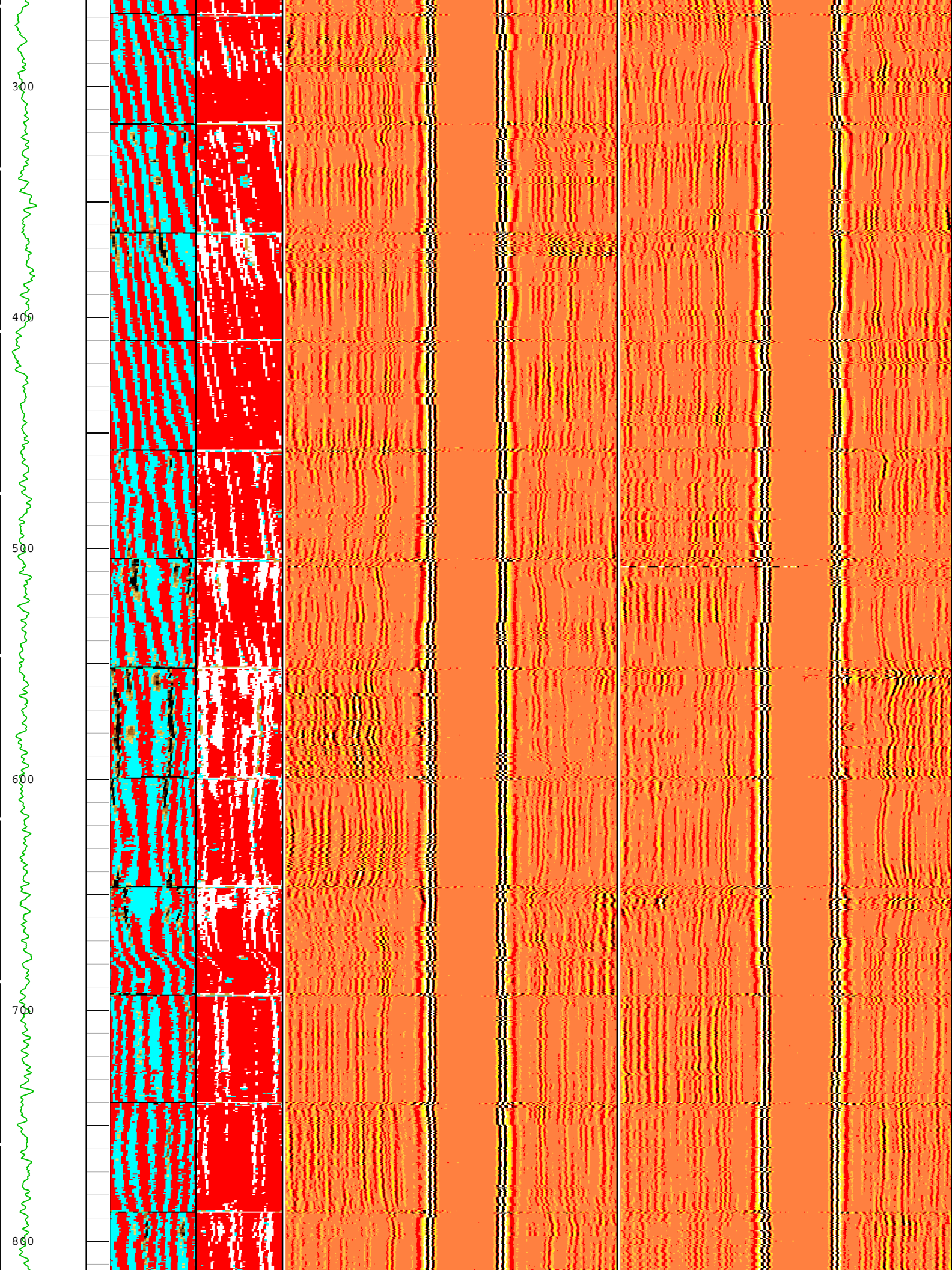
One: Log[4]:Up:S007

Description: USI IBC VDL WIDE Format: Log ( IBC VDL WIDE ) Index Scale: 2 in per 100 ft Index Unit: ft Index Type: Measured Depth Creation Date: 16-Oct-2018 15:43:22

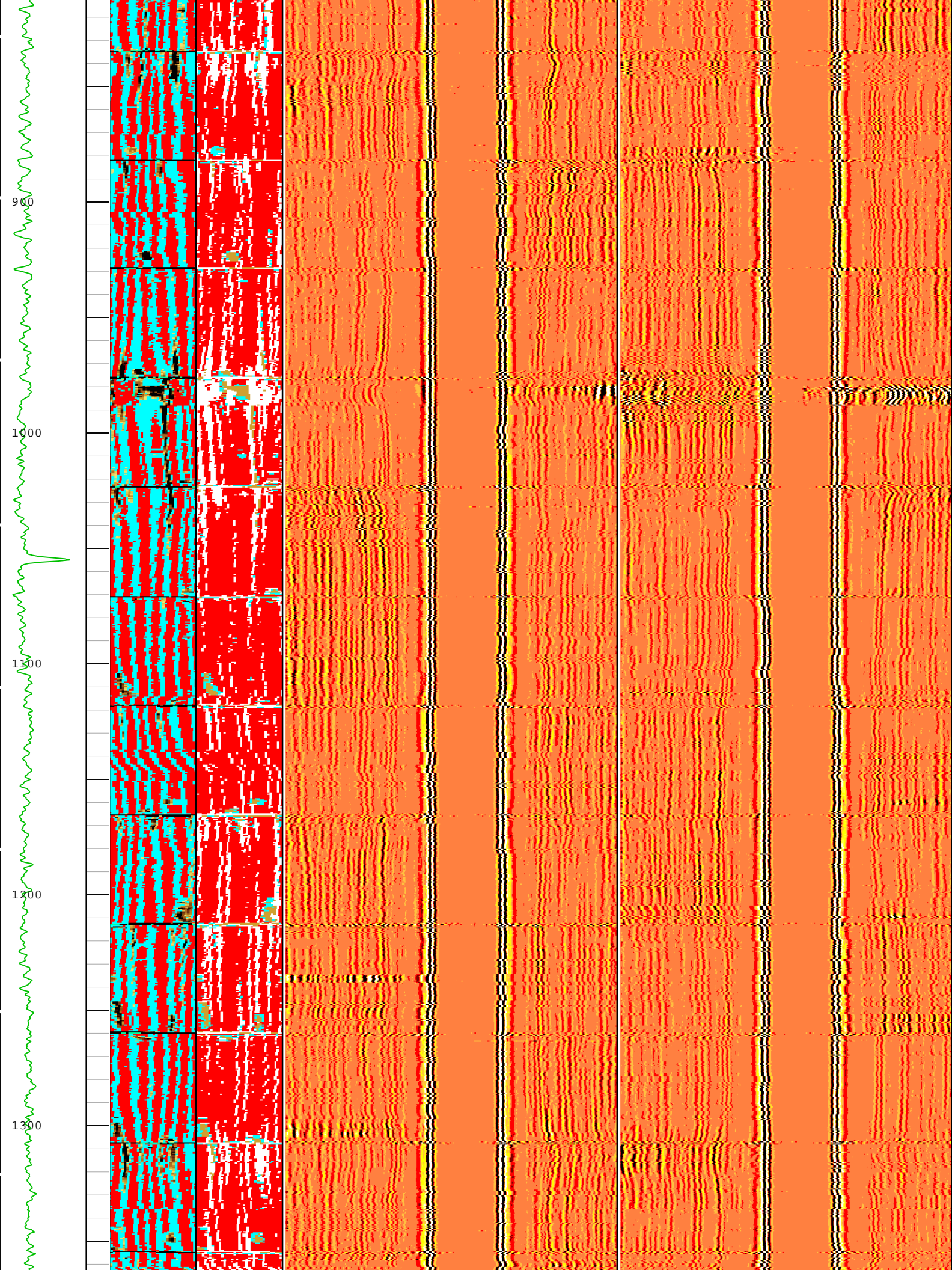
TIME\_1900 - Time Marked every 60.00 (s)



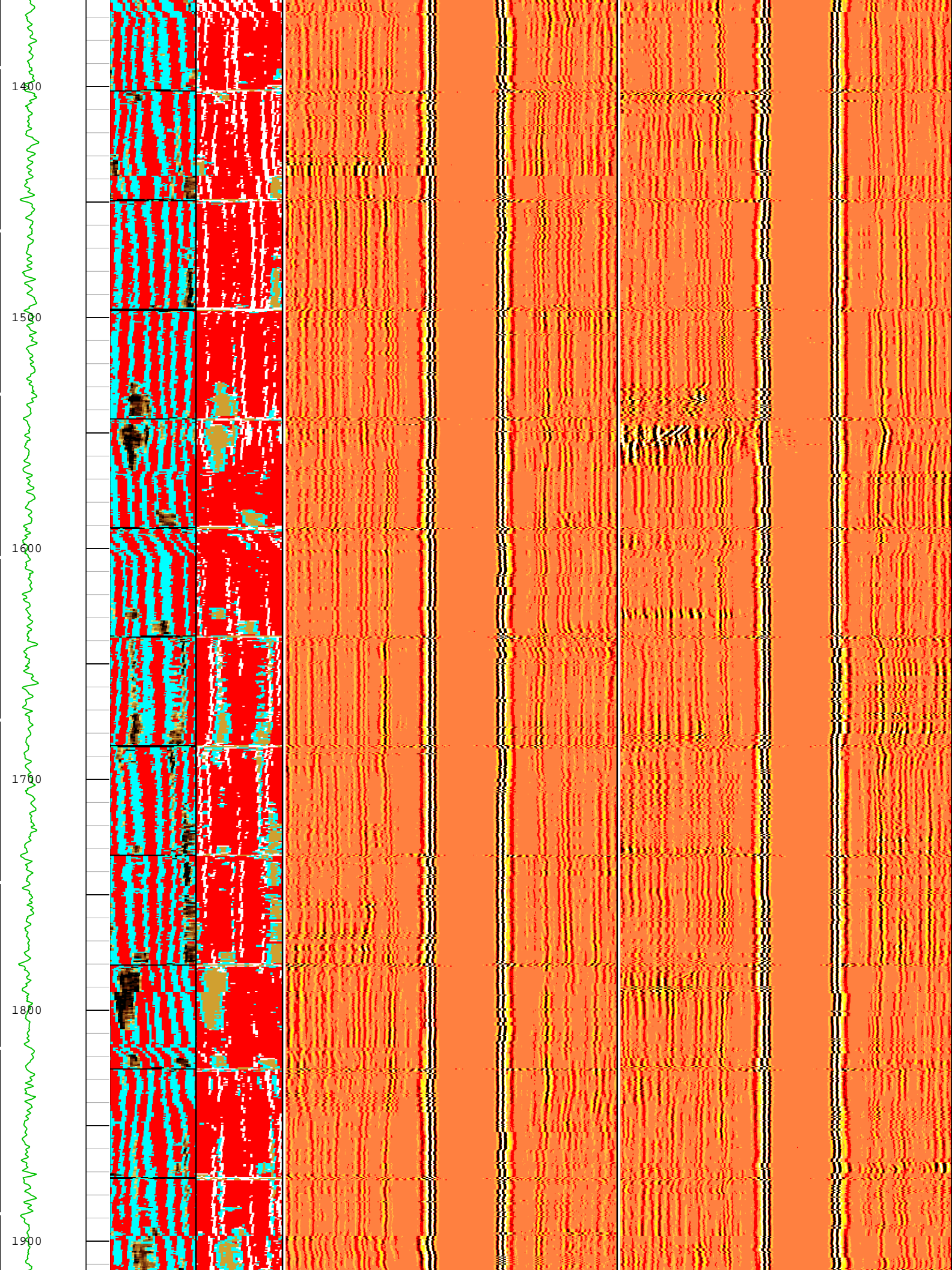




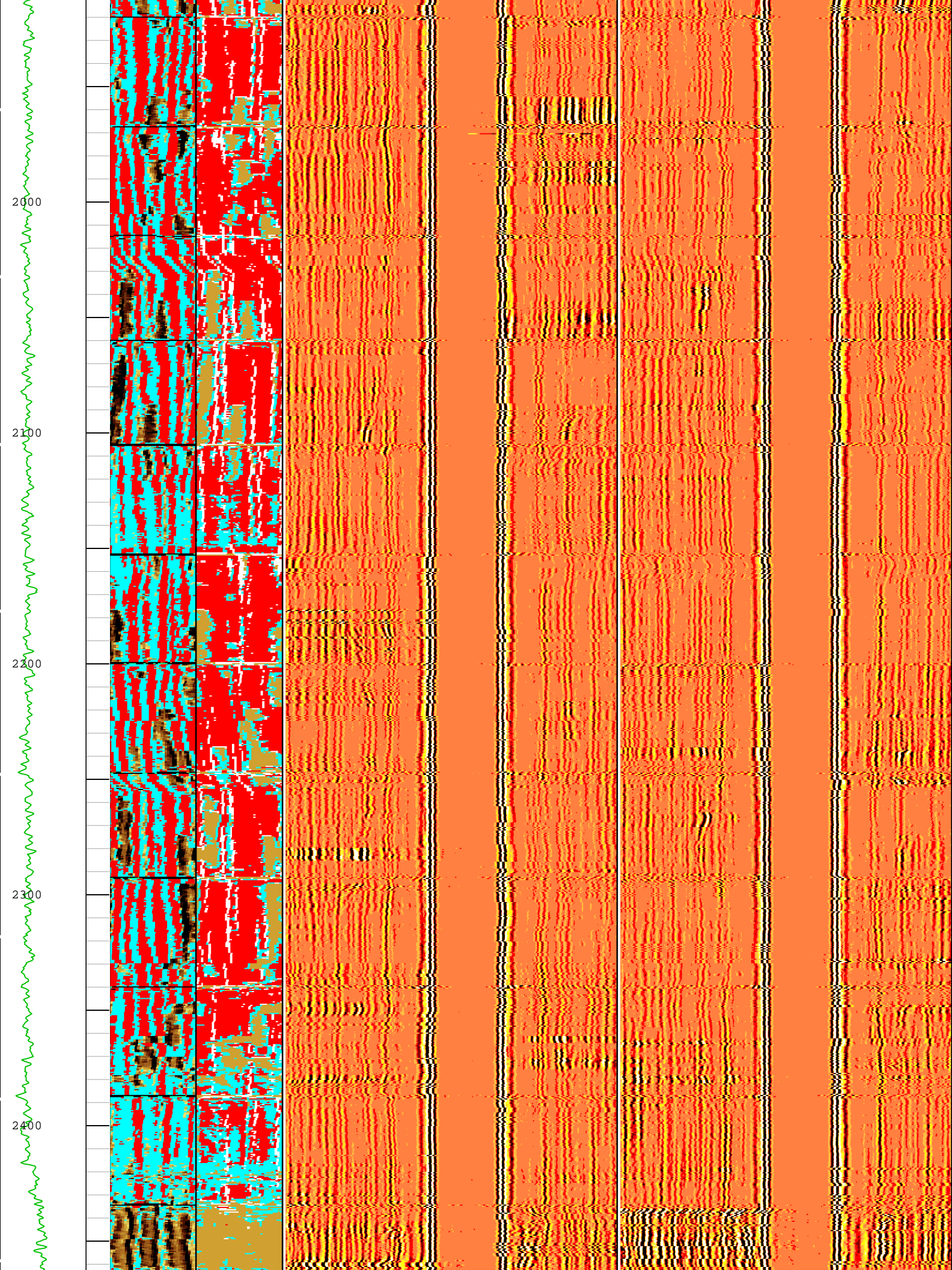




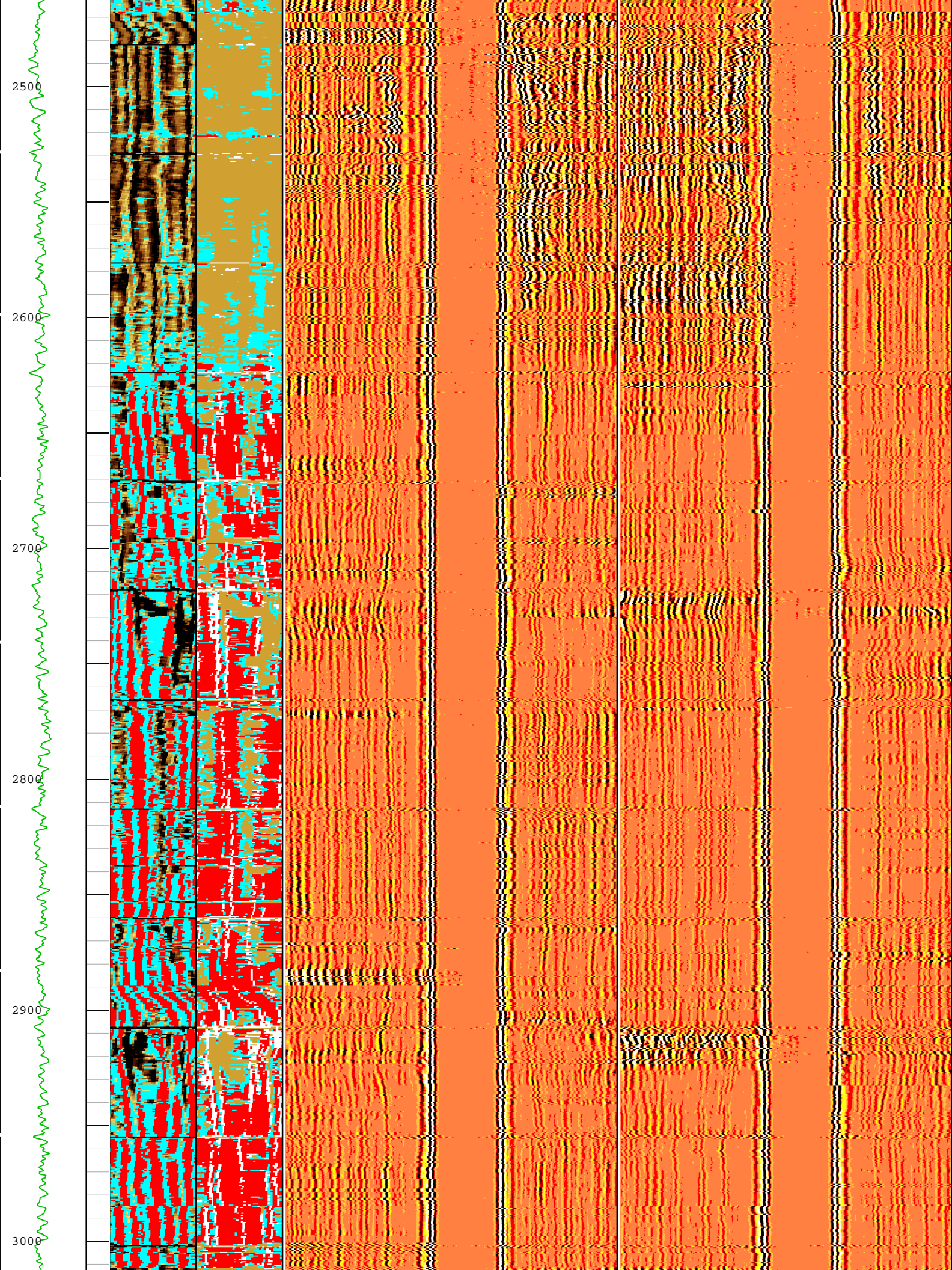




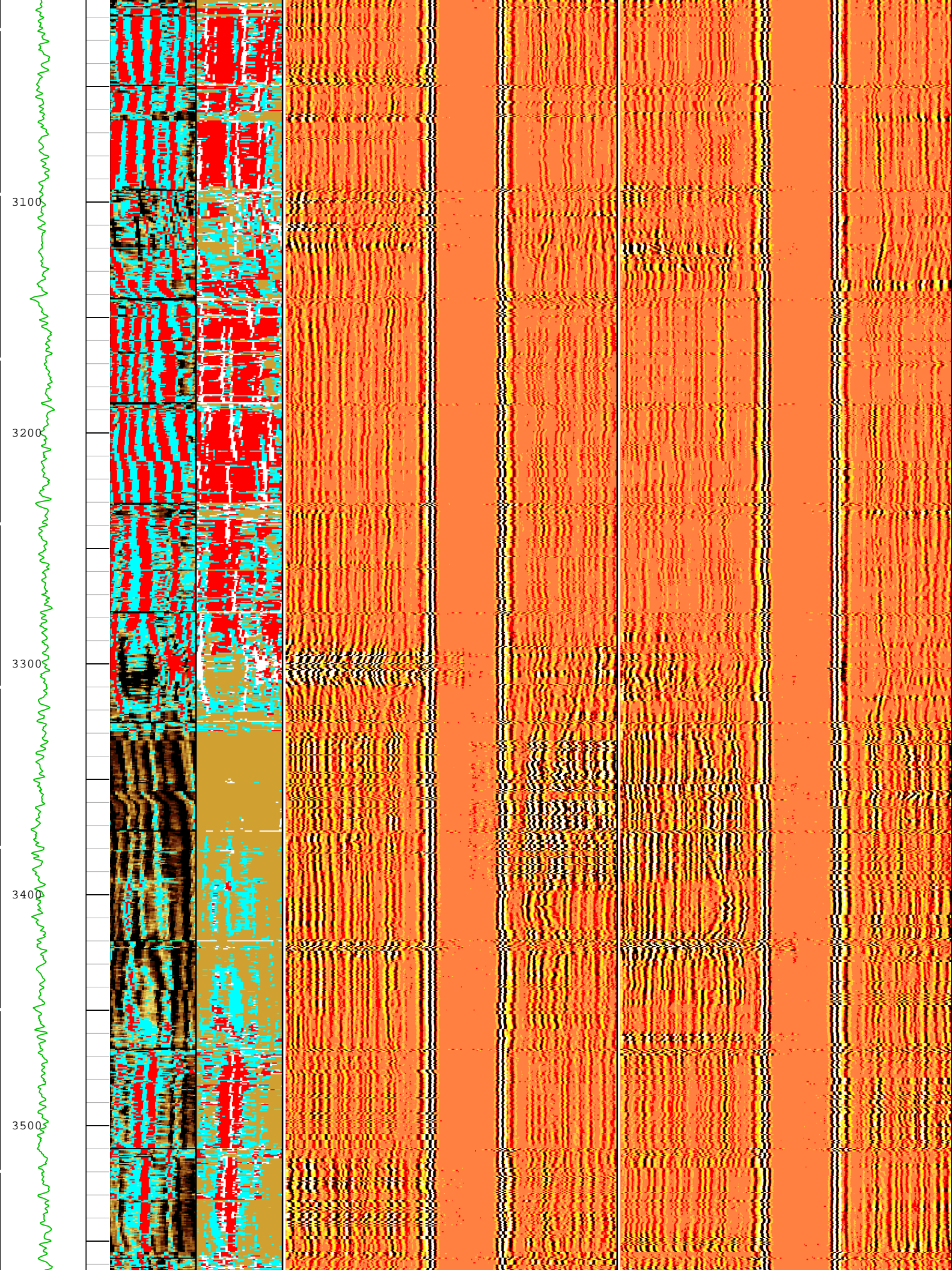




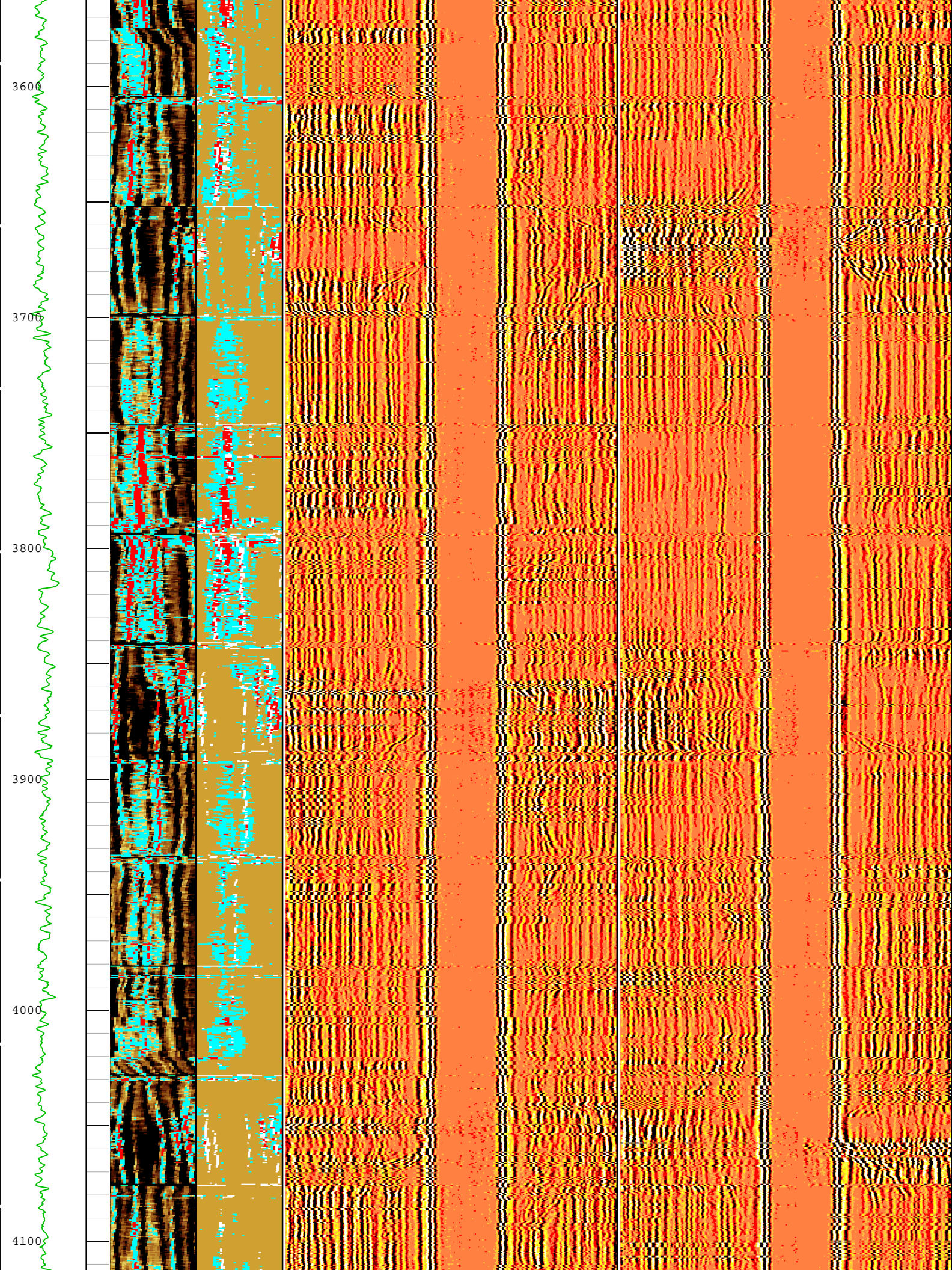




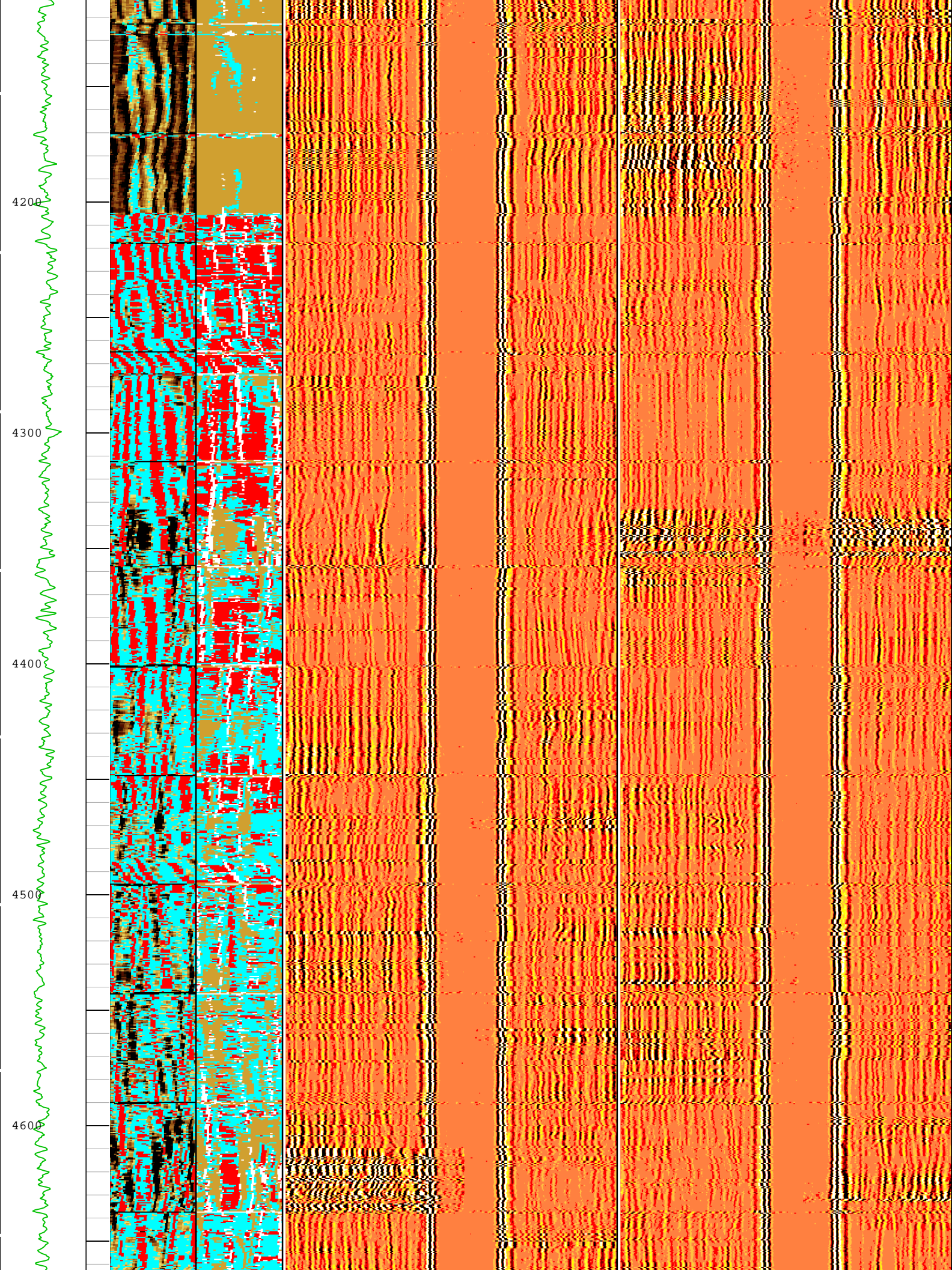




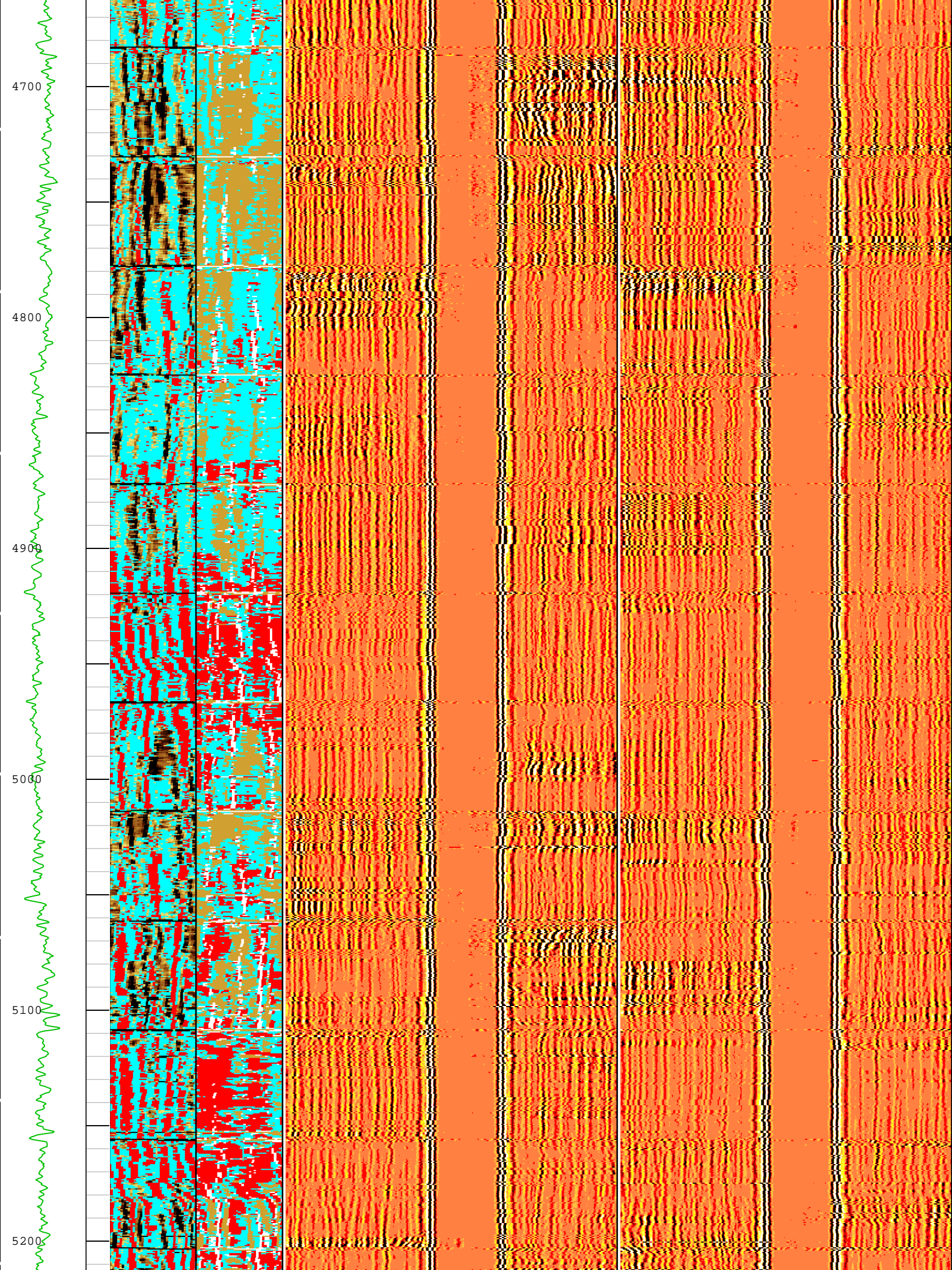




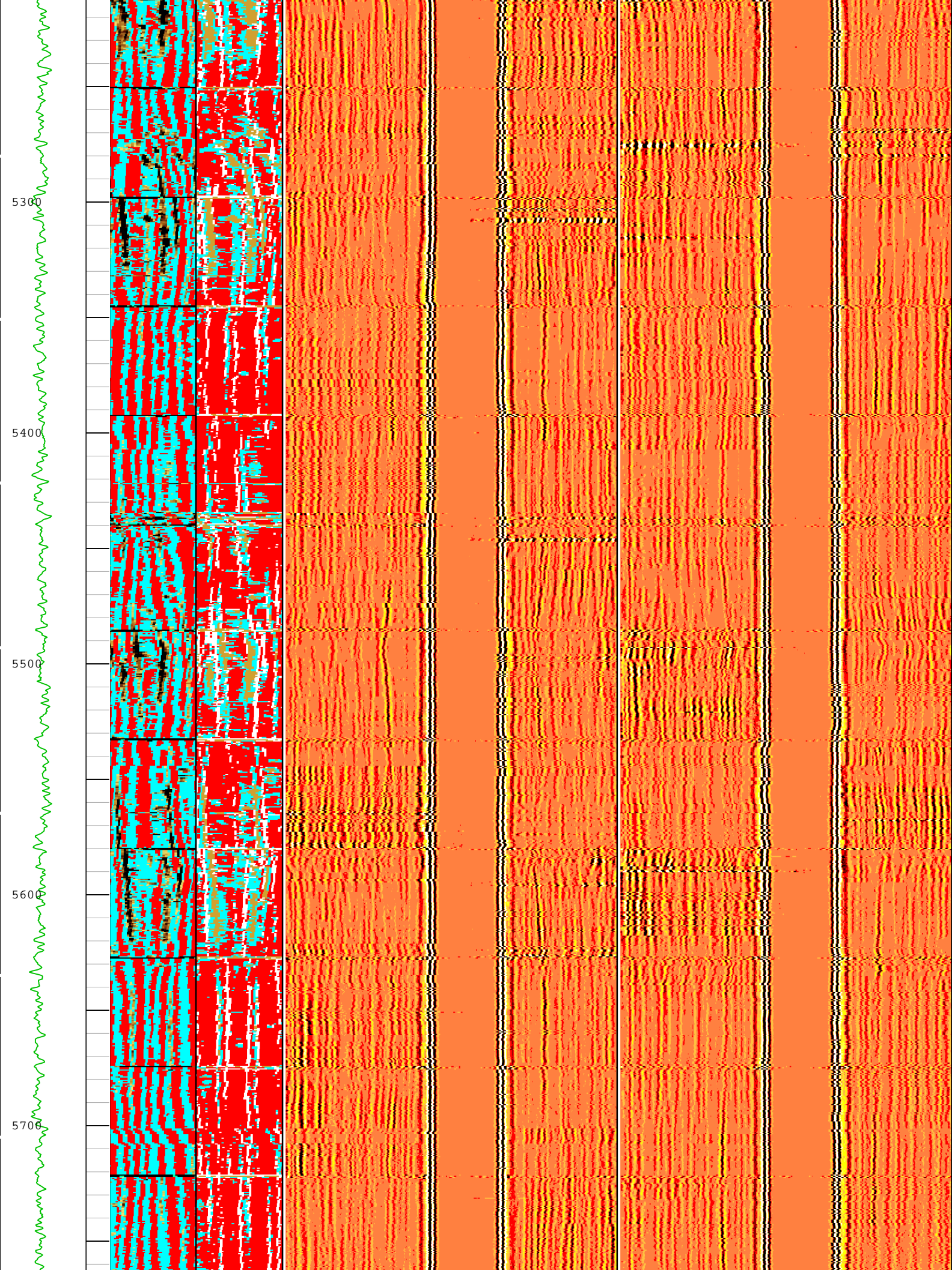




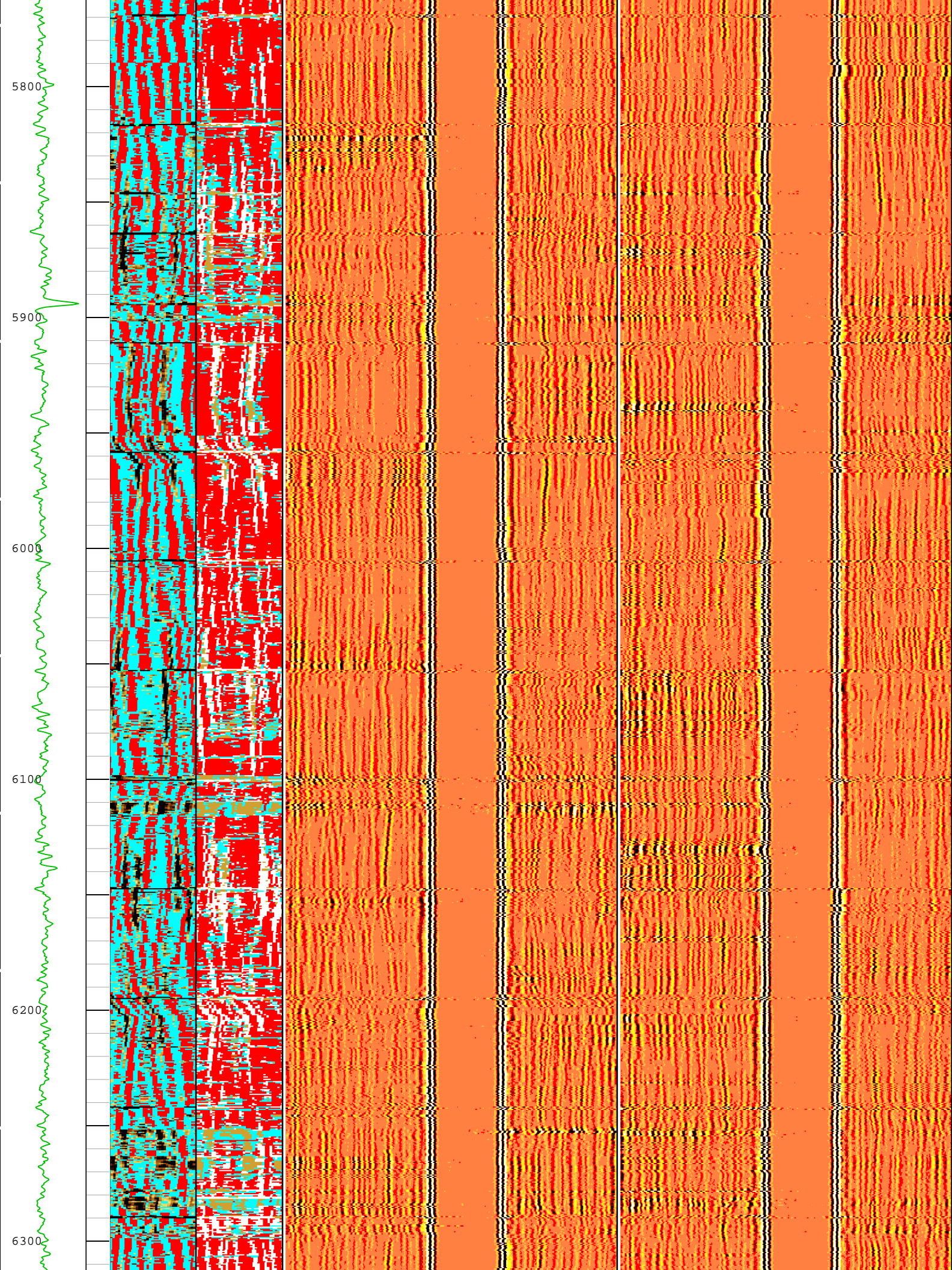




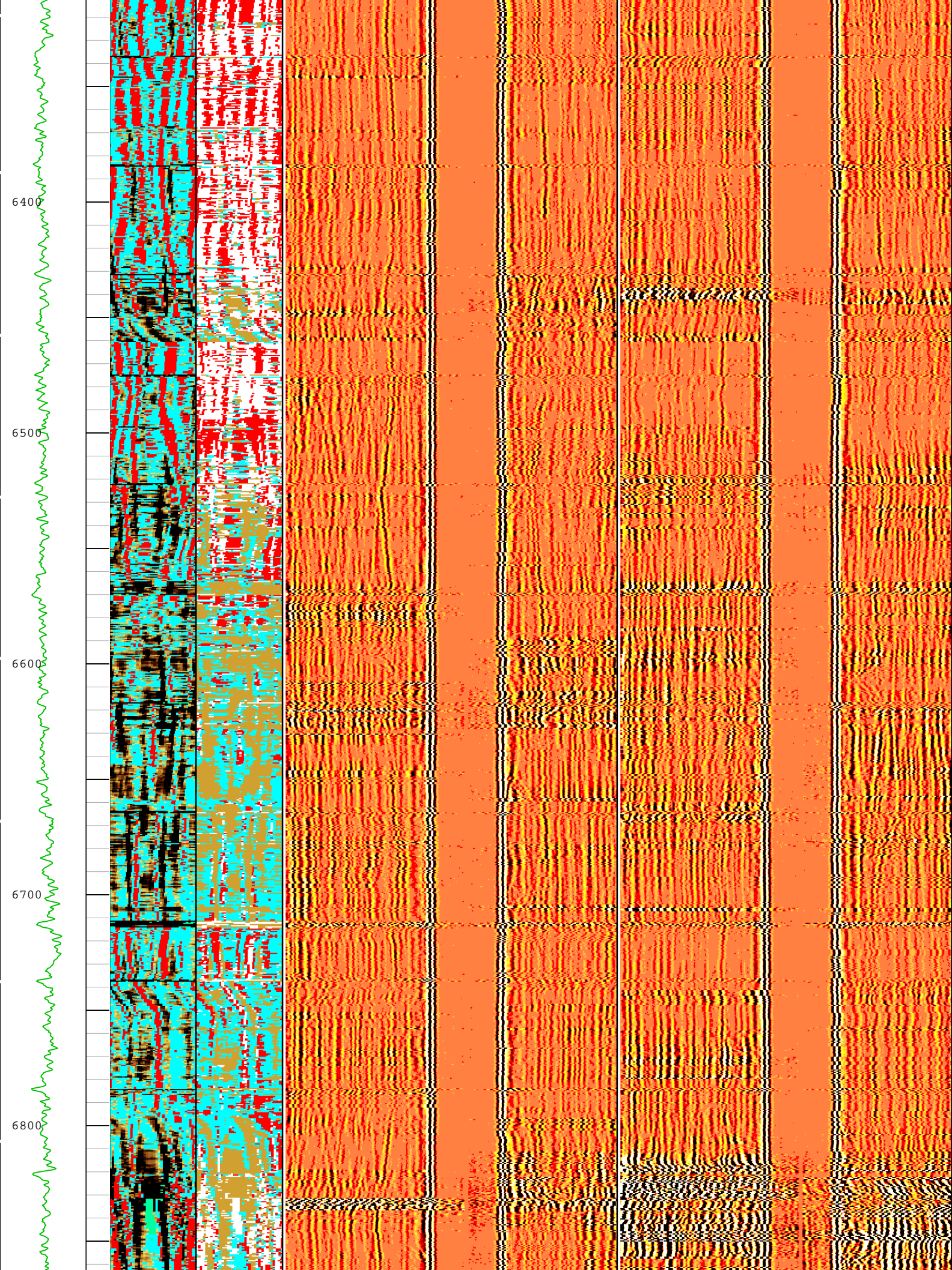




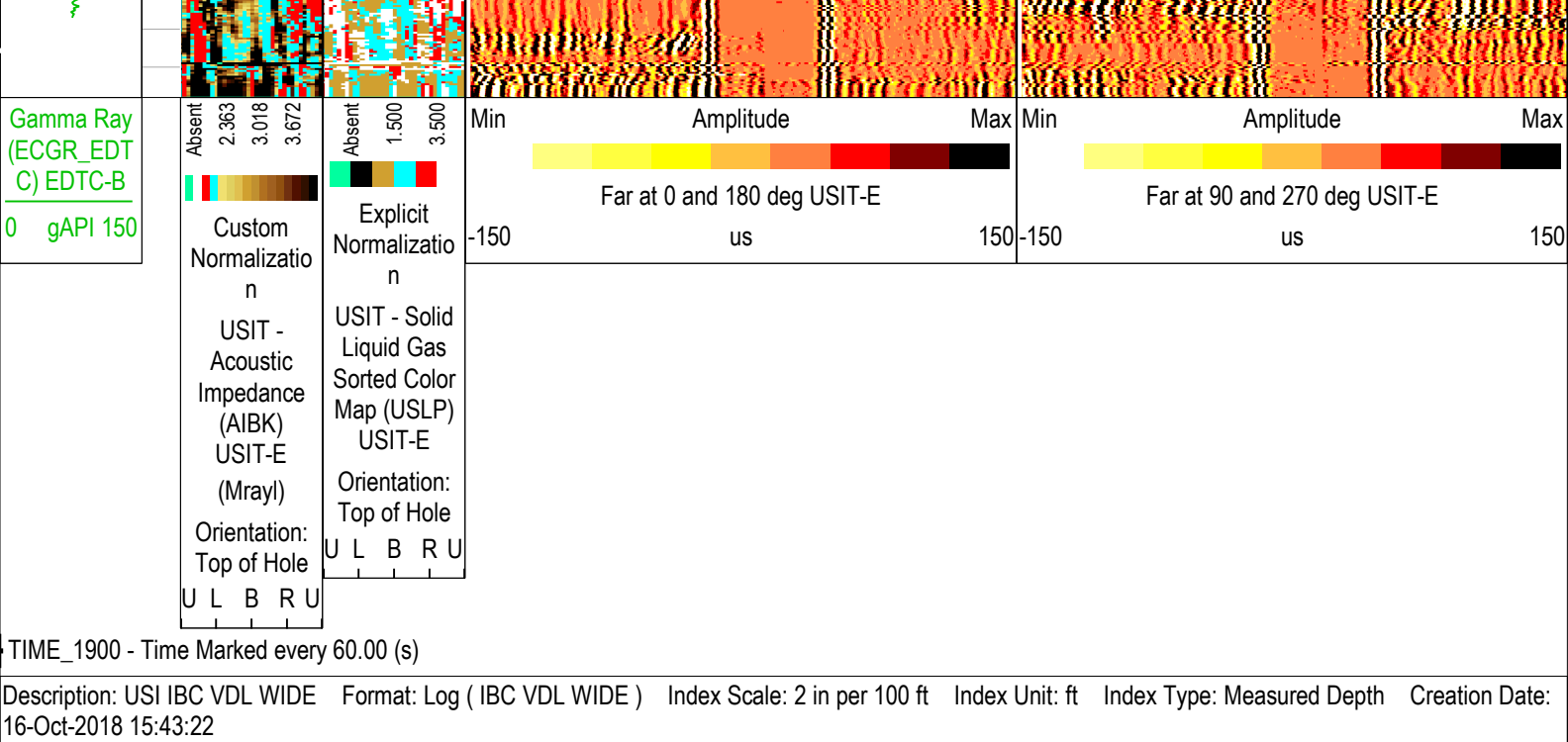














County:	Weld
State:	Colorado
Isolation Scanner	
Cement Evaluation	
VDL Wide	