

Company: Crestone Peak Resources Operating LLC

Well: Sam 30-25H-M166

Field: Wattenberg

County: Weld State: Colorado

Isolation Scanner
Cement Evaluation
VDL Wide

Weld
Wattenberg
NWSW Sec. 25, T1N, R66W
Sam 30-25H-M166
Crestone Peak Resources Operating LLC

Location:		NWSW Sec. 25, T1N, R66W SHL: 1273' FSL & 309' FWL Lat/Long: 40.01851 / -104.733857	Elev.: K.B. 5103.00 ft G.L. 5080.00 ft D.F. 5103.00 ft
Permanent Datum:	Ground Level	Kelly Bushing	Elev.: 23.00 ft above Perm.Datum
Log Measured From:	Kelly Bushing		
Drilling Measured From:	Kelly Bushing		
API Serial No. 05-123-46133	Section: 25	Township: 1N	Range: 66W

Logging Date 19-Oct-2018

Run Number ONE

Depth Driller 11892.00 ft

Schlumberger Depth 11892.00 ft

Bottom Log Interval 6650.00 ft

Top Log Interval 50.00 ft

Casing Fluid Type Fresh Water

Salinity

Density 8.4 lbm/gal

Fluid Level 8.00 ft

BIT/CASING/TUBING STRING

Bit Size 8.50 in

From 2421.00 ft

To 11892.00 ft

Casing/Tubing Size 5.5 in

Weight 20 lbm/ft

Grade J55

From 0.00 ft

To 11886.00 ft

Max Recorded Temperatures 179 degF

Logger on Bottom 19-Oct-2018 15:15:00

Unit Number 9108

Recorded By Richard Woods

Witnessed By Keith Kershnik

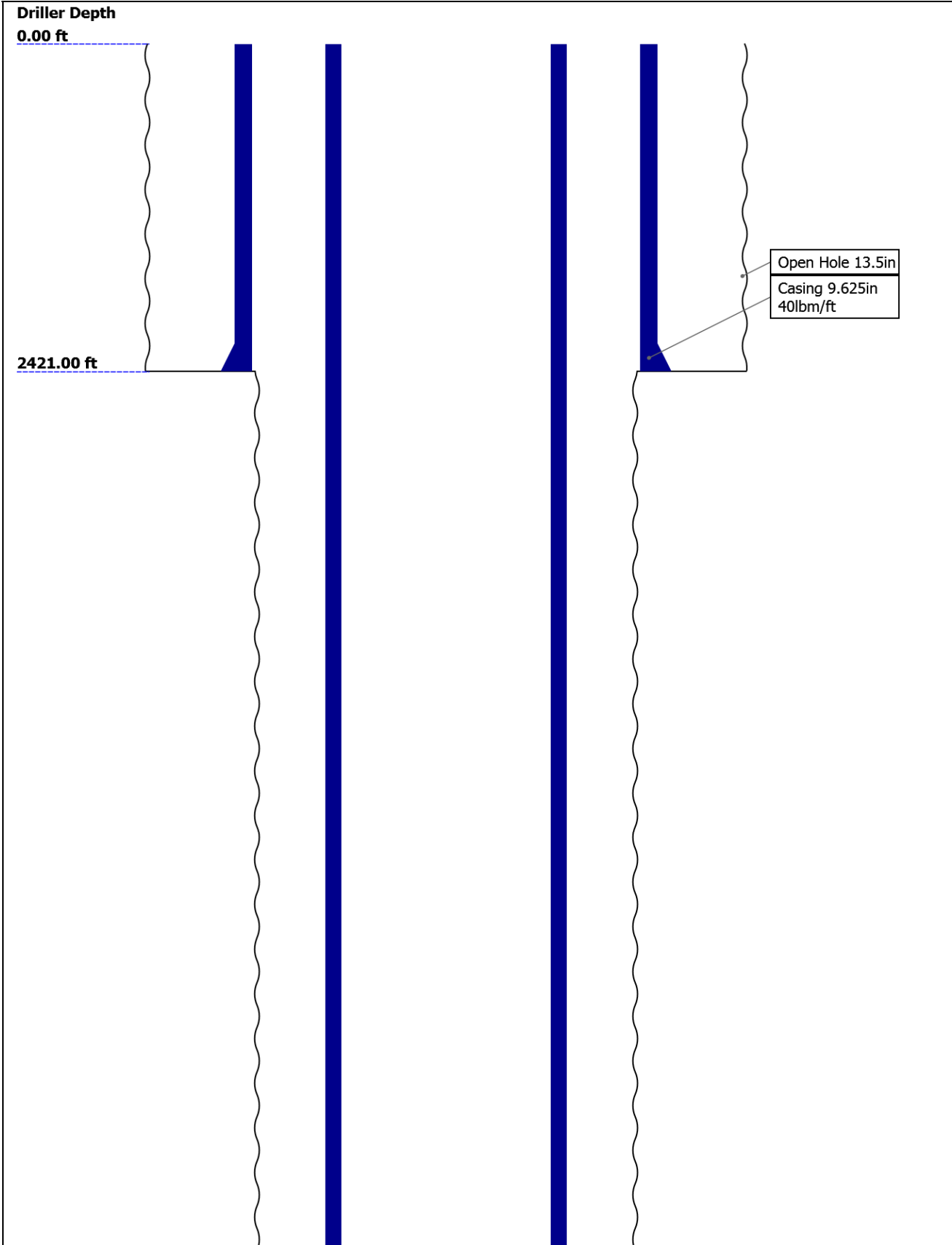
Disclaimer

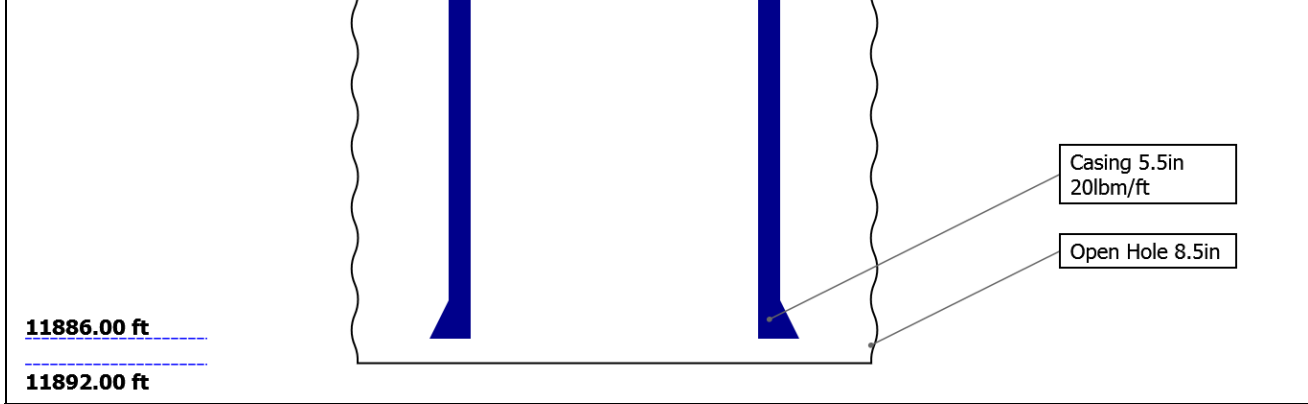
THE USE OF AND RELIANCE UPON THIS RECORDED-DATA BY THE HEREIN NAMED COMPANY (AND ANY OF ITS AFFILIATES, PARTNERS, REPRESENTATIVES, AGENTS, CONSULTANTS AND EMPLOYEES) IS SUBJECT TO THE TERMS AND CONDITIONS AGREED UPON BETWEEN SCHLUMBERGER AND THE COMPANY, INCLUDING: (a) RESTRICTIONS ON USE OF THE RECORDED-DATA; (b) DISCLAIMERS AND WAIVERS OF WARRANTIES AND REPRESENTATIONS REGARDING COMPANY'S USE AND RELIANCE UPON THE RECORDED-DATA; AND (c) CUSTOMER'S FULL AND SOLE RESPONSIBILITY FOR ANY INFERENCE DRAWN OR DECISION MADE IN CONNECTION WITH THE USE OF THIS RECORDED-DATA.

Contents

- 1. Header
- 2. Disclaimer
- 3. Contents
- 4. Well Sketch
- 5. Borehole Size/Casing/Tubing Record
- 6. Remarks and Equipment Summary
- 7. Depth Summary
- 8. ONE IBC VDL Wide 0 PSI
 - 8.1 Integration Summary
 - 8.2 Composite Summary
 - 8.3 Log (IBC VDL WIDE)
- 9. Tail

Well Sketch



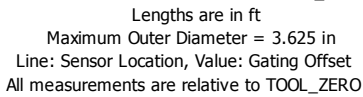


Borehole Size/Casing/Tubing Record

Bit						
Bit Size (in)	13.5	8.5				
Top Driller (ft)	0	2421				
Top Logger (ft)	0	2421				
Bottom Driller (ft)	2421	11892				
Bottom Logger (ft)	2421	11892				
Casing						
Size (in)	9.625	5.5				
Weight (lbm/ft)	40	20				
Inner Diameter (in)	8.835	4.778				
Grade	J55	J55				
Top Driller (ft)	0	0				
Top Logger (ft)	0	0				
Bottom Driller (ft)	2421	11886				
Bottom Logger (ft)	2421	11886				

Remarks and Equipment Summary

ONE: Toolstring				ONE: Remarks	
Equip name	Length	MP name	Offset	Thank you for choosing Schlumberger!	
LEH-QT	30.73			Tool string run as per tool sketch and client logging program.	
LEH-QT				5" Gemcos and in-line centralizers with small hole kit used for centralization.	
EDTC-B	27.24			All passes run under 0 PSI.	
EDTH-B				Lead: 12.5 ppg	
EDTG-A				Tail: 13.5 ppg	
EDTC-B				Spacer: 12 ppg	
AH-184[2]	20.74	CTEM	23.74		
		ACCZ	0.00		
		HV	0.00		
		Gamma	21.87		
		Ray			
		TelStatu	20.74		
		s			
AH-184[1]	18.74				
USIT-E	16.74				
ECH-MFA					
USAC-A					
USIS-A					
USSC-B					
IBCS-A					
EAP-GENC					



Depth Summary

ONE

Depth Measuring Device

Type	IDW-B
Serial Number	6455
Calibration Date	27-Jul-2018
Calibrator Serial Number	57
Calibration Cable Type	7-32ASXS
Wheel Correction 1	-1
Wheel Correction 2	1

Tension Device

Type	CMTD-B/A
Serial Number	1703
Calibration Date	29-Jul-2018
Calibrator Serial Number	88310A
Number of Calibration Points	10
Calibration Root Mean Square Error	6
Calibration Peak Error	9

Logging Cable

Type	7-32AS-XS
Serial Number	
Length	21111.00 ft
Conveyance Type	Wireline
Rig Type	Crane USA

ONE:Depth Control Parameters

Log Sequence	First Log In the Well
Rig Up Length At Surface	
Rig Up Length At Bottom	
Rig Up Length Correction	

Depth Control Remarks

All Schlumberger depth control procedures followed.
IDW used for primary depth control.
Zchart used for secondary depth control.
Logs correlated to down log.

Stretch Correction
Tool Zero Check At Surface

ONE

IBC VDL Wide 0 PSI

Pass Summary

Run Name	Pass Objective	Direction	Top	Bottom	Start	Stop	DSC Mode	Depth Shift	Include Parallel Data
ONE	Log[3]:Up	Up	41.07 ft	6554.74 ft	19-Oct-2018 2:45:13 PM	19-Oct-2018 4:23:09 PM	ON	3.94 ft	Yes

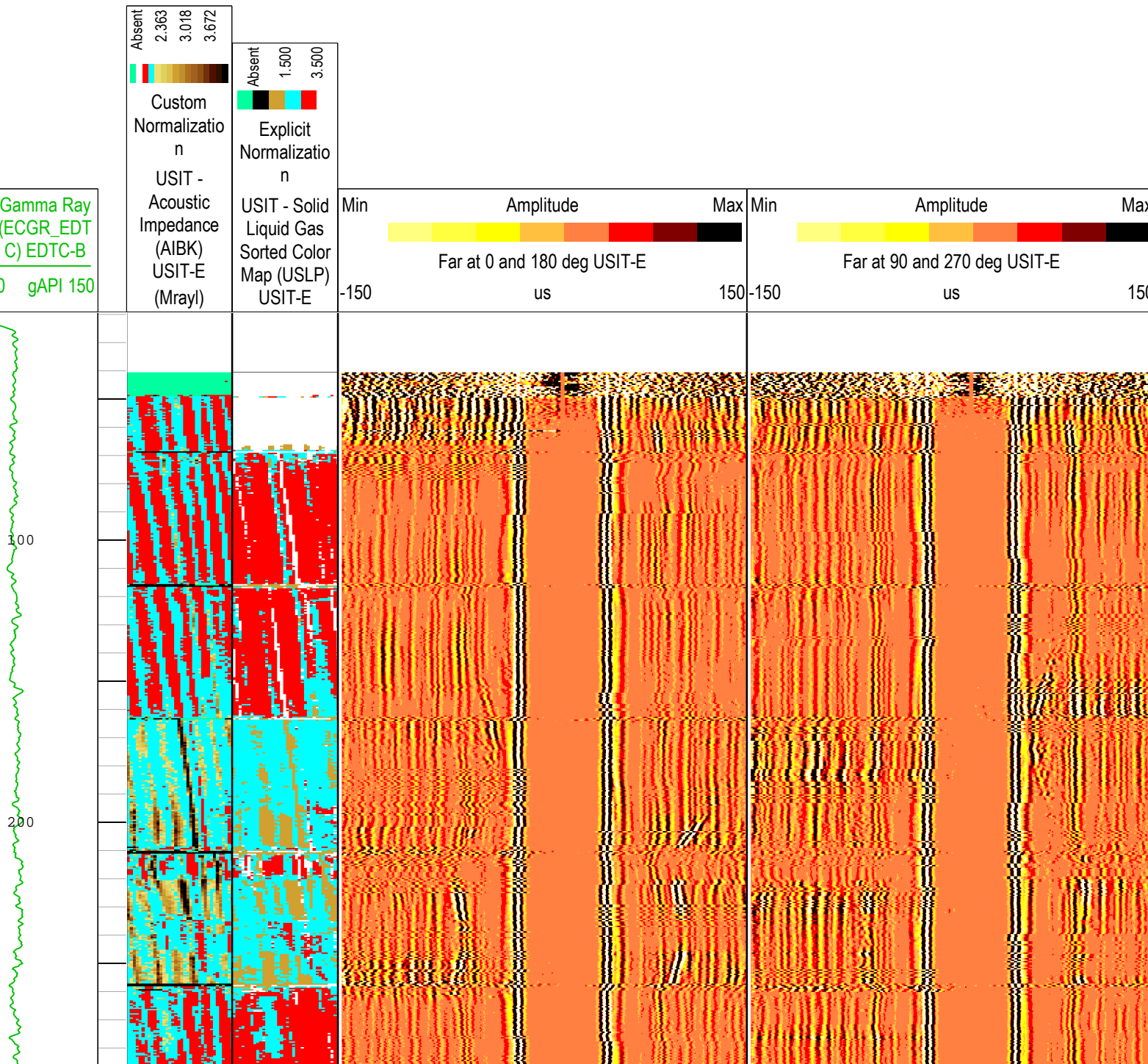
All depths are referenced to toolstring zero

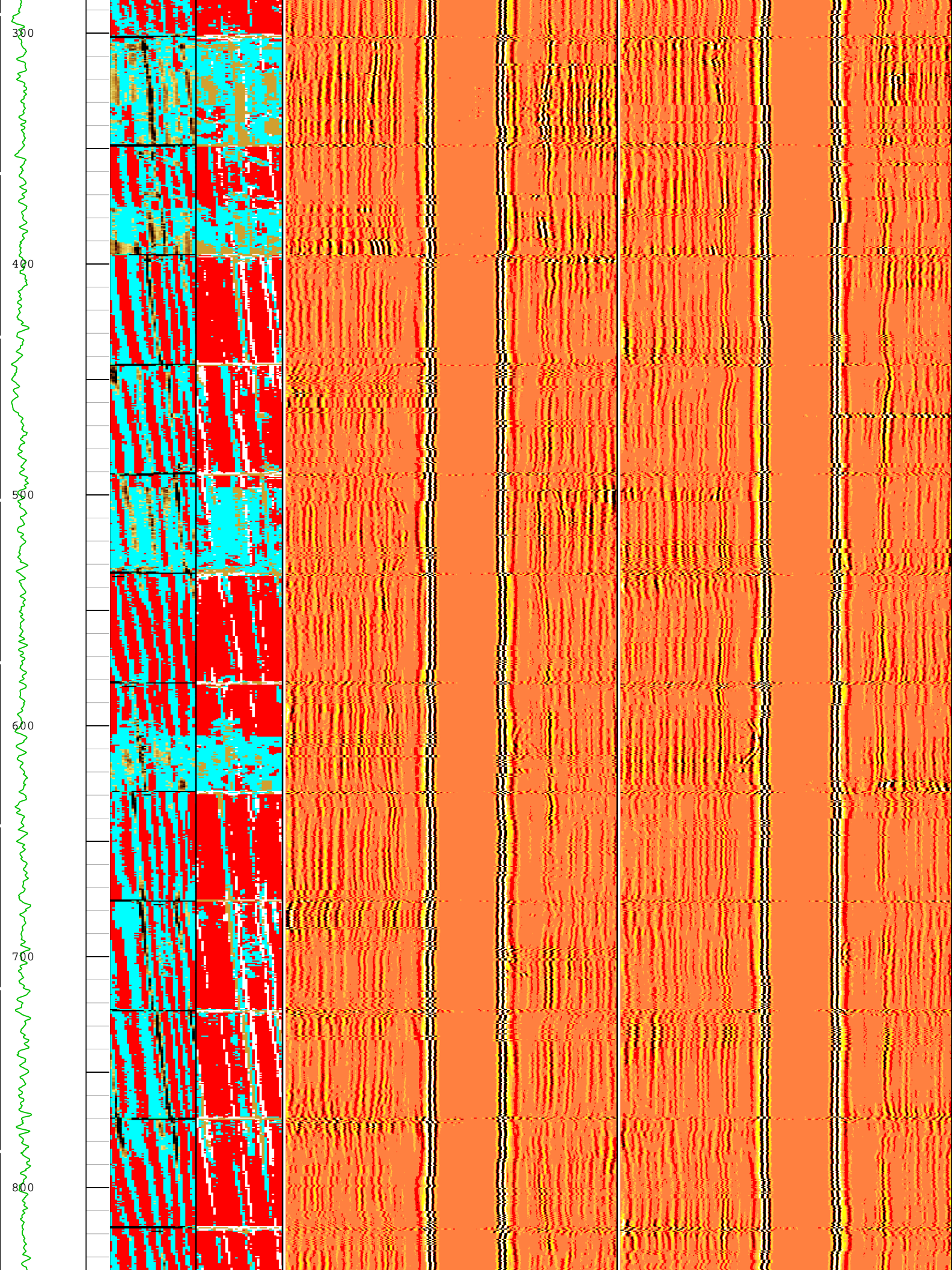
Log

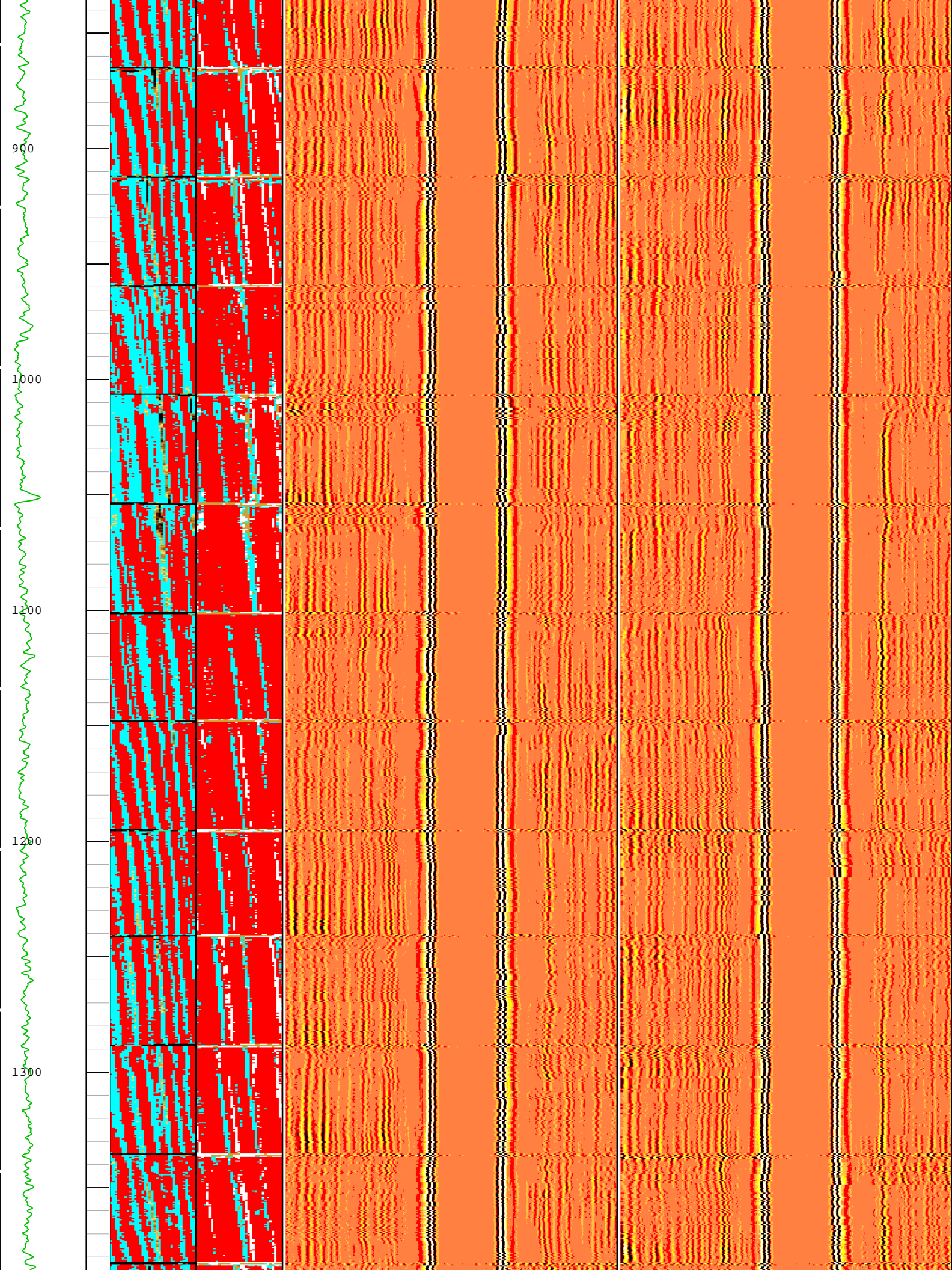
Company:Crestone Peak Resources Operating LLC Well:Sam 3O-25H-M166
ONE: Log[3]:Up:S003

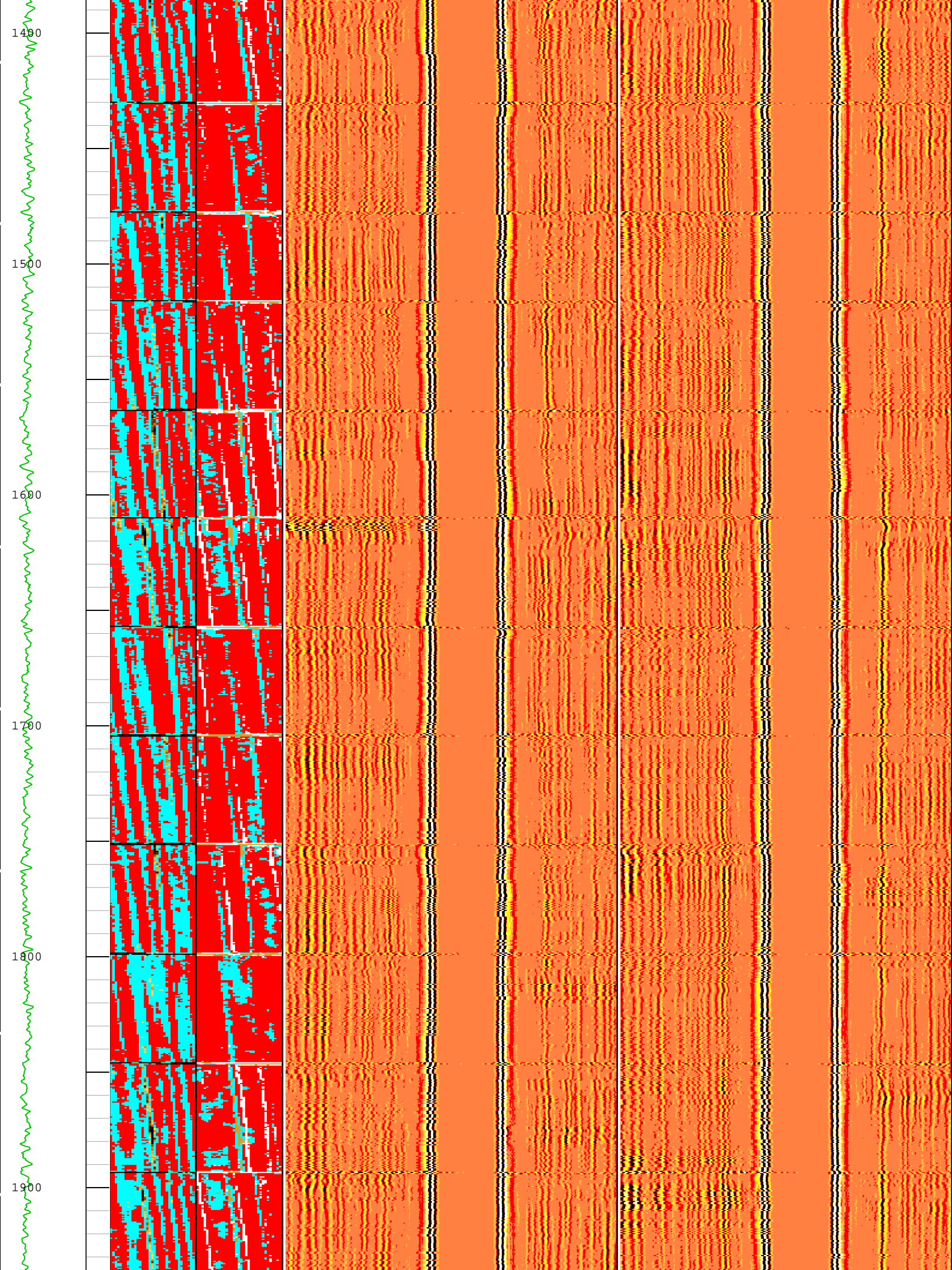
Description: USI IBC VDL WIDE Format: Log (IBC VDL WIDE) Index Scale: 2 in per 100 ft Index Unit: ft Index Type: Measured Depth Creation Date: 19-Oct-2018 17:35:57

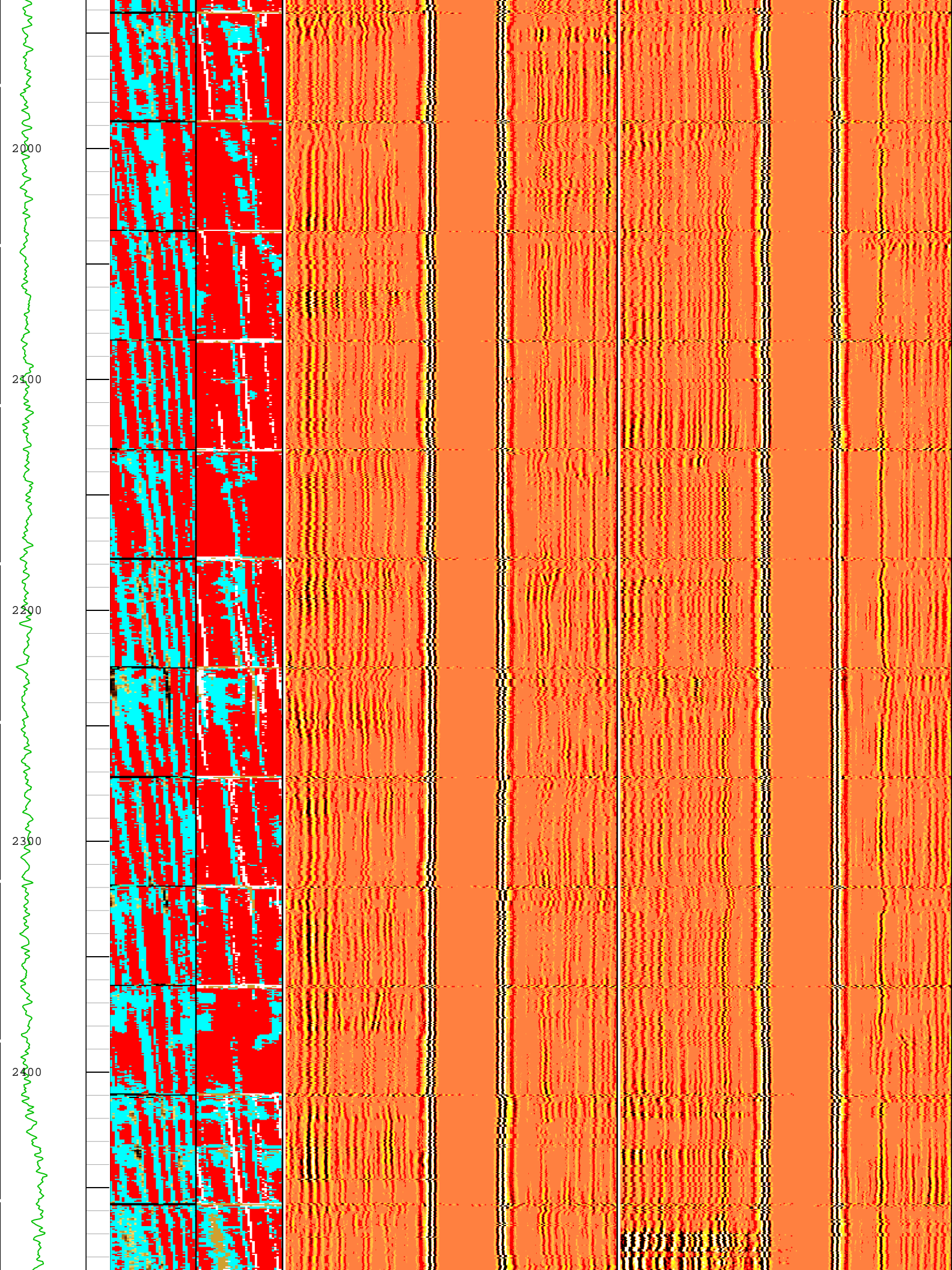
TIME_1900 - Time Marked every 60.00 (s)

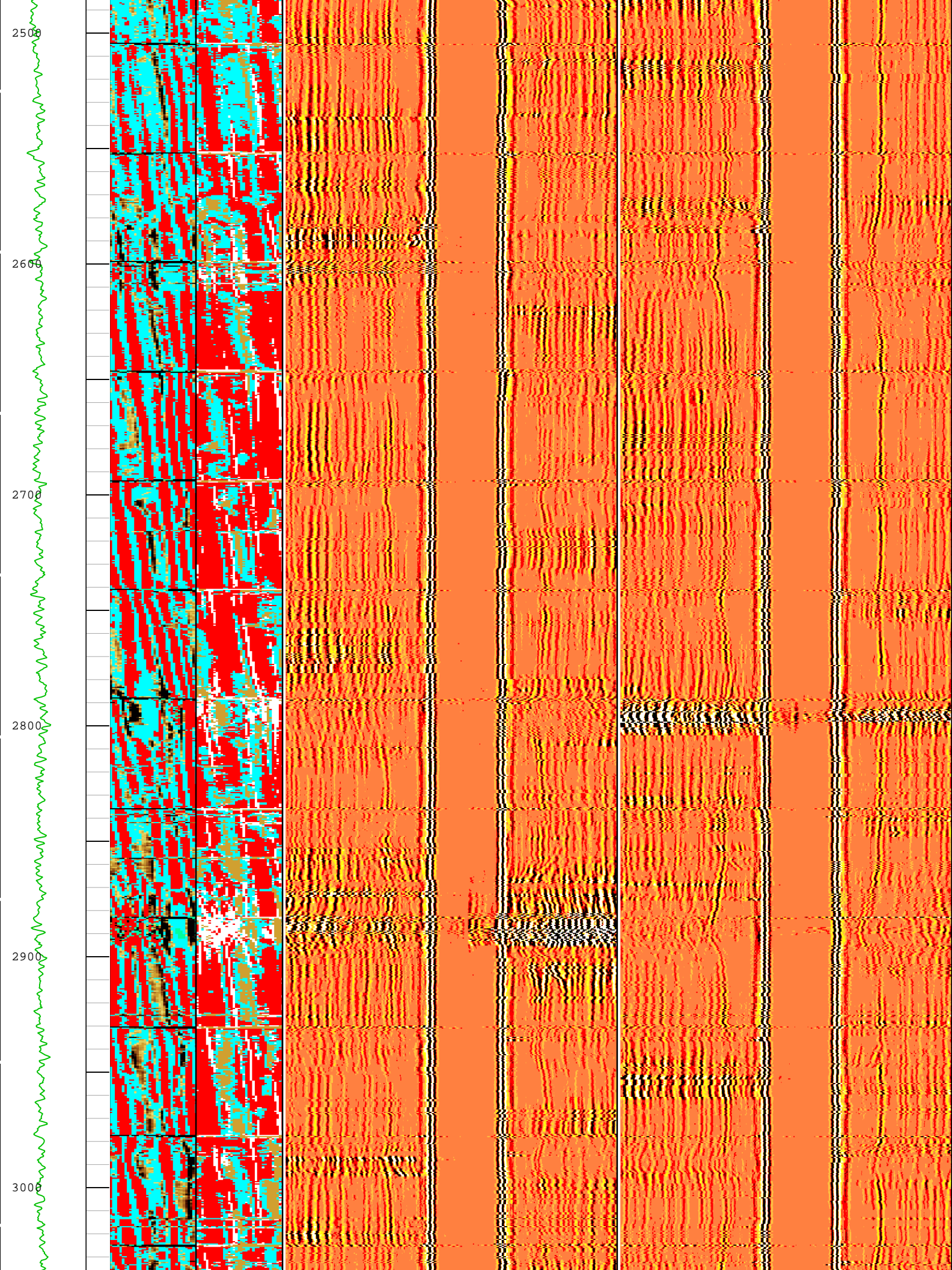


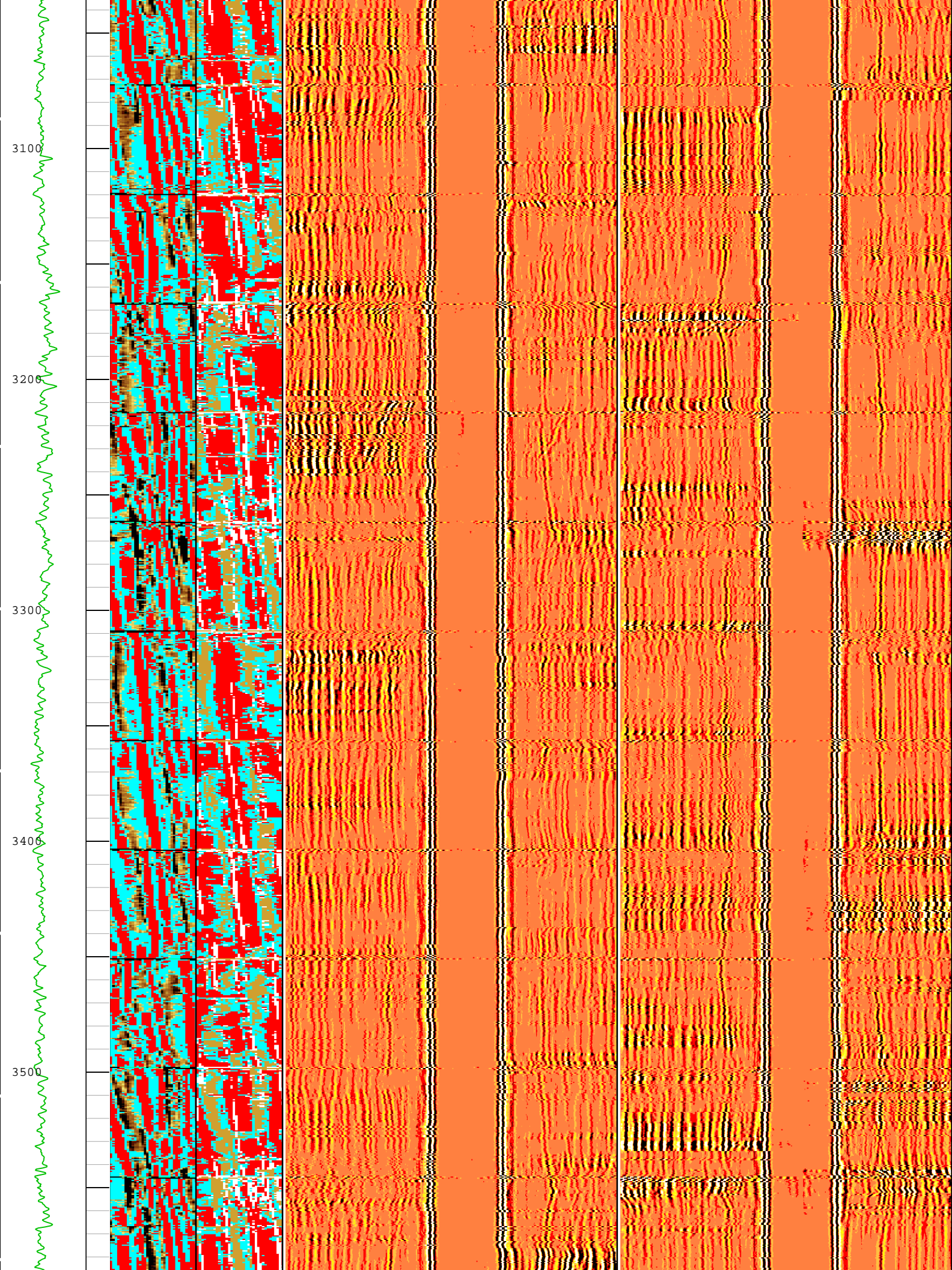


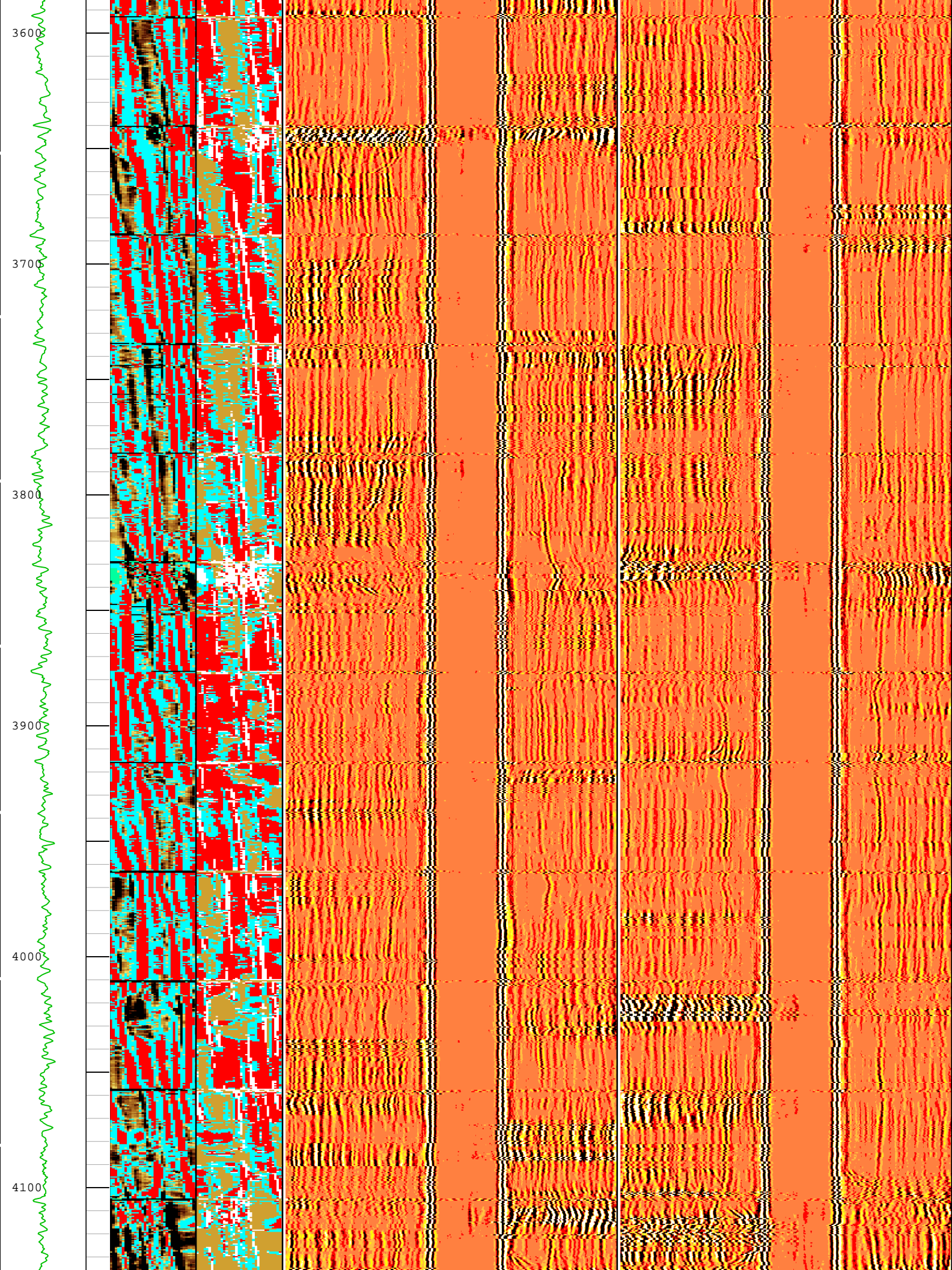


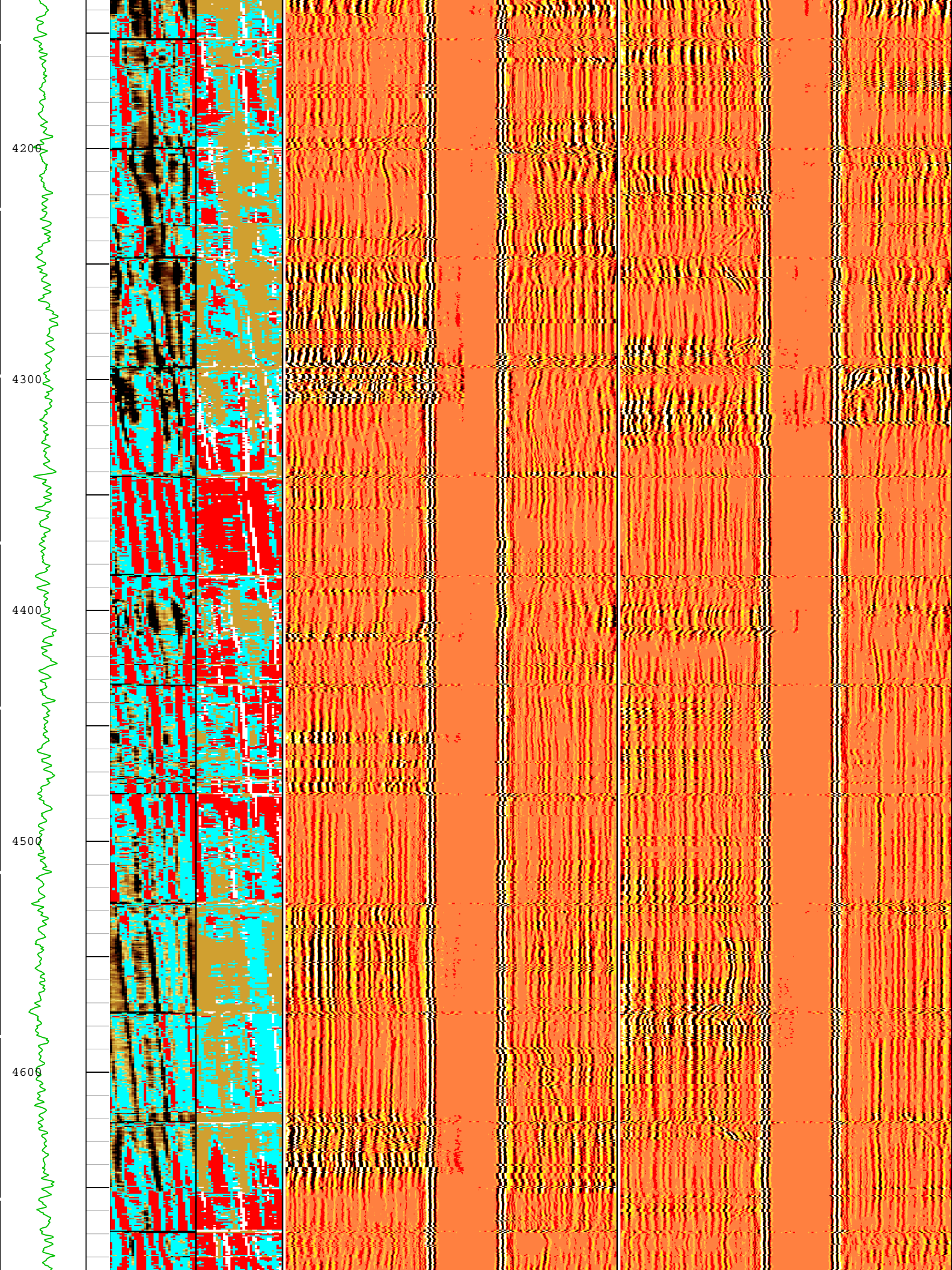


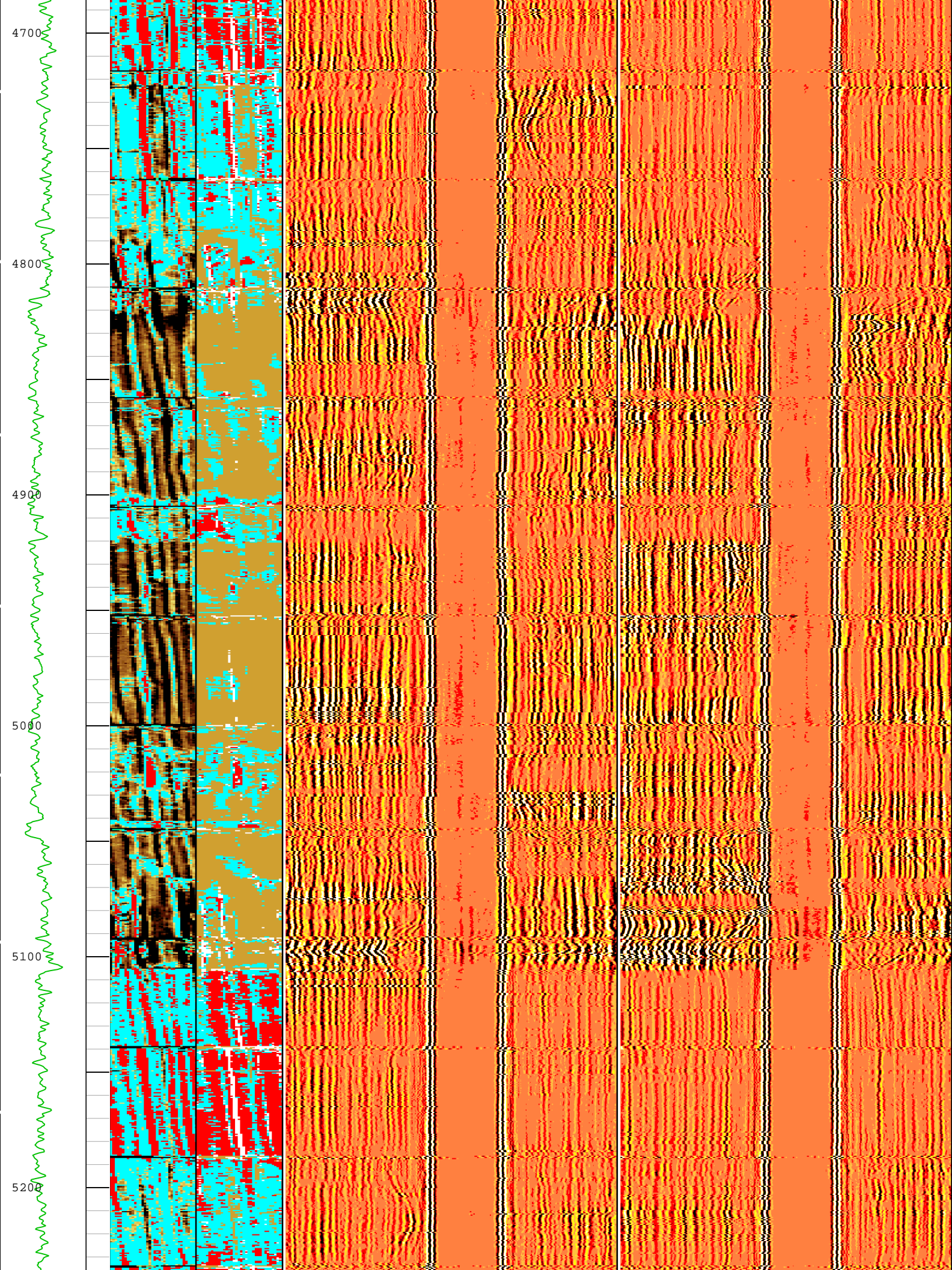


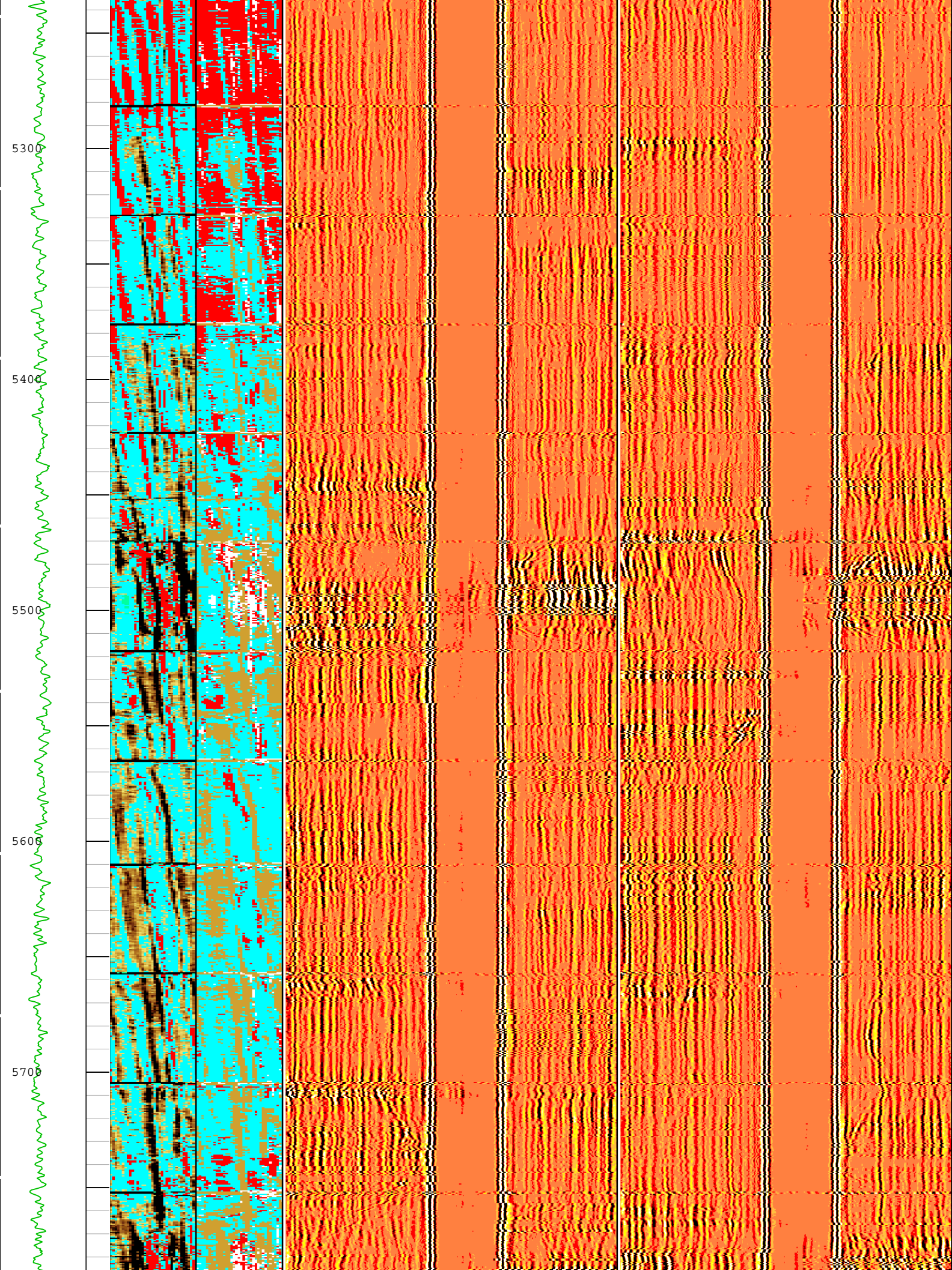


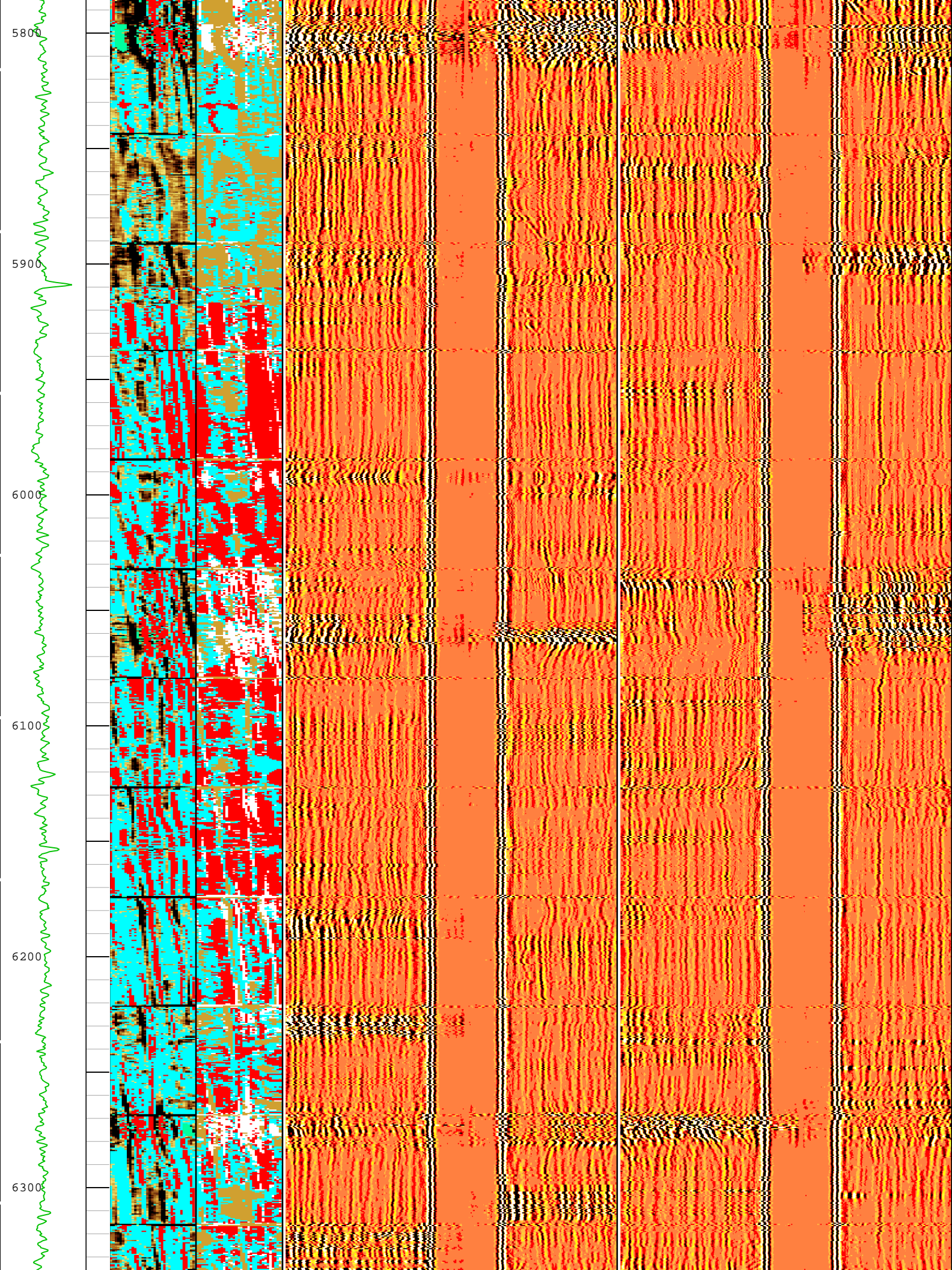


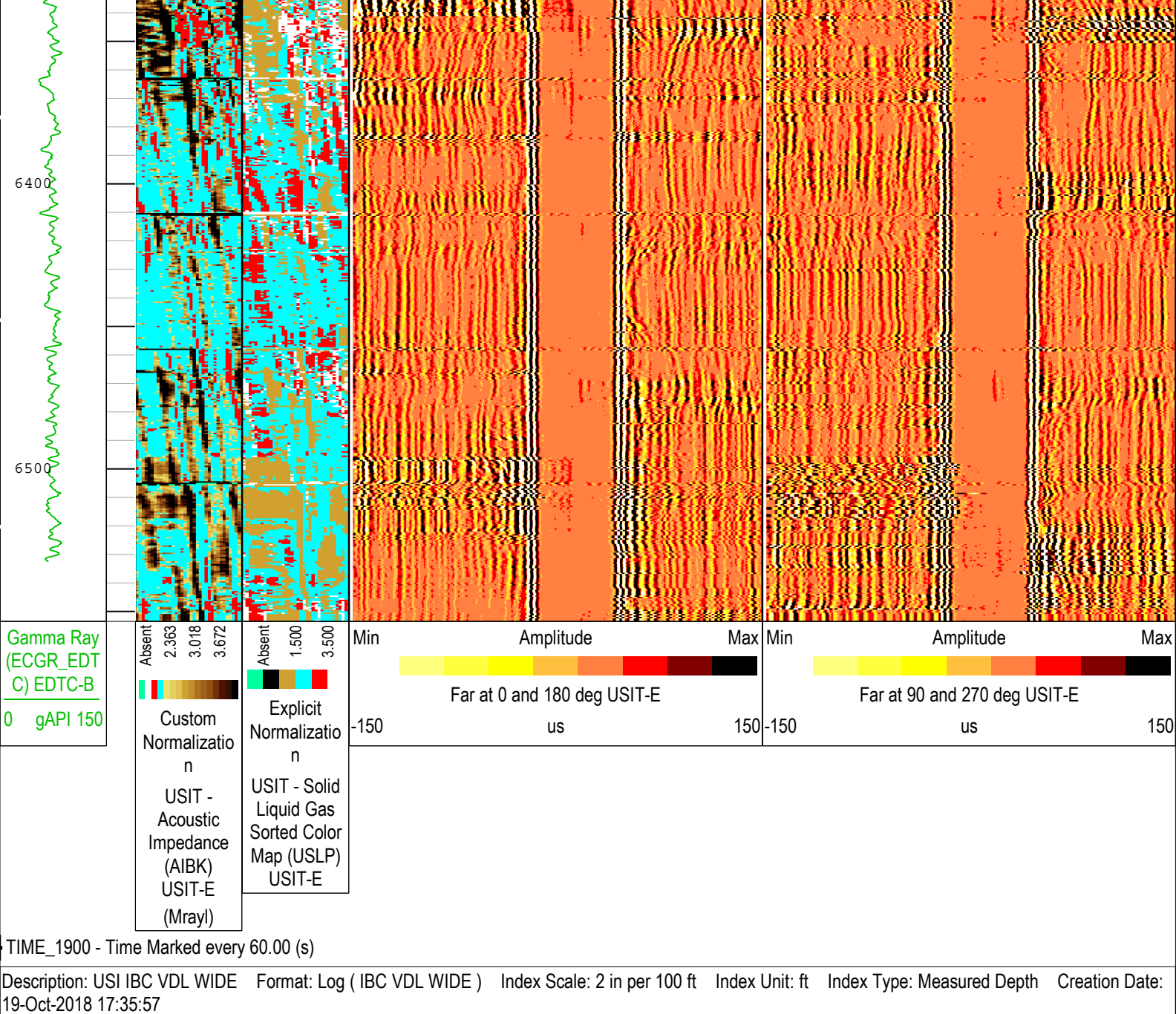












Company: Crestone Peak Resources Operating LLC

Schlumberger

Well: Sam 3O-25H-M166

Field: Wattenberg

County: Weld

State: Colorado

Isolation Scanner
Cement Evaluation

