

Company: Crestone Peak Resources Operating LLC

Well: Sam 3M-25H-M166

Field: Wattenberg

County: Weld State: Colorado

Isolation Scanner
Cement Evaluation
VDL Wide

County:	Weld			
Field:	Wattenberg			
Location:	NWSW Sec. 25, T1N, R66W			
Well:	Sam 3M-25H-M166			
Company:	Crestone Peak Resources Operating LLC			
Location:				
NWSW Sec. 25, T1N, R66W			Elev.:	K.B. 5103.00 ft
SHL: 1293' FSL & 310' FWL				G.L. 5080.00 ft
Lat/Long: 40.018565 / -104.733856				D.F. 5103.00 ft
Permanent Datum:		Ground Level	Elev.:	5080.00 f
Log Measured From:		Kelly Bushing	23.00 ft	above Perm.Datum
Drilling Measured From:		Kelly Bushing		
API Serial No.		Section:	Township:	Range:
05-123-46130		25	1N	66W
Logging Date	19-Oct-2018			

Run Number	ONE		
Depth Driller	11925.00 ft		
Schlumberger Depth	11925.00 ft		
Bottom Log Interval	6610.00 ft		
Top Log Interval	60.00 ft		
Casing Fluid Type	Fresh Water		
Salinity			
Density	8.4 lbm/gal		
Fluid Level	8.00 ft		
BIT/CASING/TUBING STRING			
Bit Size	8.50 in		
From	2423.00 ft		
To	11925.00 ft		
Casing/Tubing Size	5.5 in		
Weight	20 lbm/ft		
Grade	J55		
From	0.00 ft		
To	11913.00 ft		
Max Recorded Temperatures	176 degF		
Logger on Bottom	19-Oct-2018	12:00:00	
Unit Number	9108	Fort Morgan, CO	
Recorded By	Richard Woods		
Witnessed By	Keith Kershnik		

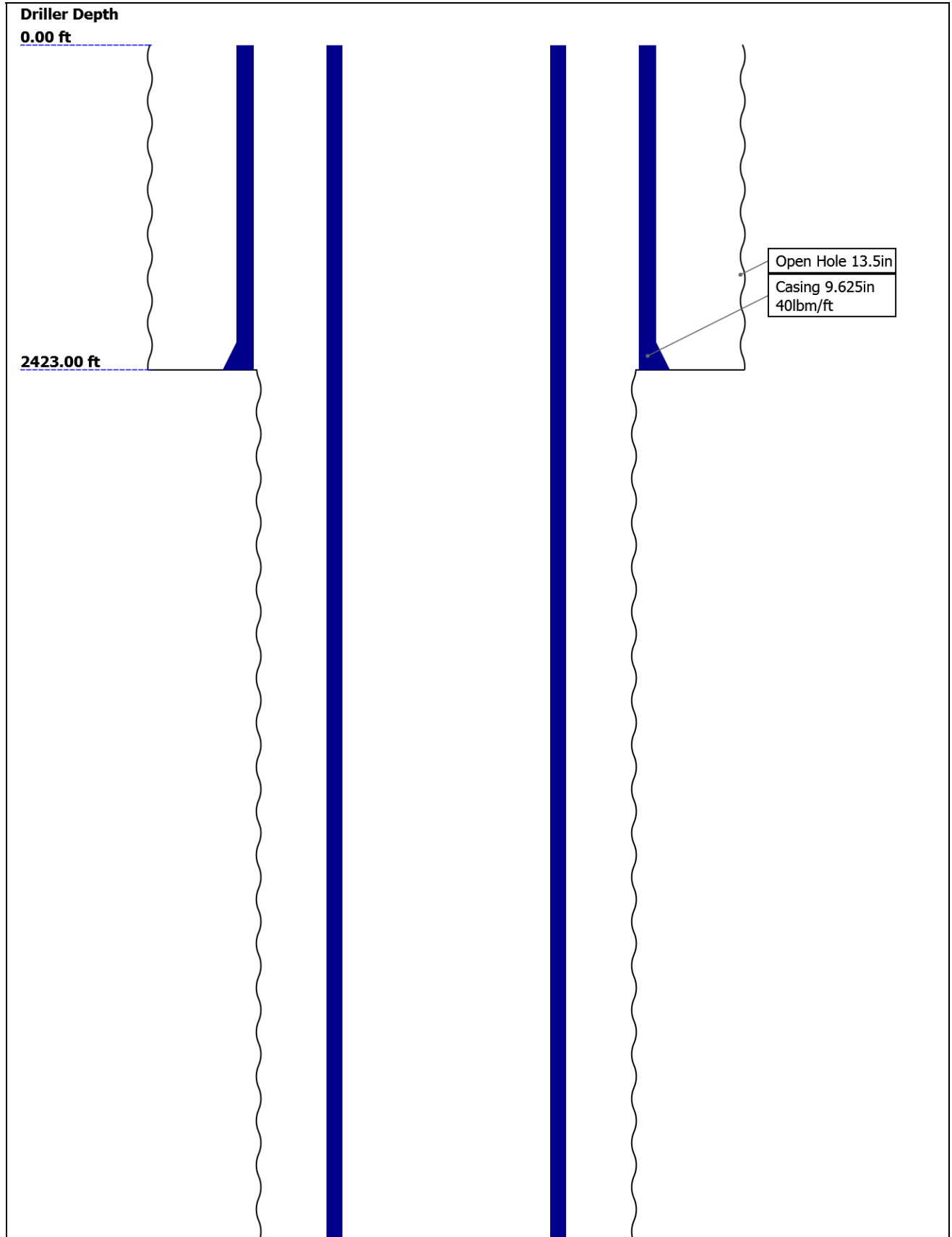
Disclaimer

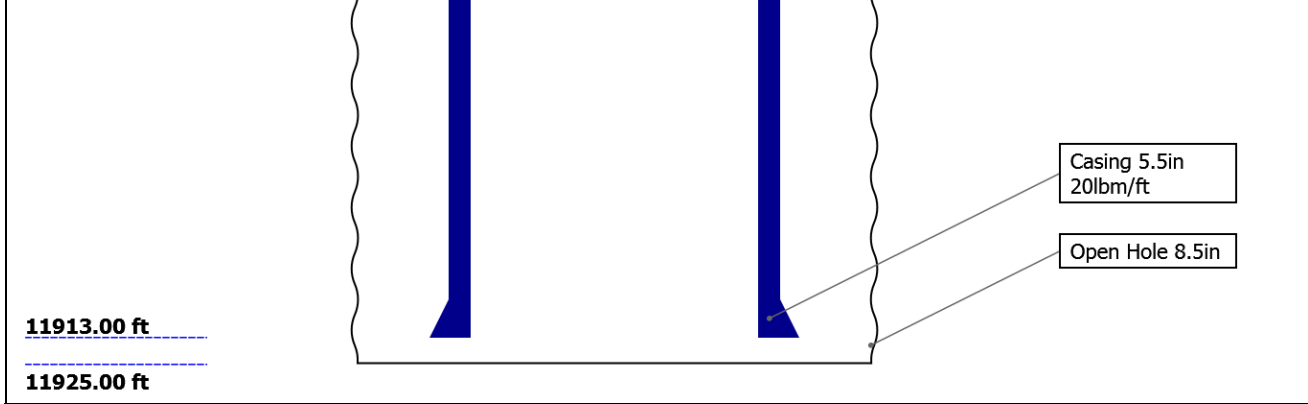
THE USE OF AND RELIANCE UPON THIS RECORDED-DATA BY THE HEREIN NAMED COMPANY (AND ANY OF ITS AFFILIATES, PARTNERS, REPRESENTATIVES, AGENTS, CONSULTANTS AND EMPLOYEES) IS SUBJECT TO THE TERMS AND CONDITIONS AGREED UPON BETWEEN SCHLUMBERGER AND THE COMPANY, INCLUDING: (a) RESTRICTIONS ON USE OF THE RECORDED-DATA; (b) DISCLAIMERS AND WAIVERS OF WARRANTIES AND REPRESENTATIONS REGARDING COMPANY'S USE AND RELIANCE UPON THE RECORDED-DATA; AND (c) CUSTOMER'S FULL AND SOLE RESPONSIBILITY FOR ANY INFERENCE DRAWN OR DECISION MADE IN CONNECTION WITH THE USE OF THIS RECORDED-DATA.

Contents

- 1. Header
- 2. Disclaimer
- 3. Contents
- 4. Well Sketch
- 5. Borehole Size/Casing/Tubing Record
- 6. Remarks and Equipment Summary
- 7. Depth Summary
- 8. ONE IBC VDL Wide 0 PSI
 - 8.1 Integration Summary
 - 8.2 Composite Summary
 - 8.3 Log (IBC VDL WIDE)
- 9. Tail

Well Sketch






11913.00 ft
11925.00 ft

Casing 5.5in
20lbm/ft
Open Hole 8.5in

Borehole Size/Casing/Tubing Record

Bit						
Bit Size (in)	13.5	8.5				
Top Driller (ft)	0	2423				
Top Logger (ft)	0	2423				
Bottom Driller (ft)	2423	11925				
Bottom Logger (ft)	2423	11925				
Casing						
Size (in)	9.625	5.5				
Weight (lbm/ft)	40	20				
Inner Diameter (in)	8.835	4.778				
Grade	J55	J55				
Top Driller (ft)	0	0				
Top Logger (ft)	0	0				
Bottom Driller (ft)	2423	11913				
Bottom Logger (ft)	2423	11913				

Remarks and Equipment Summary

ONE: Toolstring			ONE: Remarks	
<div><div><div>Equip nameLength</div><div>LEH-QT30.73</div><div>LEH-QT</div></div><div><div>EDTC-B27.24</div><div>EDTH-B</div><div>EDTG-A</div><div>EDTC-B</div></div><div><div>AH-184[2]20.74</div><div>AH-184[1]18.74</div><div>USIT-E16.74</div><div>ECH-MFA</div><div>USAC-A</div><div>USIS-A</div><div>USSC-B</div><div>IBCS-A</div><div>EAP-GENC</div></div></div> <div><div><div>MP nameOffset</div><div>CTEM23.74</div><div>ACCZ0.00</div><div>HV0.00</div><div>Gamma21.87</div><div>Ray</div><div>TelStatu20.74</div><div>s</div></div></div>	Thank you for choosing Schlumberger!			
	Tool string run as per tool sketch and client logging program.			
	5" Gemcos and in-line centralizers with small hole kit used for centralization.			
	All passes run under 0 PSI.			
	Lead: 12.5 ppg Tail: 13.5 ppg Spacer: 12 ppg			

<div data-bbox="220 0 331 569"> </div> <p>Lengths are in ft Maximum Outer Diameter = 3.625 in Line: Sensor Location, Value: Gating Offset All measurements are relative to TOOL_ZERO</p>		
--	--	--

Depth Summary			
	ONE		
Depth Measuring Device			
Type	IDW-B		
Serial Number	6455		
Calibration Date	27-Jul-2018		
Calibrator Serial Number	57		
Calibration Cable Type	7-32ASXS		
Wheel Correction 1	-1		
Wheel Correction 2	1		
Tension Device			
Type	CMTD-B/A		
Serial Number	1703		
Calibration Date	29-Jul-2018		
Calibrator Serial Number	88310A		
Number of Calibration Points	10		
Calibration Root Mean Square Error	6		
Calibration Peak Error	9		
Logging Cable			
Type	7-32AS-XS		
Serial Number			
Length	21111.00 ft		
Conveyance Type	Wireline		
Rig Type	Crane USA		
ONE:Depth Control Parameters		Depth Control Remarks	
Log Sequence	First Log In the Well	All Schlumberger depth control policies followed. IDW used for primary depth control. Zchart used for secondary depth control. Logs correlated to down log.	
Rig Up Length At Surface			
Rig Up Length At Bottom			
Rig Up Length Correction			

Stretch Correction
Tool Zero Check At Surface

ONE

IBC VDL Wide 0 PSI

Pass Summary

Run Name	Pass Objective	Direction	Top	Bottom	Start	Stop	DSC Mode	Depth Shift	Include Parallel Data
ONE	Log[3]:Up	Up	44.90 ft	6613.96 ft	19-Oct-2018 11:44:54 AM	19-Oct-2018 1:26:23 PM	ON	3.64 ft	Yes

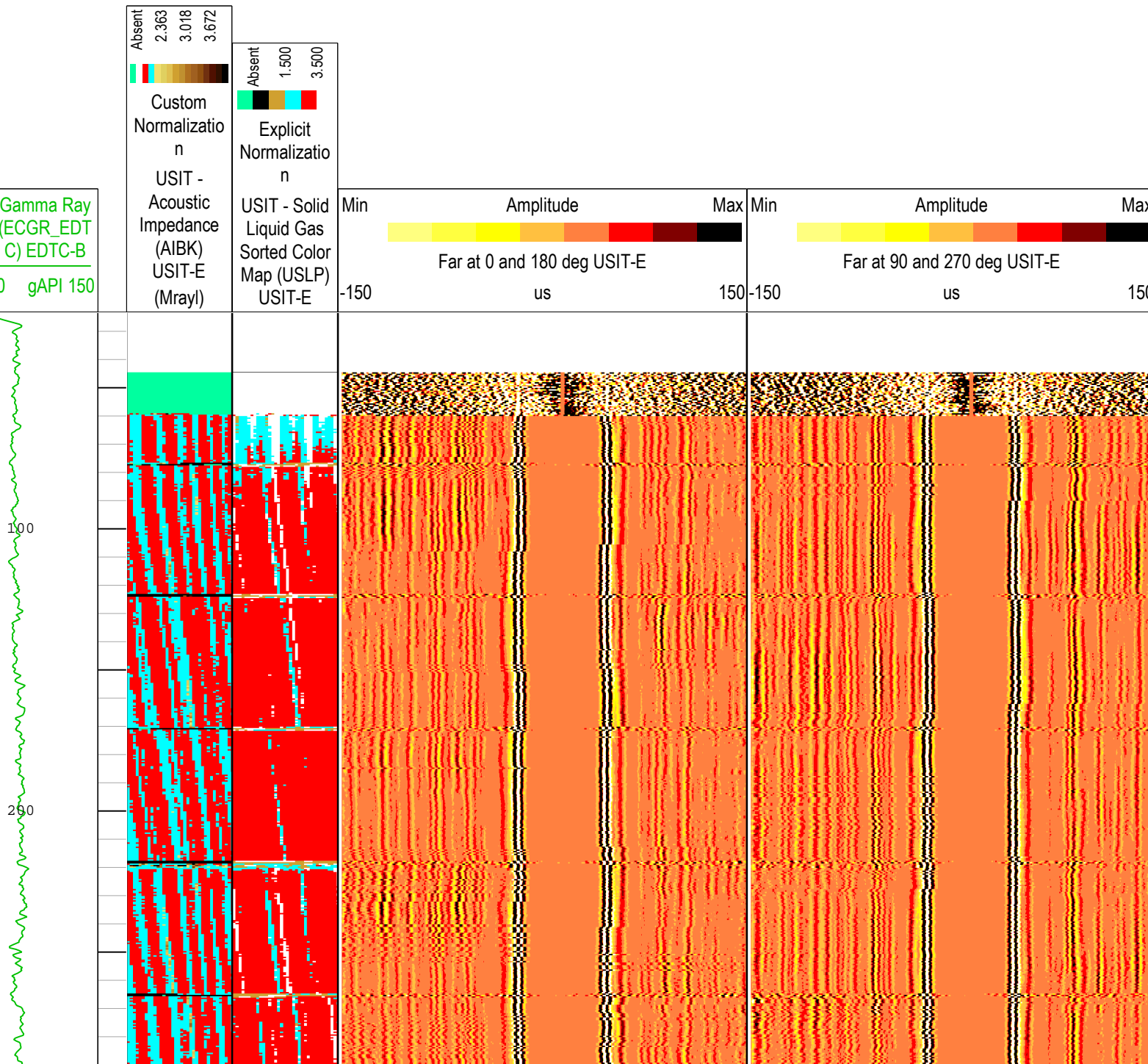
All depths are referenced to toolstring zero

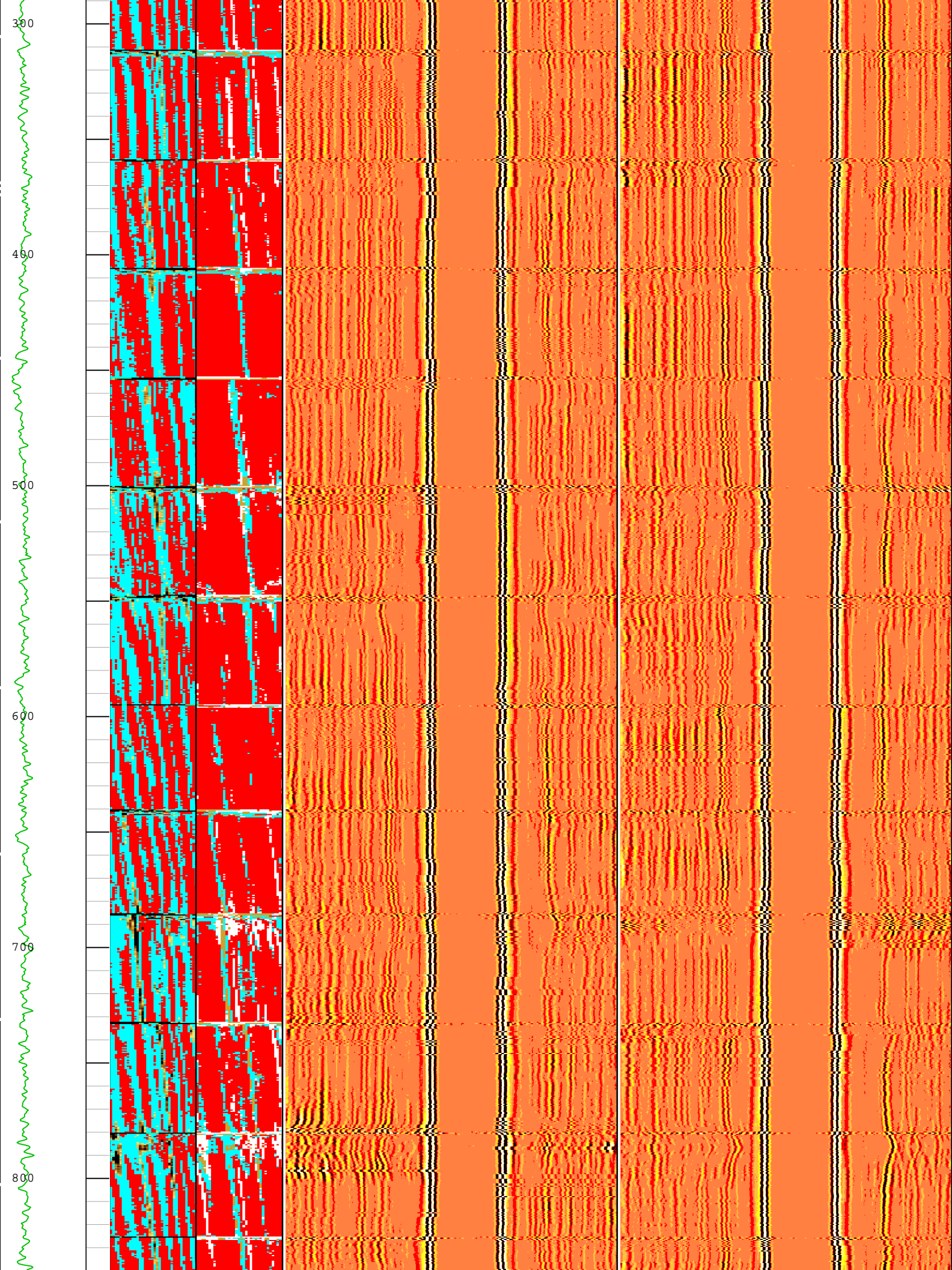
Log

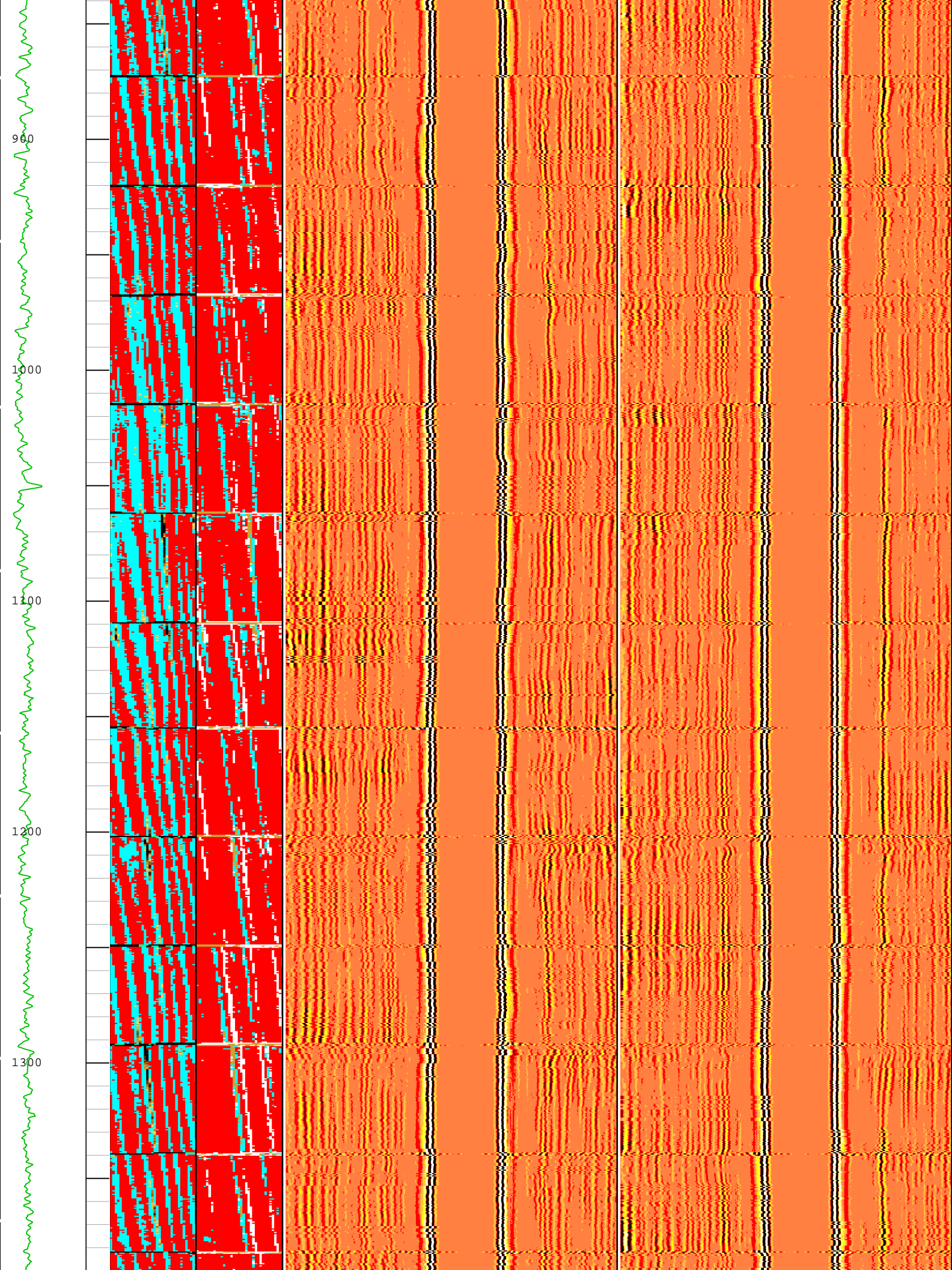
Company:Crestone Peak Resources Operating LLC Well:Sam 3M-25H-M166
ONE: Log[3]:Up:S003

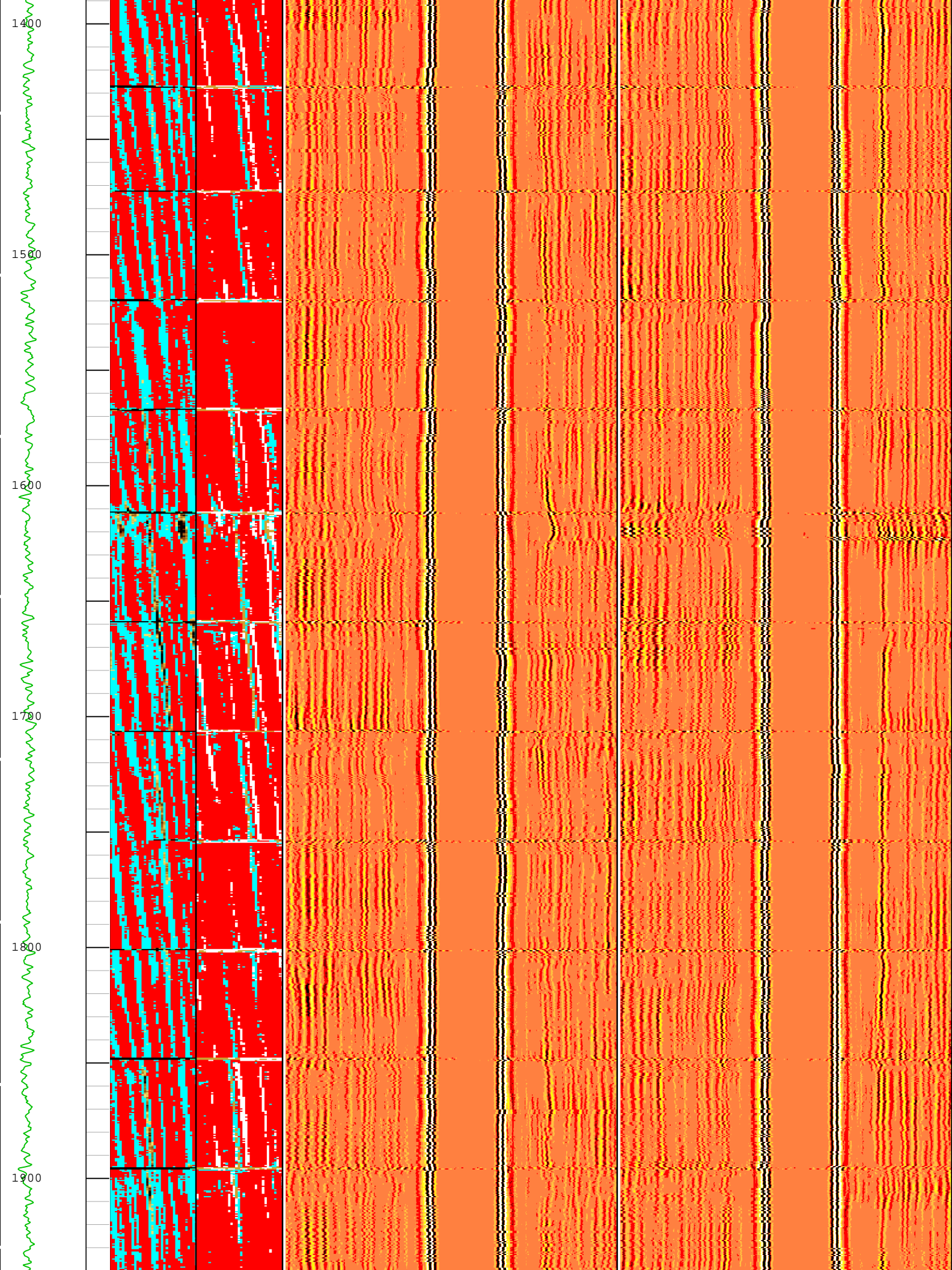
Description: USI IBC VDL WIDE Format: Log (IBC VDL WIDE) Index Scale: 2 in per 100 ft Index Unit: ft Index Type: Measured Depth Creation Date: 19-Oct-2018 16:02:34

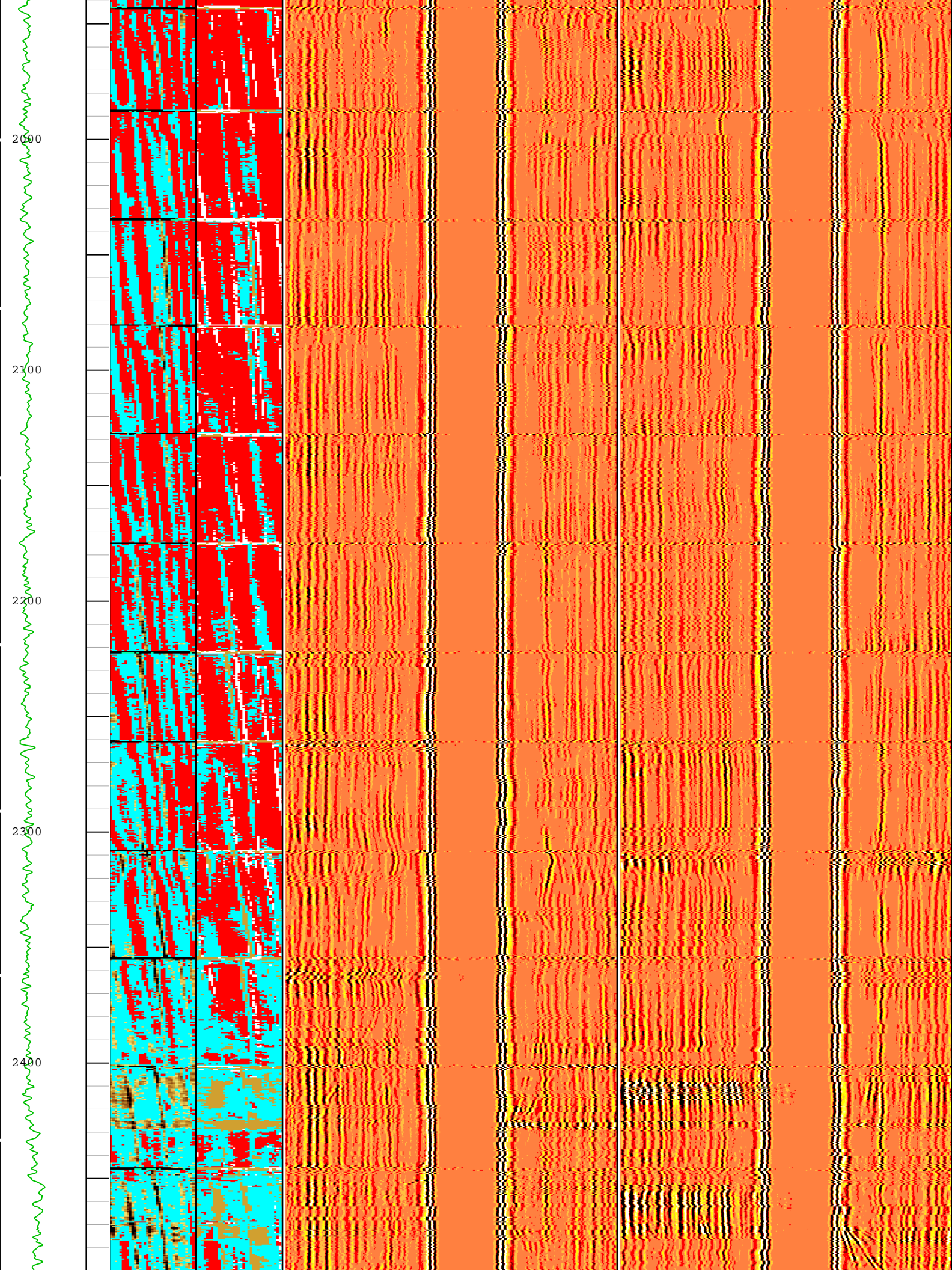
TIME_1900 - Time Marked every 60.00 (s)

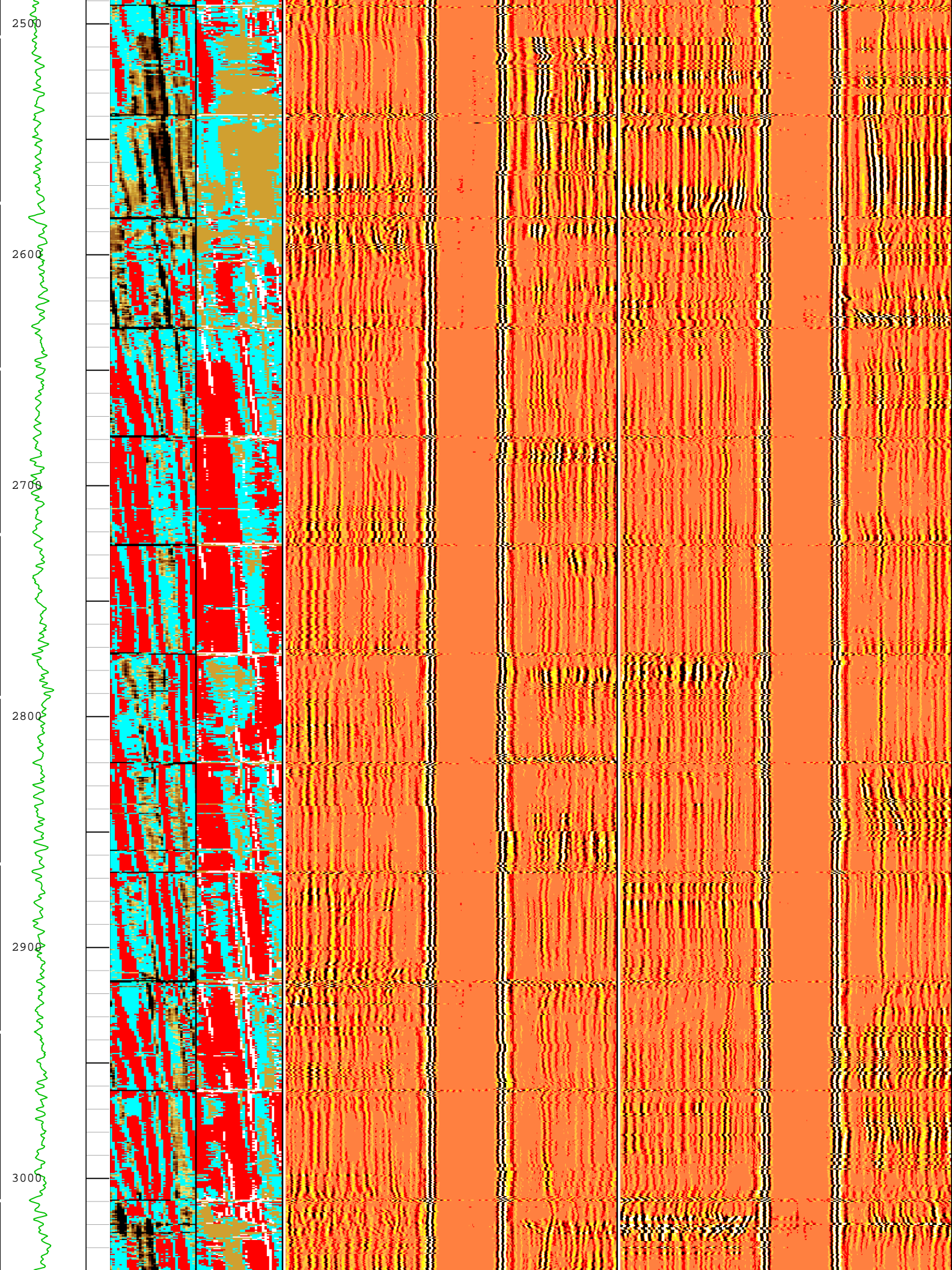


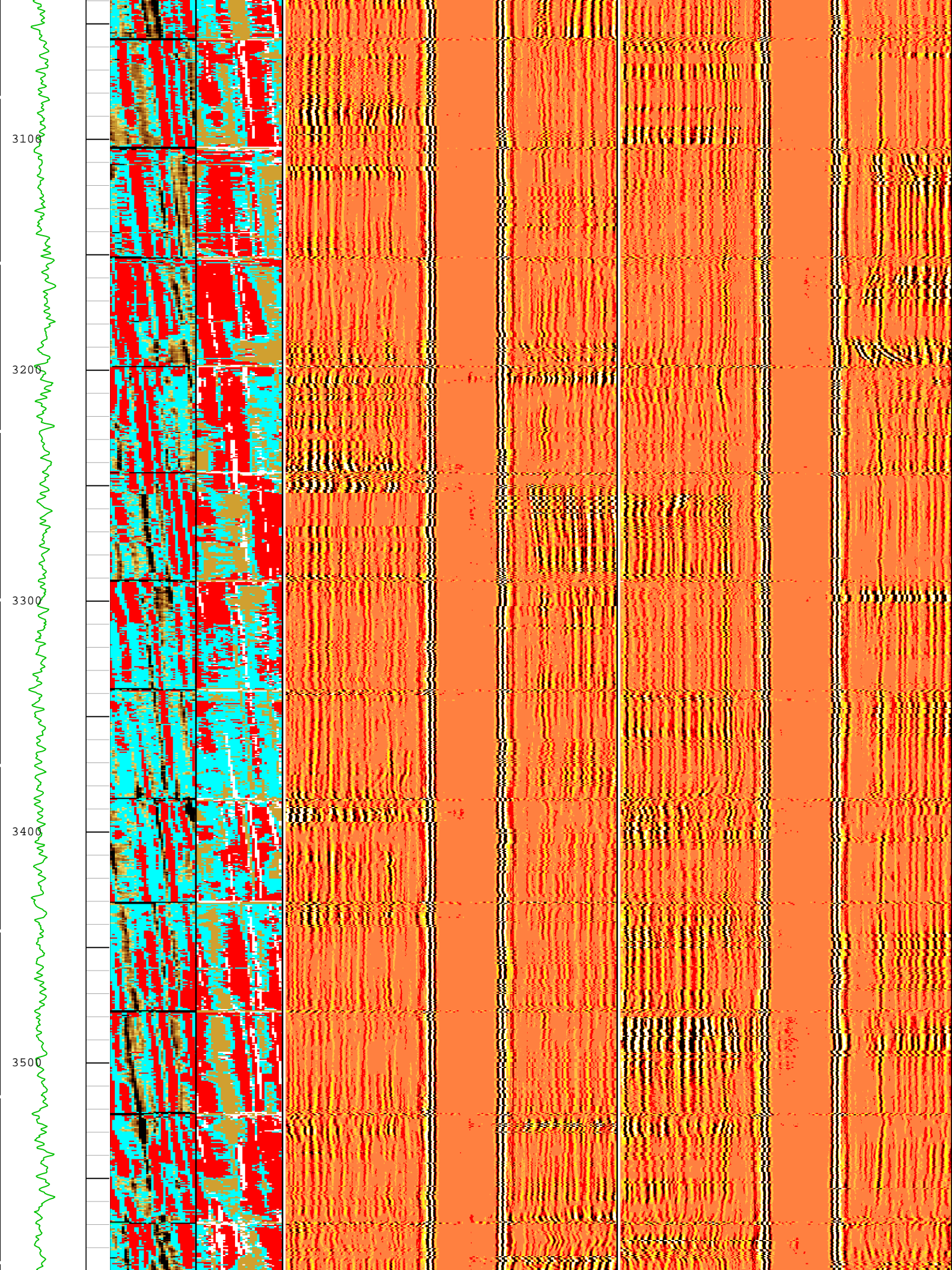


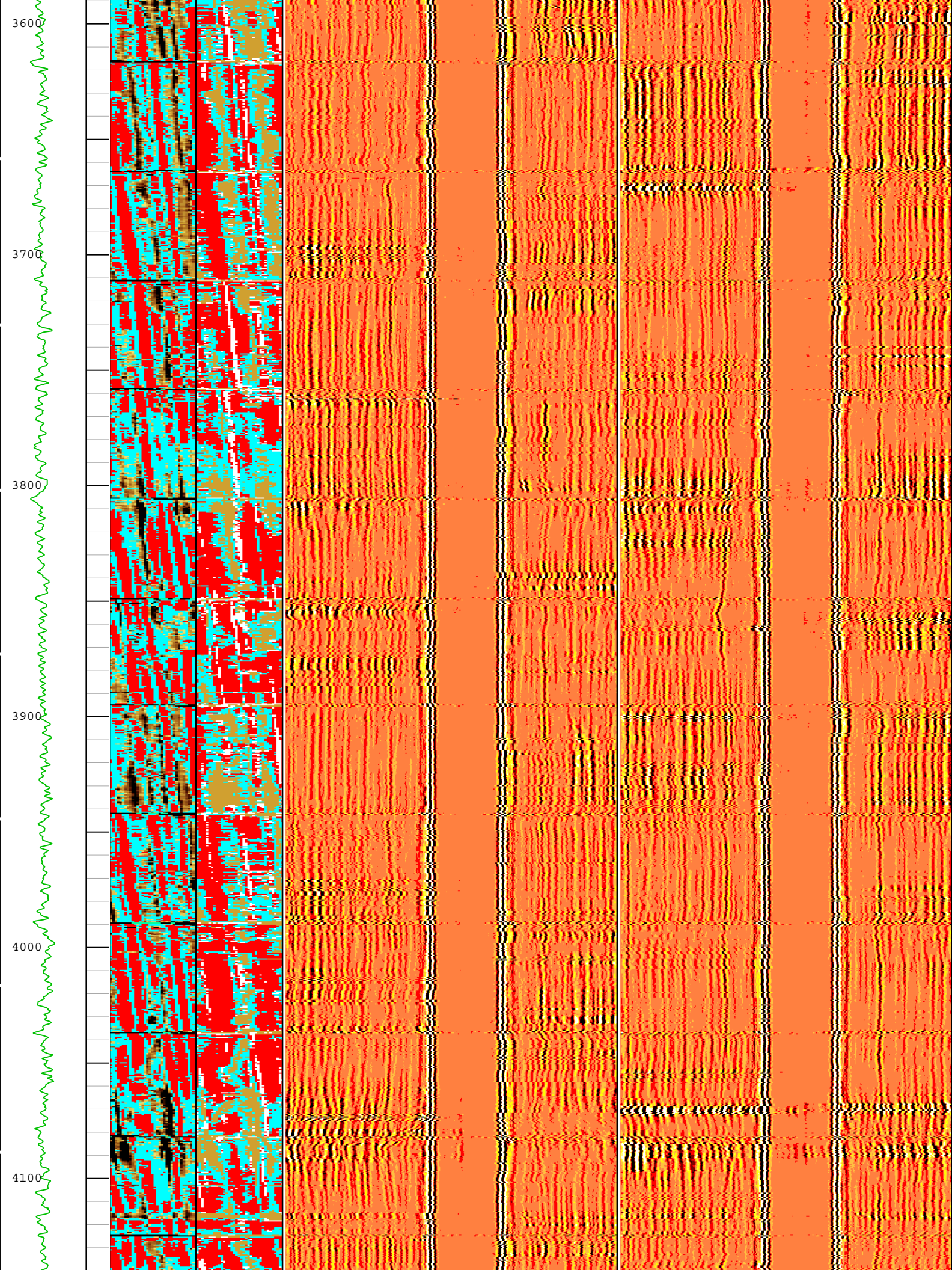


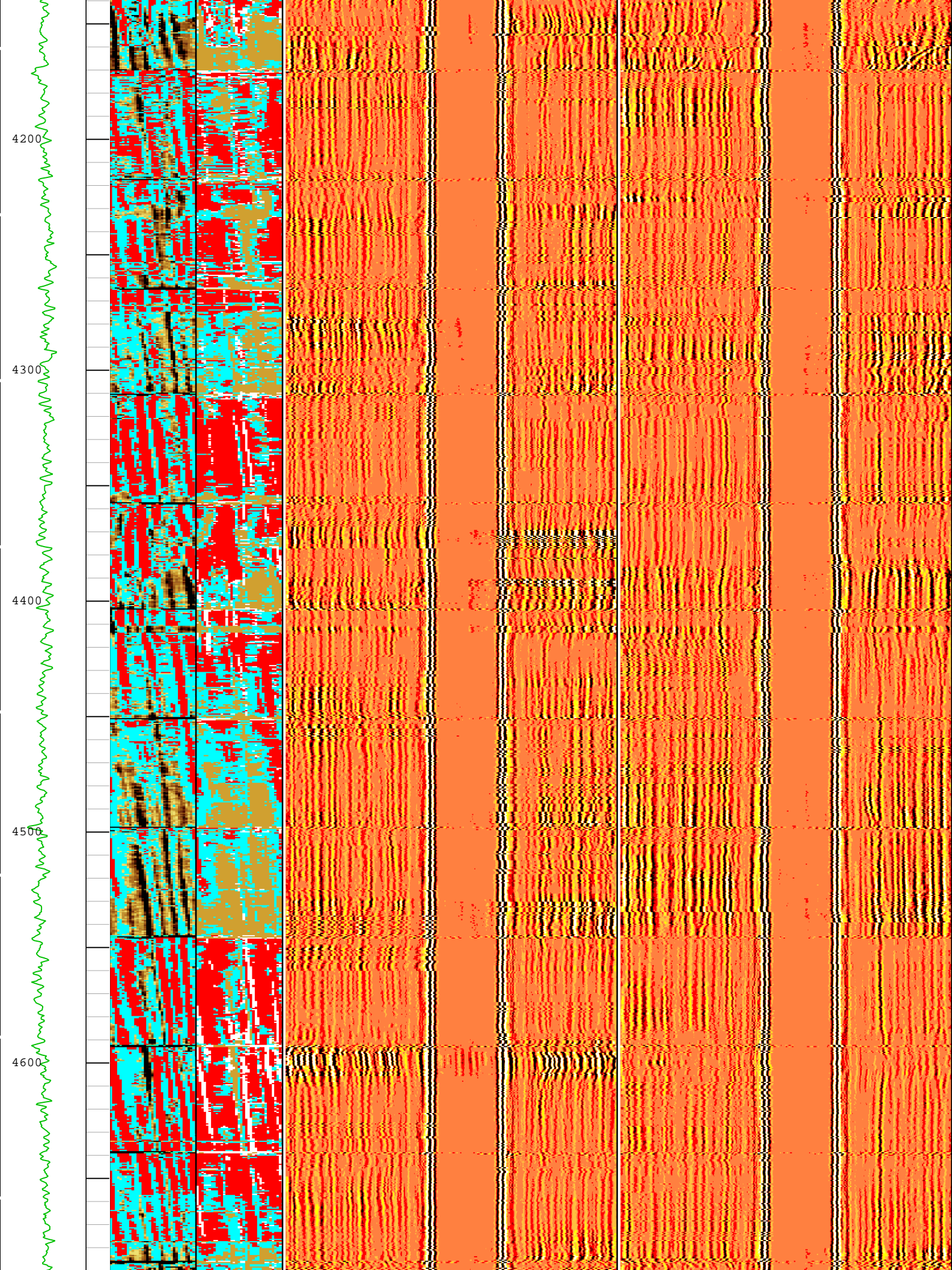


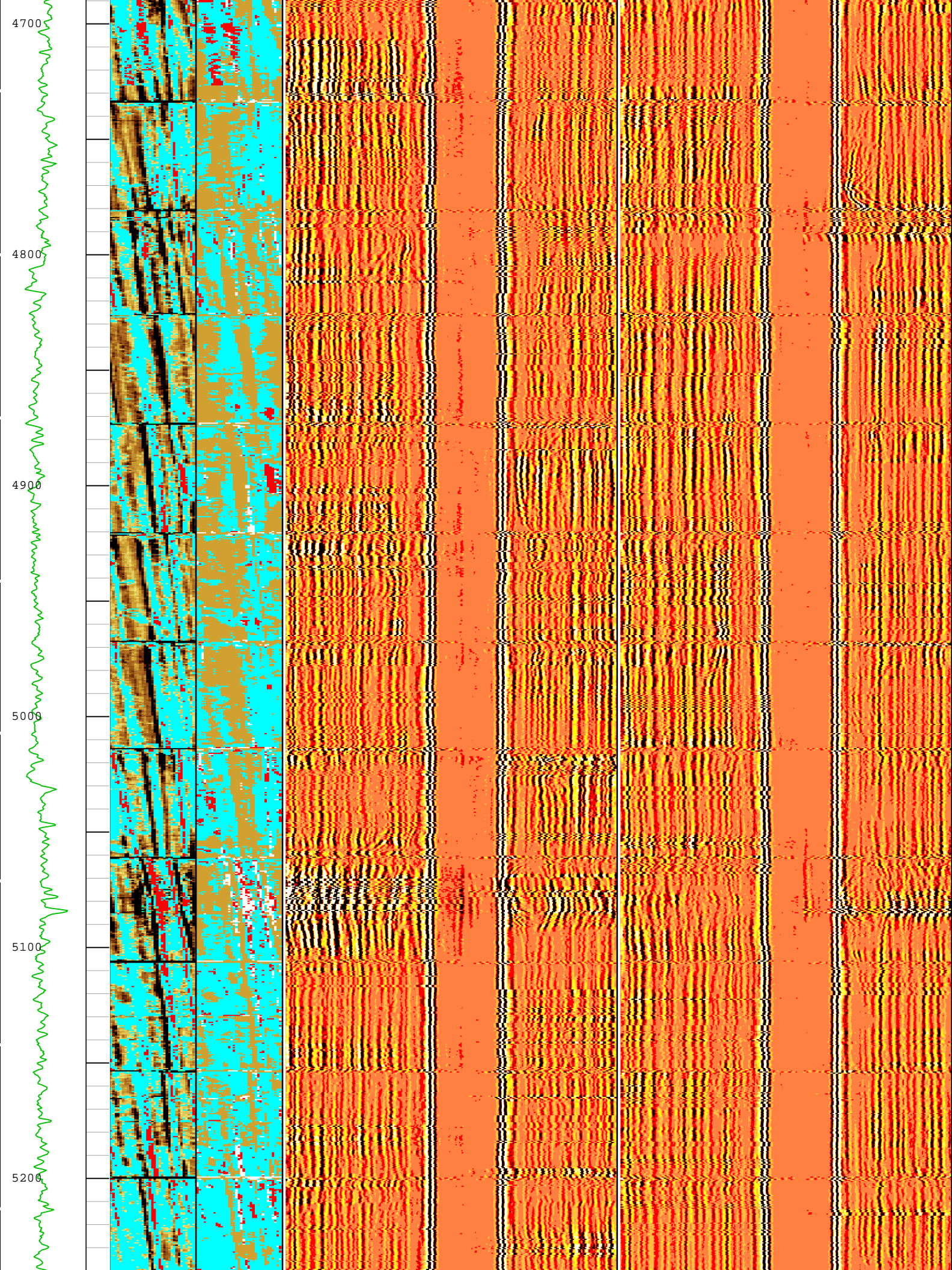


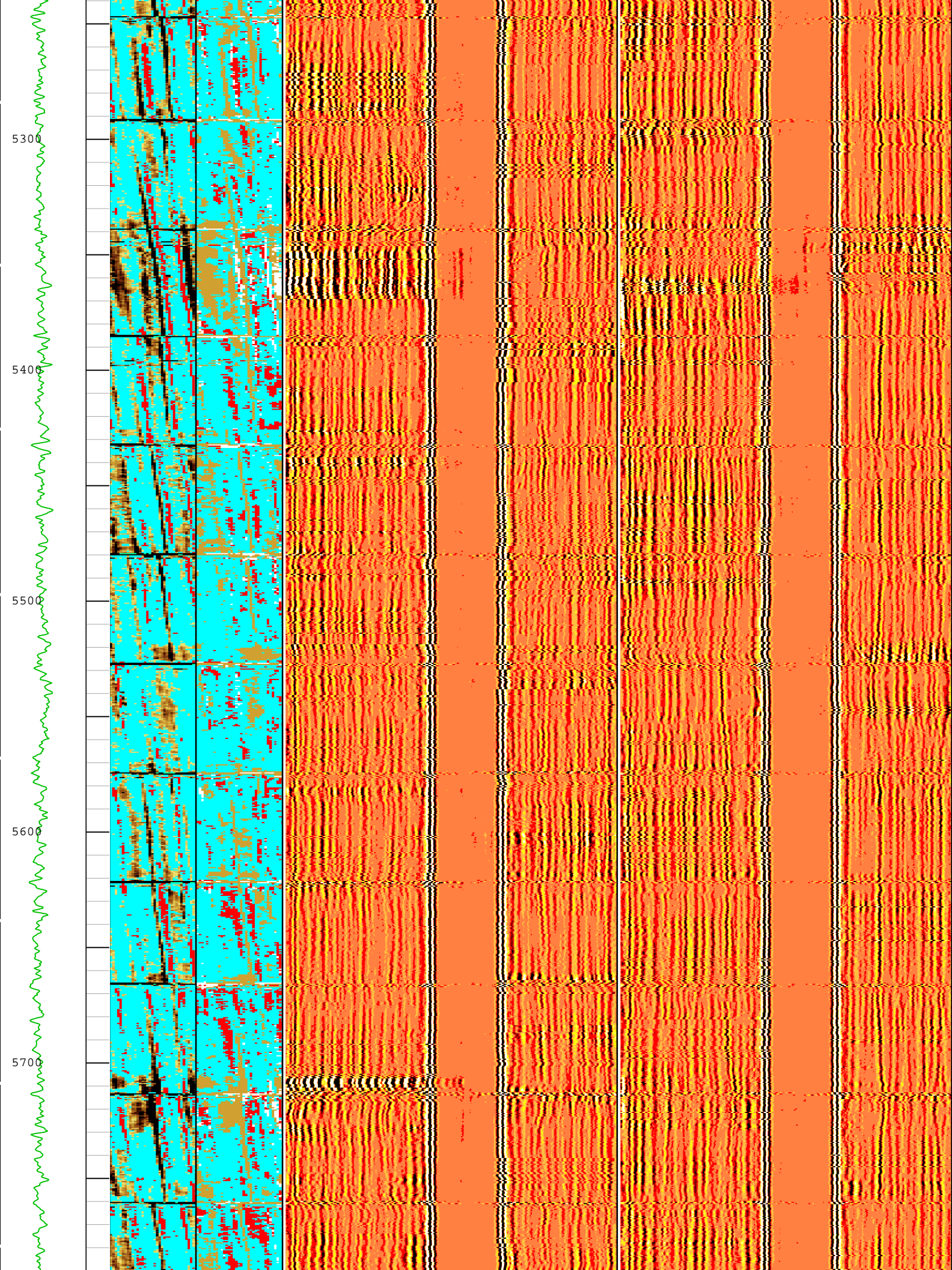


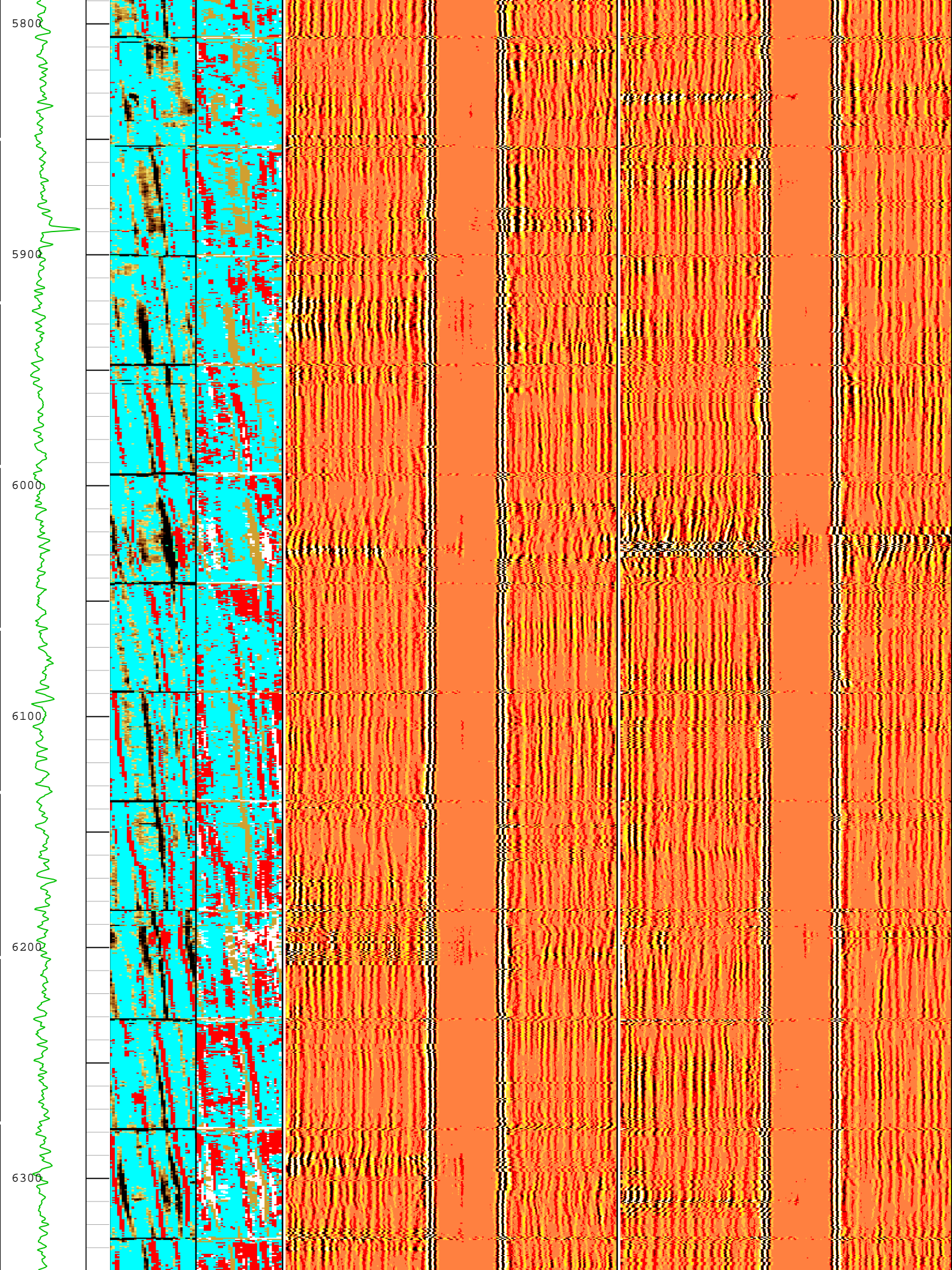


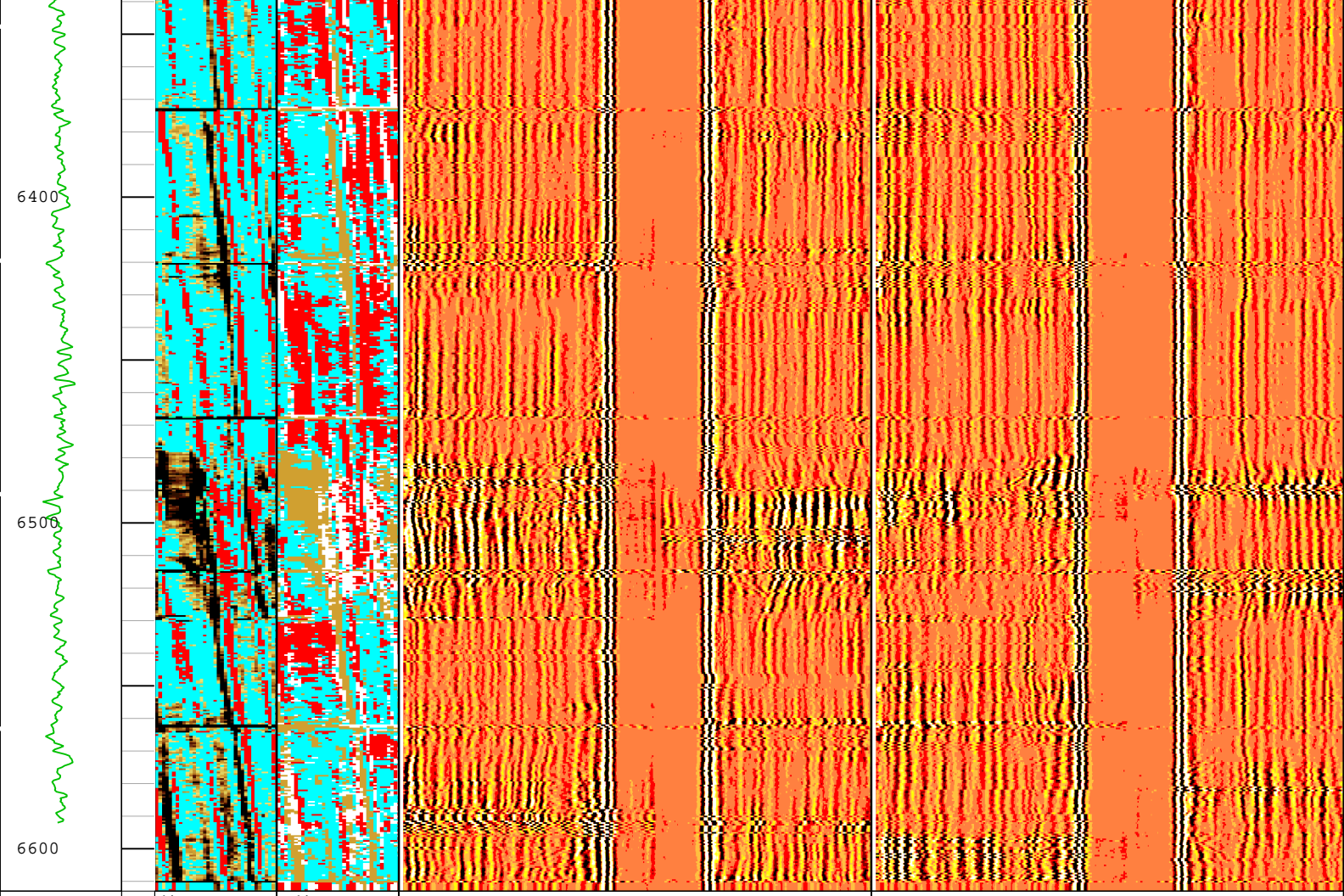













Gamma Ray
(ECGR_EDT
C) EDTC-B
0 gAPI 150


Absent 2.363 3.018 3.672



Custom Normalization

USIT - Acoustic Impedance (AIBK)
USIT-E (Mrayl)


Absent 1.500 3.500



Explicit Normalization

USIT - Solid Liquid Gas
Sorted Color Map (USLP)
USIT-E


Min Amplitude Max



Far at 0 and 180 deg USIT-E

-150 us 150

Min Amplitude Max



Far at 90 and 270 deg USIT-E

-150 us 150

TIME_1900 - Time Marked every 60.00 (s)

Description: USI IBC VDL WIDE Format: Log (IBC VDL WIDE) Index Scale: 2 in per 100 ft Index Unit: ft Index Type: Measured Depth Creation Date: 19-Oct-2018 16:02:34

Company: Crestone Peak Resources Operating LLC

Schlumberger

Well: Sam 3M-25H-M166

Field: Wattenberg

County:	Weld
State:	Colorado
Isolation Scanner	
Cement Evaluation	
VDL Wide	