

Company: Crestone Peak Resources Operating LLC

Well: Sam 3K-25H-M166

Field: Wattenberg

County: Weld State: Colorado

Isolation Scanner
Cement Evaluation
VDL Wide

Weld
Wattenberg
NWSW Sec. 25, T1N, R66W
Sam 3K-25H-M166
Crestone Peak Resources Operating LLC

Location:		NWSW Sec. 25, T1N, R66W SHL: 1313' FSL & 310' FWL Lat/Long: 40.01862 / -104.733855	Elev.: K.B. 5103.00 ft G.L. 5080.00 ft D.F. 5103.00 ft
Permanent Datum:	Ground Level		Elev.: 5080.00 f
Log Measured From:	Kelly Bushing		23.00 ft above Perm.Datum
Drilling Measured From:	Kelly Bushing		
API Serial No.	Section:	Township:	Range:
05-123-46121	25	1N	66W

Logging Date 18-Oct-2018

Run Number ONE

Depth Driller 11937.00 ft

Schlumberger Depth 11937.00 ft

Bottom Log Interval 6830.00 ft

Top Log Interval 50.00 ft

Casing Fluid Type Fresh Water

Salinity

Density 8.4 lbm/gal

Fluid Level 8.00 ft

BIT/CASING/TUBING STRING

Bit Size 8.50 in

From 2425.00 ft

To 11937.00 ft

Casing/Tubing Size 5.5 in

Weight 20 lbm/ft

Grade J55

From 0.00 ft

To 11936.00 ft

Max Recorded Temperatures 182 degF

Logger on Bottom 18-Oct-2018 15:30:00

Unit Number 9108

Recorded By Richard Woods

Witnessed By Keith Kershnik

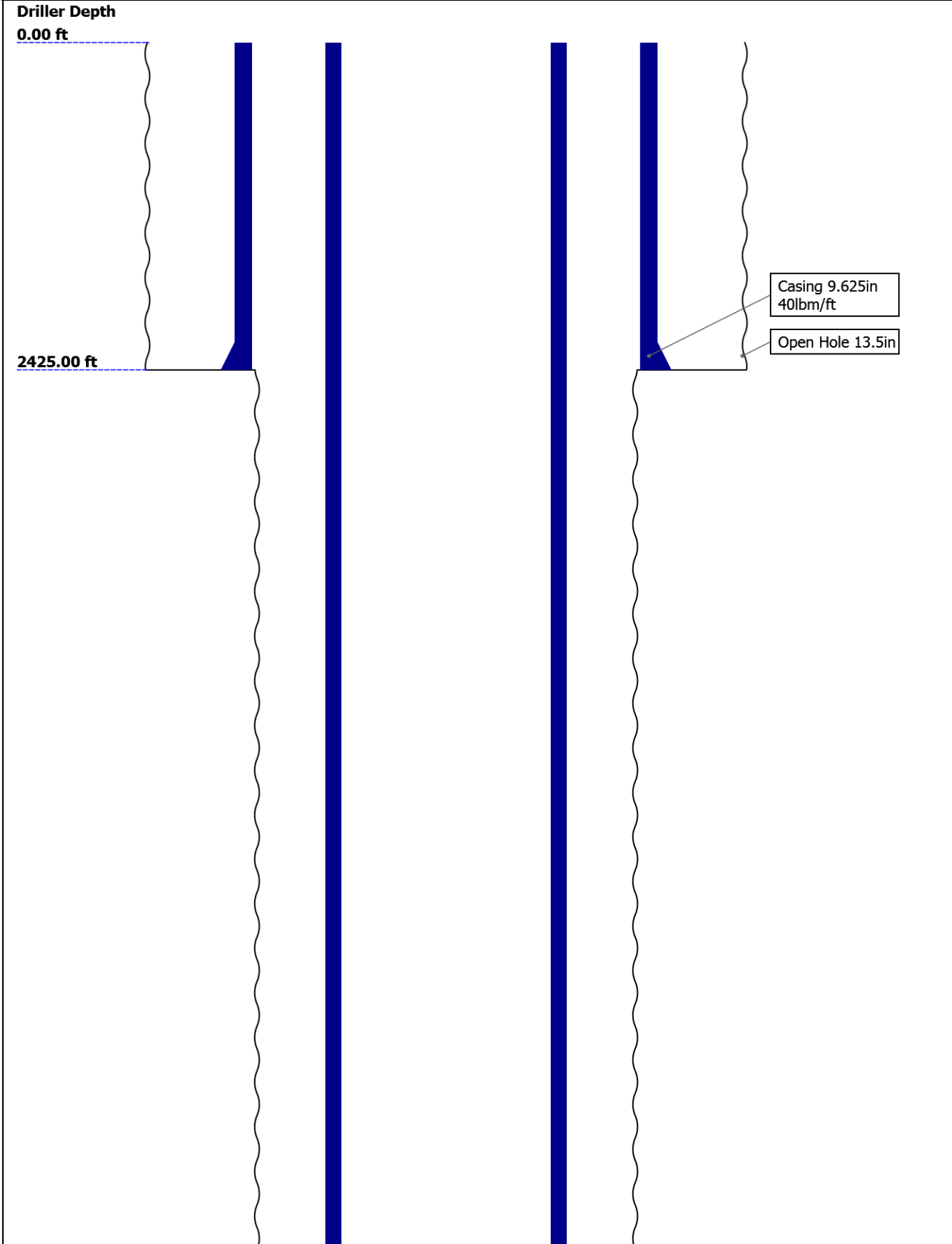
Disclaimer

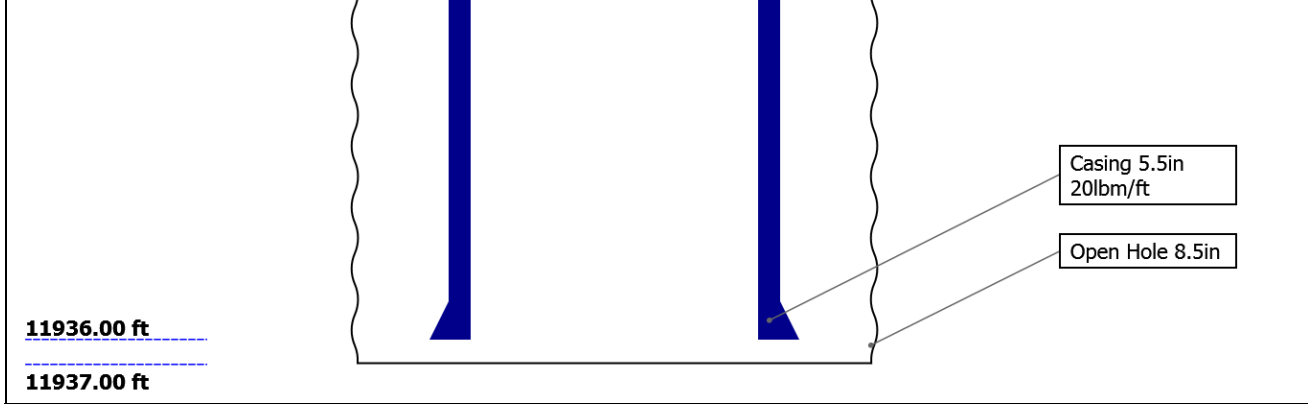
THE USE OF AND RELIANCE UPON THIS RECORDED-DATA BY THE HEREIN NAMED COMPANY (AND ANY OF ITS AFFILIATES, PARTNERS, REPRESENTATIVES, AGENTS, CONSULTANTS AND EMPLOYEES) IS SUBJECT TO THE TERMS AND CONDITIONS AGREED UPON BETWEEN SCHLUMBERGER AND THE COMPANY, INCLUDING: (a) RESTRICTIONS ON USE OF THE RECORDED-DATA; (b) DISCLAIMERS AND WAIVERS OF WARRANTIES AND REPRESENTATIONS REGARDING COMPANY'S USE AND RELIANCE UPON THE RECORDED-DATA; AND (c) CUSTOMER'S FULL AND SOLE RESPONSIBILITY FOR ANY INFERENCE DRAWN OR DECISION MADE IN CONNECTION WITH THE USE OF THIS RECORDED-DATA.

Contents

- 1. Header
- 2. Disclaimer
- 3. Contents
- 4. Well Sketch
- 5. Borehole Size/Casing/Tubing Record
- 6. Remarks and Equipment Summary
- 7. Depth Summary
- 8. ONE IBC VDL Wide 0 PSI
 - 8.1 Integration Summary
 - 8.2 Composite Summary
 - 8.3 Log (IBC VDL WIDE)
- 9. Tail

Well Sketch





Borehole Size/Casing/Tubing Record

Bit						
Bit Size (in)	13.5	8.5				
Top Driller (ft)	0	2425				
Top Logger (ft)	0	2425				
Bottom Driller (ft)	2425	11937				
Bottom Logger (ft)	2425	11937				
Casing						
Size (in)	9.625	5.5				
Weight (lbm/ft)	40	20				
Inner Diameter (in)	8.835	4.778				
Grade	J55	J55				
Top Driller (ft)	0	0				
Top Logger (ft)	0	0				
Bottom Driller (ft)	2425	11936				
Bottom Logger (ft)	2425	11936				

Remarks and Equipment Summary

ONE: Toolstring				ONE: Remarks	
Equip name	Length	MP name	Offset	Thank you for choosing Schlumberger!	
LEH-QT	30.73			Tool string run as per tool sketch and client logging program.	
LEH-QT				5" Gemcos and in-line centralizers with small hole kit used for centralization.	
EDTC-B	27.24			All passes run under 0 PSI.	
EDTH-B				Lead: 12.5 ppg	
EDTG-A				Tail: 13.5 ppg	
EDTC-B				Spacer: 12 ppg	
AH-184[2]	20.74	CTEM	23.74		
		ACCZ	0.00		
		HV	0.00		
		Gamma	21.87		
		Ray			
		TelStatu	20.74		
		s			
AH-184[1]	18.74				
USIT-E	16.74				
ECH-MFA					
USAC-A					
USIS-A					
USSC-B					
IBCS-A					
EAB-GENC					

<div data-bbox="220 0 331 569"> </div> <div data-bbox="86 594 443 684"> <p>Lengths are in ft Maximum Outer Diameter = 3.625 in Line: Sensor Location, Value: Gating Offset All measurements are relative to TOOL_ZERO</p> </div>		
--	--	--

Depth Summary			
	ONE		
Depth Measuring Device			
Type	IDW-B		
Serial Number	6455		
Calibration Date	27-Jul-2018		
Calibrator Serial Number	57		
Calibration Cable Type	7-32ASXS		
Wheel Correction 1	-1		
Wheel Correction 2	1		
Tension Device			
Type	CMTD-B/A		
Serial Number	1703		
Calibration Date	29-Jul-2018		
Calibrator Serial Number	88310A		
Number of Calibration Points	10		
Calibration Root Mean Square Error	6		
Calibration Peak Error	9		
Logging Cable			
Type	7-32AS-XS		
Serial Number			
Length	21111.00 ft		
Conveyance Type	Wireline		
Rig Type	Crane USA		
ONE:Depth Control Parameters		Depth Control Remarks	
Log Sequence	First Log In the Well	All Schlumberger Depth control procedures followed. IDW used for primary depht control. Zchart used for secondary depth control. Logs correlated to down log.	
Rig Up Length At Surface			
Rig Up Length At Bottom			
Rig Up Length Correction			

Stretch Correction
Tool Zero Check At Surface

ONE

IBC VDL Wide 0 PSI

Pass Summary

Run Name	Pass Objective	Direction	Top	Bottom	Start	Stop	DSC Mode	Depth Shift	Include Parallel Data
ONE	Log[5]:Up	Up	43.51 ft	6834.68 ft	18-Oct-2018 2:53:53 PM	18-Oct-2018 4:34:56 PM	ON	4.22 ft	Yes

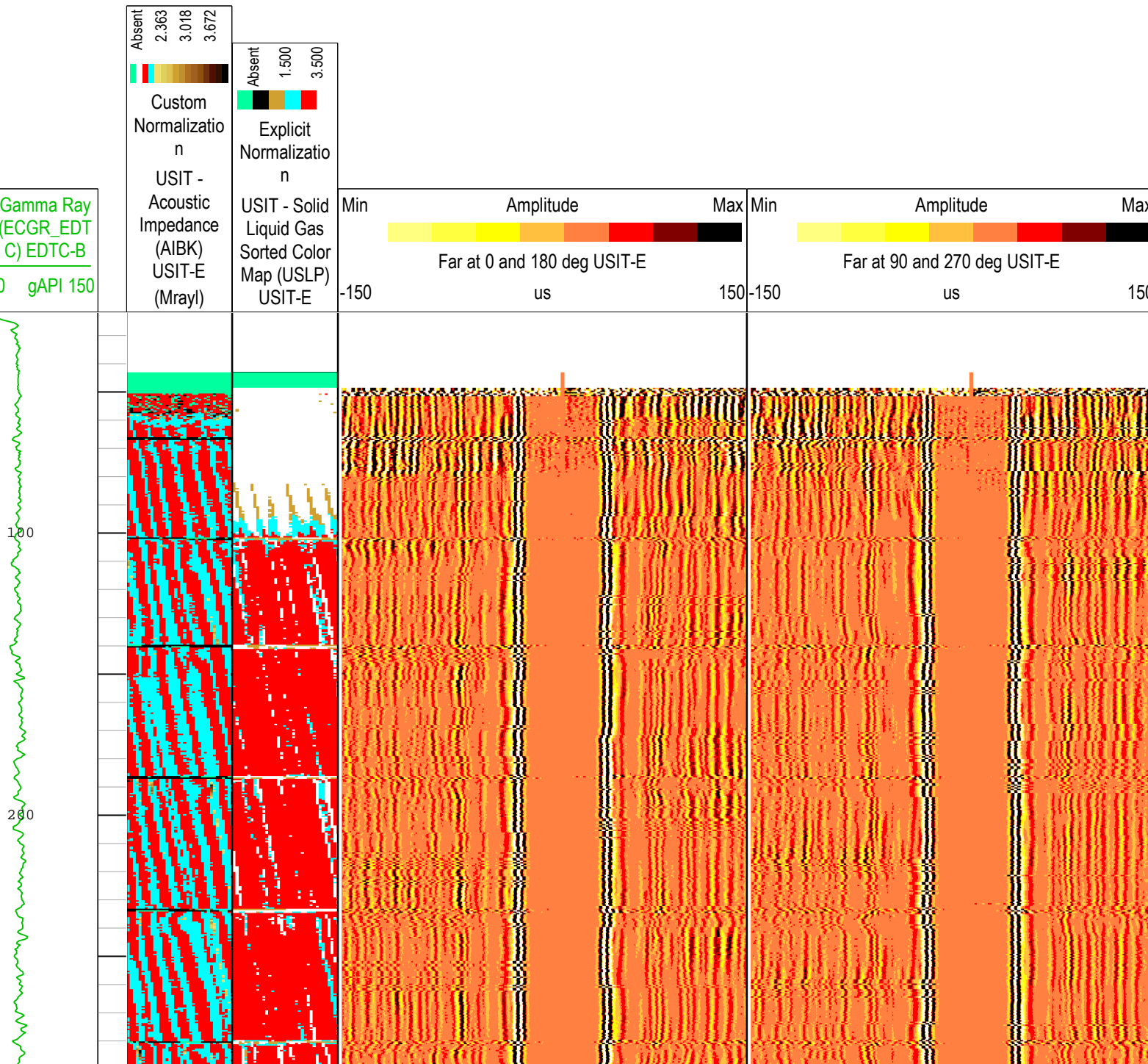
All depths are referenced to toolstring zero

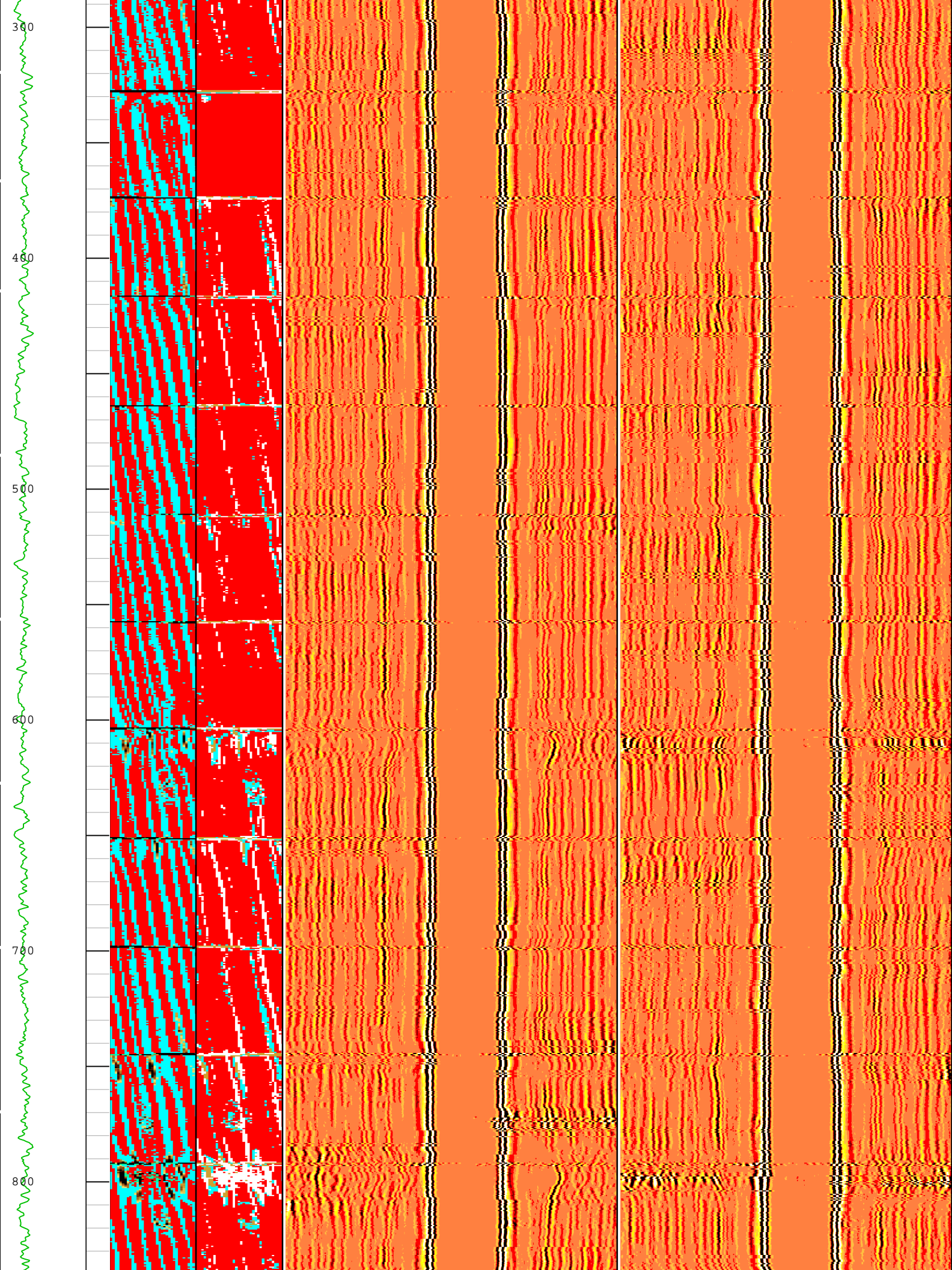
Log

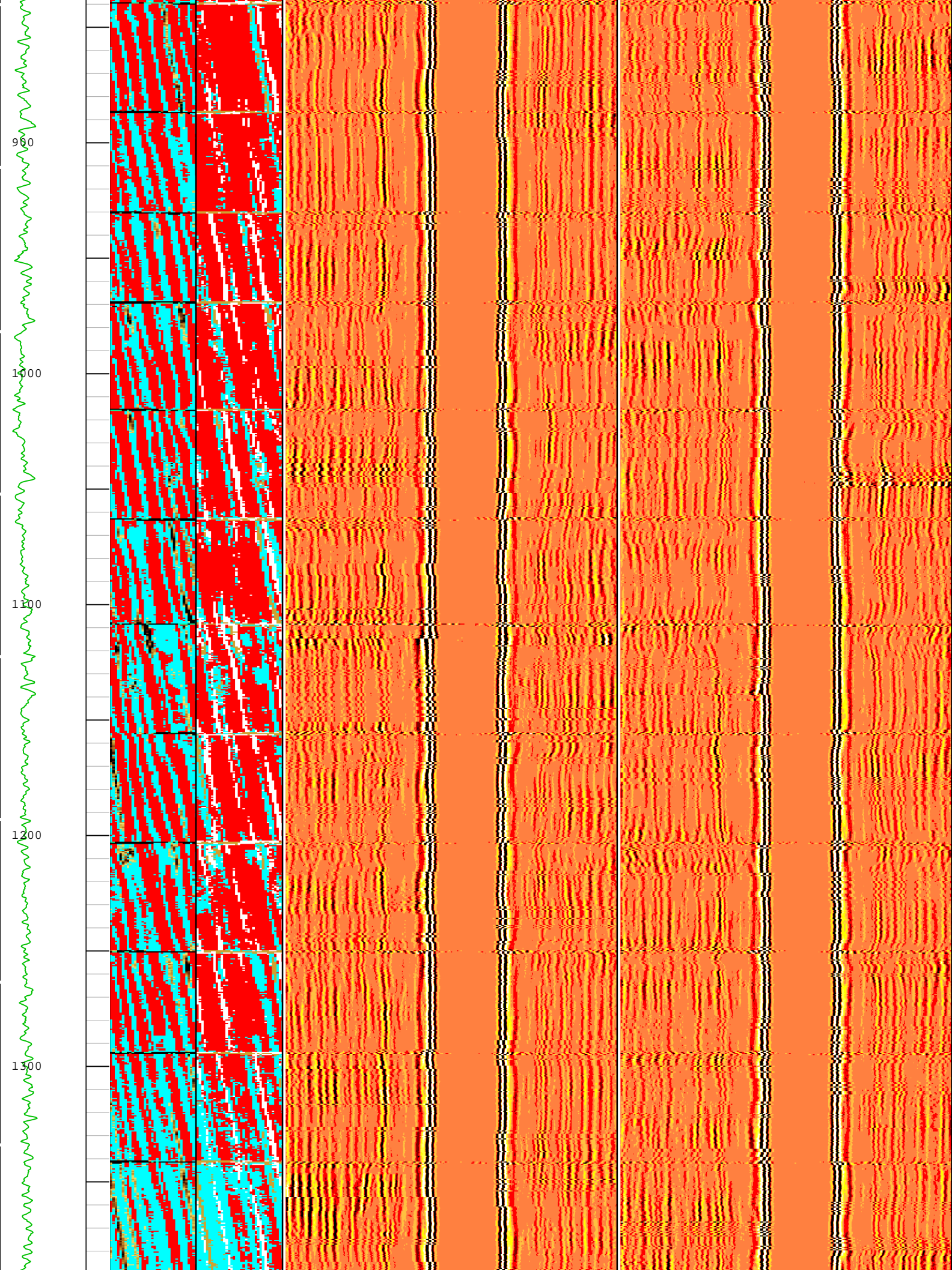
Company:Crestone Peak Resources Operating LLC Well:Sam 3K-25H-M166
ONE: Log[5]:Up:S002

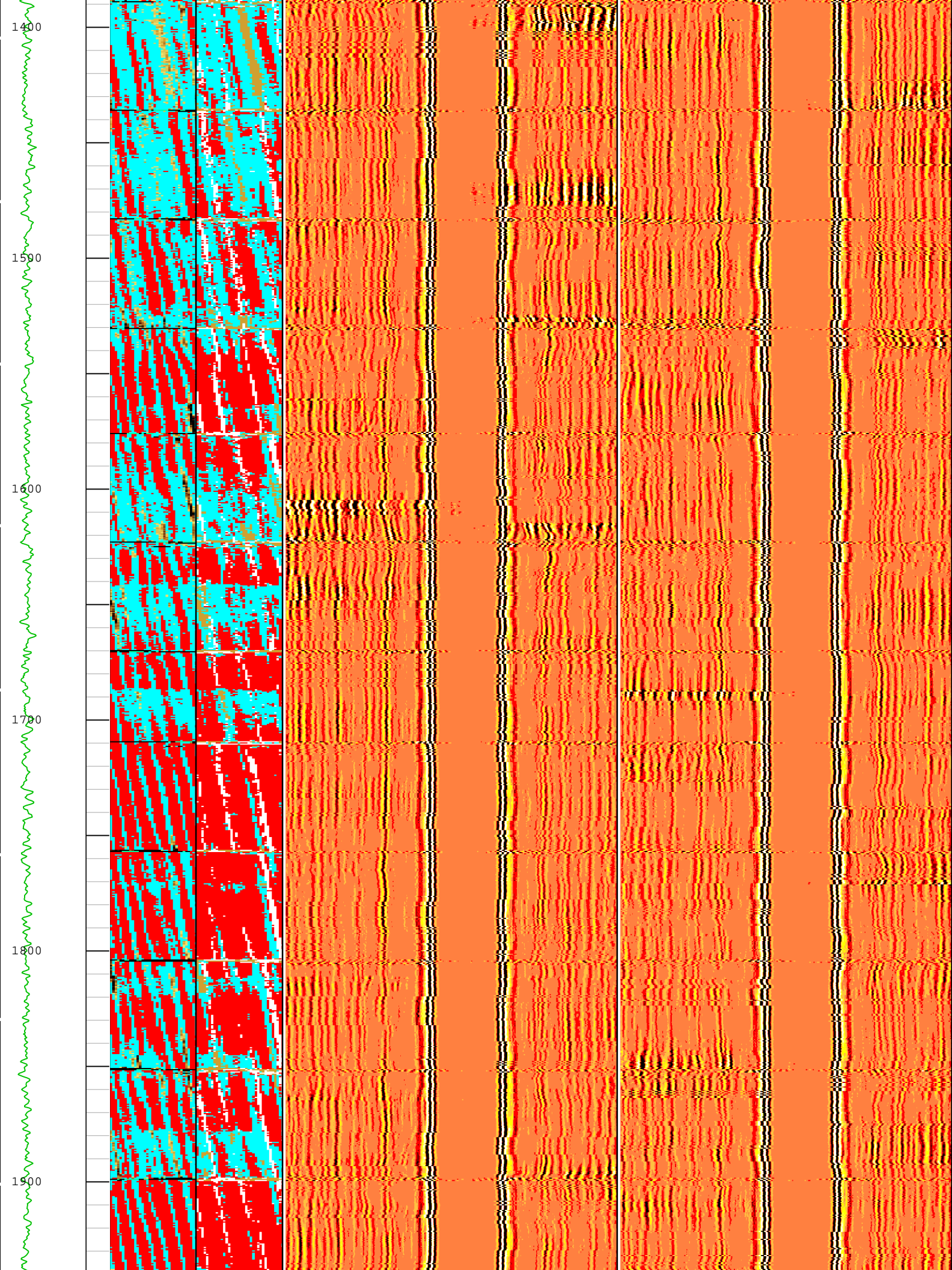
Description: USI IBC VDL WIDE Format: Log (IBC VDL WIDE) Index Scale: 2 in per 100 ft Index Unit: ft Index Type: Measured Depth Creation Date: 18-Oct-2018 17:58:07

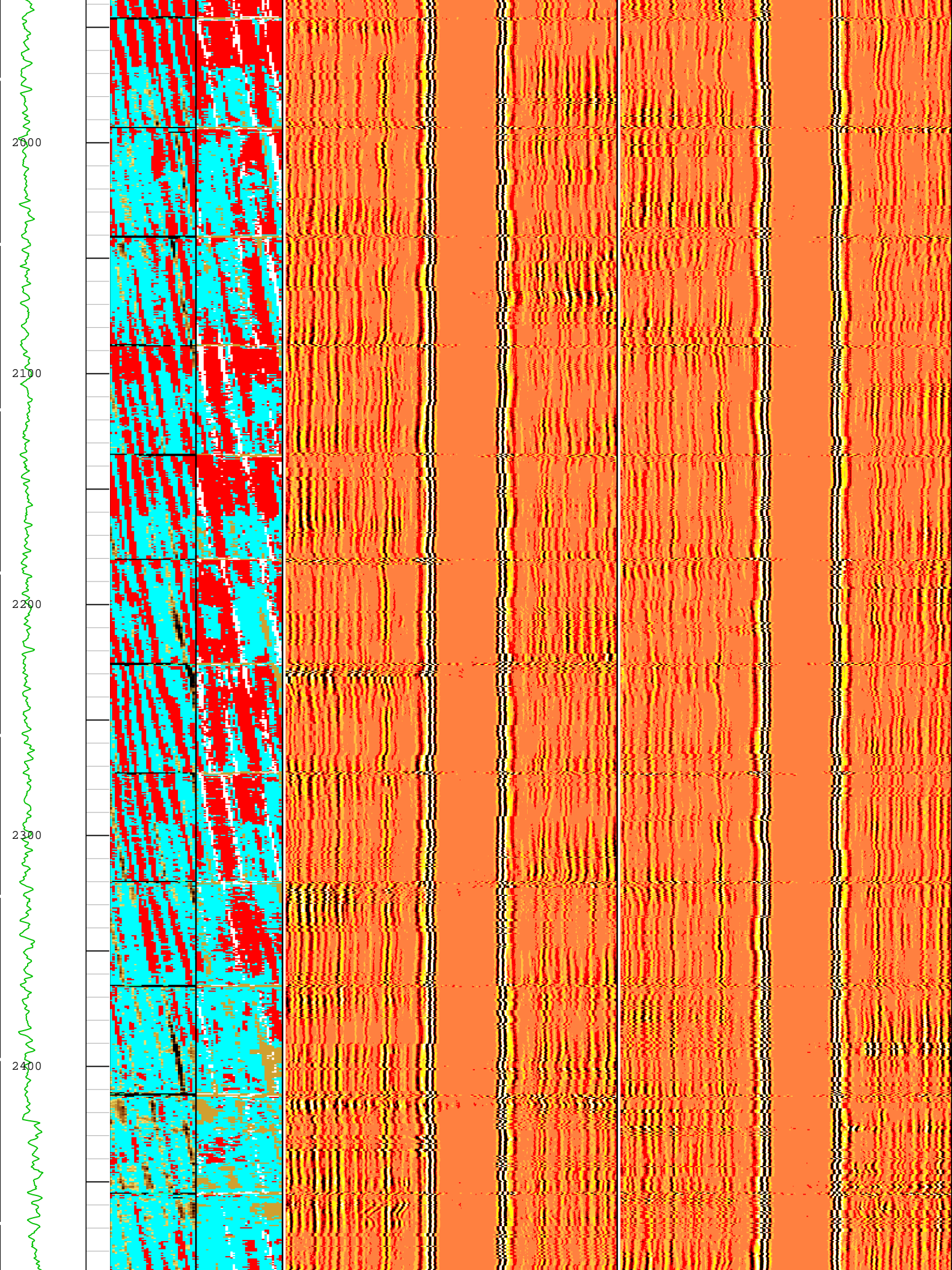
TIME_1900 - Time Marked every 60.00 (s)

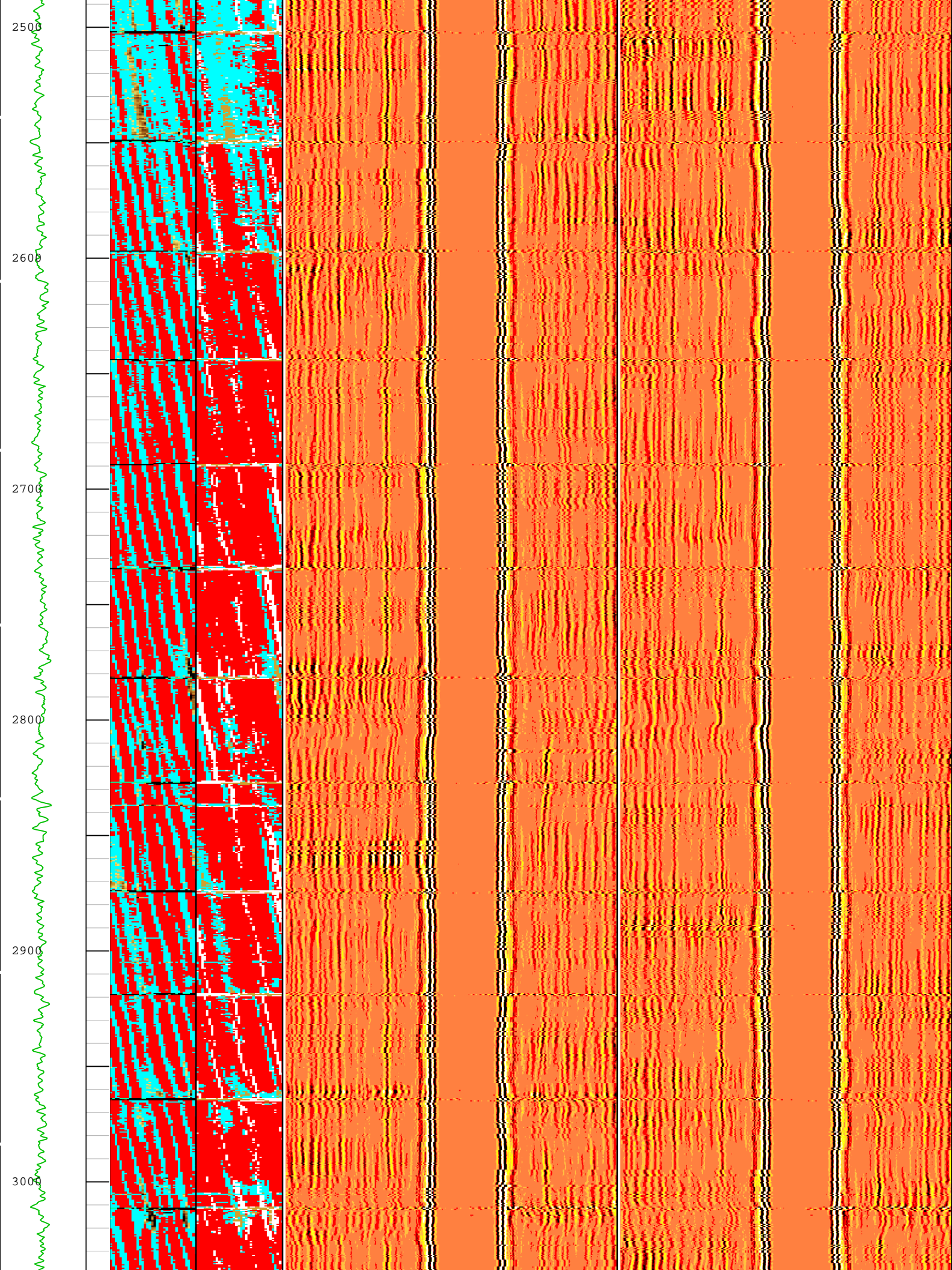


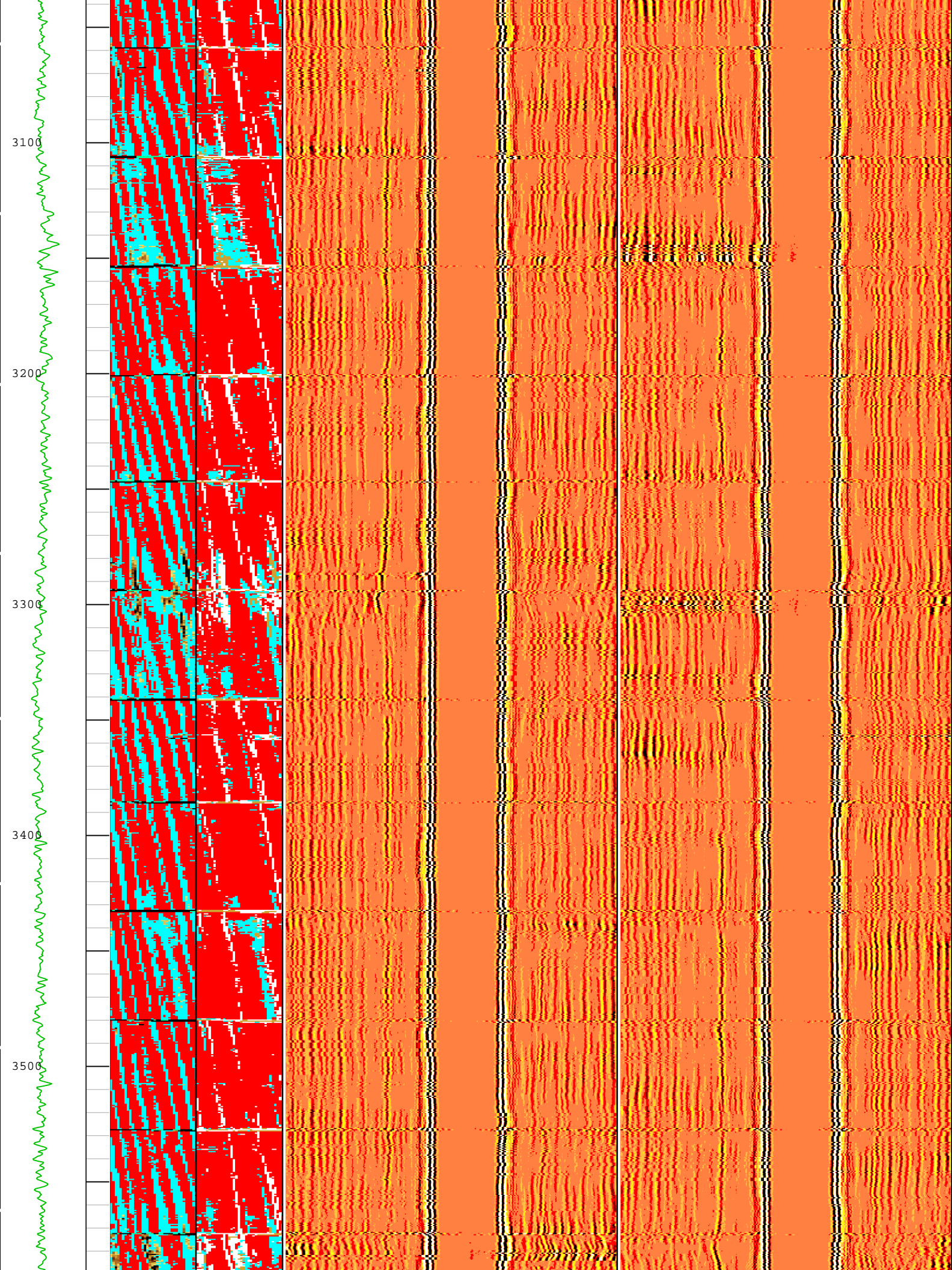


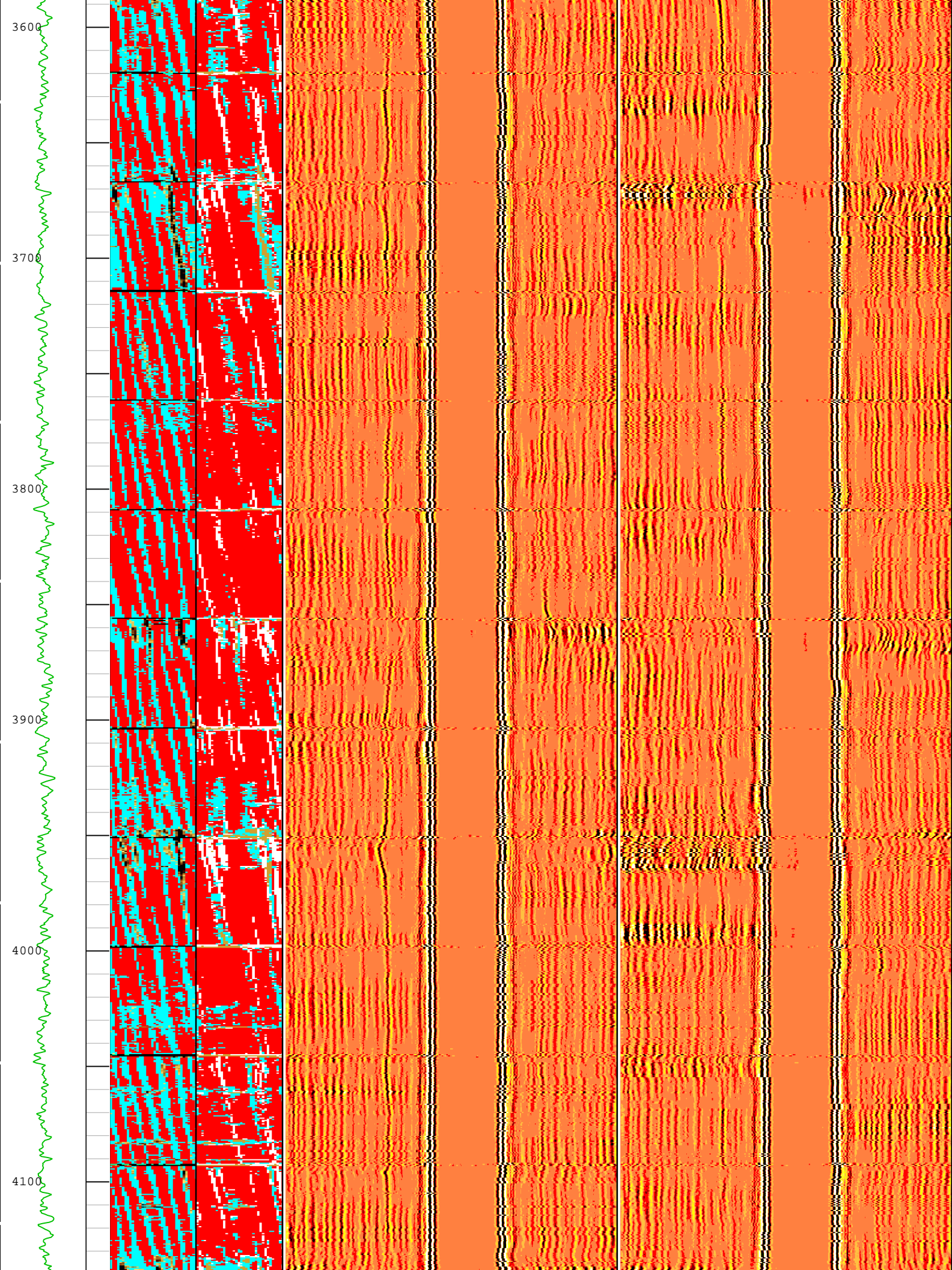


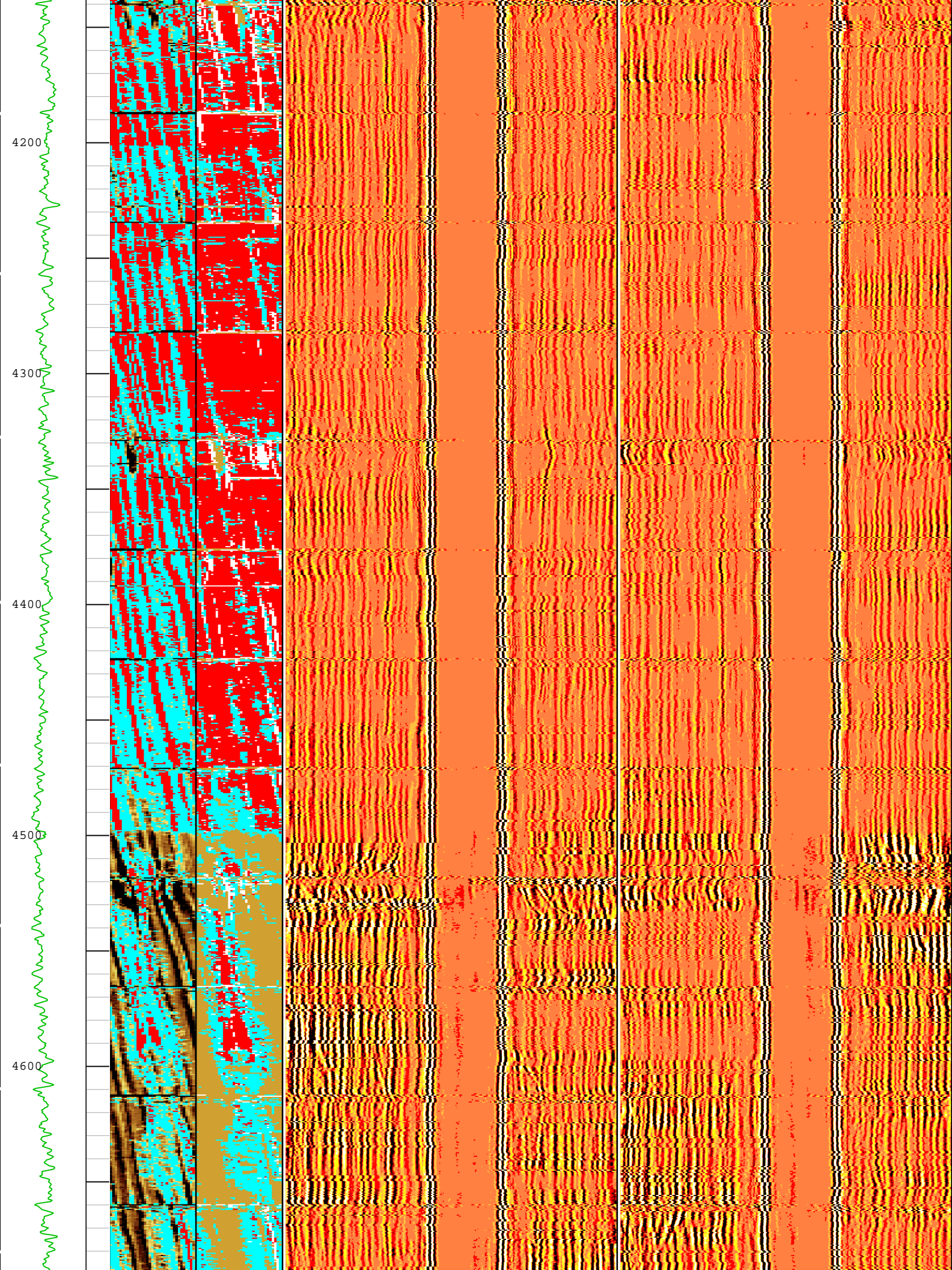


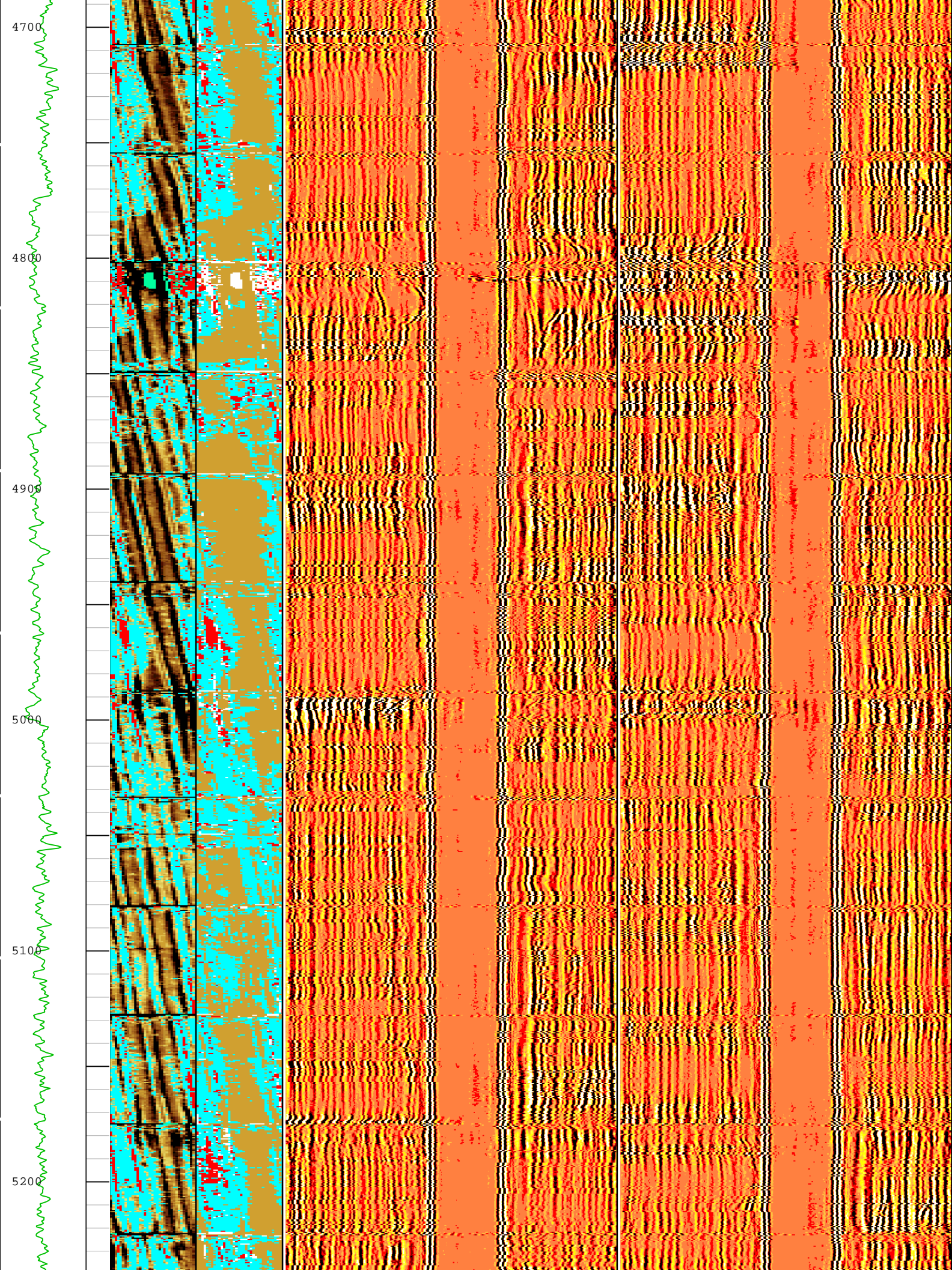


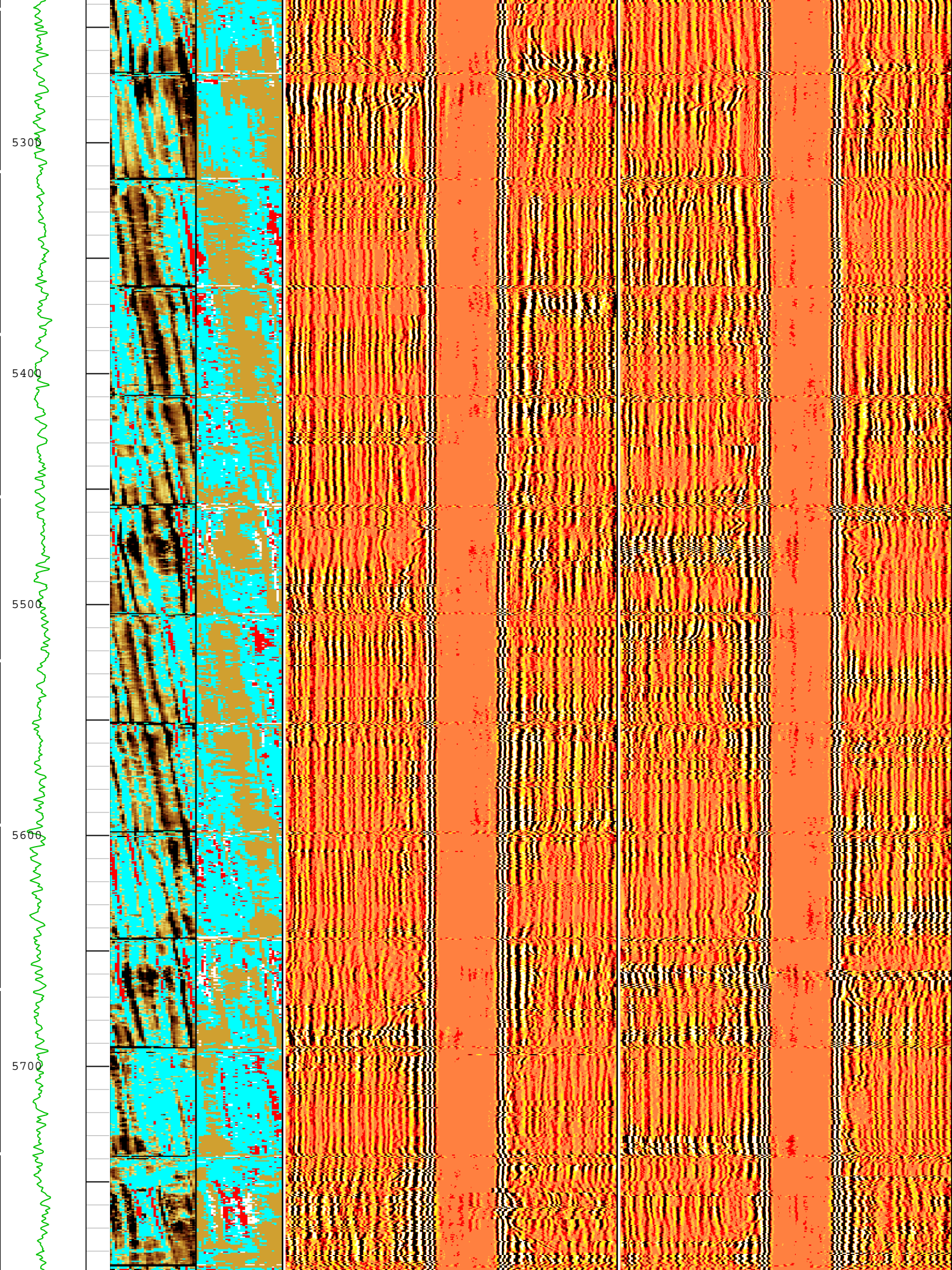


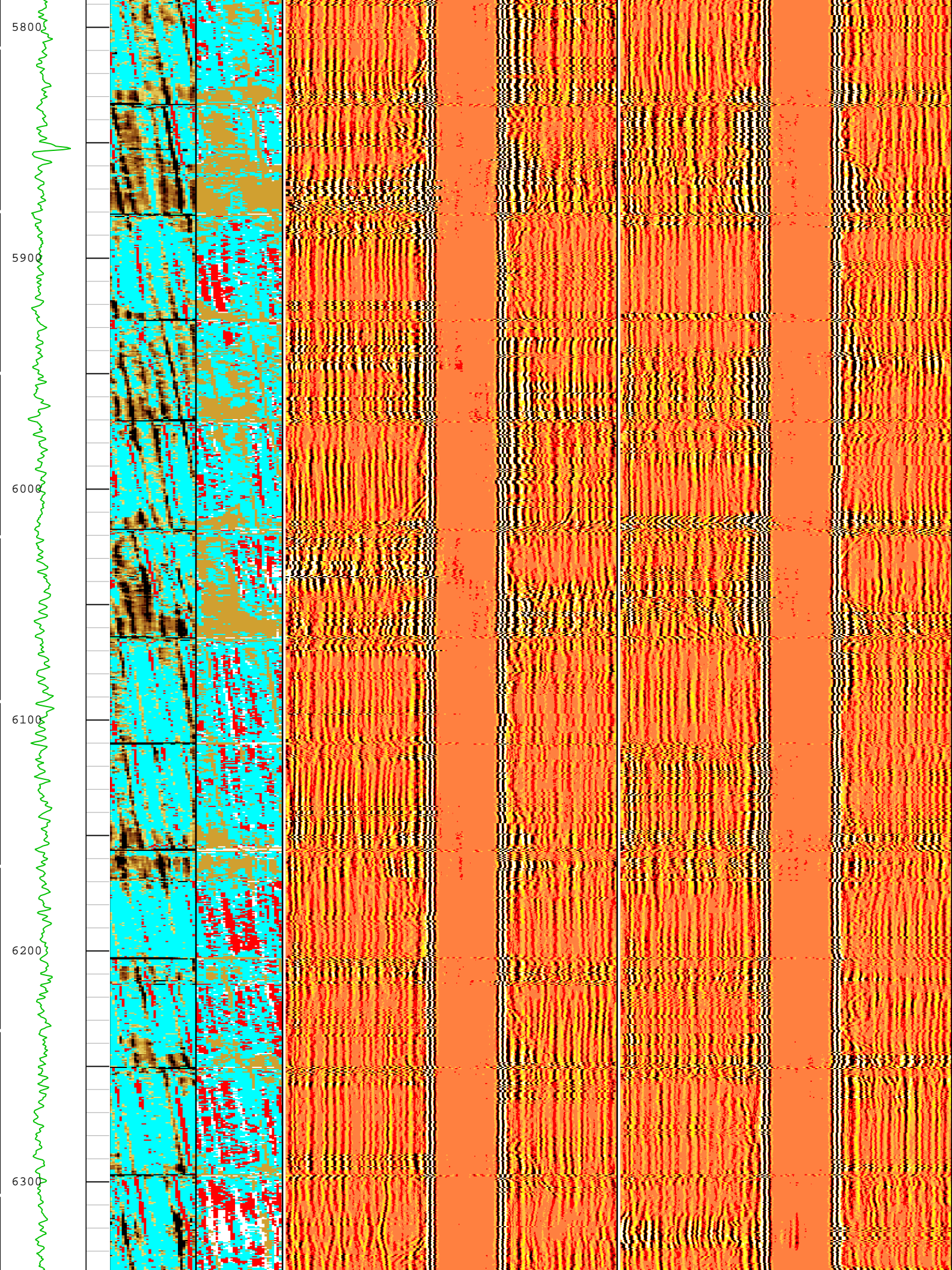


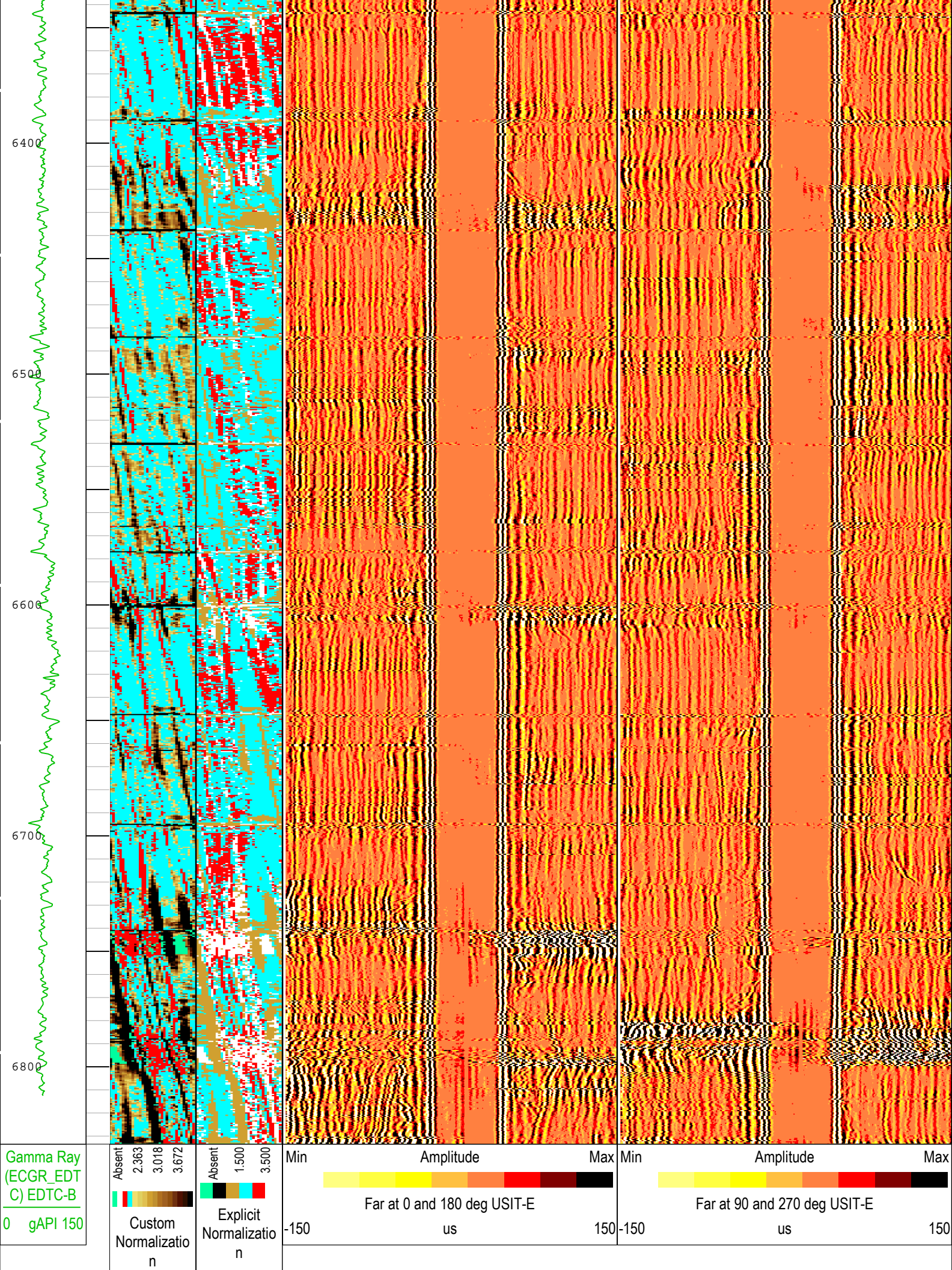












USIT - Acoustic Impedance (AIBK) USIT-E (Mrayl)	USIT - Solid Liquid Gas Sorted Color Map (USLP) USIT-E
--	--

TIME_1900 - Time Marked every 60.00 (s)

Description: USI IBC VDL WIDE Format: Log (IBC VDL WIDE) Index Scale: 2 in per 100 ft Index Unit: ft Index Type: Measured Depth Creation Date: 18-Oct-2018 17:58:07

Company: Crestone Peak Resources Operating LLC

Schlumberger

Well: Sam 3K-25H-M166

Field: Wattenberg

County:	Weld
State:	Colorado
Isolation Scanner	
Cement Evaluation	
VDL Wide	