

Company: Crestone Peak Resources Operating LLC

Well: Sam 3J-25H-M166

Field: Wattenberg

County: Weld State: Colorado

Isolation Scanner  
Cement Evaluation  
VDL Wide

Cement Evaluation

VDL Wide

Location:		NWSW Sec. 25, T1N, R66W		Elev.:		K.B. 5104.00 ft	
Log Measured From:		SHL: 1323' FSL & 310' FWL		G.L.		5081.00 ft	
Drilling Measured From:		Lat/Long: 40.018648 / -104.733855		D.F.		5104.00 ft	
Permanent Datum:		Ground Level		Elev.:		5081.00 f	
Log Measured From:		Kelly Bushing		23.00 ft		above Perm.Datum	
Drilling Measured From:		Kelly Bushing					
API Serial No.		Section:		Township:		Range:	
05-123-46129		25		1N		66W	

Run Number	1A	1B
Depth Driller	11890.00 ft	11890.00 ft
Schlumberger Depth	11890.00 ft	11890.00 ft
Bottom Log Interval	6605.00 ft	6605.00 ft
Top Log Interval	50.00 ft	50.00 ft
Casing Fluid Type	Fresh Water	Fresh Water
Salinity		
Density	8.4 lbm/gal	8.4 lbm/gal
Fluid Level	8.00 ft	8.00 ft
BIT/CASING/TUBING STRING		
Bit Size	8.50 in	8.50 in
From	2426.00 ft	2426.00 ft
To	11890.00 ft	11890.00 ft
Casing/Tubing Size	5.5 in	5.5 in
Weight	20 lbm/ft	20 lbm/ft
Grade	J55	J55
From	0.00 ft	0.00 ft
To	11878.00 ft	11878.00 ft
Max Recorded Temperatures	175 degF	175 degF
Logger on Bottom	18-Oct-2018	18-Oct-2018
Unit Number	9108	9108
Recorded By	Richard Woods	Richard Woods
Witnessed By	Keith Kershnik	Keith Kershnik

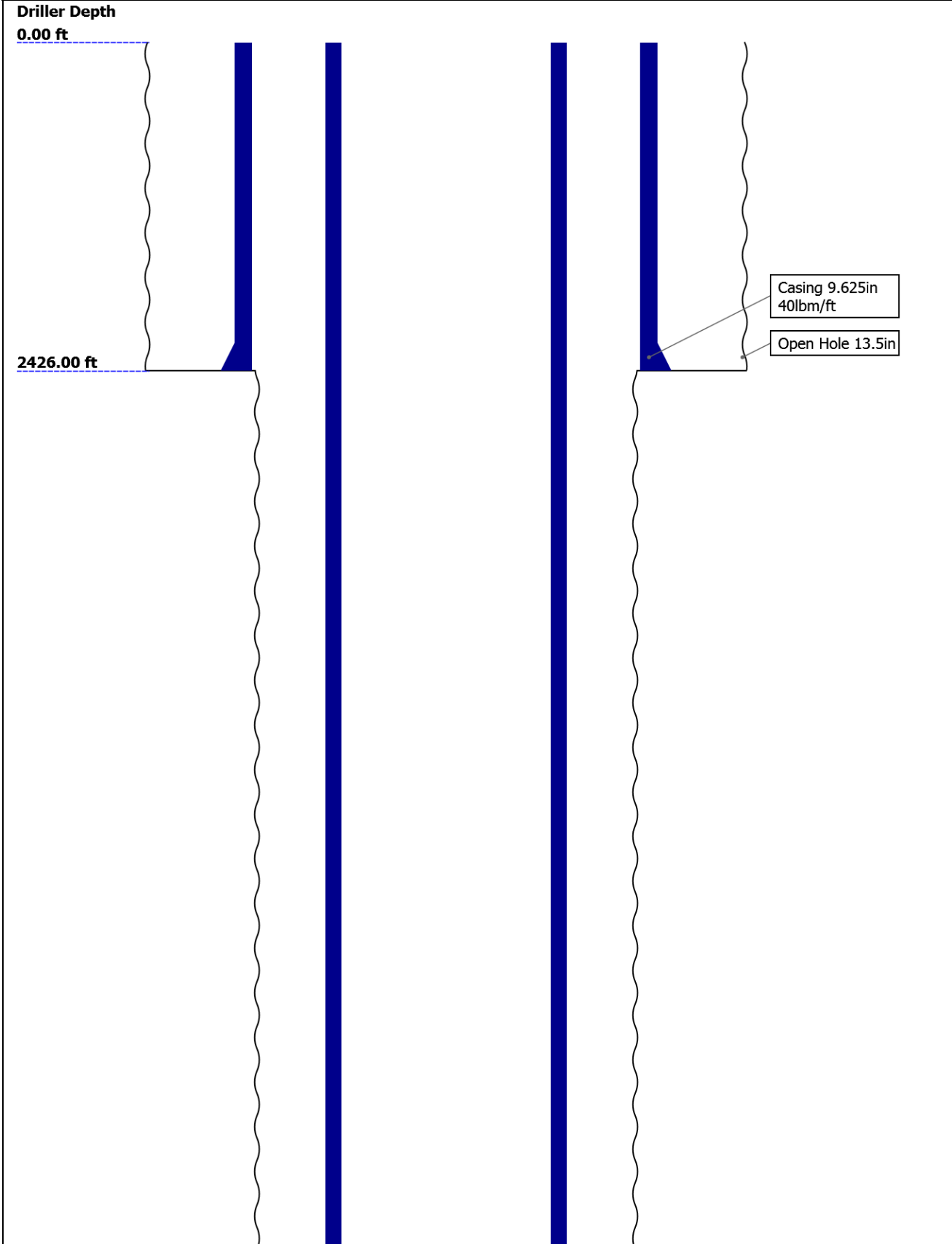
Disclaimer

THE USE OF AND RELIANCE UPON THIS RECORDED-DATA BY THE HEREIN NAMED COMPANY (AND ANY OF ITS AFFILIATES, PARTNERS, REPRESENTATIVES, AGENTS, CONSULTANTS AND EMPLOYEES) IS SUBJECT TO THE TERMS AND CONDITIONS AGREED UPON BETWEEN SCHLUMBERGER AND THE COMPANY, INCLUDING: (a) RESTRICTIONS ON USE OF THE RECORDED-DATA; (b) DISCLAIMERS AND WAIVERS OF WARRANTIES AND REPRESENTATIONS REGARDING COMPANY'S USE AND RELIANCE UPON THE RECORDED-DATA; AND (c) CUSTOMER'S FULL AND SOLE RESPONSIBILITY FOR ANY INFERENCE DRAWN OR DECISION MADE IN CONNECTION WITH THE USE OF THIS RECORDED-DATA.

Contents

- 1. Header
- 2. Disclaimer
- 3. Contents
- 4. Well Sketch
- 5. Borehole Size/Casing/Tubing Record
- 6. Remarks and Equipment Summary
- 7. Depth Summary
- 8. main IBC VDL Wide 0 PSI
  - 8.1 Integration Summary
  - 8.2 Composite Summary
  - 8.3 Log ( IBC VDL WIDE )
- 9. Tail

Well Sketch



11878.00 ft

11890.00 ft

Casing 5.5in  
20lbm/ft

Open Hole 8.5in

## Borehole Size/Casing/Tubing Record

Bit						
Bit Size ( in )	13.5	8.5				
Top Driller ( ft )	0	2426				
Top Logger ( ft )	0	2426				
Bottom Driller ( ft )	2426	11890				
Bottom Logger ( ft )	2426	11890				
Casing						
Size ( in )	9.625	5.5				
Weight ( lbm/ft )	40	20				
Inner Diameter ( in )	8.835	4.778				
Grade	J55	J55				
Top Driller ( ft )	0	0				
Top Logger ( ft )	0	0				
Bottom Driller ( ft )	2426	11878				
Bottom Logger ( ft )	2426	11878				

## Remarks and Equipment Summary

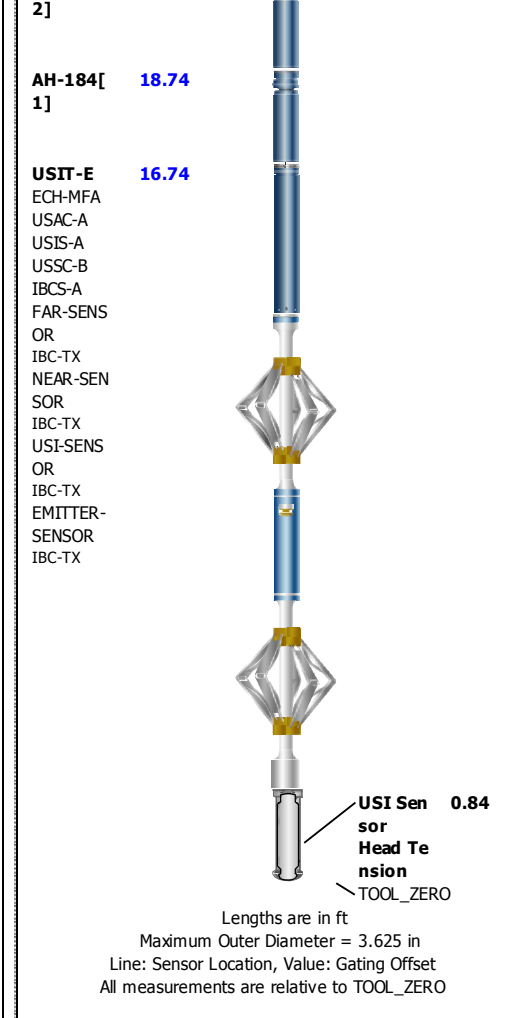
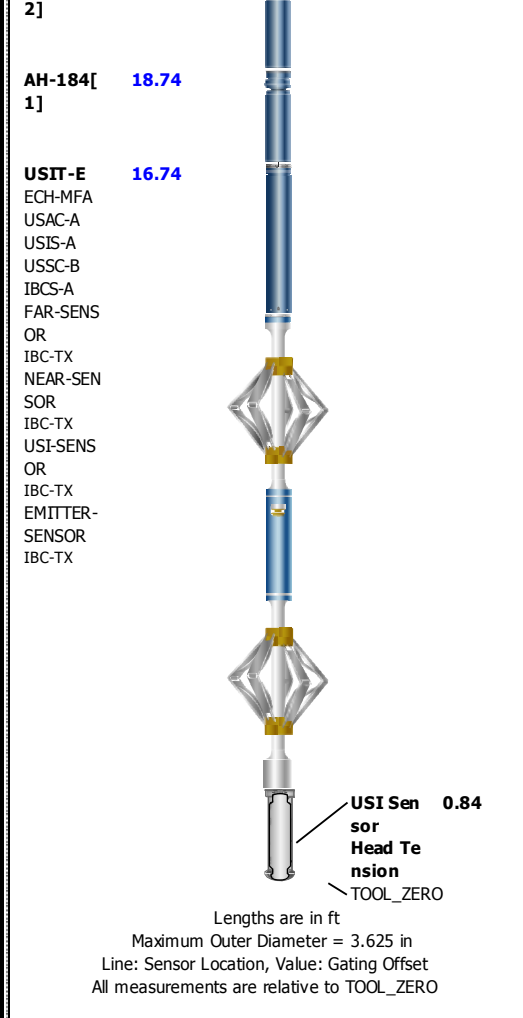
Thank you for choosing Schlumberger!	
Tool string run as per tool sketch and client logging program.	
5" Gemcos and in-line centralizers with small hole kit used for centralization.	
All passes run under 0 PSI.	
Lead: 12.5 ppg Tail: 13.5 ppg Spacer: 12 ppg	
1A: Remarks	1B: Remarks

### 1A: Toolstring

Equip name	Length	MP name	Offset
LEH-QT	30.73		
LEH-QT			
EDTC-B	27.24		
EDTH-B			
EDTG-A			
EDTC-B			
		CTEM	23.74
		ACCZ	0.00
		HV	0.00
		Gamma	21.87
		Ray	
		TelStatu	20.74
		s	
AH-184[	20.74		

### 1B: Toolstring

Equip name	Length	MP name	Offset
LEH-QT	30.73		
LEH-QT			
EDTC-B	27.24		
EDTH-B			
EDTG-A			
EDTC-B			
		CTEM	23.74
		ACCZ	0.00
		HV	0.00
		Gamma	21.87
		Ray	
		TelStatu	20.74
		s	
AH-184[	20.74		



Depth Summary			
	1A	1B	
Depth Measuring Device			
Type	IDW-B	IDW-B	
Serial Number	6455	6455	
Calibration Date	27-Jul-2018	27-Jul-2018	
Calibrator Serial Number	57	57	
Calibration Cable Type	7-32ASXS	7-32ASXS	
Wheel Correction 1	-1	-1	
Wheel Correction 2	1	1	
Tension Device			
Type	CMTD-B/A	CMTD-B/A	
Serial Number	1703	1703	
Calibration Date	29-Jul-2018	29-Jul-2018	
Calibrator Serial Number	88310A	88310A	
Number of Calibration Points	10	10	
Calibration Root Mean Square Error	6	6	
Calibration Peak Error	9	9	
Logging Cable			
Type	7-32AS-XS	7-32AS-XS	
Serial Number			
Length	21111.00 ft	21111.00 ft	

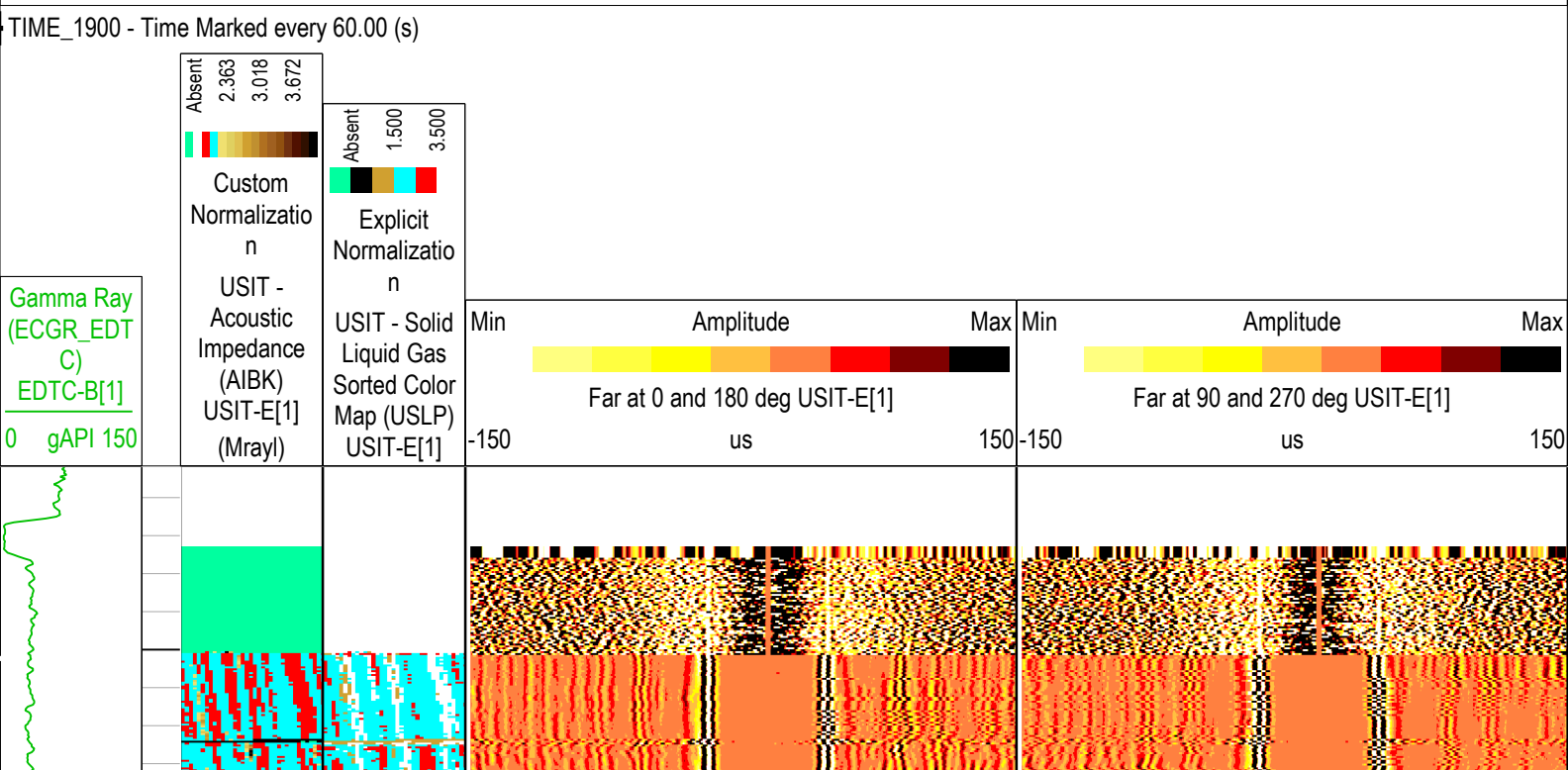
Conveyance Type	Wireline	Wireline	
Rig Type	Crane USA	Crane USA	
1A:Depth Control Parameters		Depth Control Remarks	
Log Sequence	First Log In the Well		
Rig Up Length At Surface			
Rig Up Length At Bottom			
Rig Up Length Correction			
Stretch Correction			
Tool Zero Check At Surface			
1B:Depth Control Parameters		Depth Control Remarks	
Log Sequence	First Log In the Well	All Schumberger depth control procedures followed.  IDW used for primary depth control.  Zchart used for secondary depth control.  Logs correlated to down log.	
Rig Up Length At Surface			
Rig Up Length At Bottom			
Rig Up Length Correction			
Stretch Correction			
Tool Zero Check At Surface			

main			
IBC VDL Wide 0 PSI			

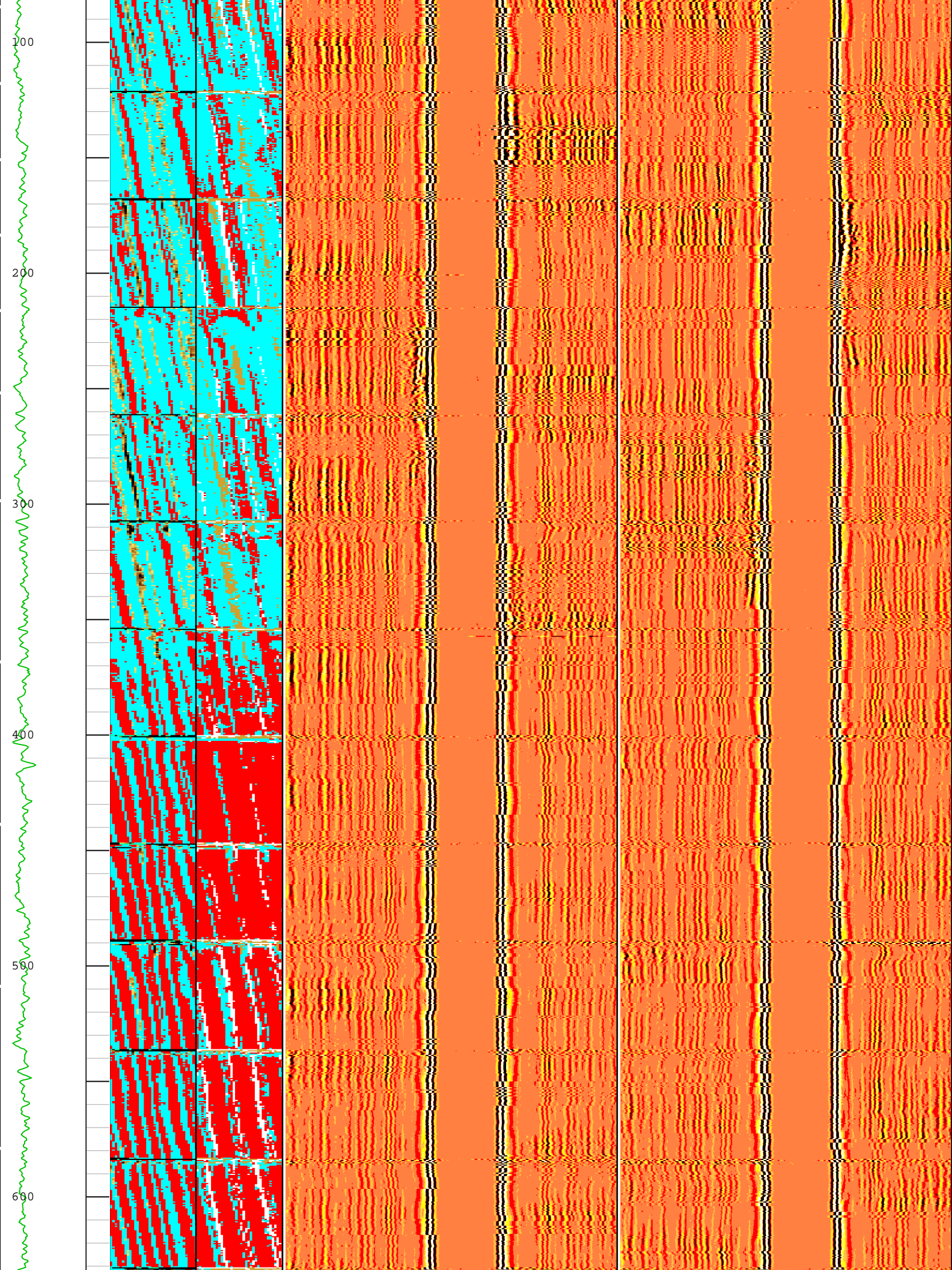
Composite Summary									
Run Name	Pass Objective	Direction	Top	Bottom	Start	Stop	DSC Mode	Depth Shift	Include Parallel Data
1A	Log[3]:Up	Up	23.56 ft	6751.53 ft	18-Oct-2018 9:34:10 AM	18-Oct-2018 11:16:16 AM	ON	5.11 ft	Yes
1B	Log[2]:Up	Up	4937.78 ft	6606.03 ft	18-Oct-2018 12:36:52 PM	18-Oct-2018 1:00:38 PM	ON	5.11 ft	Yes

All depths are referenced to toolstring zero		
Log	Company:Crestone Peak Resources Operating LLC	Well:Sam 3J-25H-M166 main:S004

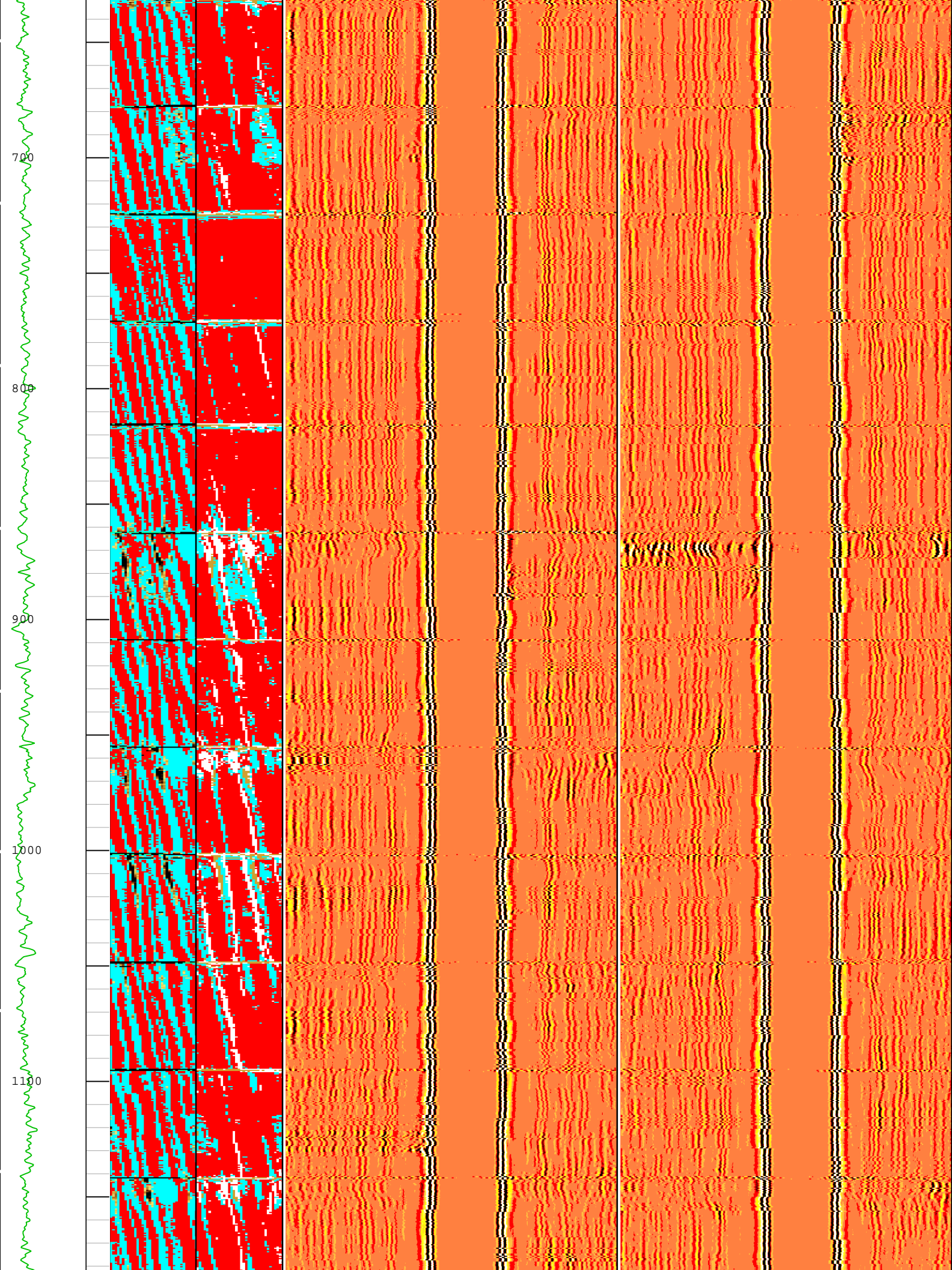
Description: USI IBC VDL WIDE    Format: Log ( IBC VDL WIDE )    Index Scale: 2 in per 100 ft    Index Unit: ft    Index Type: Measured Depth    Creation Date: 18-Oct-2018 18:49:53



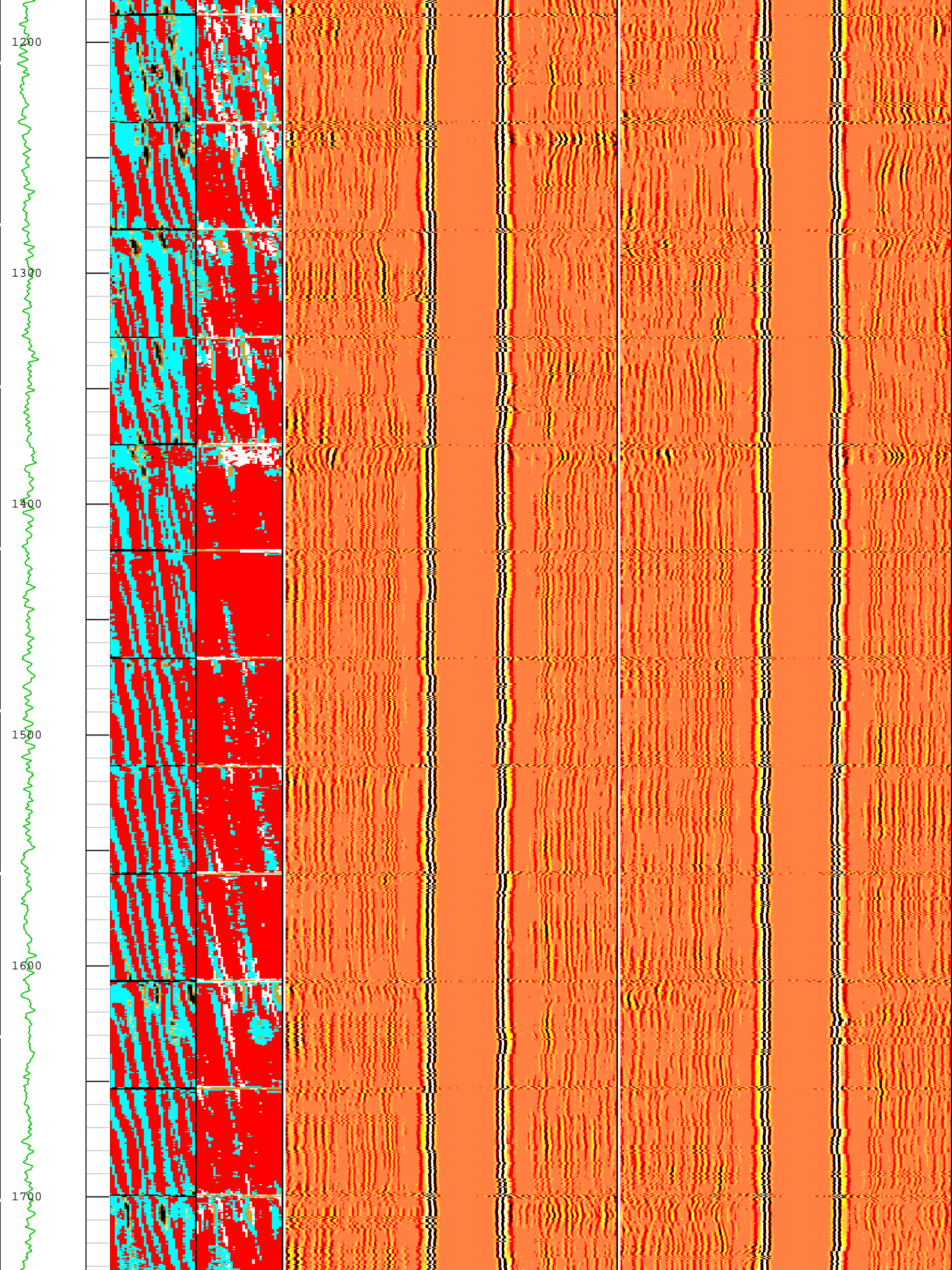




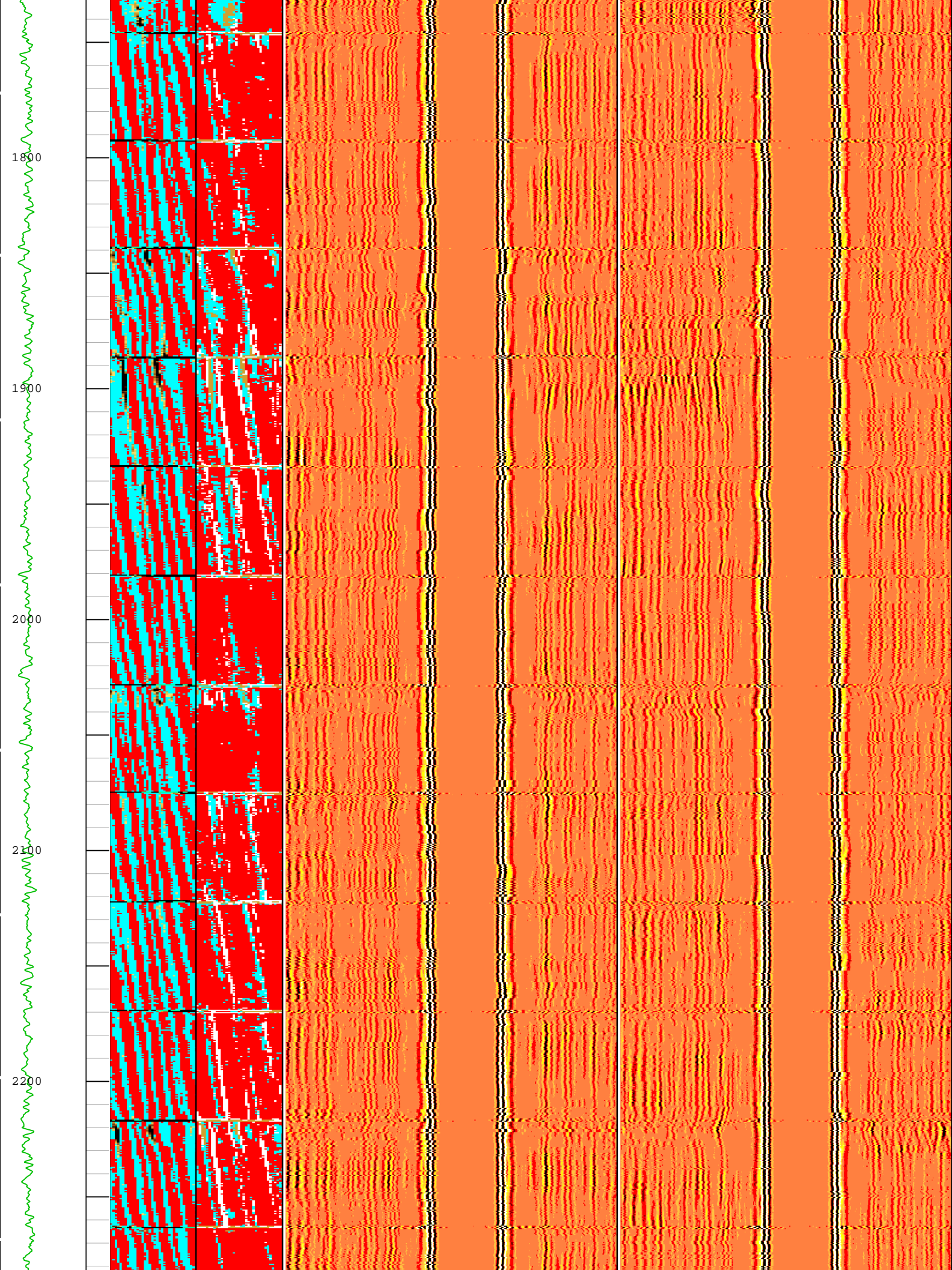




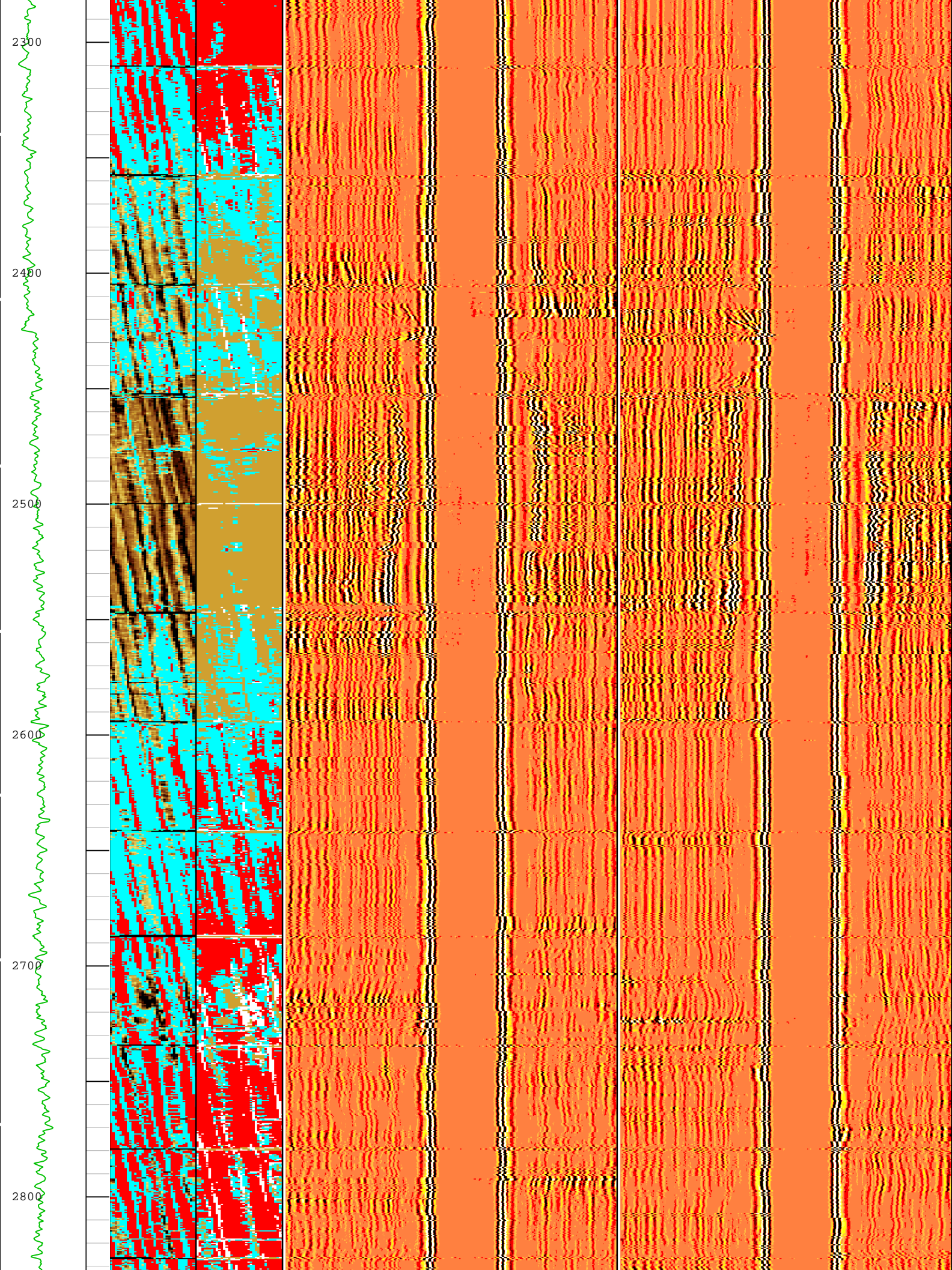




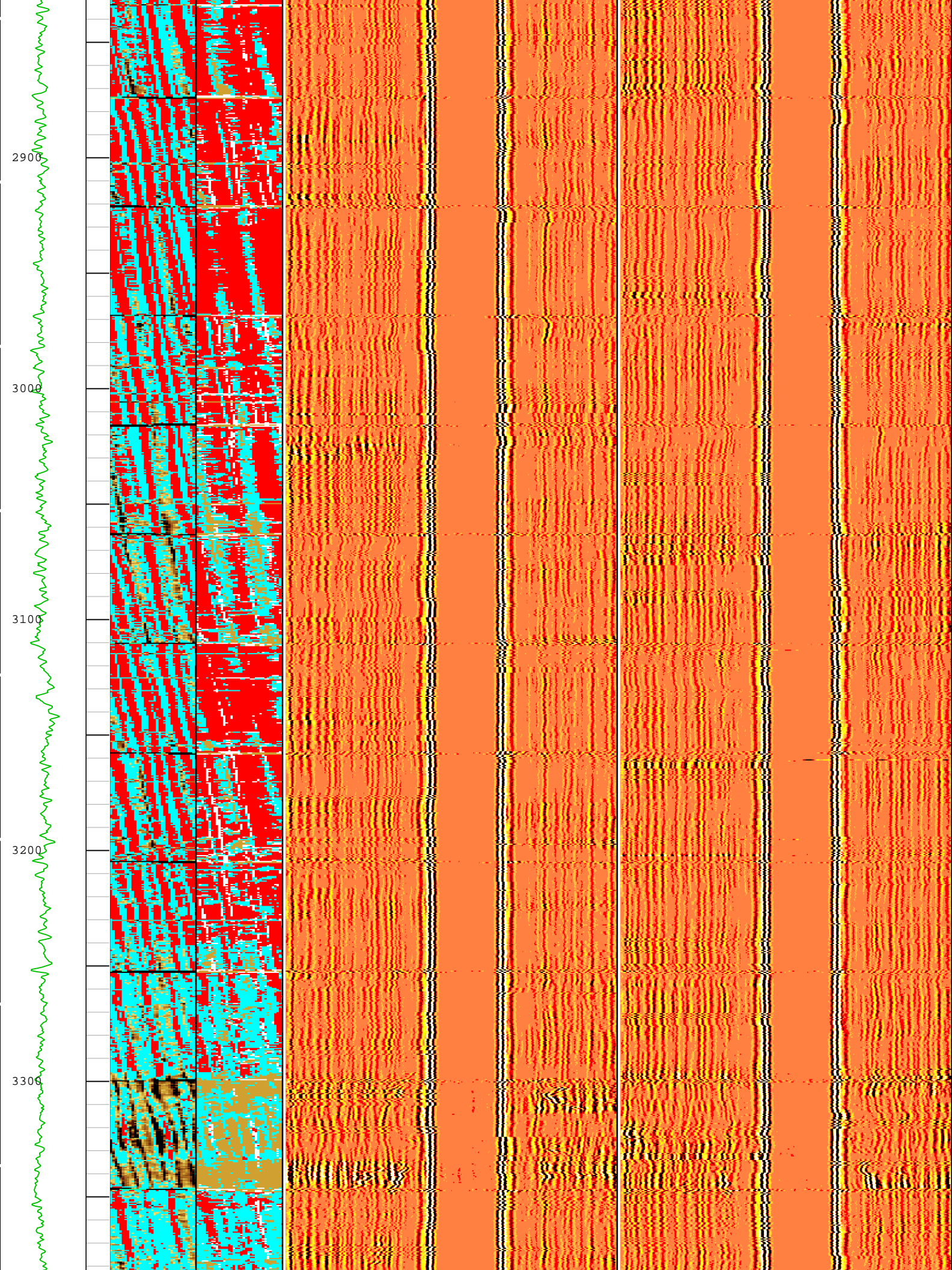




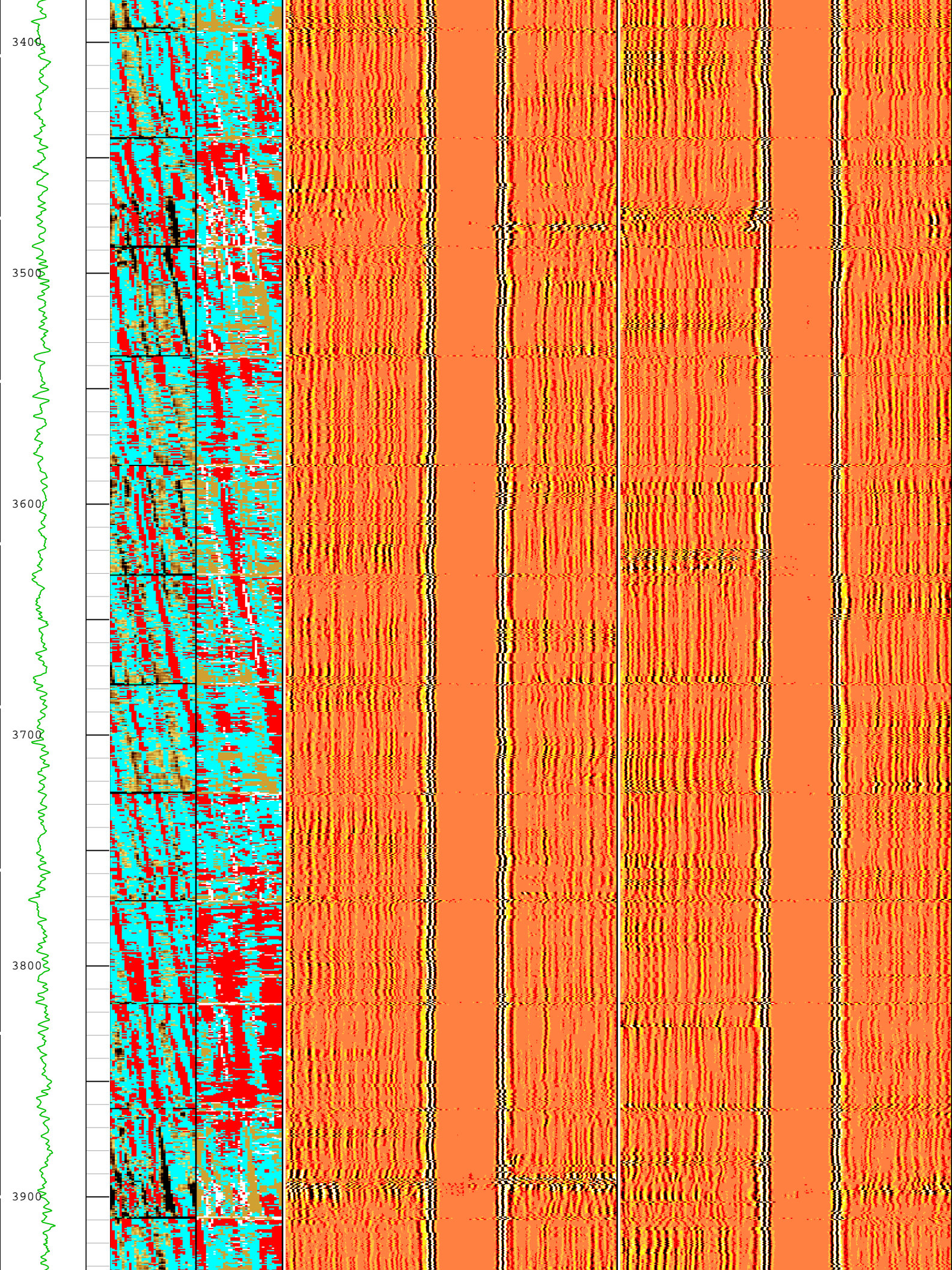




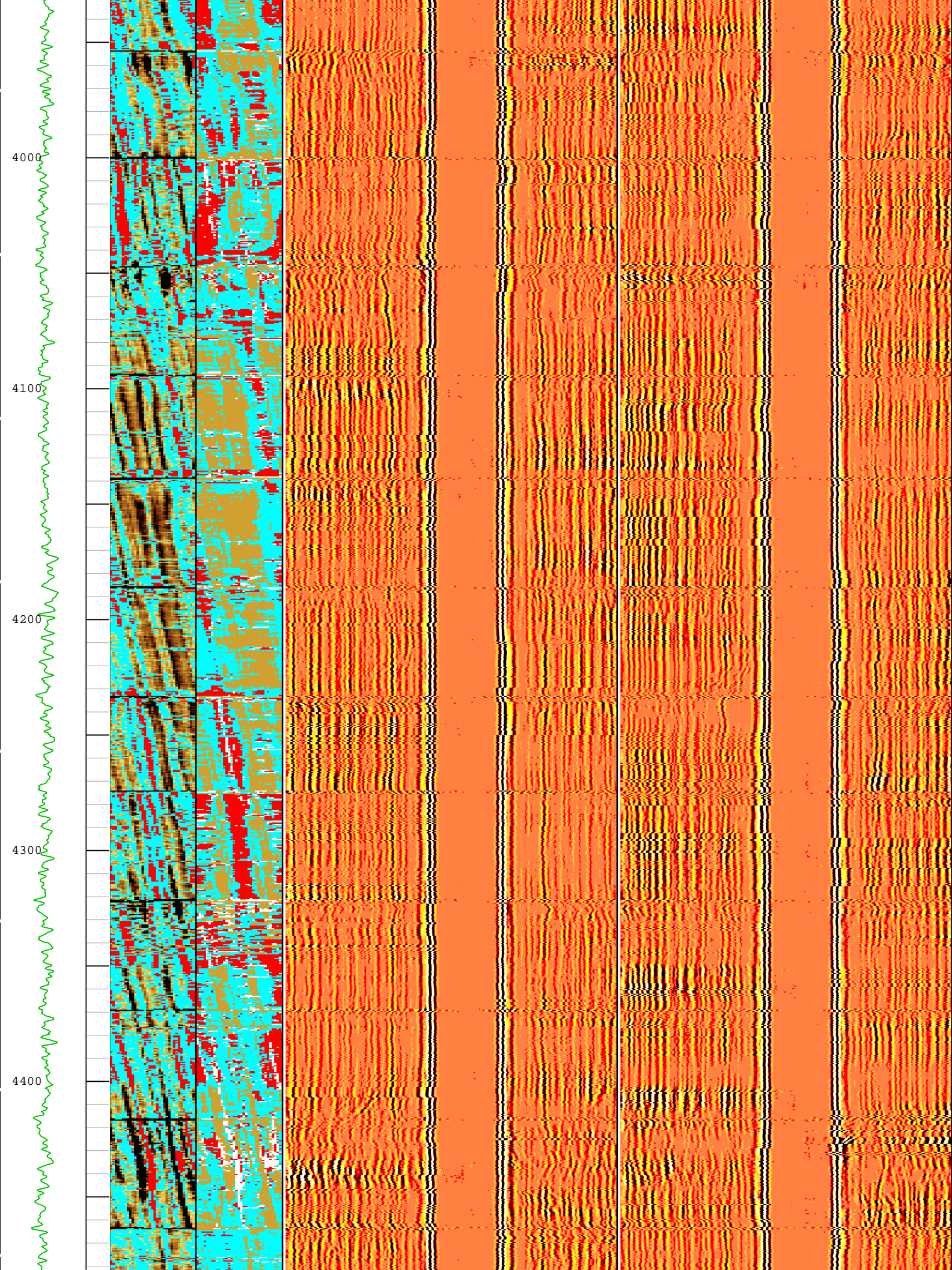




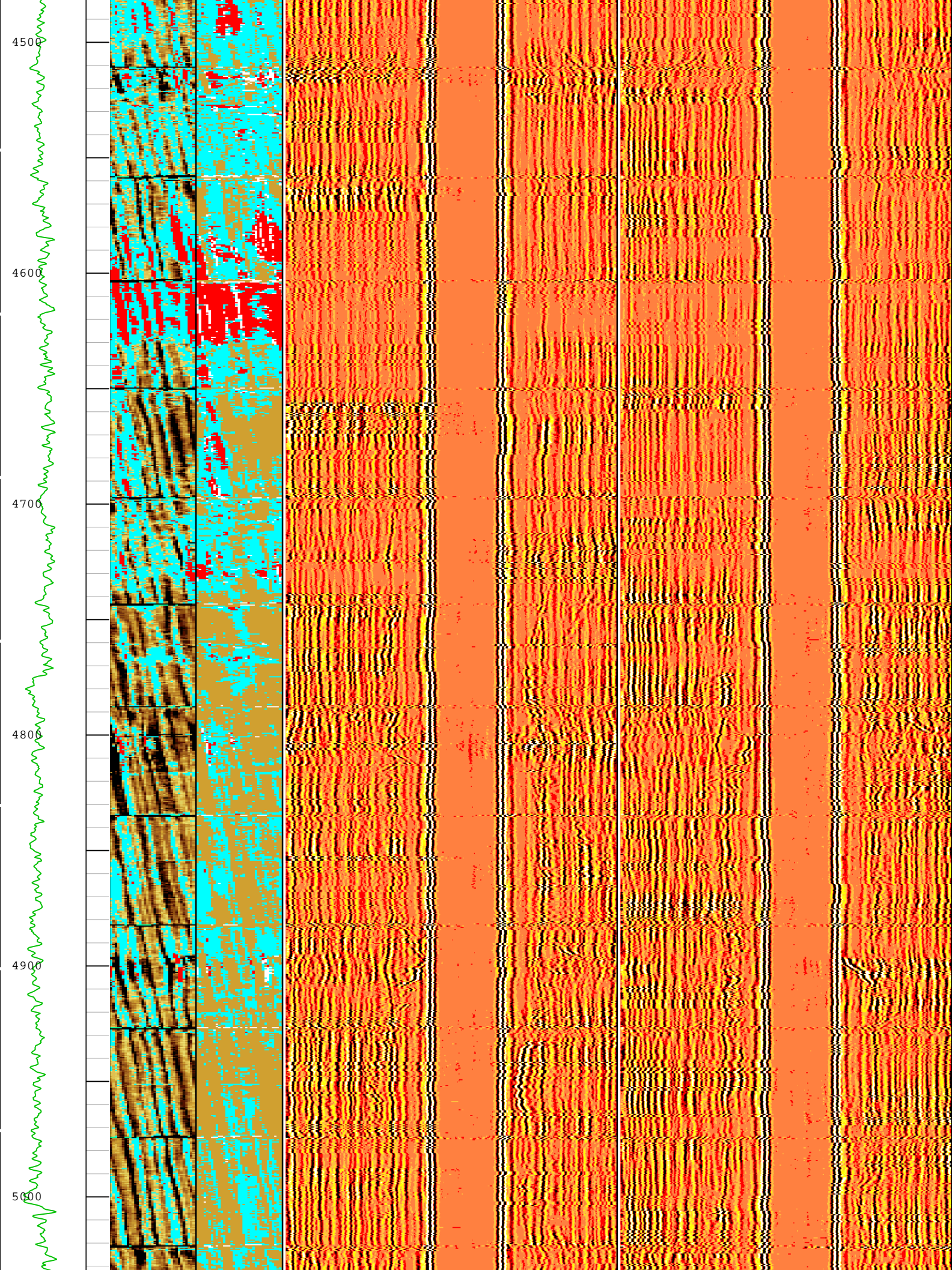




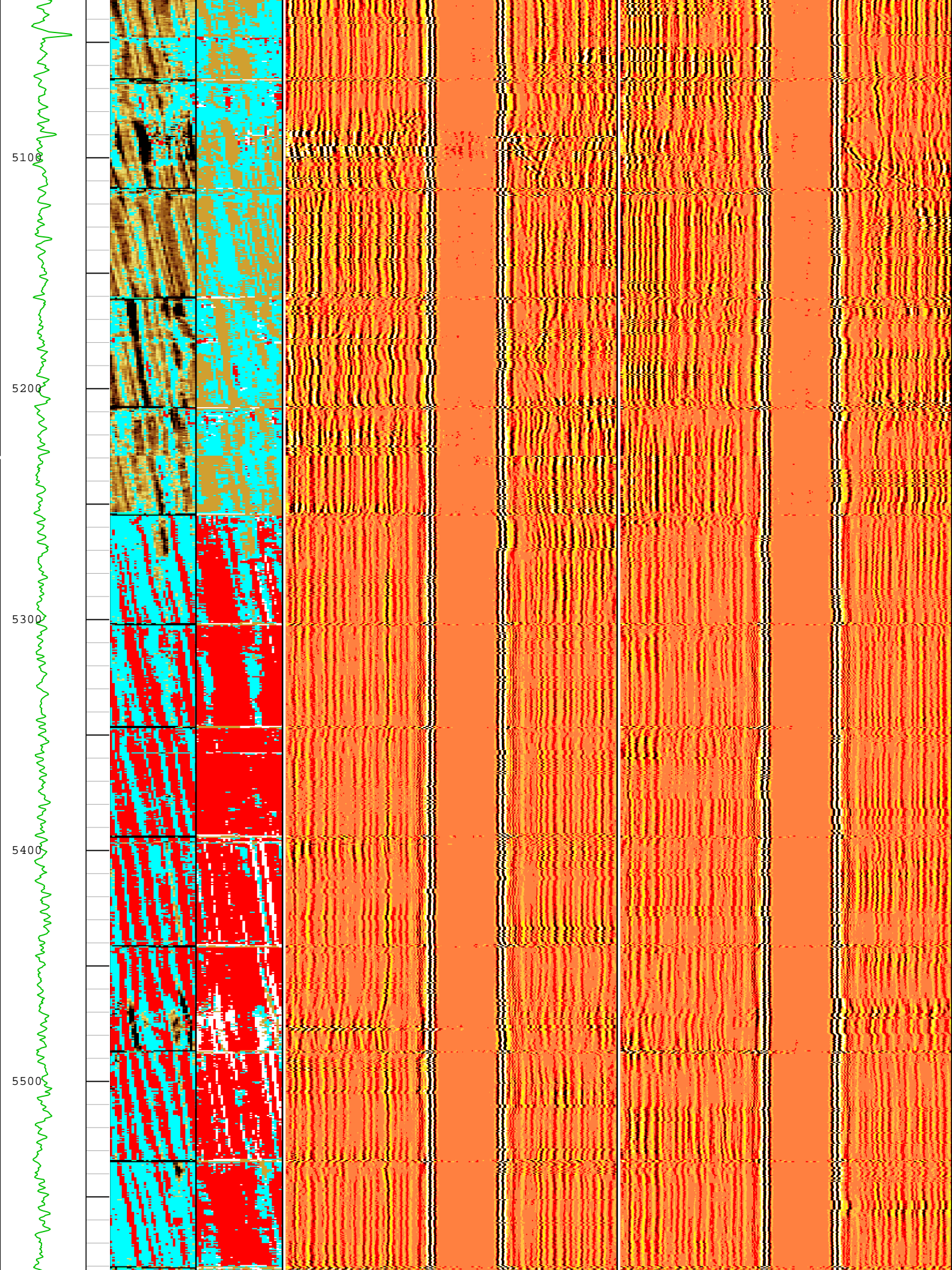




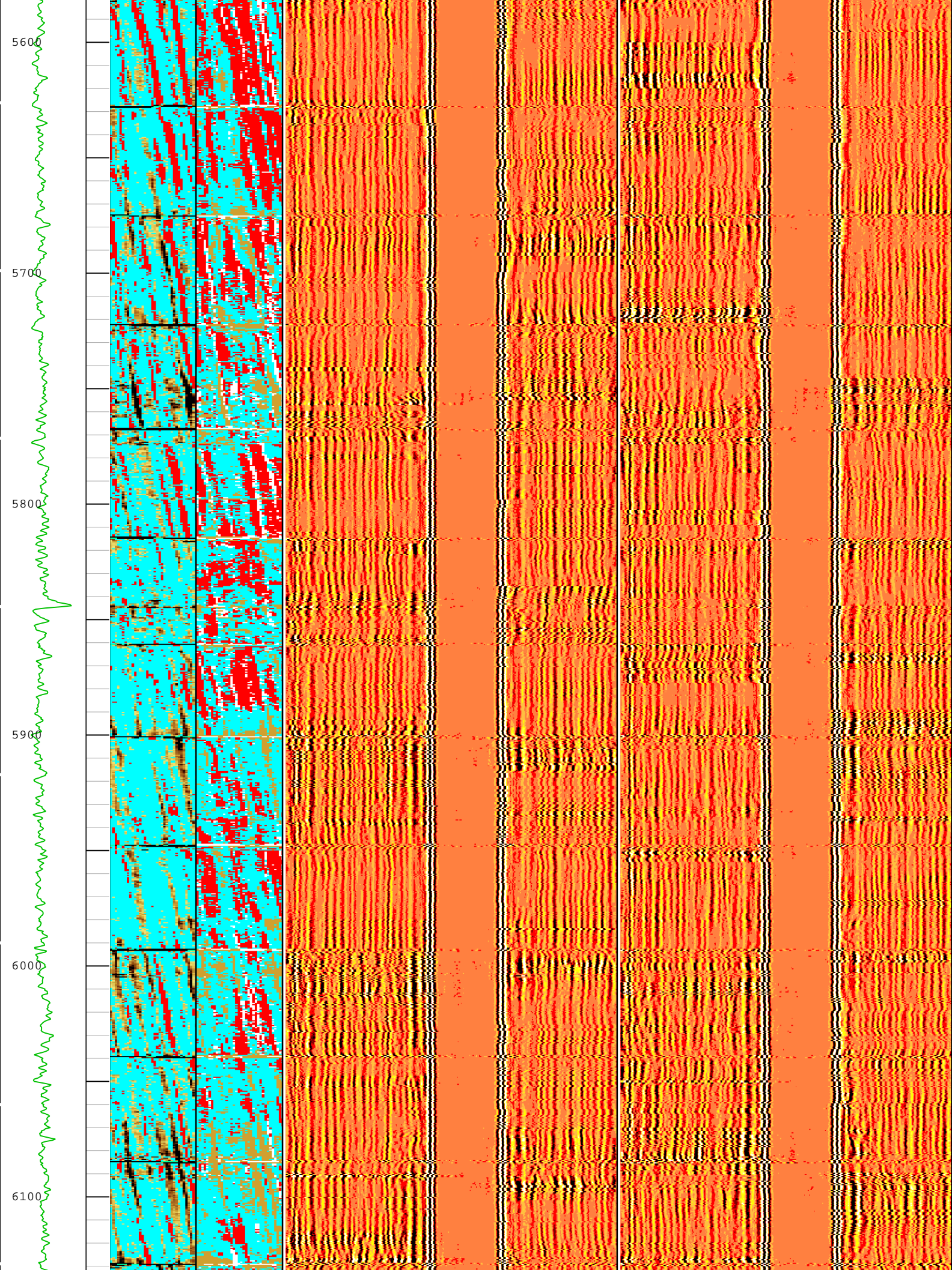




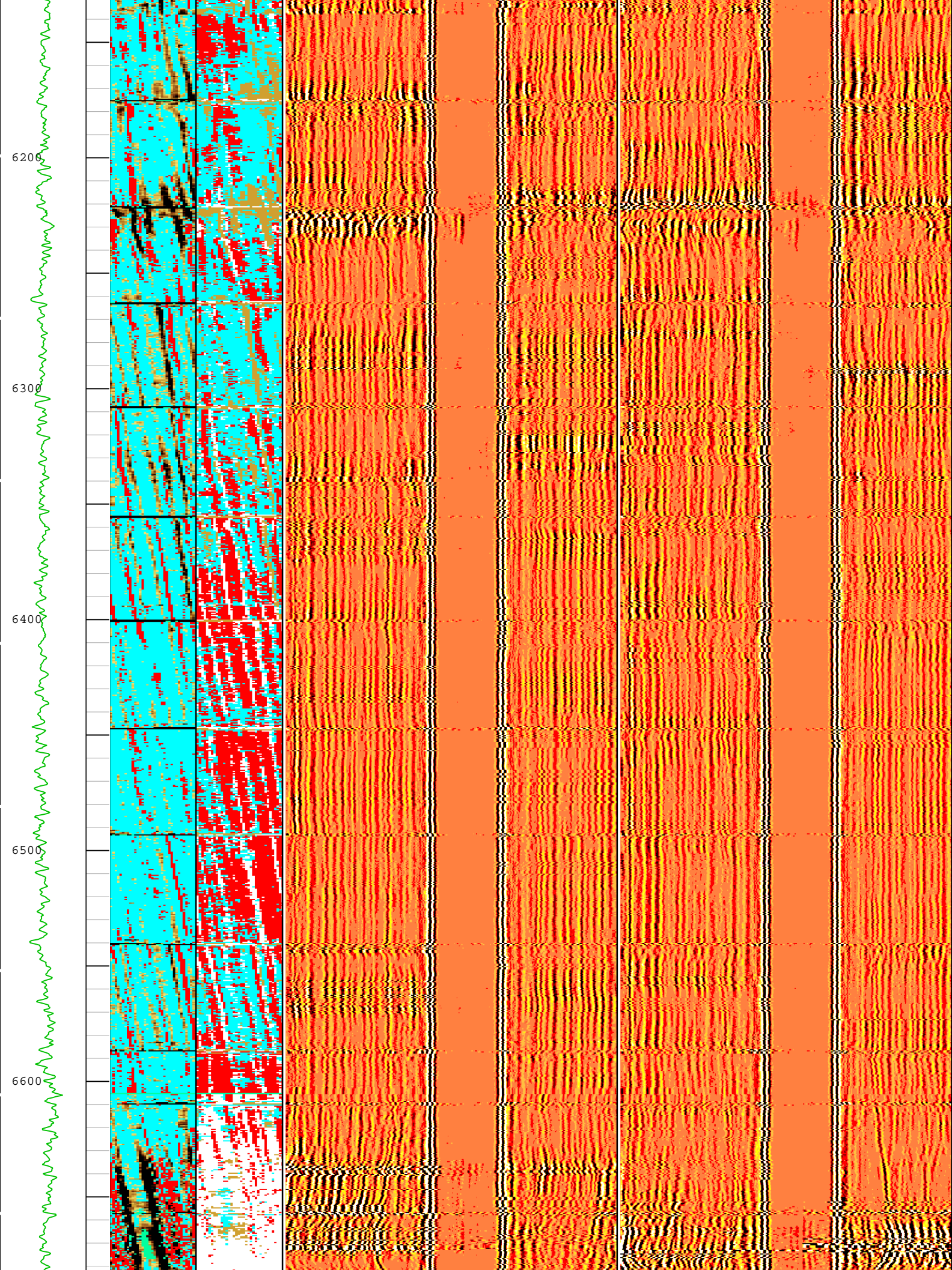




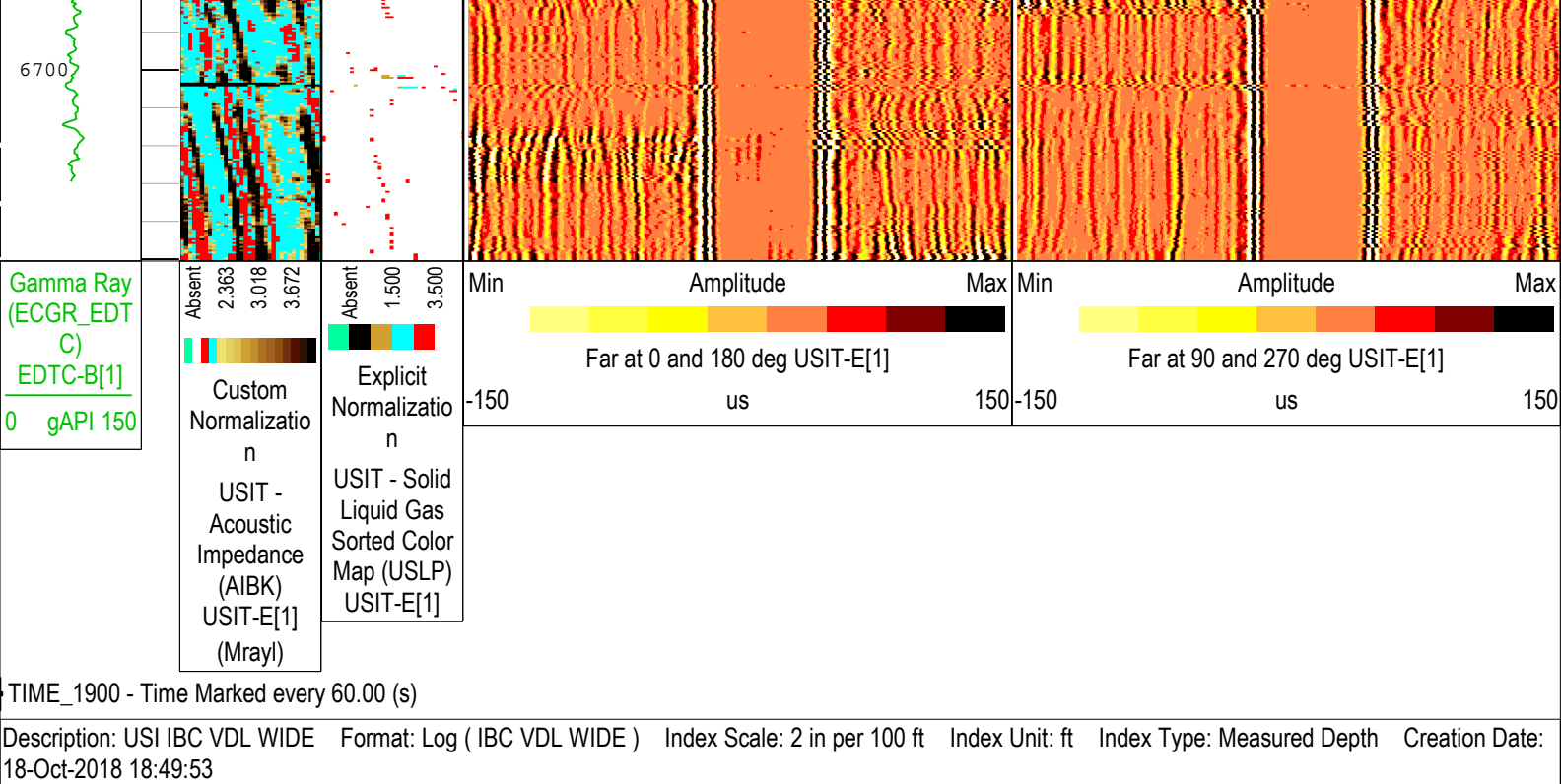












Company: Crestone Peak Resources Operating LLC

**Schlumberger**

Well: Sam 3J-25H-M166

Field: Wattenberg



County:	Weld
State:	Colorado
Isolation Scanner	
Cement Evaluation	
VDL Wide	