

Company: Crestone Peak Resources Operating LLC

Well: Sam #3G-25H-M166

Field: Wattenberg

County: Weld State: Colorado

Isolation Scanner
Cement Evaluation
VDL Wide

County:	Weld			
Field:	Wattenberg			
Location:	1353' FSL & 310' FWL			
Well:	Sam #3G-25H-M166			
Company:	Crestone Peak Resources Operating LLC			
Location:		1353' FSL & 310' FWL	Elev.:	K.B. 5105.00 ft
		NWSW 25 1N 66W		G.L. 5082.00 ft
		Lat/Long: 40.01873 / -104.733854		D.F. 5105.00 ft
		Permanent Datum:	Ground Level	Elev.: 5082.00 f
Log Measured From:		Kelly Bushing		23.00 ft
Drilling Measured From:		Kelly Bushing		above Perm.Datum
API Serial No.		Section:	Township:	Range:
05-123-46132		25	1N	66W
Logging Date	14-Oct-2018			

Run Number	One
Depth Driller	11770.00 ft
Schlumberger Depth	6720.00 ft
Bottom Log Interval	6720.00 ft
Top Log Interval	50.00 ft
Casing Fluid Type	Water
Salinity	
Density	8.4 lbm/gal
Fluid Level	8.00 ft
BIT/CASING/TUBING STRING	
Bit Size	8.50 in
From	2357.00 ft
To	11770.00 ft
Casing/Tubing Size	5.5 in
Weight	20 lbm/ft
Grade	N/A
From	0.00 ft
To	11760.00 ft
Max Recorded Temperatures	179 degF
Logger on Bottom	14-Oct-2018
Unit Number	9108
Recorded By	Alan Moreno
Witnessed By	Keith Kershnik

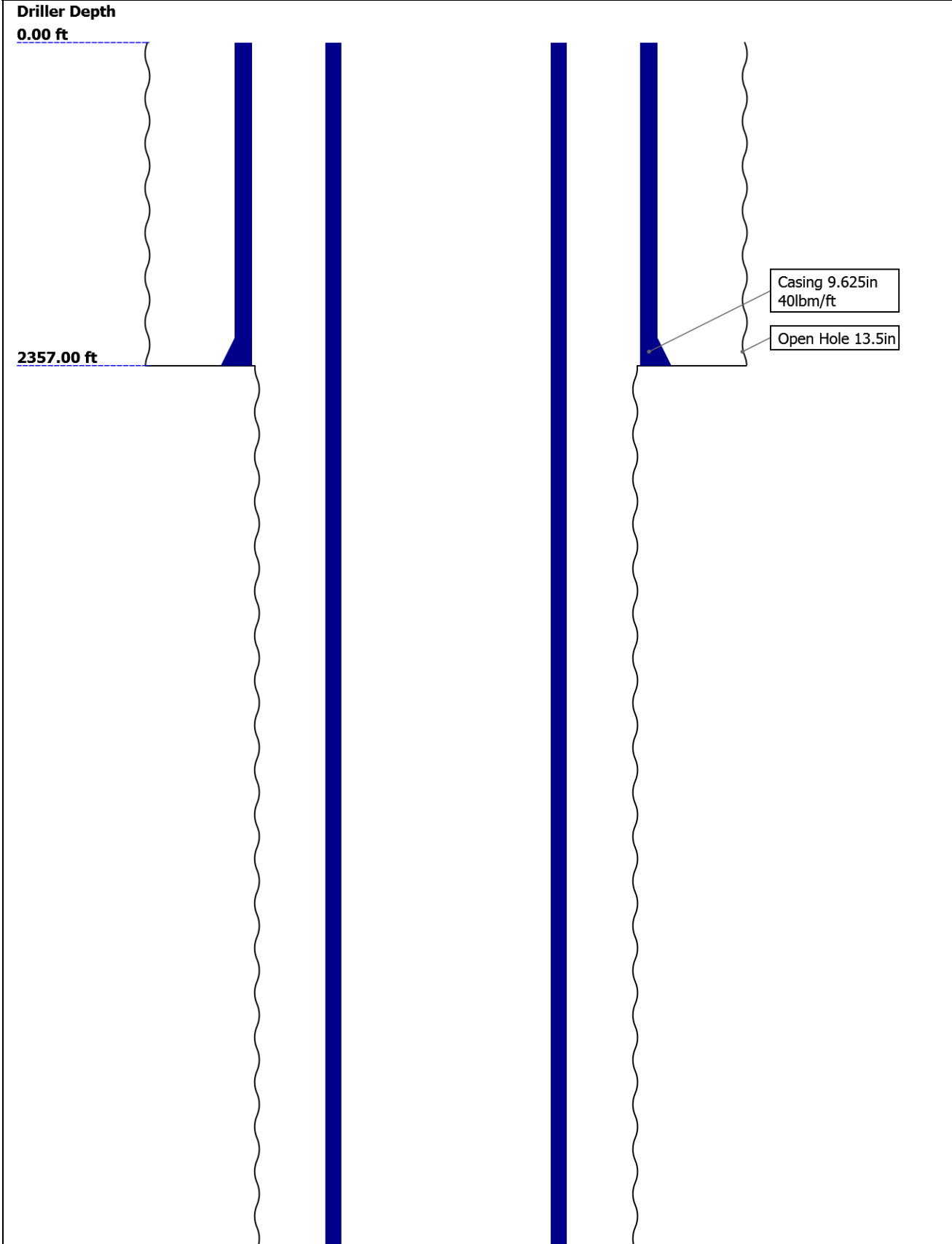
Disclaimer

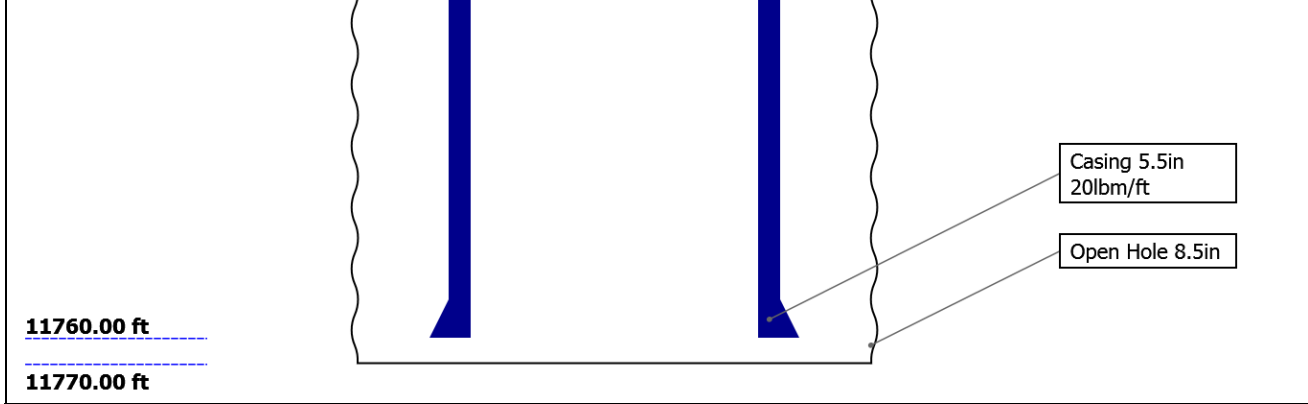
THE USE OF AND RELIANCE UPON THIS RECORDED-DATA BY THE HEREIN NAMED COMPANY (AND ANY OF ITS AFFILIATES, PARTNERS, REPRESENTATIVES, AGENTS, CONSULTANTS AND EMPLOYEES) IS SUBJECT TO THE TERMS AND CONDITIONS AGREED UPON BETWEEN SCHLUMBERGER AND THE COMPANY, INCLUDING: (a) RESTRICTIONS ON USE OF THE RECORDED-DATA; (b) DISCLAIMERS AND WAIVERS OF WARRANTIES AND REPRESENTATIONS REGARDING COMPANY'S USE AND RELIANCE UPON THE RECORDED-DATA; AND (c) CUSTOMER'S FULL AND SOLE RESPONSIBILITY FOR ANY INFERENCE DRAWN OR DECISION MADE IN CONNECTION WITH THE USE OF THIS RECORDED-DATA.

Contents

- 1. Header
- 2. Disclaimer
- 3. Contents
- 4. Well Sketch
- 5. Borehole Size/Casing/Tubing Record
- 6. Remarks and Equipment Summary
- 7. Depth Summary
- 8. Composite 1 IBC VDL Wide 0 PSI
 - 8.1 Integration Summary
 - 8.2 Composite Summary
 - 8.3 Log (IBC VDL WIDE)
- 9. Tail

Well Sketch





Borehole Size/Casing/Tubing Record

Bit						
Bit Size (in)	13.5	8.5				
Top Driller (ft)	0	2357				
Top Logger (ft)	0	2357				
Bottom Driller (ft)	2357	11770				
Bottom Logger (ft)	2357	11770				
Casing						
Size (in)	9.625	5.5				
Weight (lbm/ft)	40	20				
Inner Diameter (in)	8.835	4.778				
Grade	N/A	N/A				
Top Driller (ft)	0	0				
Top Logger (ft)	0	0				
Bottom Driller (ft)	2357	11760				
Bottom Logger (ft)	2357	11760				

Remarks and Equipment Summary

One: Toolstring				One: Remarks	
<div><div><div>Equip nameLength</div><div>LEH-QT30.73</div><div>LEH-QT</div></div><div><div>EDTC-B27.24</div><div>EDTH-B</div><div>EDTG-A</div><div>EDTC-B</div></div><div><div>AH-184[2]20.74</div><div>AH-184[1]18.74</div><div>USIT-E16.74</div><div>ECH-MFA</div><div>USAC-A</div><div>USIS-A</div><div>USSC-B</div><div>IBCS-A</div><div>EAB-GENC</div></div></div> <div><div><div>CTEM23.74</div><div>ACCZ0.00</div><div>HV0.00</div><div>Gamma21.87</div><div>Ray</div><div>TelStatu20.74</div><div>s</div></div></div>	Thank you for choosing Schlumberger				
	Toolstring ran as per tool sketch				
	5" gemcos and houma kit ran for centralization				
	All passes ran with 0psi				
	Lead: 12.5ppg				
	Tail: 13.5ppg				
	10deg 6" resolution used for main and repeat pass				
	Data affected at bottom due to high deviation				

<div data-bbox="220 0 331 569"> </div> <div data-bbox="86 594 445 684"> <p>Lengths are in ft Maximum Outer Diameter = 3.625 in Line: Sensor Location, Value: Gating Offset All measurements are relative to TOOL_ZERO</p> </div>		
---	--	--

Depth Summary			
	One		
Depth Measuring Device			
Type	IDW-B		
Serial Number	6455		
Calibration Date	27-Jul-2018		
Calibrator Serial Number	57		
Calibration Cable Type	7-32ASXS		
Wheel Correction 1	-1		
Wheel Correction 2	1		
Tension Device			
Type	CMTD-B/A		
Serial Number	1703		
Calibration Date	29-Jul-2018		
Calibrator Serial Number	88310A		
Number of Calibration Points	10		
Calibration Root Mean Square Error	6		
Calibration Peak Error	9		
Logging Cable			
Type	7-32AS-XS		
Serial Number			
Length	21111.00 ft		
Conveyance Type	Wireline		
Rig Type			
One:Depth Control Parameters		Depth Control Remarks	
Log Sequence	First Log In the Well	All Schlumberger depth control procedures followed IDW used as primary depth control, Z-chart used as secondary	
Rig Up Length At Surface			
Rig Up Length At Bottom			
Rig Up Length Correction			

Stretch Correction
Tool Zero Check At Surface

Composite 1

IBC VDL Wide 0 PSI

Composite Summary

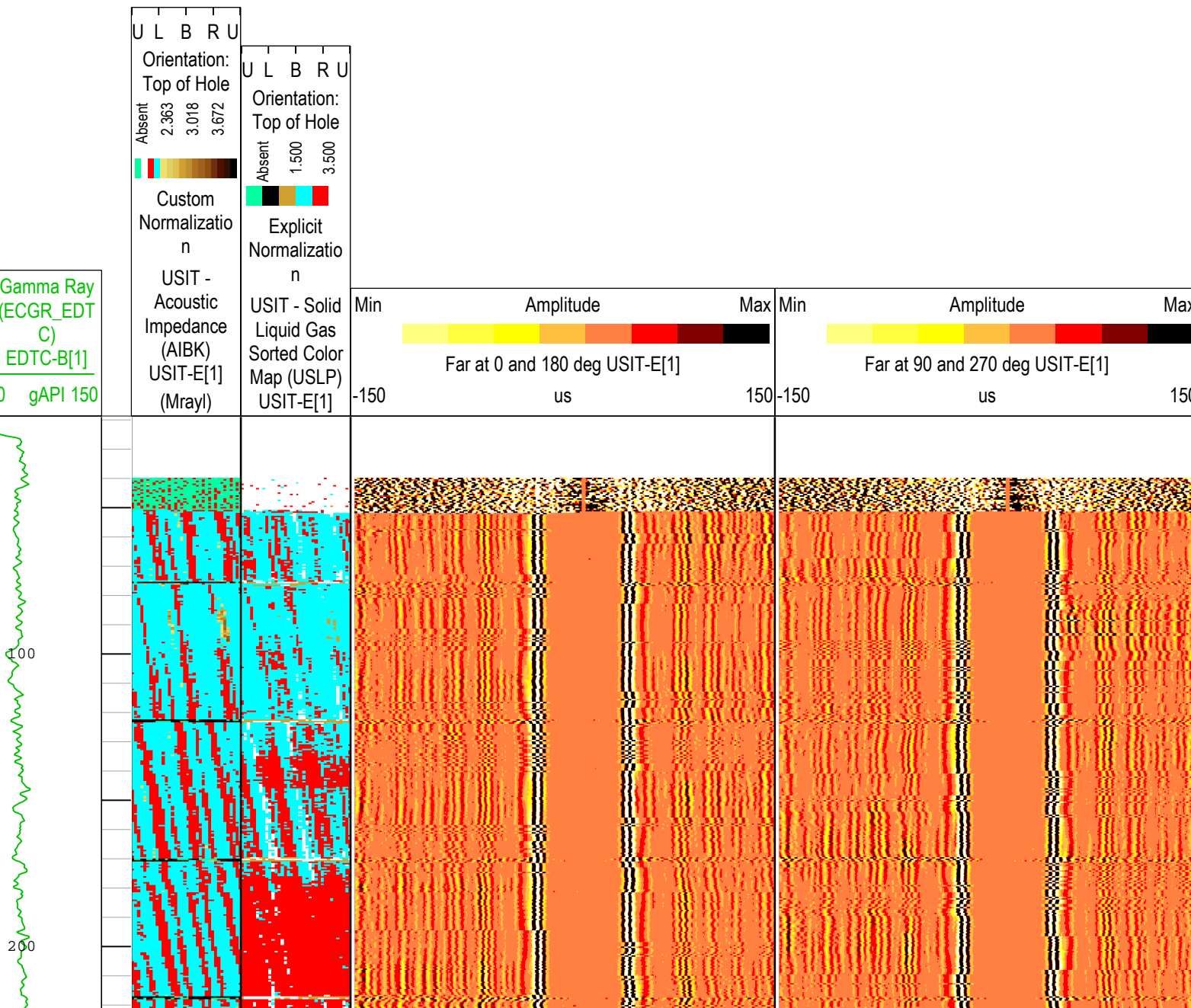
Run Name	Pass Objective	Direction	Top	Bottom	Start	Stop	DSC Mode	Depth Shift	Include Parallel Data
One	Log[5]:Up	Up	2234.28 ft	6725.93 ft	14-Oct-2018 3:34:14 PM	14-Oct-2018 4:39:34 PM	ON	5.94 ft	Yes
One	Log[6]:Up	Up	94.88 ft	2434.17 ft	14-Oct-2018 4:44:06 PM	14-Oct-2018 5:19:36 PM	ON	6.44 ft	Yes
One	Log[7]:Up	Up	40.65 ft	206.39 ft	14-Oct-2018 5:27:09 PM	14-Oct-2018 5:31:06 PM	ON	6.44 ft	Yes

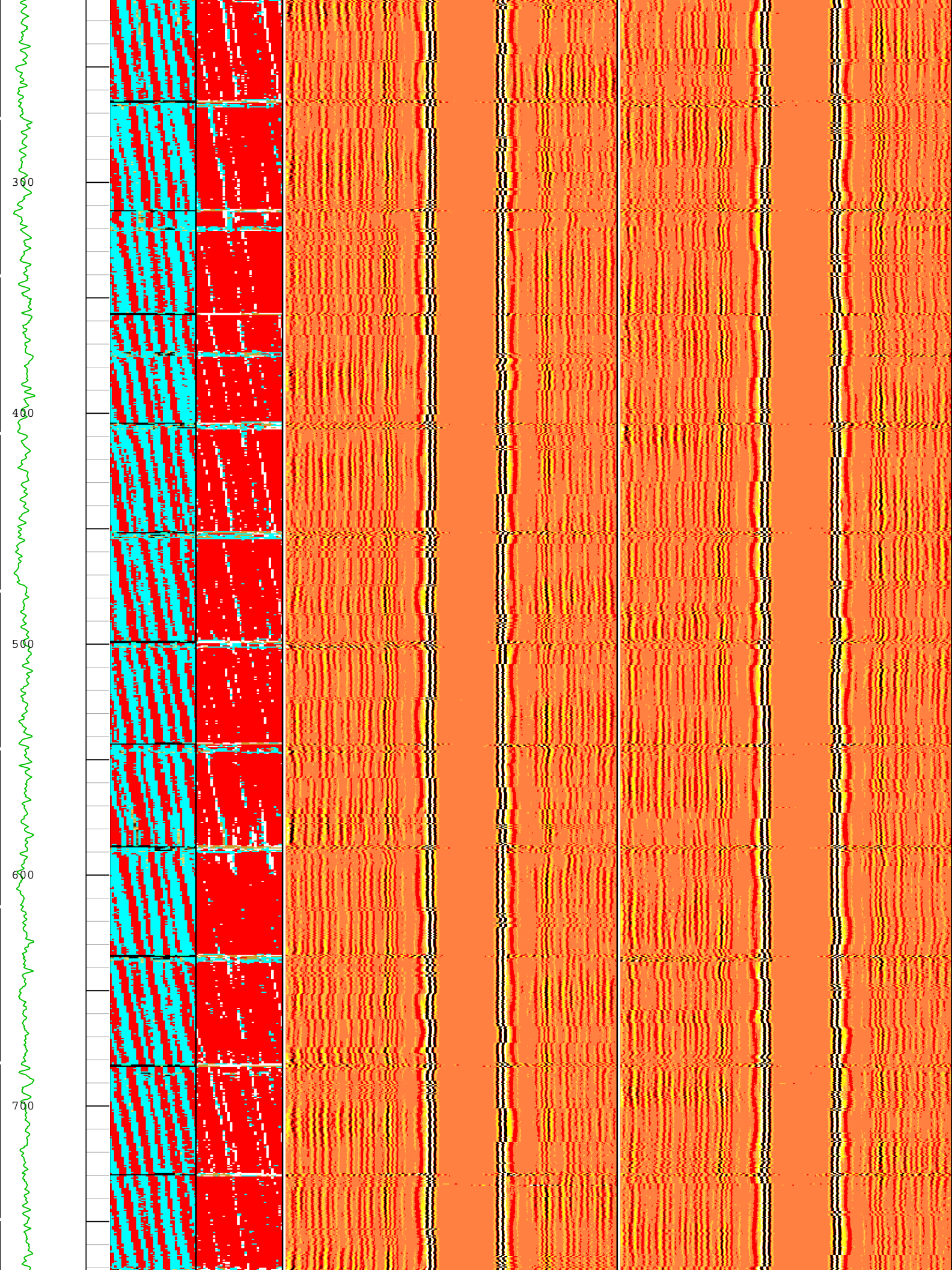
All depths are referenced to toolstring zero

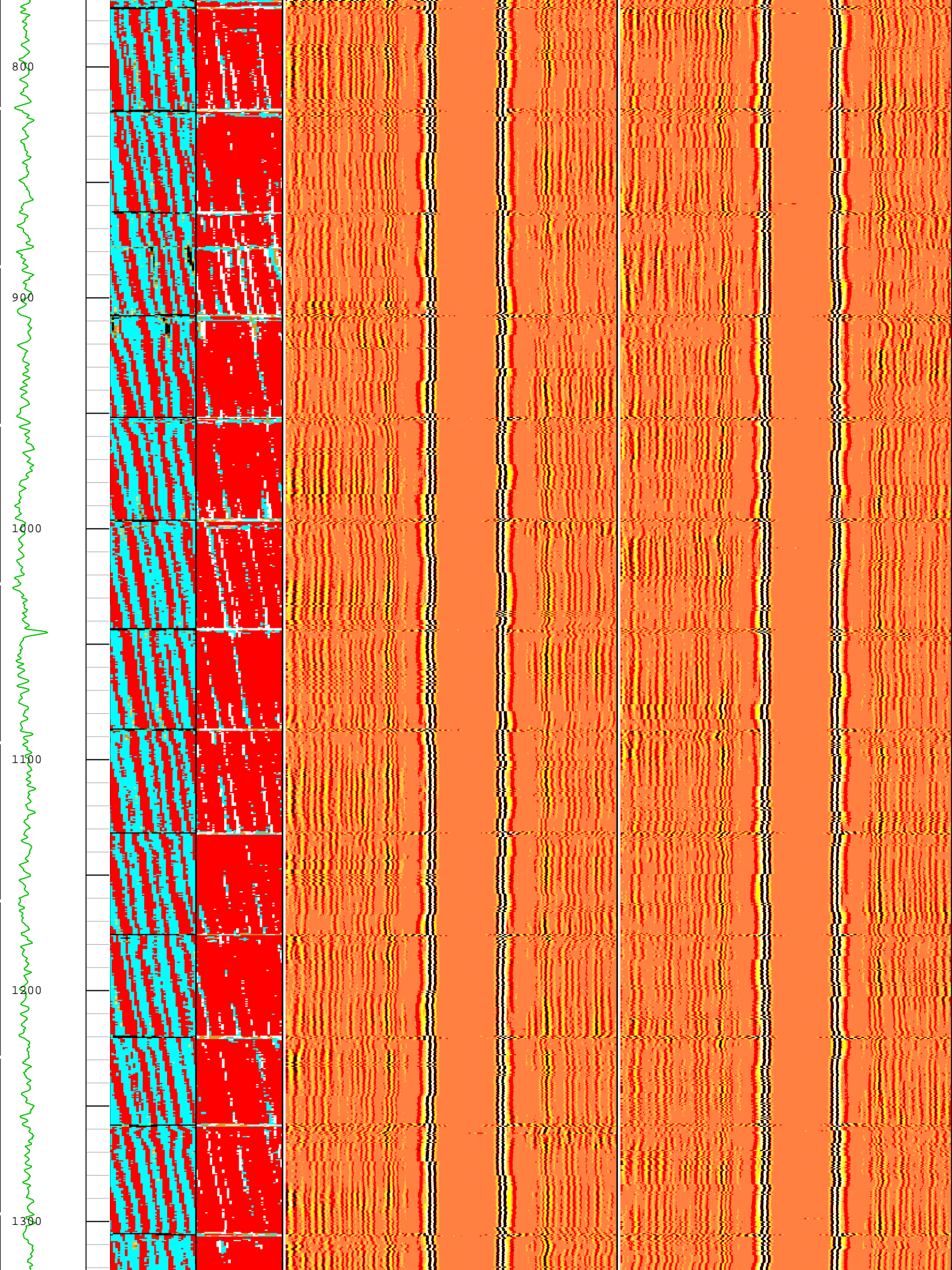
Log Company:Crestone Peak Resources Operating LLC Well:Sam #3G-25H-M166 Composite 1:S012

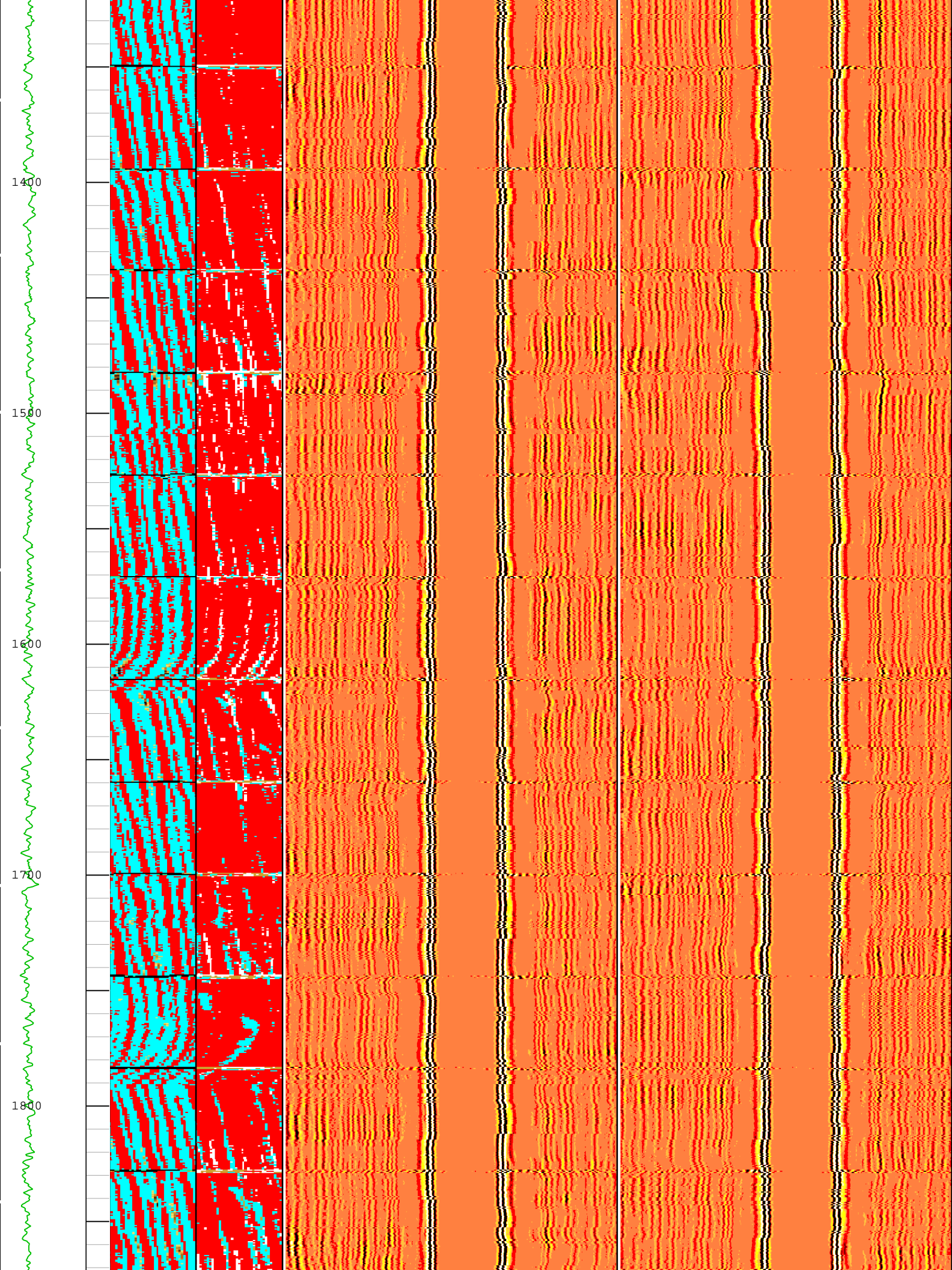
Description: USI IBC VDL WIDE Format: Log (IBC VDL WIDE) Index Scale: 2 in per 100 ft Index Unit: ft Index Type: Measured Depth Creation Date: 16-Oct-2018 16:59:00

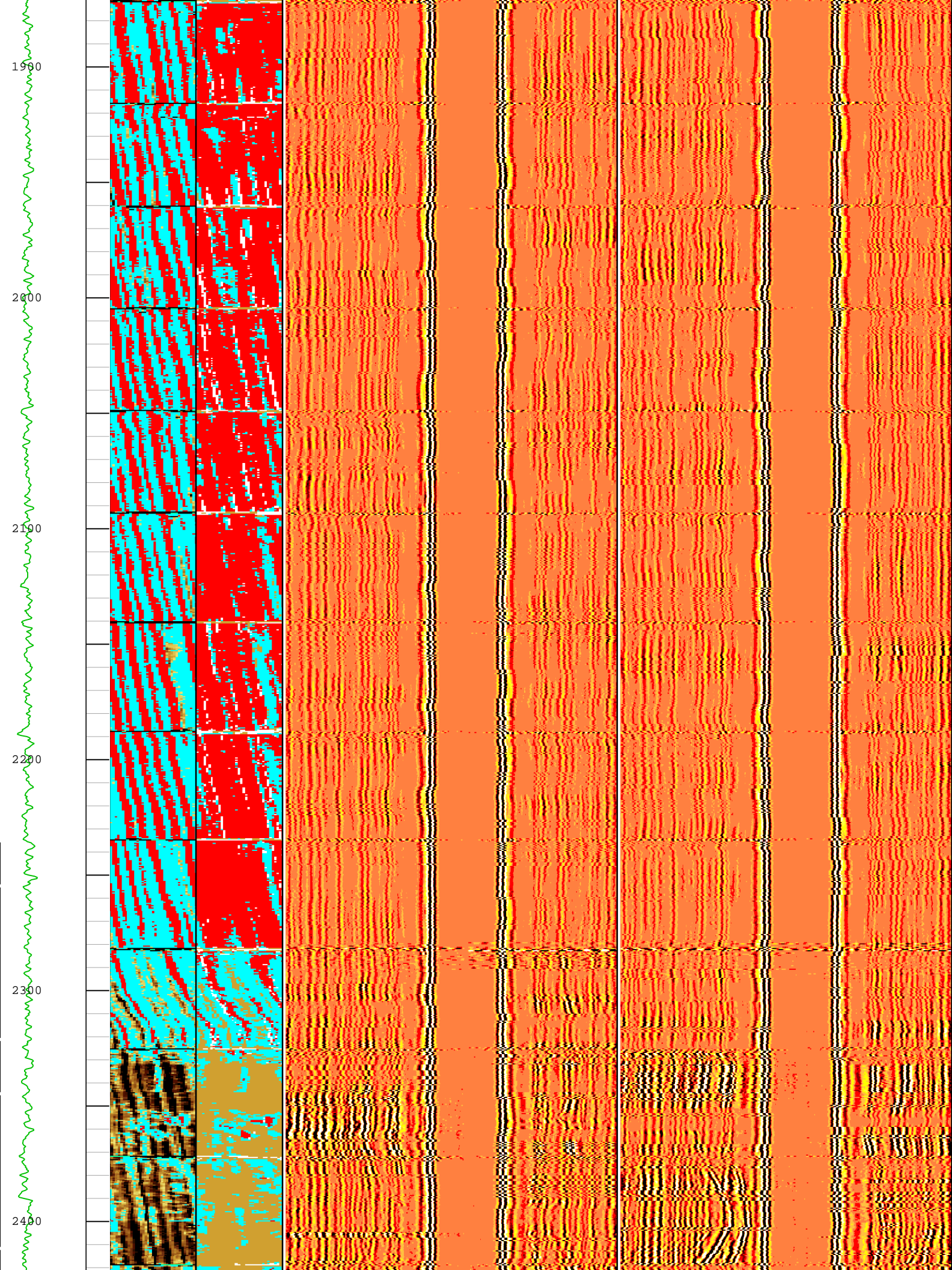
TIME_1900 - Time Marked every 60.00 (s)

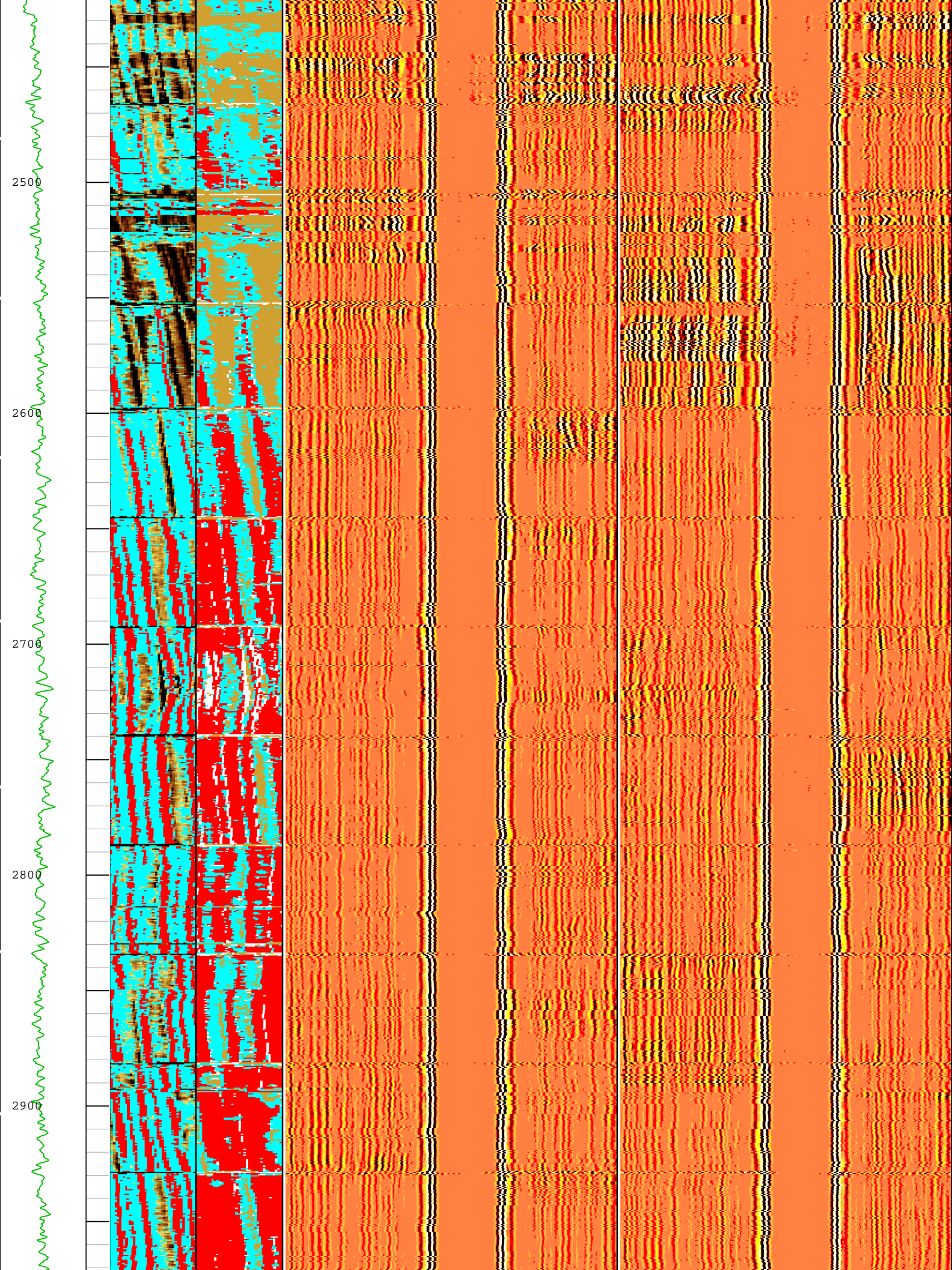


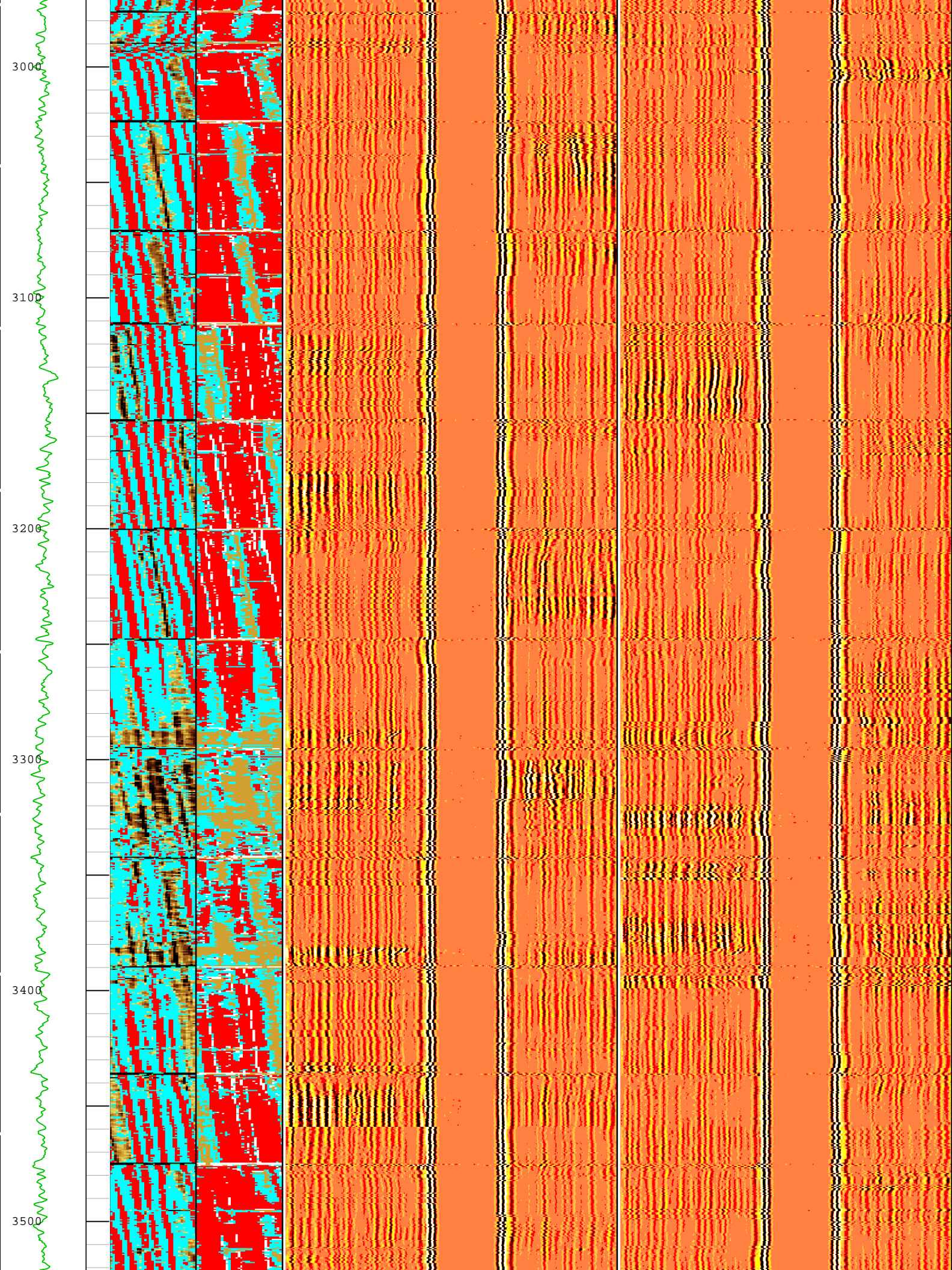


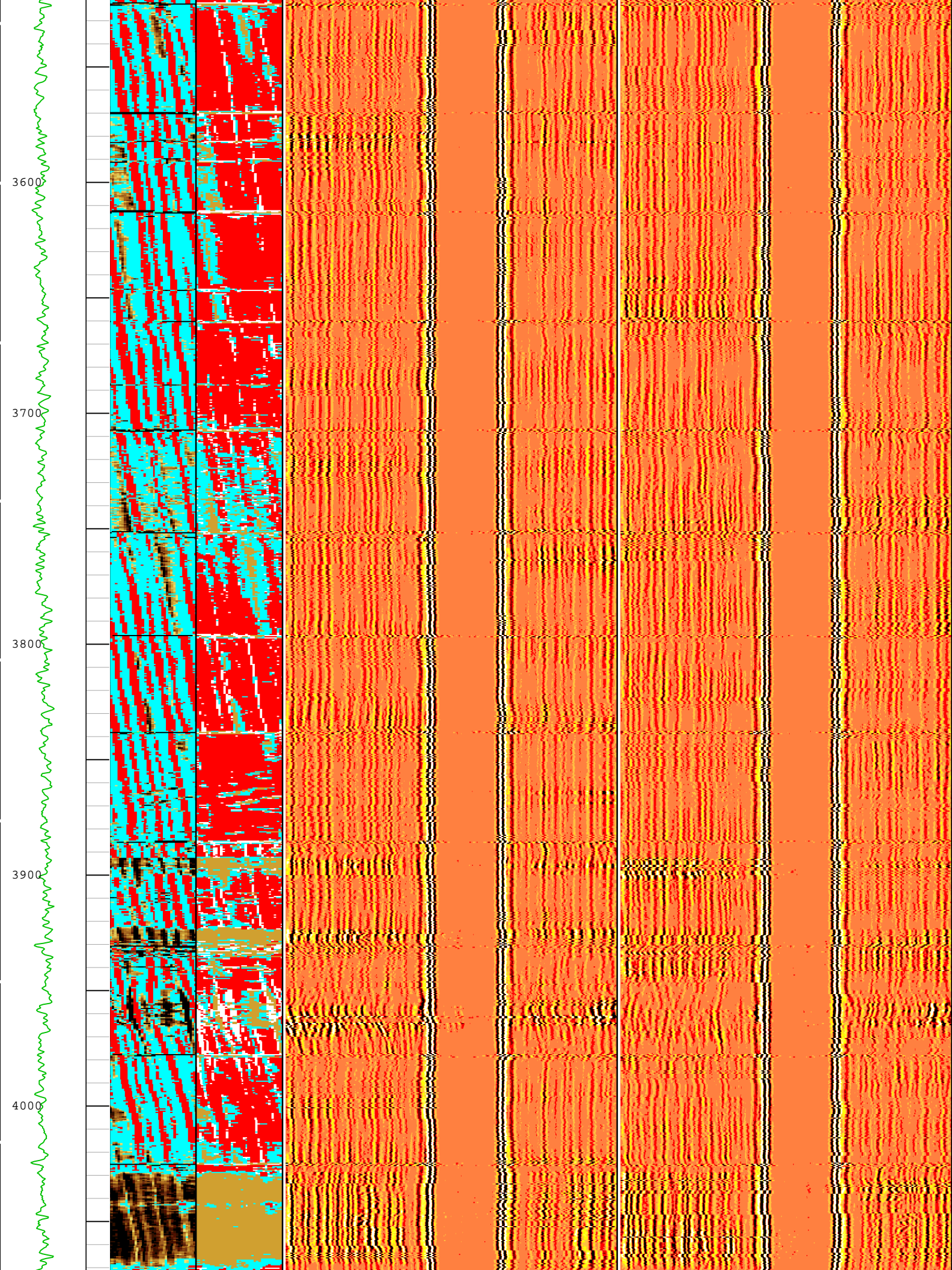


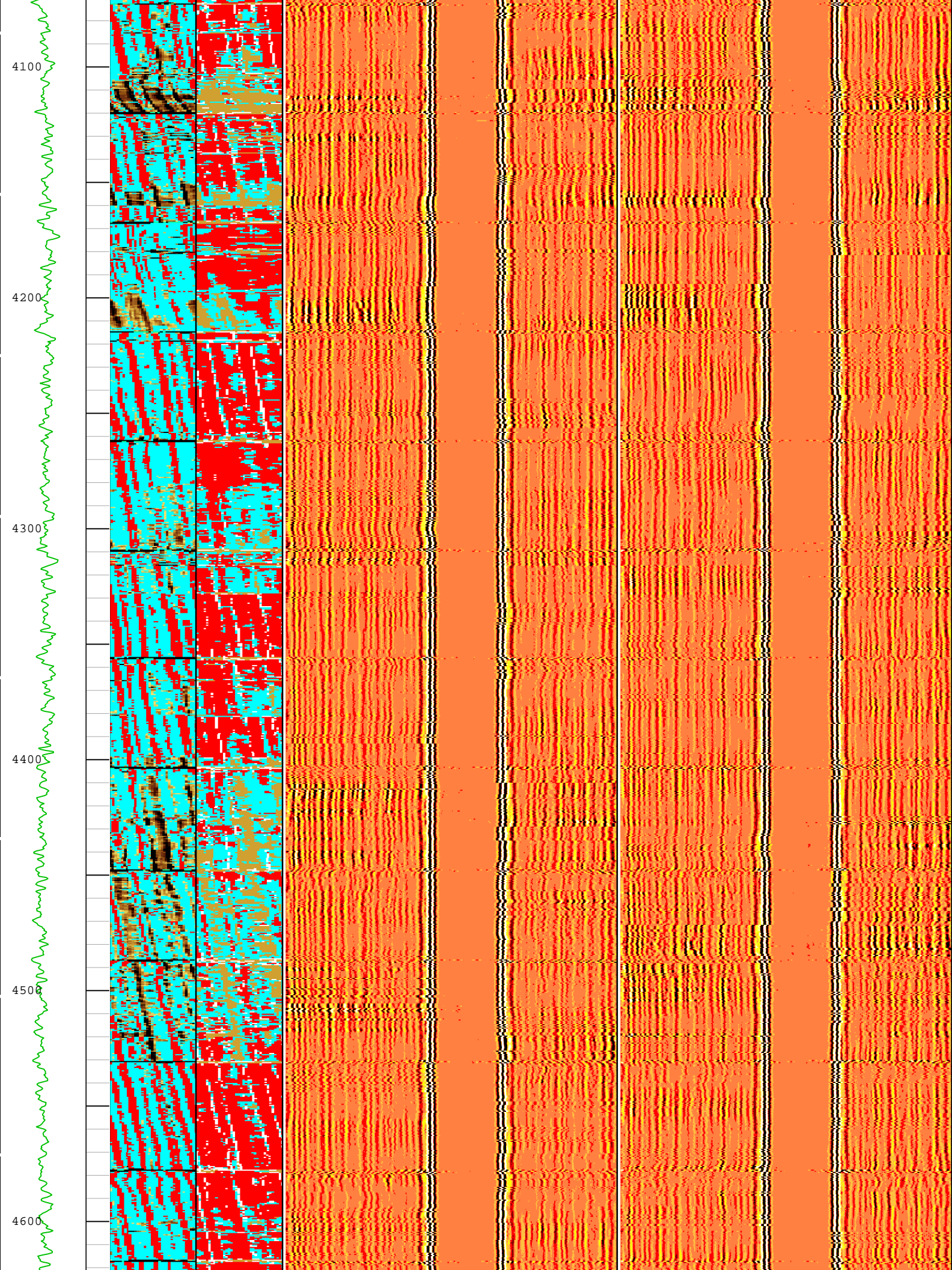


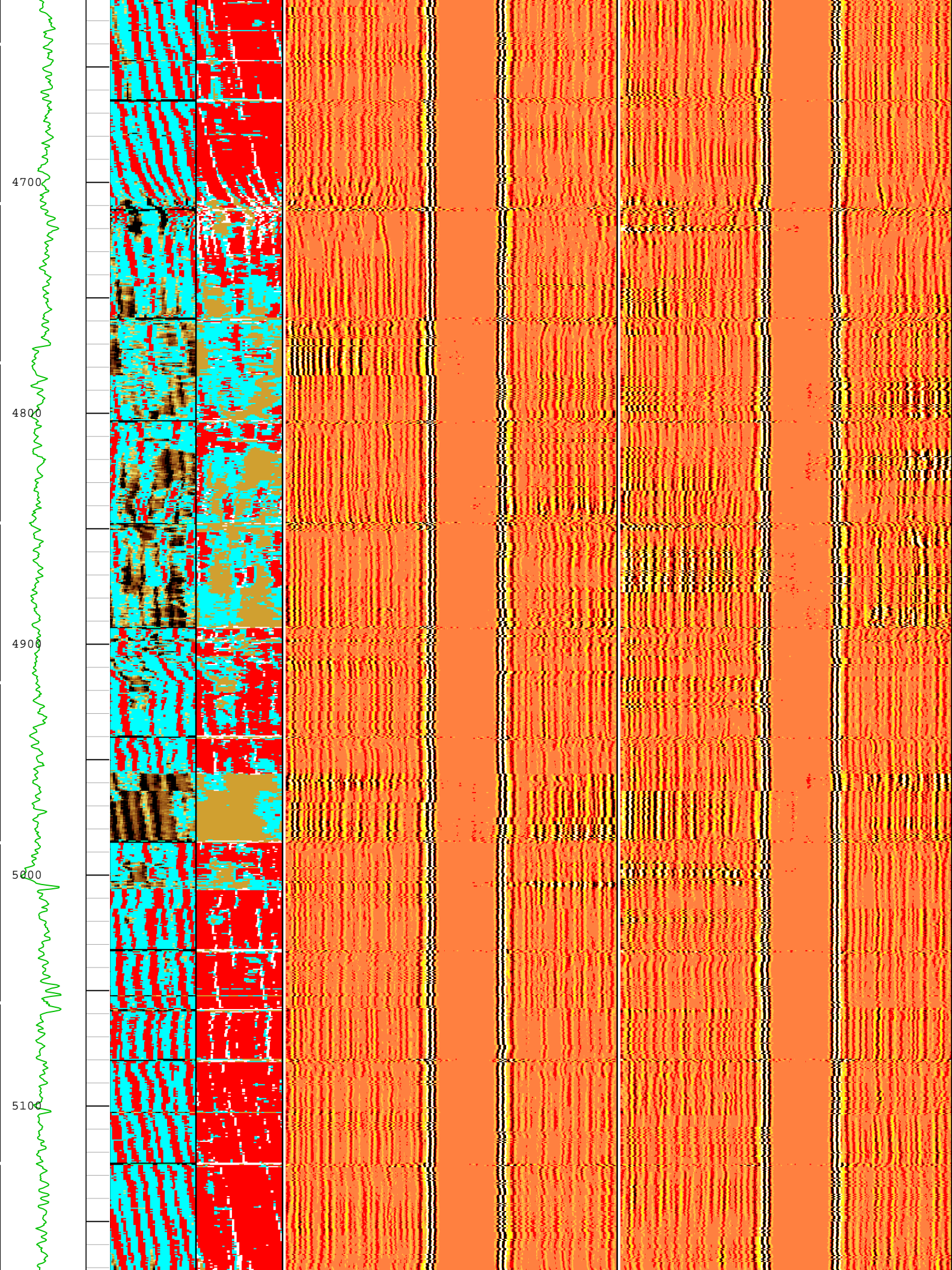


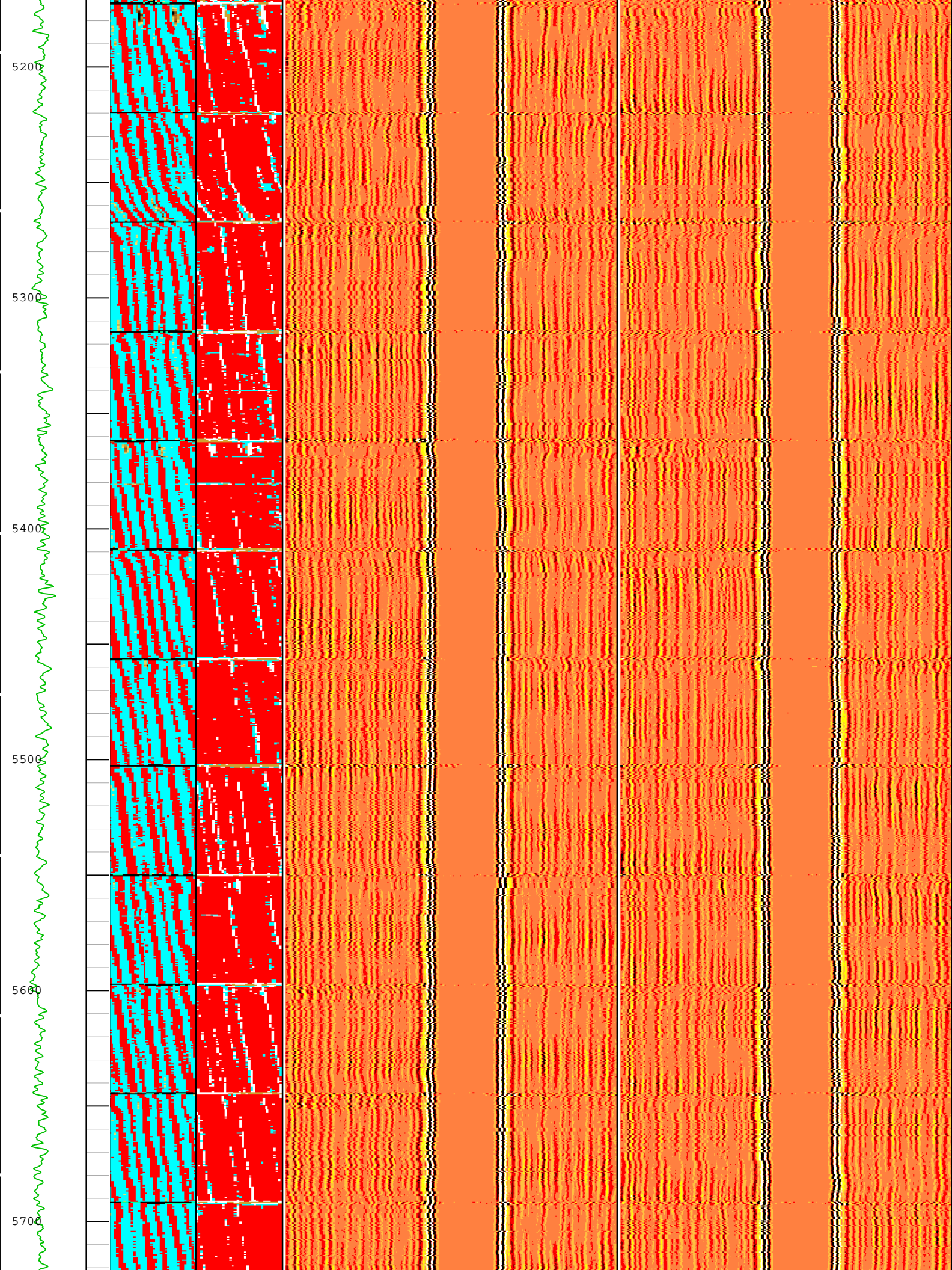


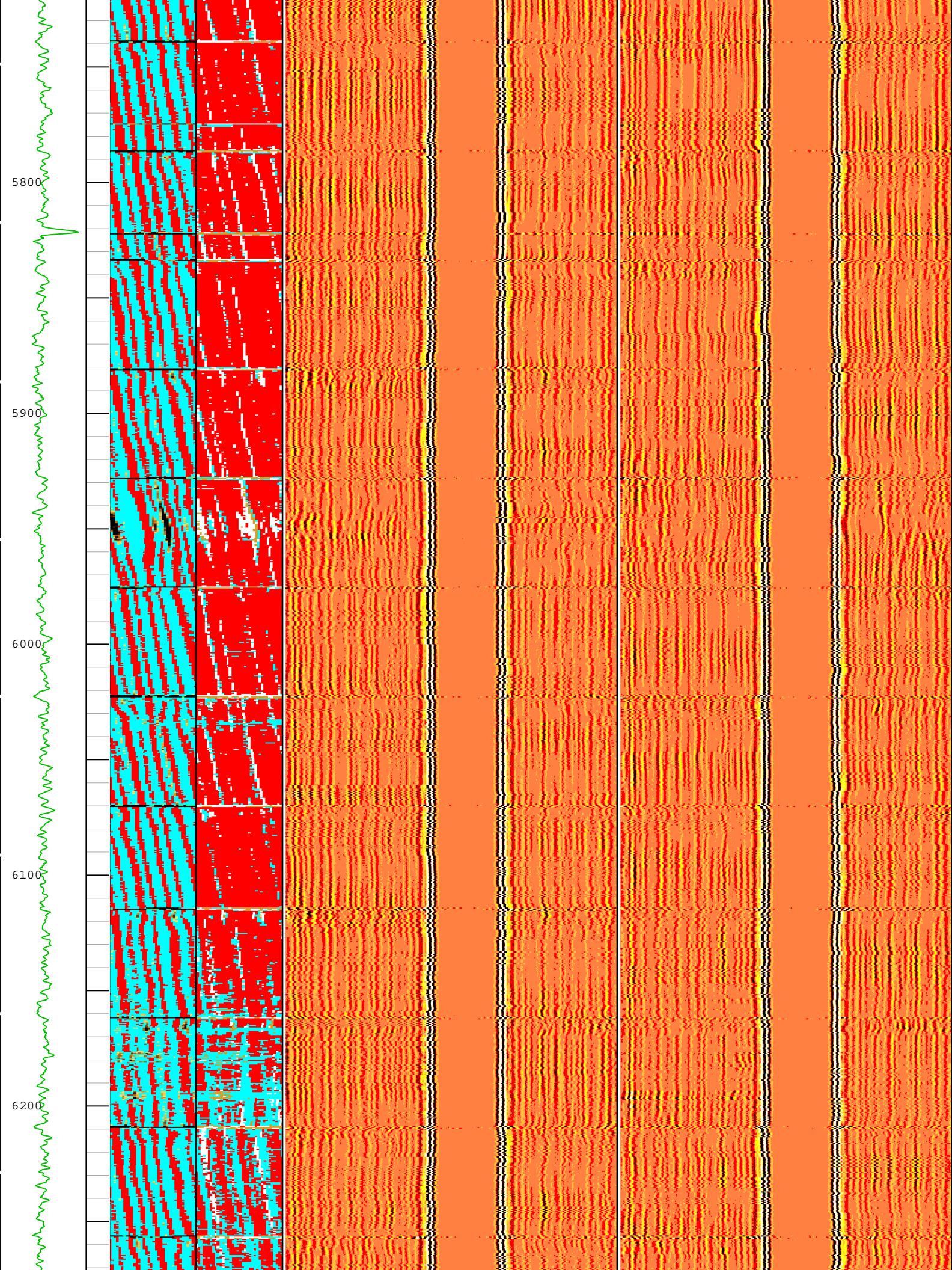


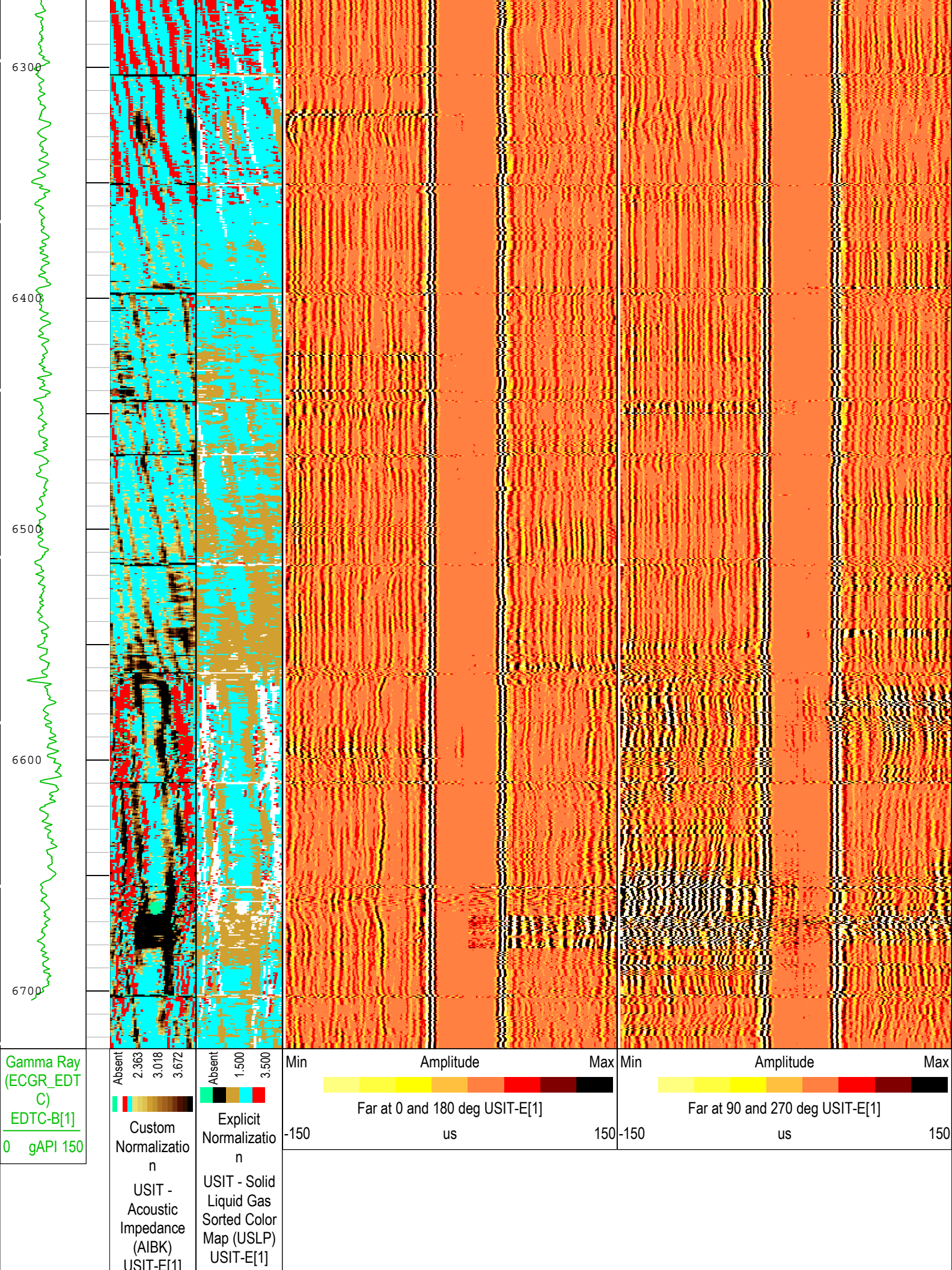












USI IBC VDL WIDE	Orientation:
(Mrayl)	Top of Hole
Orientation:	U L B R U
Top of Hole	
U L B R U	

TIME_1900 - Time Marked every 60.00 (s)

Description: USI IBC VDL WIDE Format: Log (IBC VDL WIDE) Index Scale: 2 in per 100 ft Index Unit: ft Index Type: Measured Depth Creation Date: 16-Oct-2018 16:59:00

County:	Weld
State:	Colorado
Isolation Scanner	
Cement Evaluation	
VDL Wide	