

**WELL LOCATION DATA:**  
 LATITUDE: 40.39062°N  
 LONGITUDE: 104.68251°W  
 ELEVATION: 4674'  
 PDOP: 1.9  
 OPERATOR: C HOLMES  
 SURFACE USE: INDUSTRIAL

**NOTES:**

1. DISTANCES ARE MEASURED PERPENDICULAR TO NEAREST SECTION LINE AND ARE SHOWN ON THE SAME SIDE OF THE SECTION LINE WHERE THE WELL IS LOCATED.
2. THIS MAP DOES NOT REPRESENT A MONUMENTED BOUNDARY SURVEY. SIXTEENTH CORNER LOCATIONS ARE COMPUTED, UNLESS OTHERWISE NOTED.
3. BOTTOM HOLE LOCATIONS AND HORIZONTAL COMPLETION ZONE PROVIDED BY OTHERS.

**BASIS OF BEARING:**

THE NORTH LINE OF THE NORTHEAST QUARTER OF SECTION 20-T5N-R65W BEARS N89°44'34"E BETWEEN THE NORTH QUARTER CORNER OF SECTION 20 MONUMENTED WITH 3 1/4" A.C. IN R.B STAMPED "PLS 36053" AND THE NORTHEAST CORNER OF SECTION 20 MONUMENTED WITH A 3 1/4" A.C. IN R.B STAMPED "LS 34990" BASED ON THE COLORADO NORTH 0501 STATE PLANE COORDINATE SYSTEM.

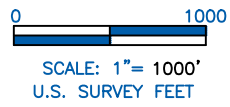
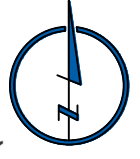
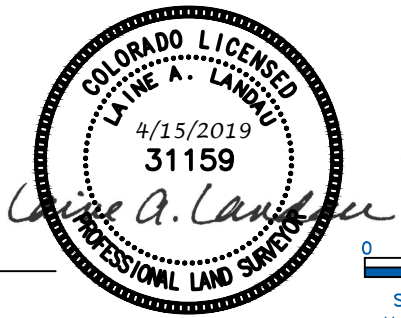
ELEVATIONS ARE BASED ON NAVD 88, AS OBSERVED FROM GPS OBSERVATIONS

**LEGEND**

- ⊙ ALIQUOT CORNER A.C. ALUMINUM CAP
- ⊕ BOTTOM HOLE R.B. RANGE BOX
- ⊙ PROPOSED WELL

**LAND SURVEYOR'S CERTIFICATION**

LAMP, RYNEARSON & ASSOCIATES, INC., OF FT. COLLINS, COLORADO HAS, IN ACCORDANCE WITH A REQUEST FROM TROY OWENS AT EXTRACTION, DETERMINED THE SURFACE LOCATION OF THE WELL DESIGNATED AS GP HILLSIDE FED 17W-20-11N TO BE 453' FROM THE NORTH LINE AND 1305' FROM THE EAST LINE OF SECTION 20, TOWNSHIP 5 NORTH, RANGE 65 WEST OF THE 6TH P.M., WELD COUNTY, COLORADO.



LAINE A. LANDAU  
 COLORADO PLS 31159  
 DATE OF SURVEY: 04/06/2018 (SECTION CONTROL)  
 DATE OF SURVEY: 7/31/2014 (WELL LOCATION)

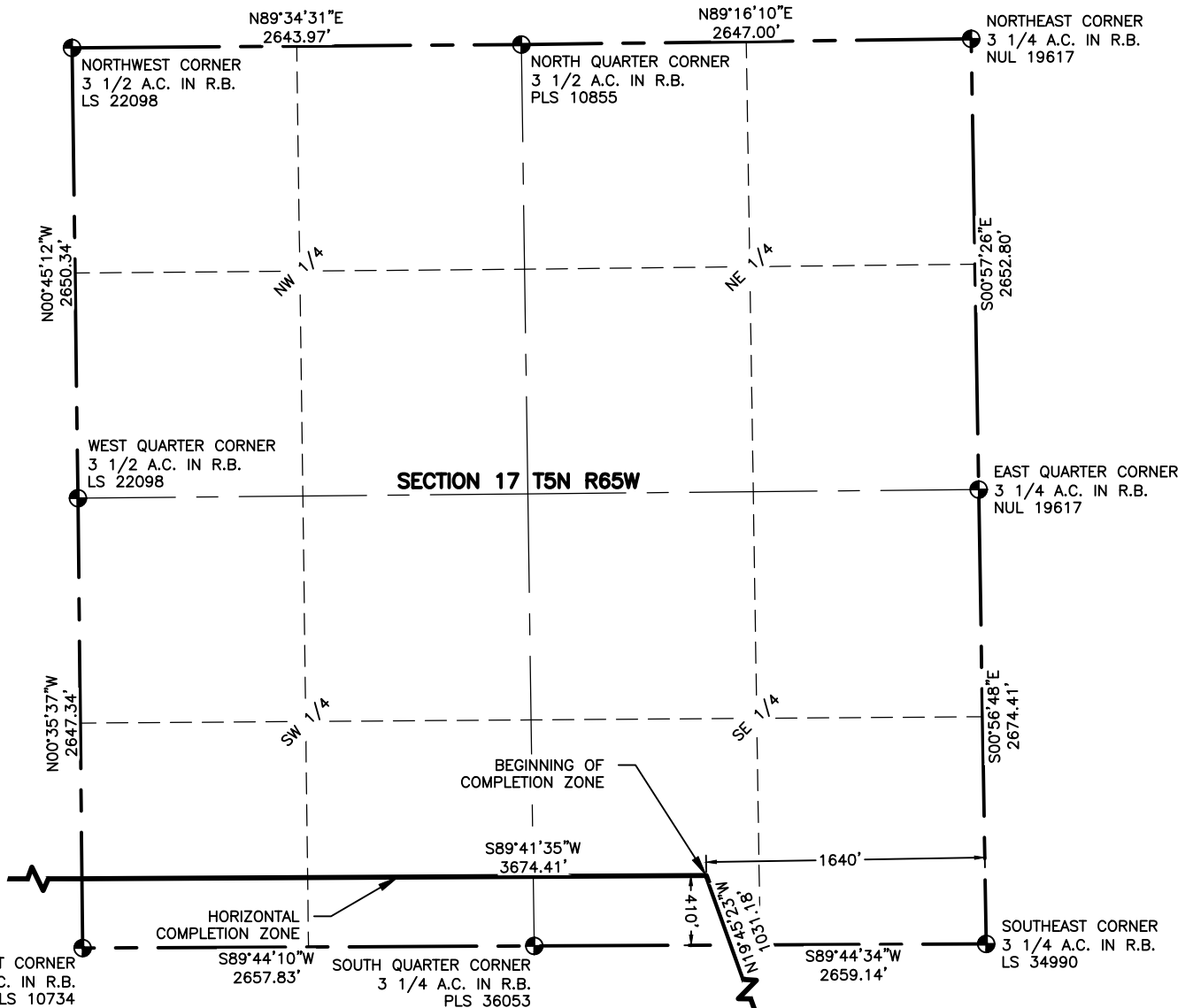


**LAMP RYNEARSON & ASSOCIATES**

4715 Innovation Drive 970.226.0342 | P  
 Fort Collins, CO 80525 970.226.0879 | F  
 www.LRA-Inc.com

PROPOSED WELL LOCATION EXHIBIT  
 GP HILLSIDE FED 17W-20-11  
 1 OF 4

<b>DRAWN BY</b> JMC	<b>DATE</b> 04/02/2019	<b>COGCC ID</b> 332837	<b>PROJECT - TASK NUMBER</b> 0213001.01	<b>BOOK AND PAGE</b> MR01/MR02	<b>SURFACE - LOCATION</b> NE/4,NE/4, SEC20, T5N, R65W
<b>PATH\FILENAME</b>	L:\engineering\0218001.01 xog - greeley directional gp				

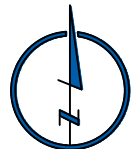


**NOTES:**

1. DISTANCES ARE MEASURED PERPENDICULAR TO NEAREST SECTION LINE AND ARE SHOWN ON THE SAME SIDE OF THE SECTION LINE WHERE THE WELL IS LOCATED.
2. THIS MAP DOES NOT REPRESENT A MONUMENTED BOUNDARY SURVEY.
3. SIXTEENTH CORNER LOCATIONS ARE COMPUTED, UNLESS OTHERWISE NOTED.

**LEGEND**

- ⊕ ALIQUOT CORNER
- ⊕(H) BOTTOM HOLE
- A.C. ALUMINUM CAP
- R.B. RANGE BOX



SCALE: 1" = 1000'  
U.S. SURVEY FEET



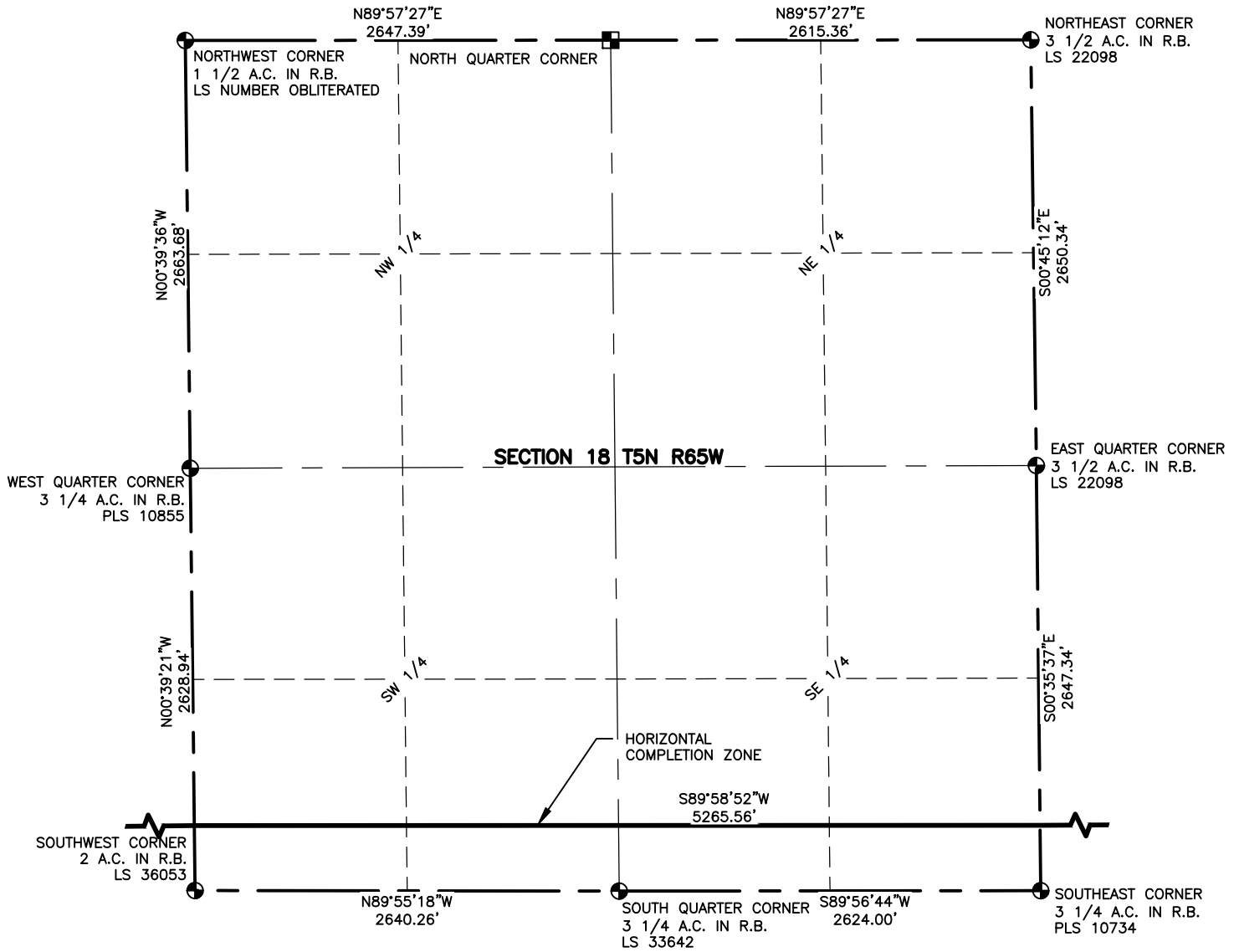
**LAMP RYNEARSON**  
& ASSOCIATES

4715 Innovation Drive 970.226.0342 | P  
Fort Collins, CO 80525 970.226.0879 | F  
www.LRA-Inc.com

PROPOSED WELL LOCATION EXHIBIT  
GP HILLSIDE FED 17W-20-11  
2 OF 4

DRAWN BY	DATE	COGCC ID	PROJECT - TASK NUMBER	BOOK AND PAGE	SURFACE - LOCATION
JMC	04/02/2019	332837	0213001.01	MR01/MR02	NE/4,NE/4, SEC20, T5N, R65W
PATH\FILENAME	I:\engineering\0218001.01 xog - greeley directional gp				

I:\SURVEY\DRAWINGS\EXHIBITS\0211012 - 04EXWRC14R.dwg



**NOTES:**

1. DISTANCES ARE MEASURED PERPENDICULAR TO NEAREST SECTION LINE AND ARE SHOWN ON THE SAME SIDE OF THE SECTION LINE WHERE THE WELL IS LOCATED.
2. THIS MAP DOES NOT REPRESENT A MONUMENTED BOUNDARY SURVEY.
3. SIXTEENTH CORNER LOCATIONS ARE COMPUTED, UNLESS OTHERWISE NOTED.

**LEGEND**

- ALIQUOT CORNER
- BOTTOM HOLE
- COMPUTED ALIQUOT CORNER FROM GLO RECORDS
- A.C. ALUMINUM CAP
- R.B. RANGE BOX



SCALE: 1" = 1000'  
U.S. SURVEY FEET

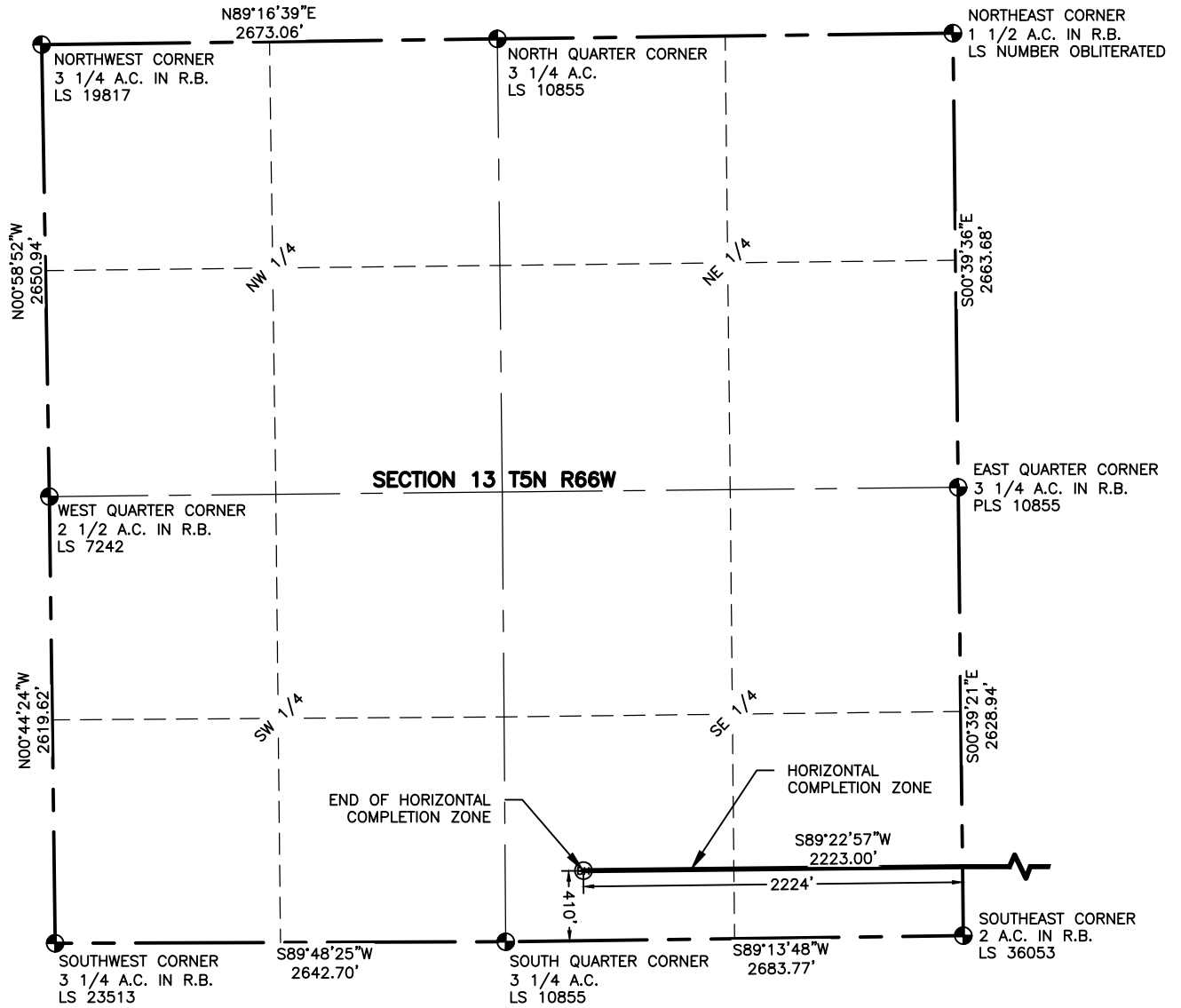


**LAMP RYNEARSON**  
& ASSOCIATES

4715 Innovation Drive 970.226.0342 | P  
Fort Collins, CO 80525 970.226.0879 | F  
www.LRA-Inc.com

PROPOSED WELL LOCATION EXHIBIT  
GP HILLSIDE FED 17W-20-11  
3 OF 4

DRAWN BY	DATE	COGCC ID	PROJECT - TASK NUMBER	BOOK AND PAGE	SURFACE - LOCATION
JMC	04/02/2019	332837	0213001.01	MR01/MR02	NE/4,NE/4, SEC20, T5N, R65W
PATH\FILENAME	I:\engineering\0218001.01 xog - greely directional gp				



**NOTES:**

1. DISTANCES ARE MEASURED PERPENDICULAR TO NEAREST SECTION LINE AND ARE SHOWN ON THE SAME SIDE OF THE SECTION LINE WHERE THE WELL IS LOCATED.
2. THIS MAP DOES NOT REPRESENT A MONUMENTED BOUNDARY SURVEY. SIXTEENTH CORNER LOCATIONS ARE COMPUTED, UNLESS OTHERWISE NOTED.
3. BOTTOM HOLE LOCATIONS AND HORIZONTAL COMPLETION ZONE PROVIDED BY OTHERS.

**LEGEND**

- ⊕ ALIQUOT CORNER
- ⊙ BOTTOM HOLE
- A.C. ALUMINUM CAP
- R.B. RANGE BOX



SCALE: 1"= 1000'  
U.S. SURVEY FEET



4715 Innovation Drive 970.226.0342 | P  
Fort Collins, CO 80525 970.226.0879 | F  
www.LRA-Inc.com

PROPOSED WELL LOCATION EXHIBIT  
GP HILLSIDE FED 17W-20-11  
4 OF 4

DRAWN BY	DATE	COGCC ID	PROJECT - TASK NUMBER	BOOK AND PAGE	SURFACE - LOCATION
JMC	04/02/2019	332837	0213001.01	MR01/MR02	NE/4,NE/4, SEC20, T5N, R65W
PATH\FILENAME	I:\engineering\0218001.01 xog - greely directional gp				