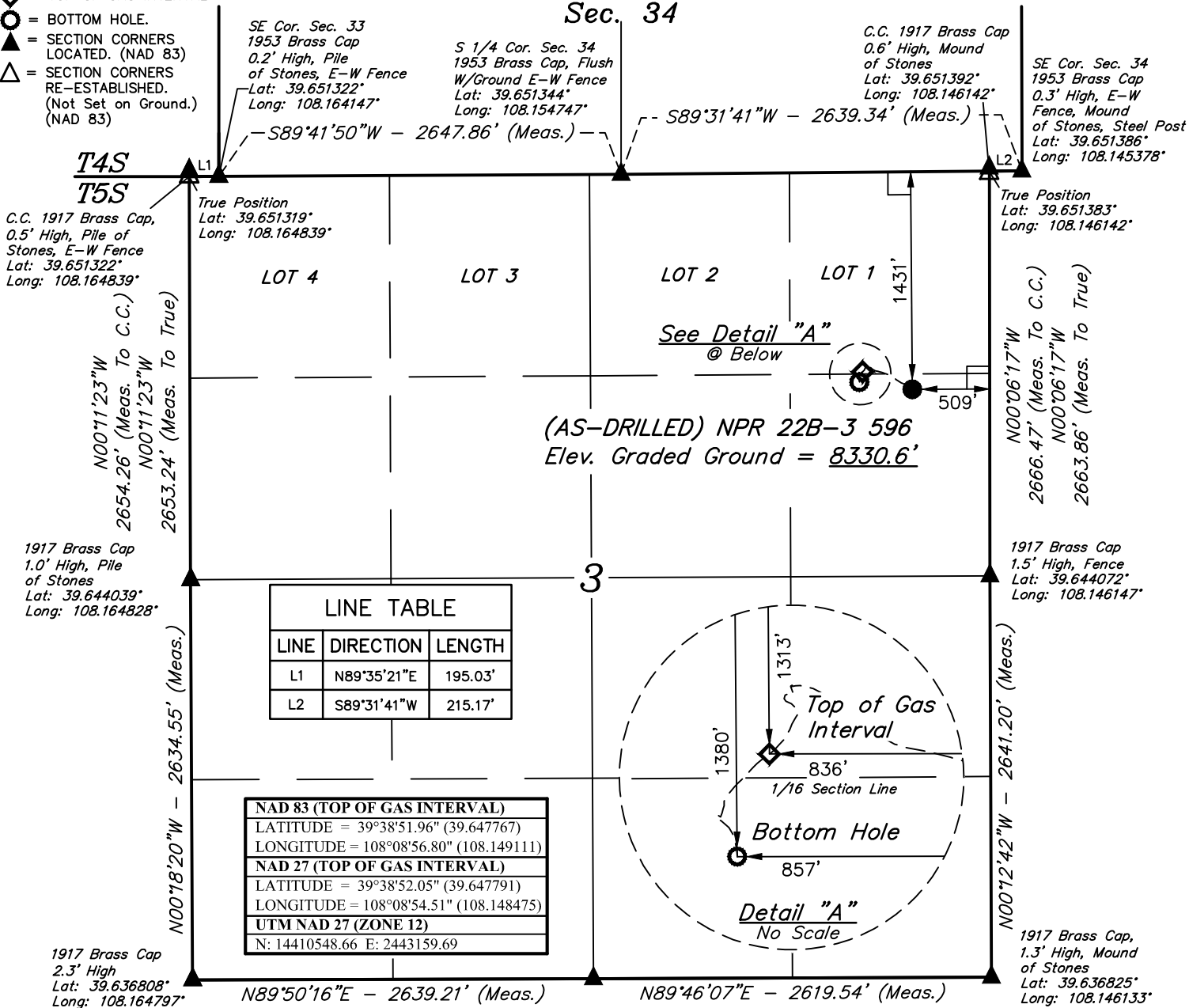


T5S, R96W, 6th P.M.

LEGEND:

- = 90° SYMBOL
- = AS-DRILLED WELLHEAD.
- ◆ = TOP OF GAS INTERVAL
- = BOTTOM HOLE.
- ▲ = SECTION CORNERS LOCATED. (NAD 83)
- △ = SECTION CORNERS RE-ESTABLISHED. (Not Set on Ground.) (NAD 83)

Sec. 34



| LINE TABLE | | |
|------------|-------------|---------|
| LINE | DIRECTION | LENGTH |
| L1 | N89°35'21"E | 195.03' |
| L2 | S89°31'41"W | 215.17' |

| NAD 83 (TOP OF GAS INTERVAL) | |
|------------------------------|---------------|
| LATITUDE = 39°38'51.96" | (39.647767) |
| LONGITUDE = 108°08'56.80" | (108.149111) |
| NAD 27 (TOP OF GAS INTERVAL) | |
| LATITUDE = 39°38'52.05" | (39.647791) |
| LONGITUDE = 108°08'54.51" | (108.148475) |
| UTM NAD 27 (ZONE 12) | |
| N: 14410548.66 | E: 2443159.69 |

PDOP = 1.2



| NAD 83 (AS-DRILLED LOCATION) | NAD 83 (BOTTOM HOLE) |
|--|--|
| LATITUDE = 39°38'50.82" (39.647449) | LATITUDE = 39°38'51.29" (39.647582) |
| LONGITUDE = 108°08'52.62" (108.147950) | LONGITUDE = 108°08'57.07" (108.149187) |
| NAD 27 (AS-DRILLED LOCATION) | NAD 27 (BOTTOM HOLE) |
| LATITUDE = 39°38'50.90" (39.647473) | LATITUDE = 39°38'51.38" (39.647606) |
| LONGITUDE = 108°08'50.33" (108.147314) | LONGITUDE = 108°08'54.78" (108.148551) |
| UTM NAD 27 (ZONE 12) | UTM NAD 27 (ZONE 12) |
| N: 14410443.32 E: 2443490.36 | N: 14410480.61 E: 2443140.48 |

CERTIFICATE OF SURVEY

THIS IS TO CERTIFY THAT THE ABOVE PLAT WAS PREPARED AND THE LOCATION AS SHOWN WAS STAKED ON THE GROUND FROM FIELD NOTES OF ACTUAL SURVEYS MADE BY ME OR UNDER MY SUPERVISION AND THAT THE SAME ARE TRUE AND CORRECT TO THE BEST OF MY KNOWLEDGE AND BELIEF.

Handwritten Signature

REGISTERED LAND SURVEYOR
REGISTRATION NO. 180
STATE OF COLORADO 04-24-19

BASIS OF BEARINGS
BASIS OF BEARINGS IS A G.P.S. OBSERVATION

BASIS OF ELEVATION
BENCH MARK (H79) LOCATED IN THE NE 1/4 OF SECTION 35, T4S, R98W, 6th P.M., TAKEN FROM THE BULL FORK, QUADRANGLE, COLORADO, 7.5 MINUTE SERIES (TOPOGRAPHIC MAP) PUBLISHED BY THE UNITED STATES DEPARTMENT OF THE INTERIOR, GEOLOGICAL SURVEY. SAID ELEVATION IS MARKED AS BEING 8535 FEET.



Caerus Oil & Gas LLC

(AS-DRILLED) NPR 22B-3 596
SE 1/4 NE 1/4, SECTION 3, T5S, R96W, 6th P.M.
GARFIELD COUNTY, COLORADO

| | | | |
|-------------|---------------------|----------|------------|
| SURVEYED BY | JOEL LEFEVERE, D.P. | 04-16-19 | SCALE |
| DRAWN BY | M.D. | 04-23-19 | 1" = 1000' |

AS-DRILLED WELL LOCATION PLAT



UELS, LLC
Corporate Office * 85 South 200 East
Vernal, UT 84078 * (435) 789-1017