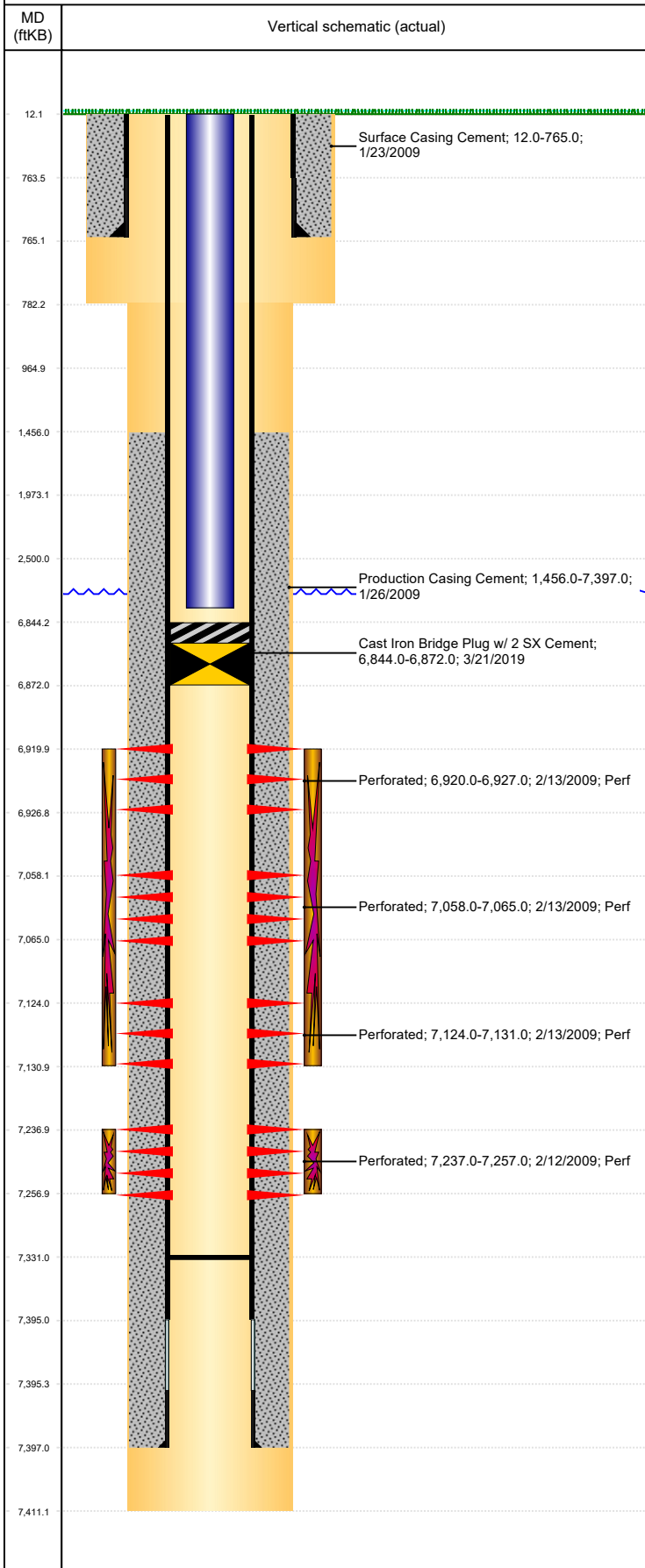


**Well Name: DETIENNE 17-12**

DEVIATED, ORIGINAL HOLE, 5/6/2019 3:15:42 PM



Well Header									
API 05-123-25532		Business Unit DJ BASIN			District 15		Well Config DEVIATED		
KB - GL / MSL (ft... 12.00		Spud Date 1/22/2009		P & A Date		Well Production Status TA			SoRT No
Comment									
Surface Location (Congressional)									
Qtr 3 SE	Qtr 4 NE	Section 12	Twنشp 5	Twنشp... N	Range 67	Rng E/... W	Actual Latitude (°) 40.41607110	Actual Longitude (°) -104.83461740	
Wellbore Sections									
Section Des			Size (in)			Act Top, MD (ftKB)		Act Btm, MD (ftKB)	
SURFACE			12 1/4			12		782	
PRODUCTION			7 7/8			782		7,411	
Casing Strings									
Csg Des			Run Date		OD (in)	Wt/Len (lb/ft)	Grade	Top, MD (ftKB)	MD (ftKB)
Surface			1/23/2009		8 5/8	24.00	J-55	12.0	765.0
Production			1/26/2009		4 1/2	11.60	I-80	12.0	7,397.0
Cement									
Des					Start Date		Top (ftKB)		Btm (ftKB)
Surface Casing Cement					1/23/2009		12.0		765.0
Production Casing Cement					1/26/2009		1,456.0		7,397.0
Zone Statuses									
Zone Name	Status Date	Status	Fluid Type		Job				Prod Method
NIOBRARA	8/26/2009	PR			DRILLING/COMPLETION - ORIGINAL, 1/22/2009...				
NIOBRARA	3/21/2019	TA			HORIZONTAL WELL PREP, 3/18/2019 13:00				
CODELL	8/26/2009	PR			DRILLING/COMPLETION - ORIGINAL, 1/22/2009...				
CODELL	3/21/2019	TA			HORIZONTAL WELL PREP, 3/18/2019 13:00				
Perforation Data									
Linked Zone		Bnch/Stg	Entered Shot Total		Top (ftKB)		Btm (ftKB)		Date
NIOBRARA, ORIGINAL HOLE		A	21		6,920.00		6,927.00		2/13/2009
NIOBRARA, ORIGINAL HOLE		B	21		7,058.00		7,065.00		2/13/2009
NIOBRARA, ORIGINAL HOLE		C	21		7,124.00		7,131.00		2/13/2009
CODELL, ORIGINAL HOLE			60		7,237.00		7,257.00		2/12/2009
Stimulation Intervals									
Zone			Start Date			Top (ftKB)		Btm (ftKB)	
NIOBRARA, ORIGINAL HOLE			2/13/2009			6,920.0		7,131.0	
CODELL, ORIGINAL HOLE			2/13/2009			7,237.0		7,257.0	
Other In Hole									
Run Date		Des				OD (in)	Top (ftKB)		Btm (ftKB)
3/21/2019		Cast Iron Bridge Plug w/ 2 SX Cement				3.99	6,844.0		6,872.0
Logs									
Date		Type				Top, MD (ftKB)		Btm, MD (ftKB)	
2/12/2008		CBL/CCL/GR				1,200.0		7,362.0	
Plug Back Total Depths									
Date		Type		Com					Depth (ftKB)
2/12/2008		FILL		DEPTH LOGGER					7,364.0
1/25/2010		FILL		TAG TO LAND TBG					7,331.0