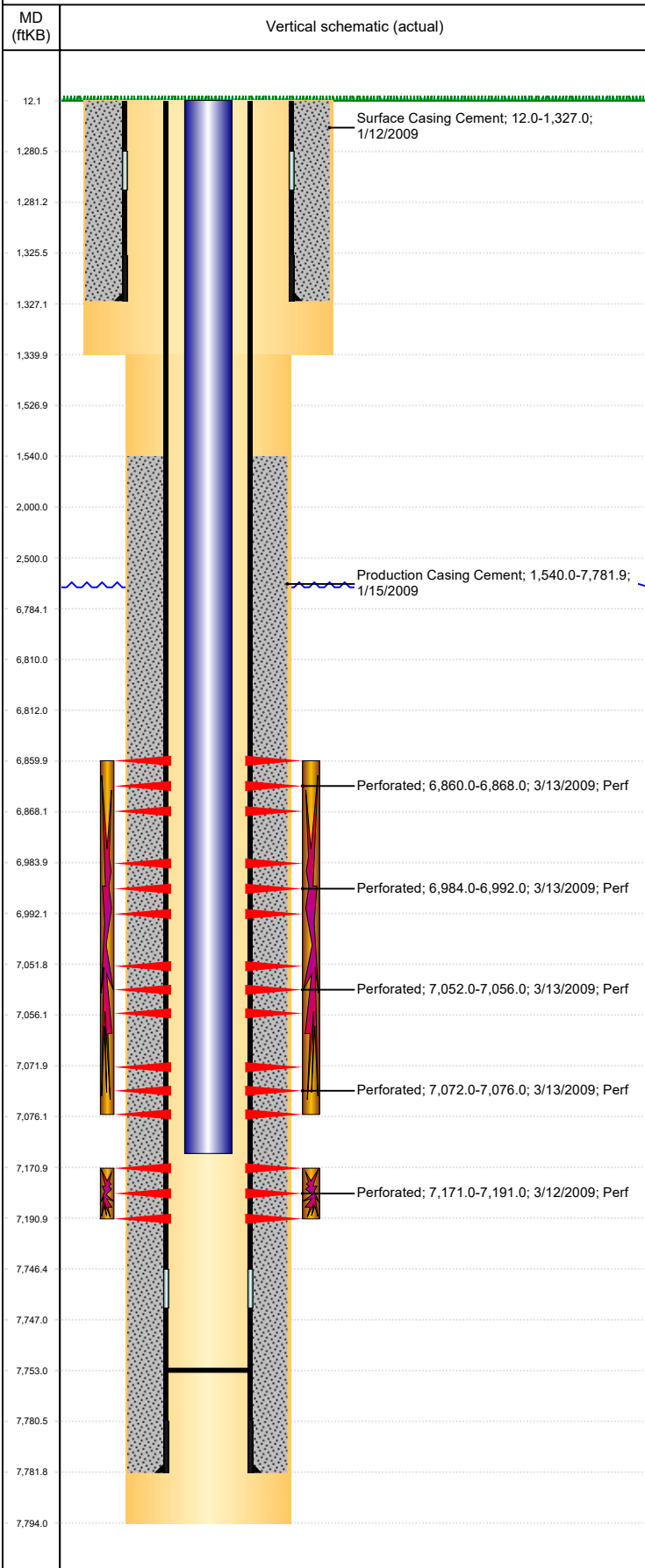


Well Name: SKYWAY 4-11

VERTICAL, ORIGINAL HOLE, 5/6/2019 2:18:02 PM



Well Header

API 05-123-26484	Business Unit DJ BASIN	District 15	Well Config VERTICAL
KB - GL / MSL (ft... 12.00	Spud Date 1/11/2009	P & A Date	Well Production Status PR
SoRT No			

Comment

Surface Location (Congressional)

Qtr 3 NW	Qtr 4 NW	Section 11	Twncshp 5	Twncsh... N	Range 67	Rng E... W	Actual Latitude (°) 40.41998950	Actual Longitude (°) -104.86770400
-------------	-------------	---------------	--------------	----------------	-------------	---------------	------------------------------------	---------------------------------------

Wellbore Sections

Section Des	Size (in)	Act Top, MD (ftKB)	Act Btm, MD (ftKB)
SURFACE	12 1/4	12	1,340
PRODUCTION	7 7/8	1340	7,794

Casing Strings

Csg Des	Run Date	OD (in)	Wt/Len (lb/ft)	Grade	Top, MD (ftKB)	MD (ftKB)
Surface	1/12/2009	8 5/8	24.00	J-55	12.0	1,327.0
Production	1/15/2009	4 1/2	11.60	I-80	12.0	7,781.9

Cement

Des	Start Date	Top (ftKB)	Btm (ftKB)
Surface Casing Cement	1/12/2009	12.0	1,327.0
Production Casing Cement	1/15/2009	1,540.0	7,781.9

Zone Statuses

Zone Name	Status Date	Status	Fluid Type	Job	Prod Method
NIOBRARA	5/9/2017	SI		DRILLING/COMPLETION - ORIGINAL, 1/11/2009...	Flowing
NIOBRARA	6/29/2017	PR			
CODELL	7/15/2009	PR			
CODELL	11/27/2013	PR	Water		

Perforation Data

Linked Zone	Bnch/Stg	Entered Shot Total	Top (ftKB)	Btm (ftKB)	Date
NIOBRARA, ORIGINAL HOLE	A	16	6,860.00	6,868.00	3/13/2009
NIOBRARA, ORIGINAL HOLE	B	16	6,984.00	6,992.00	3/13/2009
NIOBRARA, ORIGINAL HOLE	C	12	7,052.00	7,056.00	3/13/2009
NIOBRARA, ORIGINAL HOLE	C	12	7,072.00	7,076.00	3/13/2009
CODELL, ORIGINAL HOLE		60	7,171.00	7,191.00	3/12/2009

Stimulation Intervals

Zone	Start Date	Top (ftKB)	Btm (ftKB)
NIOBRARA, ORIGINAL HOLE	3/13/2009	6,860.0	7,076.0
CODELL, ORIGINAL HOLE	3/13/2009	7,171.0	7,191.0

Other In Hole

Run Date	Des	OD (in)	Top (ftKB)	Btm (ftKB)

Logs

Date	Type	Top, MD (ftKB)	Btm, MD (ftKB)
1/15/2009	COMPENSATED NEUTRON	1,326.0	7,802.0
1/15/2009	GAMMA RAY	1,326.0	7,802.0
1/15/2009	INDUCTION	1,326.0	7,786.0
3/5/2009	CBL/CCL/GR	1,300.0	7,740.0
5/4/2018	GYRO	12.0	7,100.0

Plug Back Total Depths

Date	Type	Com	Depth (ftKB)
3/5/2009	FILL	DEPTH LOGGER ON CBL	7,743.0
5/21/2009	PLUG REMNANTS	DRILL PLUGS AND TAG BOTTOM @ 7753'	7,753.0