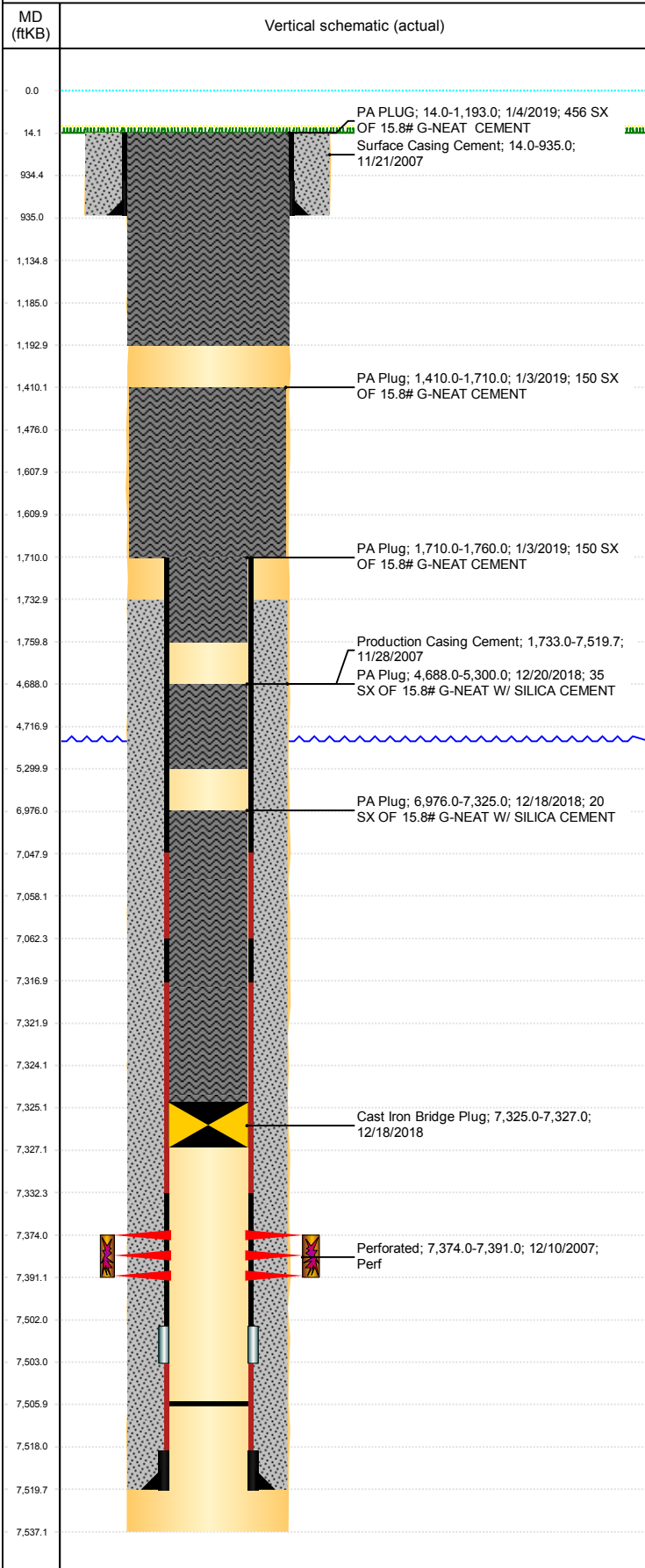


Well Name: KAMMERZELL J29-19

VERTICAL, ORIGINAL HOLE, 4/30/2019 10:43:25 AM



Well Header									
API 05-123-26537		Business Unit DJ BASIN			District 15		Well Config VERTICAL		
KB - GL / MSL (ft... 14.00		Spud Date 11/20/2007		P & A Date 1/29/2019		Well Production Status PA		SoRT Yes	
Comment									
Surface Location (Congressional)									
Qtr 3 NE	Qtr 4 NW	Section 29	Twncshp 5	Twncsh... N	Range 66	Rng E... W	Actual Latitude (°) 40.37413101	Actual Longitude (°) -104.80789563	
Wellbore Sections									
Section Des		Size (in)		Act Top, MD (ftKB)		Act Btm, MD (ftKB)			
Surface		12 1/4		14		935			
Production		7 7/8		935		7,537			
Casing Strings									
Csg Des		Run Date		OD (in)	Wt/Len (lb/ft)	Grade	Top, MD (ftKB)	MD (ftKB)	
Surface		11/21/2007		8 5/8	24.00	J-55	0.0	935.0	
Production		11/28/2007		4 1/2	11.60	M-80	0.1	7,519.7	
Cement									
Des			Start Date		Top (ftKB)		Btm (ftKB)		
Surface Casing Cement			11/21/2007		14.0		935.0		
Production Casing Cement			11/28/2007		1,733.0		7,519.7		
PA Plug			12/18/2018		6,976.0		7,325.0		
PA Plug			12/20/2018		4,688.0		5,300.0		
PA Plug			1/3/2019		1,710.0		1,760.0		
PA Plug			1/3/2019		1,410.0		1,710.0		
PA PLUG			1/4/2019		14.0		1,193.0		
Zone Statuses									
Zone Name		Status Date	Status	Fluid Type	Job			Prod Method	
CODELL		5/9/2017	SI						
CODELL		1/4/2019	P&A		PLUG AND ABANDON, 12/14/2018 06:00				
Perforation Data									
Linked Zone		Bnch/Stg	Entered Shot Total	Top (ftKB)		Btm (ftKB)		Date	
CODELL, ORIGINAL HOLE			68	7,374.00		7,391.00		12/10/2007	
Stimulation Intervals									
Zone			Start Date		Top (ftKB)		Btm (ftKB)		
CODELL, ORIGINAL HOLE			1/9/2008		7,374.0		7,391.0		
Other In Hole									
Run Date		Des			OD (in)	Top (ftKB)	Btm (ftKB)		
12/18/2018		Cast Iron Bridge Plug			4	7,325.0	7,327.0		
Logs									
Date		Type				Top, MD (ftKB)	Btm, MD (ftKB)		
11/27/2007		Compensated Neutron				2,650.0	7,517.0		
12/6/2007		CBL/CCL/GR				1,588.0	7,485.0		
11/27/2008		Induction				0.0	7,537.0		
10/4/2018		GYRO				14.0	7,250.0		
Plug Back Total Depths									
Date		Type	Com				Depth (ftKB)		
11/28/2007		FLOAT COLLAR					7,506.0		