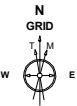


Cub Creek Energy, LLC

Location	Weld County, CO	Slot	OLANDER 22
Field	WATTENBERG	Well	OLANDER 22
Installation	Olander Pad Rework 04-09-2019	Wellbore	OLANDER 22 (PWB)

N
GRID

 Jul-12-2017
 EMA-2015 Dip: 66.61 deg Field: 52203.1 nT
 Lat: N40 12 10.3680 Long: W105 1 31.6200 Elev: 5033.00 ft
 Magnetic North is 8.59 deg East of True North
 GRID North is 0.31 deg East of True North
 To correct azimuth from True to GRID subtract 0.31 deg
 To correct azimuth from Magnetic to GRID add 8.28 deg

Created by sean.dolfinger
 Date plotted 11-Apr-2019
 Plot reference is OLANDER 22 (PWB).
 Ref wellpath is OLANDER 22 (PWP#1).
 Coordinates are in Feet reference OLANDER 22.
 True Vertical Depths are reference Rig Datum.
 Measured Depths are reference Rig Datum. Rig
 Datum: Planned Datum #1
 Rig Datum to Mean Sea Level: 5047.00 ft.
 Plot North is aligned to GRID North.

Scale 1 cm = 400 ft **East (Feet) ->**

-800 0 800 1600 2400

1600

OLANDER 22 - LP
Surface 0.00 N 0.00 E

800

0

-800

-1600

-2400

-3200

-4000

-4800

-5600

-6400

-7200

-8000

-8800

-9600

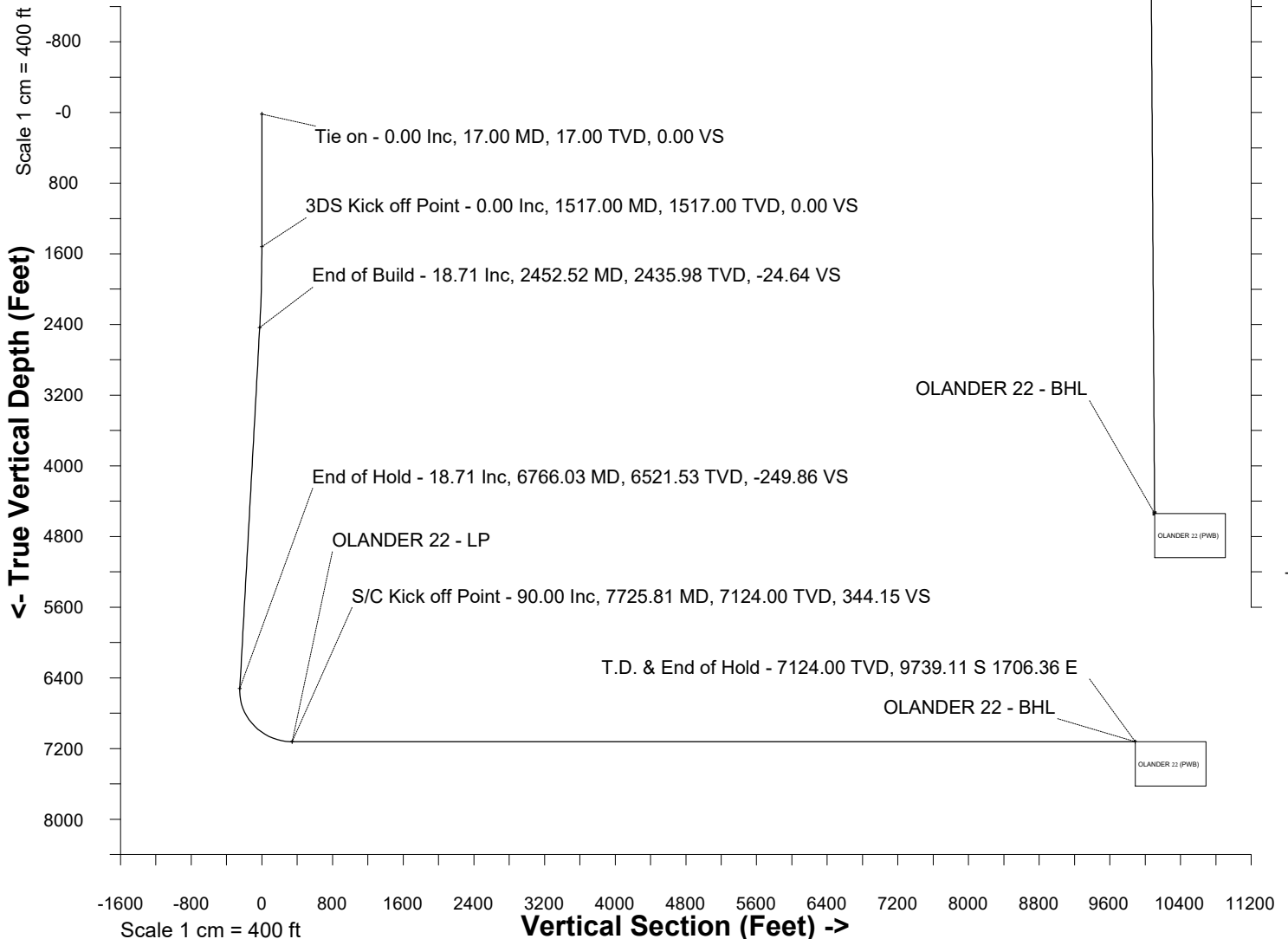
-10400

<- North(Feet)

Scale 1 cm = 400 ft

WELL PROFILE DATA

Point	MD	Inc	Azi	TVD	North	East	deg/100ft	V. Sect
Tie on	17.00	0.00	0.00	17.00	S 0.00	W 0.00		0.00
KOP	1517.00	0.00	70.70	1517.00	S 0.00	W 0.00	0.00	0.00
End of Build	2452.52	18.71	70.70	2435.98	N 50.05	E 142.89	2.00	-24.64
End of Hold	6766.03	18.71	70.70	6521.53	N 507.50	E 1448.79	0.00	-249.86
Target OLANDER 22 - LP	7725.81	90.00	179.64	7124.00	S 61.11	E 1645.37	10.00	344.15
T.D. & Target OLA...BHL	17403.99	90.00	179.64	7124.00	S 9739.11	E 1706.36	0.00	9887.46



SYSDRILL
Well Design Combined Report
Wellbore: OLANDER 22 (PWB)



Wellhead Details							
Name	Latitude	Longitude	Northing	Easting	North	East	Slot Elevation Above Ground
OLANDER 22	40.20288000	-105.02497000	1317106.9914	3132684.8189	0.72N	134.08E	0.00

Declination		
Date	Source	Time
Jul-12-2017	EMM-2015	14:01

Installation Details						
Name	Installation Position (Latitude)	Installation Position (Longitude)	Northing	Easting	Coord System Name	North Alignment
Olander Pad Rework 04-09-2019	40.20288000	-105.02545000	1317106.2735	3132550.7471	NAD83 Based Colorado State Planes, Northern Zone, US Feet	Grid

Summary Wellpath								
MD[ft]	Inc[deg]	Azi[deg]	TVD[ft]	Vertical Depth SS	North[ft]	East[ft]	Dogleg [deg/100ft]	Vertical Section[ft]
17.00	0.00	0.00	17.00	-5030.00	0.00N	0.00E		0.00
1517.00	0.00	70.70	1517.00	-3530.00	0.00N	0.00E	==>	0.00
2452.52	18.71	70.70	2435.98	-2611.02	50.05N	142.89E	2.00	-24.64
6766.03	18.71	70.70	6521.53	1474.53	507.50N	1448.79E	==>	-249.86
7725.81	90.00	179.64	7124.00	2077.00	61.11S	1645.37E	10.00	344.15
17403.99	90.00	179.64	7124.00	2077.00	9739.11S	1706.36E	==>	9887.46

Interpolated Wellpath									
MD[ft]	Inc[deg]	Azi[deg]	TVD[ft]	North[ft]	East[ft]	Dogleg [deg/100ft]	Vertical Section[ft]	Station Position (Latitude)	Station Position (Longitude)
0.00	0.00	0.00	0.00	0.00N	0.00E		0.00	40.20288000	-105.02497000
17.00	0.00	0.00	17.00	0.00N	0.00E	==>	0.00	40.20288000	-105.02497000
100.00	0.00	0.00	100.00	0.00N	0.00E	==>	0.00	40.20288000	-105.02497000
200.00	0.00	0.00	200.00	0.00N	0.00E	==>	0.00	40.20288000	-105.02497000
300.00	0.00	0.00	300.00	0.00N	0.00E	==>	0.00	40.20288000	-105.02497000
400.00	0.00	0.00	400.00	0.00N	0.00E	==>	0.00	40.20288000	-105.02497000
500.00	0.00	0.00	500.00	0.00N	0.00E	==>	0.00	40.20288000	-105.02497000
600.00	0.00	0.00	600.00	0.00N	0.00E	==>	0.00	40.20288000	-105.02497000
700.00	0.00	0.00	700.00	0.00N	0.00E	==>	0.00	40.20288000	-105.02497000
800.00	0.00	0.00	800.00	0.00N	0.00E	==>	0.00	40.20288000	-105.02497000
900.00	0.00	0.00	900.00	0.00N	0.00E	==>	0.00	40.20288000	-105.02497000
1000.00	0.00	0.00	1000.00	0.00N	0.00E	==>	0.00	40.20288000	-105.02497000
1100.00	0.00	0.00	1100.00	0.00N	0.00E	==>	0.00	40.20288000	-105.02497000
1200.00	0.00	0.00	1200.00	0.00N	0.00E	==>	0.00	40.20288000	-105.02497000
1300.00	0.00	0.00	1300.00	0.00N	0.00E	==>	0.00	40.20288000	-105.02497000
1400.00	0.00	0.00	1400.00	0.00N	0.00E	==>	0.00	40.20288000	-105.02497000
1500.00	0.00	0.00	1500.00	0.00N	0.00E	==>	0.00	40.20288000	-105.02497000
1517.00	0.00	70.70	1517.00	0.00N	0.00E	==>	0.00	40.20288000	-105.02497000
1600.00	1.66	70.70	1599.99	0.40N	1.13E	2.00	-0.20	40.20288107	-105.02496593
1700.00	3.66	70.70	1699.88	1.93N	5.51E	2.00	-0.95	40.20288522	-105.02495022
1800.00	5.66	70.70	1799.54	4.62N	13.18E	2.00	-2.27	40.20289248	-105.02492272
1900.00	7.66	70.70	1898.86	8.45N	24.13E	2.00	-4.16	40.20290284	-105.02488347
2000.00	9.66	70.70	1997.71	13.43N	38.34E	2.00	-6.61	40.20291630	-105.02483250
2100.00	11.66	70.70	2095.98	19.54N	55.79E	2.00	-9.62	40.20293283	-105.02476989
2200.00	13.66	70.70	2193.55	26.79N	76.48E	2.00	-13.19	40.20295241	-105.02469571
2300.00	15.66	70.70	2290.29	35.16N	100.36E	2.00	-17.31	40.20297502	-105.02461004
2400.00	17.66	70.70	2386.09	44.63N	127.42E	2.00	-21.97	40.20300064	-105.02451300
2452.52	18.71	70.70	2435.98	50.05N	142.89E	2.00	-24.64	40.20301529	-105.02445752
2500.00	18.71	70.70	2480.95	55.09N	157.26E	==>	-27.12	40.20302890	-105.02440597
2600.00	18.71	70.70	2575.67	65.69N	187.53E	==>	-32.34	40.20305756	-105.02429738
2700.00	18.71	70.70	2670.38	76.30N	217.81E	==>	-37.56	40.20308623	-105.02418880
2800.00	18.71	70.70	2765.10	86.90N	248.08E	==>	-42.78	40.20311489	-105.02408021

All data is in Feet unless otherwise stated
Coordinates are from Slot MD's are from Rig and TVD's are from Rig (Planned Datum #1 5047.0ft above Mean Sea Level)
Vertical Section is from 0.00N 0.00E on azimuth 170.06 degrees
Bottom hole distance is 9887.46 Feet on azimuth 170.06 degrees from Wellhead
Calculation method uses Minimum Curvature method
Prepared by
Date Printed: 11-Apr-2019

SYSDRILL
Well Design Combined Report
Wellbore: OLANDER 22 (PWB)



Interpolated Wellpath									
MD[ft]	Inc[deg]	Azi[deg]	TVD[ft]	North[ft]	East[ft]	Dogleg [deg/100ft]	Vertical Section[ft]	Station Position (Latitude)	Station Position (Longitude)
2900.00	18.71	70.70	2859.81	97.51N	278.36E	==>	-48.01	40.20314355	-105.02397163
3000.00	18.71	70.70	2954.53	108.11N	308.63E	==>	-53.23	40.20317222	-105.02386304
3100.00	18.71	70.70	3049.24	118.72N	338.91E	==>	-58.45	40.20320088	-105.02375446
3200.00	18.71	70.70	3143.96	129.32N	369.18E	==>	-63.67	40.20322955	-105.02364587
3300.00	18.71	70.70	3238.67	139.93N	399.46E	==>	-68.89	40.20325821	-105.02353728
3400.00	18.71	70.70	3333.39	150.53N	429.73E	==>	-74.11	40.20328687	-105.02342870
3500.00	18.71	70.70	3428.10	161.14N	460.01E	==>	-79.33	40.20331554	-105.02332011
3600.00	18.71	70.70	3522.82	171.74N	490.28E	==>	-84.55	40.20334420	-105.02321153
3700.00	18.71	70.70	3617.53	182.35N	520.56E	==>	-89.77	40.20337287	-105.02310294
3800.00	18.71	70.70	3712.25	192.95N	550.83E	==>	-95.00	40.20340153	-105.02299435
3900.00	18.71	70.70	3806.96	203.56N	581.11E	==>	-100.22	40.20343019	-105.02288577
4000.00	18.71	70.70	3901.68	214.16N	611.38E	==>	-105.44	40.20345886	-105.02277718
4100.00	18.71	70.70	3996.40	224.77N	641.66E	==>	-110.66	40.20348752	-105.02266860
4200.00	18.71	70.70	4091.11	235.37N	671.93E	==>	-115.88	40.20351618	-105.02256001
4300.00	18.71	70.70	4185.83	245.98N	702.21E	==>	-121.10	40.20354484	-105.02245142
4400.00	18.71	70.70	4280.54	256.58N	732.48E	==>	-126.32	40.20357351	-105.02234284
4500.00	18.71	70.70	4375.26	267.19N	762.76E	==>	-131.54	40.20360217	-105.02223425
4600.00	18.71	70.70	4469.97	277.79N	793.03E	==>	-136.77	40.20363083	-105.02212566
4700.00	18.71	70.70	4564.69	288.40N	823.31E	==>	-141.99	40.20365949	-105.02201708
4800.00	18.71	70.70	4659.40	299.00N	853.58E	==>	-147.21	40.20368816	-105.02190849
4900.00	18.71	70.70	4754.12	309.61N	883.86E	==>	-152.43	40.20371682	-105.02179990
5000.00	18.71	70.70	4848.83	320.21N	914.13E	==>	-157.65	40.20374548	-105.02169131
5100.00	18.71	70.70	4943.55	330.82N	944.40E	==>	-162.87	40.20377414	-105.02158273
5200.00	18.71	70.70	5038.26	341.42N	974.68E	==>	-168.09	40.20380280	-105.02147414
5300.00	18.71	70.70	5132.98	352.03N	1004.95E	==>	-173.31	40.20383147	-105.02136555
5400.00	18.71	70.70	5227.69	362.63N	1035.23E	==>	-178.53	40.20386013	-105.02125697
5500.00	18.71	70.70	5322.41	373.24N	1065.50E	==>	-183.76	40.20388879	-105.02114838
5600.00	18.71	70.70	5417.12	383.84N	1095.78E	==>	-188.98	40.20391745	-105.02103979
5700.00	18.71	70.70	5511.84	394.45N	1126.05E	==>	-194.20	40.20394611	-105.02093120
5800.00	18.71	70.70	5606.55	405.05N	1156.33E	==>	-199.42	40.20397477	-105.02082261
5900.00	18.71	70.70	5701.27	415.66N	1186.60E	==>	-204.64	40.20400344	-105.02071403
6000.00	18.71	70.70	5795.98	426.26N	1216.88E	==>	-209.86	40.20403210	-105.02060544
6100.00	18.71	70.70	5890.70	436.87N	1247.15E	==>	-215.08	40.20406076	-105.02049685
6200.00	18.71	70.70	5985.41	447.47N	1277.43E	==>	-220.30	40.20408942	-105.02038826
6300.00	18.71	70.70	6080.13	458.08N	1307.70E	==>	-225.52	40.20411808	-105.02027967
6400.00	18.71	70.70	6174.84	468.68N	1337.98E	==>	-230.75	40.20414674	-105.02017108
6500.00	18.71	70.70	6269.56	479.29N	1368.25E	==>	-235.97	40.20417540	-105.02006250
6600.00	18.71	70.70	6364.28	489.89N	1398.53E	==>	-241.19	40.20420406	-105.01995391
6700.00	18.71	70.70	6458.99	500.50N	1428.80E	==>	-246.41	40.20423272	-105.01984532
6766.03	18.71	70.70	6521.53	507.50N	1448.79E	==>	-249.86	40.20425165	-105.01977362
6800.00	17.94	81.23	6553.79	510.10N	1459.11E	10.00	-250.64	40.20425863	-105.01973663
6900.00	19.20	112.75	6648.81	506.08N	1489.58E	10.00	-241.42	40.20424713	-105.01962764
7000.00	24.68	135.44	6741.70	484.79N	1519.47E	10.00	-215.29	40.20418824	-105.01952105
7100.00	32.29	149.18	6829.62	446.87N	1547.87E	10.00	-173.04	40.20408375	-105.01942010
7200.00	40.86	157.90	6909.91	393.49N	1573.93E	10.00	-115.96	40.20393684	-105.01932785
7300.00	49.88	163.98	6980.13	326.27N	1596.84E	10.00	-45.79	40.20375197	-105.01924711
7400.00	59.15	168.61	7038.13	247.24N	1615.92E	10.00	35.35	40.20353475	-105.01918034
7500.00	68.55	172.41	7082.17	158.80N	1630.59E	10.00	124.98	40.20329178	-105.01912956
7600.00	78.03	175.74	7110.90	63.66N	1640.39E	10.00	220.39	40.20303046	-105.01909632
7700.00	87.54	178.85	7123.45	35.32S	1645.03E	10.00	318.68	40.20275872	-105.01908162
7725.81	90.00	179.64	7124.00	61.11S	1645.37E	10.00	344.15	40.20268790	-105.01908090
7800.00	90.00	179.64	7124.00	135.31S	1645.84E	==>	417.31	40.20248424	-105.01908067
7900.00	90.00	179.64	7124.00	235.30S	1646.47E	==>	515.92	40.20220974	-105.01908035
8000.00	90.00	179.64	7124.00	335.30S	1647.10E	==>	614.52	40.20193524	-105.01908004
8100.00	90.00	179.64	7124.00	435.30S	1647.73E	==>	713.13	40.20166074	-105.01907972
8200.00	90.00	179.64	7124.00	535.30S	1648.36E	==>	811.74	40.20138624	-105.01907941
8300.00	90.00	179.64	7124.00	635.30S	1648.99E	==>	910.34	40.20111174	-105.01907910
8400.00	90.00	179.64	7124.00	735.29S	1649.62E	==>	1008.95	40.20083725	-105.01907878

All data is in Feet unless otherwise stated
Coordinates are from Slot MD's are from Rig and TVD's are from Rig (Planned Datum #1 5047.0ft above Mean Sea Level)
Vertical Section is from 0.00N 0.00E on azimuth 170.06 degrees
Bottom hole distance is 9887.46 Feet on azimuth 170.06 degrees from Wellhead
Calculation method uses Minimum Curvature method
Prepared by
Date Printed: 11-Apr-2019

SYSDRILL
Well Design Combined Report
Wellbore: OLANDER 22 (PWB)



Interpolated Wellpath									
MD[ft]	Inc[deg]	Azi[deg]	TVD[ft]	North[ft]	East[ft]	Dogleg [deg/100ft]	Vertical Section[ft]	Station Position (Latitude)	Station Position (Longitude)
8500.00	90.00	179.64	7124.00	835.29S	1650.25E	==>	1107.56	40.20056275	-105.01907847
8600.00	90.00	179.64	7124.00	935.29S	1650.88E	==>	1206.16	40.20028825	-105.01907815
8700.00	90.00	179.64	7124.00	1035.29S	1651.51E	==>	1304.77	40.20001375	-105.01907784
8800.00	90.00	179.64	7124.00	1135.29S	1652.14E	==>	1403.37	40.19973925	-105.01907752
8900.00	90.00	179.64	7124.00	1235.28S	1652.77E	==>	1501.98	40.19946475	-105.01907721
9000.00	90.00	179.64	7124.00	1335.28S	1653.40E	==>	1600.59	40.19919025	-105.01907690
9100.00	90.00	179.64	7124.00	1435.28S	1654.03E	==>	1699.19	40.19891575	-105.01907658
9200.00	90.00	179.64	7124.00	1535.28S	1654.66E	==>	1797.80	40.19864125	-105.01907627
9300.00	90.00	179.64	7124.00	1635.28S	1655.29E	==>	1896.41	40.19836675	-105.01907595
9400.00	90.00	179.64	7124.00	1735.27S	1655.92E	==>	1995.01	40.19809225	-105.01907564
9500.00	90.00	179.64	7124.00	1835.27S	1656.55E	==>	2093.62	40.19781775	-105.01907533
9600.00	90.00	179.64	7124.00	1935.27S	1657.18E	==>	2192.23	40.19754325	-105.01907501
9700.00	90.00	179.64	7124.00	2035.27S	1657.81E	==>	2290.83	40.19726875	-105.01907470
9800.00	90.00	179.64	7124.00	2135.27S	1658.44E	==>	2389.44	40.19699425	-105.01907438
9900.00	90.00	179.64	7124.00	2235.26S	1659.07E	==>	2488.05	40.19671975	-105.01907407
10000.00	90.00	179.64	7124.00	2335.26S	1659.70E	==>	2586.65	40.19644526	-105.01907375
10100.00	90.00	179.64	7124.00	2435.26S	1660.33E	==>	2685.26	40.19617076	-105.01907344
10200.00	90.00	179.64	7124.00	2535.26S	1660.96E	==>	2783.86	40.19589626	-105.01907313
10300.00	90.00	179.64	7124.00	2635.26S	1661.59E	==>	2882.47	40.19562176	-105.01907281
10400.00	90.00	179.64	7124.00	2735.25S	1662.22E	==>	2981.08	40.19534726	-105.01907250
10500.00	90.00	179.64	7124.00	2835.25S	1662.85E	==>	3079.68	40.19507276	-105.01907218
10600.00	90.00	179.64	7124.00	2935.25S	1663.48E	==>	3178.29	40.19479826	-105.01907187
10700.00	90.00	179.64	7124.00	3035.25S	1664.11E	==>	3276.90	40.19452376	-105.01907156
10800.00	90.00	179.64	7124.00	3135.25S	1664.74E	==>	3375.50	40.19424926	-105.01907124
10900.00	90.00	179.64	7124.00	3235.24S	1665.37E	==>	3474.11	40.19397476	-105.01907093
11000.00	90.00	179.64	7124.00	3335.24S	1666.00E	==>	3572.72	40.19370026	-105.01907061
11100.00	90.00	179.64	7124.00	3435.24S	1666.63E	==>	3671.32	40.19342576	-105.01907030
11200.00	90.00	179.64	7124.00	3535.24S	1667.26E	==>	3769.93	40.19315126	-105.01906998
11300.00	90.00	179.64	7124.00	3635.24S	1667.90E	==>	3868.53	40.19287676	-105.01906967
11400.00	90.00	179.64	7124.00	3735.23S	1668.53E	==>	3967.14	40.19260226	-105.01906936
11500.00	90.00	179.64	7124.00	3835.23S	1669.16E	==>	4065.75	40.19232776	-105.01906904
11600.00	90.00	179.64	7124.00	3935.23S	1669.79E	==>	4164.35	40.19205326	-105.01906873
11700.00	90.00	179.64	7124.00	4035.23S	1670.42E	==>	4262.96	40.19177876	-105.01906841
11800.00	90.00	179.64	7124.00	4135.23S	1671.05E	==>	4361.57	40.19150426	-105.01906810
11900.00	90.00	179.64	7124.00	4235.22S	1671.68E	==>	4460.17	40.19122976	-105.01906779
12000.00	90.00	179.64	7124.00	4335.22S	1672.31E	==>	4558.78	40.19095526	-105.01906747
12100.00	90.00	179.64	7124.00	4435.22S	1672.94E	==>	4657.39	40.19068076	-105.01906716
12200.00	90.00	179.64	7124.00	4535.22S	1673.57E	==>	4755.99	40.19040626	-105.01906684
12300.00	90.00	179.64	7124.00	4635.22S	1674.20E	==>	4854.60	40.19013176	-105.01906653
12400.00	90.00	179.64	7124.00	4735.21S	1674.83E	==>	4953.20	40.18985726	-105.01906621
12500.00	90.00	179.64	7124.00	4835.21S	1675.46E	==>	5051.81	40.18958276	-105.01906590
12600.00	90.00	179.64	7124.00	4935.21S	1676.09E	==>	5150.42	40.18930826	-105.01906559
12700.00	90.00	179.64	7124.00	5035.21S	1676.72E	==>	5249.02	40.18903377	-105.01906527
12800.00	90.00	179.64	7124.00	5135.21S	1677.35E	==>	5347.63	40.18875927	-105.01906496
12900.00	90.00	179.64	7124.00	5235.20S	1677.98E	==>	5446.24	40.18848477	-105.01906464
13000.00	90.00	179.64	7124.00	5335.20S	1678.61E	==>	5544.84	40.18821027	-105.01906433
13100.00	90.00	179.64	7124.00	5435.20S	1679.24E	==>	5643.45	40.18793577	-105.01906402
13200.00	90.00	179.64	7124.00	5535.20S	1679.87E	==>	5742.06	40.18766127	-105.01906370
13300.00	90.00	179.64	7124.00	5635.20S	1680.50E	==>	5840.66	40.18738677	-105.01906339
13400.00	90.00	179.64	7124.00	5735.19S	1681.13E	==>	5939.27	40.18711227	-105.01906307
13500.00	90.00	179.64	7124.00	5835.19S	1681.76E	==>	6037.87	40.18683777	-105.01906276
13600.00	90.00	179.64	7124.00	5935.19S	1682.39E	==>	6136.48	40.18656327	-105.01906245
13700.00	90.00	179.64	7124.00	6035.19S	1683.02E	==>	6235.09	40.18628877	-105.01906213
13800.00	90.00	179.64	7124.00	6135.19S	1683.65E	==>	6333.69	40.18601427	-105.01906182
13900.00	90.00	179.64	7124.00	6235.18S	1684.28E	==>	6432.30	40.18573977	-105.01906150
14000.00	90.00	179.64	7124.00	6335.18S	1684.91E	==>	6530.91	40.18546527	-105.01906119
14100.00	90.00	179.64	7124.00	6435.18S	1685.54E	==>	6629.51	40.18519077	-105.01906088
14200.00	90.00	179.64	7124.00	6535.18S	1686.17E	==>	6728.12	40.18491627	-105.01906056
14300.00	90.00	179.64	7124.00	6635.18S	1686.80E	==>	6826.73	40.18464177	-105.01906025

All data is in Feet unless otherwise stated
Coordinates are from Slot MD's are from Rig and TVD's are from Rig (Planned Datum #1 5047.0ft above Mean Sea Level)
Vertical Section is from 0.00N 0.00E on azimuth 170.06 degrees
Bottom hole distance is 9887.46 Feet on azimuth 170.06 degrees from Wellhead
Calculation method uses Minimum Curvature method
Prepared by
Date Printed: 11-Apr-2019

SYSDRILL
Well Design Combined Report
Wellbore: OLANDER 22 (PWB)



Interpolated Wellpath									
MD[ft]	Inc[deg]	Azi[deg]	TVD[ft]	North[ft]	East[ft]	Dogleg [deg/100ft]	Vertical Section[ft]	Station Position (Latitude)	Station Position (Longitude)
14400.00	90.00	179.64	7124.00	6735.17S	1687.43E	==>	6925.33	40.18436727	-105.01905993
14500.00	90.00	179.64	7124.00	6835.17S	1688.06E	==>	7023.94	40.18409277	-105.01905962
14600.00	90.00	179.64	7124.00	6935.17S	1688.69E	==>	7122.54	40.18381827	-105.01905931
14700.00	90.00	179.64	7124.00	7035.17S	1689.32E	==>	7221.15	40.18354377	-105.01905899
14800.00	90.00	179.64	7124.00	7135.17S	1689.95E	==>	7319.76	40.18326927	-105.01905868
14900.00	90.00	179.64	7124.00	7235.16S	1690.58E	==>	7418.36	40.18299477	-105.01905836
15000.00	90.00	179.64	7124.00	7335.16S	1691.21E	==>	7516.97	40.18272027	-105.01905805
15100.00	90.00	179.64	7124.00	7435.16S	1691.84E	==>	7615.58	40.18244577	-105.01905773
15200.00	90.00	179.64	7124.00	7535.16S	1692.47E	==>	7714.18	40.18217127	-105.01905742
15300.00	90.00	179.64	7124.00	7635.16S	1693.10E	==>	7812.79	40.18189677	-105.01905711
15400.00	90.00	179.64	7124.00	7735.15S	1693.73E	==>	7911.40	40.18162227	-105.01905679
15500.00	90.00	179.64	7124.00	7835.15S	1694.36E	==>	8010.00	40.18134777	-105.01905648
15600.00	90.00	179.64	7124.00	7935.15S	1694.99E	==>	8108.61	40.18107327	-105.01905616
15700.00	90.00	179.64	7124.00	8035.15S	1695.62E	==>	8207.21	40.18079877	-105.01905585
15800.00	90.00	179.64	7124.00	8135.15S	1696.25E	==>	8305.82	40.18052427	-105.01905554
15900.00	90.00	179.64	7124.00	8235.14S	1696.88E	==>	8404.43	40.18024977	-105.01905522
16000.00	90.00	179.64	7124.00	8335.14S	1697.51E	==>	8503.03	40.17997527	-105.01905491
16100.00	90.00	179.64	7124.00	8435.14S	1698.14E	==>	8601.64	40.17970077	-105.01905459
16200.00	90.00	179.64	7124.00	8535.14S	1698.77E	==>	8700.25	40.17942627	-105.01905428
16300.00	90.00	179.64	7124.00	8635.14S	1699.40E	==>	8798.85	40.17915177	-105.01905397
16400.00	90.00	179.64	7124.00	8735.13S	1700.03E	==>	8897.46	40.17887726	-105.01905365
16500.00	90.00	179.64	7124.00	8835.13S	1700.66E	==>	8996.07	40.17860276	-105.01905334
16600.00	90.00	179.64	7124.00	8935.13S	1701.29E	==>	9094.67	40.17832826	-105.01905302
16700.00	90.00	179.64	7124.00	9035.13S	1701.92E	==>	9193.28	40.17805376	-105.01905271
16800.00	90.00	179.64	7124.00	9135.13S	1702.55E	==>	9291.89	40.17777926	-105.01905240
16900.00	90.00	179.64	7124.00	9235.12S	1703.18E	==>	9390.49	40.17750476	-105.01905208
17000.00	90.00	179.64	7124.00	9335.12S	1703.81E	==>	9489.10	40.17723026	-105.01905177
17100.00	90.00	179.64	7124.00	9435.12S	1704.44E	==>	9587.70	40.17695576	-105.01905145
17200.00	90.00	179.64	7124.00	9535.12S	1705.07E	==>	9686.31	40.17668126	-105.01905114
17300.00	90.00	179.64	7124.00	9635.12S	1705.70E	==>	9784.92	40.17640676	-105.01905083
17400.00	90.00	179.64	7124.00	9735.12S	1706.33E	==>	9883.52	40.17613226	-105.01905051
17403.99	90.00	179.64	7124.00	9739.11S	1706.36E	==>	9887.46	40.17612130	-105.01905050

All data is in Feet unless otherwise stated
Coordinates are from Slot MD's are from Rig and TVD's are from Rig (Planned Datum #1 5047.0ft above Mean Sea Level)
Vertical Section is from 0.00N 0.00E on azimuth 170.06 degrees
Bottom hole distance is 9887.46 Feet on azimuth 170.06 degrees from Wellhead
Calculation method uses Minimum Curvature method
Prepared by
Date Printed: 11-Apr-2019

