

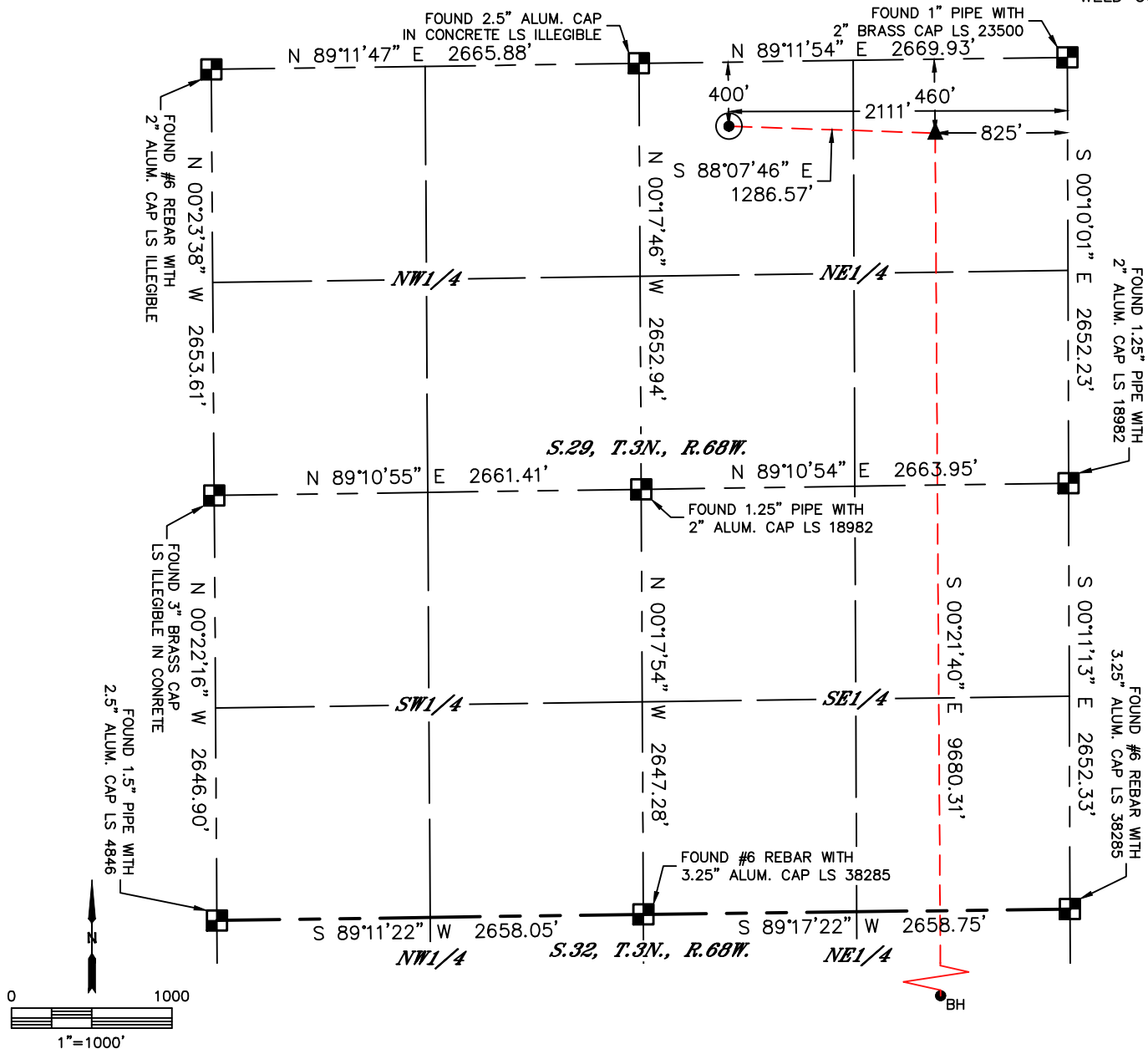


Lat40°, Inc. 6250 W. 10th Street, Unit 2, Greeley, CO 970-515-5294

# WELL LOCATION CERTIFICATE

OLANDER 21

SECTION: 29  
TOWNSHIP: 3N  
RANGE: 68W  
6TH. P.M.  
WELD COUNTY, CO



| CLIENT: CUB CREEK ENERGY, LLC      |           |            | LANDMAN: TRACY BUTZEN |                |                       |           |
|------------------------------------|-----------|------------|-----------------------|----------------|-----------------------|-----------|
| INSTRUMENT OPERATOR: DAVID BRANDON |           |            | SURVEY DATE: 6/8/2017 |                | SURFACE USE: CROPLAND |           |
| SHL FOOTAGE                        | SHL LAT ° | SHL LONG ° | SHL PDOP              | SHL ELEV (FT.) | SHL 1/4/1/4           | SHL S-T-R |
| 400 FNL 2111 FEL                   | 40.20281  | -105.02486 | 2.7                   | 5030           | NWNE                  | 29-3-68   |

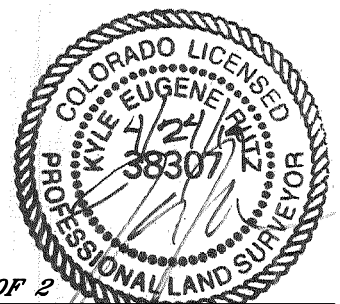
| BHL FOOTAGE     | BHL LAT ° | BHL LONG ° | BHL S-T-R | EP LAT ° | EP LONG °  | EP S-T-R |
|-----------------|-----------|------------|-----------|----------|------------|----------|
| 460 FSL 825 FEL | 40.17611  | -105.02023 | 32-3-68   | 40.20268 | -105.02026 | 29-3-68  |

## LEGEND

- = ALIQUOT MONUMENT AS DESCRIBED
- = CALCULATED POSITION
- = SURFACE HOLE LOCATION (SHL)
- ▲ = ENTRY POINT LOCATION (EP)
- <sub>BH</sub> = BOTTOM HOLE LOCATION (BHL)
- ⊙ = EXISTING WELL
- ⊙ = ABANDONED WELL

## NOTE:

- 1) Bearings shown are Grid Bearings of the Colorado State Plane Coordinate System, North Zone, North American Datum 1983. The lineal dimensions as contained herein are based upon the "U.S. Survey Foot."
- 2) Distances to section lines measured at 90 degrees from said section lines.
- 3) Ground elevations are based on an observed GPS elevation (NAVD 1988 DATUM).
- 4) Latitude and Longitude shown are (NAD 83 DATUM).
- 5) IMPROVEMENTS: See LOCATION DRAWING for all visible improvements within 500' of oil and gas location.
- 6) This map does not represent a boundary survey.



SHEET 1 OF 2

Kyle E. Rutz—On behalf of Lat40, Inc.  
Colorado Licensed Professional Land Surveyor No. 38307  
DATE: 4/23/2019  
PROJECT#: 2017062

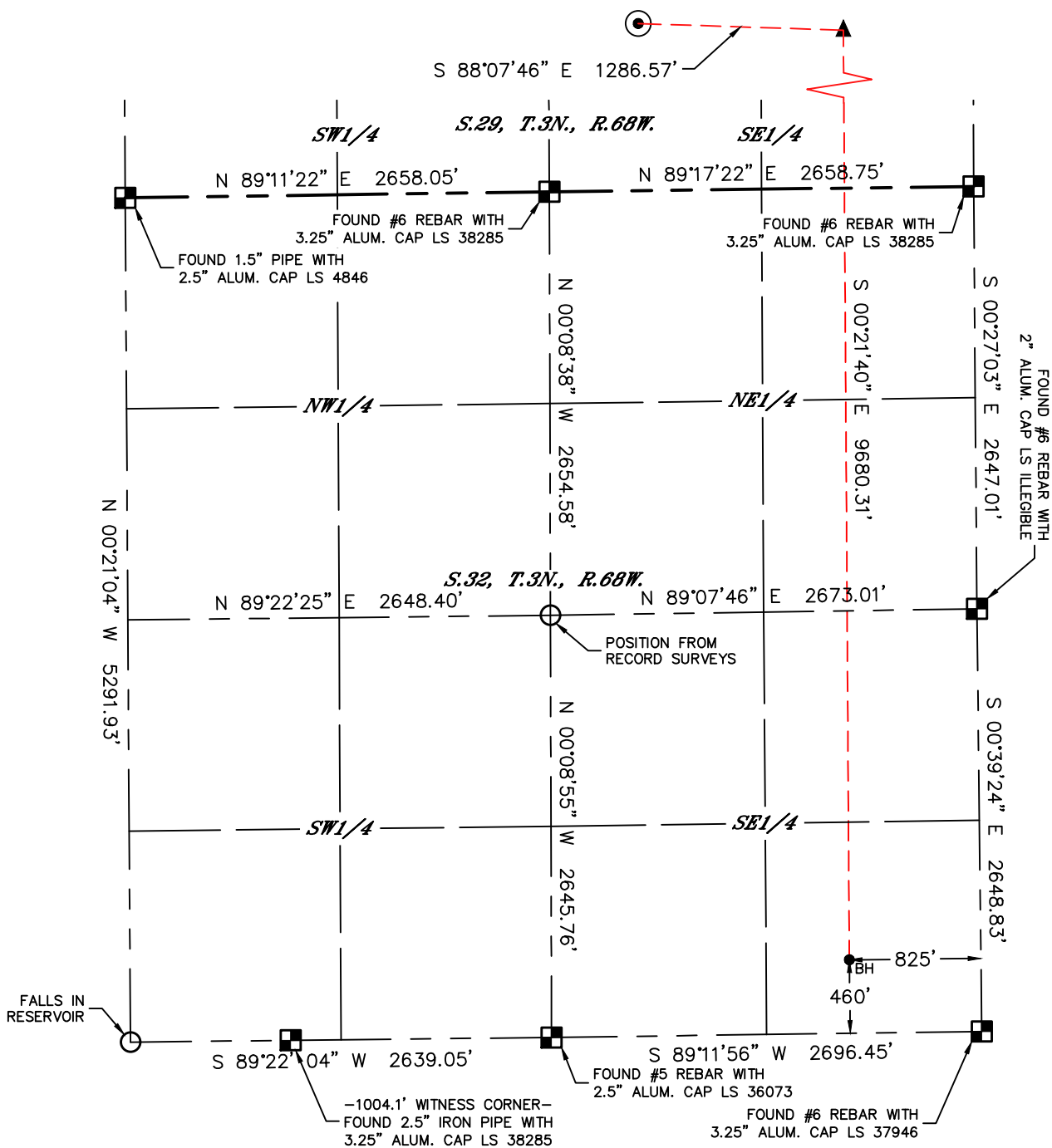


Lat40°, Inc. 6250 W. 10th Street, Unit 2, Greeley, CO 970-515-5294

# WELL LOCATION CERTIFICATE

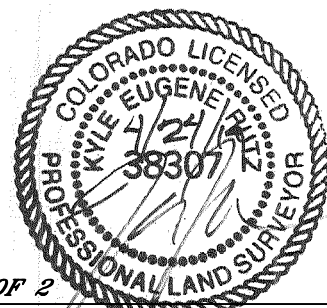
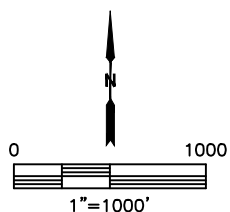
OLANDER 21

SECTION: 29  
TOWNSHIP: 3N  
RANGE: 68W  
6TH. P.M.  
WELD COUNTY, CO



## LEGEND

- = ALIQUOT MONUMENT AS DESCRIBED
- = CALCULATED POSITION
- ⊙ = SURFACE HOLE LOCATION (SHL)
- ▲ = ENTRY POINT LOCATION (EP)
- = BOTTOM HOLE LOCATION (BHL)
- ⊕ = EXISTING WELL
- ⊖ = ABANDONED WELL



**SHEET 2 OF 2**

Kyle E. Rutz—On behalf of Lat40, Inc.  
Colorado Licensed Professional Land Surveyor No. 38307  
DATE: 4/23/2019  
PROJECT#: 2017062