

Kyle E. Rutz—On behalf of Lat48, Inc.  
Colorado Licensed Professional Land Surveyor No. 38307  
DATE: 4/23/2019  
PROJECT#: 2017062

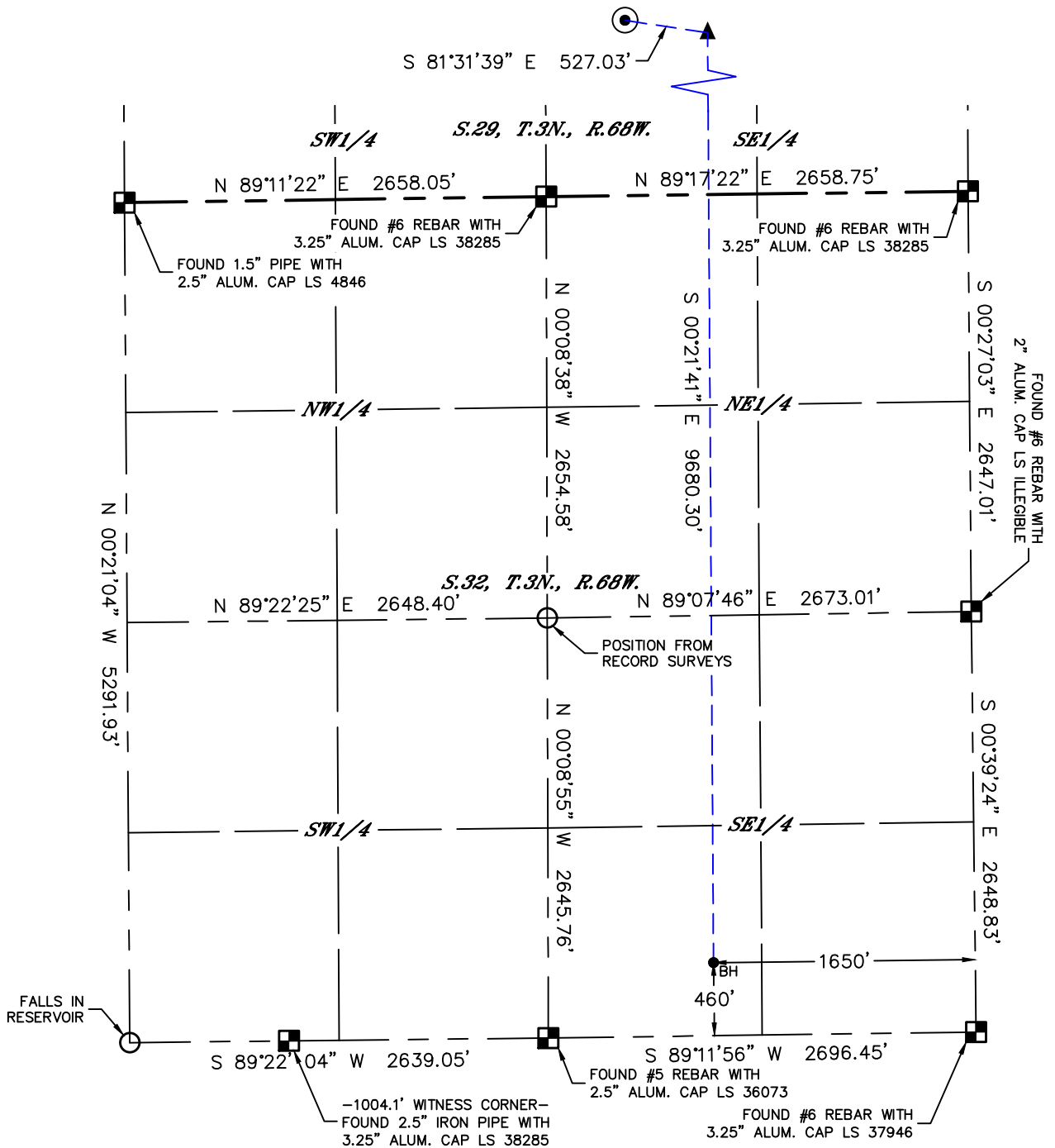


Lat40°, Inc. 6250 W. 10th Street, Unit 2, Greeley, CO 970-515-5294

# WELL LOCATION CERTIFICATE

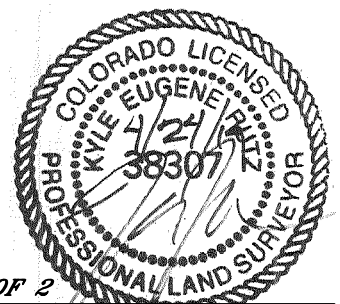
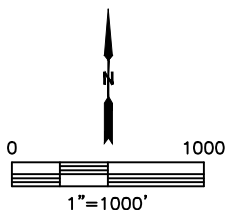
OLANDER 17

SECTION: 29  
TOWNSHIP: 3N  
RANGE: 68W  
6TH. P.M.  
WELD COUNTY, CO



## LEGEND

- = ALIQUOT MONUMENT AS DESCRIBED
- = CALCULATED POSITION
- = SURFACE HOLE LOCATION (SHL)
- ▲ = ENTRY POINT LOCATION (EP)
- = BOTTOM HOLE LOCATION (BHL)
- ⊙ = EXISTING WELL
- ⊙ = ABANDONED WELL



SHEET 2 OF 2

Kyle E. Rutz—On behalf of Lat40, Inc.  
Colorado Licensed Professional Land Surveyor No. 38307  
DATE: 4/23/2019  
PROJECT#: 2017062