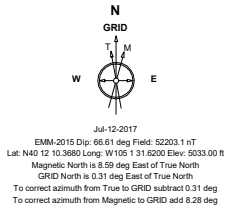


Cub Creek Energy, LLC

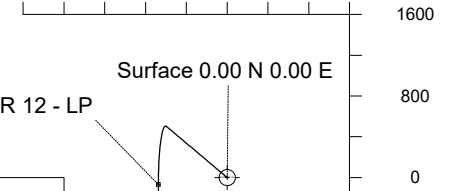
Location	Weld County, CO	Slot	OLANDER 12
Field	WATTENBERG	Well	OLANDER 12
Installation	Olander Pad Rework 04-09-2019	Wellbore	OLANDER 12 (PWB)



Created by sean.dolfinger
 Date plotted 11-Apr-2019
 Plot reference is OLANDER 12 (PWB).
 Ref wellpath is OLANDER 12 (PWP#1).
 Coordinates are in Feet reference OLANDER 12.
 True Vertical Depths are reference Rig Datum.
 Measured Depths are reference Rig Datum. Rig
 Datum: Planned Datum #1
 Rig Datum to Mean Sea Level: 5048.00 ft.
 Plot North is aligned to GRID North.

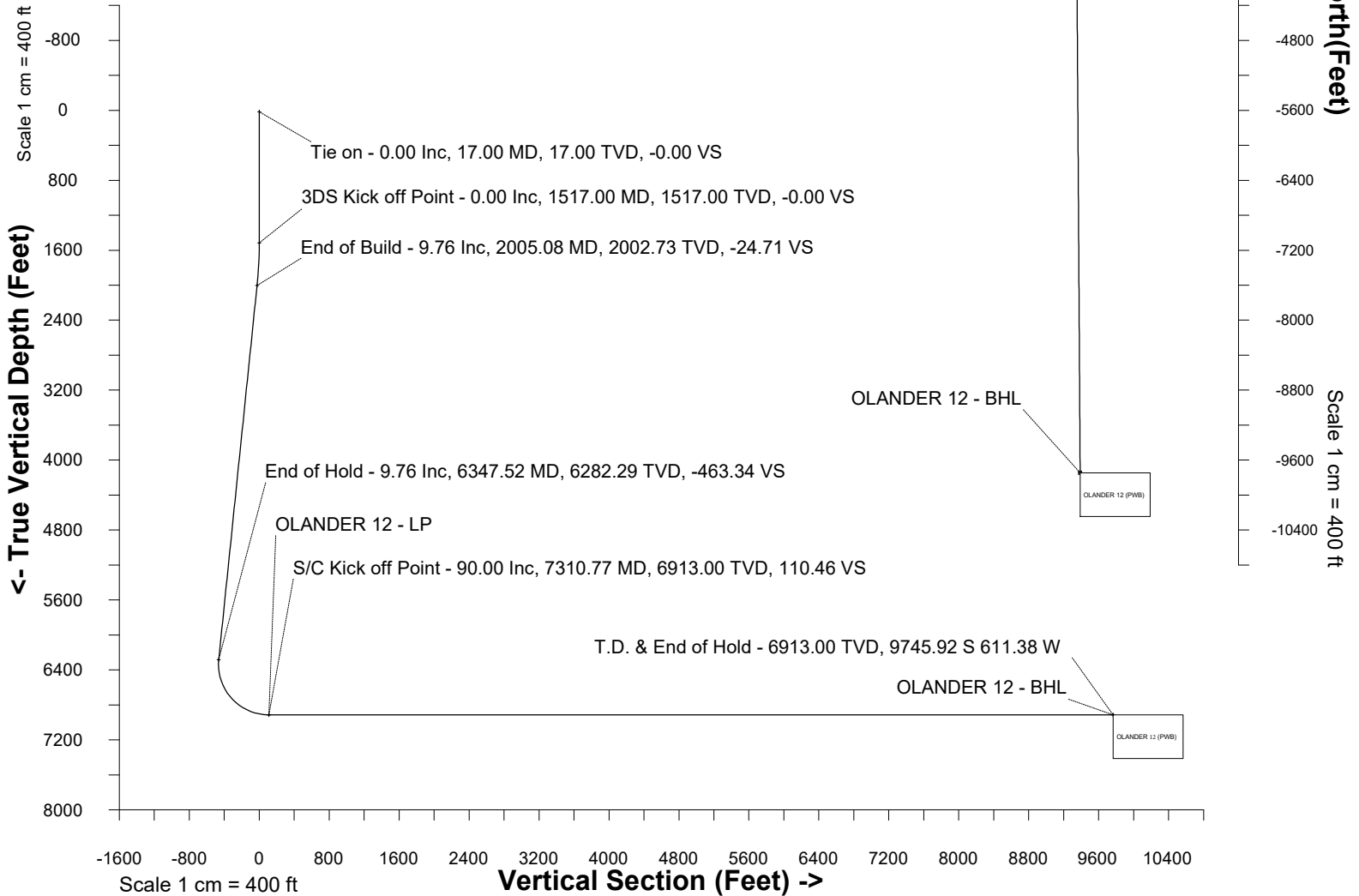
Scale 1 cm = 400 ft **East (Feet) ->**

-1600 -800 0 800



WELL PROFILE DATA

Point	MD	Inc	Azi	TVD	North	East	deg/100ft	V. Sect
Tie on	17.00	0.00	0.00	17.00	S 0.00	W 0.00		-0.00
KOP	1517.00	0.00	310.16	1517.00	S 0.00	W 0.00	0.00	-0.00
End of Build	2005.08	9.76	310.16	2002.73	N 26.75	W 31.70	2.00	-24.71
End of Hold	6347.52	9.76	310.16	6282.29	N 501.54	W 594.42	0.00	-463.34
Target OLANDER 12 - LP	7310.77	90.00	179.63	6913.00	S 68.44	W 673.26	10.00	110.46
T.D. & Target OLA...BHL	16988.45	90.00	179.63	6913.00	S 9745.92	W 611.38	0.00	9765.08



Azimuth 183.59 with reference 0.00 N, 0.00 E from OLANDER 12

SYSDRILL
Well Design Combined Report
Wellbore: OLANDER 12 (PWB)



Wellhead Details							
Name	Latitude	Longitude	Northing	Easting	North	East	Slot Elevation Above Ground
OLANDER 12	40.20281000	-105.02513000	1317081.2526	3132640.2648	25.02S	89.52E	0.00

Declination		
Date	Source	Time
Jul-12-2017	EMM-2015	14:01

Installation Details						
Name	Installation Position (Latitude)	Installation Position (Longitude)	Northing	Easting	Coord System Name	North Alignment
Olander Pad Rework 04-09-2019	40.20288000	-105.02545000	1317106.2735	3132550.7471	NAD83 Based Colorado State Planes, Northern Zone, US Feet	Grid

Summary Wellpath								
MD[ft]	Inc[deg]	Azi[deg]	TVD[ft]	Vertical Depth SS	North[ft]	East[ft]	Dogleg [deg/100ft]	Vertical Section[ft]
17.00	0.00	0.00	17.00	-5031.00	0.00N	0.00E		0.00
1517.00	0.00	310.16	1517.00	-3531.00	0.00N	0.00E	==>	0.00
2005.08	9.76	310.16	2002.73	-3045.27	26.75N	31.70W	2.00	-24.71
6347.52	9.76	310.16	6282.29	1234.29	501.54N	594.42W	==>	-463.34
7310.77	90.00	179.63	6913.00	1865.00	68.44S	673.26W	10.00	110.46
16988.45	90.00	179.63	6913.00	1865.00	9745.92S	611.38W	==>	9765.08

Interpolated Wellpath									
MD[ft]	Inc[deg]	Azi[deg]	TVD[ft]	North[ft]	East[ft]	Dogleg [deg/100ft]	Vertical Section[ft]	Station Position (Latitude)	Station Position (Longitude)
0.00	0.00	0.00	0.00	0.00N	0.00E		0.00	40.20281000	-105.02513000
17.00	0.00	0.00	17.00	0.00N	0.00E	==>	0.00	40.20281000	-105.02513000
100.00	0.00	0.00	100.00	0.00N	0.00E	==>	0.00	40.20281000	-105.02513000
200.00	0.00	0.00	200.00	0.00N	0.00E	==>	0.00	40.20281000	-105.02513000
300.00	0.00	0.00	300.00	0.00N	0.00E	==>	0.00	40.20281000	-105.02513000
400.00	0.00	0.00	400.00	0.00N	0.00E	==>	0.00	40.20281000	-105.02513000
500.00	0.00	0.00	500.00	0.00N	0.00E	==>	0.00	40.20281000	-105.02513000
600.00	0.00	0.00	600.00	0.00N	0.00E	==>	0.00	40.20281000	-105.02513000
700.00	0.00	0.00	700.00	0.00N	0.00E	==>	0.00	40.20281000	-105.02513000
800.00	0.00	0.00	800.00	0.00N	0.00E	==>	0.00	40.20281000	-105.02513000
900.00	0.00	0.00	900.00	0.00N	0.00E	==>	0.00	40.20281000	-105.02513000
1000.00	0.00	0.00	1000.00	0.00N	0.00E	==>	0.00	40.20281000	-105.02513000
1100.00	0.00	0.00	1100.00	0.00N	0.00E	==>	0.00	40.20281000	-105.02513000
1200.00	0.00	0.00	1200.00	0.00N	0.00E	==>	0.00	40.20281000	-105.02513000
1300.00	0.00	0.00	1300.00	0.00N	0.00E	==>	0.00	40.20281000	-105.02513000
1400.00	0.00	0.00	1400.00	0.00N	0.00E	==>	0.00	40.20281000	-105.02513000
1500.00	0.00	0.00	1500.00	0.00N	0.00E	==>	0.00	40.20281000	-105.02513000
1517.00	0.00	310.16	1517.00	0.00N	0.00E	==>	0.00	40.20281000	-105.02513000
1600.00	1.66	310.16	1599.99	0.78N	0.92W	2.00	-0.72	40.20281214	-105.02513327
1700.00	3.66	310.16	1699.88	3.77N	4.47W	2.00	-3.48	40.20282041	-105.02514591
1800.00	5.66	310.16	1799.54	9.01N	10.67W	2.00	-8.32	40.20283488	-105.02516804
1900.00	7.66	310.16	1898.86	16.49N	19.54W	2.00	-15.23	40.20285554	-105.02519963
2000.00	9.66	310.16	1997.71	26.19N	31.05W	2.00	-24.20	40.20288236	-105.02524064
2005.08	9.76	310.16	2002.73	26.75N	31.70W	2.00	-24.71	40.20288389	-105.02524297
2100.00	9.76	310.16	2096.27	37.13N	44.00W	==>	-34.30	40.20291256	-105.02528681
2200.00	9.76	310.16	2194.82	48.06N	56.96W	==>	-44.40	40.20294276	-105.02533299
2300.00	9.76	310.16	2293.37	58.99N	69.92W	==>	-54.50	40.20297296	-105.02537917
2400.00	9.76	310.16	2391.92	69.93N	82.88W	==>	-64.60	40.20300317	-105.02542535
2500.00	9.76	310.16	2490.48	80.86N	95.83W	==>	-74.70	40.20303337	-105.02547153
2600.00	9.76	310.16	2589.03	91.80N	108.79W	==>	-84.80	40.20306357	-105.02551771
2700.00	9.76	310.16	2687.58	102.73N	121.75W	==>	-94.90	40.20309378	-105.02556389
2800.00	9.76	310.16	2786.13	113.66N	134.71W	==>	-105.01	40.20312398	-105.02561007

All data is in Feet unless otherwise stated
Coordinates are from Slot MD's are from Rig and TVD's are from Rig (Planned Datum #1 5048.0ft above Mean Sea Level)
Vertical Section is from 0.00N 0.00E on azimuth 183.59 degrees
Bottom hole distance is 9765.08 Feet on azimuth 183.59 degrees from Wellhead
Calculation method uses Minimum Curvature method
Prepared by
Date Printed: 11-Apr-2019

SYSDRILL
Well Design Combined Report
Wellbore: OLANDER 12 (PWB)



Interpolated Wellpath									
MD[ft]	Inc[deg]	Azi[deg]	TVD[ft]	North[ft]	East[ft]	Dogleg [deg/100ft]	Vertical Section[ft]	Station Position (Latitude)	Station Position (Longitude)
2900.00	9.76	310.16	2884.69	124.60N	147.67W	==>	-115.11	40.20315418	-105.02565625
3000.00	9.76	310.16	2983.24	135.53N	160.63W	==>	-125.21	40.20318438	-105.02570244
3100.00	9.76	310.16	3081.79	146.46N	173.59W	==>	-135.31	40.20321459	-105.02574862
3200.00	9.76	310.16	3180.34	157.40N	186.54W	==>	-145.41	40.20324479	-105.02579480
3300.00	9.76	310.16	3278.89	168.33N	199.50W	==>	-155.51	40.20327499	-105.02584098
3400.00	9.76	310.16	3377.45	179.27N	212.46W	==>	-165.61	40.20330520	-105.02588716
3500.00	9.76	310.16	3476.00	190.20N	225.42W	==>	-175.71	40.20333540	-105.02593334
3600.00	9.76	310.16	3574.55	201.13N	238.38W	==>	-185.81	40.20336560	-105.02597952
3700.00	9.76	310.16	3673.10	212.07N	251.34W	==>	-195.92	40.20339581	-105.02602571
3800.00	9.76	310.16	3771.65	223.00N	264.30W	==>	-206.02	40.20342601	-105.02607189
3900.00	9.76	310.16	3870.21	233.94N	277.25W	==>	-216.12	40.20345621	-105.02611807
4000.00	9.76	310.16	3968.76	244.87N	290.21W	==>	-226.22	40.20348642	-105.02616425
4100.00	9.76	310.16	4067.31	255.80N	303.17W	==>	-236.32	40.20351662	-105.02621043
4200.00	9.76	310.16	4165.86	266.74N	316.13W	==>	-246.42	40.20354682	-105.02625661
4300.00	9.76	310.16	4264.42	277.67N	329.09W	==>	-256.52	40.20357702	-105.02630279
4400.00	9.76	310.16	4362.97	288.60N	342.05W	==>	-266.62	40.20360723	-105.02634898
4500.00	9.76	310.16	4461.52	299.54N	355.01W	==>	-276.72	40.20363743	-105.02639516
4600.00	9.76	310.16	4560.07	310.47N	367.96W	==>	-286.83	40.20366763	-105.02644134
4700.00	9.76	310.16	4658.62	321.41N	380.92W	==>	-296.93	40.20369784	-105.02648752
4800.00	9.76	310.16	4757.18	332.34N	393.88W	==>	-307.03	40.20372804	-105.02653370
4900.00	9.76	310.16	4855.73	343.27N	406.84W	==>	-317.13	40.20375824	-105.02657989
5000.00	9.76	310.16	4954.28	354.21N	419.80W	==>	-327.23	40.20378844	-105.02662607
5100.00	9.76	310.16	5052.83	365.14N	432.76W	==>	-337.33	40.20381865	-105.02667225
5200.00	9.76	310.16	5151.38	376.08N	445.71W	==>	-347.43	40.20384885	-105.02671843
5300.00	9.76	310.16	5249.94	387.01N	458.67W	==>	-357.53	40.20387905	-105.02676461
5400.00	9.76	310.16	5348.49	397.94N	471.63W	==>	-367.63	40.20390926	-105.02681080
5500.00	9.76	310.16	5447.04	408.88N	484.59W	==>	-377.73	40.20393946	-105.02685698
5600.00	9.76	310.16	5545.59	419.81N	497.55W	==>	-387.84	40.20396966	-105.02690316
5700.00	9.76	310.16	5644.15	430.74N	510.51W	==>	-397.94	40.20399986	-105.02694934
5800.00	9.76	310.16	5742.70	441.68N	523.47W	==>	-408.04	40.20403007	-105.02699553
5900.00	9.76	310.16	5841.25	452.61N	536.42W	==>	-418.14	40.20406027	-105.02704171
6000.00	9.76	310.16	5939.80	463.55N	549.38W	==>	-428.24	40.20409047	-105.02708789
6100.00	9.76	310.16	6038.35	474.48N	562.34W	==>	-438.34	40.20412067	-105.02713407
6200.00	9.76	310.16	6136.91	485.41N	575.30W	==>	-448.44	40.20415088	-105.02718025
6300.00	9.76	310.16	6235.46	496.35N	588.26W	==>	-458.54	40.20418108	-105.02722644
6347.52	9.76	310.16	6282.29	501.54N	594.42W	==>	-463.34	40.20419543	-105.02724838
6400.00	7.53	277.88	6334.20	504.89N	601.23W	10.00	-466.25	40.20420471	-105.02727270
6500.00	11.61	219.19	6433.00	497.97N	614.10W	10.00	-458.55	40.20418591	-105.02731893
6600.00	20.29	200.35	6529.12	473.86N	626.52W	10.00	-433.70	40.20411991	-105.02736384
6700.00	29.79	192.84	6619.64	433.29N	638.10W	10.00	-392.48	40.20400871	-105.02740607
6800.00	39.52	188.76	6701.82	377.48N	648.49W	10.00	-336.14	40.20385568	-105.02744433
6900.00	49.34	186.08	6773.14	308.14N	657.37W	10.00	-266.38	40.20366548	-105.02747746
7000.00	59.21	184.10	6831.46	227.37N	664.48W	10.00	-185.33	40.20344388	-105.02750445
7100.00	69.11	182.49	6874.99	137.63N	669.60W	10.00	-95.44	40.20319762	-105.02752449
7200.00	79.02	181.09	6902.42	41.65N	672.58W	10.00	0.55	40.20293418	-105.02753696
7300.00	88.93	179.77	6912.90	57.67S	673.31W	10.00	99.71	40.20266156	-105.02754149
7310.77	90.00	179.63	6913.00	68.44S	673.26W	10.00	110.46	40.20263200	-105.02754150
7400.00	90.00	179.63	6913.00	157.67S	672.69W	==>	199.48	40.20238707	-105.02754116
7500.00	90.00	179.63	6913.00	257.67S	672.05W	==>	299.24	40.20211257	-105.02754078
7600.00	90.00	179.63	6913.00	357.67S	671.41W	==>	399.00	40.20183807	-105.02754040
7700.00	90.00	179.63	6913.00	457.66S	670.77W	==>	498.76	40.20156357	-105.02754002
7800.00	90.00	179.63	6913.00	557.66S	670.13W	==>	598.52	40.20128907	-105.02753963
7900.00	90.00	179.63	6913.00	657.66S	669.49W	==>	698.29	40.20101457	-105.02753925
8000.00	90.00	179.63	6913.00	757.66S	668.85W	==>	798.05	40.20074007	-105.02753887
8100.00	90.00	179.63	6913.00	857.66S	668.21W	==>	897.81	40.20046557	-105.02753849
8200.00	90.00	179.63	6913.00	957.65S	667.57W	==>	997.57	40.20019107	-105.02753811
8300.00	90.00	179.63	6913.00	1057.65S	666.93W	==>	1097.33	40.19991657	-105.02753773
8400.00	90.00	179.63	6913.00	1157.65S	666.29W	==>	1197.09	40.19964207	-105.02753735

All data is in Feet unless otherwise stated
Coordinates are from Slot MD's are from Rig and TVD's are from Rig (Planned Datum #1 5048.0ft above Mean Sea Level)
Vertical Section is from 0.00N 0.00E on azimuth 183.59 degrees
Bottom hole distance is 9765.08 Feet on azimuth 183.59 degrees from Wellhead
Calculation method uses Minimum Curvature method
Prepared by
Date Printed: 11-Apr-2019

SYSDRILL
Well Design Combined Report
Wellbore: OLANDER 12 (PWB)



Interpolated Wellpath									
MD[ft]	Inc[deg]	Azi[deg]	TVD[ft]	North[ft]	East[ft]	Dogleg [deg/100ft]	Vertical Section[ft]	Station Position (Latitude)	Station Position (Longitude)
8500.00	90.00	179.63	6913.00	1257.65S	665.65W	==>	1296.86	40.19936757	-105.02753696
8600.00	90.00	179.63	6913.00	1357.65S	665.01W	==>	1396.62	40.19909308	-105.02753658
8700.00	90.00	179.63	6913.00	1457.64S	664.37W	==>	1496.38	40.19881858	-105.02753620
8800.00	90.00	179.63	6913.00	1557.64S	663.74W	==>	1596.14	40.19854408	-105.02753582
8900.00	90.00	179.63	6913.00	1657.64S	663.10W	==>	1695.90	40.19826958	-105.02753544
9000.00	90.00	179.63	6913.00	1757.64S	662.46W	==>	1795.66	40.19799508	-105.02753506
9100.00	90.00	179.63	6913.00	1857.64S	661.82W	==>	1895.43	40.19772058	-105.02753468
9200.00	90.00	179.63	6913.00	1957.63S	661.18W	==>	1995.19	40.19744608	-105.02753429
9300.00	90.00	179.63	6913.00	2057.63S	660.54W	==>	2094.95	40.19717158	-105.02753391
9400.00	90.00	179.63	6913.00	2157.63S	659.90W	==>	2194.71	40.19689708	-105.02753353
9500.00	90.00	179.63	6913.00	2257.63S	659.26W	==>	2294.47	40.19662258	-105.02753315
9600.00	90.00	179.63	6913.00	2357.63S	658.62W	==>	2394.24	40.19634808	-105.02753277
9700.00	90.00	179.63	6913.00	2457.62S	657.98W	==>	2494.00	40.19607358	-105.02753239
9800.00	90.00	179.63	6913.00	2557.62S	657.34W	==>	2593.76	40.19579908	-105.02753201
9900.00	90.00	179.63	6913.00	2657.62S	656.70W	==>	2693.52	40.19552458	-105.02753162
10000.00	90.00	179.63	6913.00	2757.62S	656.06W	==>	2793.28	40.19525008	-105.02753124
10100.00	90.00	179.63	6913.00	2857.61S	655.42W	==>	2893.04	40.19497558	-105.02753086
10200.00	90.00	179.63	6913.00	2957.61S	654.78W	==>	2992.81	40.19470108	-105.02753048
10300.00	90.00	179.63	6913.00	3057.61S	654.14W	==>	3092.57	40.19442659	-105.02753010
10400.00	90.00	179.63	6913.00	3157.61S	653.51W	==>	3192.33	40.19415209	-105.02752972
10500.00	90.00	179.63	6913.00	3257.61S	652.87W	==>	3292.09	40.19387759	-105.02752934
10600.00	90.00	179.63	6913.00	3357.60S	652.23W	==>	3391.85	40.19360309	-105.02752896
10700.00	90.00	179.63	6913.00	3457.60S	651.59W	==>	3491.61	40.19332859	-105.02752857
10800.00	90.00	179.63	6913.00	3557.60S	650.95W	==>	3591.38	40.19305409	-105.02752819
10900.00	90.00	179.63	6913.00	3657.60S	650.31W	==>	3691.14	40.19277959	-105.02752781
11000.00	90.00	179.63	6913.00	3757.60S	649.67W	==>	3790.90	40.19250509	-105.02752743
11100.00	90.00	179.63	6913.00	3857.59S	649.03W	==>	3890.66	40.19223059	-105.02752705
11200.00	90.00	179.63	6913.00	3957.59S	648.39W	==>	3990.42	40.19195609	-105.02752667
11300.00	90.00	179.63	6913.00	4057.59S	647.75W	==>	4090.19	40.19168159	-105.02752629
11400.00	90.00	179.63	6913.00	4157.59S	647.11W	==>	4189.95	40.19140709	-105.02752590
11500.00	90.00	179.63	6913.00	4257.59S	646.47W	==>	4289.71	40.19113259	-105.02752552
11600.00	90.00	179.63	6913.00	4357.58S	645.83W	==>	4389.47	40.19085809	-105.02752514
11700.00	90.00	179.63	6913.00	4457.58S	645.19W	==>	4489.23	40.19058359	-105.02752476
11800.00	90.00	179.63	6913.00	4557.58S	644.55W	==>	4588.99	40.19030909	-105.02752438
11900.00	90.00	179.63	6913.00	4657.58S	643.92W	==>	4688.76	40.19003459	-105.02752400
12000.00	90.00	179.63	6913.00	4757.58S	643.28W	==>	4788.52	40.18976009	-105.02752362
12100.00	90.00	179.63	6913.00	4857.57S	642.64W	==>	4888.28	40.18948559	-105.02752324
12200.00	90.00	179.63	6913.00	4957.57S	642.00W	==>	4988.04	40.18921109	-105.02752285
12300.00	90.00	179.63	6913.00	5057.57S	641.36W	==>	5087.80	40.18893659	-105.02752247
12400.00	90.00	179.63	6913.00	5157.57S	640.72W	==>	5187.56	40.18866209	-105.02752209
12500.00	90.00	179.63	6913.00	5257.57S	640.08W	==>	5287.33	40.18838759	-105.02752171
12600.00	90.00	179.63	6913.00	5357.56S	639.44W	==>	5387.09	40.18811309	-105.02752133
12700.00	90.00	179.63	6913.00	5457.56S	638.80W	==>	5486.85	40.18783859	-105.02752095
12800.00	90.00	179.63	6913.00	5557.56S	638.16W	==>	5586.61	40.18756409	-105.02752057
12900.00	90.00	179.63	6913.00	5657.56S	637.52W	==>	5686.37	40.18728959	-105.02752019
13000.00	90.00	179.63	6913.00	5757.56S	636.88W	==>	5786.13	40.18701509	-105.02751980
13100.00	90.00	179.63	6913.00	5857.55S	636.24W	==>	5885.90	40.18674059	-105.02751942
13200.00	90.00	179.63	6913.00	5957.55S	635.60W	==>	5985.66	40.18646609	-105.02751904
13300.00	90.00	179.63	6913.00	6057.55S	634.96W	==>	6085.42	40.18619159	-105.02751866
13400.00	90.00	179.63	6913.00	6157.55S	634.33W	==>	6185.18	40.18591709	-105.02751828
13500.00	90.00	179.63	6913.00	6257.55S	633.69W	==>	6284.94	40.18564259	-105.02751790
13600.00	90.00	179.63	6913.00	6357.54S	633.05W	==>	6384.71	40.18536810	-105.02751752
13700.00	90.00	179.63	6913.00	6457.54S	632.41W	==>	6484.47	40.18509360	-105.02751714
13800.00	90.00	179.63	6913.00	6557.54S	631.77W	==>	6584.23	40.18481910	-105.02751675
13900.00	90.00	179.63	6913.00	6657.54S	631.13W	==>	6683.99	40.18454460	-105.02751637
14000.00	90.00	179.63	6913.00	6757.54S	630.49W	==>	6783.75	40.18427010	-105.02751599
14100.00	90.00	179.63	6913.00	6857.53S	629.85W	==>	6883.51	40.18399560	-105.02751561
14200.00	90.00	179.63	6913.00	6957.53S	629.21W	==>	6983.28	40.18372110	-105.02751523
14300.00	90.00	179.63	6913.00	7057.53S	628.57W	==>	7083.04	40.18344660	-105.02751485

All data is in Feet unless otherwise stated
Coordinates are from Slot MD's are from Rig and TVD's are from Rig (Planned Datum #1 5048.0ft above Mean Sea Level)
Vertical Section is from 0.00N 0.00E on azimuth 183.59 degrees
Bottom hole distance is 9765.08 Feet on azimuth 183.59 degrees from Wellhead
Calculation method uses Minimum Curvature method
Prepared by
Date Printed: 11-Apr-2019

SYSDRILL
Well Design Combined Report
Wellbore: OLANDER 12 (PWB)



Interpolated Wellpath									
MD[ft]	Inc[deg]	Azi[deg]	TVD[ft]	North[ft]	East[ft]	Dogleg [deg/100ft]	Vertical Section[ft]	Station Position (Latitude)	Station Position (Longitude)
14400.00	90.00	179.63	6913.00	7157.53S	627.93W	==>	7182.80	40.18317210	-105.02751447
14500.00	90.00	179.63	6913.00	7257.52S	627.29W	==>	7282.56	40.18289760	-105.02751409
14600.00	90.00	179.63	6913.00	7357.52S	626.65W	==>	7382.32	40.18262310	-105.02751370
14700.00	90.00	179.63	6913.00	7457.52S	626.01W	==>	7482.08	40.18234860	-105.02751332
14800.00	90.00	179.63	6913.00	7557.52S	625.37W	==>	7581.85	40.18207410	-105.02751294
14900.00	90.00	179.63	6913.00	7657.52S	624.74W	==>	7681.61	40.18179960	-105.02751256
15000.00	90.00	179.63	6913.00	7757.51S	624.10W	==>	7781.37	40.18152510	-105.02751218
15100.00	90.00	179.63	6913.00	7857.51S	623.46W	==>	7881.13	40.18125060	-105.02751180
15200.00	90.00	179.63	6913.00	7957.51S	622.82W	==>	7980.89	40.18097610	-105.02751142
15300.00	90.00	179.63	6913.00	8057.51S	622.18W	==>	8080.65	40.18070160	-105.02751104
15400.00	90.00	179.63	6913.00	8157.51S	621.54W	==>	8180.42	40.18042710	-105.02751065
15500.00	90.00	179.63	6913.00	8257.50S	620.90W	==>	8280.18	40.18015259	-105.02751027
15600.00	90.00	179.63	6913.00	8357.50S	620.26W	==>	8379.94	40.17987809	-105.02750989
15700.00	90.00	179.63	6913.00	8457.50S	619.62W	==>	8479.70	40.17960359	-105.02750951
15800.00	90.00	179.63	6913.00	8557.50S	618.98W	==>	8579.46	40.17932909	-105.02750913
15900.00	90.00	179.63	6913.00	8657.50S	618.34W	==>	8679.23	40.17905459	-105.02750875
16000.00	90.00	179.63	6913.00	8757.49S	617.70W	==>	8778.99	40.17878009	-105.02750837
16100.00	90.00	179.63	6913.00	8857.49S	617.06W	==>	8878.75	40.17850559	-105.02750799
16200.00	90.00	179.63	6913.00	8957.49S	616.42W	==>	8978.51	40.17823109	-105.02750761
16300.00	90.00	179.63	6913.00	9057.49S	615.78W	==>	9078.27	40.17795659	-105.02750722
16400.00	90.00	179.63	6913.00	9157.49S	615.14W	==>	9178.03	40.17768209	-105.02750684
16500.00	90.00	179.63	6913.00	9257.48S	614.51W	==>	9277.80	40.17740759	-105.02750646
16600.00	90.00	179.63	6913.00	9357.48S	613.87W	==>	9377.56	40.17713309	-105.02750608
16700.00	90.00	179.63	6913.00	9457.48S	613.23W	==>	9477.32	40.17685859	-105.02750570
16800.00	90.00	179.63	6913.00	9557.48S	612.59W	==>	9577.08	40.17658409	-105.02750532
16900.00	90.00	179.63	6913.00	9657.48S	611.95W	==>	9676.84	40.17630959	-105.02750494
16988.45	90.00	179.63	6913.00	9745.92S	611.38W	==>	9765.08	40.17606680	-105.02750460

All data is in Feet unless otherwise stated
Coordinates are from Slot MD's are from Rig and TVD's are from Rig (Planned Datum #1 5048.0ft above Mean Sea Level)
Vertical Section is from 0.00N 0.00E on azimuth 183.59 degrees
Bottom hole distance is 9765.08 Feet on azimuth 183.59 degrees from Wellhead
Calculation method uses Minimum Curvature method
Prepared by
Date Printed: 11-Apr-2019

