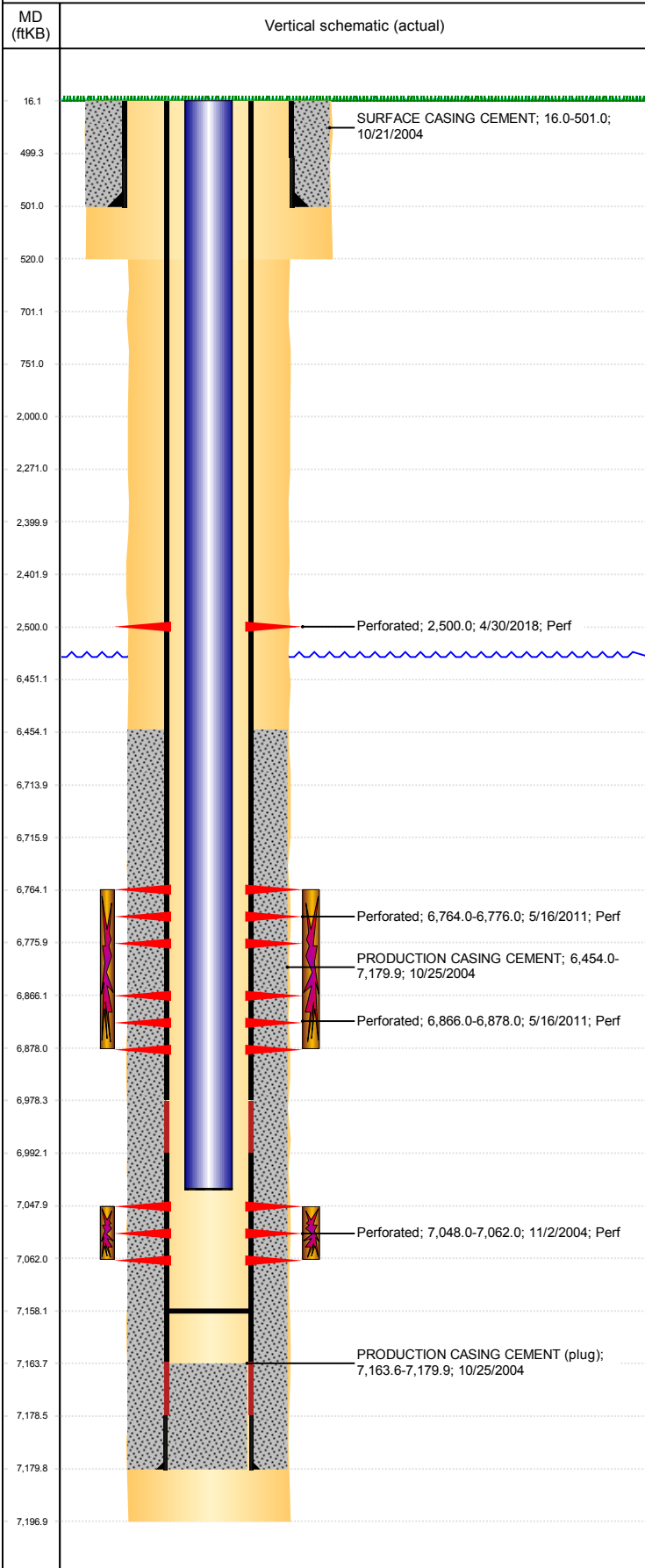


Well Name: **OCOMA B31-23**

VERTICAL, ORIGINAL HOLE, 5/3/2019 9:57:24 AM



Well Header									
API 05-123-22440		Business Unit DJ BASIN		District 15		Well Config VERTICAL			
KB - GL / MSL (ft...) 16.00		Spud Date 10/20/2004		P & A Date		Well Production Status PR		SoRT No	
Comment									
Surface Location (Congressional)									
Qtr 3 SE	Qtr 4 SE	Section 31	Twonshp 5	Twonsh... N	Range 64	Rng E... W	Actual Latitude (°) 40.35131919	Actual Longitude (°) -104.58751254	
Wellbore Sections									
Section Des		Size (in)		Act Top, MD (ftKB)		Act Btm, MD (ftKB)			
SURFACE		12 1/4		16		520			
PRODUCTION		7 7/8		520		7,197			
Casing Strings									
Csg Des		Run Date		OD (in)	Wt/Len (lb/ft)	Grade	Top, MD (ftKB)	MD (ftKB)	
Surface Casing		10/21/2004		8 5/8	24.00	J-55	16.0	501.0	
Production		10/25/2004		4 1/2	11.60	M-80	16.0	7,179.9	
Cement									
Des				Start Date		Top (ftKB)		Btm (ftKB)	
SURFACE CASING CEMENT				10/21/2004		16.0		501.0	
PRODUCTION CASING CEMENT				10/25/2004		6,454.0		7,179.9	
Zone Statuses									
Zone Name		Status Date	Status	Fluid Type	Job			Prod Method	
CODELL, ORIGINAL HOLE		2/5/2010	PR	Water	RE-FRAC & RECOMPLETE, 5/2/2011 16:00			Flowing	
CODELL		5/17/2011	PR	Water	RE-FRAC & RECOMPLETE, 5/2/2011 16:00			Flowing	
NIOBRARA		2/5/2010	PR	Water	RE-FRAC & RECOMPLETE, 5/2/2011 16:00			Flowing	
NIOBRARA		5/17/2011	PR	Water	RE-FRAC & RECOMPLETE, 5/2/2011 16:00			Flowing	
Perforation Data									
Linked Zone		Bnch/Stg	Entered Shot Total	Top (ftKB)	Btm (ftKB)	Date			
CODELL, ORIGINAL HOLE				2,500.00	2,500.00	4/30/2018			
NIOBRARA, ORIGINAL HOLE		A	24	6,764.00	6,776.00	5/16/2011			
NIOBRARA, ORIGINAL HOLE		B	24	6,866.00	6,878.00	5/16/2011			
CODELL, ORIGINAL HOLE			56	7,048.00	7,062.00	11/2/2004			
Stimulation Intervals									
Zone			Start Date		Top (ftKB)		Btm (ftKB)		
NIOBRARA, ORIGINAL HOLE			5/16/2011		6,764.0		6,878.0		
CODELL, ORIGINAL HOLE			11/4/2004		7,048.0		7,062.0		
CODELL, ORIGINAL HOLE			5/16/2011		7,048.0		7,062.0		
Other In Hole									
Run Date		Des			OD (in)	Top (ftKB)		Btm (ftKB)	
Logs									
Date		Type				Top, MD (ftKB)	Btm, MD (ftKB)		
10/24/2004		COMPENSATED DENSITY				501.0	7,197.0		
10/24/2004		INDUCTION				501,501.0	7,197.0		
10/30/2004		CBL/CCL/GR				6,236.0	7,158.0		
4/8/2011		GYRO				10.0	7,000.0		
Plug Back Total Depths									
Date		Type	Com				Depth (ftKB)		
10/25/2004		LATCH DOWN COLLAR	LATCH DOWN COLLAR				7,163.6		
10/30/2004		CEMENT PLUG	DEPTH LOGGER				7,158.0		