



01672922

**NOBLE ENERGY PRODUCTION INC.**

Range K 17- 9  
NESE 17-4N-66W  
1473' FSL & 150' FEL  
Wattenberg

Weld County, Colorado  
CURRENT WELLBORE SCHEMATIC  
9/21/2005

**CODELL/NIORARA NEW DRILL**

API: 05-123-23046  
OGCC #

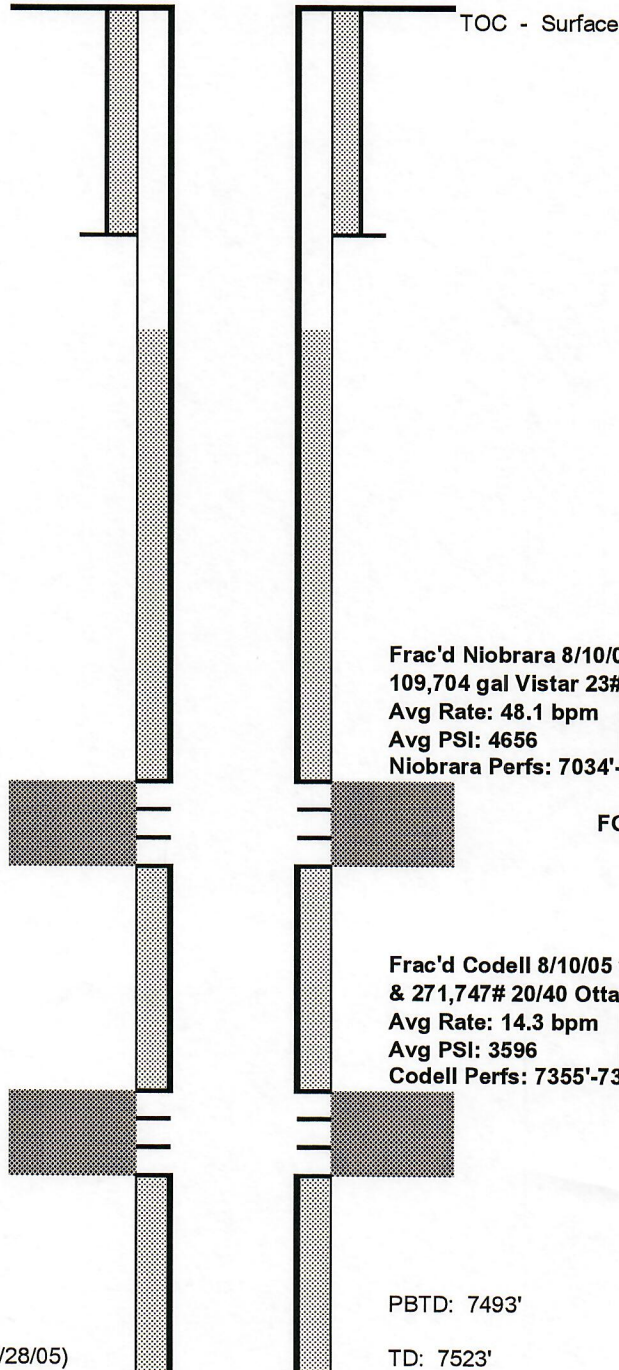
GL Elev: 4738'  
KB Elev: 4750'

**Spud Date:** 7/23/2005

**Surface Casing :**  
8-5/8" 24# @ 438' (10jts)  
Cement: 340 sx

**Tubing Details:**  
N/A

TOC @ 3836'



**Production Casing :**  
4-1/2" 11.6# M80 @ 7508' (179jts)  
Cement: 420sx + 160sx (lead & tail) (TD: 7/28/05)

Comments: Batteried w/UPRC 17-1616

9/23/2005 - JH