



6899 Pecos Street, Unit C  
Denver, Colorado 80221

CLIENT: Kerr-McGee Oil & Gas Onshore LP

LOGGED BY: Eric Siegel

PROJECT MANAGER: Robert Cornez

DRILLING CONTRACTOR: Tasman Geosciences, Inc.

DRILLING EQUIPMENT: AMS Powerprobe 9300-SK

DRILL BIT SIZE (INCHES): 2.375"

DATE STARTED - COMPLETED: 11/10/2014

TOTAL WELL DEPTH (FT. BGS): 8

DEPTH TO WATER (FT. BGS): 4.67 (11/20/14) ▼

## Howard 25C-22HZ Production Facility

BORING / WELL ID: BH01

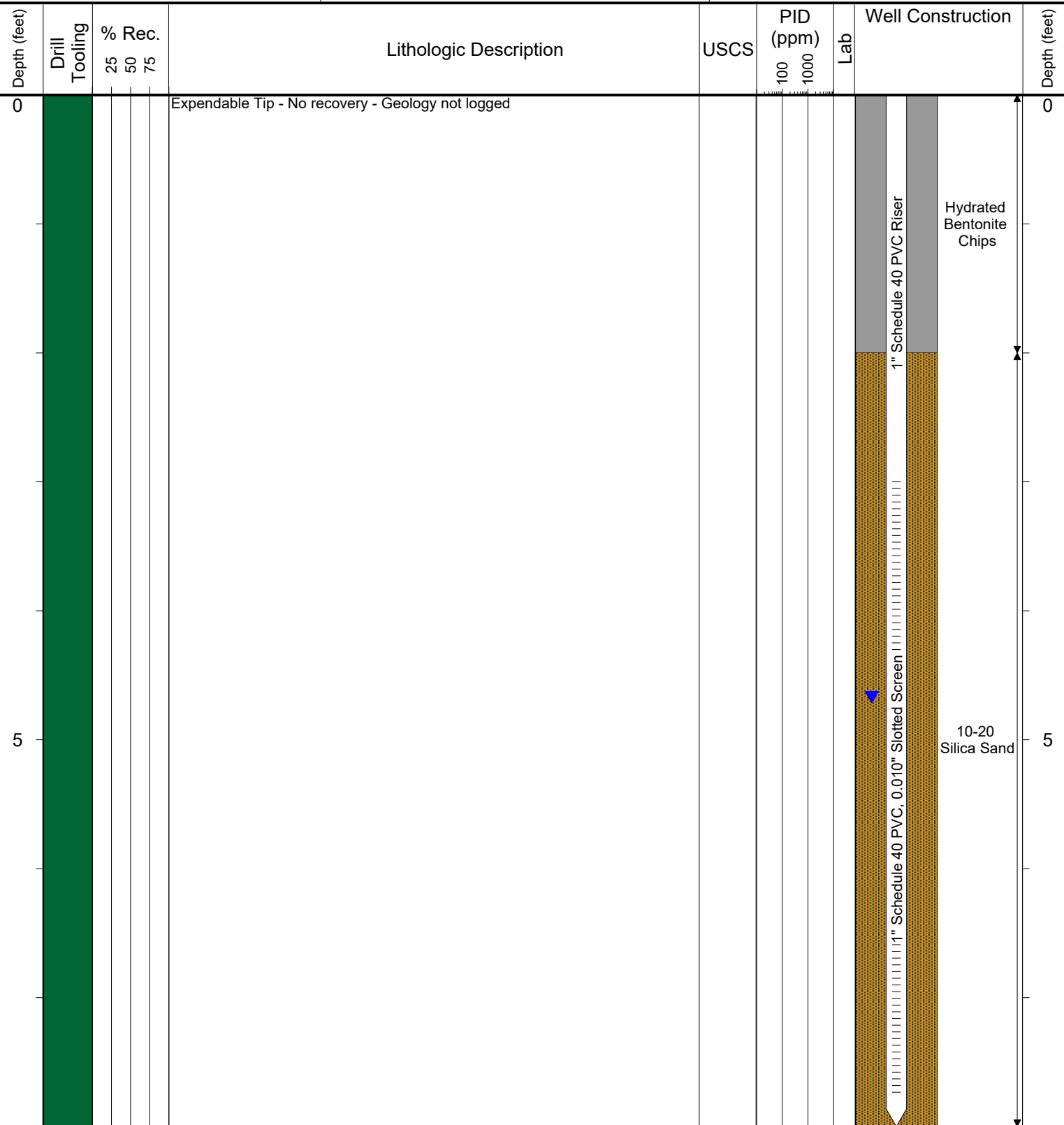
COMPLETION: Flush Mount

LATITUDE (WGS 1984): 40.01775084

LONGITUDE (WGS 1984): -104.8703138

CASING ELEVATION (FT. AMSL): 5051.29

GROUND ELEVATION (FT. AMSL): 5051.42



Drilling / Sample Method:

Macro-Core

Hand Auger

CME Core Barrel

Expendable Well Tip

Hydrovac

Laboratory Sample Types:

Geotechnical Lab

Analytical Chemistry Lab



6899 Pecos Street, Unit C  
Denver, Colorado 80221

CLIENT: Kerr-McGee Oil & Gas Onshore LP

LOGGED BY: Eric Siegel

PROJECT MANAGER: Robert Cornez

DRILLING CONTRACTOR: Tasman Geosciences, Inc.

DRILLING EQUIPMENT: AMS Powerprobe 9300-SK

DRILL BIT SIZE (INCHES): 2.375"

DATE STARTED - COMPLETED: 11/10/2014

TOTAL WELL DEPTH (FT. BGS): 8

DEPTH TO WATER (FT. BGS): 6.08 (11/20/14) ▼

## Howard 25C-22HZ Production Facility

BORING / WELL ID: BH02

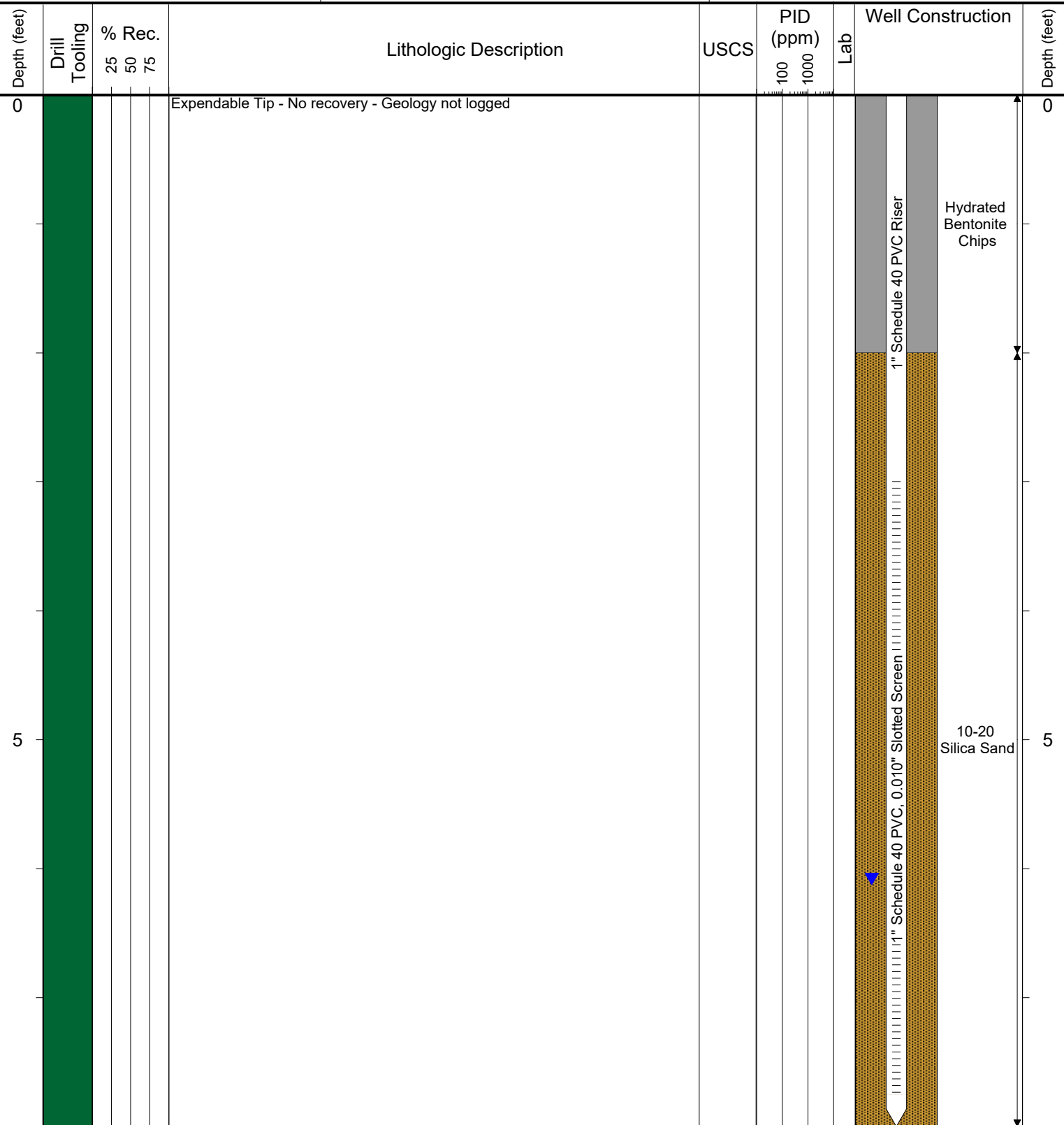
COMPLETION: Flush Mount

LATITUDE (WGS 1984): 40.01783184

LONGITUDE (WGS 1984): -104.8702336

CASING ELEVATION (FT. AMSL): 5053.9

GROUND ELEVATION (FT. AMSL): 5054.15



### Drilling / Sample Method:

Macro-Core

Hand Auger

CME Core Barrel

Expendable Well Tip

Hydrovac

### Laboratory Sample Types:

Geotechnical Lab

Analytical Chemistry Lab



6899 Pecos Street, Unit C  
Denver, Colorado 80221

CLIENT: Kerr-McGee Oil & Gas Onshore LP

LOGGED BY: Eric Siegel

PROJECT MANAGER: Robert Cornez

DRILLING CONTRACTOR: Tasman Geosciences, Inc.

DRILLING EQUIPMENT: AMS Powerprobe 9300-SK

DRILL BIT SIZE (INCHES): 2.375"

DATE STARTED - COMPLETED: 11/10/2014

TOTAL WELL DEPTH (FT. BGS): 7.5

DEPTH TO WATER (FT. BGS): 6.42 (11/20/14) ▼

## Howard 25C-22HZ Production Facility

BORING / WELL ID: BH03

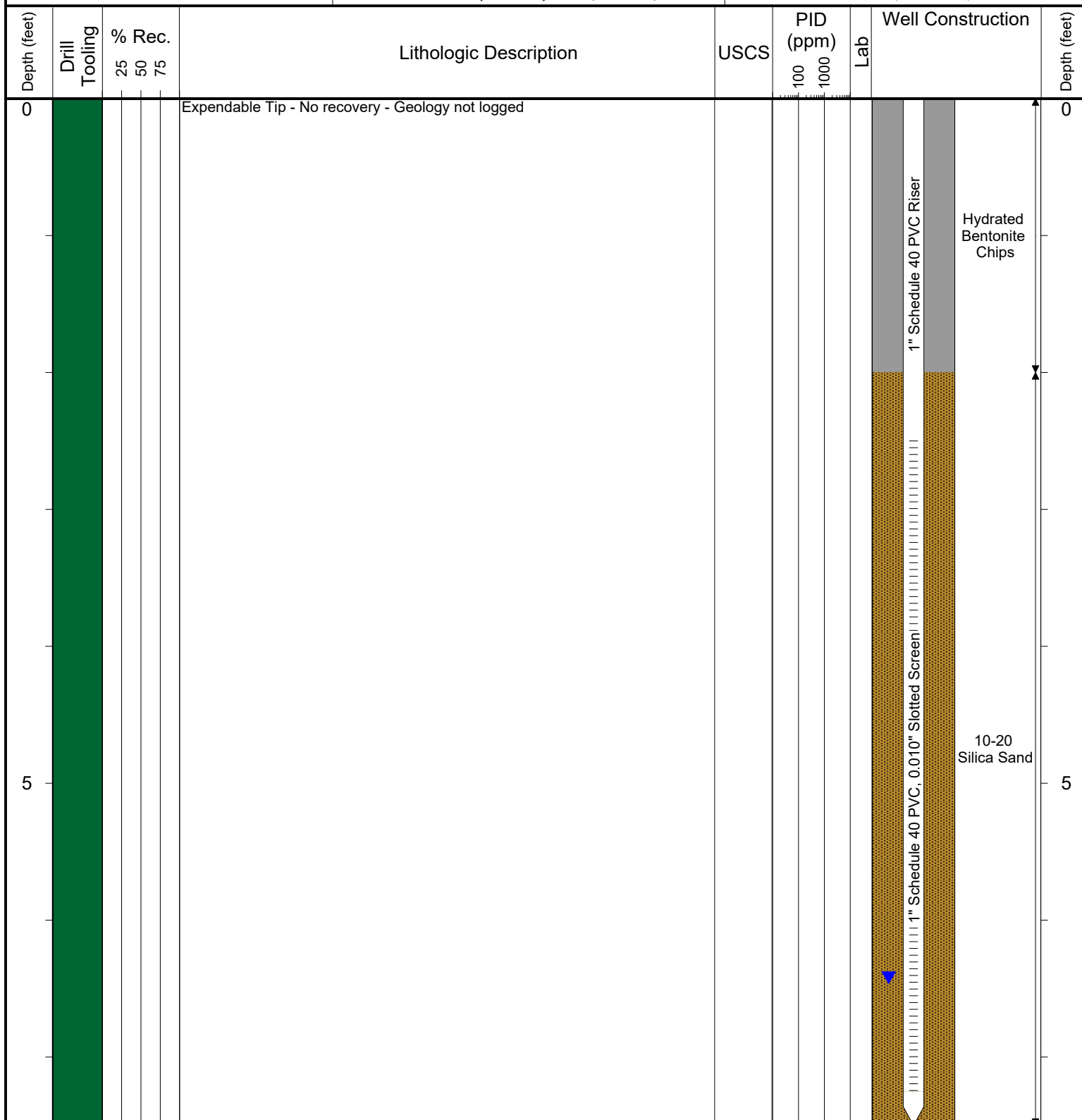
COMPLETION: Flush Mount

LATITUDE (WGS 1984): 40.01784194

LONGITUDE (WGS 1984): -104.870343

CASING ELEVATION (FT. AMSL): 5051.55

GROUND ELEVATION (FT. AMSL): 5051.73



**Drilling / Sample Method:**

- Macro-Core
- Hand Auger
- Expendable Well Tip
- Hydrovac
- CME Core Barrel

**Laboratory Sample Types:**

- Geotechnical Lab
- Analytical Chemistry Lab



6899 Pecos Street, Unit C  
Denver, Colorado 80221

CLIENT: Kerr-McGee Oil & Gas Onshore LP

LOGGED BY: Tyler Blessing

PROJECT MANAGER: Robert Cornez

DRILLING CONTRACTOR: Tasman Geosciences, Inc.

DRILLING EQUIPMENT: AMS Powerprobe 9300-SK

DRILL BIT SIZE (INCHES): 2.375"

DATE STARTED - COMPLETED: 6/16/2016

TOTAL WELL DEPTH (FT. BGS): 11

DEPTH TO WATER (FT. BGS): 4.42 (6/30/16) ▼

## Howard 25C-22HZ Production Facility

BORING / WELL ID: BH04

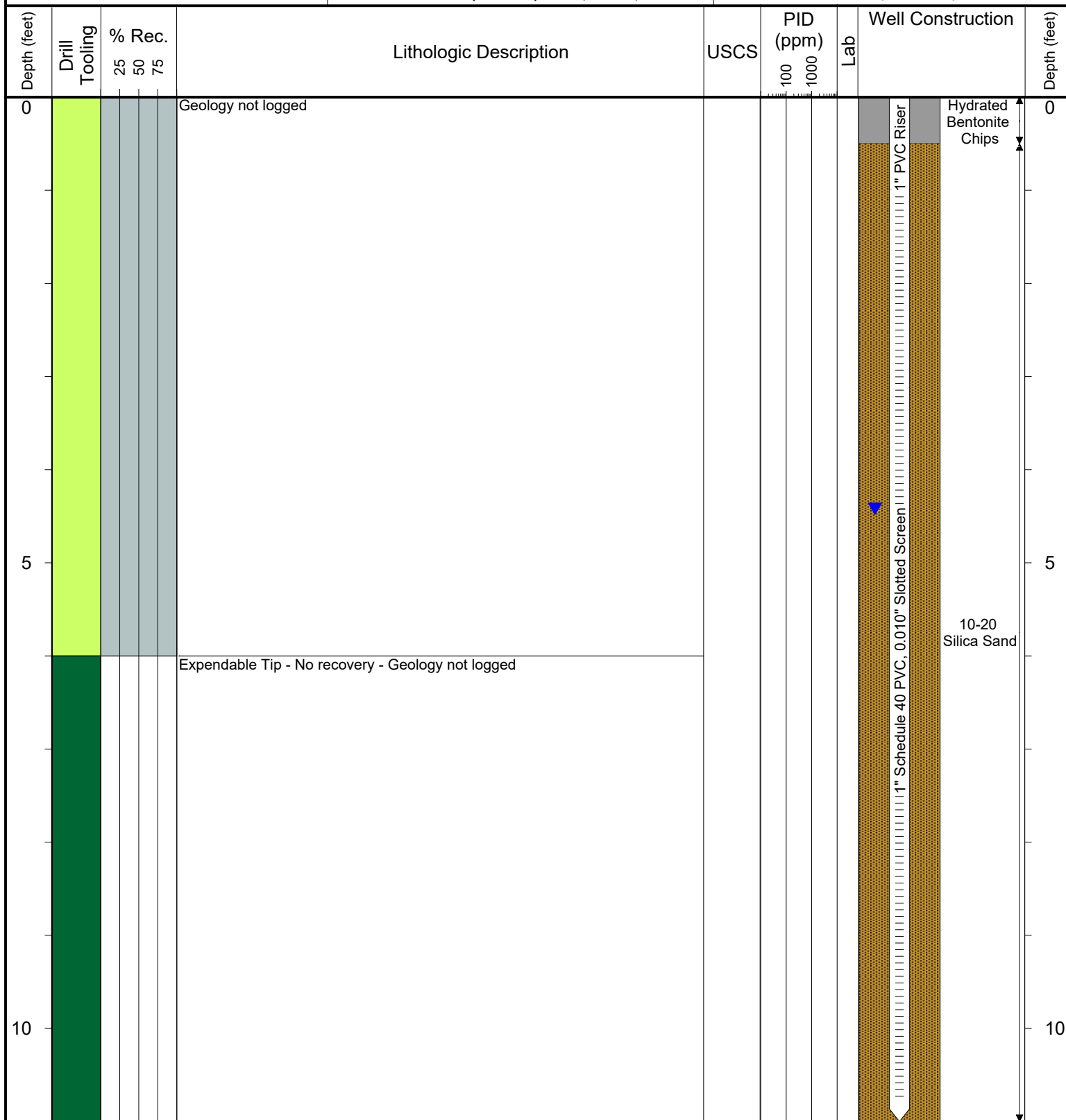
COMPLETION: Flush Mount

LATITUDE (WGS 1984): 40.017685716

LONGITUDE (WGS 1984): -104.8703954

CASING ELEVATION (FT. AMSL): 5050.98

GROUND ELEVATION (FT. AMSL): 5051.27



### Drilling / Sample Method:

Macro-Core

Hand Auger

CME Core Barrel

Expendable Well Tip

Hydrovac

### Laboratory Sample Types:

Geotechnical Lab

Analytical Chemistry Lab



6899 Pecos Street, Unit C  
Denver, Colorado 80221

CLIENT: Kerr-McGee Oil & Gas Onshore LP

LOGGED BY: Tyler Blessing

PROJECT MANAGER: Robert Cornez

DRILLING CONTRACTOR: Tasman Geosciences, Inc.

DRILLING EQUIPMENT: AMS Powerprobe 9300-SK

DRILL BIT SIZE (INCHES): 2.375"

DATE STARTED - COMPLETED: 6/16/2016

TOTAL WELL DEPTH (FT. BGS): 11

DEPTH TO WATER (FT. BGS): 9.85 (6/30/16) ▼

## Howard 25C-22HZ Production Facility

BORING / WELL ID: BH05

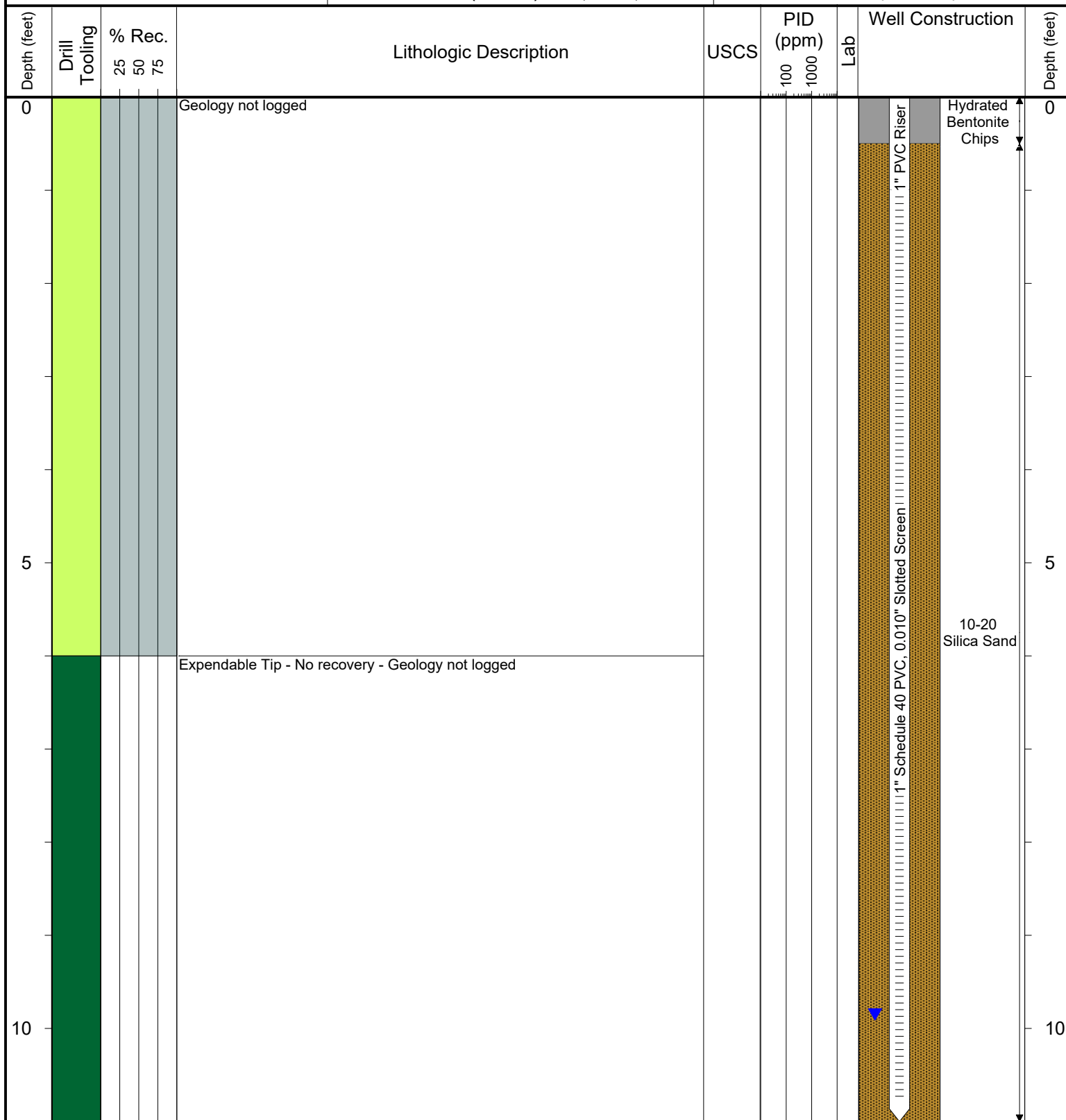
COMPLETION: Flush Mount

LATITUDE (WGS 1984): 40.01768355

LONGITUDE (WGS 1984): -104.8705366

CASING ELEVATION (FT. AMSL): 5049.43

GROUND ELEVATION (FT. AMSL): 5049.7



### Drilling / Sample Method:

Macro-Core

Hand Auger

CME Core Barrel

Expendable Well Tip

Hydrovac

### Laboratory Sample Types:

Geotechnical Lab

Analytical Chemistry Lab



6899 Pecos Street, Unit C  
Denver, Colorado 80221

CLIENT: Kerr-McGee Oil & Gas Onshore LP

LOGGED BY: Tyler Blessing

PROJECT MANAGER: Robert Cornez

DRILLING CONTRACTOR: Tasman Geosciences, Inc.

DRILLING EQUIPMENT: AMS Powerprobe 9300-SK

DRILL BIT SIZE (INCHES): 2.375"

DATE STARTED - COMPLETED: 6/16/2016

TOTAL WELL DEPTH (FT. BGS): 11

DEPTH TO WATER (FT. BGS): 4.91 (6/30/16) ▼

## Howard 25C-22HZ Production Facility

BORING / WELL ID: BH06

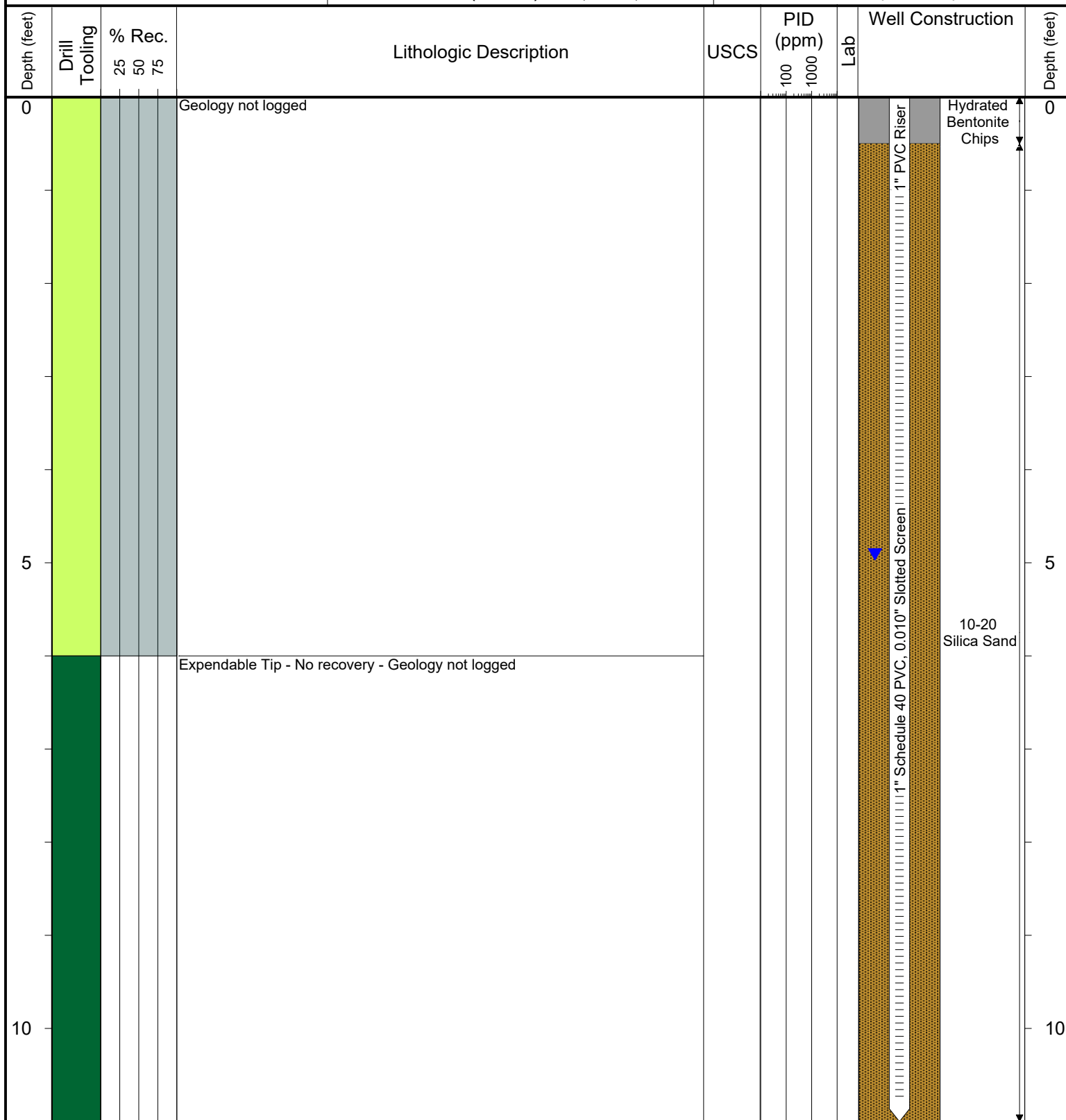
COMPLETION: Flush Mount

LATITUDE (WGS 1984): 40.017753061

LONGITUDE (WGS 1984): -104.87058518

CASING ELEVATION (FT. AMSL): 5048.1

GROUND ELEVATION (FT. AMSL): 5048.44



### Drilling / Sample Method:

Macro-Core

Hand Auger

CME Core Barrel

Expendable Well Tip

Hydrovac

### Laboratory Sample Types:

Geotechnical Lab

Analytical Chemistry Lab



6899 Pecos Street, Unit C  
Denver, Colorado 80221

CLIENT: Kerr-McGee Oil & Gas Onshore LP

LOGGED BY: Tyler Blessing

PROJECT MANAGER: Robert Cornez

DRILLING CONTRACTOR: Tasman Geosciences, Inc.

DRILLING EQUIPMENT: AMS Powerprobe 9300-SK

DRILL BIT SIZE (INCHES): 2.375"

DATE STARTED - COMPLETED: 6/16/2016

TOTAL WELL DEPTH (FT. BGS): 11

DEPTH TO WATER (FT. BGS): 6.31 (6/30/16) ▼

## Howard 25C-22HZ Production Facility

BORING / WELL ID: BH07 - Abandoned

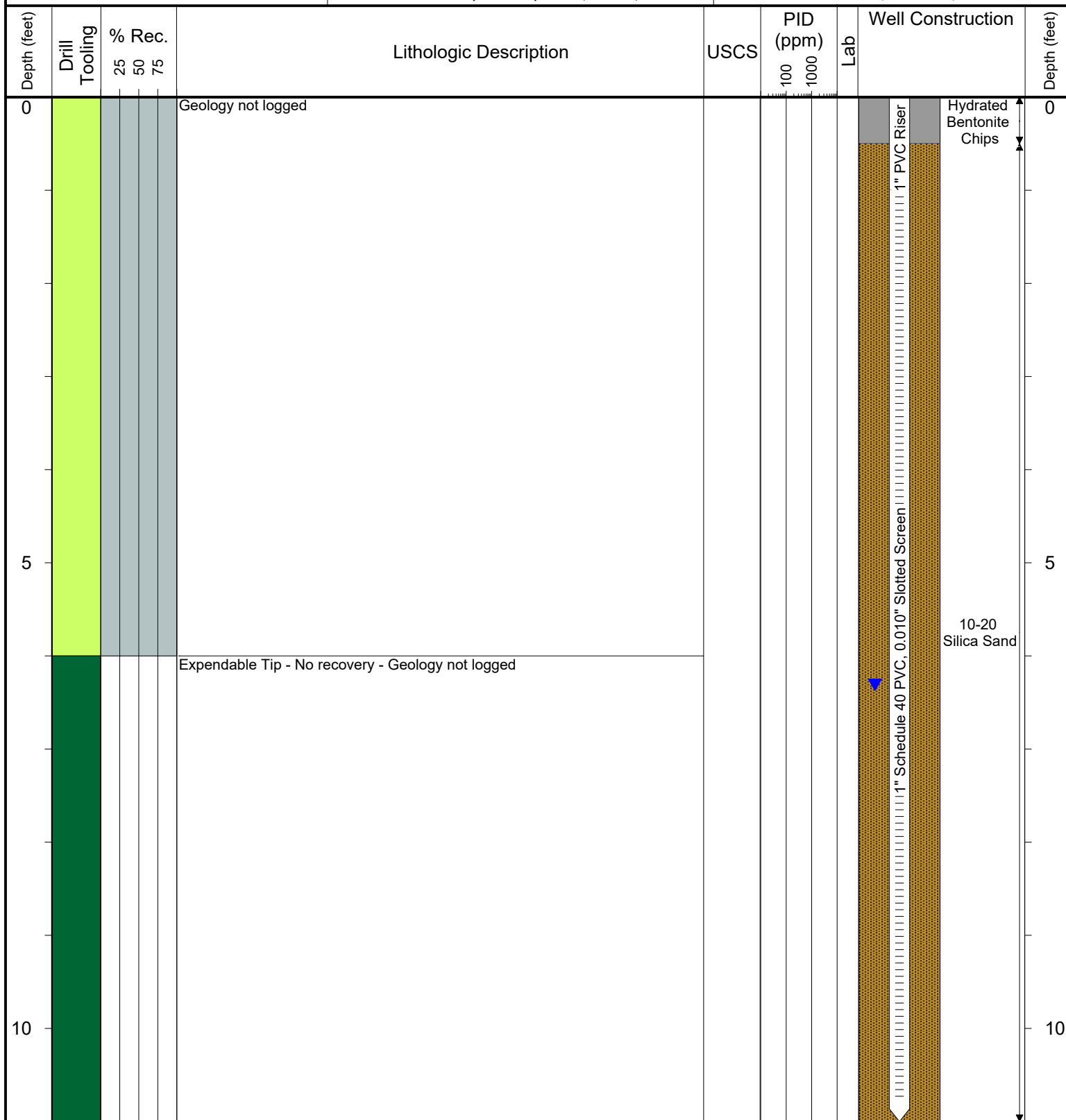
COMPLETION: Flush Mount

LATITUDE (WGS 1984): 40.017806616

LONGITUDE (WGS 1984): -104.87049385

CASING ELEVATION (FT. AMSL): 5049.36

GROUND ELEVATION (FT. AMSL): 5049.6



### Drilling / Sample Method:

Macro-Core

Hand Auger

CME Core Barrel

Expendable Well Tip

Hydrovac

### Laboratory Sample Types:

Geotechnical Lab

Analytical Chemistry Lab



6899 Pecos Street, Unit C  
Denver, Colorado 80221

CLIENT: Kerr-McGee Oil & Gas Onshore LP

LOGGED BY: Eric Siegel, P.G.

PROJECT MANAGER: Robert Cornez

DRILLING CONTRACTOR: Tasman Geosciences, Inc.

DRILLING EQUIPMENT: AMS Powerprobe 9300-SK

DRILL BIT SIZE (INCHES): 2.375"

DATE STARTED - COMPLETED: 3/28/2017

TOTAL WELL DEPTH (FT. BGS): 16

DEPTH TO WATER (FT. BGS): 15.39 (6/2/17) ▼

## Howard 25C-22HZ Production Facility

BORING / WELL ID: BH07R - Abandoned

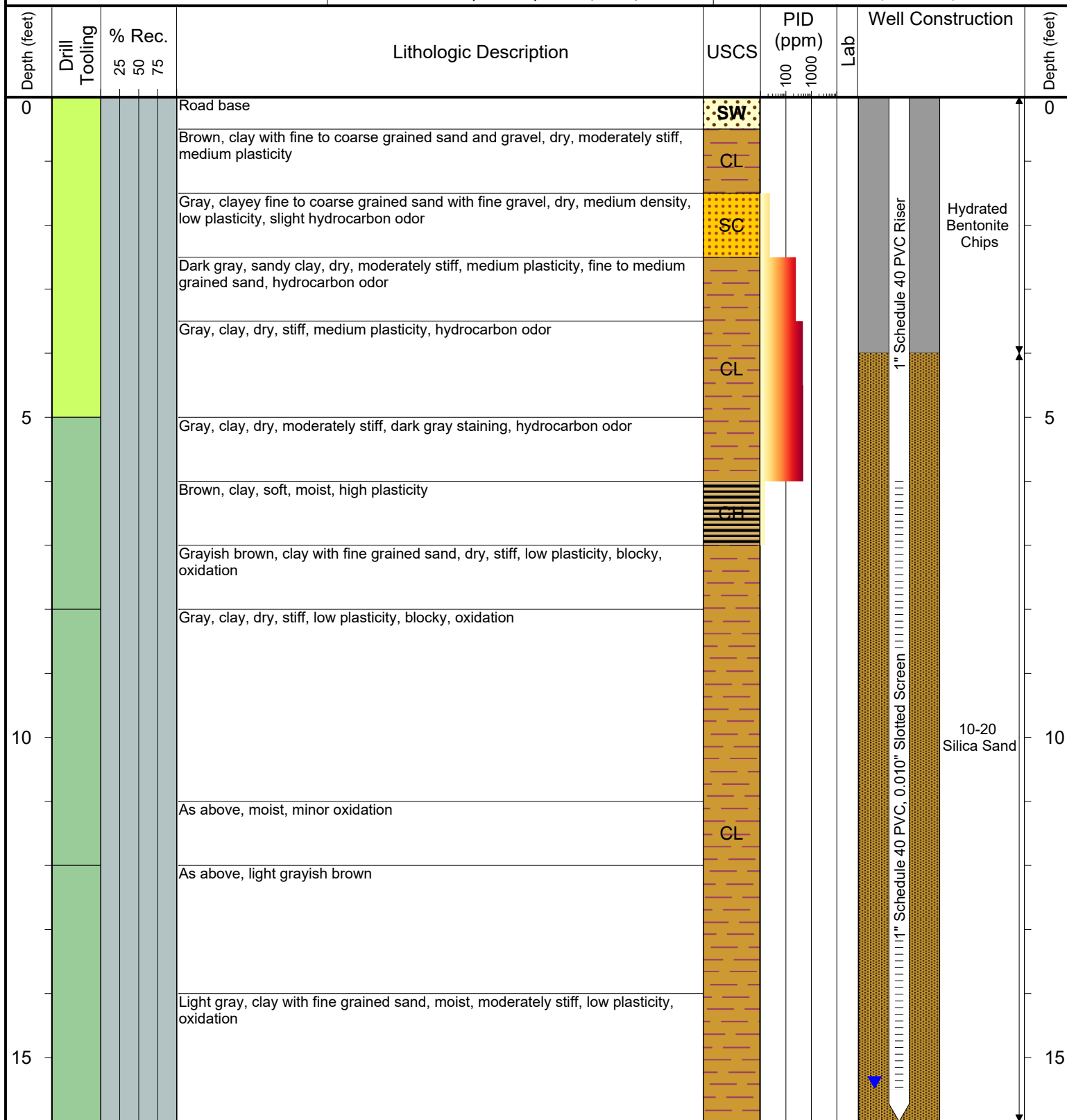
COMPLETION: Flush Mount

LATITUDE (WGS 1984): 40.017806623

LONGITUDE (WGS 1984): -104.870502

CASING ELEVATION (FT. AMSL): 5049.12

GROUND ELEVATION (FT. AMSL): 5049.43



### Drilling / Sample Method:

Macro-Core      Hand Auger      CME Core Barrel  
Expendable Well Tip      Hydrovac

### Laboratory Sample Types:

Geotechnical Lab  
Analytical Chemistry Lab





6899 Pecos Street, Unit C  
Denver, Colorado 80221

CLIENT: Kerr-McGee Oil & Gas Onshore LP

LOGGED BY: Eric Siegel, P.G.

PROJECT MANAGER: Robert Cornez

DRILLING CONTRACTOR: Site Services Drilling, LLC

DRILLING EQUIPMENT: CME 75

DRILL BIT SIZE (INCHES): 8"

DATE STARTED - COMPLETED: 4/23/2018

TOTAL WELL DEPTH (FT. BGS): 23.5

DEPTH TO WATER (FT. BGS): 21.75 (5/25/18) ▼

## Howard 25C-22HZ Production Facility

BORING / WELL ID: BH07R2

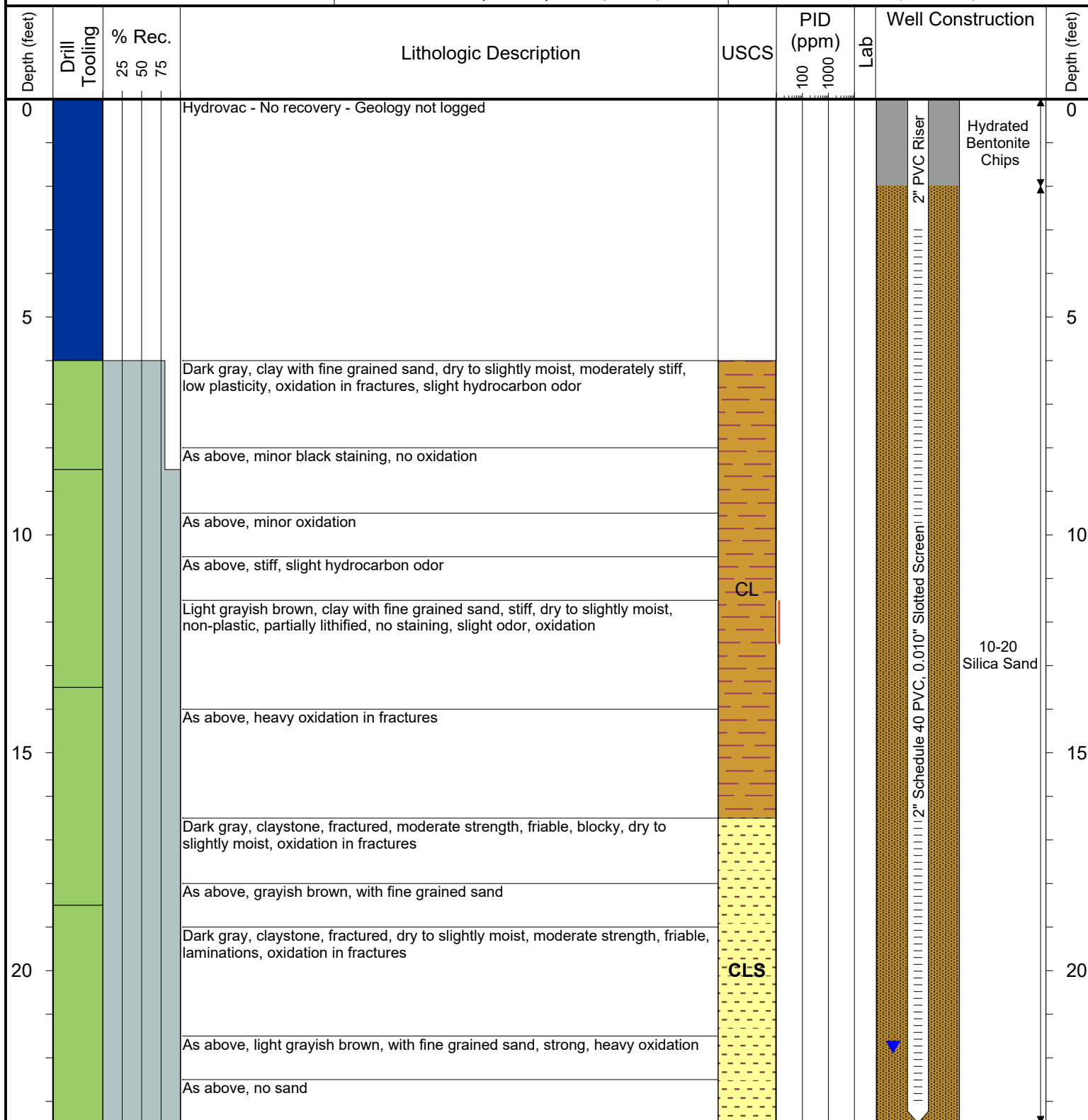
COMPLETION: Flush Mount

LATITUDE (WGS 1984): 40.0178

LONGITUDE (WGS 1984): -104.870492

CASING ELEVATION (FT. AMSL): 5049.33

GROUND ELEVATION (FT. AMSL): 5049.73



### Drilling / Sample Method:

Macro-Core Hand Auger CME Core Barrel  
 Expendable Well Tip Hydrovac

### Laboratory Sample Types:

Geotechnical Lab Analytical Chemistry Lab



6899 Pecos Street, Unit C  
Denver, Colorado 80221

CLIENT: Kerr-McGee Oil & Gas Onshore LP

LOGGED BY: Tyler Blessing

PROJECT MANAGER: Robert Cornez

DRILLING CONTRACTOR: Tasman Geosciences, Inc.

DRILLING EQUIPMENT: AMS Powerprobe 9300-SK

DRILL BIT SIZE (INCHES): 2.375"

DATE STARTED - COMPLETED: 6/16/2016

TOTAL WELL DEPTH (FT. BGS): 11

DEPTH TO WATER (FT. BGS): 7.5 (6/30/16) ▼

## Howard 25C-22HZ Production Facility

BORING / WELL ID: BH08

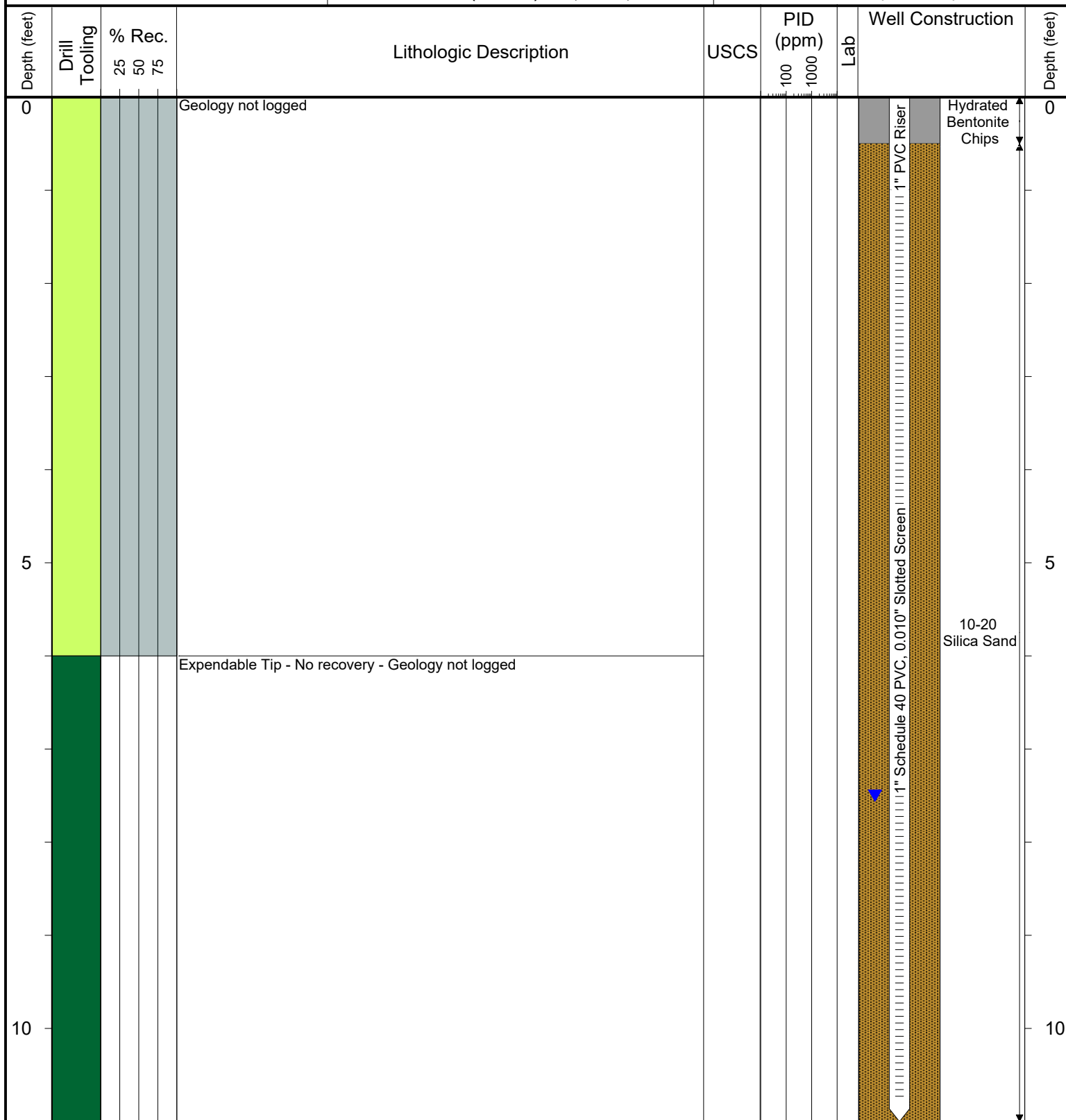
COMPLETION: Flush Mount

LATITUDE (WGS 1984): 40.017746594

LONGITUDE (WGS 1984): -104.87045676

CASING ELEVATION (FT. AMSL): 5049.86

GROUND ELEVATION (FT. AMSL): 5050.25



### Drilling / Sample Method:

Macro-Core

Hand Auger

CME Core Barrel

Expendable Well Tip

Hydrovac

### Laboratory Sample Types:

Geotechnical Lab

Analytical Chemistry Lab



6899 Pecos Street, Unit C  
Denver, Colorado 80221

CLIENT: Kerr-McGee Oil & Gas Onshore LP

LOGGED BY: Eric Siegel, P.G.

PROJECT MANAGER: Robert Cornez

DRILLING CONTRACTOR: Tasman Geosciences, Inc.

DRILLING EQUIPMENT: AMS Powerprobe 9300-SK

DRILL BIT SIZE (INCHES): 2.375"

DATE STARTED - COMPLETED: 3/28/2017

TOTAL WELL DEPTH (FT. BGS): 16

DEPTH TO WATER (FT. BGS): 13.37 (6/2/17) ▼

## Howard 25C-22HZ Production Facility

BORING / WELL ID: BH09 - Abandoned

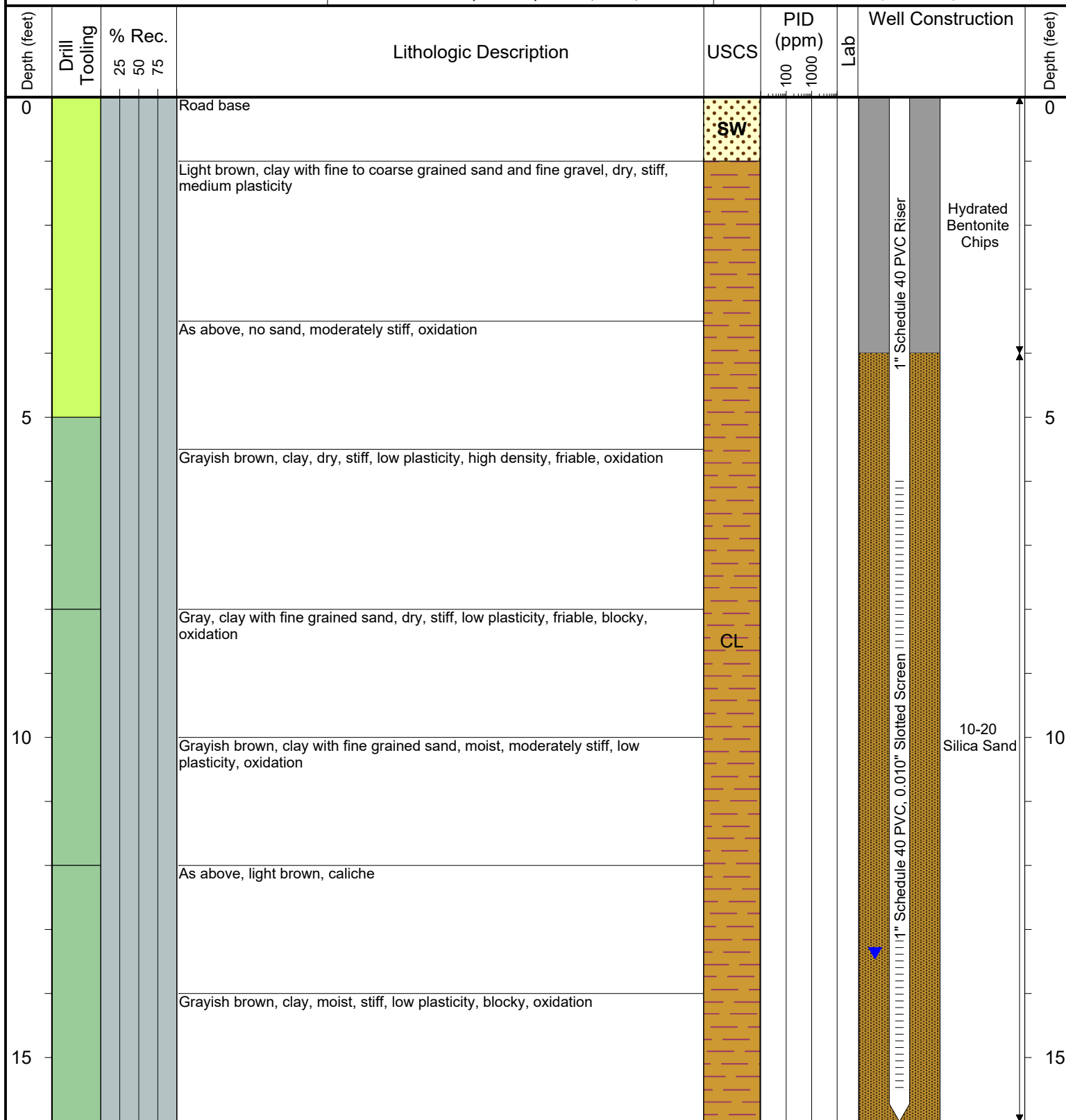
COMPLETION: Stick Up - 3.75'

LATITUDE (WGS 1984): 40.01783697

LONGITUDE (WGS 1984): -104.870545

CASING ELEVATION (FT. AMSL): 5052.22

GROUND ELEVATION (FT. AMSL): 5048.47



### Drilling / Sample Method:

Macro-Core Hand Auger CME Core Barrel  
 Expendable Well Tip Hydrovac

### Laboratory Sample Types:

Geotechnical Lab  
 Analytical Chemistry Lab



6899 Pecos Street, Unit C  
Denver, Colorado 80221

CLIENT: Kerr-McGee Oil & Gas Onshore LP

LOGGED BY: Eric Siegel, P.G.

PROJECT MANAGER: Robert Cornez

DRILLING CONTRACTOR: Site Services Drilling, LLC

DRILLING EQUIPMENT: CME 75

DRILL BIT SIZE (INCHES): 8"

DATE STARTED - COMPLETED: 4/23/2018

TOTAL WELL DEPTH (FT. BGS): 24

DEPTH TO WATER (FT. BGS): 21.68 (5/25/18) ▼

## Howard 25C-22HZ Production Facility

BORING / WELL ID: BH09R

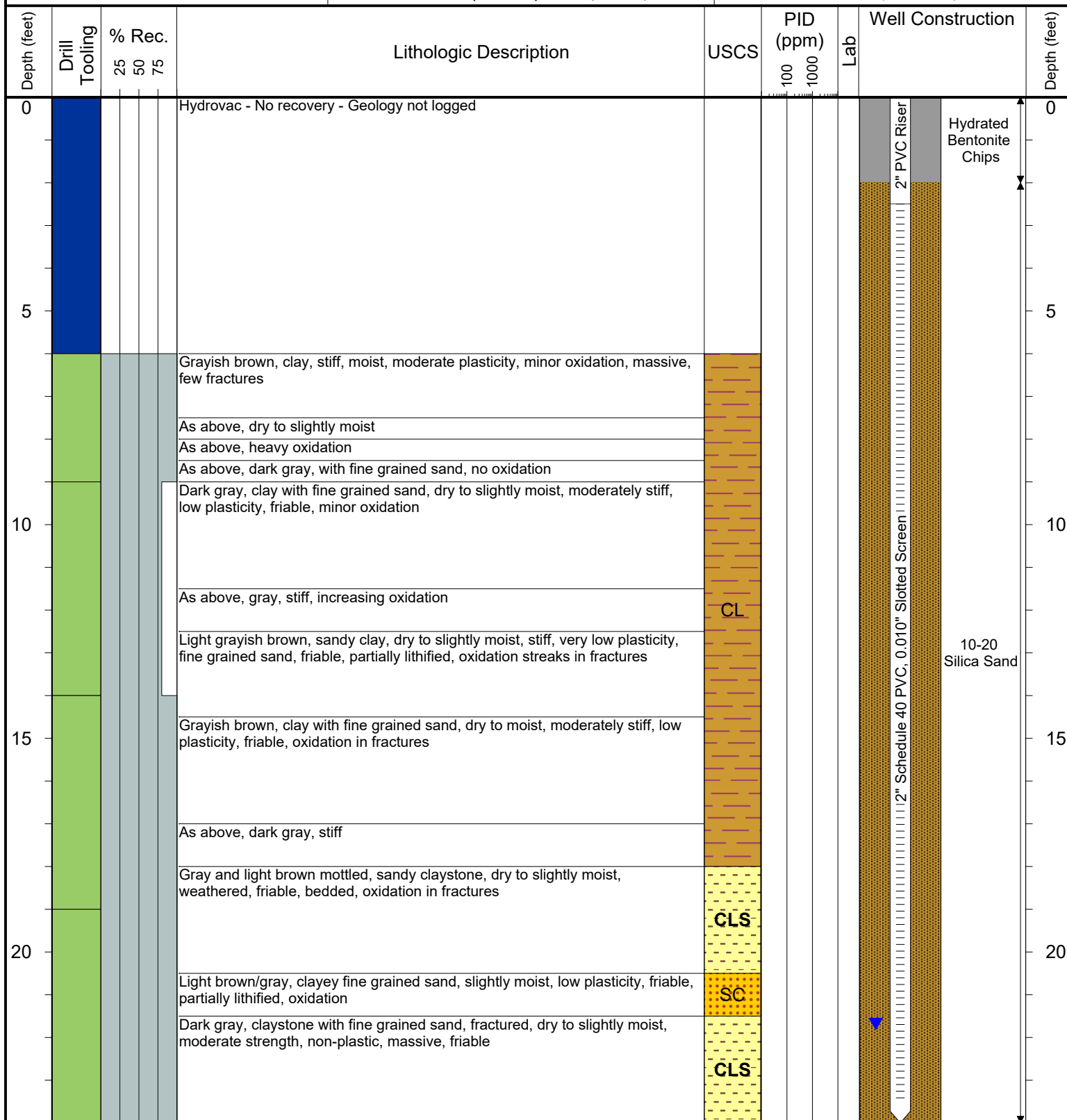
COMPLETION: Flush Mount

LATITUDE (WGS 1984): 40.017836

LONGITUDE (WGS 1984): -104.870506

CASING ELEVATION (FT. AMSL): 5048.51

GROUND ELEVATION (FT. AMSL): 5049



### Drilling / Sample Method:

Macro-Core      Hand Auger      CME Core Barrel  
Expendable Well Tip      Hydrovac

### Laboratory Sample Types:

Geotechnical Lab  
Analytical Chemistry Lab



6899 Pecos Street, Unit C  
Denver, Colorado 80221

CLIENT: Kerr-McGee Oil & Gas Onshore LP

LOGGED BY: Eric Siegel, P.G.

PROJECT MANAGER: Robert Cornez

DRILLING CONTRACTOR: Tasman Geosciences, Inc.

DRILLING EQUIPMENT: AMS Powerprobe 9300-SK

DRILL BIT SIZE (INCHES): 2.375"

DATE STARTED - COMPLETED: 3/28/2017

TOTAL WELL DEPTH (FT. BGS): 16

DEPTH TO WATER (FT. BGS): 15.26 (12/6/17) ▼

## Howard 25C-22HZ Production Facility

BORING / WELL ID: BH10 - Abandoned

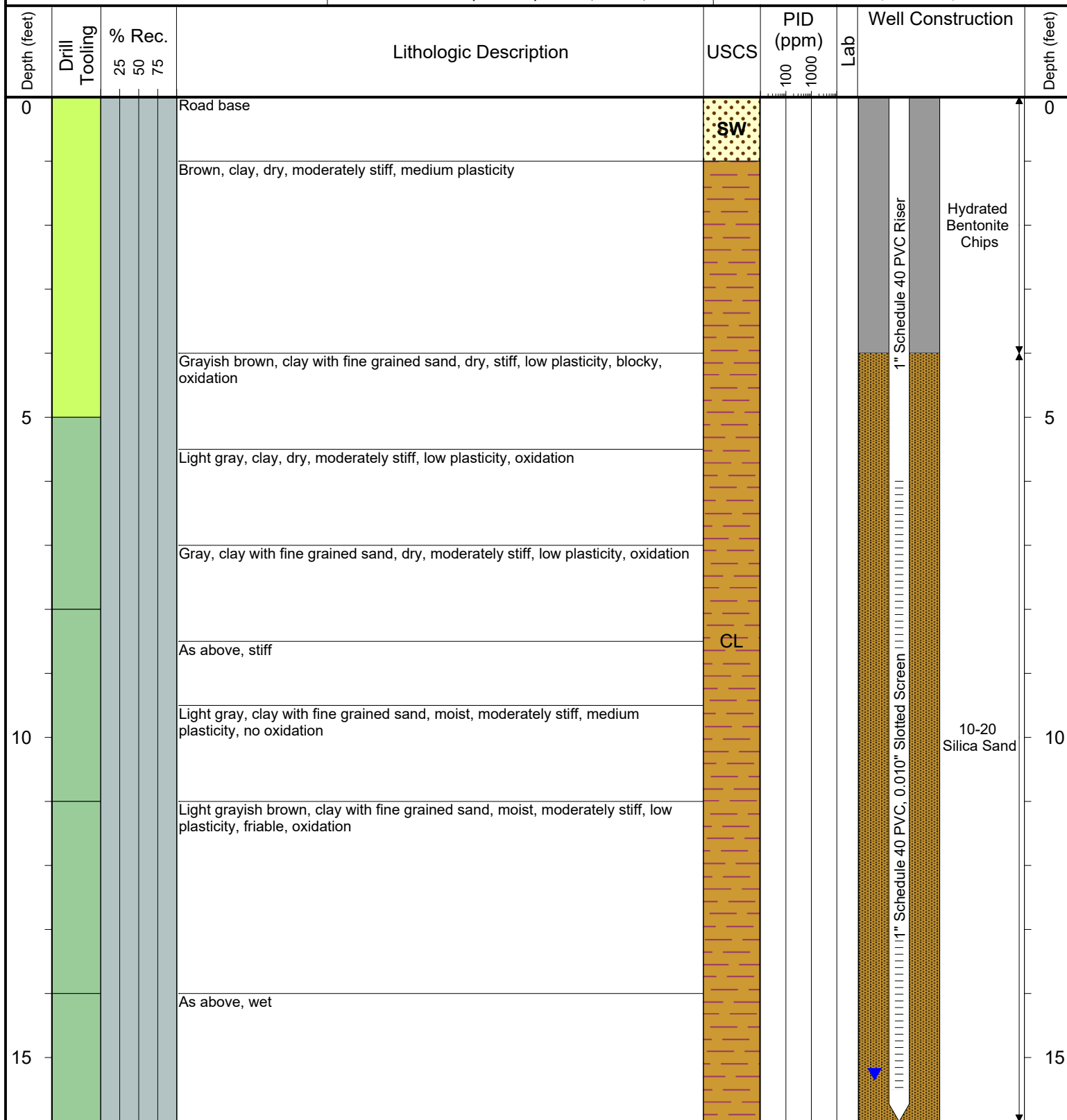
COMPLETION: Stick Up - 3.92'

LATITUDE (WGS 1984): 40.017816991

LONGITUDE (WGS 1984): -104.87059803

CASING ELEVATION (FT. AMSL): 5051.33

GROUND ELEVATION (FT. AMSL): 5047.41



### Drilling / Sample Method:

Macro-Core

Hand Auger

CME Core Barrel

Expendable Well Tip

Hydrovac

### Laboratory Sample Types:

Geotechnical Lab

Analytical Chemistry Lab



6899 Pecos Street, Unit C  
Denver, Colorado 80221

CLIENT: Kerr-McGee Oil & Gas Onshore LP

LOGGED BY: Eric Siegel, P.G.

PROJECT MANAGER: Robert Cornez

DRILLING CONTRACTOR: Site Services Drilling, LLC

DRILLING EQUIPMENT: CME 75

DRILL BIT SIZE (INCHES): 8"

DATE STARTED - COMPLETED: 4/23/2018

TOTAL WELL DEPTH (FT. BGS): 23.5

DEPTH TO WATER (FT. BGS): 15.15 (5/25/18) ▼

## Howard 25C-22HZ Production Facility

BORING / WELL ID: BH10R

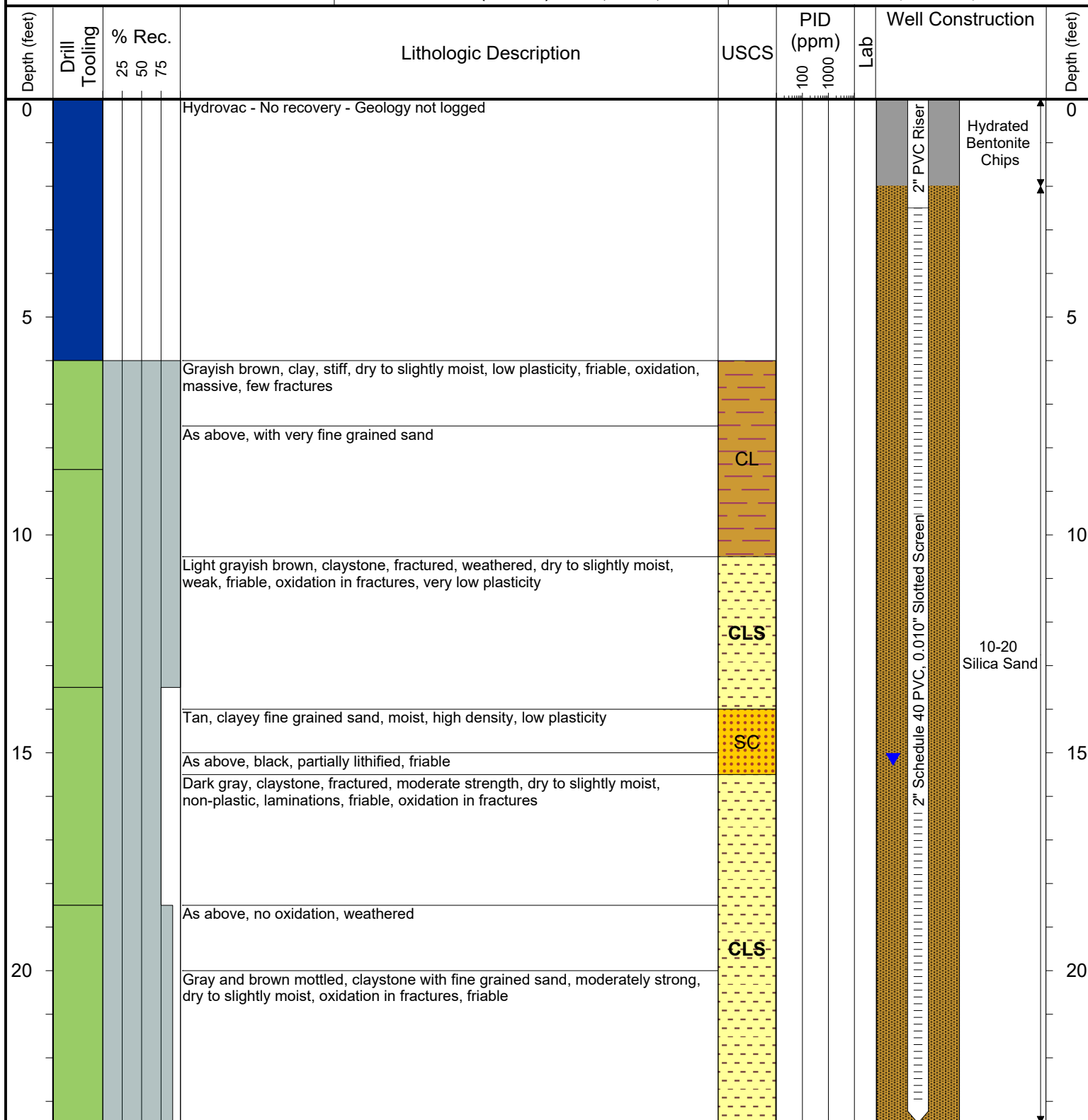
COMPLETION: Flush Mount

LATITUDE (WGS 1984): 40.017819

LONGITUDE (WGS 1984): -104.870603

CASING ELEVATION (FT. AMSL): 5047.26

GROUND ELEVATION (FT. AMSL): 5047.7



### Drilling / Sample Method:

Macro-Core Hand Auger CME Core Barrel  
 Expendable Well Tip Hydrovac

### Laboratory Sample Types:

Geotechnical Lab  
 Analytical Chemistry Lab



6899 Pecos Street, Unit C  
Denver, Colorado 80221

CLIENT: Kerr-McGee Oil & Gas Onshore LP

LOGGED BY: Eric Siegel, P.G.

PROJECT MANAGER: Robert Cornez

DRILLING CONTRACTOR: Site Services Drilling, LLC

DRILLING EQUIPMENT: CME 75

DRILL BIT SIZE (INCHES): 8"

DATE STARTED - COMPLETED: 4/23/2018

TOTAL WELL DEPTH (FT. BGS): 24

DEPTH TO WATER (FT. BGS): 21.14 (5/25/18) ▼

## Howard 25C-22HZ Production Facility

BORING / WELL ID: BH11

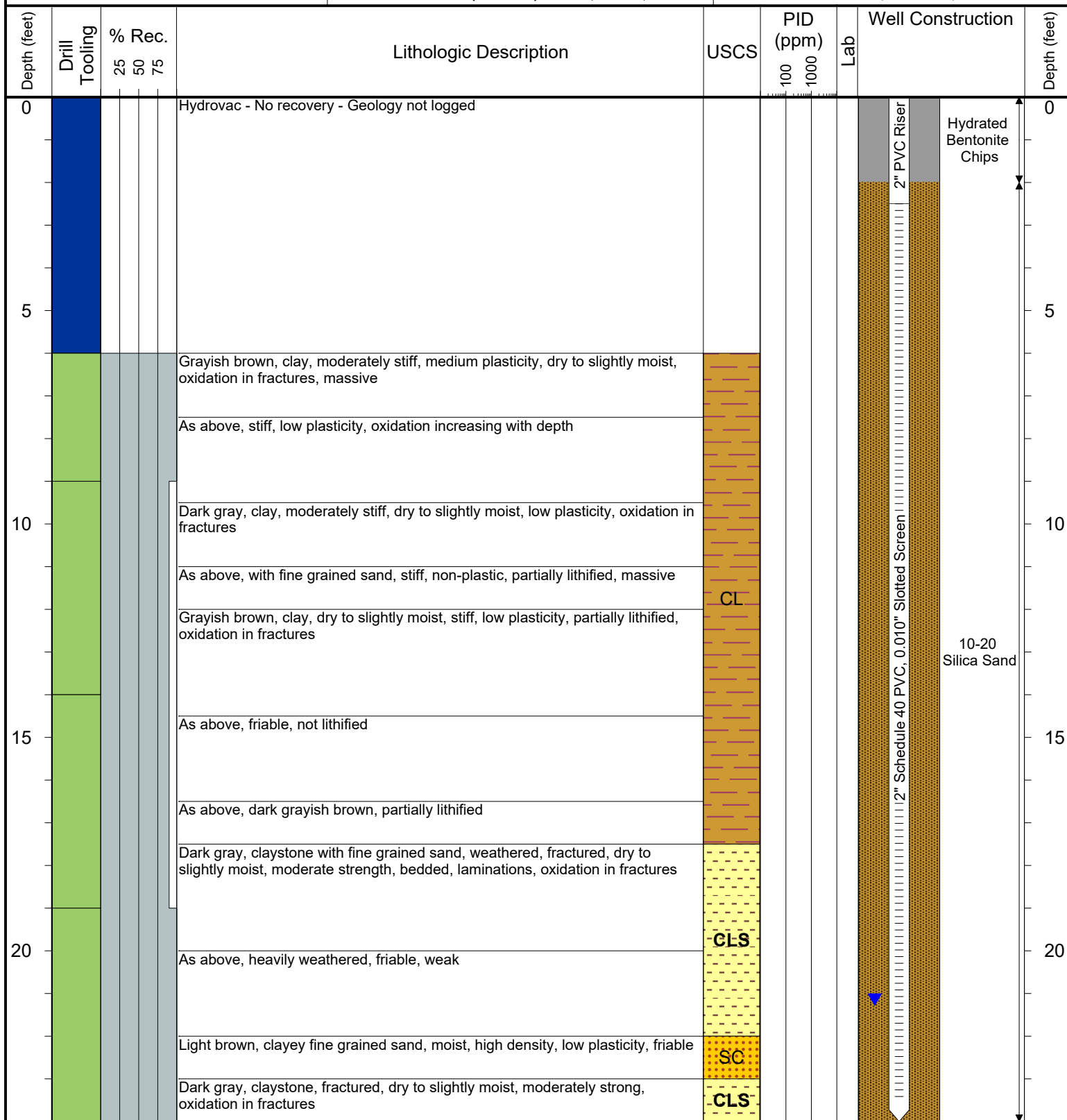
COMPLETION: Flush Mount

LATITUDE (WGS 1984): 40.017865

LONGITUDE (WGS 1984): -104.870483

CASING ELEVATION (FT. AMSL): 5049.31

GROUND ELEVATION (FT. AMSL): 5049.73



### Drilling / Sample Method:

- Macro-Core
- Hand Auger
- CME Core Barrel
- Expendable Well Tip
- Hydrovac

### Laboratory Sample Types:

- Geotechnical Lab
- Analytical Chemistry Lab