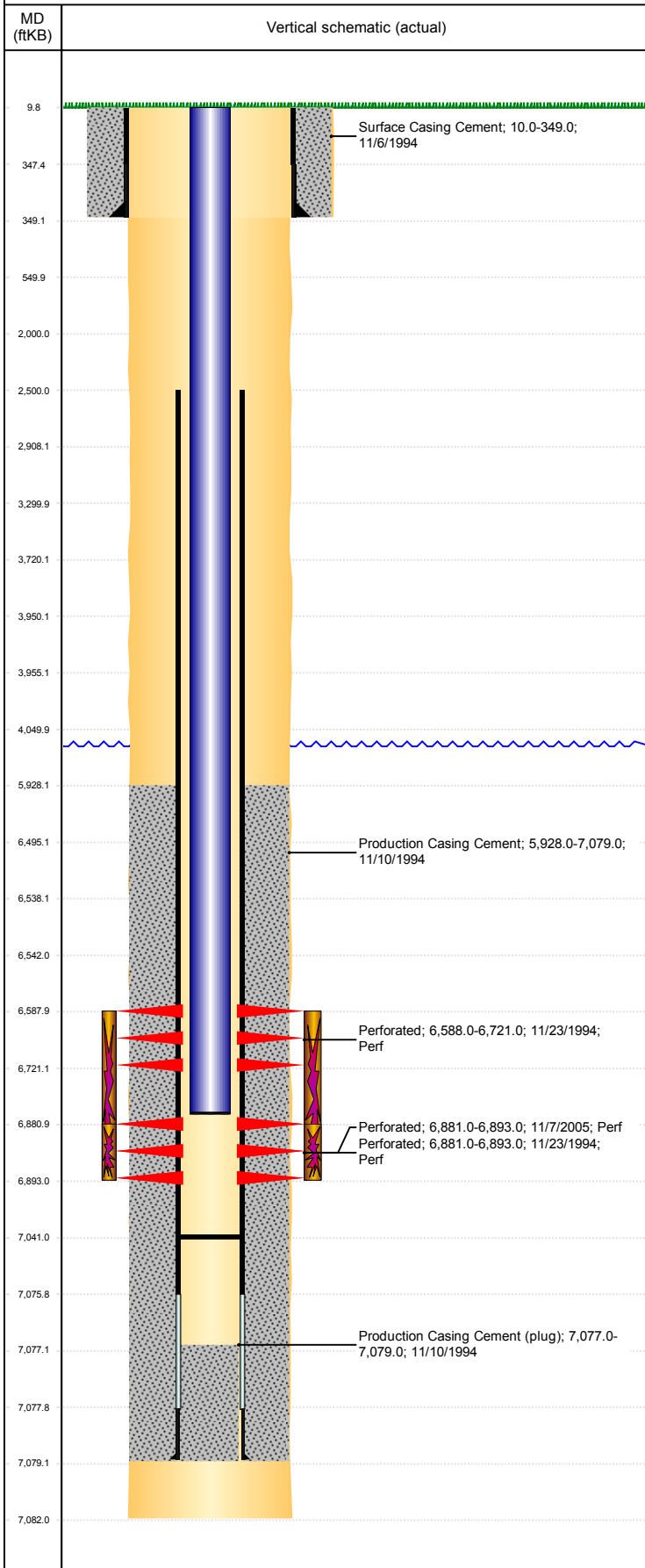


Well Name: JOHNSON A32-06

VERTICAL, ORIGINAL HOLE, 5/1/2019 11:54:41 AM



Well Header									
API 05-123-18645		Business Unit DJ BASIN			District 15		Well Config VERTICAL		
KB - GL / MSL (ft... 10.00		Spud Date 11/6/1994		P & A Date		Well Production Status PR			SoRT No
Comment PROD CSG DISCREPANCY: DRL RPT=9.2# & 9.3#, ST CMP=7.7#									
Surface Location (Congressional)									
Qtr 3 SE	Qtr 4 NW	Section 32	Twonshp 6	Twonsh... N	Range 64	Rng E/... W	Actual Latitude (°) 40.44381505	Actual Longitude (°) -104.57583416	
Wellbore Sections									
Section Des			Size (in)			Act Top, MD (ftKB)		Act Btm, MD (ftKB)	
SURFACE			12 1/4			10		349	
PRODUCTION			7 7/8			349		7,082	
Casing Strings									
Csg Des			Run Date		OD (in)	Wt/Len (lb/ft)	Grade	Top, MD (ftKB)	MD (ftKB)
Surface			11/6/1994		8 5/8	24.00		10.0	349.0
Production			11/10/1994		3 1/2	9.20	N-80	10.0	7,079.0
Cement									
Des					Start Date		Top (ftKB)		Btm (ftKB)
Surface Casing Cement					11/6/1994		10.0		349.0
Production Casing Cement					11/10/1994		5,928.0		7,079.1
Zone Statuses									
Zone Name	Status Date	Status	Fluid Type	Job				Prod Method	
CODELL	1/5/2006	PR	Water	RE-FRAC, 11/4/2005 00:00				Flowing Flowing	
CODELL	3/5/2010	PR							
NIOBRARA	3/5/2010	PR							
NIOBRARA	2/13/2016	PR							
Perforation Data									
Linked Zone		Bnch/Stg	Entered Shot Total	Top (ftKB)		Btm (ftKB)		Date	
NIOBRARA, ORIGINAL HOLE			7	6,588.00		6,721.00		11/23/1994	
CODELL, ORIGINAL HOLE			48	6,881.00		6,893.00		11/7/2005	
CODELL, ORIGINAL HOLE			14	6,881.00		6,893.00		11/23/1994	
Stimulation Intervals									
Zone				Start Date		Top (ftKB)		Btm (ftKB)	
NIOBRARA-CODELL, ORIGINAL HOLE				11/23/1994		6,588.0		6,893.0	
CODELL, ORIGINAL HOLE				11/16/2005		6,881.0		6,893.0	
Other In Hole									
Run Date		Des				OD (in)	Top (ftKB)	Btm (ftKB)	
Logs									
Date		Type				Top, MD (ftKB)		Btm, MD (ftKB)	
11/9/1994		COMPENSATED DENSITY				3,900.0		7,090.0	
11/9/1994		INDUCTION				3,900.0		7,090.0	
11/22/1994		CBL/CCL/GR				5,750.0		7,009.0	
12/22/2017		GYRO				12.0		6,800.0	
Plug Back Total Depths									
Date		Type		Com				Depth (ftKB)	
11/7/2005		FILL		CLEAN OUT				7,035.0	
11/21/2005		FILL		TAG FILL				7,041.0	