



**RADIAL BOND
GAMMA RAY
CCL**

Company ANADARKO
Well HOWARD 15-29
Field Wattenberg
County WELD State Colorado

Location: SE SE 1090'FSL 1296'FEL
LAT:40.01780
LONG:-104.90950
SEC 29 TWP 1N RGE 67W
API #: 05-123-33736
Permanent Datum KB Elevation 5023'
Log Measured From KB
Drilling Measured From KB
Other Services
K.B. 5038'
D.F. 5038'
G.L. 5023'

Date 2-22-2019
Run Number 1
Depth Driller
Depth Logger
Bottom Logged Interval 1000'
Top Log Interval SURFACE
Open Hole Size 4.5"
Type Fluid WATER
Density / Viscosity 8.6
Max. Recorded Temp. 68.5
Estimated Cement Top 750'
Time Well Ready NA
Time Logger on Bottom NA
Equipment Number 058
Location Windsor, CO
Recorded By TIMMY HAWLEY
Witnessed By LUIS MORALES


Borehole Record				Tubing Record			
Run Number	Bit	From	To	Size	Weight	From	To
Casing Record	Size			Wgt/Ft		Top	Bottom
Surface String	8.63			24#		SURFACE	1208'
Prot. String							
Production String	4.5			11.6#		SURFACE	8445'
Liner							

<<< Fold Here >>>

All interpretations are opinions based on inferences from electrical or other measurements and we cannot and do not guarantee the accuracy or correctness of any interpretation, and we shall not, except in the case of gross or willful negligence on our part, be liable or responsible for any loss, costs, damages, or expenses incurred or sustained by anyone resulting from any interpretation made by any of our officers, agents or employees. These interpretations are also subject to our general terms and conditions set out in our current Price Schedule.

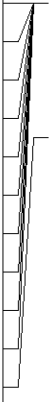
Comments

**RAN CEMENT BOND LOG TO VERIFY CEMENT TOP
THANK YOU FOR USING CUTTERS WIRELINE
Log ran @ 100'/min
. Free pipe calibration @ 60'
Date of shop calibration - 1/10/2019 log ran under OPSI**

Sensor	Offset (ft)	Schematic	Description	Len (ft)	OD (in)	Wt (lb)
						

WVF3FT 9.44
 WVFCAL 9.44
 WVFS1 9.44
 WVFS2 9.44
 WVFS3 9.44
 WVFS4 9.44
 WVFS5 9.44
 WVFS6 9.44
 WVFS7 9.44
 WVFS8 9.44
 WVF5FT 8.44

9.44
 9.44
 9.44
 9.44
 9.44
 9.44
 9.44
 9.44
 9.44
 9.44
 8.44



RBT-Probe (110223)
 Probe 2.75" Radii Bond Tool

8.75 2.75 90.00

CCL 4.75

GR-Probe (060108)
 Probe 2.75" 4 Channel Pulse

4.00 2.75 30.00

GR 2.25

TEMP-1.375TEMP (060110)
 Temperature Tool

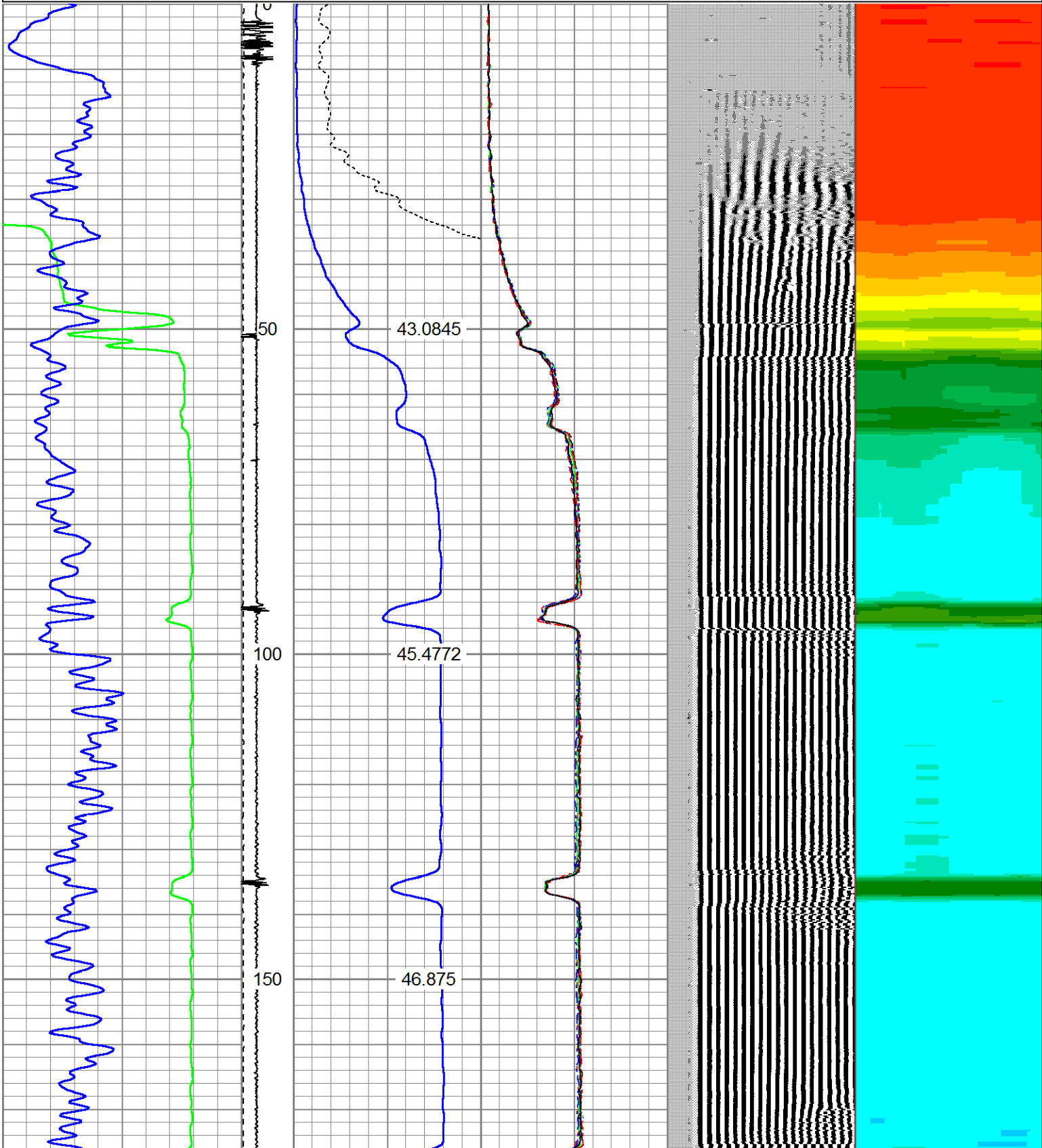
1.25 1.38 30.00

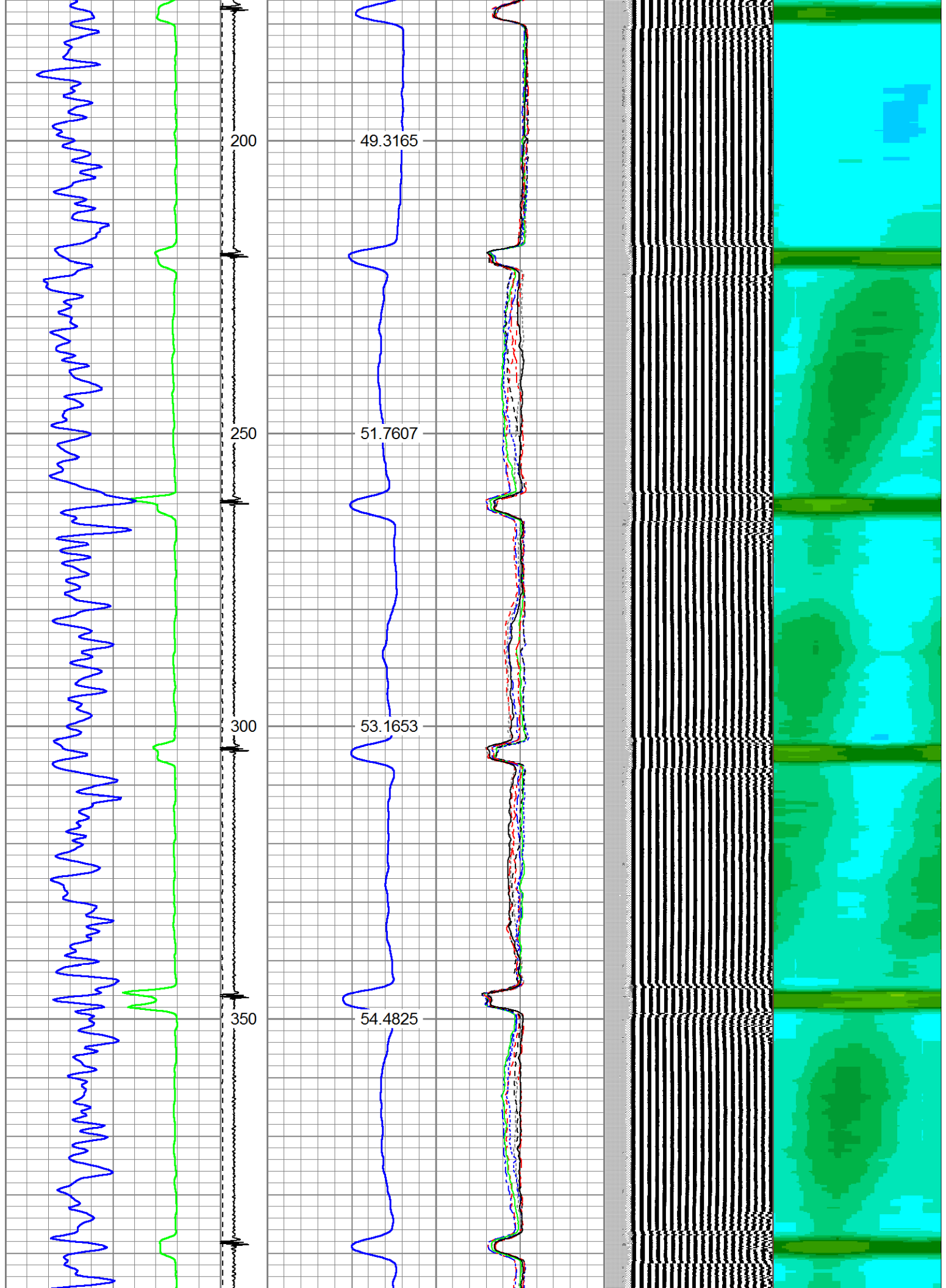
TEMP 0.08

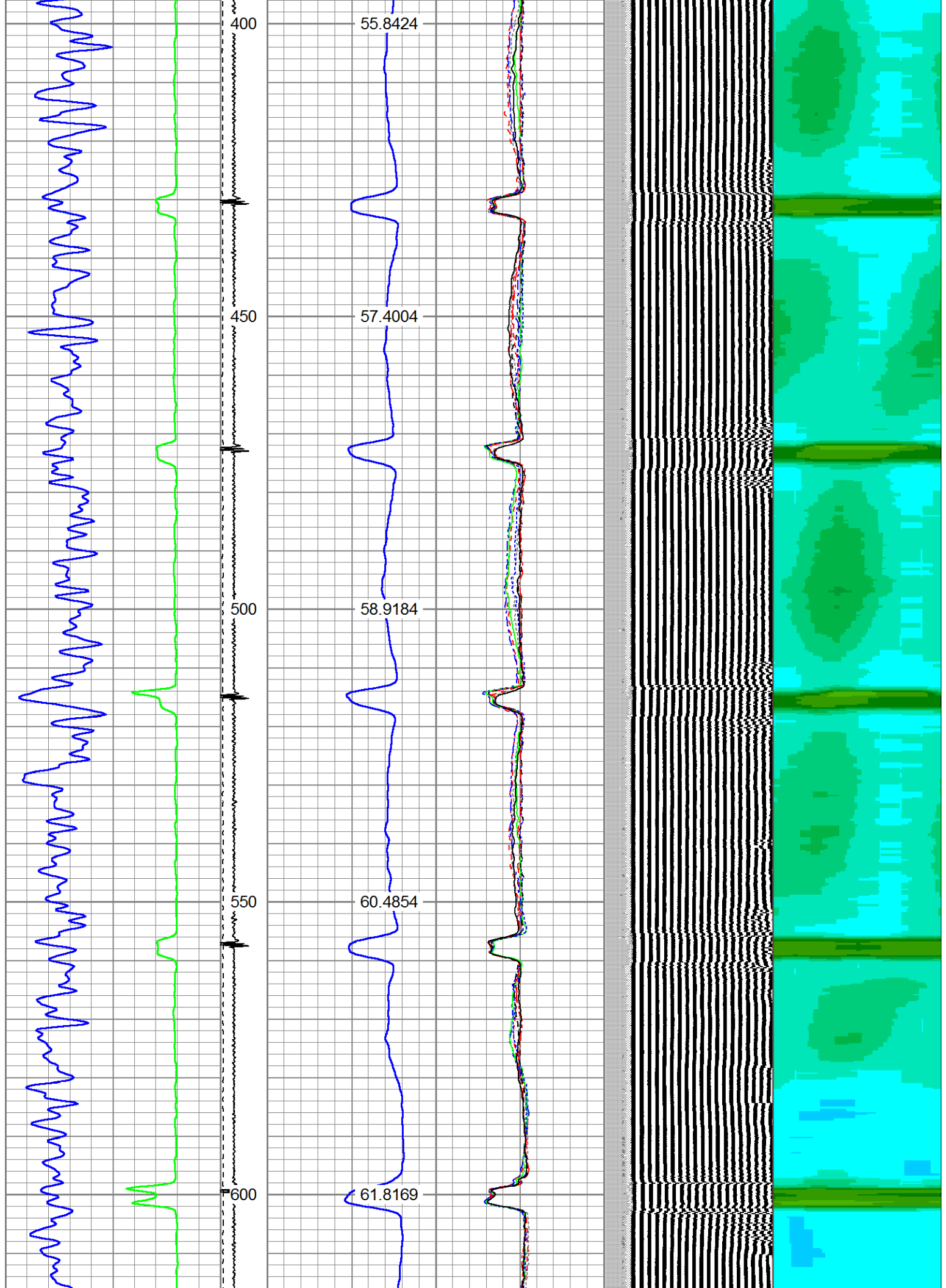
Dataset: howard 15-29.db: field/well/run1/pass4.1
 Total Length: 14.00 ft
 Total Weight: 150.00 lb
 O.D. 2.75 in

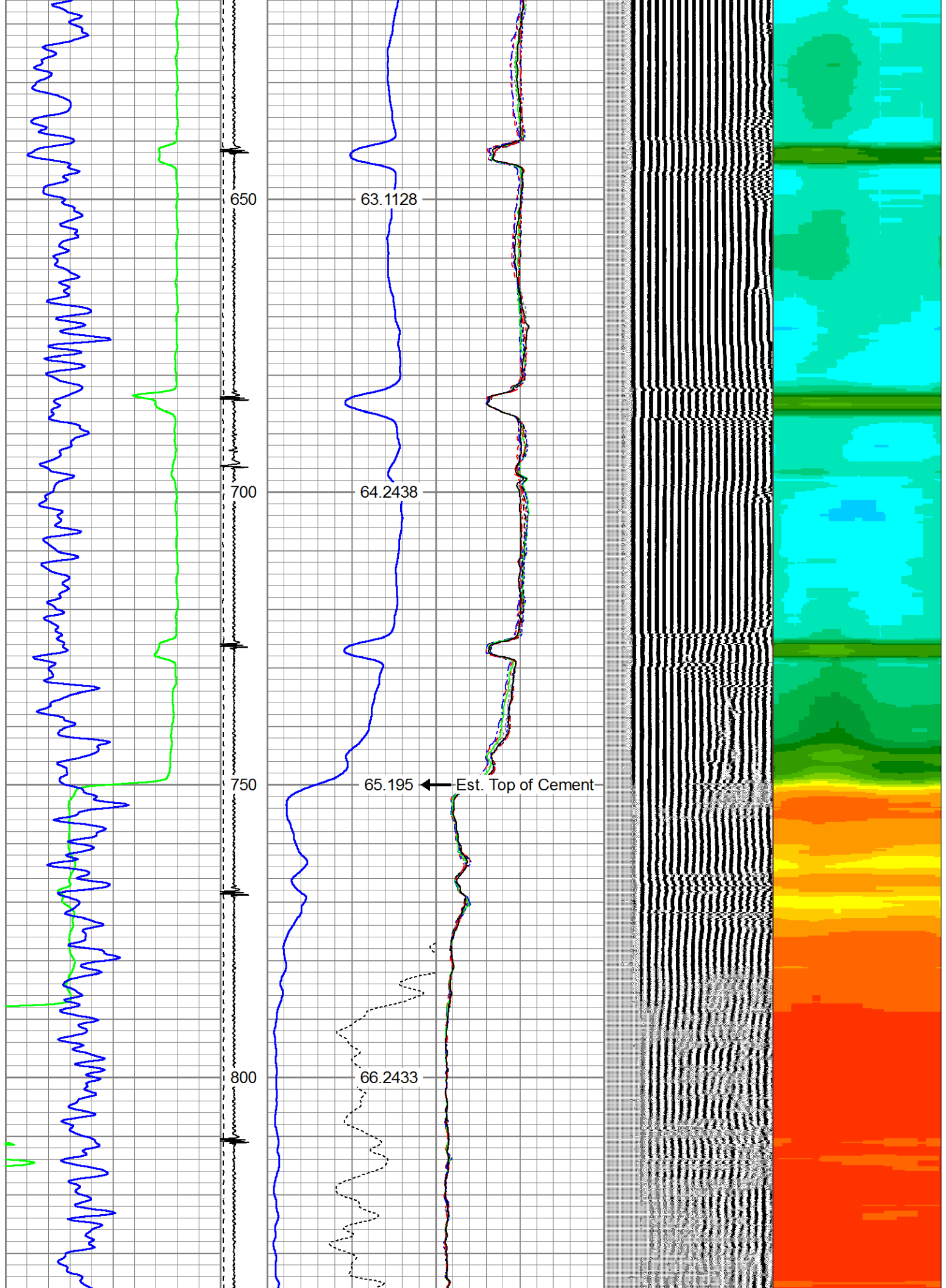
Database File: howard 15-29.db
 Dataset Pathname: pass4.1
 Presentation Format: rbl55
 Dataset Creation: Fri Feb 22 14:01:14 2019 by Calc 7.0 B1
 Charted by: Depth in Feet scaled 1:240

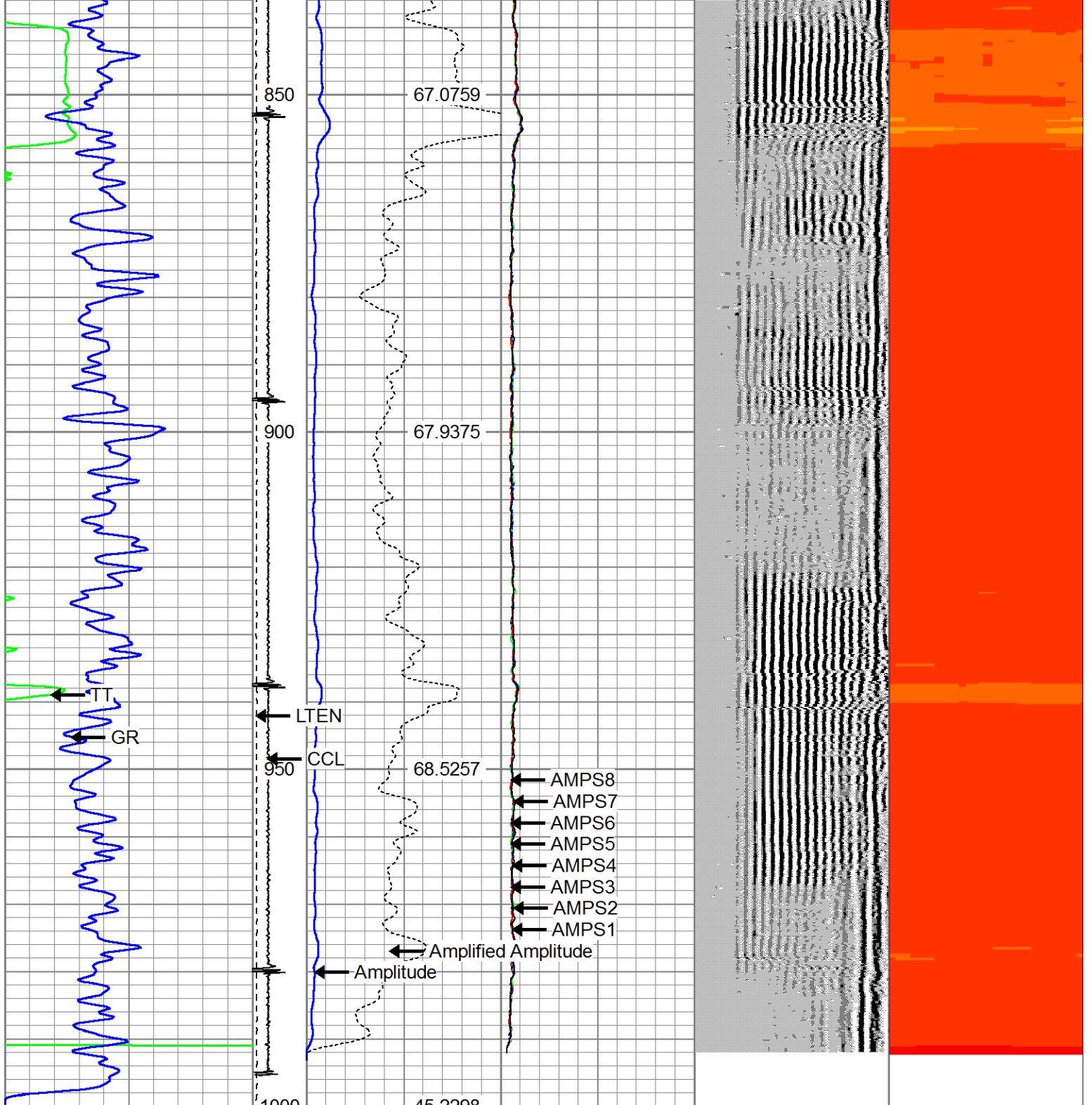
325	TT (usec)	225	LTEN	0	Amplitude (mV)	100	-5	AMPS2	150	200	VDL	1200	Cement Map
0	GR (GAPI)	200	(lb)	0	Amplified Amplitude	10	-5	AMPS3	150				1
			CCL	000	(mV)	10	-5	AMPS4	150				100
					TEMP		-5	AMPS5	150				
					(degF)		-5	AMPS6	150				
							-5	AMPS7	150				
							-5	AMPS8	150				
							-5	AMPS1	150				











325	TT (usec)	225	LTEN	0	Amplitude (mV)	100	-5	AMPS2	150	200	VDL	1200	Cement Map
0	GR (GAPI)	200	(lb)	0	Amplified Amplitude	10	-5	AMPS3	150				1
			CCL	0	(mV)	10	-5	AMPS4	150				100
					TEMP		-5	AMPS5	150				
					(degF)		-5	AMPS6	150				
							-5	AMPS7	150				
							-5	AMPS8	150				
							-5	AMPS1	150				

Company ANADARKO

Well HOWARD 15-29



Well HOWARD 15-29
Field Wattenberg
County WELD
State Colorado