



RADIAL CEMENT BOND LOG

Company ANADARKO PETROLEUM CORP. Well HOWARD 23-29 Field WATTENBERG County WELD State COLORADO	Company ANADARKO PETROLEUM CORP. Well HOWARD 23-29 Field WATTENBERG County WELD State COLORADO
--	--

Location: SEC 29 TWP 1N RGE 67W SW SE	API #: 05-123-33734 Other Services: NONE
--	---

Permanent Datum GROUND LEVEL Elevation 4748' Log Measured From KELLY BUSHING = 14' Drilling Measured From KELLY BUSHING	Elevation K.B. 5038' D.F. 5038' G.L. 5023'
---	---

Date 19 MARCH 2019 Run Number ONE Depth Driller 8515' Depth Logger 500' Bottom Logged Interval 500' Top Log Interval SURFACE Open Hole Size 7.875" Type Fluid WATER	Density / Viscosity ~8.3# Max. Recorded Temp. 54.6 DEG F Estimated Cement Top 480' Time Well Ready ROA Time Logger on Bottom 10:30 Equipment Number W-060 Location WINDSOR, CO Recorded By T. HAWLEY Witnessed By R. REYES
--	--

Borehole Record				Tubing Record			
Run Number	Bit	From	To	Size	Weight	From	To
1	12.25"	0'	1215'				
2	7.875"	1215'	8515'				

Casing Record Surface String 8.62" Size Prot. String Production String 4.5" Size Liner	Wgt/Ft 24# Top 0' Bottom 1209' 8368'
--	---

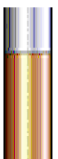
<<< Fold Here >>>

All interpretations are opinions based on inferences from electrical or other measurements and we cannot and do not guarantee the accuracy or correctness of any interpretation, and we shall not, except in the case of gross or willful negligence on our part, be liable or responsible for any loss, costs, damages, or expenses incurred or sustained by anyone resulting from any interpretation made by any of our officers, agents or employees. These interpretations are also subject to our general terms and conditions set out in our current Price Schedule.

Comments

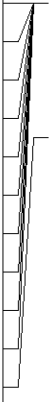
THANK YOU FOR USING CUTTERS WIRELINE

DATE OF SHOP CALIBRATION: 10/18
LOG RAN UNDER OPSI
FREE PIPE CALIBRATION @ 445'

Sensor	Offset (ft)	Schematic	Description	Len (ft)	OD (in)	Wt (lb)
						

WVF3FT
 WVFCAL
 WVFS1
 WVFS2
 WVFS3
 WVFS4
 WVFS5
 WVFS6
 WVFS7
 WVFS8
 WVF5FT

9.44
 9.44
 9.44
 9.44
 9.44
 9.44
 9.44
 9.44
 9.44
 9.44
 8.44



RBT-Probe (060112_55)
 Probe 2.75" Radii Bond Tool

8.75 2.75 90.00

CCL

4.75

GR-Probe (060109)
 Probe 2.75" 4 Channel Pulse

4.00 2.75 30.00

GR

2.25

TEMP-1.375TEMP (060110)
 Temperature Tool

1.25 1.38 30.00

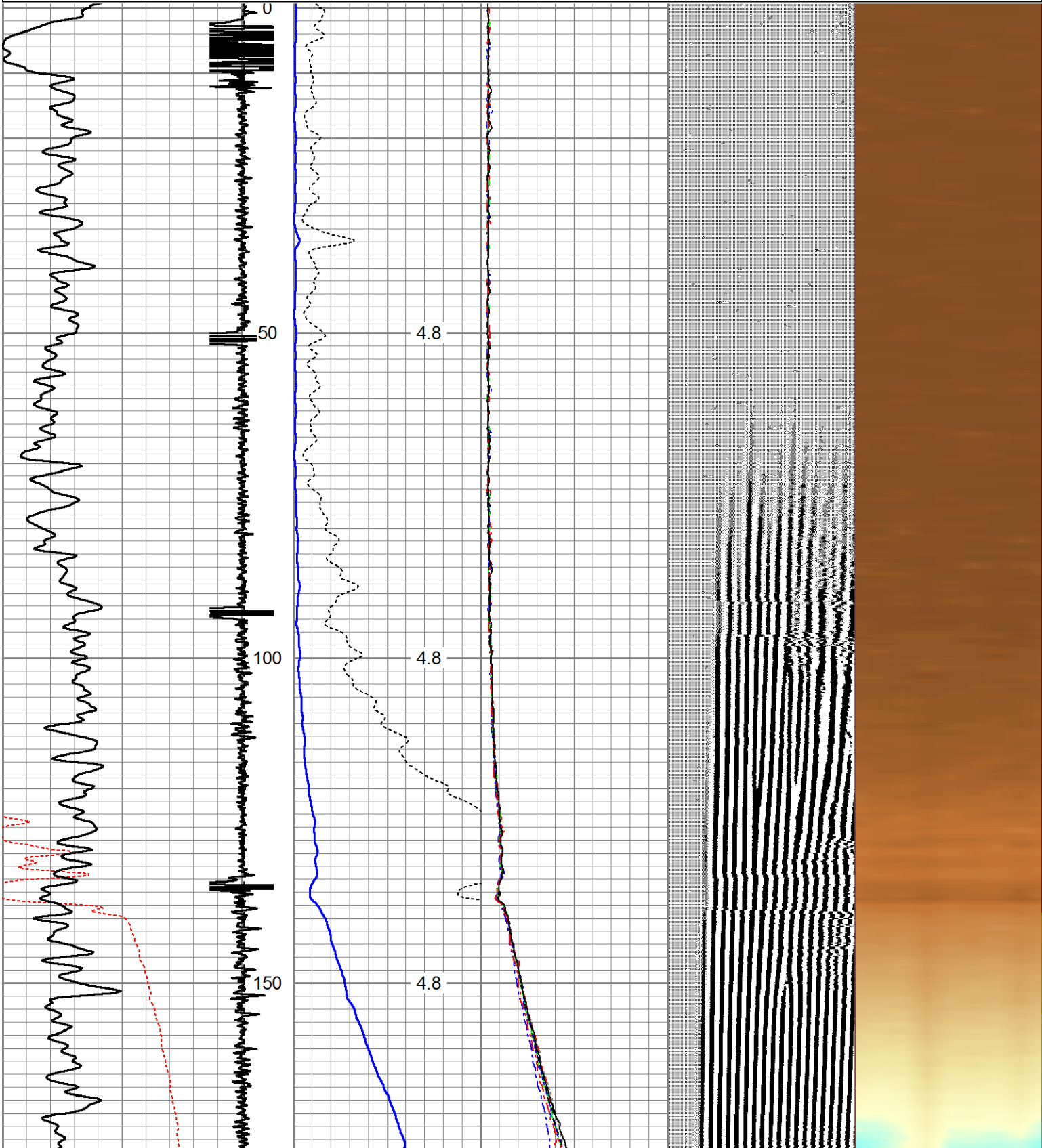
TEMP

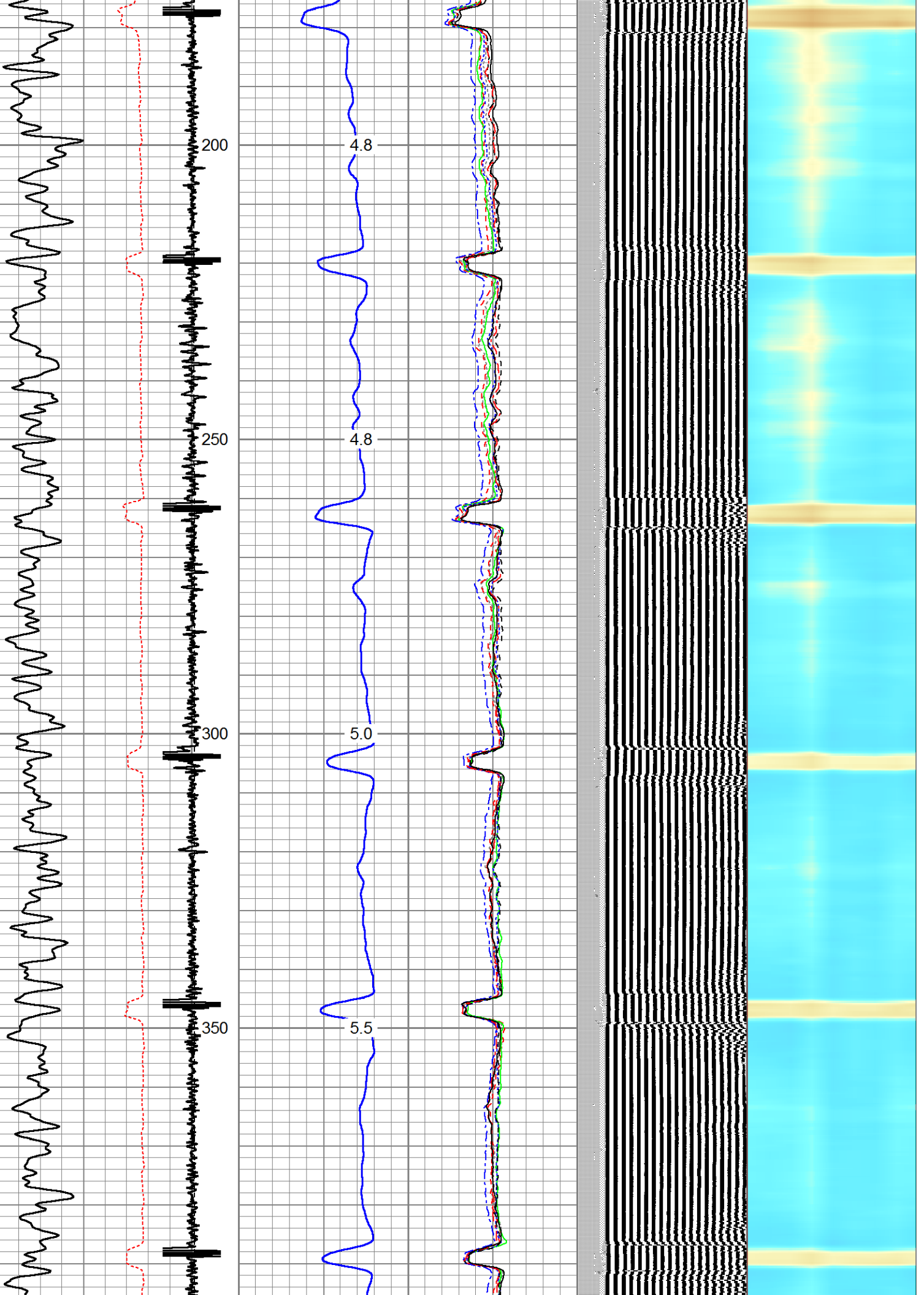
0.08

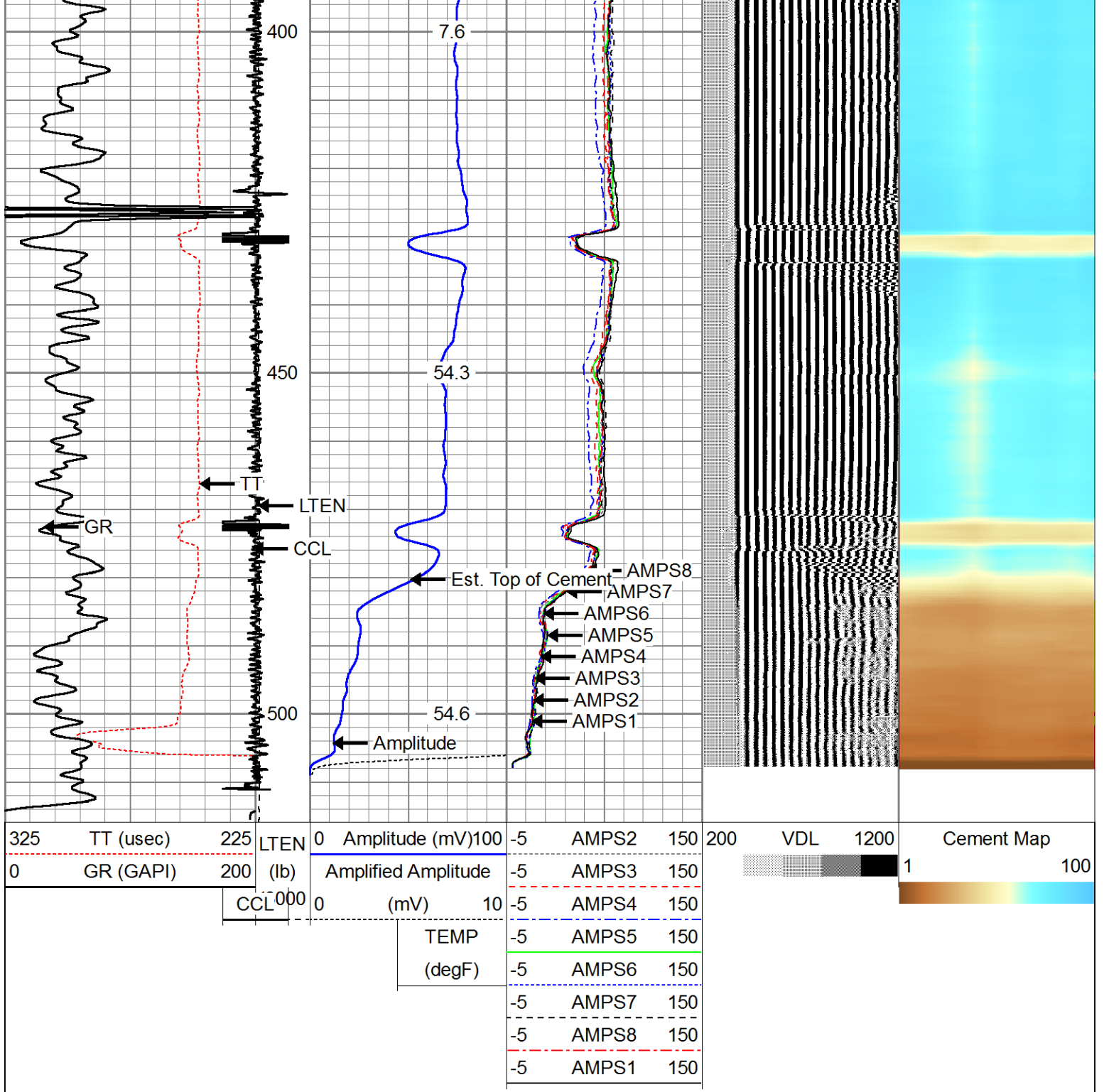
Dataset: howard 23-29.db: field/well/run1/pass3
 Total Length: 14.00 ft
 Total Weight: 150.00 lb
 O.D. 2.75 in

Database File: howard 23-29.db
 Dataset Pathname: pass3
 Presentation Format: rbl55
 Dataset Creation: Tue Mar 19 10:26:57 2019 by Log 7.0 B1
 Charted by: Depth in Feet scaled 1:240

325	TT (usec)	225	LTEN	0	Amplitude (mV)	100	-5	AMPS2	150	200	VDL	1200	Cement Map	
0	GR (GAPI)	200	(lb)	0	Amplified Amplitude	(mV)	10	-5	AMPS3	150			1	100
			CCL	000				-5	AMPS4	150				
					TEMP			-5	AMPS5	150				
					(degF)			-5	AMPS6	150				
								-5	AMPS7	150				
								-5	AMPS8	150				
								-5	AMPS1	150				







Company ANADARKO PETROLEUM CORP.
 Well HOWARD 23-29
 Field WATTENBERG
 County WELD
 State COLORADO