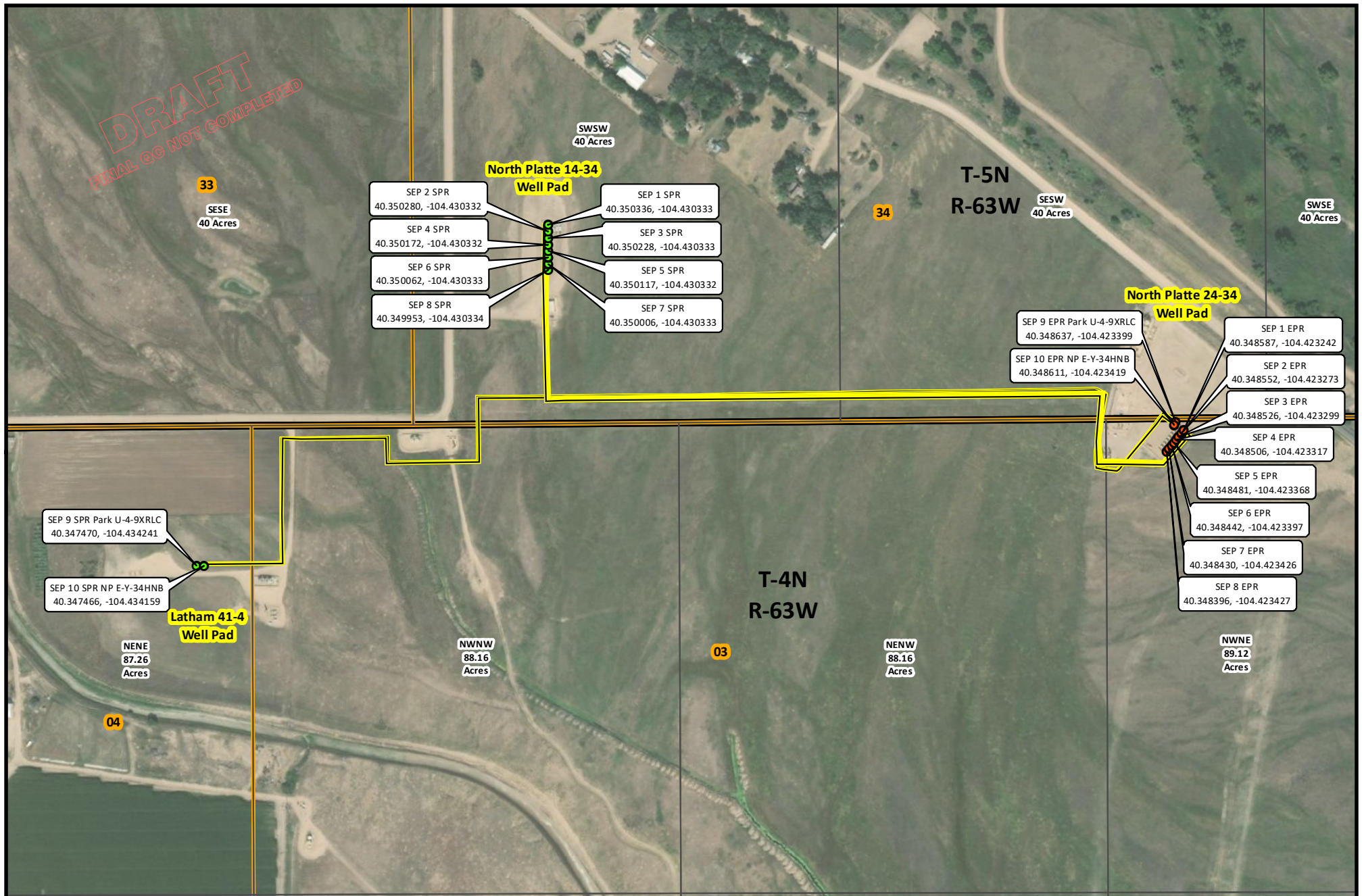


DRAFT
FINAL GG NOT COMPLETED

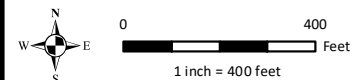


Bonanza Creek
NORTH PLATTE 24-34 MULTIPHASE LINES
Off-Location Flowline Layout Drawing
Weld County, Colorado
Project No. 102442007

4/23/2019

- Start Riser
- End Riser
- Off-Location Flowline

- PLSS Quarter Quarter
- PLSS Section



Service Layer Credits: Source: Esri, DigitalGlobe, GeoEye, Earthstar Geographics, CNES/Airbus DS, USDA, USGS, AeroGRID, IGN, and the GIS User Community

