

BLUE CHIP OIL, INC

Location: COLORADO Slot: Slot #03 Schneider 34-36 626°FSL & 2161°FEL
Field: WELD COUNTY Well: Schneider 34-36
Facility: SEC.36-T7N-R67W Wellbore: Schneider 34-36 PWB

Plot reference wellbore is Schneider 34-36 PWB	
True vertical depth is referenced to Rig on Slot #03 Schneider 34-36 626°FSL & 2161°FEL (RT)	Grid System: NAD83 / Lambert Colorado State Plane, Northern Zone (SD1), US feet
Measured depths are referenced to Rig on Slot #03 Schneider 34-36 626°FSL & 2161°FEL (RT)	North Reference: Grid north
Rig on Slot #03 Schneider 34-36 626°FSL & 2161°FEL (RT) to Mean Sea Level 4889 feet	Scale: True distance
Mean Sea Level to Mud line (Facility - SEC.36-T7N-R67W), 0 feet	Depths are in feet
Coordinates are in feet referenced to Slot	
Created by: Suzanne Thompson on 8/24/2007	



RECEIVED
PAKER
HUGHES

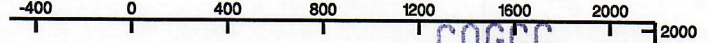
INTEQ

SEP 10 '07

COGCC

Scale 1 inch = 800

Easting (ft)



Northing (ft)

2000

1600

1200

800

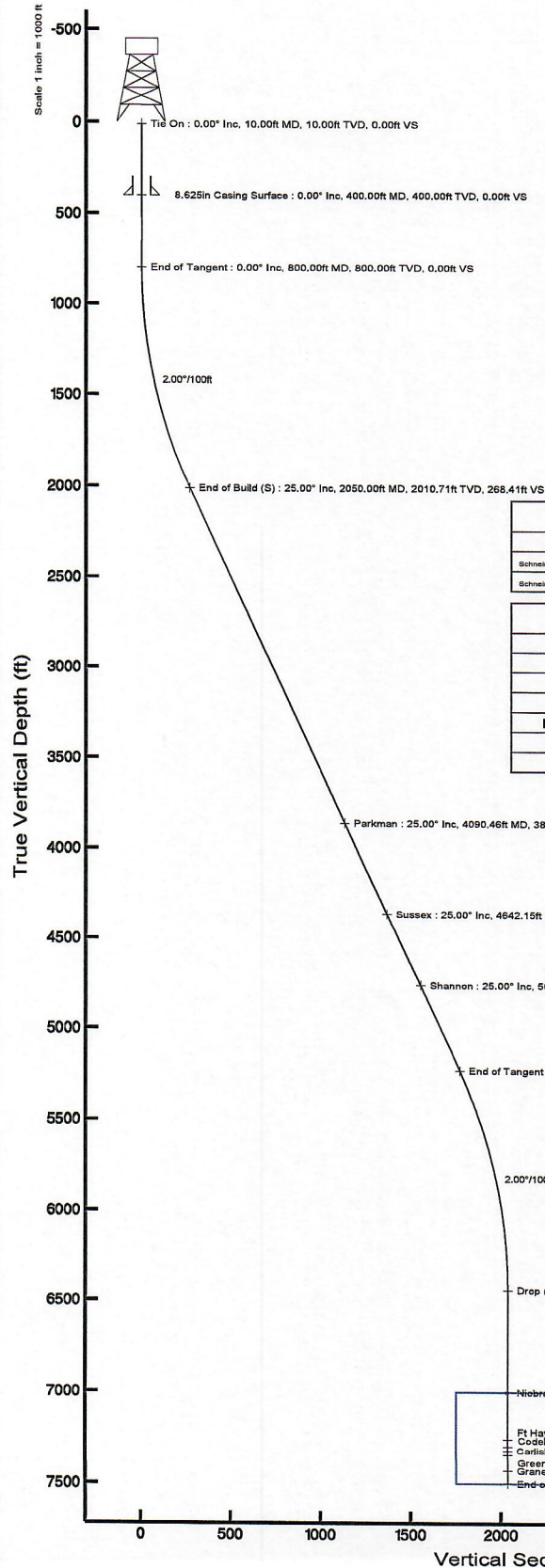
400

0

Schneider 34-36 Legal Box 400' X 400'
Center @ 1980°FSL & 660°FEL

Schneider 34-36 Target
1982°FSL & 659°FEL

Slot #03 Schneider 34-36
626°FSL & 2161°FEL



Targets

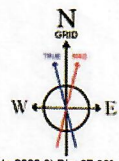
Name	MD (ft)	TVD (ft)	Local N (ft)	Local E (ft)	Grid East (USF)	Grid North (USF)	Latitude	Longitude
Schneider 34-36 Legal Box 400' X 400' Center @ 1980°FSL & 660°FEL	7000.00	1375.47	1201.06	3184885.15	1436211.09	40° 31' 44.020"N	104° 50' 04.321"W	
Schneider 34-36 Target 1982°FSL & 659°FEL	7000.00	1377.47	1202.06	3184886.14	1436213.09	40° 31' 44.040"N	104° 50' 04.308"W	

Well Profile Data

Design Comment	MD (ft)	Inc (°)	Az (°)	TVD (ft)	Local N (ft)	Local E (ft)	DLS (°/100ft)	VS (ft)
Tie On	10.00	0.000	47.478	10.00	0.00	0.00	0.00	0.00
End of Tangent	800.00	0.000	47.478	800.00	0.00	0.00	0.00	0.00
End of Build (S)	2050.00	25.000	47.478	2010.71	181.41	197.82	2.00	268.41
End of Tangent (S)	5602.18	25.000	47.478	5230.08	1196.05	1304.24	0.00	1769.63
Drop (S)	6852.18	0.000	47.478	6440.79	1377.47	1502.06	2.00	2038.03
End of Tangent	7911.39	0.000	47.478	7500.00	1377.47	1502.06	0.00	2038.03

Location Information

Facility Name			Grid East (USF)	Grid North (USF)	Latitude	Longitude
SEC 36-T7N-R67W			3161251.426	1437150.786	40° 31' 53.580"N	104° 50' 52.584"W
Slot	Local N (ft)	Local E (ft)	Grid East (USF)	Grid North (USF)	Latitude	Longitude
Slot #03 Schneider 34-36 626°FSL & 2161°FEL	-2315.19	2232.79	3183484.140	1434835.670	40° 31' 30.540"N	104° 50' 23.692"W
Rig on Slot #03 Schneider 34-36 626°FSL & 2161°FEL (RT) to Mud line (Facility - SEC.36-T7N-R67W)						4889ft
Mean Sea Level to Mud line (Facility - SEC.36-T7N-R67W)						0ft
Rig on Slot #03 Schneider 34-36 626°FSL & 2161°FEL (RT) to Mean Sea Level						4889ft



BGGM (1945.0 to 2009.0) Dip: 67.30° Field: 53628.8 nT
Magnetic North is 9.44 degrees East of True North (at 08/24/07)
Grid North is 0.43 degrees East of True North
To correct azimuth from True to Grid subtract 0.43 degrees
To correct azimuth from Magnetic to Grid add 9.02 degrees

Azimuth 47.48° with reference 0.00 N, 0.00 E from wellhead

Planned Wellpath Report

Schneider 34-36 PWP

Page 1 of 4



REFERENCE WELLPATH IDENTIFICATION			
Operator	BLUE CHIP OIL, INC	Slot	Slot #03 Schneider 34-36 626'FSL & 2161'FEL
Area	COLORADO	Well	Schneider 34-36
Field	WELD COUNTY	Wellbore	Schneider 34-36 PWB
Facility	SEC.36-T7N-R67W		

REPORT SETUP INFORMATION			
Projection System	NAD83 / Lambert Colorado State Planes, Northern Zone (501), US feet	Software System	WellArchitect™ 1.2
North Reference	Grid	User	Suzanne Thompson
Scale	0.999968	Report Generated	08/24/07 at 14:42:32
Wellbore last revised	08/24/07	Database/Source file	WA_Denver/Schneider

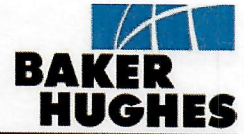
WELLPATH LOCATION						
	Local coordinates		Grid coordinates		Geographic coordinates	
	North [feet]	East [feet]	Easting [US feet]	Northing [US feet]	Latitude [°]	Longitude [°]
Slot Location	-2315.19	2232.79	3183484.14	1434835.67	40 31 30.540N	104 50 23.892W
Facility Reference Pt			3181251.43	1437150.79	40 31 53.580N	104 50 52.584W
Field Reference Pt			3181251.43	1437150.79	40 31 53.580N	104 50 52.584W

WELLPATH DATUM			
Calculation method	Minimum curvature	Rig on Slot #03 Schneider 34-36 626'FSL & 2161'FEL (RT) to Facility Vertical Datum	4889.0
Horizontal Reference Pt	Slot	Rig on Slot #03 Schneider 34-36 626'FSL & 2161'FEL (RT) to Mean Sea Level	4889.0
Vertical Reference Pt	Rig on Slot #03 Schneider 34-36 626'FSL & 2161'FEL (RT)	Facility Vertical Datum to Mud Line (Facility)	0.00
MD Reference Pt	Rig on Slot #03 Schneider 34-36 626'FSL & 2161'FEL (RT)	Section Origin	N 0.00
Field Vertical Reference	Mean Sea Level	Section Azimuth	47.48°

Planned Wellpath Report

Schneider 34-36 PWP

Page 2 of 4



INTEQ

REFERENCE WELLPATH IDENTIFICATION

Operator	BLUE CHIP OIL, INC	Slot	Slot #03 Schneider 34-36 626'FSL & 2161'FEL
Area	COLORADO	Well	Schneider 34-36
Field	WELD COUNTY	Wellbore	Schneider 34-36 PWB
Facility	SEC.36-T7N-R67W		

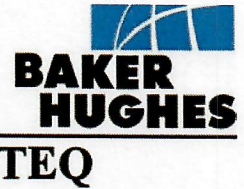
WELLPATH DATA (86 stations) † = interpolated/extrapolated station

MD [feet]	Inclination [°]	Azimuth [°]	TVD [feet]	Vert Sect [feet]	North [feet]	East [feet]	DLS [°/100ft]
0.00†	0.000	47.478	0.00	0.00	0.00	0.00	0.00
10.00	0.000	47.478	10.00	0.00	0.00	0.00	0.00
110.00†	0.000	0.000	110.00	0.00	0.00	0.00	0.00
210.00†	0.000	0.000	210.00	0.00	0.00	0.00	0.00
310.00†	0.000	0.000	310.00	0.00	0.00	0.00	0.00
410.00†	0.000	0.000	410.00	0.00	0.00	0.00	0.00
510.00†	0.000	0.000	510.00	0.00	0.00	0.00	0.00
610.00†	0.000	0.000	610.00	0.00	0.00	0.00	0.00
710.00†	0.000	0.000	710.00	0.00	0.00	0.00	0.00
800.00	0.000	47.478	800.00	0.00	0.00	0.00	0.00
810.00†	0.200	47.478	810.00	0.02	0.01	0.01	2.00
910.00†	2.200	47.478	909.97	2.11	1.43	1.56	2.00
1010.00†	4.200	47.478	1009.81	7.69	5.20	5.67	2.00
1110.00†	6.200	47.478	1109.40	16.76	11.33	12.35	2.00
1210.00†	8.200	47.478	1208.60	29.29	19.80	21.59	2.00
1310.00†	10.200	47.478	1307.31	45.28	30.60	33.37	2.00
1410.00†	12.200	47.478	1405.40	64.70	43.73	47.68	2.00
1510.00†	14.200	47.478	1502.75	87.53	59.16	64.51	2.00
1610.00†	16.200	47.478	1599.25	113.75	76.88	83.84	2.00
1710.00†	18.200	47.478	1694.77	143.32	96.87	105.63	2.00
1810.00†	20.200	47.478	1789.21	176.20	119.09	129.86	2.00
1910.00†	22.200	47.478	1882.43	212.37	143.53	156.52	2.00
2010.00†	24.200	47.478	1974.34	251.76	170.16	185.55	2.00
2050.00	25.000	47.478	2010.71	268.41	181.41	197.82	2.00
2110.00†	25.000	47.478	2065.09	293.77	198.55	216.51	0.00
2210.00†	25.000	47.478	2155.72	336.03	227.11	247.66	0.00
2310.00†	25.000	47.478	2246.35	378.29	255.68	278.80	0.00
2410.00†	25.000	47.478	2336.98	420.55	284.24	309.95	0.00
2510.00†	25.000	47.478	2427.61	462.81	312.81	341.10	0.00
2610.00†	25.000	47.478	2518.24	505.07	341.37	372.25	0.00
2710.00†	25.000	47.478	2608.88	547.34	369.93	403.39	0.00
2810.00†	25.000	47.478	2699.51	589.60	398.50	434.54	0.00
2910.00†	25.000	47.478	2790.14	631.86	427.06	465.69	0.00
3010.00†	25.000	47.478	2880.77	674.12	455.63	496.84	0.00
3110.00†	25.000	47.478	2971.40	716.38	484.19	527.98	0.00
3210.00†	25.000	47.478	3062.03	758.65	512.75	559.13	0.00
3310.00†	25.000	47.478	3152.66	800.91	541.32	590.28	0.00
3410.00†	25.000	47.478	3243.29	843.17	569.88	621.43	0.00
3510.00†	25.000	47.478	3333.92	885.43	598.44	652.57	0.00
3610.00†	25.000	47.478	3424.55	927.69	627.01	683.72	0.00

Planned Wellpath Report

Schneider 34-36 PWP

Page 3 of 4



REFERENCE WELLPATH IDENTIFICATION			
Operator	BLUE CHIP OIL, INC	Slot	Slot #03 Schneider 34-36 626'FSL & 2161'FEL
Area	COLORADO	Well	Schneider 34-36
Field	WELD COUNTY	Wellbore	Schneider 34-36 PWB
Facility	SEC.36-T7N-R67W		

WELLPATH DATA (86 stations) † = interpolated/extrapolated station							
MD [feet]	Inclination [°]	Azimuth [°]	TVD [feet]	Vert Sect [feet]	North [feet]	East [feet]	DLS [°/100ft]
3710.00†	25.000	47.478	3515.18	969.95	655.57	714.87	0.00
3810.00†	25.000	47.478	3605.81	1012.22	684.14	746.02	0.00
3910.00†	25.000	47.478	3696.44	1054.48	712.70	777.16	0.00
4010.00†	25.000	47.478	3787.08	1096.74	741.26	808.31	0.00
4110.00†	25.000	47.478	3877.71	1139.00	769.83	839.46	0.00
4210.00†	25.000	47.478	3968.34	1181.26	798.39	870.61	0.00
4310.00†	25.000	47.478	4058.97	1223.53	826.96	901.75	0.00
4410.00†	25.000	47.478	4149.60	1265.79	855.52	932.90	0.00
4510.00†	25.000	47.478	4240.23	1308.05	884.08	964.05	0.00
4610.00†	25.000	47.478	4330.86	1350.31	912.65	995.20	0.00
4710.00†	25.000	47.478	4421.49	1392.57	941.21	1026.34	0.00
4810.00†	25.000	47.478	4512.12	1434.83	969.78	1057.49	0.00
4910.00†	25.000	47.478	4602.75	1477.10	998.34	1088.64	0.00
5010.00†	25.000	47.478	4693.38	1519.36	1026.90	1119.79	0.00
5110.00†	25.000	47.478	4784.01	1561.62	1055.47	1150.93	0.00
5210.00†	25.000	47.478	4874.64	1603.88	1084.03	1182.08	0.00
5310.00†	25.000	47.478	4965.28	1646.14	1112.60	1213.23	0.00
5410.00†	25.000	47.478	5055.91	1688.41	1141.16	1244.38	0.00
5510.00†	25.000	47.478	5146.54	1730.67	1169.72	1275.52	0.00
5602.18	25.000	47.478	5230.08	1769.63	1196.05	1304.24	0.00
5610.00†	24.844	47.478	5237.17	1772.92	1198.28	1306.66	2.00
5710.00†	22.844	47.478	5328.63	1813.34	1225.60	1336.45	2.00
5810.00†	20.844	47.478	5421.45	1850.55	1250.75	1363.88	2.00
5910.00†	18.844	47.478	5515.51	1884.49	1273.69	1388.89	2.00
6010.00†	16.844	47.478	5610.69	1915.13	1294.40	1411.48	2.00
6110.00†	14.844	47.478	5706.89	1942.43	1312.85	1431.60	2.00
6210.00†	12.844	47.478	5803.98	1966.36	1329.02	1449.23	2.00
6310.00†	10.844	47.478	5901.84	1986.88	1342.89	1464.36	2.00
6410.00†	8.844	47.478	6000.37	2003.98	1354.45	1476.95	2.00
6510.00†	6.844	47.478	6099.43	2017.62	1363.67	1487.01	2.00
6610.00†	4.844	47.478	6198.90	2027.80	1370.55	1494.52	2.00
6710.00†	2.844	47.478	6298.67	2034.51	1375.08	1499.46	2.00
6810.00†	0.844	47.478	6398.61	2037.72	1377.26	1501.83	2.00
6852.18	0.000	47.478	6440.79 ¹	2038.03	1377.47	1502.06	2.00
6910.00†	0.000	0.000	6498.61	2038.03	1377.47	1502.06	0.00
7010.00†	0.000	0.000	6598.61	2038.03	1377.47	1502.06	0.00
7110.00†	0.000	0.000	6698.61	2038.03	1377.47	1502.06	0.00
7210.00†	0.000	0.000	6798.61	2038.03	1377.47	1502.06	0.00
7310.00†	0.000	0.000	6898.61	2038.03	1377.47	1502.06	0.00
7410.00†	0.000	0.000	6998.61	2038.03	1377.47	1502.06	0.00

Planned Wellpath Report

Schneider 34-36 PWP

Page 4 of 4



INTEQ

REFERENCE WELLPATH IDENTIFICATION

Operator	BLUE CHIP OIL, INC	Slot	Slot #03 Schneider 34-36 626'FSL & 2161'FEL
Area	COLORADO	Well	Schneider 34-36
Field	WELD COUNTY	Wellbore	Schneider 34-36 PWB
Facility	SEC.36-T7N-R67W		

WELLPATH DATA (86 stations) † = interpolated/extrapolated station

MD [feet]	Inclination [°]	Azimuth [°]	TVD [feet]	Vert Sect [feet]	North [feet]	East [feet]	DLS [°/100ft]
7510.00†	0.000	0.000	7098.61	2038.03	1377.47	1502.06	0.00
7610.00†	0.000	0.000	7198.61	2038.03	1377.47	1502.06	0.00
7710.00†	0.000	0.000	7298.61	2038.03	1377.47	1502.06	0.00
7810.00†	0.000	0.000	7398.61	2038.03	1377.47	1502.06	0.00
7910.00†	0.000	0.000	7498.61	2038.03	1377.47	1502.06	0.00
7911.39	0.000	47.478	7500.00	2038.03	1377.47	1502.06	0.00

HOLE & CASING SECTIONS Ref Wellbore: Schneider 34-36 PWB Ref Wellpath: Schneider 34-36 PWP

String/Diameter	Start MD [feet]	End MD [feet]	Interval [feet]	Start TVD [feet]	End TVD [feet]	Start N/S [feet]	Start E/W [feet]	End N/S [feet]	End E/W [feet]
12.25in Open Hole	10.00	400.00	390.00	10.00	400.00	0.00	0.00	0.00	0.00
8.625in Casing Surface	10.00	400.00	390.00	10.00	400.00	0.00	0.00	0.00	0.00

TARGETS

Name	MD [feet]	TVD [feet]	North [feet]	East [feet]	Grid East [us survey feet]	Grid North [us survey feet]	Latitude [°]	Longitude [°]	Shape
Schneider 34-36 Legal Box 400' X 400' Center @ 1980'FSL & 660'FEL		7000.00	1375.47	1501.06	3184985.15	1436211.09	40 31 44.020N	104 50 04.321W	square
1) Schneider 34-36 Target 1982'FSL & 659'FEL		7000.00	1377.47	1502.06	3184986.14	1436213.09	40 31 44.040N	104 50 04.308W	point

SURVEY PROGRAM Ref Wellbore: Schneider 34-36 PWB Ref Wellpath: Schneider 34-36 PWP

Start MD [feet]	End MD [feet]	Positional Uncertainty Model	Log Name/Comment	Wellbore
10.00	7911.39	MTC (Collar, pre-2000) (Standard)		Schneider 34-36 PWB

WELLPATH COMMENTS

MD [feet]	Inclination [degrees]	Azimuth [degrees]	TVD [feet]	Comment
4090.46	25.000	47.478	3860.00	Parkman
4642.15	25.000	47.478	4360.00	Sussex
5083.50	25.000	47.478	4760.00	Shannon
7411.39	0.000	47.478	7000.00	Niobrara
7671.39	0.000	47.478	7260.00	Ft Hays
7711.39	0.000	47.478	7300.00	Codell
7736.39	0.000	47.478	7325.00	Carlisle
7761.39	0.000	47.478	7350.00	Greenhorn
7841.39	0.000	47.478	7430.00	Graneros