

HALLIBURTON

iCem[®] Service

VERDAD OIL & GAS CORP

United States of America, COLORADO

For: Joe Madson

Date: Sunday, July 30, 2017

WELD

Verdad Homestead 19 Production

Job Date: Sunday, July 30, 2017

Sincerely,

Nick Peterson

Legal Notice

Disclaimer:

All information in this report is provided subject to the terms and conditions which govern the services provided by Halliburton. Halliburton personnel use their best efforts in gathering information and their best judgment in interpreting it, but any interpretation, research, analysis or recommendation furnished by Halliburton are opinions based upon inferences from measurements and empirical relationships and assumptions, which inferences and empirical relationships and assumptions are not infallible, and with respect to which professionals in the industry may differ. Accordingly, HALLIBURTON IS UNABLE TO GUARANTEE THE ACCURACY OF ANY CHART INTERPRETATION, RESEARCH ANALYSIS, OR JOB RECOMMENDATION and any interpretation or recommendation is not for use of or reliance upon by any third party. The customer has full responsibility for any of its decisions which are based on the information provided in this report.

Table of Contents

Real-Time Job Summary4

 Job Event Log..... 4

Attachments.....8

 Verdad Homestead 19 Production-Custom Results.png..... 8

Custom Graphs.....**Error! Bookmark not defined.**

 Custom Graph..... **Error! Bookmark not defined.**

1.0 Real-Time Job Summary

1.1 Job Event Log

Type	Seq. No.	Activity	Graph Label	Date	Time	Source	DH Density (ppg)	DS Pump Rate (bbl/min)	PS Pump Press (psi)	DS Pmp Stg Tot (bbl)	Comments
Event	1	Call Out	Call Out	7/29/2017	12:30:00	USER					CREW CALLED OUT AT 12:30, REQUESTED ON LOCATION 16:30. CREW PICKED UP CEMENT, CHEMICALS, AND PLUG CONTAINER FROM FT. LUPTON, CO. BULK 660, E-16, 11023106 AND PUMP RT-4.
Event	2	Pre-Convoy Safety Meeting	Pre-Convoy Safety Meeting	7/29/2017	16:00:00	USER					DISCUSSED ROUTES, HAZARDS, AND COMMUNICATION WITH CREW.
Event	3	Crew Leave Yard	Crew Leave Yard	7/29/2017	16:15:00	USER					STARTED JOURNEY MANAGEMENT.
Event	4	Arrive at Location from Service Center	Arrive at Location	7/29/2017	16:30:00	USER					END JOURNEY MANAGEMENT. MEET WITH CO. MAN TO DISCUSS JOB. TD- 14,532', TP- 5.5" 20 LB/FT HCP-110 SET @ 14,516.70', OH- 8.5", PC- 9.625" 36 LB/FT SHOE @ 1,726', WF- 9.8 LB/GAL, TVD- 7,485', 144 CENTRALIZERS. CASING LANDED @ 18:00 07/29/2017.

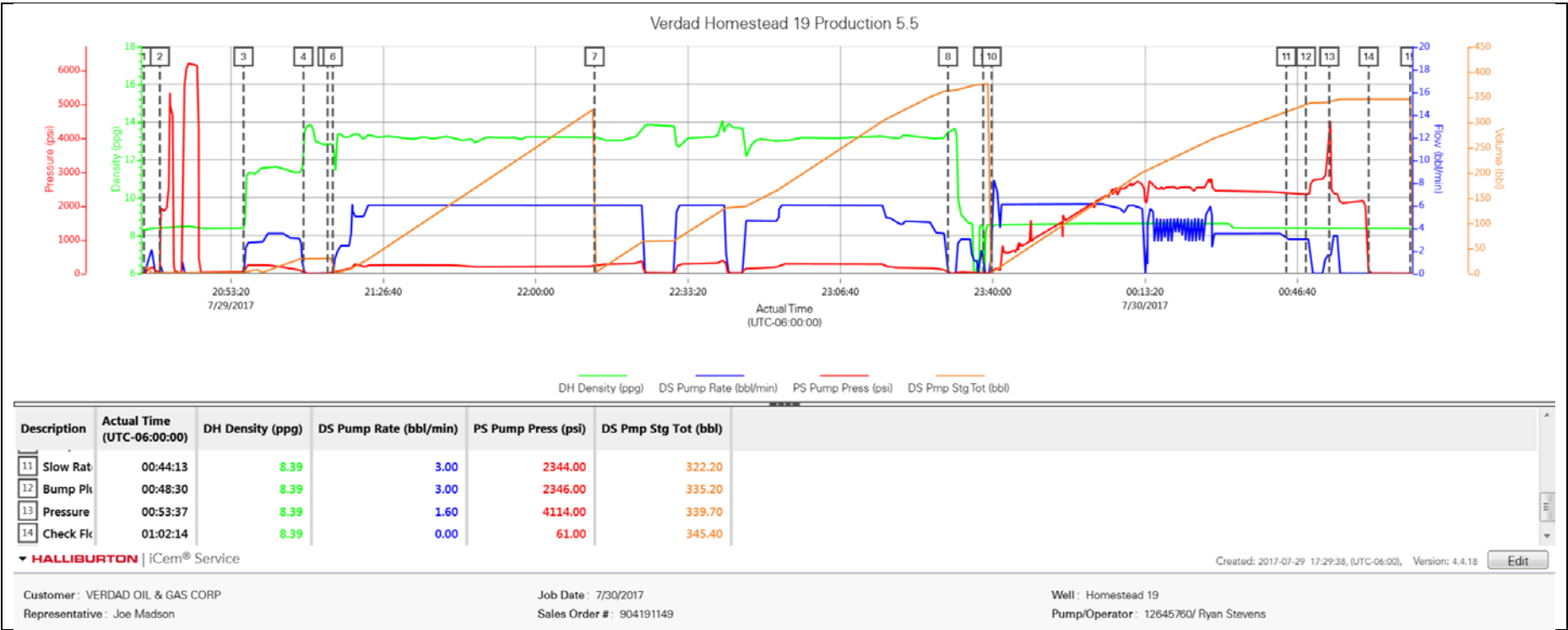
Event	5	Pre-Rig Up Safety Meeting	Pre-Rig Up Safety Meeting	7/29/2017	17:00:00	USER						HAZARD HUNT. DISCUSSED POSSIBLE HAZARDS ASSOCIATED WITH LOCATION, RIG UP AND WEATHER.
Event	6	Rig-Up Equipment	Rig-Up Equipment	7/29/2017	17:30:00	USER						CREW STAGED EQUIPMENT AND RIGGED UP BULK, IRON, AND WATER HOSES TO PERFORM JOB.
Event	7	Safety Meeting - Pre Job	Safety Meeting - Pre Job	7/29/2017	20:00:00	USER						MEETING WITH HALLIBURTON AND RIG PERSONNEL. COMMUNICATED POTENTIAL SAFETY HAZARDS AND JOB DETAILS.
Event	8	Start Job	Start Job	7/29/2017	20:34:16	COM5						BEGIN RECORDING JOB DATA.
Event	9	Pressure Test	Pressure Test	7/29/2017	20:37:45	USER						PRESSURE TESTED IRON TO 6000 PSI. KICKOUTS SET @ 500 PSI, KICKED OUT @ 1939 PSI, 5TH GEAR STALL OUT @ 1500 PSI.
Event	10	Pump Spacer 1	Pump Spacer 1	7/29/2017	20:56:04	COM5	11.50	3.00	42.00	40.00		PUMP 40 BBLS OF TUNED SPACER @ 11.5 LB/GAL, DENSITY VERIFIED BY PRESSURIZED MUD SCALES. PRESSURE 127 @ 3 BBLS/MIN. 20 GALS D-AIR, 28 GALS DUAL SPACER B, AND 28 GALS MUSOL A.
Event	11	Shutdown	Shutdown	7/29/2017	21:09:11	USER						DROP BOTTOM PLUG AND BUILD UP CEMENT TUB.

Event	12	Drop Bottom Plug	Drop Bottom Plug	7/29/2017	21:14:27	USER						PLUG LEFT CONTAINER, VERIFIED BY COMPANY MAN.
Event	13	Pump Lead Cement	Pump Lead Cement	7/29/2017	21:15:35	COM5	13.20	6.00	237.0	301.94		PUMP 1080 SKS OF ELASTICEM @ 13.2 LB/GAL, 1.57 FT3/SK, 7.55 GAL/SK, 301.94 BBLS, DENSITY VERIFIED BY PRESSURIZED MUD SCALES. PRESSURE 237 @ 6 BBLS/MIN.
Event	14	Pump Tail Cement	Pump Tail Cement	7/29/2017	22:12:51	COM5	13.23	6.00	209.00	334.35		PUMP 920 SKS OF NEOCEM @ 13.2 LB/GAL, 2.04 FT3/SK, 9.75 GAL/SK, 334.25 BBLS, DENSITY VERIFIED BY PRESSURIZED MUD SCALES. PRESSURE 278 @ 6 BBLS/MIN.
Event	15	Shutdown	Shutdown	7/29/2017	23:30:12	USER						WASH PUMPS AND LINES BEFORE DROPPING PLUG.
Event	16	Drop Top Plug	Drop Top Plug	7/29/2017	23:37:54	COM5						PLUG LEFT CONTAINER, VERIFIED BY COMPANY MAN.
Event	17	Pump Displacement	Pump Displacement	7/29/2017	23:39:44	COM5	8.34	6.00	2600	319.0		BEGIN DISPLACEMENT OF 319 BBLS. THE FIRST 10 BBLS OF FRESH WATER AND MMCR. FOLLOW WITH 290 BBLS OF FRESH WATER AND BIOCID. CEMENT BACK TO SURFACE @ 289 BBLS AWAY. TOTAL OF 30 BBLS BACK TO SURFACE. PUMP RATE 6 BBLS/MIN @ 2600 PSI.
Event	18	Slow Rate	Slow Rate	7/30/2017	00:44:13	USER	8.39	3.00	2344.00	310.0		SLOW RATE TO 3 BPM @ 310 BBLS TO BUMP PLUG.

Event	19	Bump Plug	Bump Plug	7/30/2017	00:48:30	USER	8.39	3.00	2346.00	319.20	PLUG BUMPED AT CALCULATED DISPLACEMENT. PRESSURED 500 PSI OVER BUMP.
Event	20	Pressure Up	Pressure Up	7/30/2017	00:53:37	USER	8.39	1.60	4114.00	319.70	PRESSURE UP TO SHIFT SLEEVES FOR WET SHOE TOOL. SHIFTED @ 4,504 PSI. PUMPED 5 BBLS AFTER FOR WET SHOE.
Event	21	Check Floats	Check Floats	7/30/2017	01:02:14	USER					FLOATS HELD GOT 1 BBL BACK.
Event	22	End Job	End Job	7/30/2017	01:11:20	COM5					STOP RECORDING JOB DATA.
Event	23	Pre-Rig Down Safety Meeting	Pre-Rig Down Safety Meeting	7/30/2017	01:30:00	USER					DISCUSSED POSSIBLE HAZARDS ASSOCIATED WITH WEATHER, LOCATION AND RIGGING DOWN IRON AND HOSES.
Event	24	Rig-Down Completed	Rig-Down Completed	7/30/2017	02:30:00	USER					ALL HALLIBURTON ITEMS WERE STOWED FOR TRAVEL, AND LOCATION WAS CLEAN.
Event	25	Pre-Convoy Safety Meeting	Pre-Convoy Safety Meeting	7/30/2017	02:45:00	USER					DISCUSSED ROUTES HAZARDS AND COMMUNICATION WITH CREW.
Event	26	Depart Location	Depart Location	7/30/2017	03:00:00	USER					THANK YOU FOR USING HALLIBURTON - NICK PETERSON AND CREW.

2.0 Attachments

2.1 Verdad Homestead 19 Production-Custom Results.png



3.0