

HALLIBURTON

iCem® Service

VERDAD OIL & GAS CORP

United States of America, COLORADO

For: Joe Madson

Date: Monday, May 29, 2017

WELD

Verdad Homestead 19

Job Date: Monday, May 29, 2017

Sincerely,

Nick Peterson

Legal Notice

Disclaimer:

All information in this report is provided subject to the terms and conditions which govern the services provided by Halliburton. Halliburton personnel use their best efforts in gathering information and their best judgment in interpreting it, but any interpretation, research, analysis or recommendation furnished by Halliburton are opinions based upon inferences from measurements and empirical relationships and assumptions, which inferences and empirical relationships and assumptions are not infallible, and with respect to which professionals in the industry may differ. Accordingly, HALLIBURTON IS UNABLE TO GUARANTEE THE ACCURACY OF ANY CHART INTERPRETATION, RESEARCH ANALYSIS, OR JOB RECOMMENDATION and any interpretation or recommendation is not for use of or reliance upon by any third party. The customer has full responsibility for any of its decisions which are based on the information provided in this report.

Table of Contents

Real-Time Job Summary
 Job Event Log.....
Attachments
 Verdad Homestead 19-Custom Results.png
Custom Graphs
 Custom Graph.....

1.0 Real-Time Job Summary

1.1 Job Event Log

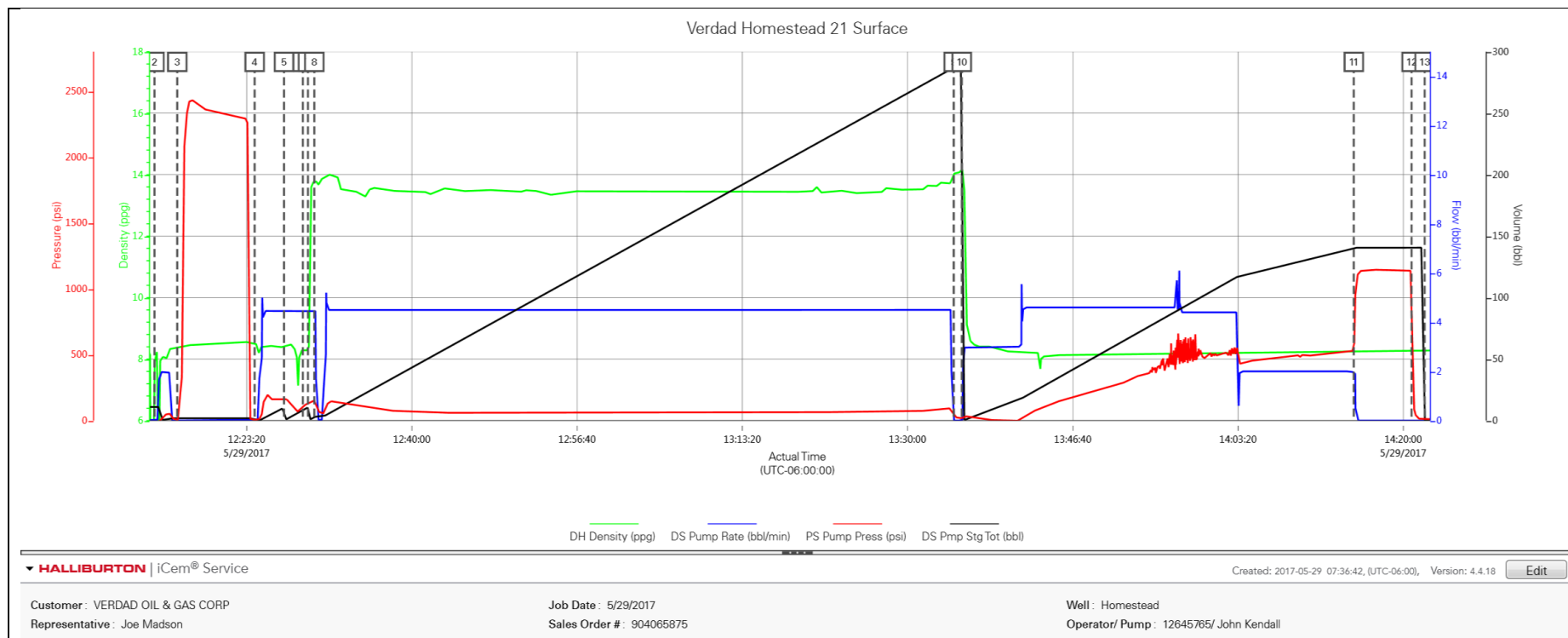
Type	Seq. No.	Activity	Graph Label	Date	Time	Source	DH Density (ppg)	DS Pump Rate (bbl/min)	DS Pmp Stg Tot (bbl)	PS Pump Press (psi)	Comments
Event	1	Call Out	Call Out	5/29/2017	05:00:00	USER					CREW CALLED OUT AT 05:00, REQUESTED ON LOCATION 10:00. CREW PICKED UP CEMENT, 100 LBS SUGAR, 100 LBS CALCIUM CHLORIDE, 2 LBS RED DYE, AND DOUBLE STACK PLUG COTAINER FROM FT. LUPTON, CO. BULK 660, E-17, E-15, AND BL-4, PUMP RT-1.
Event	2	Crew Leave Shop	Crew Leave Shop	5/29/2017	08:30:00	USER					STARTED JOURNEY MANAGEMENT.
Event	3	Arrive at Location from Service Center	Arrive at Location from Service Center	5/29/2017	09:00:00	USER					END JOURNEY MANAGEMENT. MEET WITH CO. MAN TO DISCUSS JOB; CASING- 9.625 36# @ 1,709.25', 13.5" HOLE 1,729' SHOE 46.84', FRESH WATER DISPLACEMENT.
Event	4	Safety Meeting - Assessment of Location	Safety Meeting - Assessment of Location	5/29/2017	09:15:00	USER					HAZARD HUNT. DISCUSSED POSSIBLE HAZARDS ASSOCIATED WITH LOCATION, RIG UP AND WEATHER.
Event	5	Rig-Up Equipment	Rig-Up Equipment	5/29/2017	09:30:00	USER					RIG UP BULK AND MIXING EQUIPMENT.

Event	6	Pre-Job Safety Meeting	Pre-Job Safety Meeting	5/29/2017	11:45:00	USER						MEETING WITH HALLIBURTON AND RIG PERSONNEL. COMMUNICATED POTENTIAL SAFETY HAZARDS AND JOB DETAILS.
Event	7	Start Job	Start Job	5/29/2017	12:14:02	COM5						BEGIN RECORDING JOB DATA.
Event	8	Test Lines	Test Lines	5/29/2017	12:16:20	COM5						PRESSURE TESTED IRON TO 3500 PSI. KICKOUTS SET @ 500 PSI, KICKED OUT @ 340 PSI, 5TH GEAR STALL OUT @ 2340 PSI.
Event	9	Pump Spacer 1	Pump Spacer 1	5/29/2017	12:24:08	COM5	8.33	4.50	10.0	180.0		PUMP 10 BBLS OF FRESH WATER.
Event	10	Pump Spacer 2	Pump Spacer 2	5/29/2017	12:27:06	COM5	8.33	4.50	10.0	169.00		PUMP 10 BBLS OF FRESH WATER WITH RED DYE.
Event	11	Drop Bottom Plug	Drop Bottom Plug	5/29/2017	12:29:00	USER	8.23	4.50	8.50	103.00		PLUG LEFT CONTAINER, VERIFIED BY CO. MAN.
Event	12	Pump Cement	Pump Cement	5/29/2017	12:29:31	COM5	13.50	4.40	245.0	133.00		PUMP 780 SKS OF SWIFTCEM @ 13.5 LB/GAL, 1.76 YIELD, 8.83 GAL/SK 245 BBLS. DENSITY VERIFIED BY PRESSURIZED MUD SCALES.
Event	13	Check Weight	Check Weight	5/29/2017	12:30:09	COM5	13.50	4.50	2.80	153.00		WEIGHT VERIFIED USING PRESSURIZED MUD SCALES.
Event	14	Drop Top Plug	Drop Top Plug	5/29/2017	13:34:39	COM5						PLUG LEFT CONTAINER, VERIFIED BY CO. MAN.

Event	15	Pump Displacement	Pump Displacement	5/29/2017	13:35:28	COM5	8.33	4.50	286.00	129.0	BEGIN CALCULATED DISPLACEMENT OF 129 BBLS WITH FRESH WATER. CEMENT TO SURFACE @ 93 BBLS INTO DISPLACEMENT, 36 BBLS OF CEMENT TO SURFACE. SLOW RATE TO 2 BPM @ 110 BBLS INTO DISPLACEMENT.
Event	16	Bump Plug	Bump Plug	5/29/2017	14:15:00	USER					PLUG BUMPED AT CALCULATED DISPLACEMENT. PRESSURED 500 PSI OVER BUMP.
Event	17	Other	Check Floats	5/29/2017	14:20:50	USER					RELEASED PRESSURE, FLOATS HELD, 1.5 BBLS BACK.
Event	18	End Job	End Job	5/29/2017	14:22:09	COM5					STOP RECORDING JOB DATA.
Event	19	Post-Job Safety Meeting (Pre Rig-Down)	Post-Job Safety Meeting (Pre Rig-Down)	5/29/2017	14:30:00	USER					DISCUSSED POSSIBLE HAZARDS ASSOCIATED WITH WEATHER, LOCATION AND RIGGING DOWN IRON AND HOSES.
Event	20	Rig-Down Equipment	Rig-Down Equipment	5/29/2017	14:35:00	USER					RIG DOWN BULK AND MIXING EQUIPMENT.
Event	21	Crew Leave Location	Crew Leave Location	5/29/2017	15:30:00	USER					THANK YOU FOR USING HALLIBURTON – NICK PETERSON AND CREW.
Event	22	Crew Return Yard	Crew Return Yard	5/29/2017	16:00:00	USER					

2.0 Attachments

2.1 Verdad Homestead 19-Custom Results.png



3.0