

HALLIBURTON

iCem[®] Service

VERDAD OIL & GAS

United States of America, COLORADO

For: Joe

Date: Thursday, May 25, 2017

Homestead 18

Verdad Surface Homestead 18

Job Date: Thursday, May 25, 2017

Sincerely,

Bryan Kraft

Legal Notice

Disclaimer:

All information in this report is provided subject to the terms and conditions which govern the services provided by Halliburton. Halliburton personnel use their best efforts in gathering information and their best judgment in interpreting it, but any interpretation, research, analysis or recommendation furnished by Halliburton are opinions based upon inferences from measurements and empirical relationships and assumptions, which inferences and empirical relationships and assumptions are not infallible, and with respect to which professionals in the industry may differ. Accordingly, HALLIBURTON IS UNABLE TO GUARANTEE THE ACCURACY OF ANY CHART INTERPRETATION, RESEARCH ANALYSIS, OR JOB RECOMMENDATION and any interpretation or recommendation is not for use of or reliance upon by any third party. The customer has full responsibility for any of its decisions which are based on the information provided in this report.

Table of Contents

Real-Time Job Summary
 Job Event Log.....
Attachments.....
 Verdad Surface Homestead 18 Graph.png
 Verdad Surface Homestead 18 Events.png.....

1.0 Real-Time Job Summary

1.1 Job Event Log

Type	Seq. No.	Activity	Graph Label	Date	Time	Source	DH Density (ppg)	Comb Pump Rate (bbl/min)	DS Pump Press (psi)	Pump Stg Tot (bbl)	Comments
Event	1	Call Out	Call Out	5/25/2017	05:00:00	USER					CREW CALLED OUT AT 5:00 5/25/2017, REQUESTED ON LOCATION 9:00 5/25/2017. CREW PICKED UP CEMENT, 100 LBS OF SUGAR, 2 BAGS OF CaCL, 2 LBS RED DYE, PLUG CONTAINER AND MANIFOLD FROM FORT LUPTON, CO. BULK 660: 12350112/11566182, BULK 660: 12114232/10679720, PUMP ELITE: 12663023/11618695.
Event	2	Pre-Convoy Safety Meeting	Pre-Convoy Safety Meeting	5/25/2017	07:25:00	USER					DISCUSSED ROUTES, HAZARDS, AND COMMUNICATION WITH CREW.
Event	3	Crew Leave Yard	Crew Leave Yard	5/25/2017	07:30:00	USER					STARTED JOURNEY MANAGEMENT.
Event	4	Arrive at Location from Service Center	Arrive at Location	5/25/2017	08:00:00	USER					END JOURNEY MANAGEMENT. MEET WITH CO. MAN TO DISCUSS JOB; SURFACE CASING: 36# 9.625" J-55 LTC @ 1714.73', FLOAT COLLAR @ 1669.88', 13.5" OPEN HOLE, 8.7 PPG WELL FLUID, FRESH WATER DISPLACEMENT. CASING LANDED @ 10:50 5/25/2017.

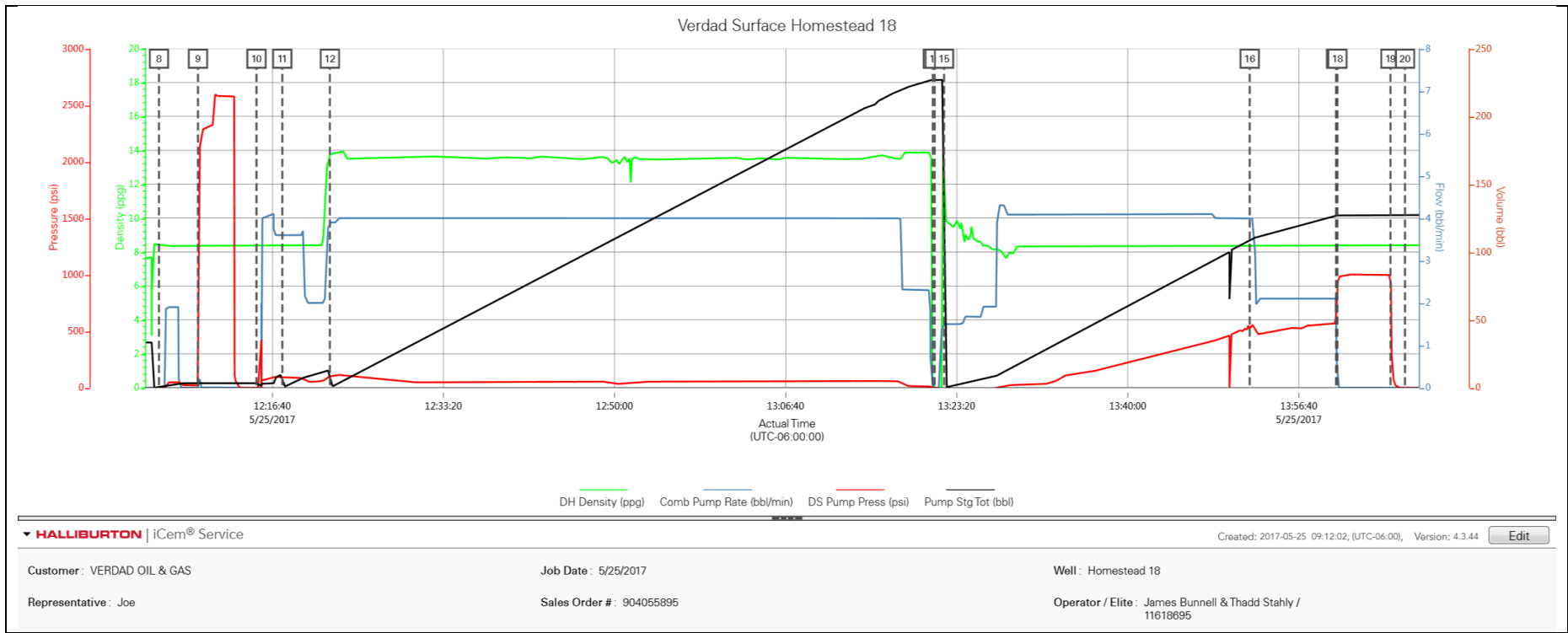
Event	5	Pre-Rig Up Safety Meeting	Pre-Rig Up Safety Meeting	5/25/2017	08:45:00	USER						HAZARD HUNT. DISCUSSED POSSIBLE HAZARDS ASSOCIATED WITH LOCATION, RIG UP AND WEATHER.
Event	6	Rig-Up Equipment	Rig-Up Equipment	5/25/2017	08:50:00	USER						CREW STAGED EQUIPMENT AND RIGGED UP BULK, IRON, AND WATER HOSES TO PERFORM JOB.
Event	7	Safety Meeting - Pre Job	Safety Meeting - Pre Job	5/25/2017	10:30:00	USER						MEETING WITH HALLIBURTON AND RIG PERSONNEL. COMMUNICATED POTENTIAL SAFETY HAZARDS AND JOB DETAILS.
Event	8	Start Job	Start Job	5/25/2017	12:05:37	USER						BEGIN RECORDING JOB DATA. JAMES BUNNELL AND THADD STAHLY OPERATING ELITE.
Event	9	Test Lines	Test Lines	5/25/2017	12:09:25	USER	8.38	0.00	855.00	3.30		PRESSURE TESTED IRON TO 2500 PSI. KICKOUTS SET @ 500 PSI, KICKED OUT @ 1240 PSI, 5TH GEAR STALL OUT @ 2170 PSI.
Event	10	Pump Spacer 1	Pump Fresh Water Spacer	5/25/2017	12:15:07	COM5						PUMP 10 BBLS OF FRESH WATER.
Event	11	Pump Spacer 2	Pump Red Dyed Fresh Water Spacer	5/25/2017	12:17:38	COM5	8.36	3.60	97.00	10.00		PUMP 10 BBLS OF RED DYED FRESH WATER.
Event	12	Pump Cement	Pump Cement @ 13.5 ppg	5/25/2017	12:22:16	COM5	13.79	3.90	104.00	13.30		PUMP 740 SKS OF SWIFTCHEM @ 13.5 LB/GAL, 1.76 YIELD, 8.83 GAL/SK, 232 BBLS, CALCULATED TOL @ SURFACE, DENSITY VERIFIED BY PRESSURIZED MUD SCALES.

Event	13	Shutdown	Shutdown	5/25/2017	13:21:00	COM5					SHUTDOWN TO DROP TOP PLUG.
Event	14	Drop Top Plug	Drop Top Plug	5/25/2017	13:21:11	COM5	0.05	0.00	-4.00	1.00	PLUG LEFT CONTAINER, VERIFIED BY CO. MAN.
Event	15	Pump Displacement	Pump Fresh Water Displacement	5/25/2017	13:22:06	COM5					BEGIN CALCULATED DISPLACEMENT OF 129 BBLS WITH FRESH WATER.
Event	16	Spacer Returns to Surface	Spacer Returns to Surface	5/25/2017	13:51:52	USER	8.34	4.00	517.00	108.70	RETURNS STARTED TURNING TO DYED SPACER @ 105 BBLS INTO DISPLACEMENT, GOOD RED DYED SPACER TO SURFACE @ 113 BBLS INTO DISPLACEMENT.
Event	17	Bump Plug	Bump Plug	5/25/2017	14:00:17	COM5	8.36	2.10	608.00	127.00	PLUG BUMPED AT CALCULATED DISPLACEMENT. PRESSURED 500 PSI OVER FINAL CIRCULATING PRESSURE. NO CEMENT RETURNS TO SURFACE. RETURNS WERE PRESENT THROUGHOUT THE CEMENT JOB HOWEVER WERE FLUCTUATING UP AND DOWN CONSISTANTLY. ESTIMATED ANOTHER 5 MORE BBLS OF SPACER LEFT TO RETURN TO SURFACE BEFORE SEEING CEMENT, PLACING THE ESTIMATED TOP OF CEMENT @ 57.5FT, BOTH ARE JUST ESTIMATES. WILL NEED TO TAG CEMENT ONCE IT IS SET UP FOR ACCURATE DEPTH.
Event	18	Shutdown	Shutdown	5/25/2017	14:00:25	USER	8.36	0.00	918.00	127.20	SHUTDOWN FOR 5 MINUTES.

Event	19	Check Floats	Check Floats	5/25/2017	14:05:35	USER	8.36	0.00	997.00	127.20	RELEASED PRESSURE, FLOATS HELD, 1 BBL BACK.
Event	20	End Job	End Job	5/25/2017	14:07:00	COM5	8.37	0.00	-3.00	127.20	STOP RECORDING JOB DATA.
Event	21	Pre-Rig Down Safety Meeting	Pre-Rig Down Safety Meeting	5/25/2017	14:15:00	USER					DISCUSSED POSSIBLE HAZARDS ASSOCIATED WITH WEATHER, LOCATION AND RIGGING DOWN IRON AND HOSES.
Event	22	Rig-Down Completed	Rig-Down Completed	5/25/2017	15:15:00	USER					ALL HALLIBURTON ITEMS WERE STOWED FOR TRAVEL, AND LOCATION WAS CLEAN.
Event	23	Pre-Convoy Safety Meeting	Pre-Convoy Safety Meeting	5/25/2017	15:25:00	USER					DISCUSSED ROUTES HAZARDS AND COMMUNICATION WITH CREW.
Event	24	Depart Location	Depart Location	5/25/2017	15:30:00	USER					THANK YOU FOR USING HALLIBURTON - BRYAN KRAFT AND CREW.

2.0 Attachments

2.1 Verdad Surface Homestead 18 Graph.png



2.2 Verdad Surface Homestead 18 Events.png

Description	Actual Time (UTC-06:00:00)	DH Density (ppg)	Comb Pump Rate (bbl/min)	DS Pump Press (psi)	Pump Stg Tot (bbl)	
8 Start Job	12:05:37	8.47	0.00	-9.00	0.00	
9 Test Lines	12:09:25	8.38	0.00	855.00	3.30	
10 Pump Fresh Water Spacer	12:15:07	8.41	0.00	-2.00	3.30	
11 Pump Red Dyed Fresh Water :	12:17:38	8.36	3.60	97.00	10.00	
12 Pump Cement @ 13.5 ppg	12:22:16	13.79	3.90	104.00	13.30	
13 Shutdown	13:21:00	0.21	0.00	-4.00	226.80	
14 Drop Top Plug	13:21:11	0.05	0.00	-4.00	226.80	
15 Pump Fresh Water Displacem	13:22:06	12.47	1.50	-1.00	139.19	
16 Spacer Returns to Surface	13:51:52	8.34	4.00	517.00	108.70	
17 Bump Plug	14:00:17	8.36	2.10	608.00	127.00	
18 Shutdown	14:00:25	8.36	0.00	918.00	127.20	
19 Check Floats	14:05:35	8.36	0.00	997.00	127.20	
20 End Job	14:07:00	8.37	0.00	-3.00	127.20	

HALLIBURTON

iCem® Service

Customer: VERDAD OIL & GAS

Representative: Joe

Job Date: 5/25/2017

Sales Order #: 904055895

Well: Homestead 18

Operator / Elite: James Bunnell & Thadd Stahly / 11618695

Created: 2017-05-25 09:12:02, (UTC-06:00), Version: 4.3.44

Edit